

- LEGEND:**
- FINE HYDRANT
  - VALVE
  - CONCRETE THRUST BLOCK
  - W6 — WATER LINE W/RE, 16" 6" DIA.

**NOTE:** WATER LINE MATERIALS AND INSTALLATION SHALL CONFORM TO "UTE WATER CONSERVANCY DISTRICT MATERIAL AND INSTALLATION SPECIFICATIONS FOR SUB-DIVISION WATER SERVICE".

**'As-Built Drawing'**

FUTURE Filing ——— 1<sup>st</sup> Filing

**CERTIFICATION**  
 I CERTIFY THAT INFILTRATION/EXFILTRATION DOES NOT EXCEED 200 GPM/D  
 R.P.P.

COLORADO DEPARTMENT OF HEALTH  
 Water Quality Control Division  
 In accordance with the Water Quality Control Act, this design for Crown Heights Filtration #1 has been reviewed.  
 Date 8-17-80 Reviewer Rachel W. ...  
 License No. ...

*Richard P. ...*  
 CROWN HEIGHTS DEVELOPMENT  
 DATE 7/21/80

*Ronald P. ...*  
 CITY OF GRAND JUNCTION - APPROVED  
 DATE 1-12-81

REVISION 1-27-81	ADD 2" WATER VALVES & REV. TO UNIFORM SPEC. (BALANCED FIRE ...)
REVISION 2-4-81	STRIPPED THE LINES OF ...
REVISION 3-4-81	REVISED SEWER CONTROL LINE & ...
<b>SANITARY SEWER SYSTEM &amp; WATER SYSTEM</b>	
<b>CROWN HEIGHTS - 1<sup>st</sup> FILING</b>	
CROWN HEIGHTS DEVELOPMENT CO.	COBURN ENGINEERS
DESIGNED BY	PREPARED BY
APPROVED BY	DATE
PROJECT NO.	FILE NO.
6-25-79	76-18-06

CROWN HEIGHTS SUBDIVISION - FILING ONE

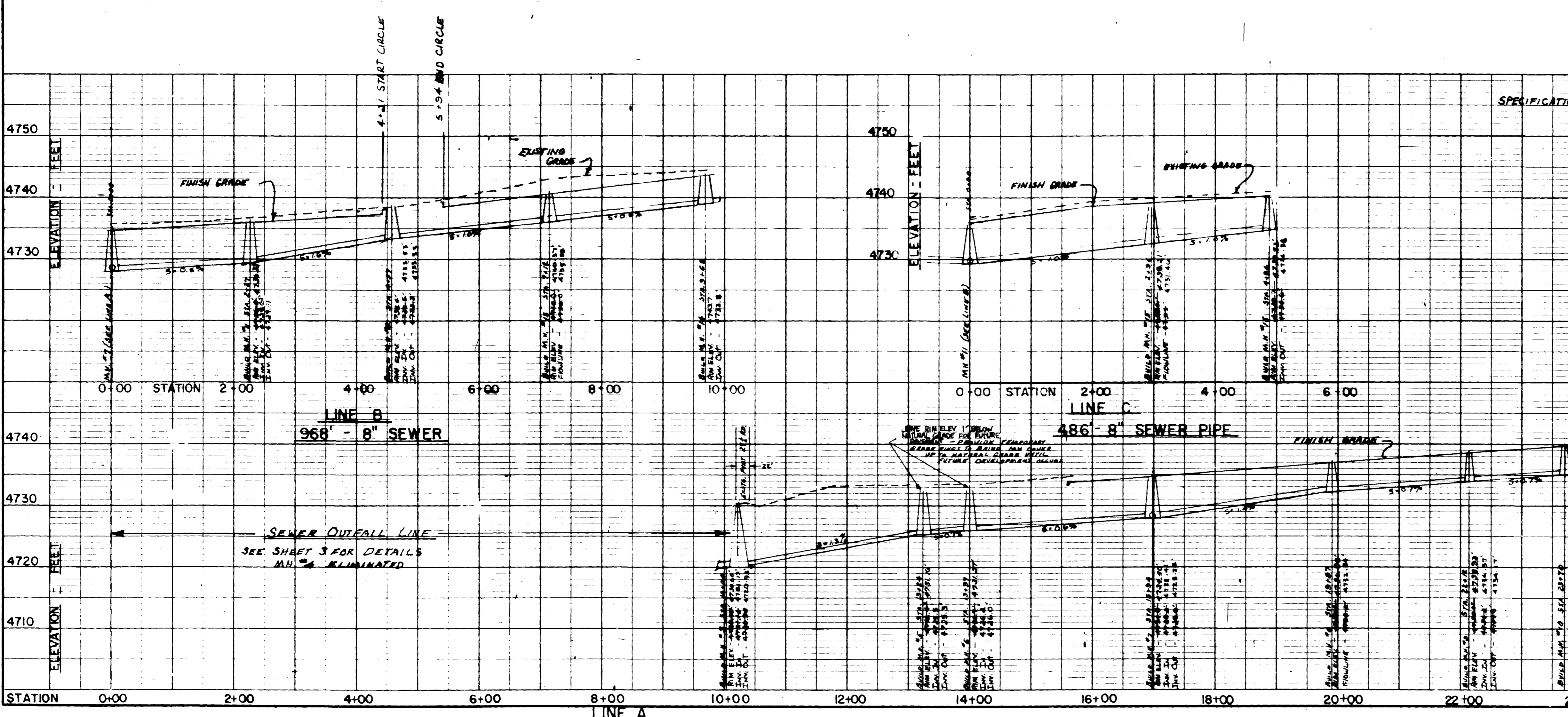
5-20-81 Revised rim elevations - See At-At-11, Sheet

**SANITARY SEWER SYSTEM**  
**CROWN HEIGHTS - 1st FILING**

FOR CROWN HEIGHTS DEVELOPMENT CO.  
 SURVEYED BY: [Signature]  
 DRAWN BY: RSC  
 APPROVED BY: [Signature]  
 SHEET NO. 2 of 3  
 FILE NO. 79-15-05

DATE 7-8-80

*R. S. Cohen*



**SPECIFICATIONS:**

**I. PIPE SPECIFICATIONS**

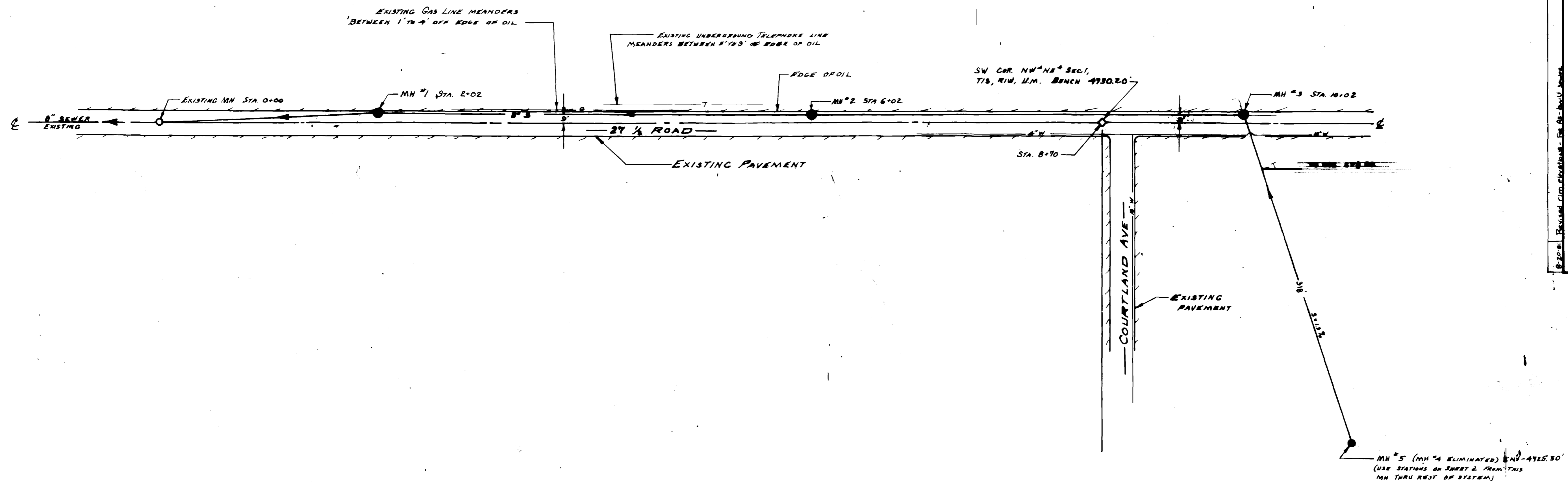
MANHOLE	PVC	ASTM D 2009	SDR 35
TRUNK	ASTM D 2009		
LATERALS	PVC	ASTM D 2009	SDR 35
ABS	ASTM D 2751		SDR 35

**II. CARRY LATERALS TO INSIDE LOT BOUNDARY**

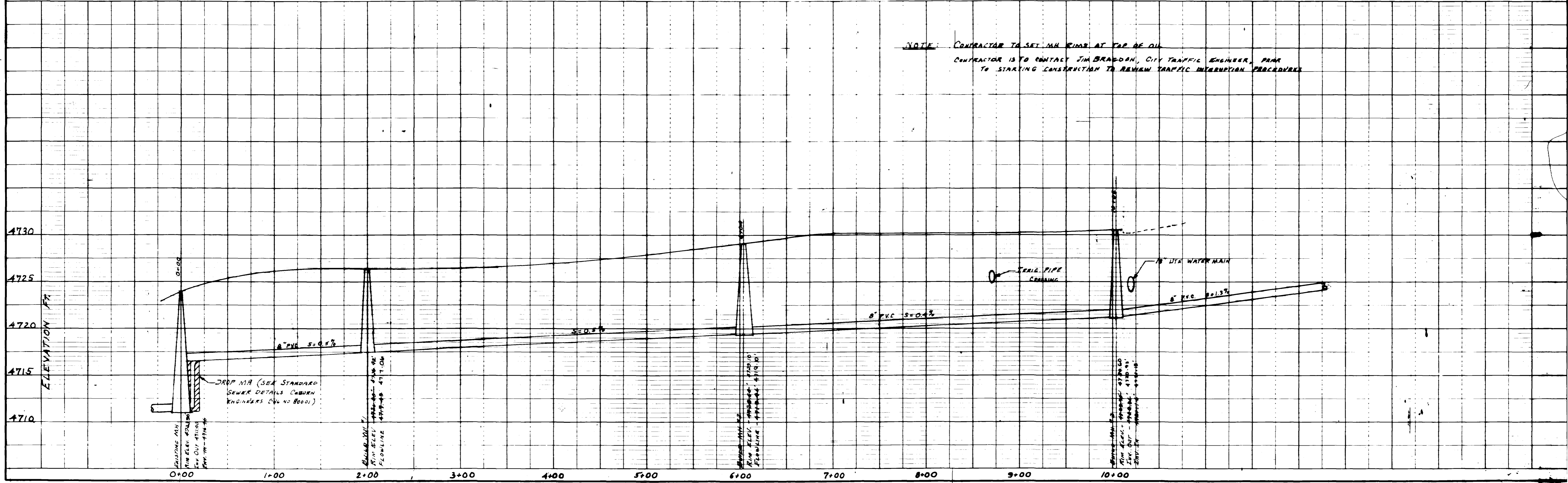
**III. MANHOLES IN AREAS SHALL BE FORMED AS SHOWN ON 'CITY STANDARD SANITARY SEWER DETAILS' DRAWING.**

**IV. CITY OF GRAND JUNCTION CONSULTATION ENGINEERS AND DETAILS FOR INSTALLATION OF SEWER LINES AND APPURTENANCES AND 'STANDARD SANITARY SEWER DETAILS' DRAWING SHALL GOVERN THE WORK.**

**V. SEWER LINES SHALL BE LOCATED A MINIMUM OF 10' HORIZONTALLY & 18" VERTICALLY FROM ALL UTILITIES. AT CROSSINGS WITH DEPTH LESS THAN 18" VERTICAL SPACING A SINGLE LENGTH OF PIPE (10' MIN) SHALL BE CONCURRED AT THE CROSSING. THE CROSSING SHALL BE RINGED IN A CONCRETE COLLAR 6" THICK AND EXTENDING AT LEAST 6' EITHER SIDE OF THE JOINT.**



NOTE: CONTRACTOR TO SET MH RIMS AT TOP OF OIL  
 CONTRACTOR IS TO CONTACT JIM BRADDOCK, CITY TRAFFIC ENGINEER, PRIOR TO STARTING CONSTRUCTION TO REVIEW TRAFFIC INTERRUPTION PROCEDURES



RSC

CROWN HEIGHTS FILING ONE

27 1/2 ROAD SEWER OUTFALL LINE

FOR CROWN HEIGHTS DEVELOPMENT CO.

SURVEYED BY LTM

DRAWN BY RSC

APPROVED BY RSC

SHEET NO. 3 OF 3

DATE 70-12-08

COBURN ENGINEERS

SCALE: HORIZONTAL 1" = 50' VERTICAL 1" = 10'

DATE 6-1-8