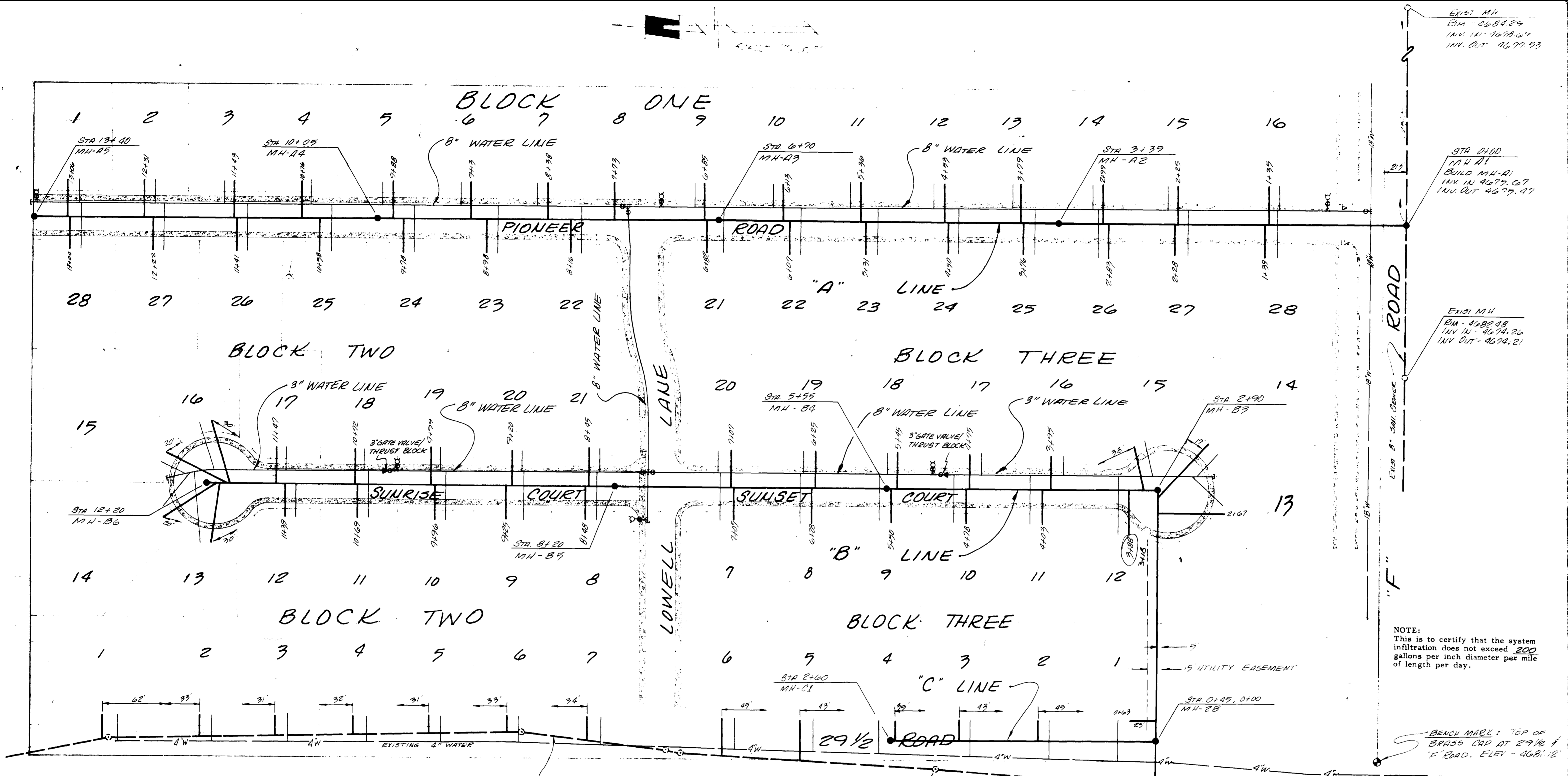


[Handwritten signature]

OK-BOW WEST SUBDIVISION
 MESA COUNTY, COLORADO
 SANITARY SEWER & DOMESTIC WATER
 DETAILS

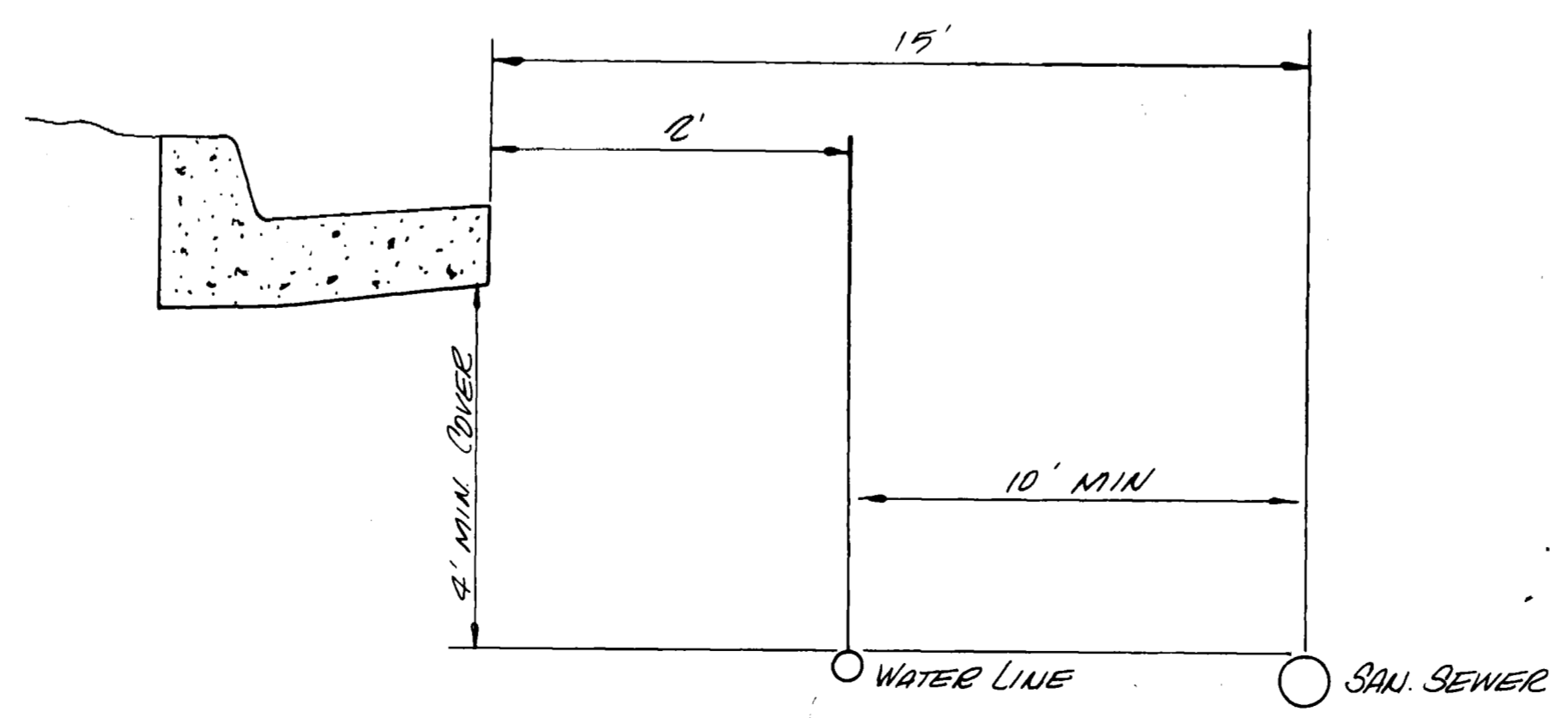


NOTE:
This is to certify that the system infiltration does not exceed 200 gallons per inch diameter per mile of length per day.

BENCH MARK: TOP OF BRASS CAP AT 29 1/2 ' F' ROAD. ELEV - 4681.12

- WATER LINE QUANTITIES**
- 2140 LF 8" CI 150 AC WATER PIPE
 - 510 LF 3" CI 200 PVC WATER PIPE
 - 6 EA FIRE HYDRANTS WITH 6" GATE VALVE & BOXES
 - 2 EA 8" x 3" REDUCERS
 - 1 EA 18" x 8" TAPPING SADDLE
 - 5 EA 8" x 8" GATE VALVES & BOXES
 - 72 EA 3/4" TYPE "K" COPPER SERVICES
 - 2 EA 3" GATE VALVES

- SEWER LINE QUANTITIES**
- 12 EA MANHOLES
 - 2880 LF 8" SANITARY SEWER PIPE
 - 72 EA SERVICE CONNECTIONS
 - 20 LF CONCRETE ENCASUREMENT
 - 2630 LF 4" SANITARY SEWER PIPE
 - 9490 LF TRENCH COMPACTION



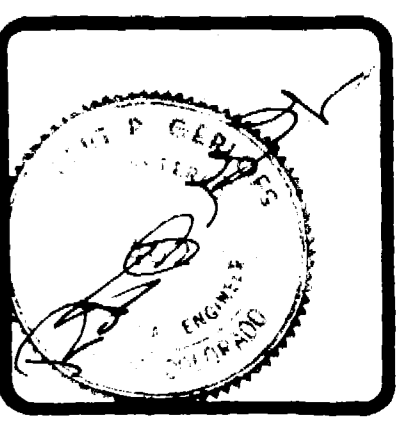
- NOTES:
1. Top of eccentric cone to be set at top of subgrade. Street contractor to set rim to finished grade of street.
 2. All sewer construction to be done in accordance with the Central Grand Valley Sanitation District Specifications.
 3. All construction to be done in accordance with the Colorado Department of Health Specifications.
 4. Contractor is responsible for locating all buried utilities and protecting the same.
 5. If vertical and horizontal clearances are less than state minimums, then concrete encasement may be required on sewer lines where water mains are less than proximity requirements.
 6. Manholes, unless otherwise noted, are to be located 5 ft. west or 5 ft. South of street intersections.
 7. All sewer services to extend 10' beyond property line.
 8. All water services to be located on property line.
 9. All water line construction to be done according to Ute Water Conservancy District Specifications.

ACCEPTED: _____ DATE: _____
 CENTRAL GRAND VALLEY SAN. DIST.

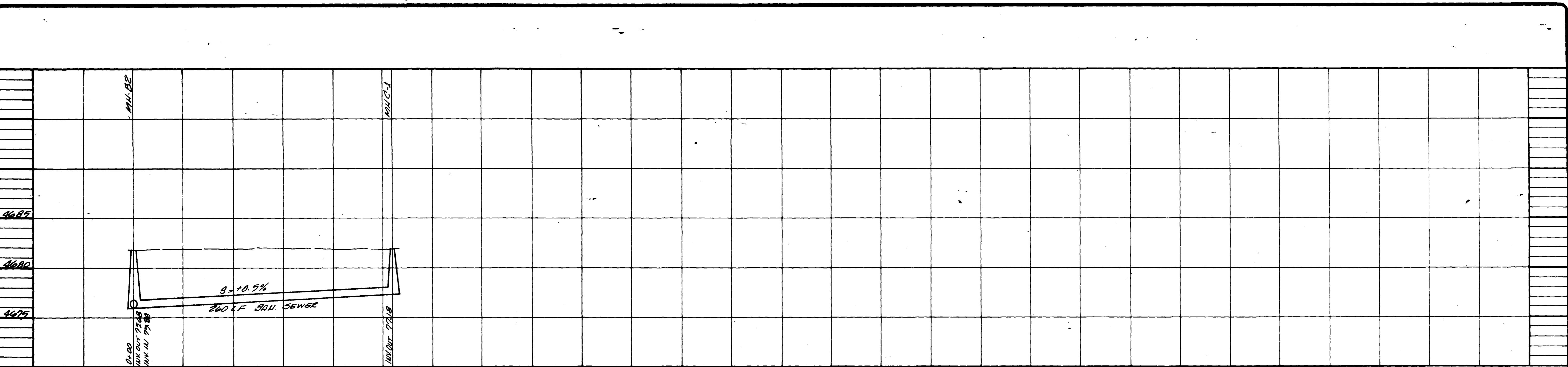
ACCEPTED: _____ DATE: _____
 UTE WATER CONSERVANCY DIST.

REVISIONS	BY

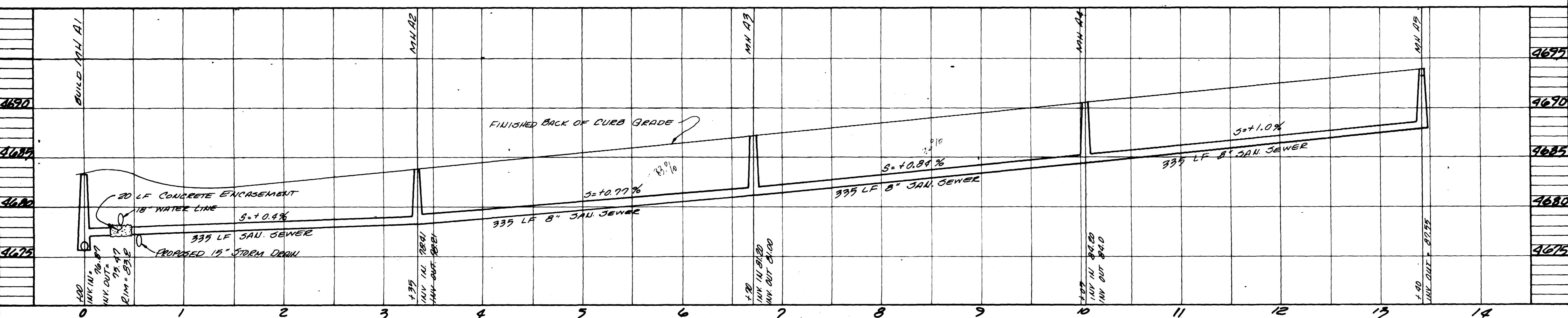
PARAGON ENGINEERING, INC.
P.O. Box 297
Grand Junction, Colorado 81501



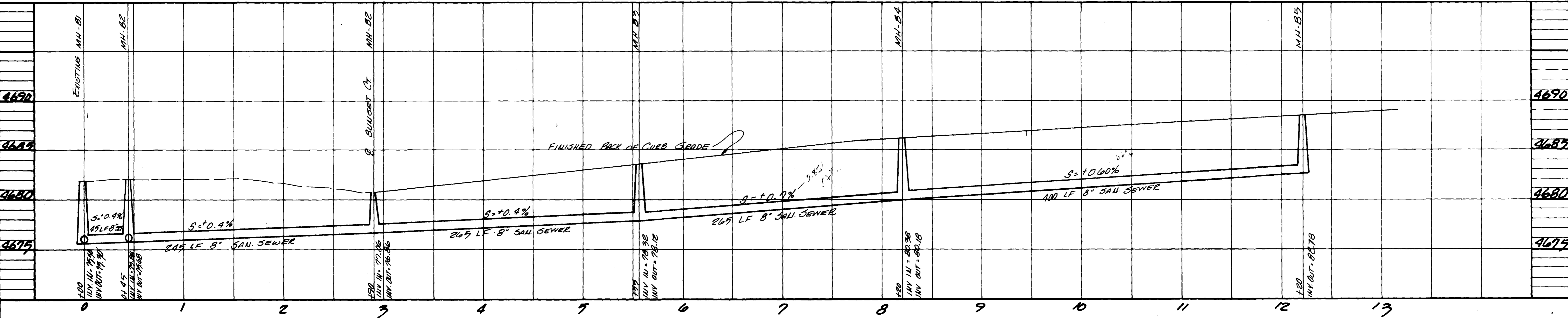
Ox-Bow West Subdivision
Mesa County, Colorado
SANITARY SEWER PROFILES



LINE "C"



LINE "A"

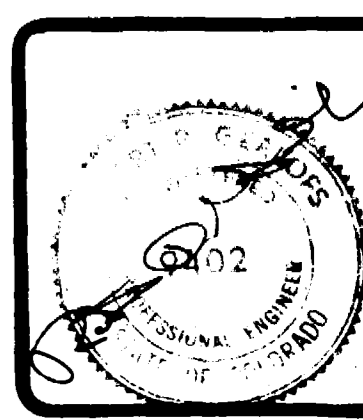


LINE "B"

AS BUILT DRAWINGS

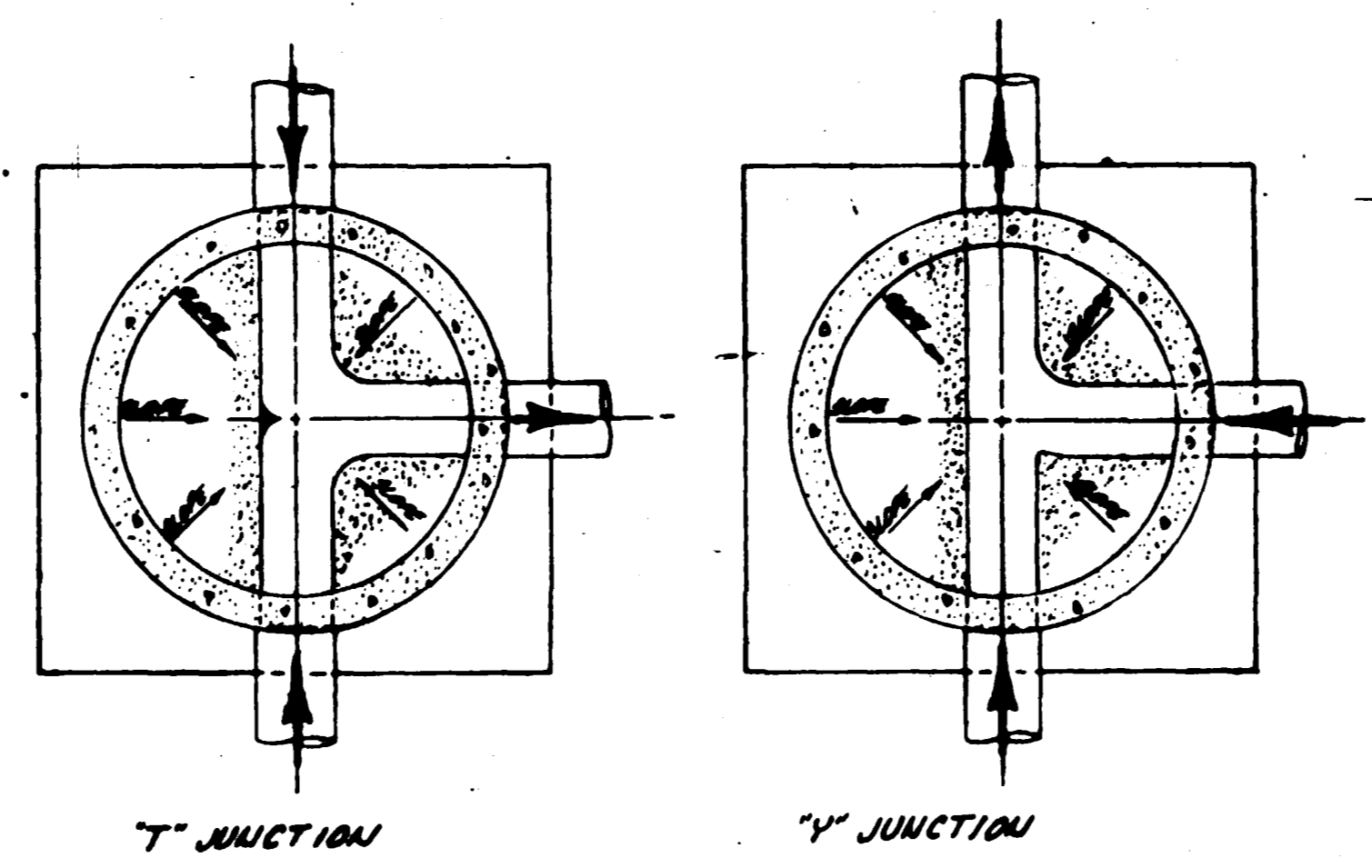
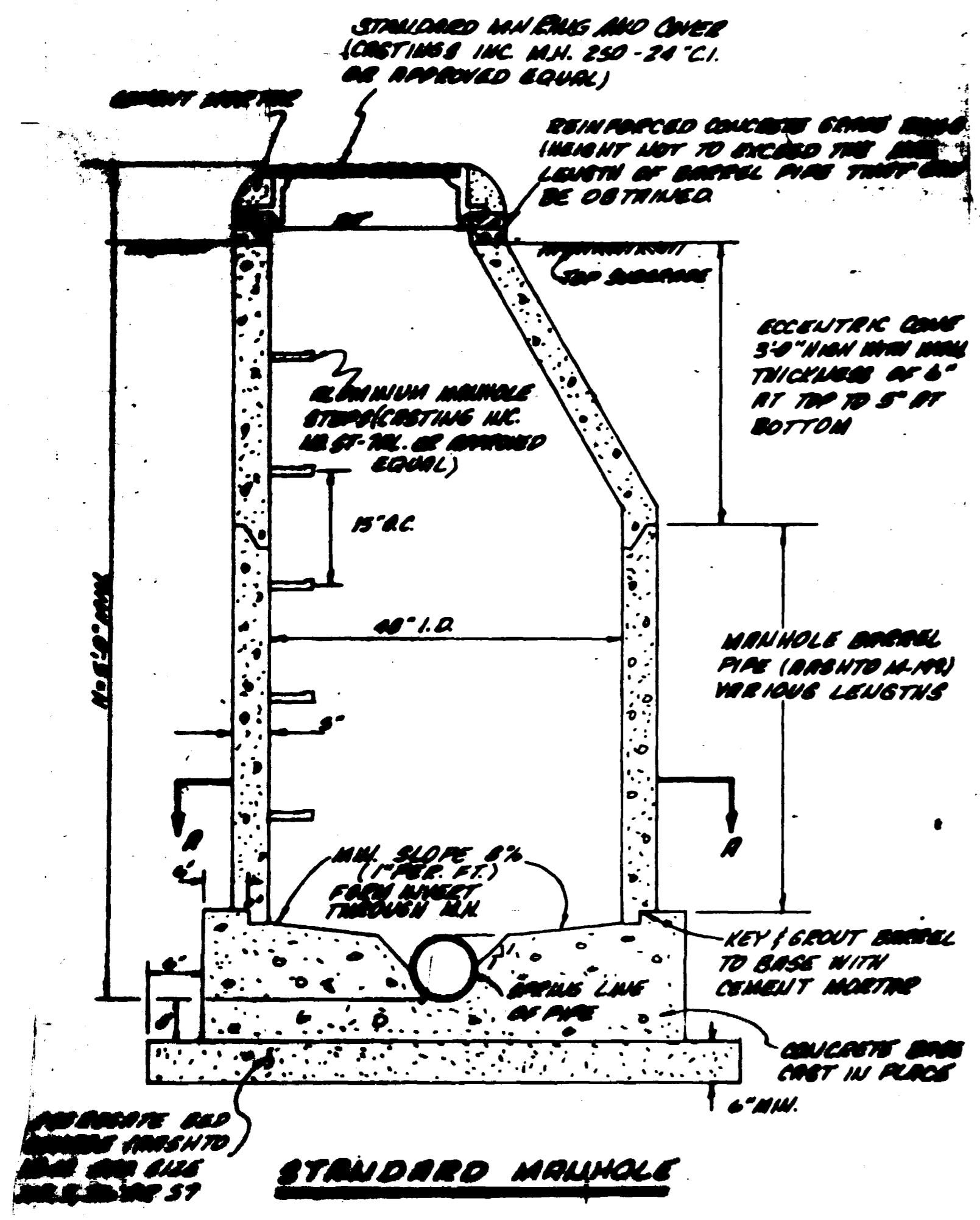
CHECKED	
DATE	JAN. 1979
SCALE	NONE
REVISIONS	BY

PARAGON ENGINEERING, INC.
 1000 N. GARDEN AVENUE
 SUITE 100
 DENVER, COLORADO 80202

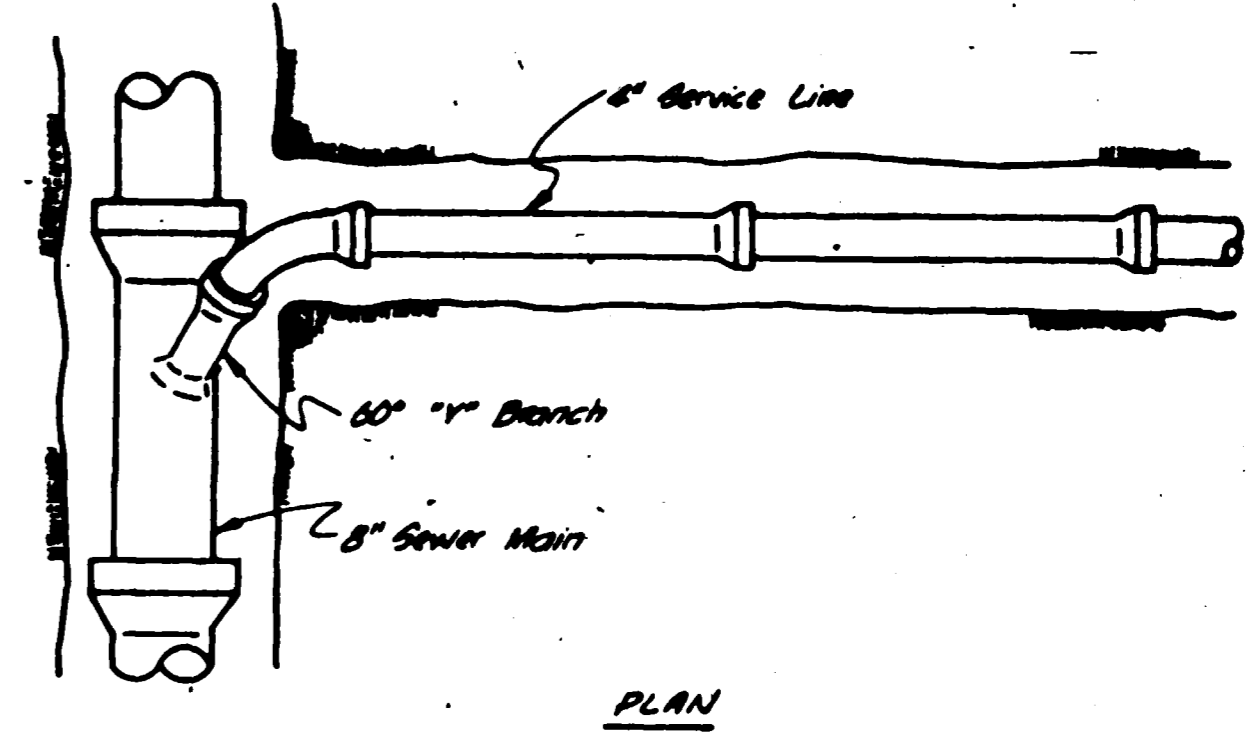


OX-BOW WEST SUBDIVISION
 MESA COUNTY, COLORADO
 SANITARY SEWER DETAILS

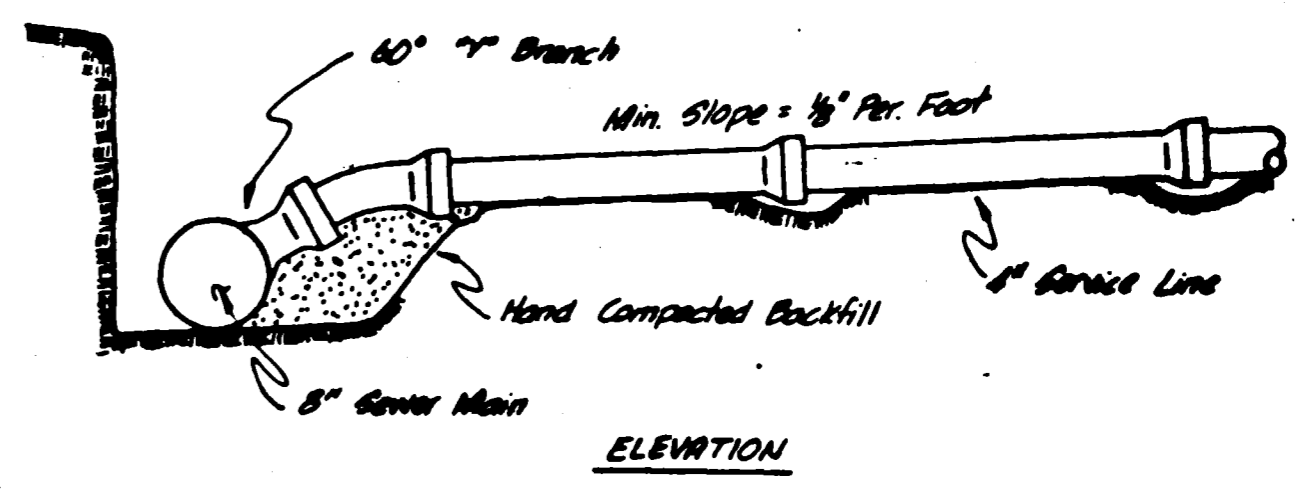
SHEET	4
OF	4 SHEETS



SECTION "A"-A

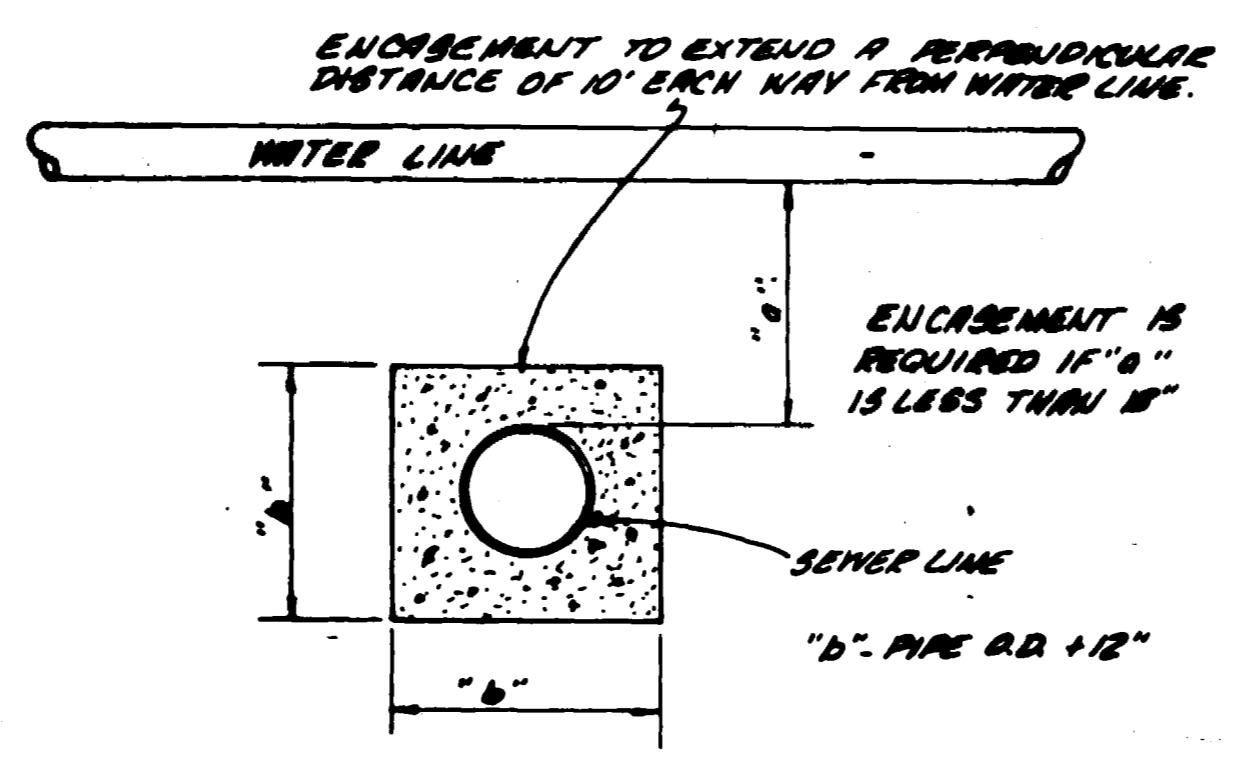


PLAN

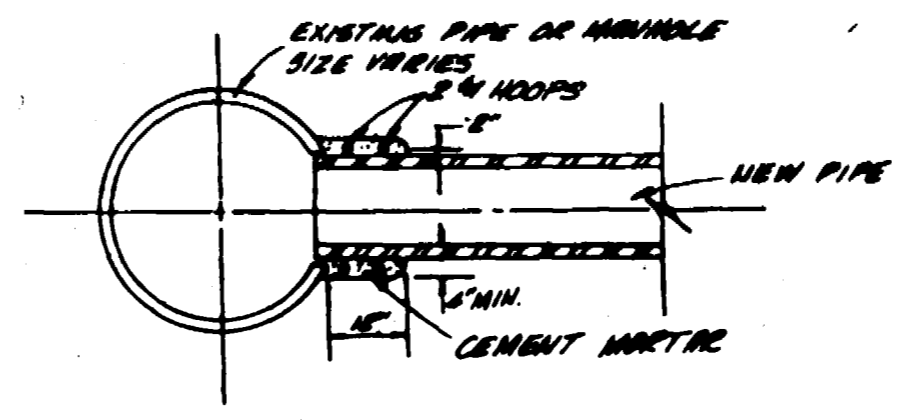


ELEVATION

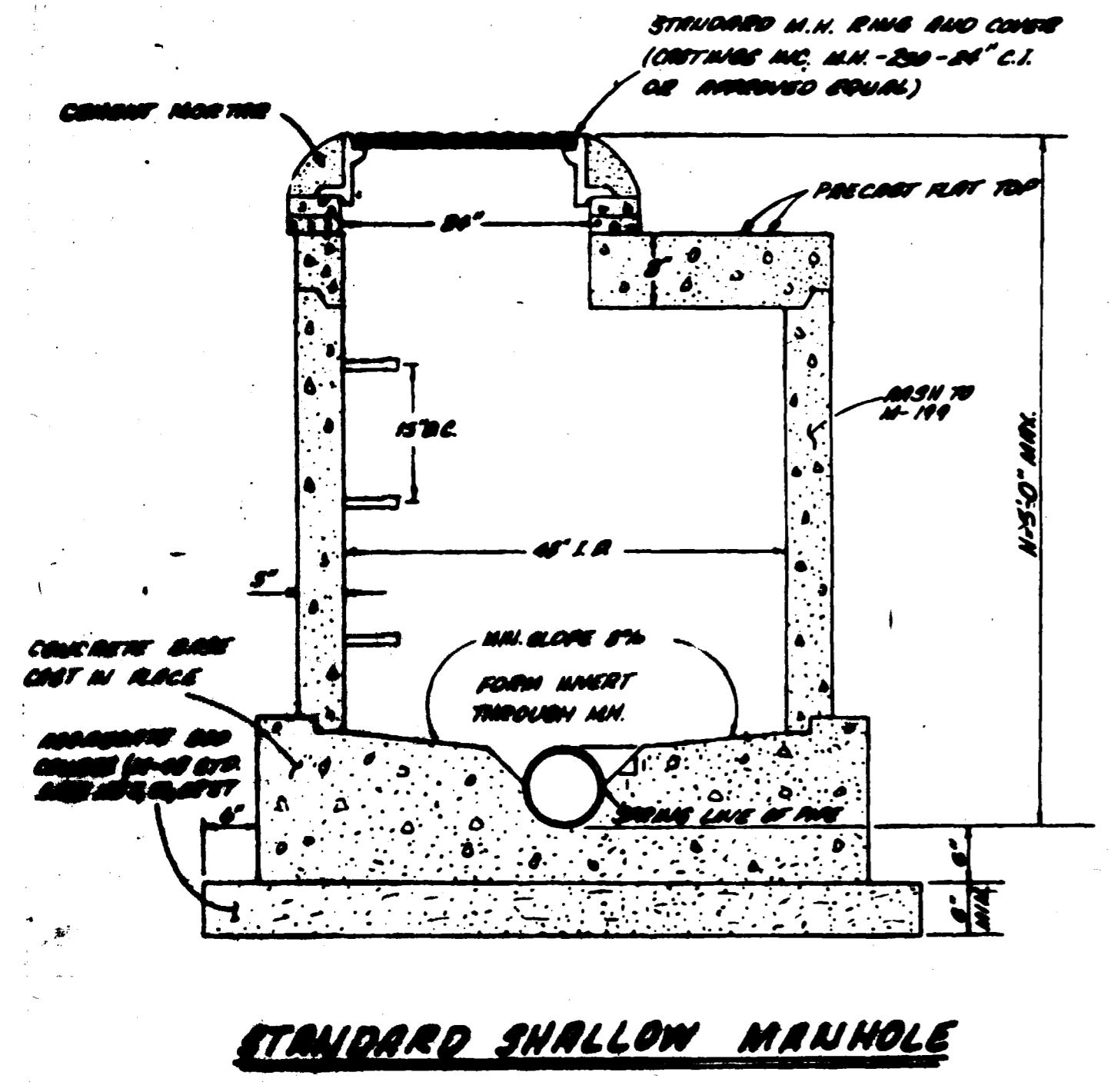
STANDARD SERVICE CONNECTION
1/8" SLOPE



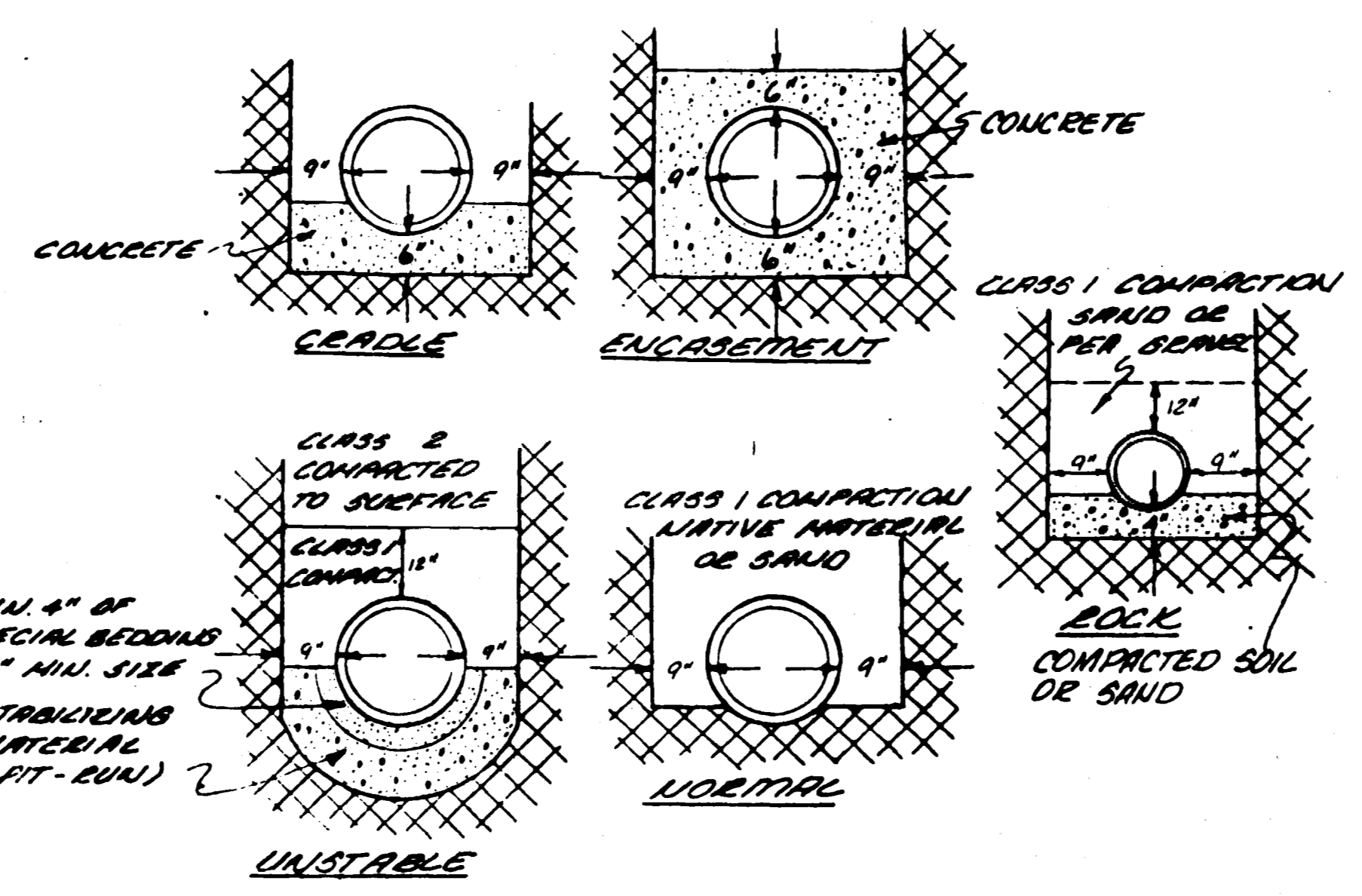
SEWER LINE ENCASEMENT
DETAIL



CONNECTION TO EXISTING
MANHOLE OR PIPE



STANDARD SHALLOW MANHOLE



TYPICAL BEDDING DETAIL

N.T.S.
HAND DIG FOR BELL OR COUPLING

AS BUILT DRAWINGS