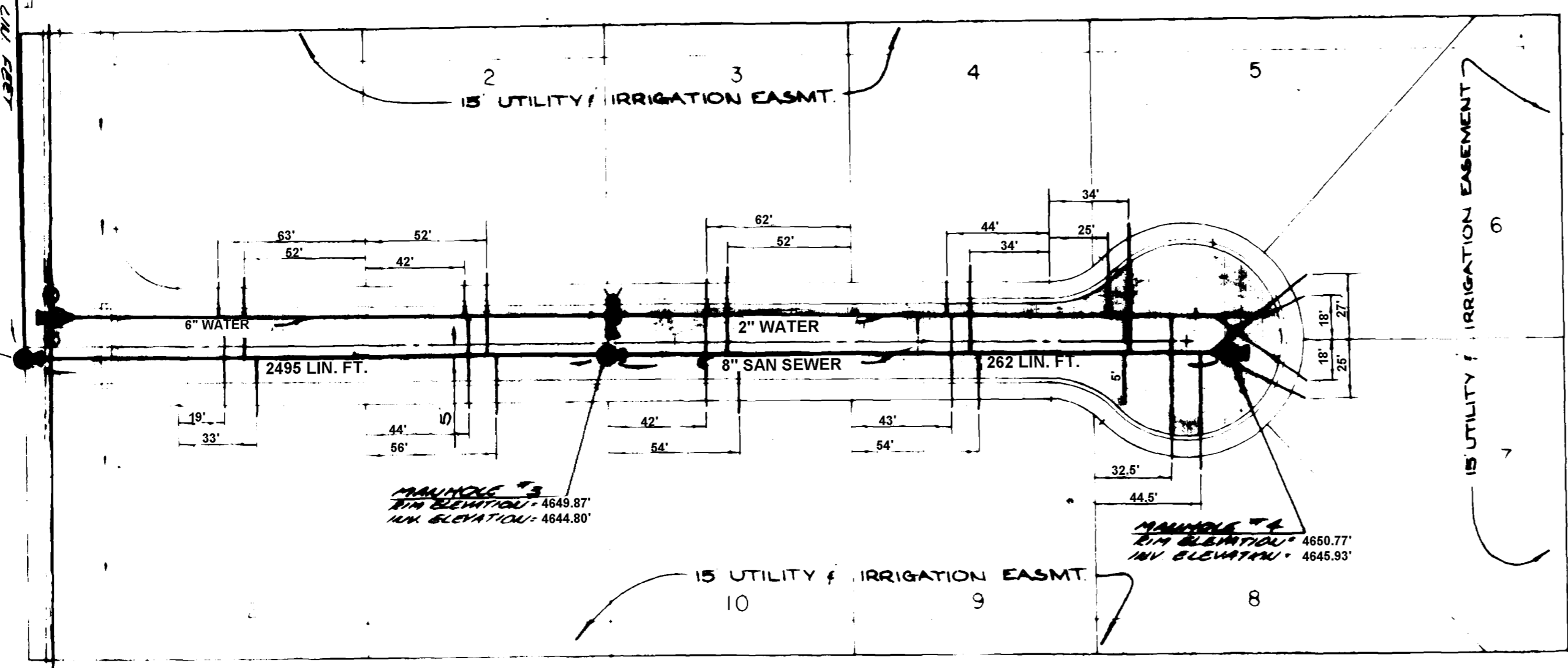


MANHOLE #1  
 RIM ELEVATION: 4649.03  
 INV ELEVATION: 4646.55

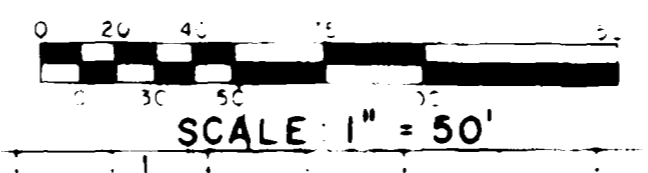
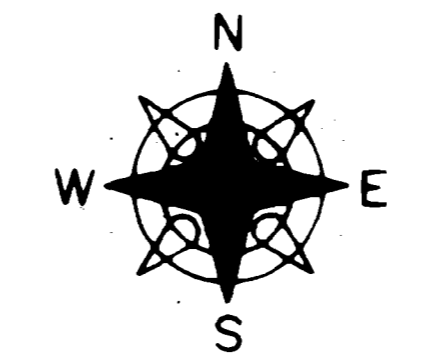
MANHOLE #2  
 RIM ELEVATION: 4648.06  
 INV ELEVATION: 4643.70

MANHOLE #3  
 RIM ELEVATION: 4648.87  
 INV ELEVATION: 4644.80

MANHOLE #4  
 RIM ELEVATION: 4650.77  
 INV ELEVATION: 4645.93



MONROE COURT



NOTES:

TIES TO ALL UTILITIES (WATER, SEWER, GAS, ELECTRIC, TELEPHONE, OR IRRIGATION) SHOWN ON THIS PLAT ARE APPROXIMATE AND INDICATE PROPOSED LOCATIONS. ONLY AFTER ACTUAL PLACEMENT EACH UTILITY WILL HAVE TO BE CONTACTED FOR LOCATION OF FACILITIES.

LOT AND EASEMENT GEOMETRICS ARE AS SHOWN ON FINAL PLAT OF MONROEVILLE.

ACCEPTED: \_\_\_\_\_ PUBLIC SERVICE COMPANY \_\_\_\_\_ DATE \_\_\_\_\_ ACCEPTED: \_\_\_\_\_ UTE WATER CONSERVANCY DISTRICT \_\_\_\_\_ DATE \_\_\_\_\_

ACCEPTED: \_\_\_\_\_ MOUNTAIN BELL TELEPHONE \_\_\_\_\_ DATE \_\_\_\_\_

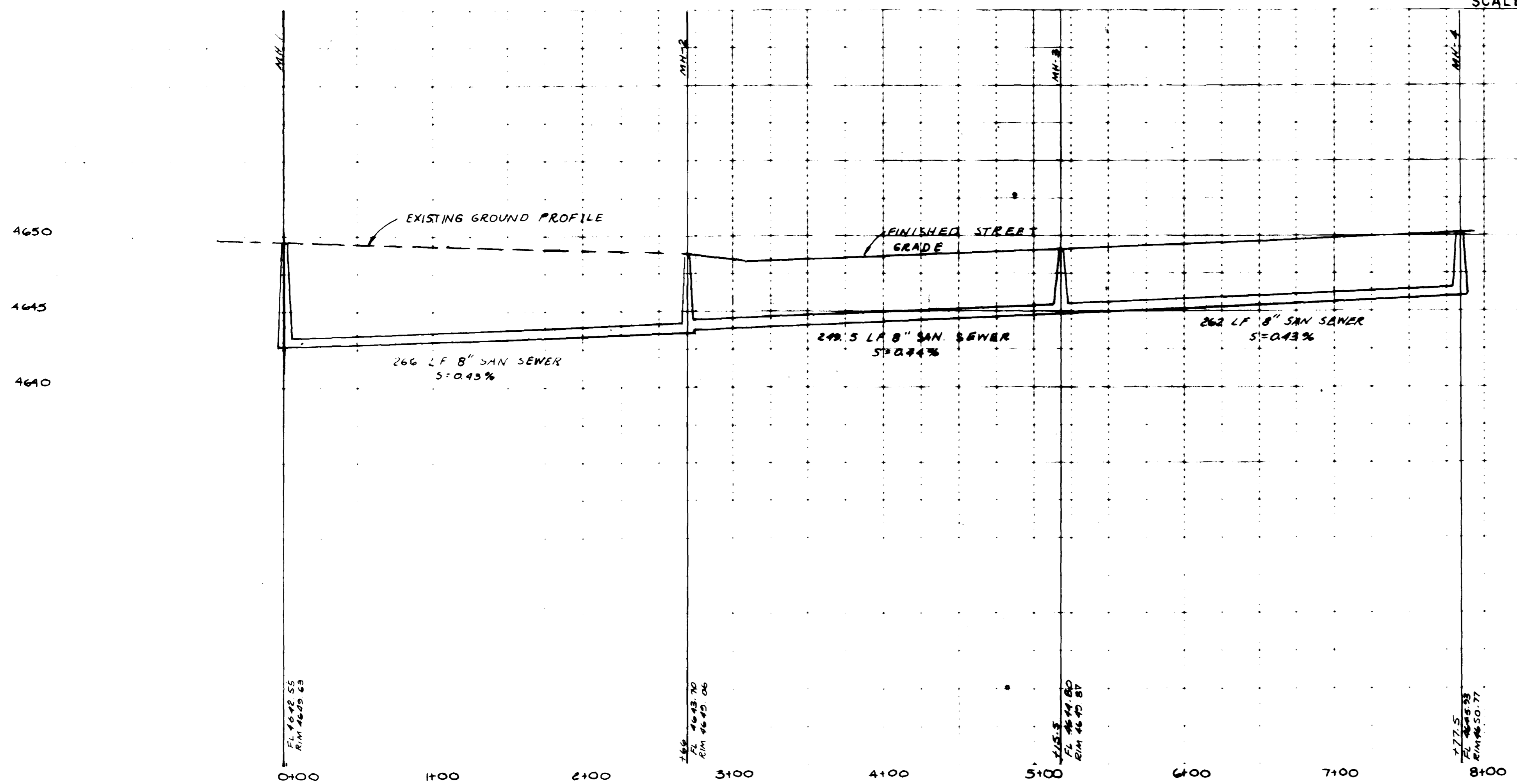
LEGEND

- SANITARY SEWERLINE
- WATER LINE
- GATE VALVE
- FIRE HYDRANT
- SANITARY SEWER MANHOLE w/ DIRECTION OF FLOW
- ⊕ THRUST BLOCK

NOTE: SEE TYPICAL STREET SECTION SHEET 7 OF 8

Note: The infiltration for this sanitary sewer system does not exceed 200 gpd/inch/dia.mile

*M. Richard J. Johnson*



ATKINS & ASSOCIATES

MONROEVILLE SUBDIVISION  
 SANITARY SEWER AND WATER AS BUILTS