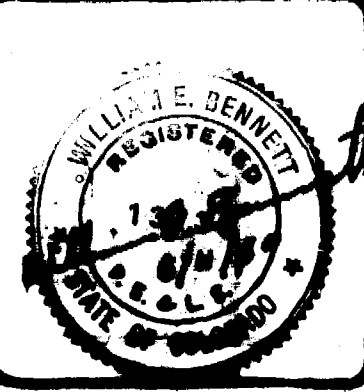
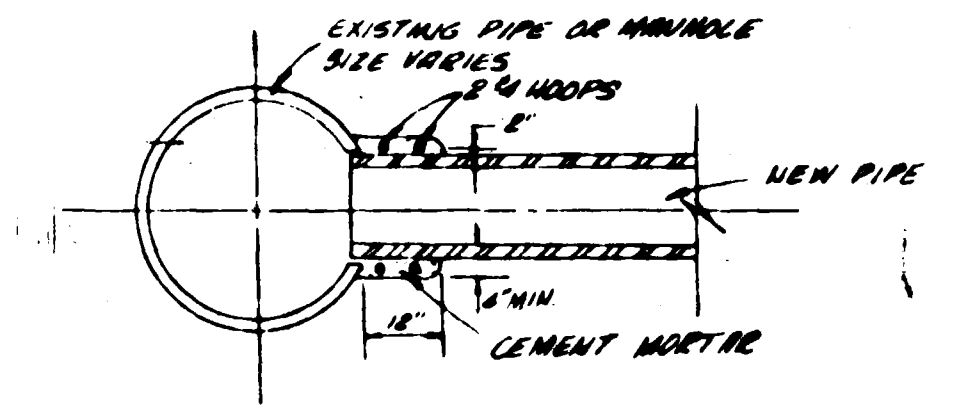


CHECKED	
DATE	April, 1979
SCALE	As Shown
REVISIONS	BY

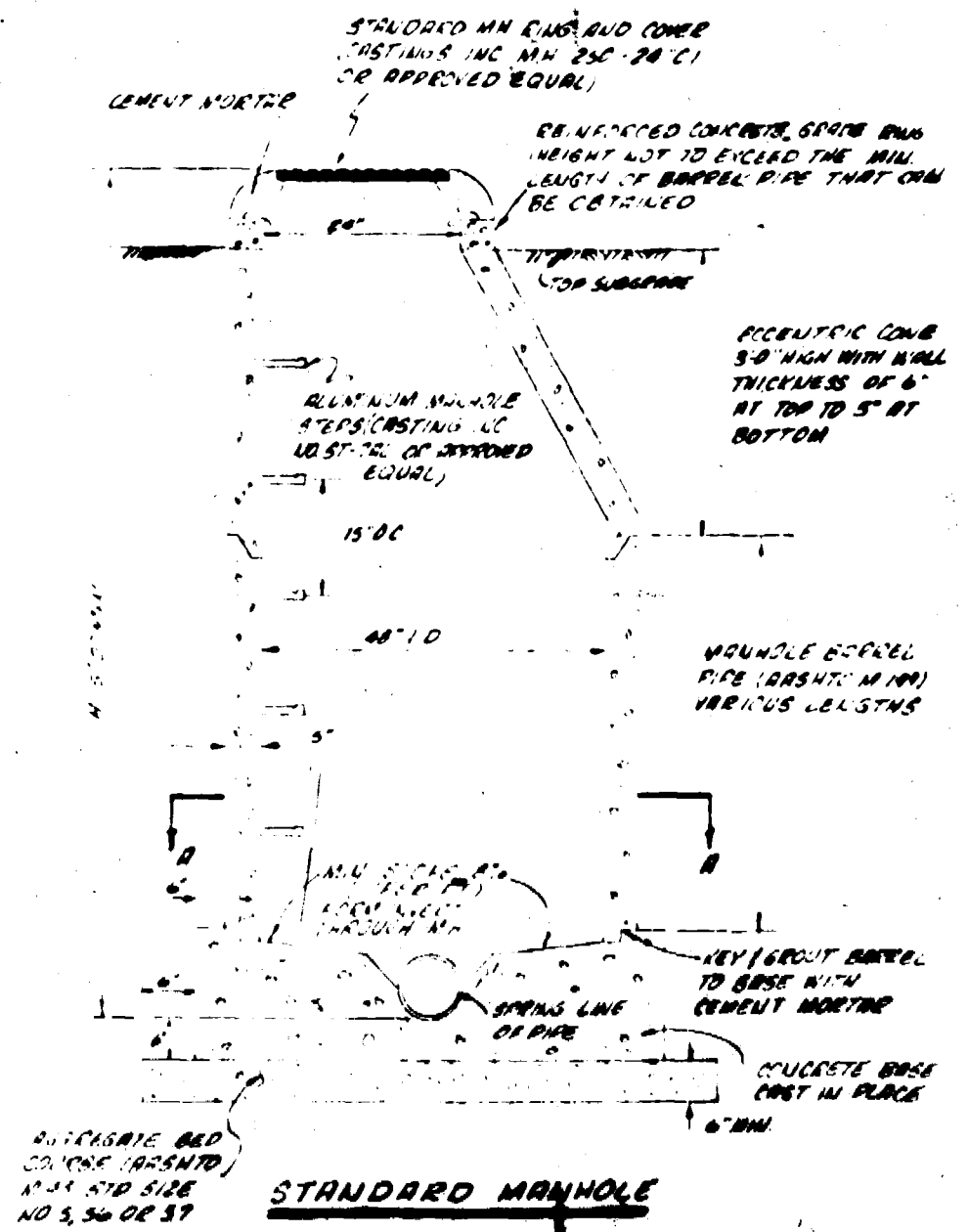
PARAGON ENGINEERING, INC.
 P.O. Box 1972
 Grand Junction, Colorado 81501 (970) 243-8900



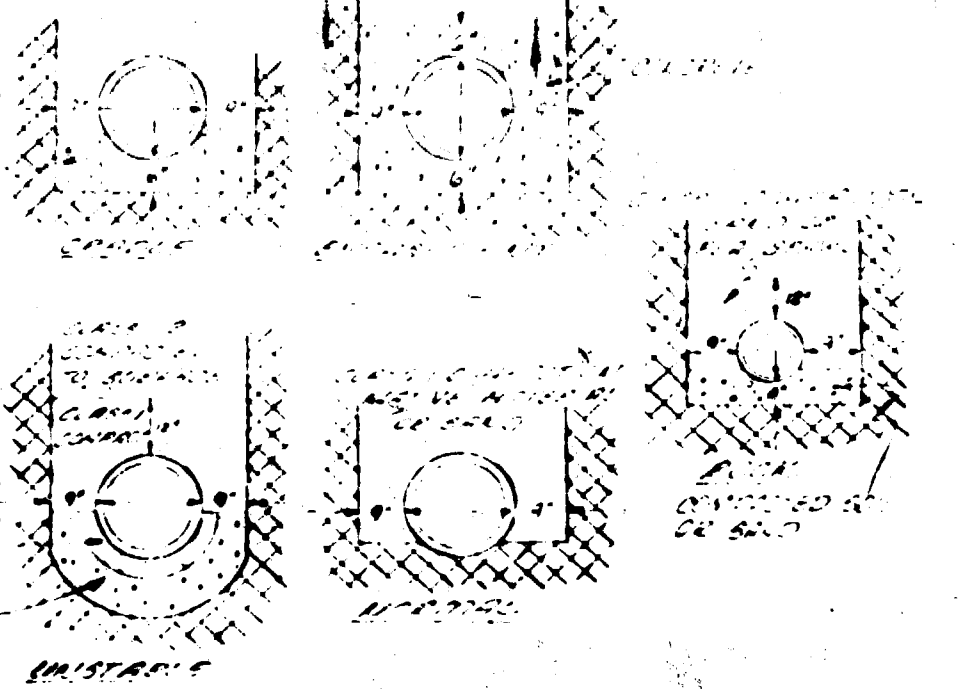
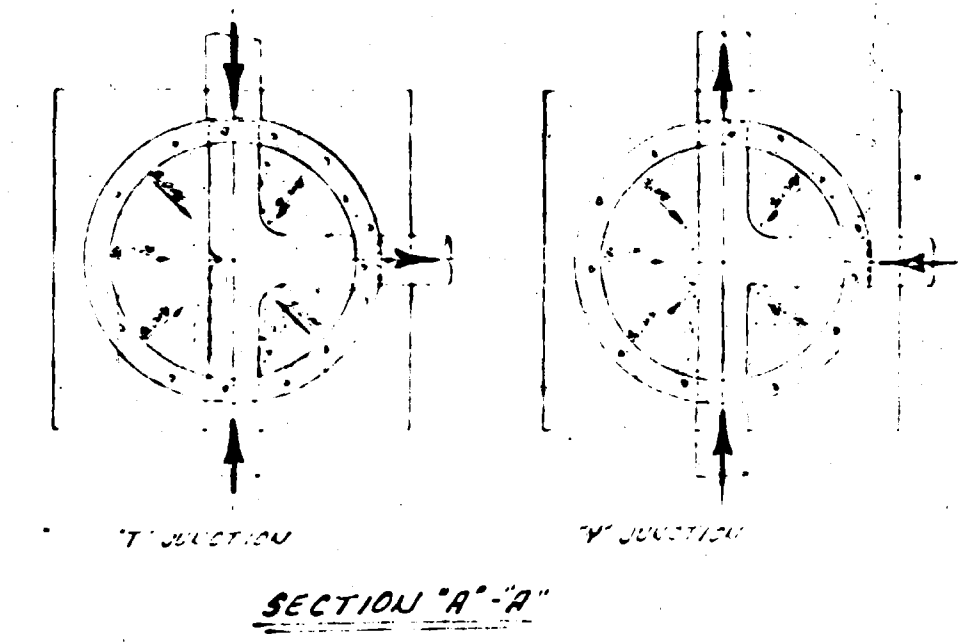
LAVERDALE SUBDIVISION
 FILING NO. TWO
 MESA COUNTY, COLORADO
 SANITARY SEWER PLANS & DETAILS



CONNECTION TO EXISTING MANHOLE OR PIPE



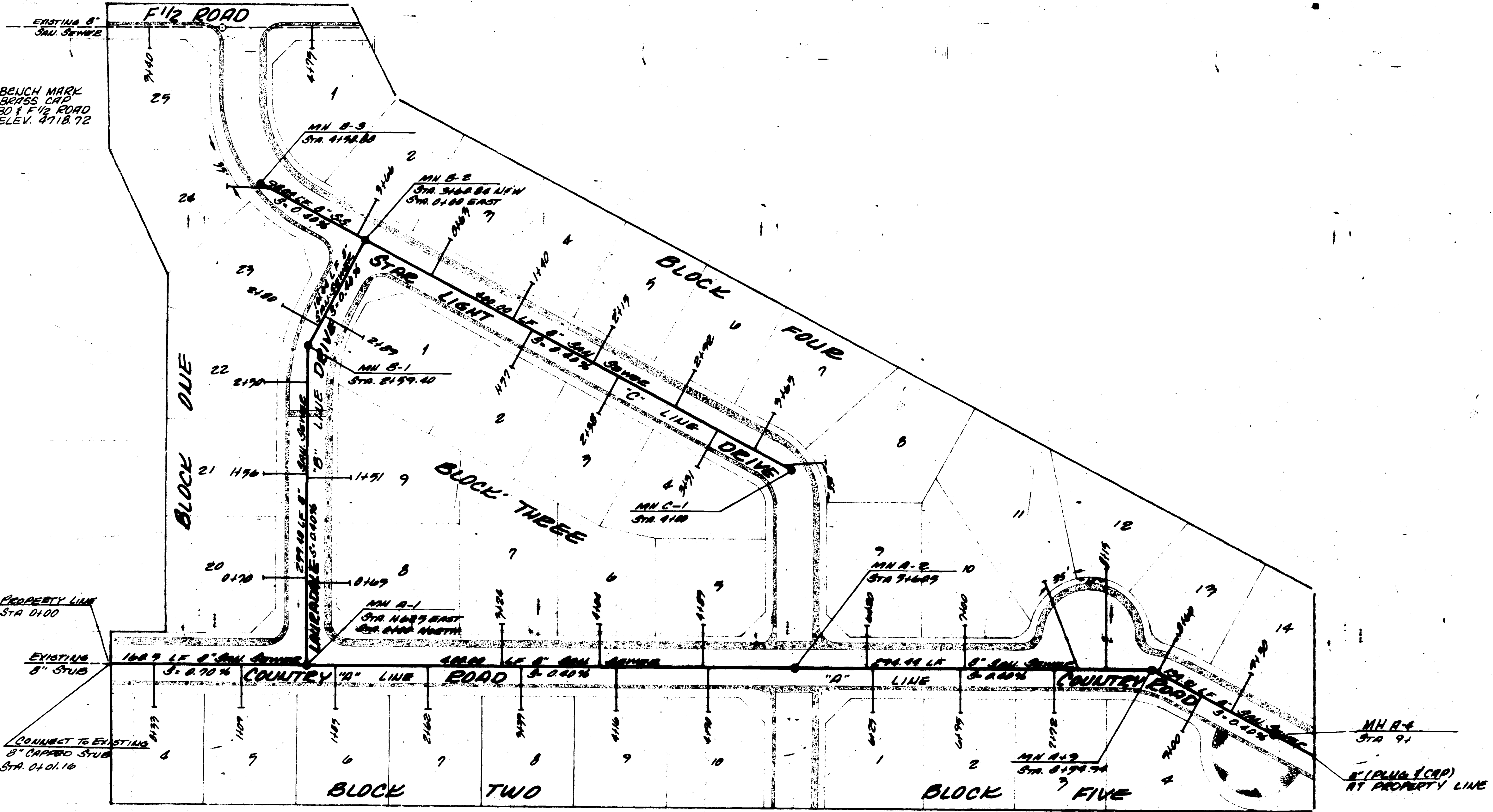
STANDARD MANHOLE



TYPICAL BEDDING DETAIL

NOTE:
 This is to certify that the system installation does not exceed 300 gallons per inch diameter per mile of length per day.

AS BUILT DRAWINGS



BENCH MARK
 GRAVITY CAP
 30' x 12" ROAD
 ELEV. 4718.72

PROPERTY LINE
 STA. 0+00

EXISTING
 8" STUB

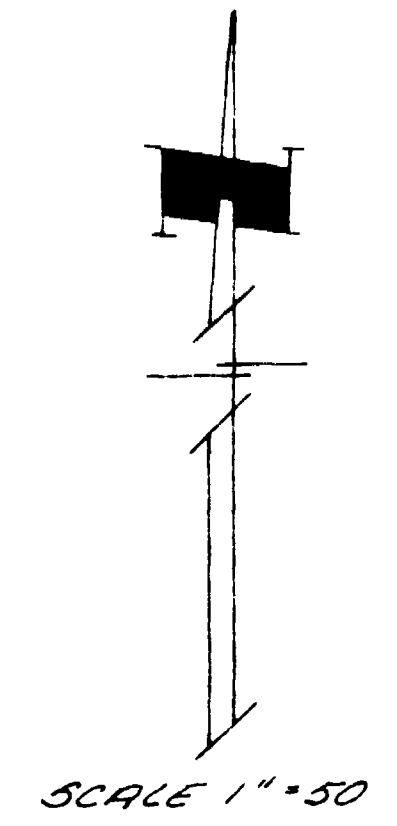
CONNECT TO EXISTING
 8" CAP AND STUB
 STA. 0+01.16

GENERAL NOTES:

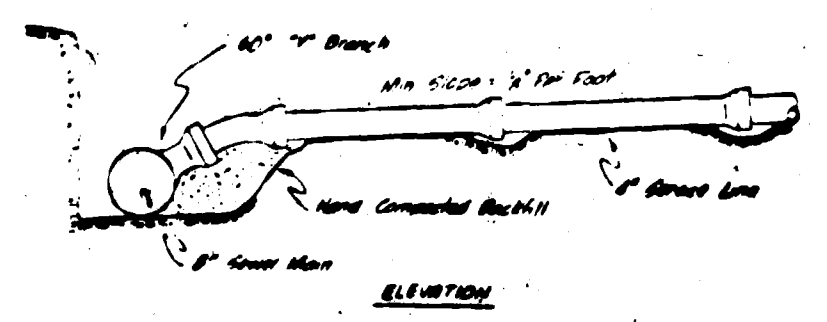
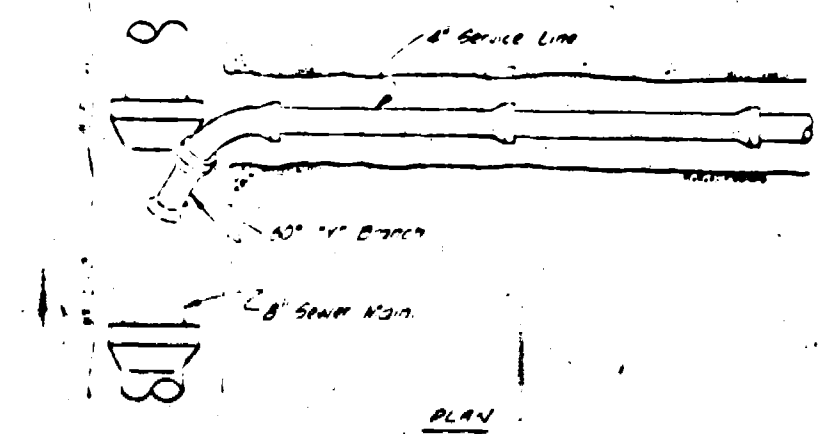
- All construction to be done in accordance with the City of Grand Junction Sanitation Department Specifications for Sanitary Sewerage (Standard Specifications for Sanitary Sewerage).
- Service connections will be set from lot centerline on downward slope and shall extend 10 feet into lot.
- If utility lines are located within 10 feet of the sewer line, they shall be protected by a concrete or metal sleeve.
- Minimum cover over sewer lines shall be 4 feet in residential areas and 5 feet in commercial areas.

QUANTITIES

- 8 Standard Manholes
- 40 Service Connections
- 1865 Feet of Sanitary Sewer

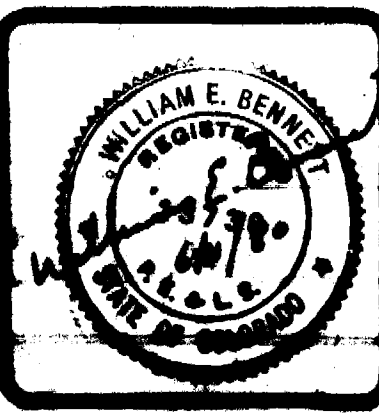
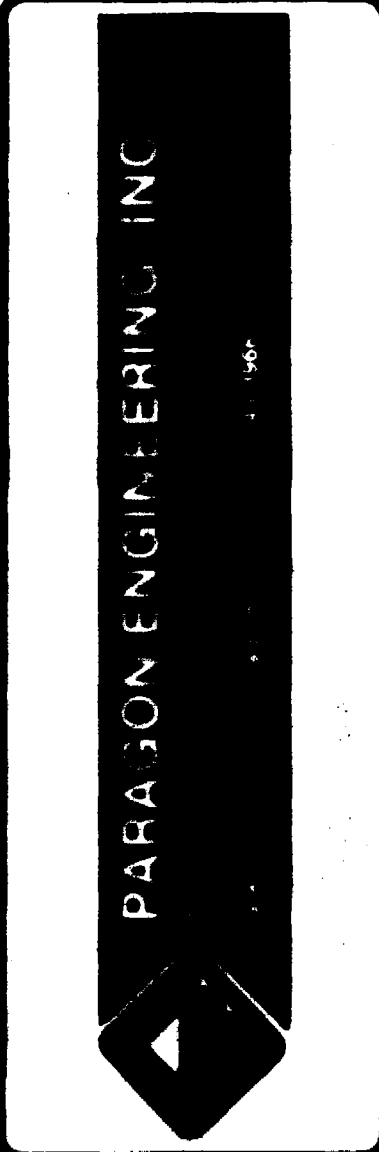


SCALE 1" = 50'

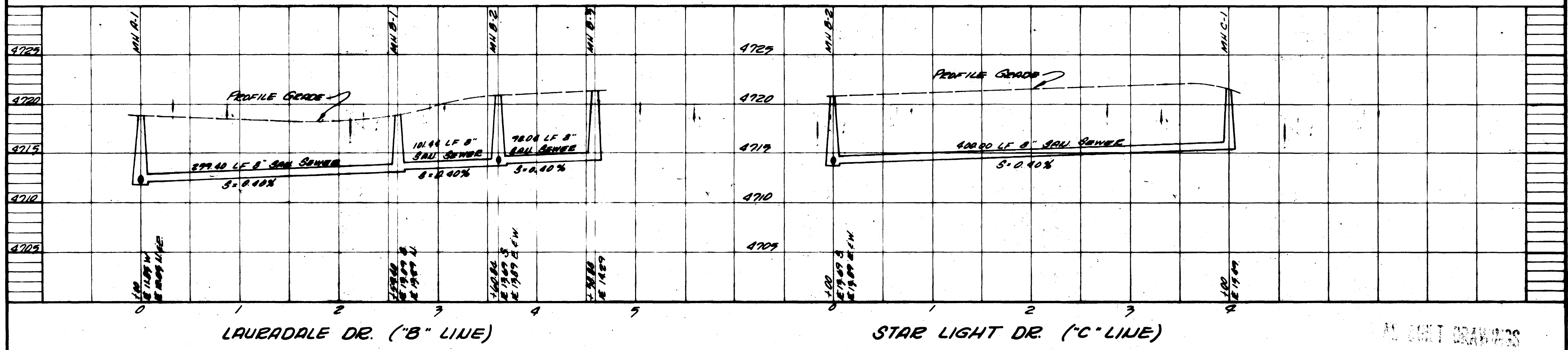
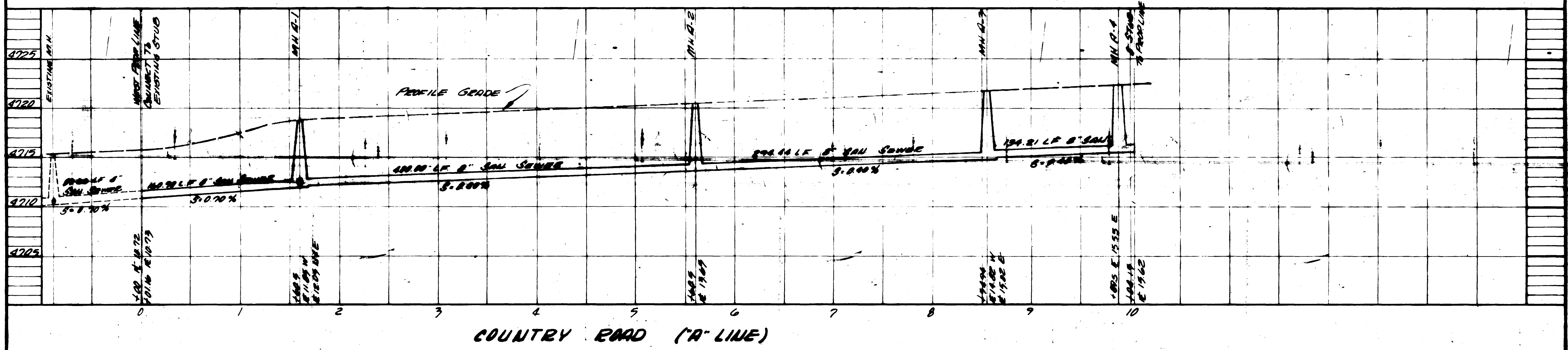
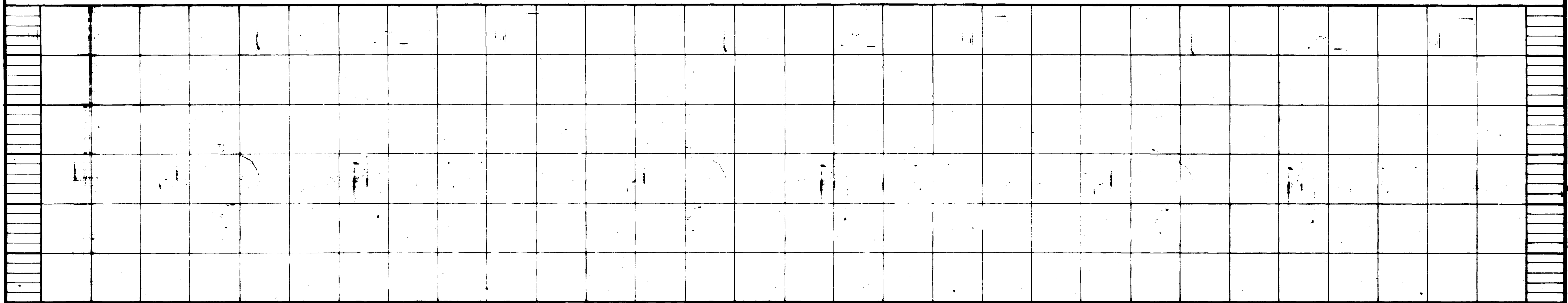


STANDARD SERVICE CONNECTION

REVISIONS	BY



LAURADALE SUBDIVISION
 FILING NO. TWO
 MESA COUNTY, COLORADO
 SANITARY SEWER PROFILES



ALL POINT DRAWINGS