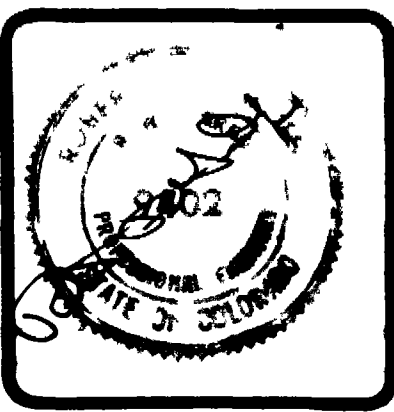
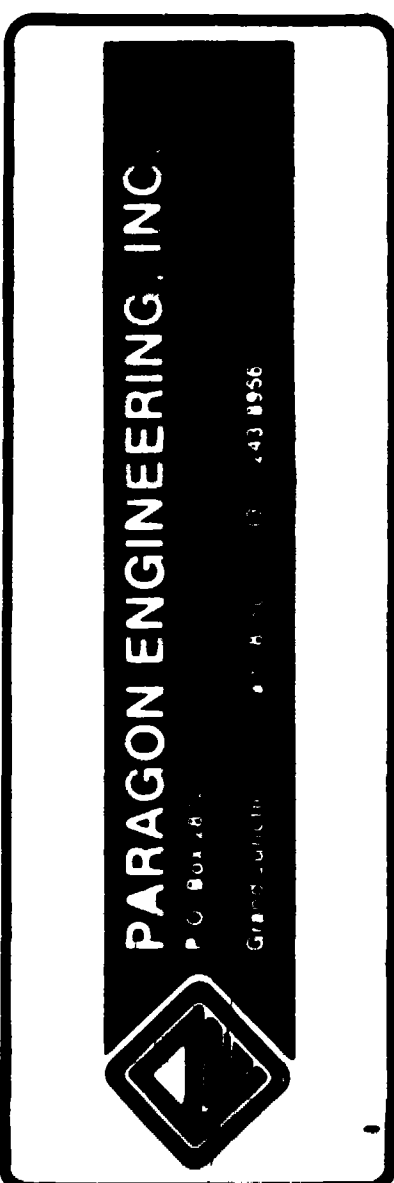
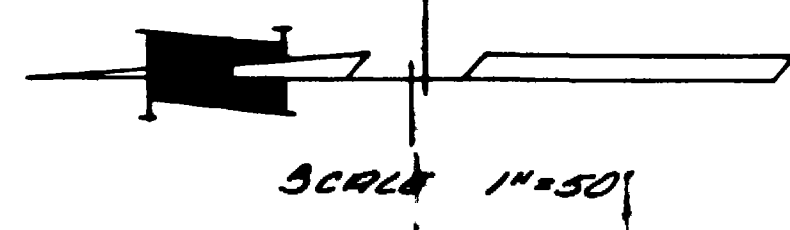
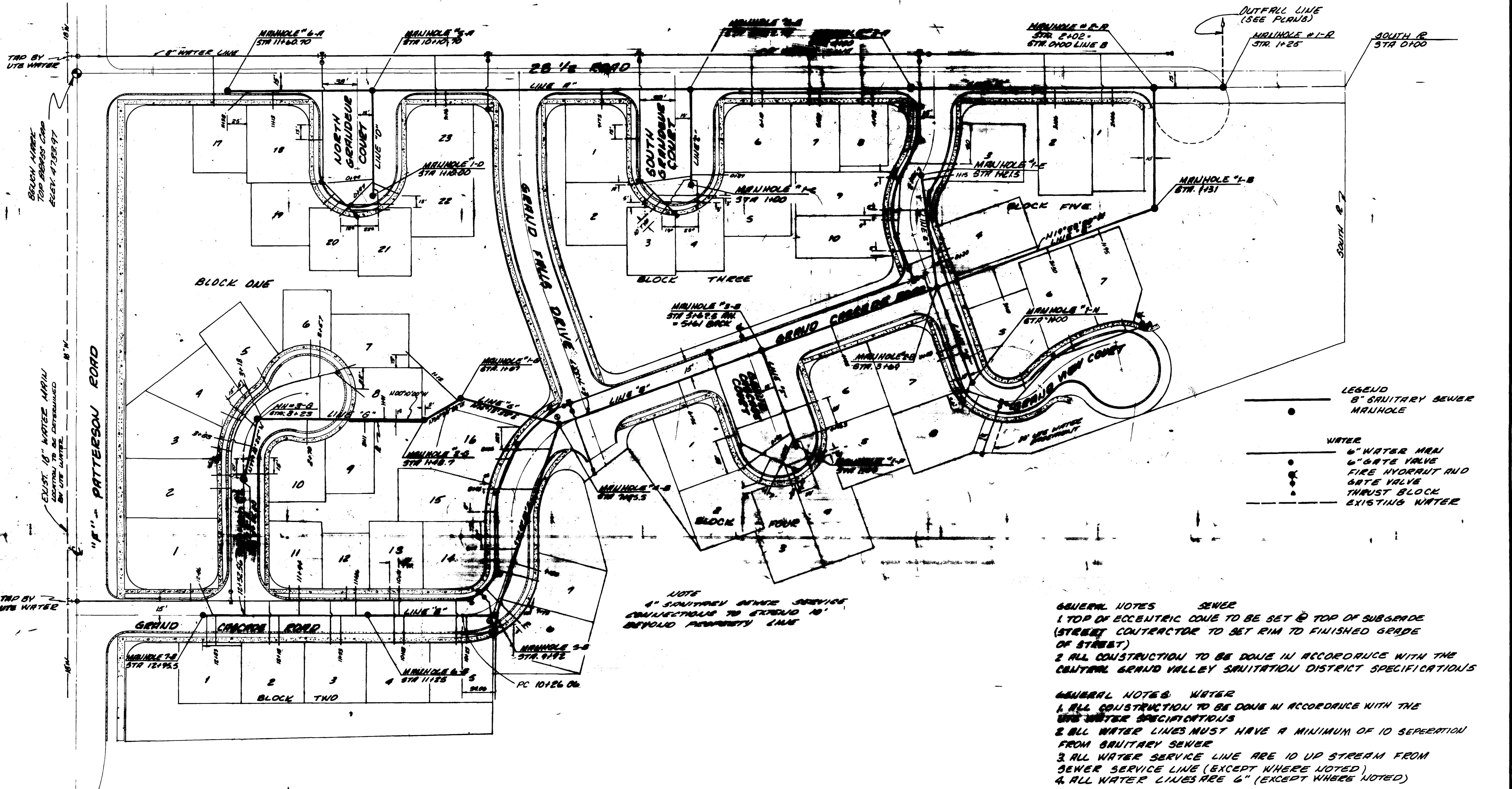


CHECKED	
DATE	JANUARY 1979
SCALE	1"=50'
REVISIONS	BY
REVISED 11/27/79	KFM



THE FALLS FILING NO ONE
 CITY OF GRAND JUNCTION, COLORADO
 SANITARY SEWER PLAN AND WATER PLAN

SHEET	1
OF	5 SHEETS



NOTE
 4" SANITARY SERVICE CONNECTIONS TO EXTEND 10' BEYOND PROPERTY LINE

GENERAL NOTES - SEWER

1. TOP OF ECCENTRIC COUPE TO BE SET @ TOP OF SUBGRADE (STREET CONTRACTOR TO SET RIM TO FINISHED GRADE OF STREET)
2. ALL CONSTRUCTION TO BE DONE IN ACCORDANCE WITH THE CENTRAL GRAND VALLEY SANITATION DISTRICT SPECIFICATIONS

GENERAL NOTES - WATER

1. ALL CONSTRUCTION TO BE DONE IN ACCORDANCE WITH THE UTE WATER SPECIFICATIONS
2. ALL WATER LINES MUST HAVE A MINIMUM OF 10 SEPERATION FROM SANITARY SEWER
3. ALL WATER SERVICE LINE ARE 10' UP STREAM FROM SEWER SERVICE LINE (EXCEPT WHERE NOTED)
4. ALL WATER LINES ARE 6" (EXCEPT WHERE NOTED)

WATER QUANTITIES	SANITARY SEWER
2706 LF 6" WATER LINE	21 STANDARD MANHOLES
6 EA FIRE HYDRANT AND GATE VALVES	1 SHALLOW MANHOLE
13 EA GATE VALVES	3411 LF 8" SANITARY SEWER LINE
65 EA SERVICE CONNECTION	55 EA SERVICE CONNECTION
1180 LF 8" WATER LINE	

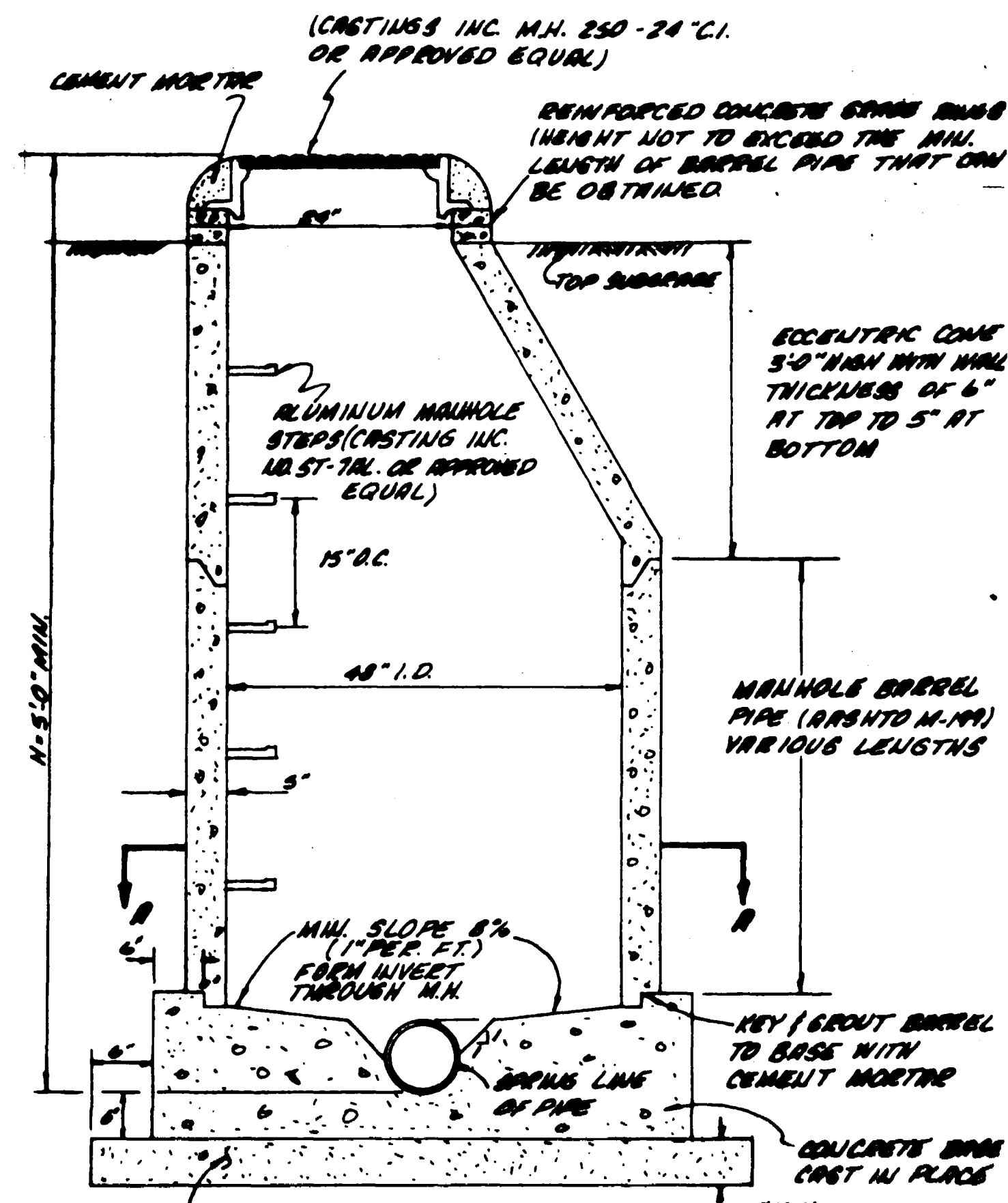
AS BUILT DRAWINGS

APPROVED _____ DATE _____
 CENTRAL GRAND VALLEY SANITATION DISTRICT

APPROVED _____ DATE _____
 UTE WATER

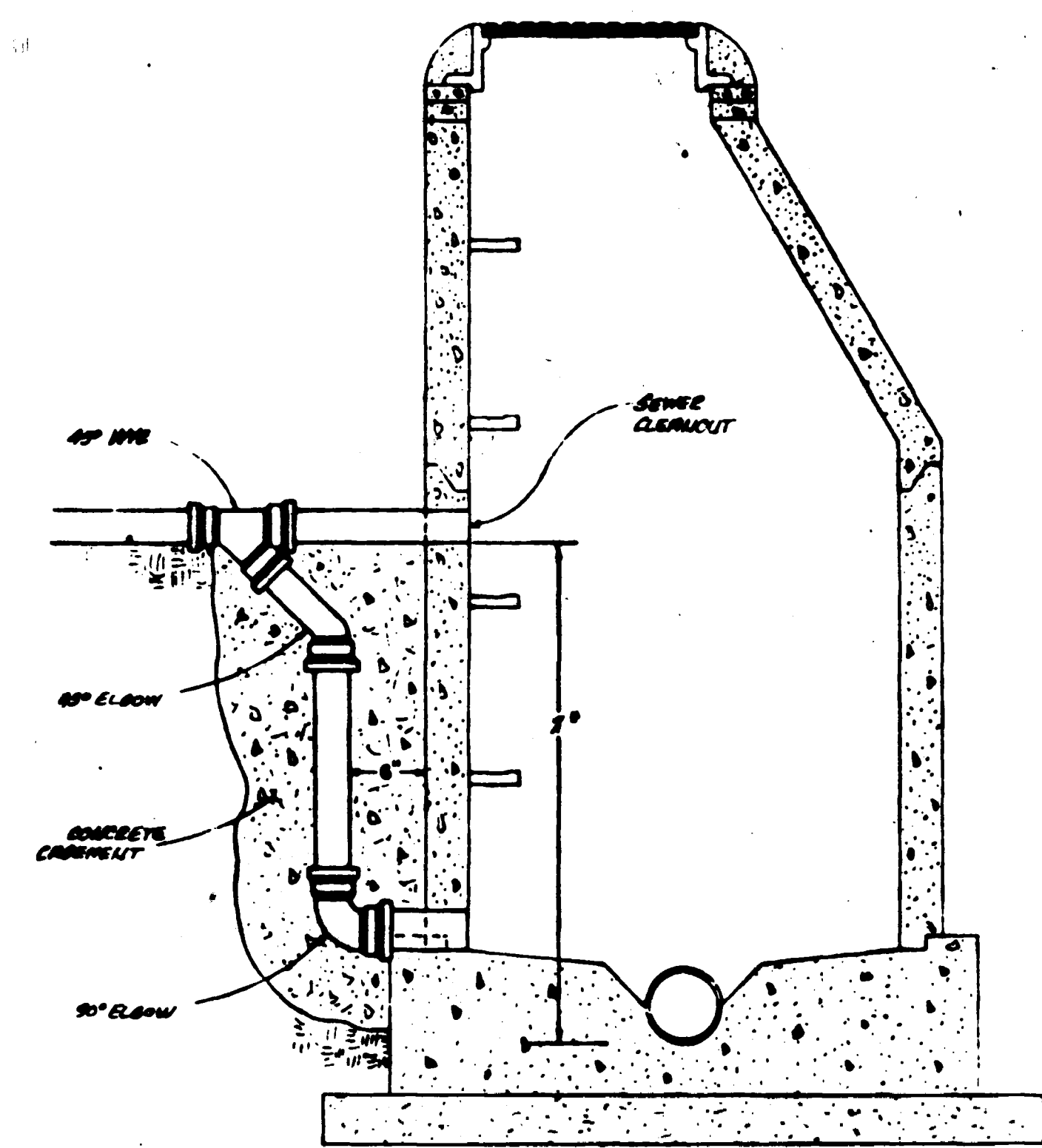
APPROVED _____ DATE _____
 CITY OF GRAND JUNCTION, UTILITIES ENG

NOTE
 This is to certify that the system infiltration does not exceed 500 gallons per inch diameter per mile of length per day



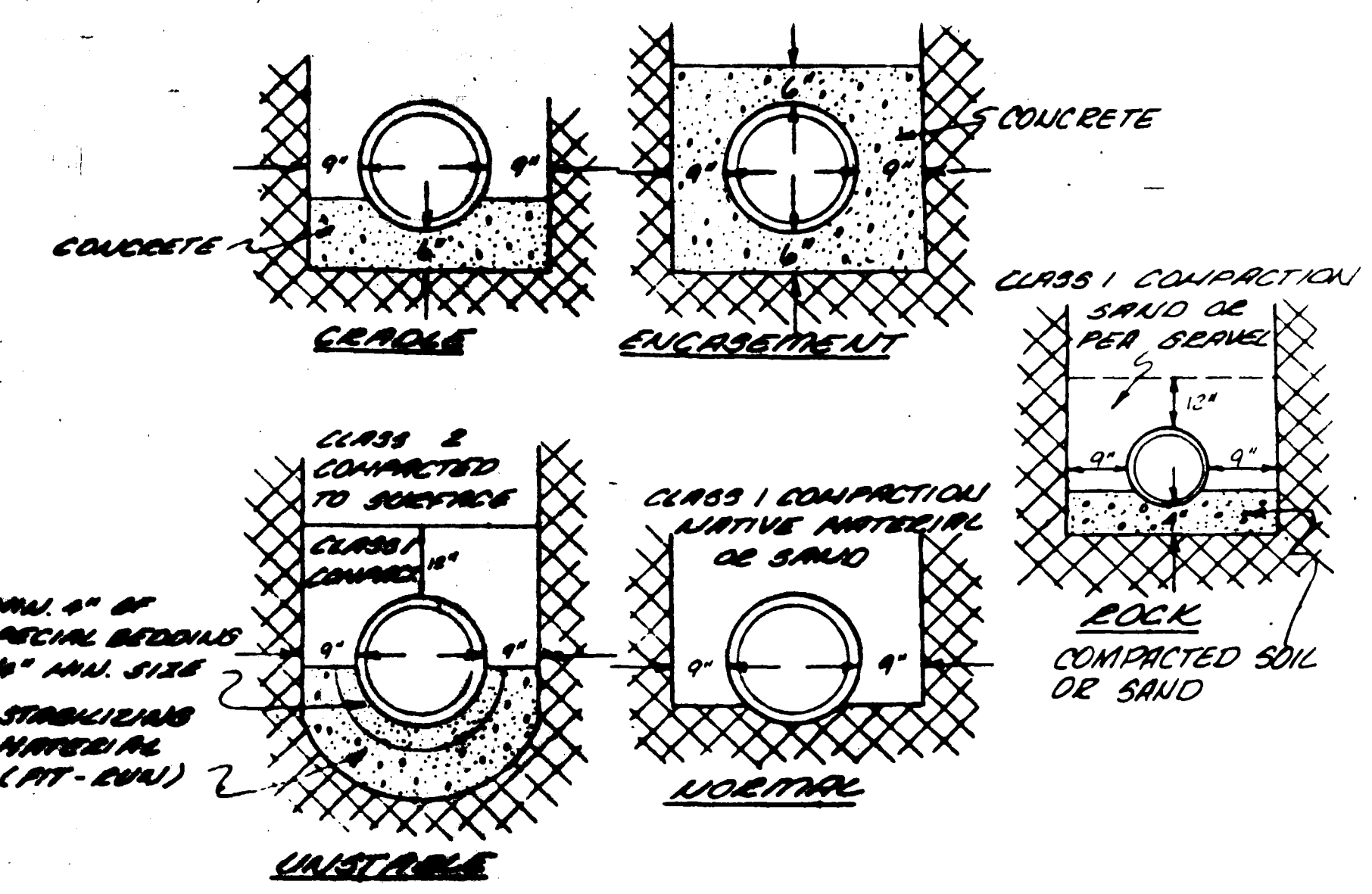
STANDARD MANHOLE

ASBTD RING AND COUPLER (ASBTD) M.H. 250-24" C.I. OR APPROVED EQUAL



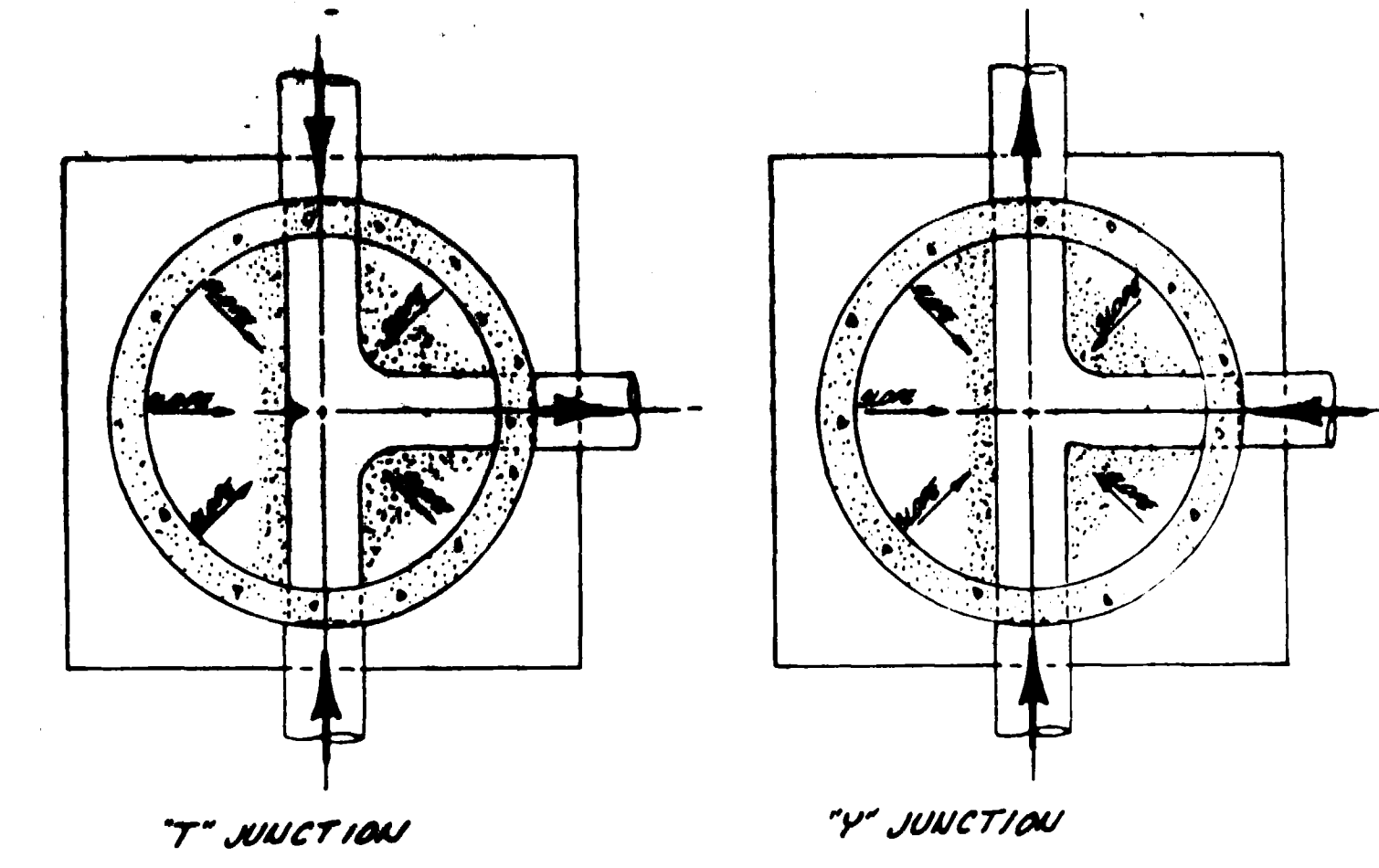
DROP MANHOLE

* OUTSIDE DROP REQUIRED WHEN X IS GREATER THAN 24" WHEN X IS LESS THAN 24" FROM CONCRETE INVERT FROM PIPE TO S MANHOLE

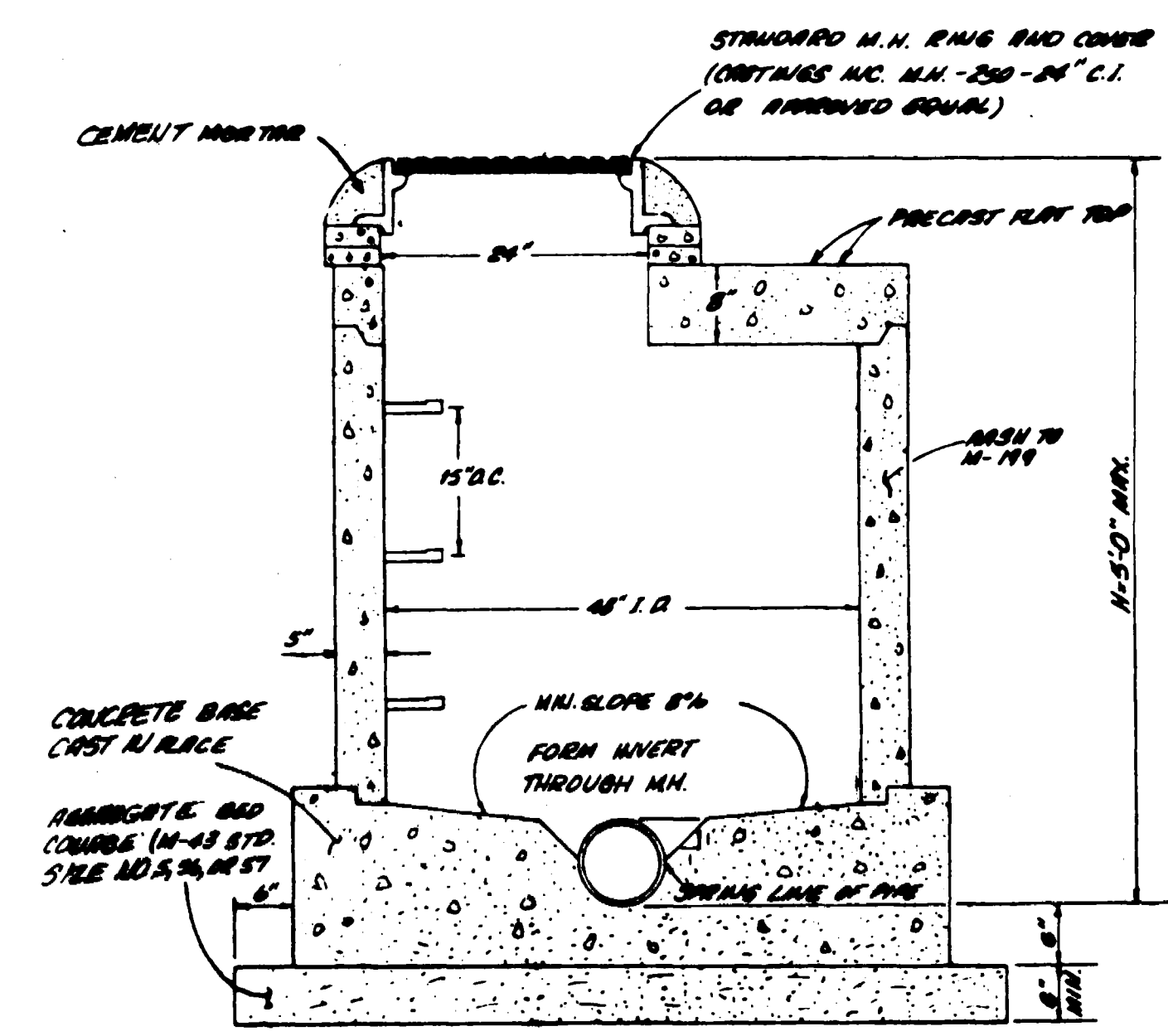


TYPICAL BEDDING DETAIL

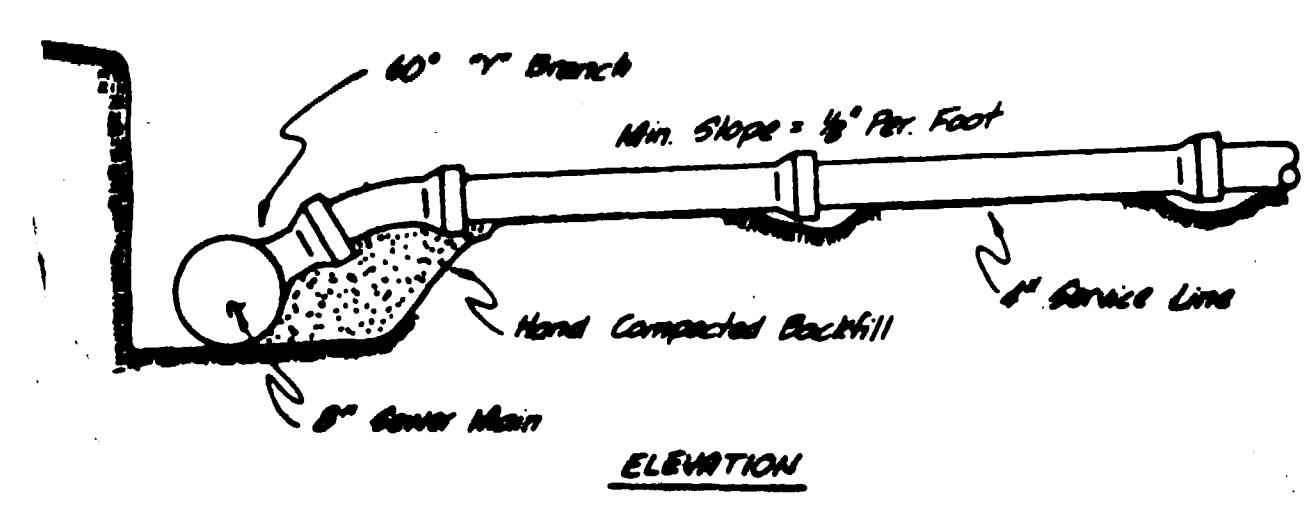
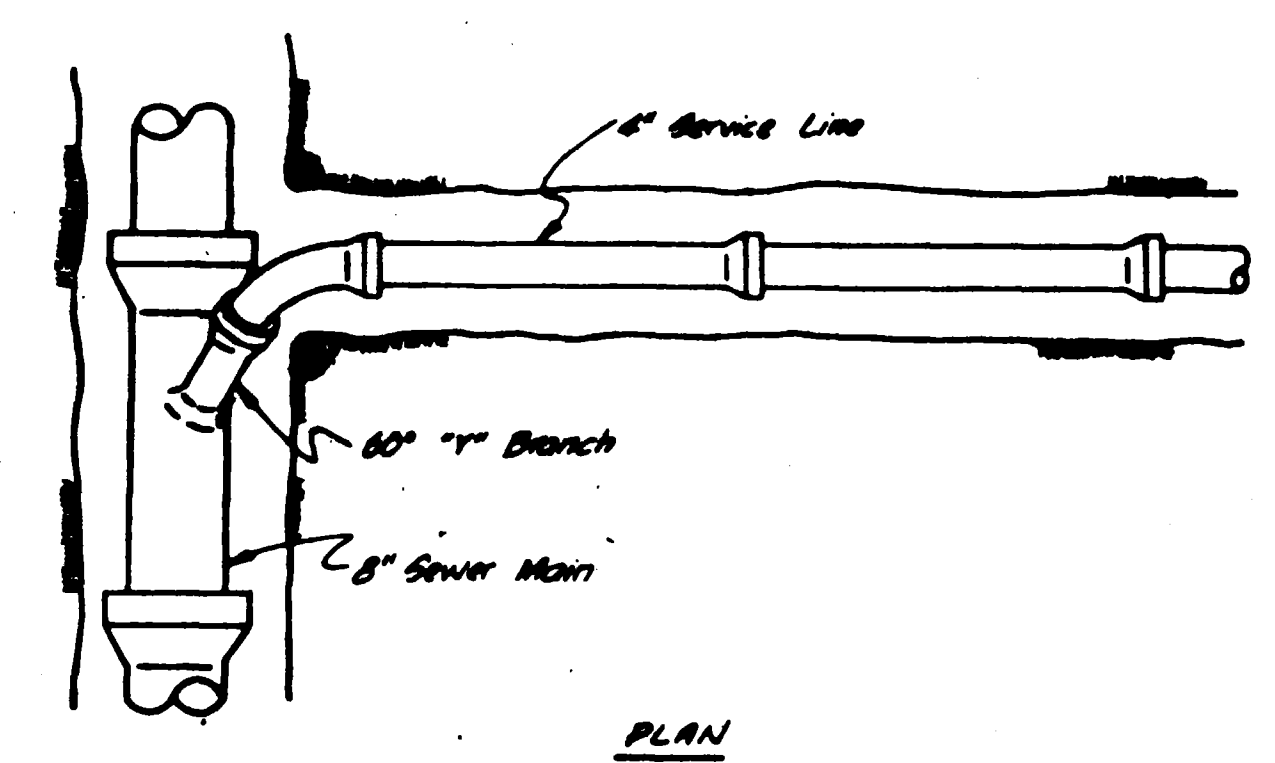
N.T.S. MIN. DIA FOR BELL OF COUPLER



SECTION "A"-A"



STANDARD SHALLOW MANHOLE



STANDARD SERVICE CONNECTION

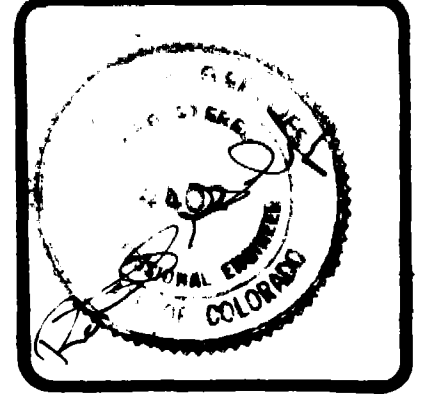
N.T.S.

AS BUILT DRAWINGS

SCALE

BY

PARAGON ENGINEERING, INC.
P.O. Box 3872
Grand Junction, Colorado 81501 (970) 243-8866



THE FALLS FILLS FILING OFFICE
CITY OF GRAND JUNCTION, COLORADO
SANITARY SEWER DETAILS

JANUARY 1979
1" = 20' VERT.
1" = 5' HORIZ.

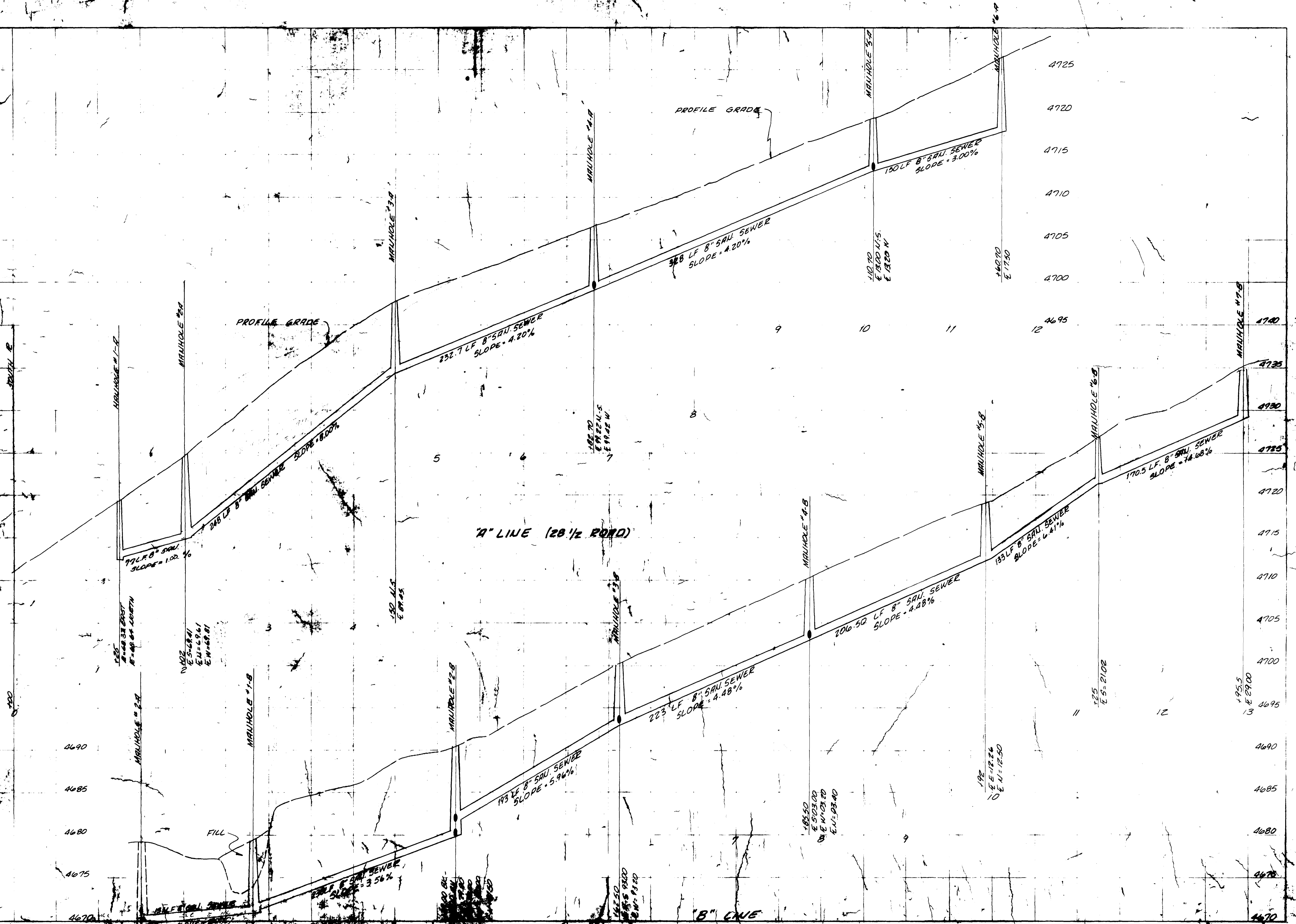
REVISED 11/17/78 KRM

PARAGON ENGINEERING, INC.
1100 Colorado St., Suite 110
Denver, Colorado 80202



THE FALLS FILING NO ONE
CITY OF GRAND JUNCTION, COLORADO
SANITARY SEWER PROFILES

ASHEET
A
5 SHEETS



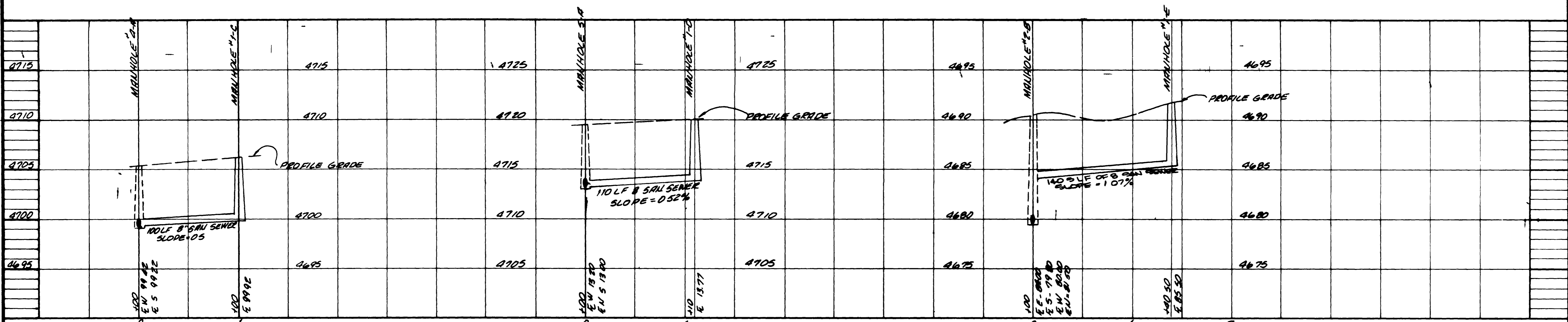
AS BUILT DRAWINGS

REVISIONS	BY
REVISED 11/27/79	KEM

PARAGON ENGINEERING, INC.
1015 W. 10TH ST., DENVER, CO. 80202
GRAND JUNCTION, COLORADO 81501 (303) 243-4888



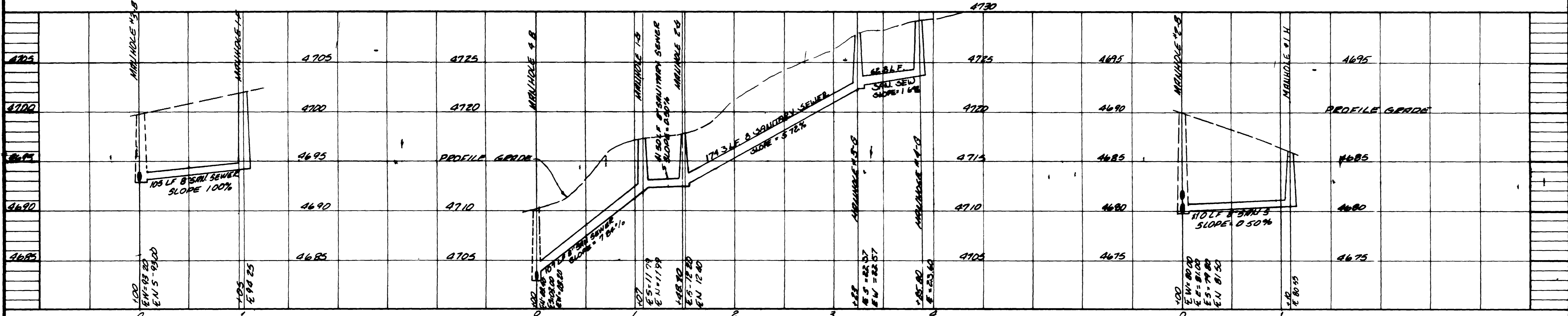
THE FALLS FILING NO ONE
CITY OF GRAND JUNCTION, COLORADO
SANITARY SEWER PROFILES



LINE "C"

LINE "D"

LINE "E"



LINE "F"

LINE "G"

LINE "H"

AS BUILT DRAWINGS