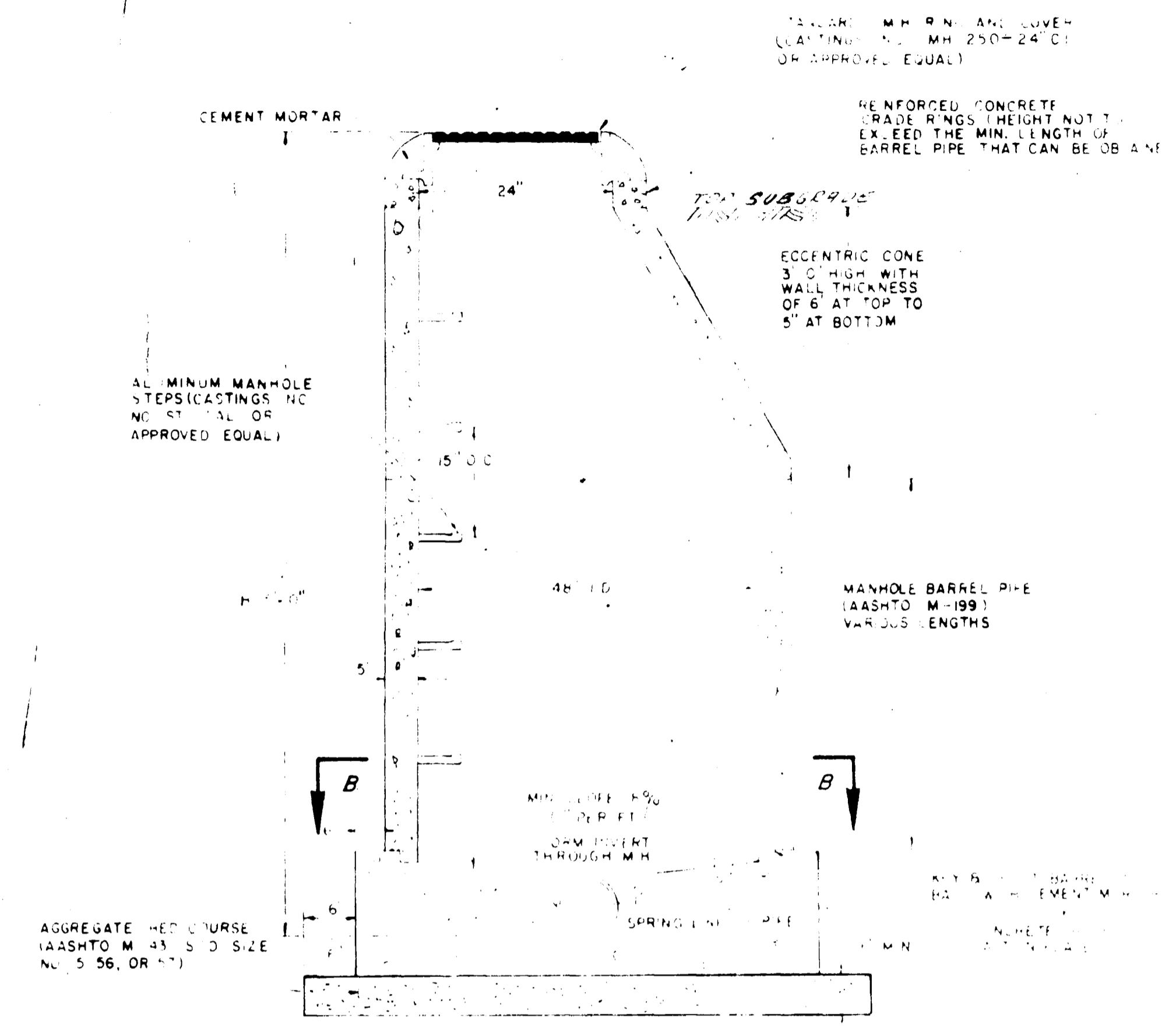
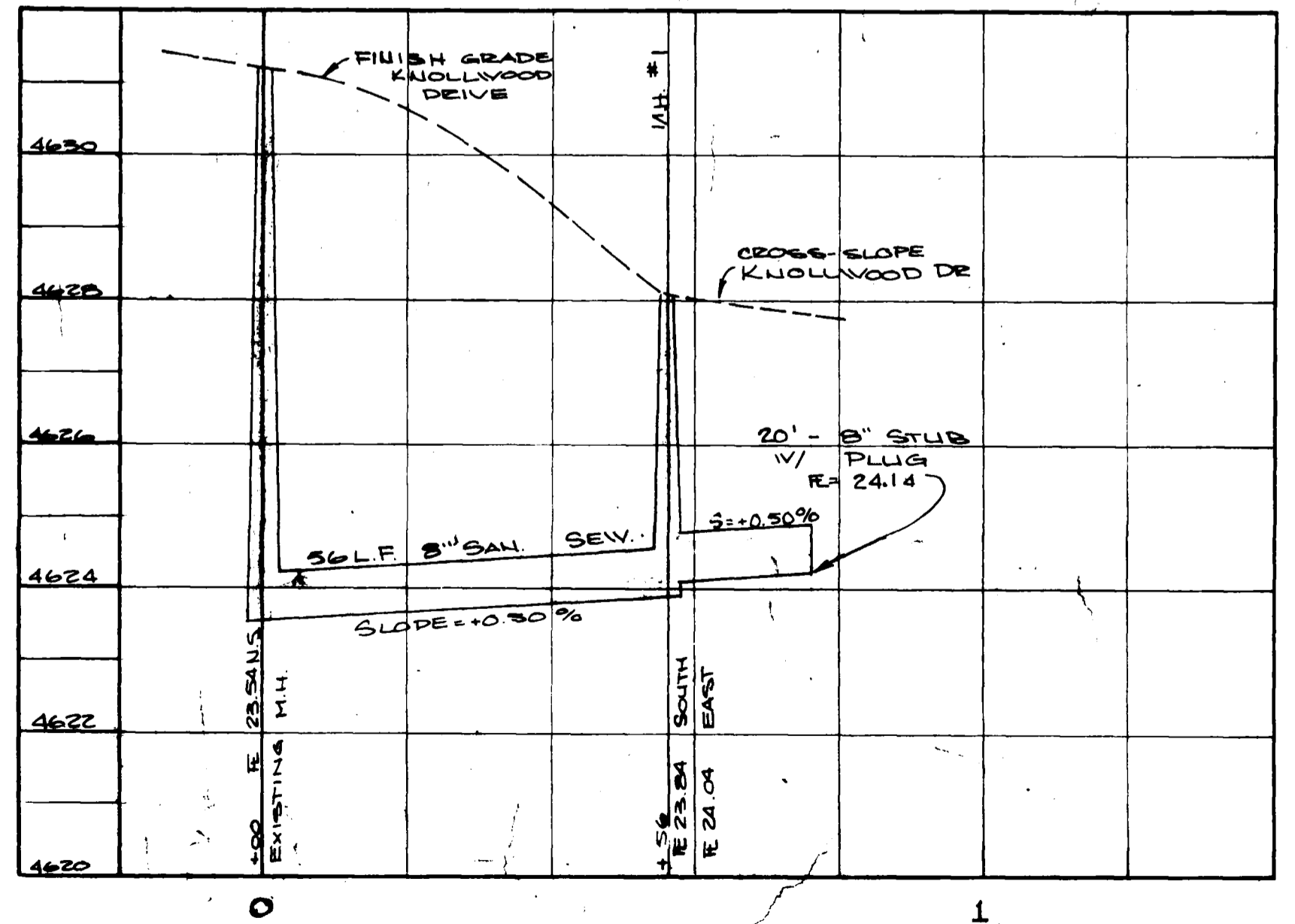


STANDARD SERVICE CONNECTION DETAIL



STANDARD MANHOLE



NOTE:
 This is to certify that the system infiltration does not exceed 200 gallons per inch diameter per mile of length per day.

1. ALL CONSTRUCTION TO BE DONE IN ACCORDANCE WITH THE CITY OF GRAND JUNCTION SPECIFICATIONS.
2. TOP OF ECCENTRIC CONE TO BE SET AT TOP SUBGRADE. STREET CONTRACTOR TO SET R/W'S TO FINISH GRADE OF STREETS.
- 3.

AS BUILT DRAWINGS

APPROVED _____ DATE _____
 GRAND JUNCTION CITY ENGINEER