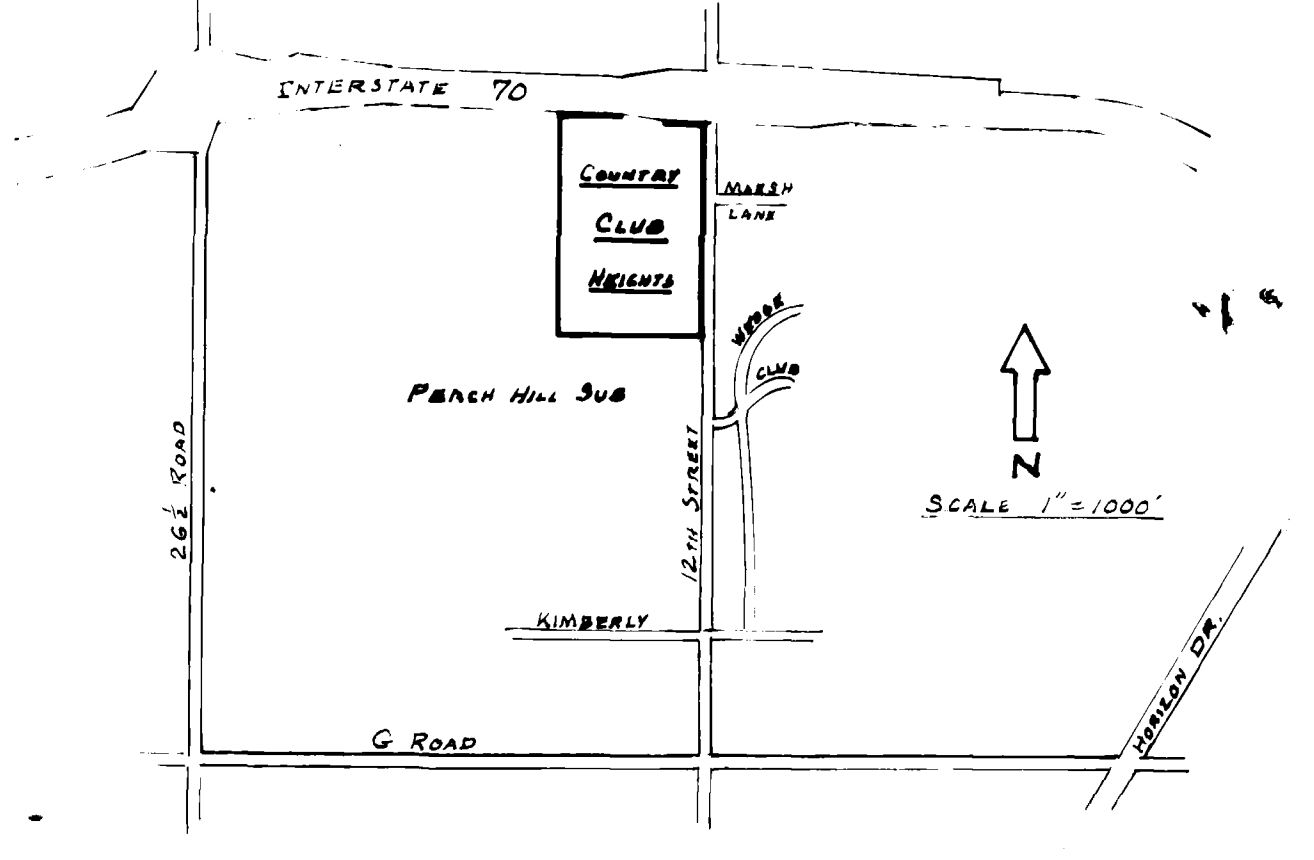
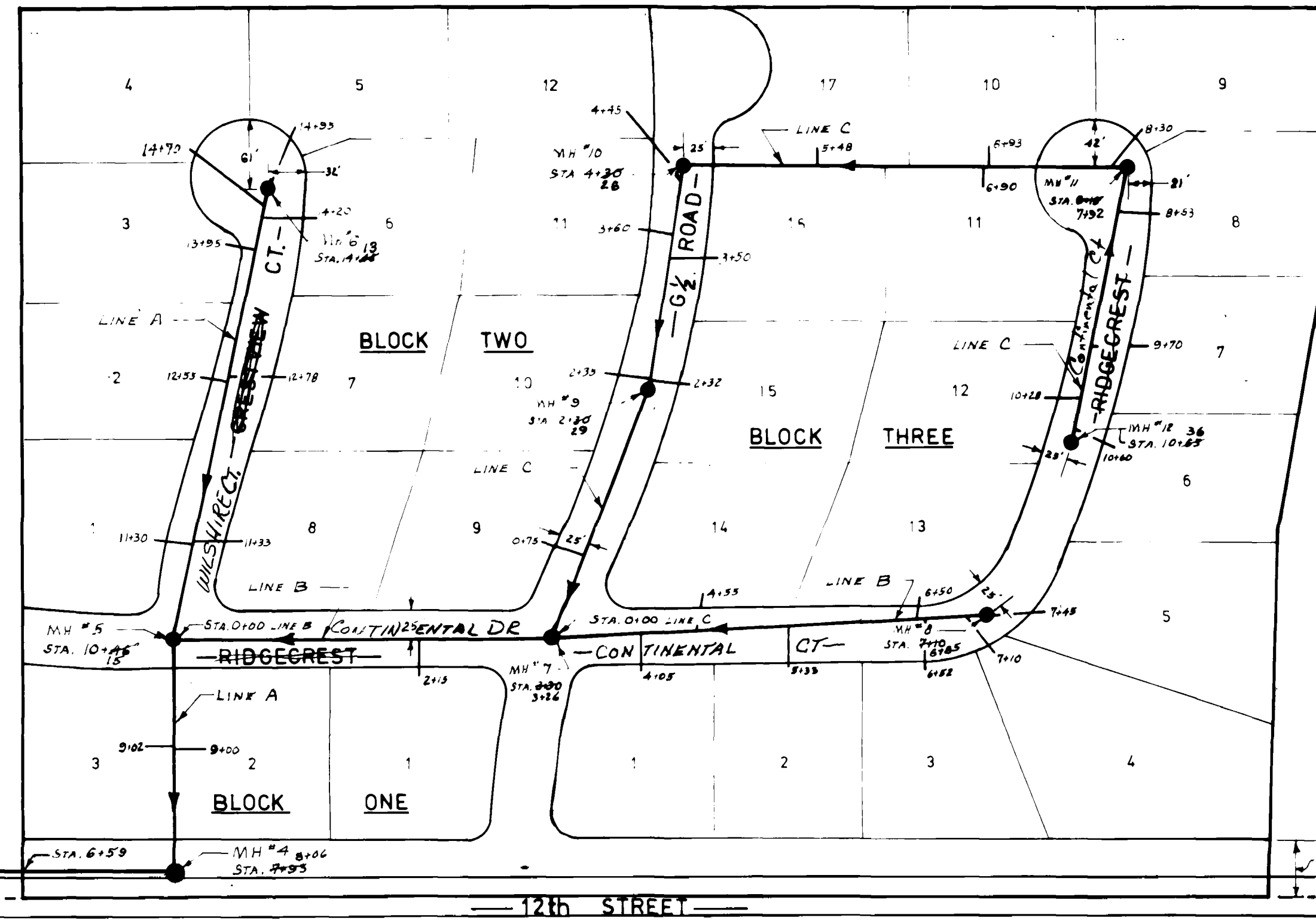


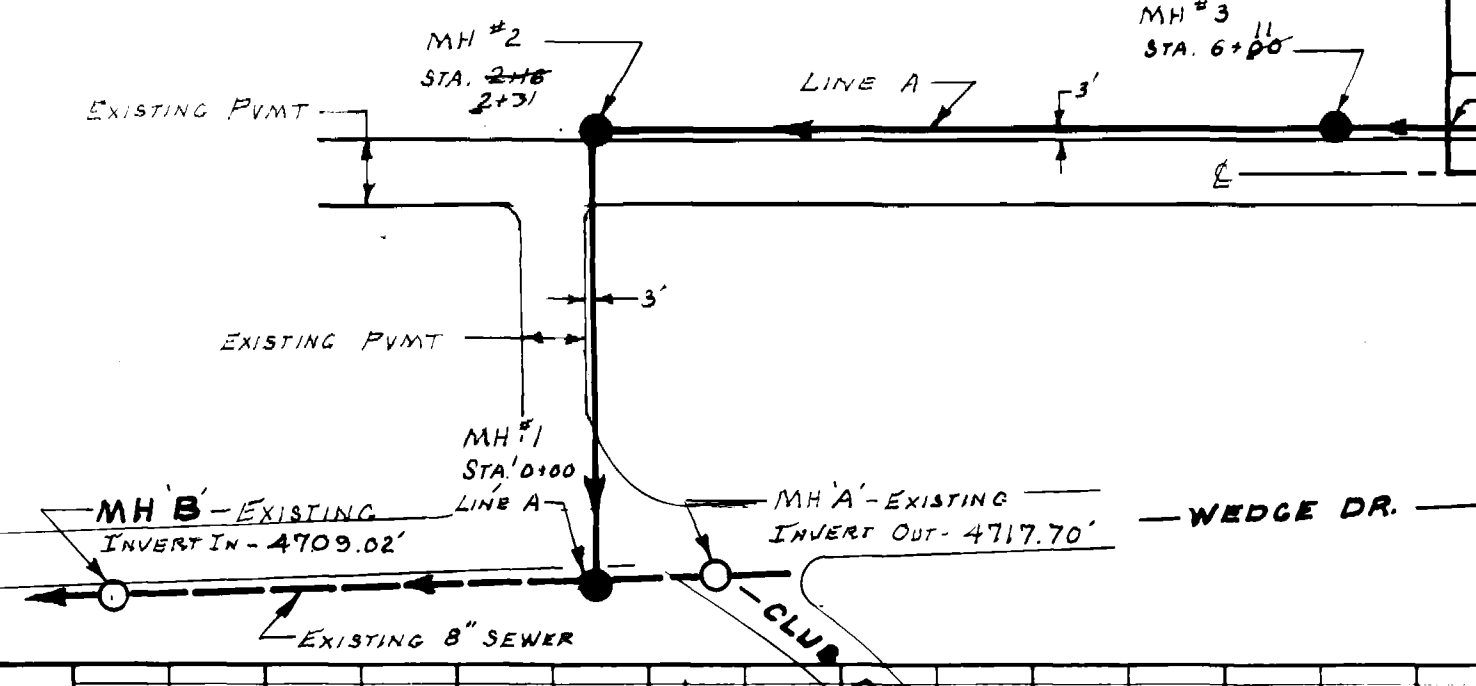
I CERTIFY THE QUALITY OF MATERIALS & INSTALLATION, INCLUDING TRENCH COMPACTION, TO CITY OF GRAND JUNCTION SPECIFICATIONS AND STANDARD SANITARY SEWER DETAILS *Boyle State* 6-4-80

I CERTIFY THE PHYSICAL GEOMETRY OF THE AS BUILT SEWER CONFIGURATION & INFILTRATION-EXFILTRATION DOES NOT EXCEED 200 GR/INCH. *R. S. Colburn P.E. #7444* 6-4-80

NOTE: LATERAL STATIONS, MANHOLE TIES & RIM ELEVATIONS TO BE ADDED AFTER STREET PAVING IS C.



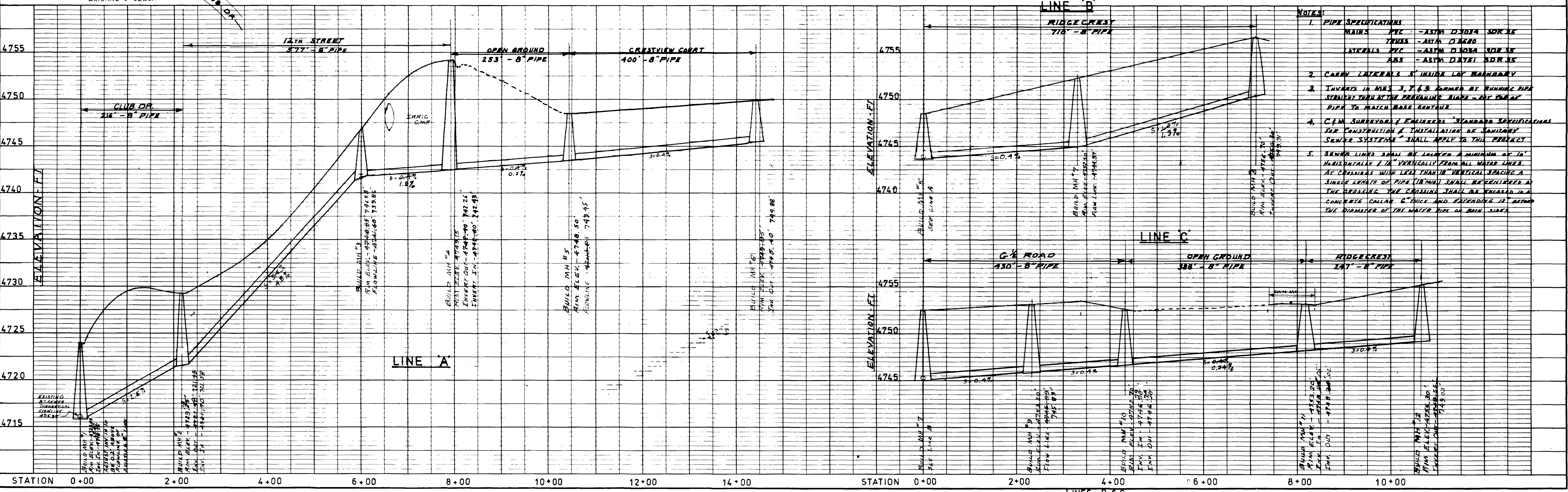
NOTE: LATERAL STATIONS ARE AT THE LOT LINE



LEGEND:
 ○ - EXISTING MANHOLE (MH)
 ● - NEW MANHOLE (MH)
 — - SEWER LINE & DIRECTION OF FLOW

SCALE 1" = 100'

James T. Patton 4-23-79
 CITY OF GRAND JUNCTION
 OWNER



- NOTES:
- PIPE SPECIFICATIONS
 MAINS PVC - ASTM D2000 SDR 35
 TRUNK - ASTM D2000 SDR 35
 LATERALS PVC - ASTM D2000 SDR 35
 ABS - ASTM D2000 SDR 35
 - CARRY LATERALS & INSIDE LOT MAINS
 - INVERTS IN MNS 3, 7 & 8 FORMED BY RUNNING PIPE STRAIGHT THROUGH PRECASTING SLAB - CUT TO AT PIPE TO MATCH BASE RENTALS
 - C.M. SURVEYOR'S ENGINEER'S STANDARD SPECIFICATIONS FOR CONSTRUCTION & INSTALLATION OF SANITARY SEWER SYSTEMS SHALL APPLY TO THIS PROJECT
 - SEWER LINES SHALL BE LAYED A MINIMUM OF 12" HORIZONTALLY & 12" VERTICALLY FROM ALL WATER LINES. AT CROSSINGS WITH LESS THAN 12" VERTICAL SPACING A SINGLE LENGTH OF PIPE (MINIMUM) SHALL BE REINFORCED AT THE CROSSING. THE CROSSING SHALL BE ENCASED IN A CONCRETE COLLAR 6" THICK AND EXTENDING 12" BEYOND THE DIAMETER OF THE WATER PIPE OR MAIN SIDES.