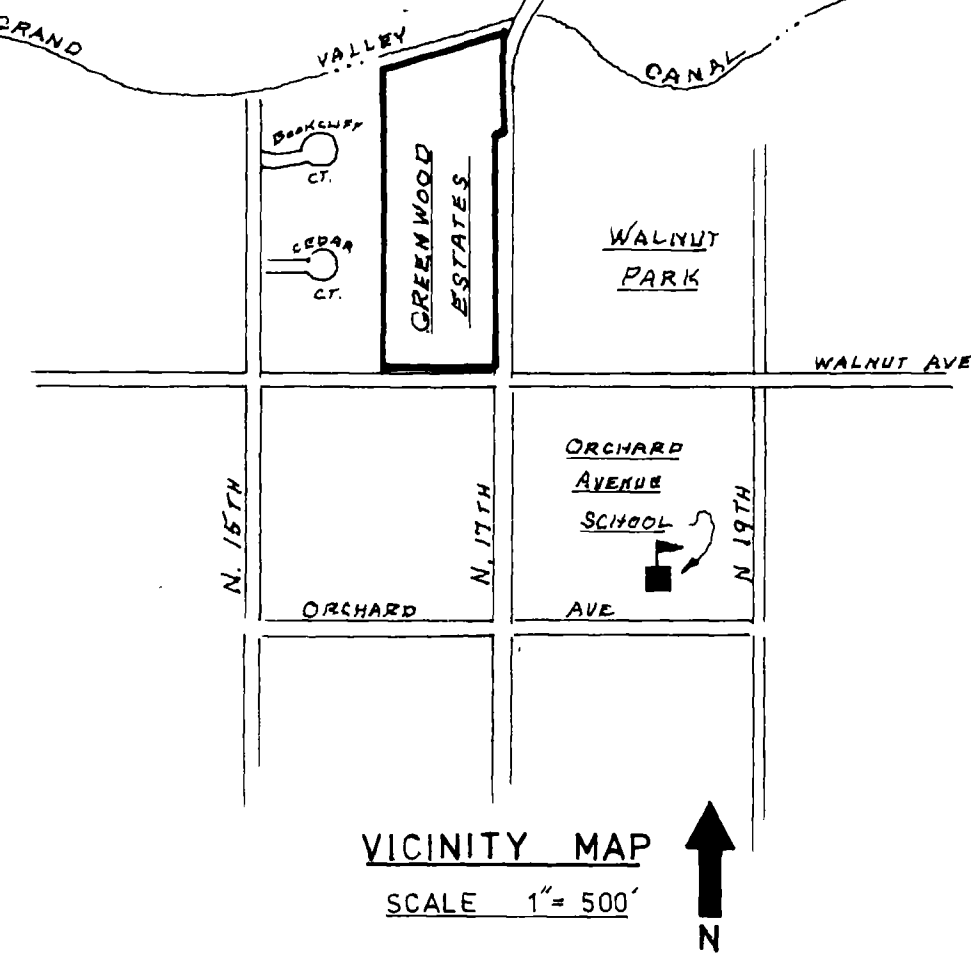
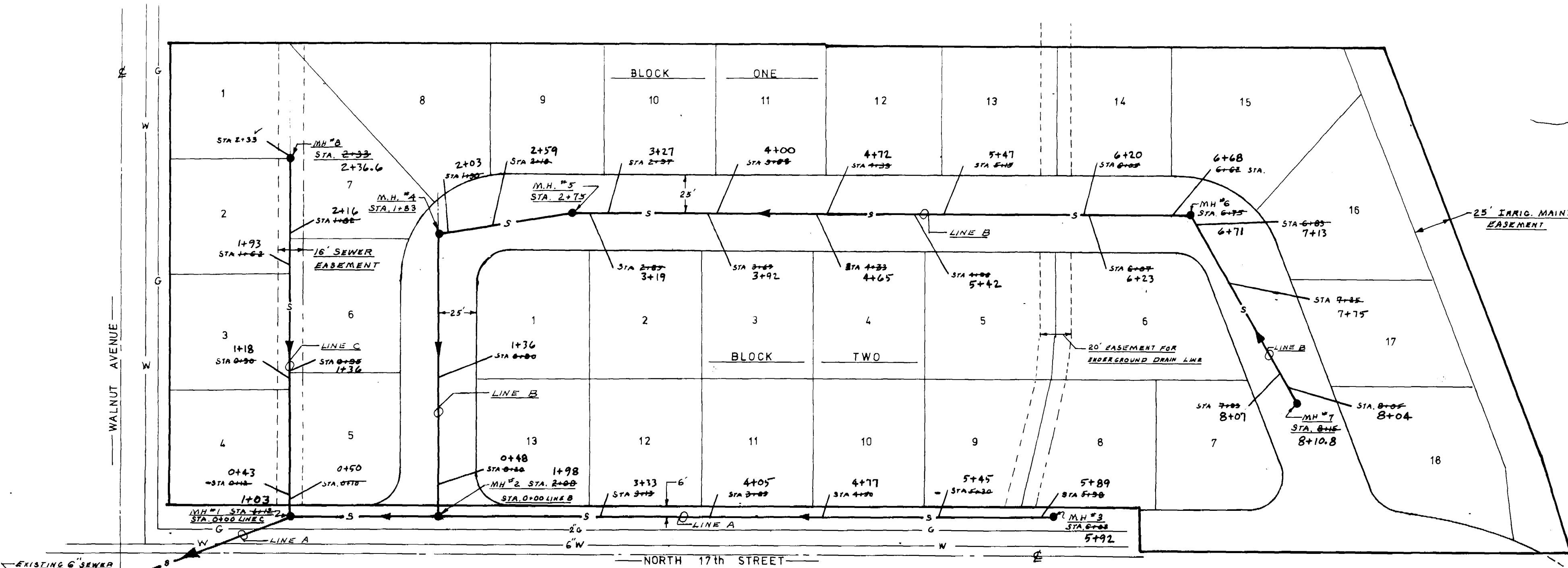


CITY OF GRAND JUNCTION *[Signature]*
 GRAND JUNCTION PLANNING
 MESA COUNTY HEALTH DEPT. *[Signature]*
 COUNCIL OF GOVERNMENTS
 GREENTREE, INC. (OWNER) *[Signature]* 1/14/78



- NOTES:
1. ENTER EXISTING MH. ABOVE THE BASE
 2. INVERTS ON STRAIGHT-THRU MANHOLE FORMED BY RUNNING PIPE THRU MH. BASE AT PREVAILING SLOPE - CUT TOP OF PIPE TO BASE CONTOUR.
 3. CARRY LATERALS A MINIMUM OF 5' INSIDE LOT LINES

AS - BUILDING

FINAL RIM ELEVATIONS & MANHOLE TIES TO BE REVISED AFTER STREET PAVING COMPLETE. RAB

PIPE SPECIFICATIONS:
 PVC ASTM D3034 SDR35
 TRUSS ASTM D2680
 ABS ASTM D2751 SDR35 (LATERALS ONLY)



GREENWOOD ESTATES		
SANITARY SEWER SYSTEM		
GREENTREE, INC.		PLAN & PROFILE
SURVEYED BY:		HORIZONTAL SCALE 1" = 50'
ENGINEERING BY:		VERTICAL SCALE 1" = 5'
R.S. COBURN P.E. 7444		DATE 4-26-1978
FILE NO 77-06-08		SHEET 1 OF 2

SHEET 2 - DWG No. *[Number]* STD S-25-76 "STANDARD SANITARY SEWER DETAILS" CITY OF GRAND JUNCTION ENGINEERING DIVISION

INVESTIGATION DOES NOT EXCEED 200' FROM

