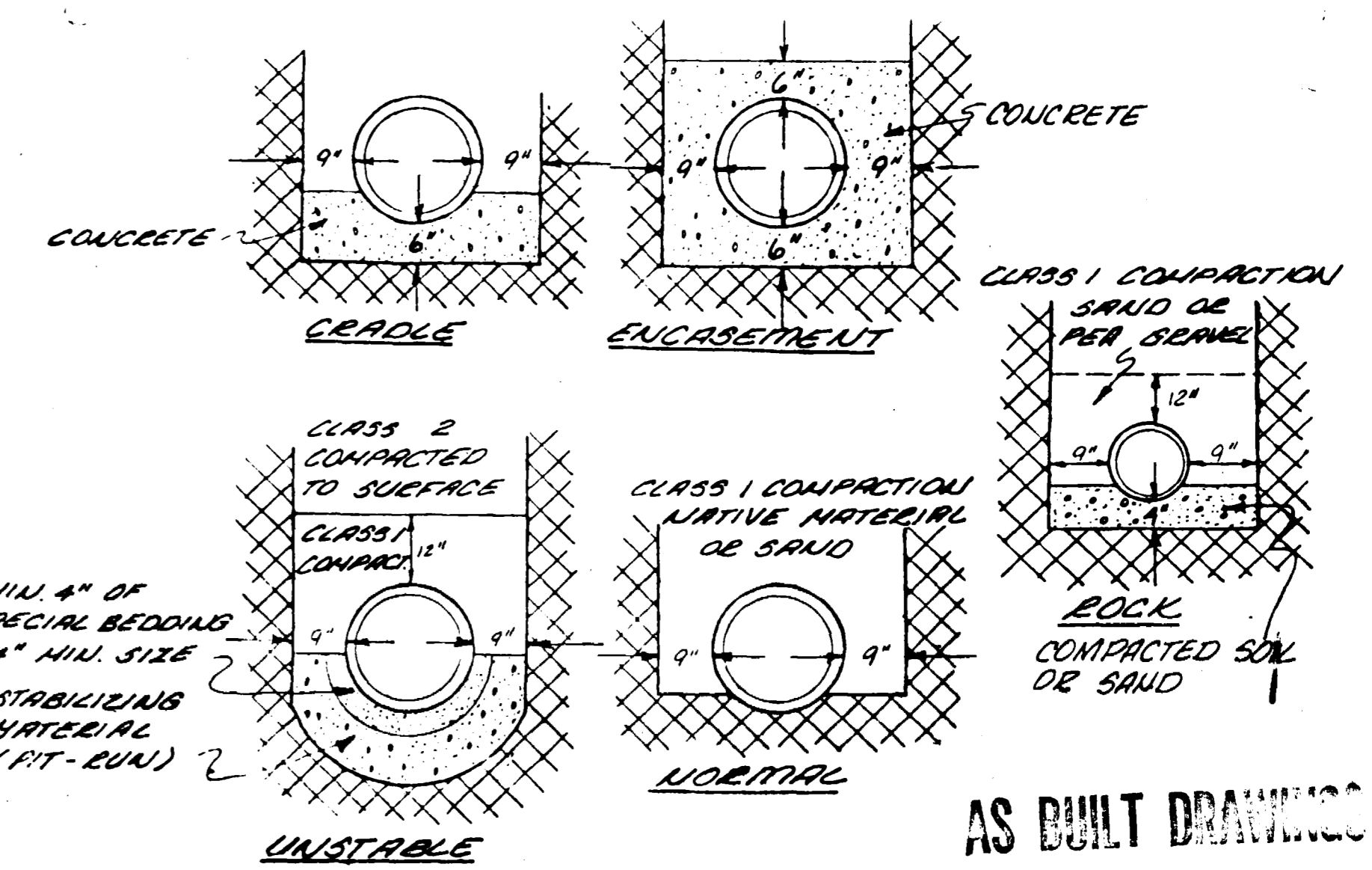
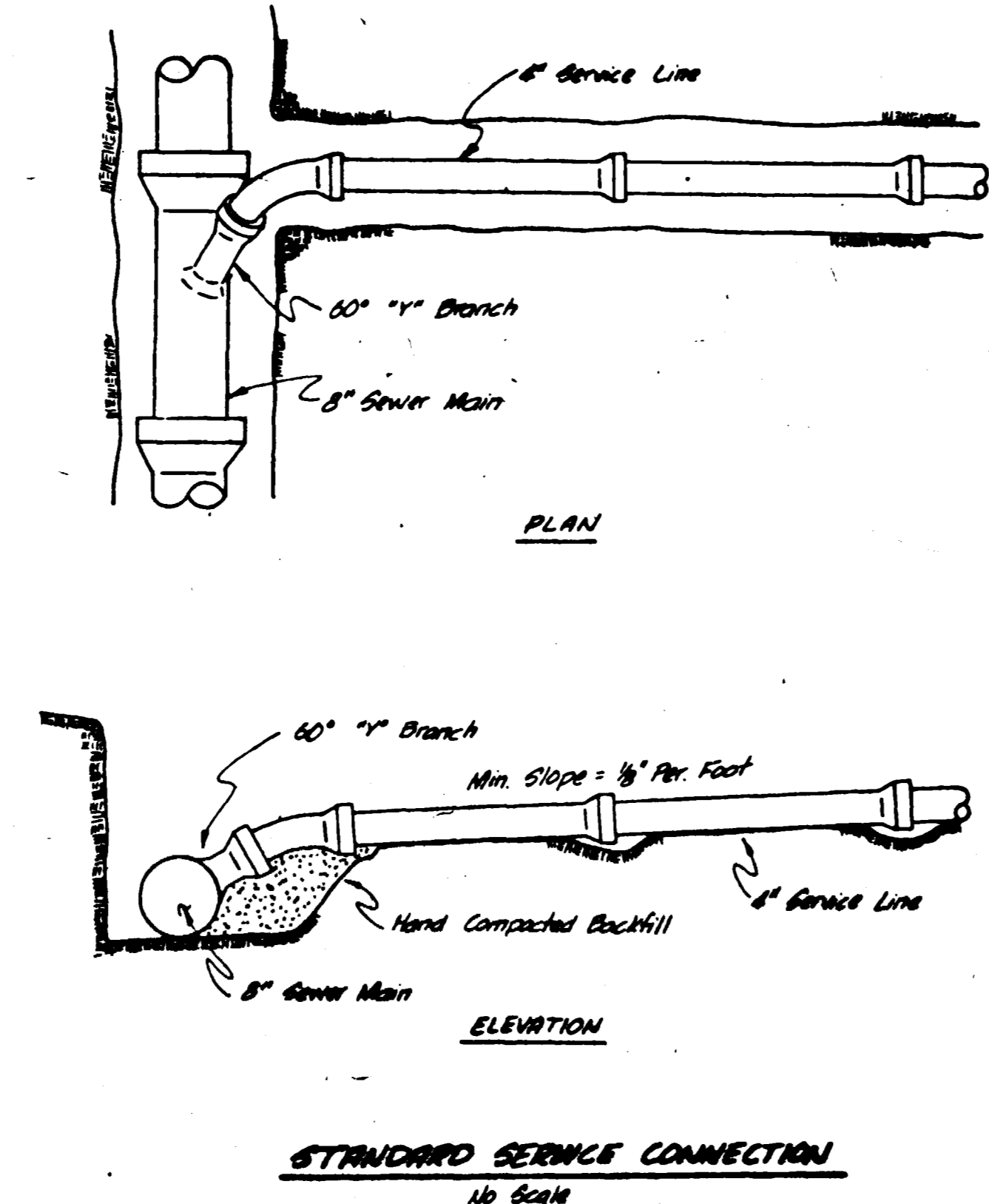
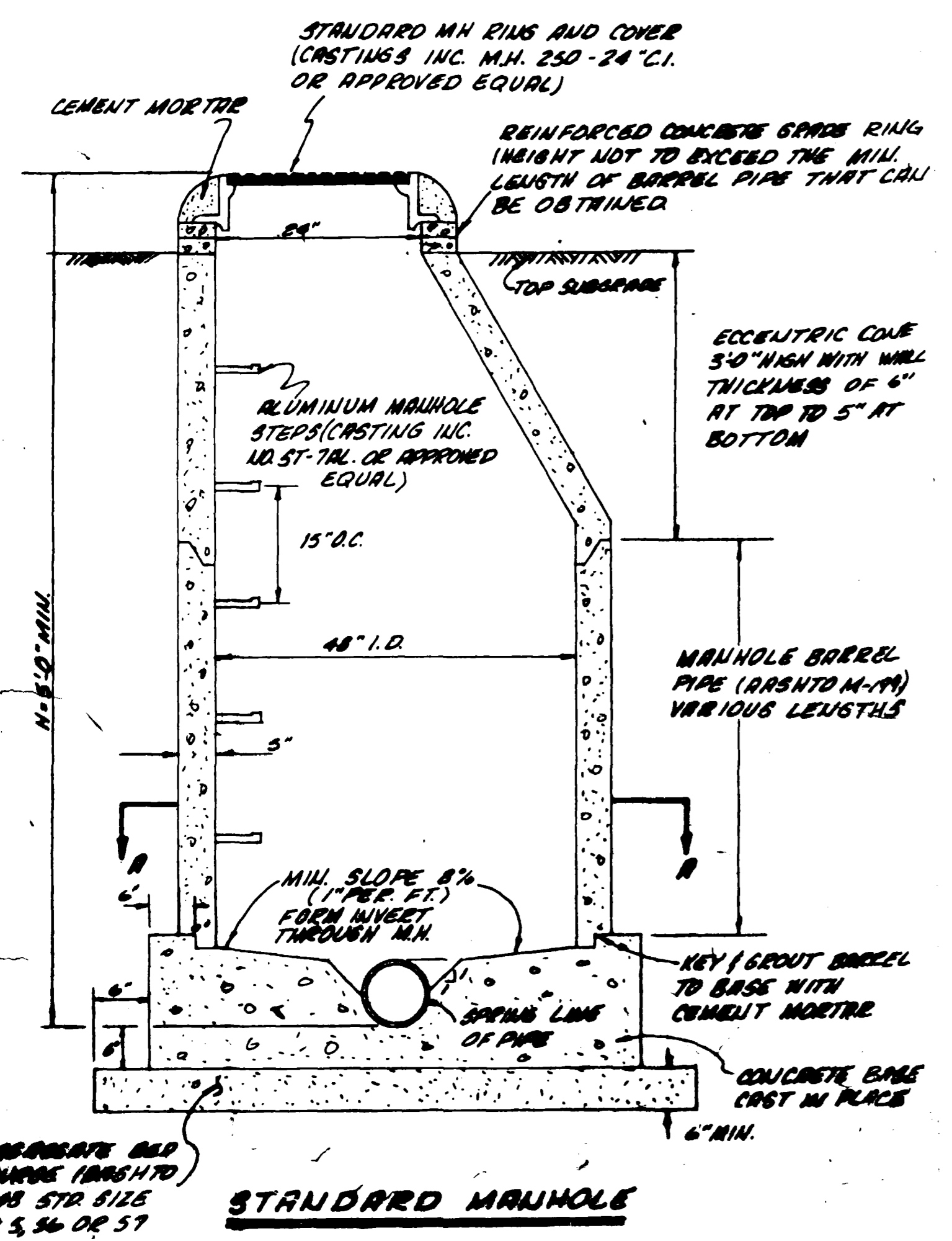


- QUANTITIES**
- SANITARY SEWER
 - 1388 LF 8" SANITARY SEWER
 - 7 STANDARD MANHOLES
 - 18 4" SERVICE CONNECTIONS
 - DOMESTIC WATER
 - 1320 LF 8" WATER MAIN
 - 1 8" GATE VALVES
 - 1 FIRE HYDRANT W/ GATE VALVE
 - 18 SERVICE CONNECTIONS
 - 1 GLUED 8" CAP

- NOTES**
- ALL SEWER CONSTRUCTION TO BE DONE IN ACCORDANCE WITH THE CITY OF GRAND JUNCTION SPECIFICATIONS.
 - ALL ECCENTRIC CONES TO BE SET AT TOP OF SUBGRADE (STREET CONTRACTOR TO SET RIMS TO FINISH GRADE)
 - SEWER SERVICE LINES ARE INTENDED TO BE LOCATED 5' DOWNSTREAM FROM CENTER OF LOTS AND SHALL EXTEND 10' BEYOND PROPERTY LINE.
 - ALL WATER LINE CONSTRUCTION TO BE DONE IN ACCORDANCE WITH LITE WATER SPECIFICATIONS.
 - SEWER AND WATER SERVICES TO BE A MINIMUM OF A 10' SEPARATION.



ACCEPTED _____ DATE _____
 NORTH 26 1/2 ROAD SEWER ASSOC.

ACCEPTED _____ DATE _____
 GRAND JUNCTION CITY ENGINEERING

ACCEPTED _____ DATE _____
 LITE WATER CONSERVANCY DISTRICT

DATE
FEB 1979
SCALE
AS SHOWN

REVISIONS

PARAGON ENGINEERING, INC.
P.O. Box 2872
Grand Junction, Colorado 81501 (303) 243-3968

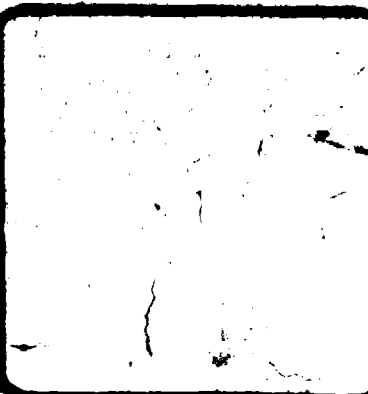
WILLIAM E. BENTLEY
REGISTERED
STATE OF COLORADO

PEACH HILL SUBDIVISION
MESA COUNTY, COLORADO
DOMESTIC WATER & SANITARY SEWER PLAN

SHEET
1
OF 3 SHEETS

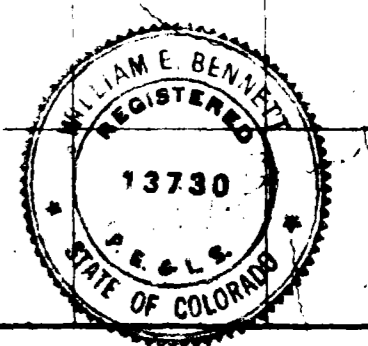
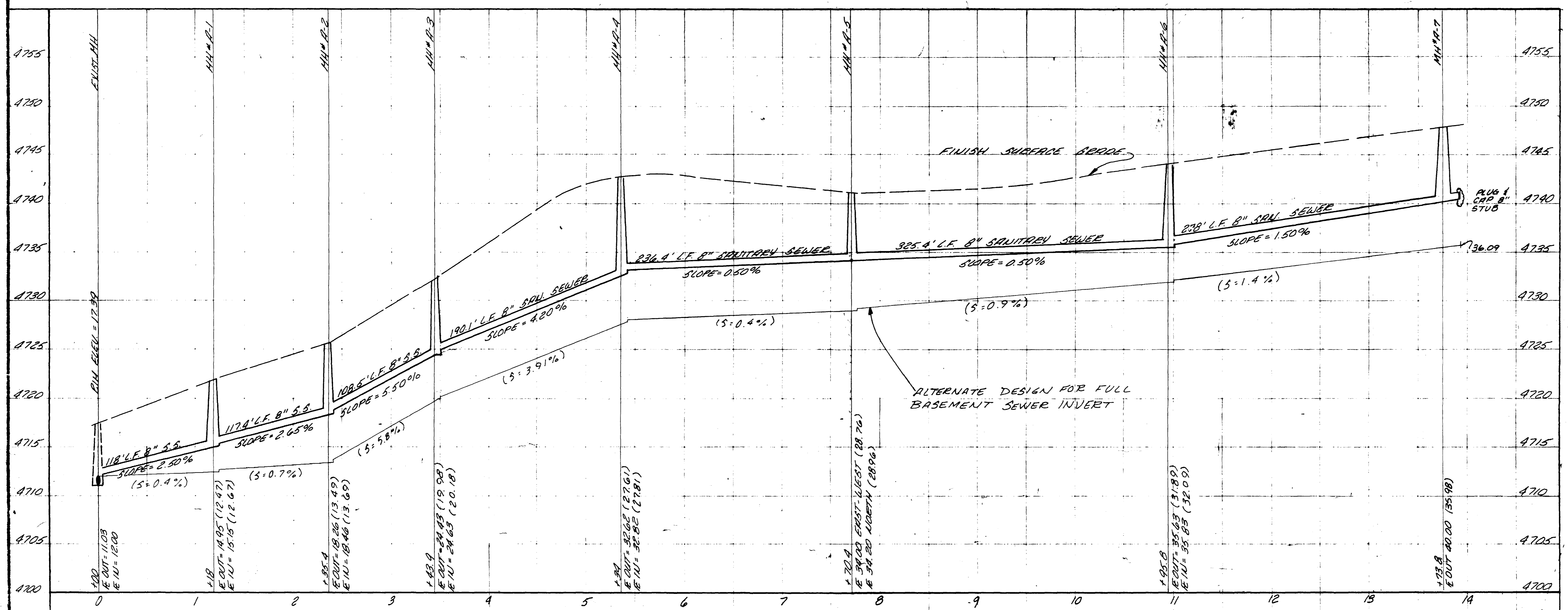
CHECKED
DATE
DEC. 1978
SCALE
1" = 5' HORZ.
1" = 30' VERT.
REVISIONS
BY
RELOCATE MH #7
EB

PARAGON ENGINEERING, INC.
 P.O. BOX 472
 GRAND JUNCTION, COLORADO 81501 (970) 241-8800



PEACH HILL SUBDIVISION
 MESA COUNTY, COLORADO
 SANITARY SEWER PROFILES

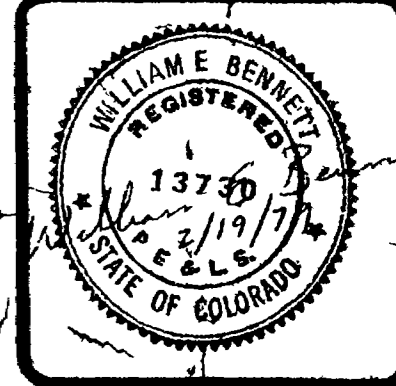
SHEET
2
OF 13 SHEETS



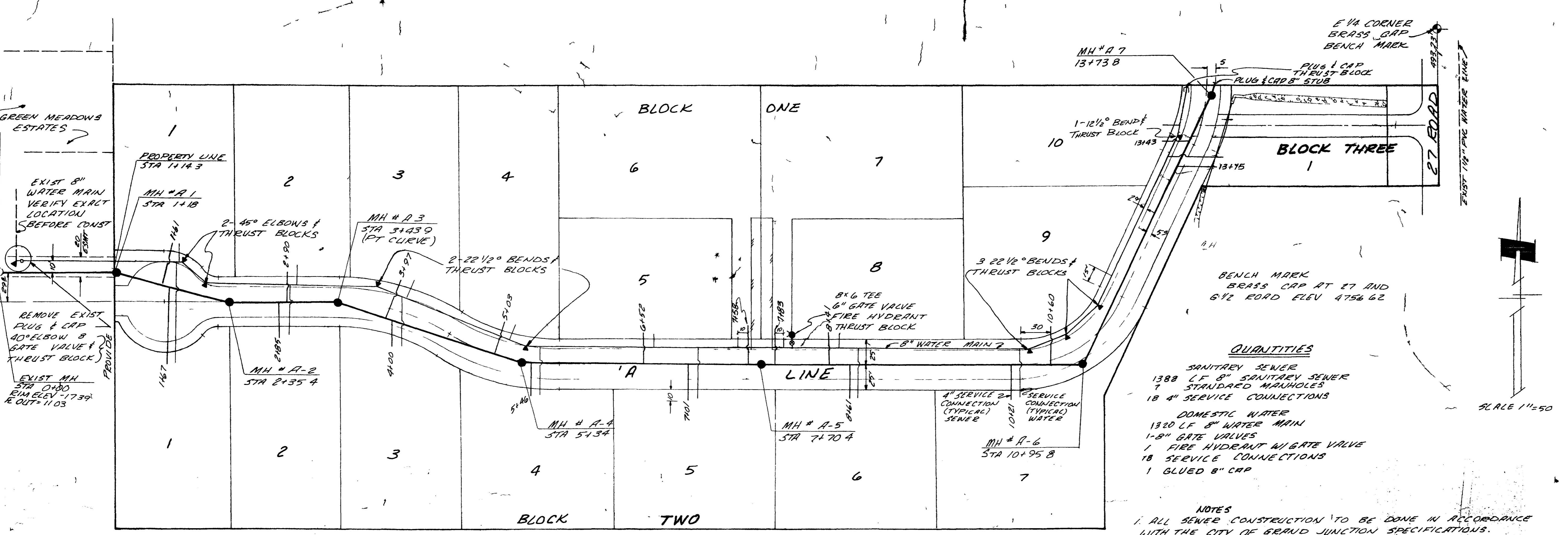
AS BUILT DRAWING

REVISIONS	BY
LOCATE MH # 7	ES

PARAGON ENGINEERING, INC.
Grand Junction, Colorado 81504
P.O. Box 2822
(303) 245-8996

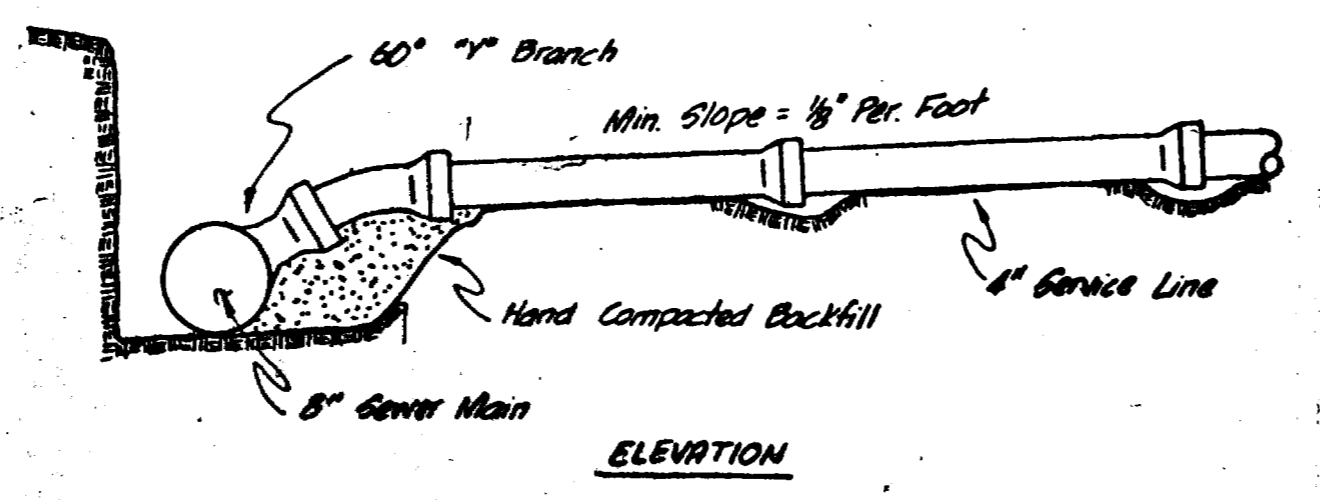
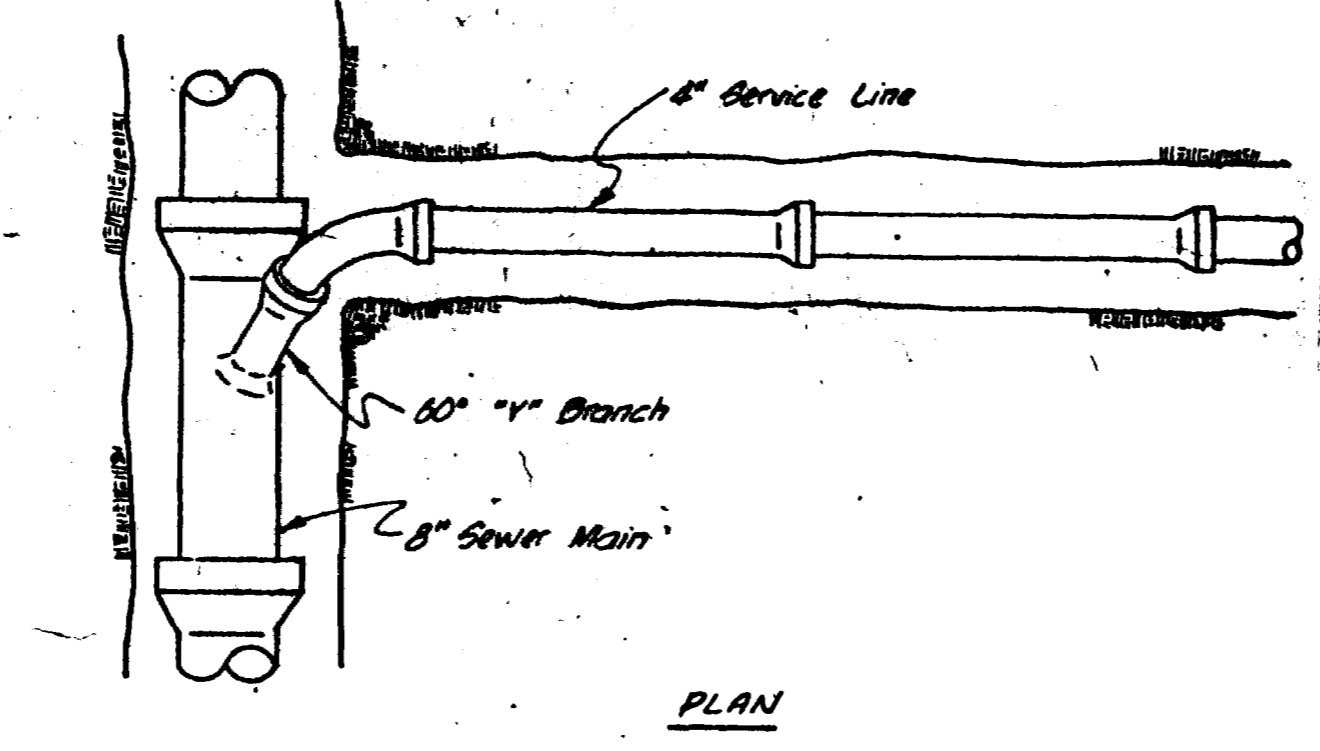
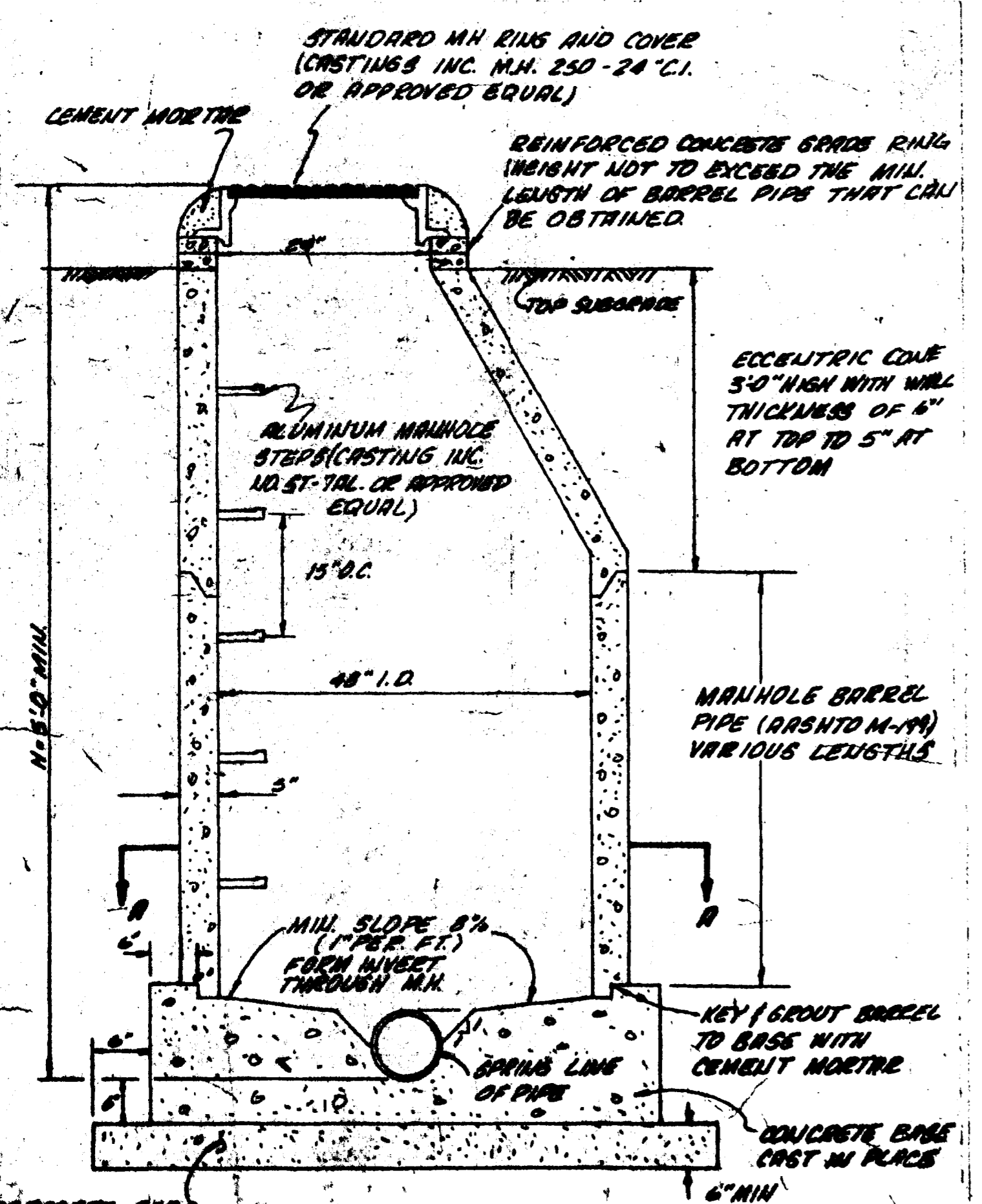


PEACH HILL SUBDIVISION
MESA COUNTY, COLORADO
DOMESTIC WATER & SANITARY SEWER PLAN

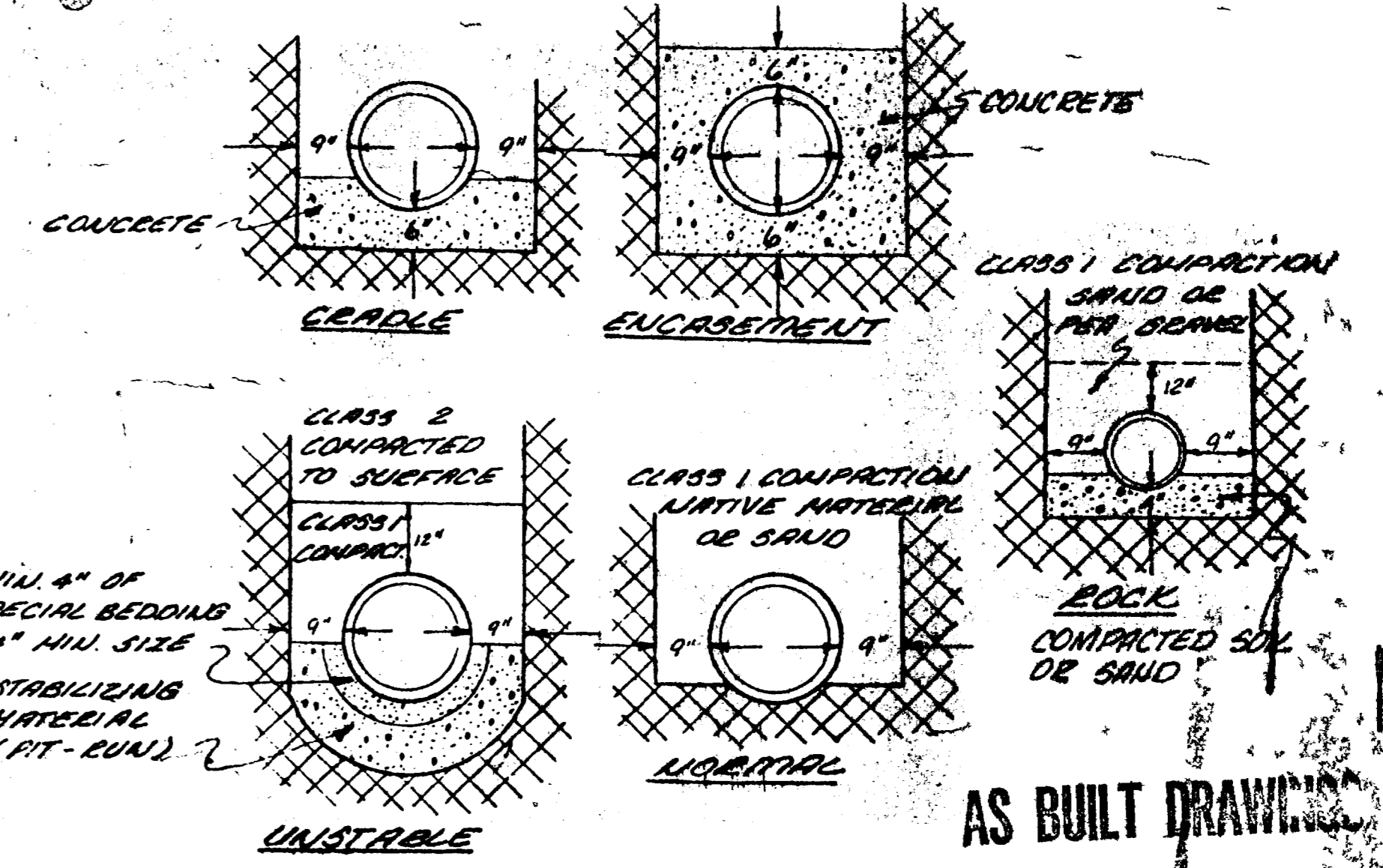


- QUANTITIES**
- SANITARY SEWER
 - 1388 LF 8" SANITARY SEWER
 - 7 STANDARD MANHOLES
 - 18 4" SERVICE CONNECTIONS
 - DOMESTIC WATER
 - 1320 LF 8" WATER MAIN
 - 1-8" GATE VALVES
 - 1 FIRE HYDRANT W/ GATE VALVE
 - 18 SERVICE CONNECTIONS
 - 1 GLUED 8" CAP

- NOTES**
- ALL SEWER CONSTRUCTION TO BE DONE IN ACCORDANCE WITH THE CITY OF GRAND JUNCTION SPECIFICATIONS.
 - TOP OF ECCENTRIC CONES TO BE SET AT TOP OF SUBGRADE (STREET CONTRACTOR TO SET RIMS TO FINISH GRADE)
 - SEWER SERVICE LINES ARE INTENDED TO BE LOCATED 5' DOWNSTREAM FROM CENTER OF LOTS AND SHALL EXTEND 10' BEYOND PROPERTY LINE.
 - ALL WATER LINE CONSTRUCTION TO BE DONE IN ACCORDANCE WITH UTE WATER SPECIFICATIONS.
 - SEWER AND WATER SERVICES TO BE A MINIMUM OF A 10' SEPARATION.



STANDARD SERVICE CONNECTION
1/8" Scale

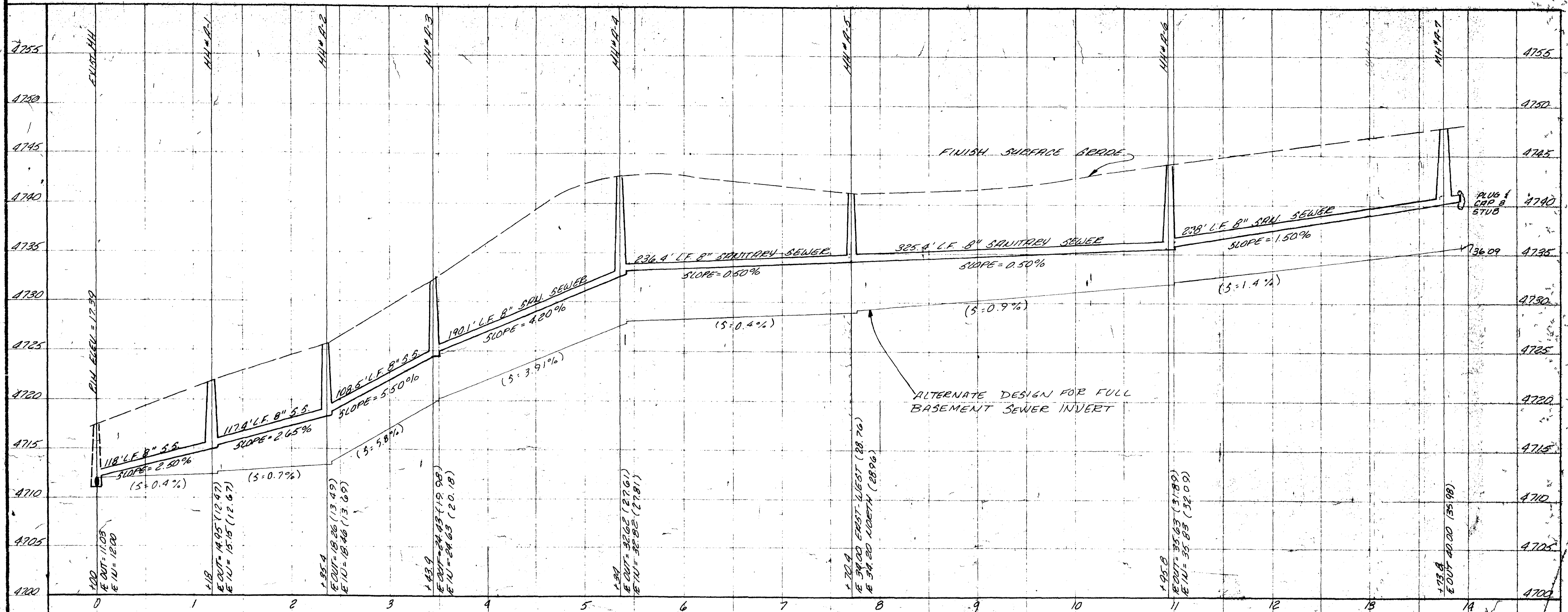


TYPICAL BEDDING DETAIL
NOT TO SCALE

ACCEPTED _____ DATE _____
NORTH 26 1/2 ROAD SEWER ASSOC
ACCEPTED _____ DATE _____
GRAND JUNCTION CITY ENGINEERING
ACCEPTED _____ DATE _____
UTE WATER CONSERVANCY DISTRICT

NOTE: This is to certify that the system infiltration does not exceed 200 gallons per inch diameter per mile of length per day.

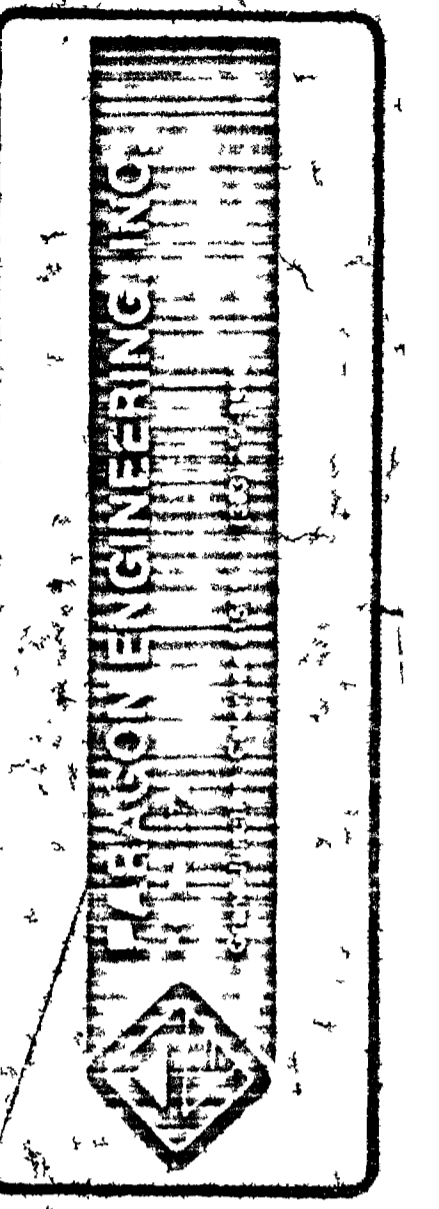
02-243-04 AB



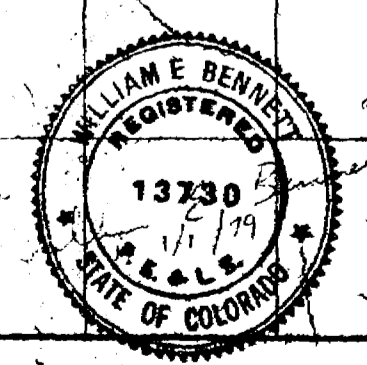
"A" LINE

CHECKED
DATE
DEC 1978
SCALE
1" = 50' HORIZ
1" = 5' VERT

REVISIONS	BY
Relocate MH#1	EB



PEACH HILLS SUBDIVISION
 MESA COUNTY, COLORADO
 SANITARY SEWER PROFILES

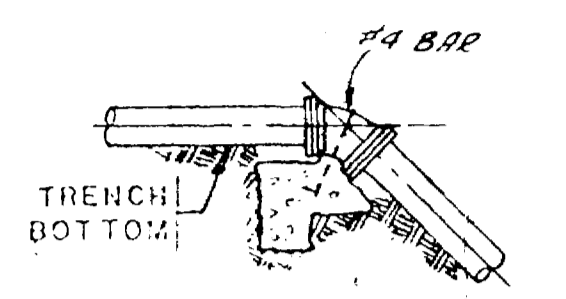


AS BUILT DRAWING

SHEET
2
OF 43 SHEETS

TABLE OF BEARING AREAS IN SQ. FT. FOR CONCRETE THRUST BLOCKING

SIZE	BENDS				TEES	GATE VALVES	DEAD ENDS		
	90°	45°	22 1/2°	11 1/4°					
3	1.0	0.8	0.3	0	0.7	0.5	0.7		
4	1.8	1.0	0.5	0	1.3	0.5	1.3		
6	4.0	2.2	1.1	0	2.8	0.7	2.8		
8	7.1	3.8	2.0	1.0	5.0	2.4	5.0		
10	11.1	6.0	3.0	1.5	7.8	4.5	7.8		
12	16.0	8.6	4.4	2.2	11.3	7.3	11.3		

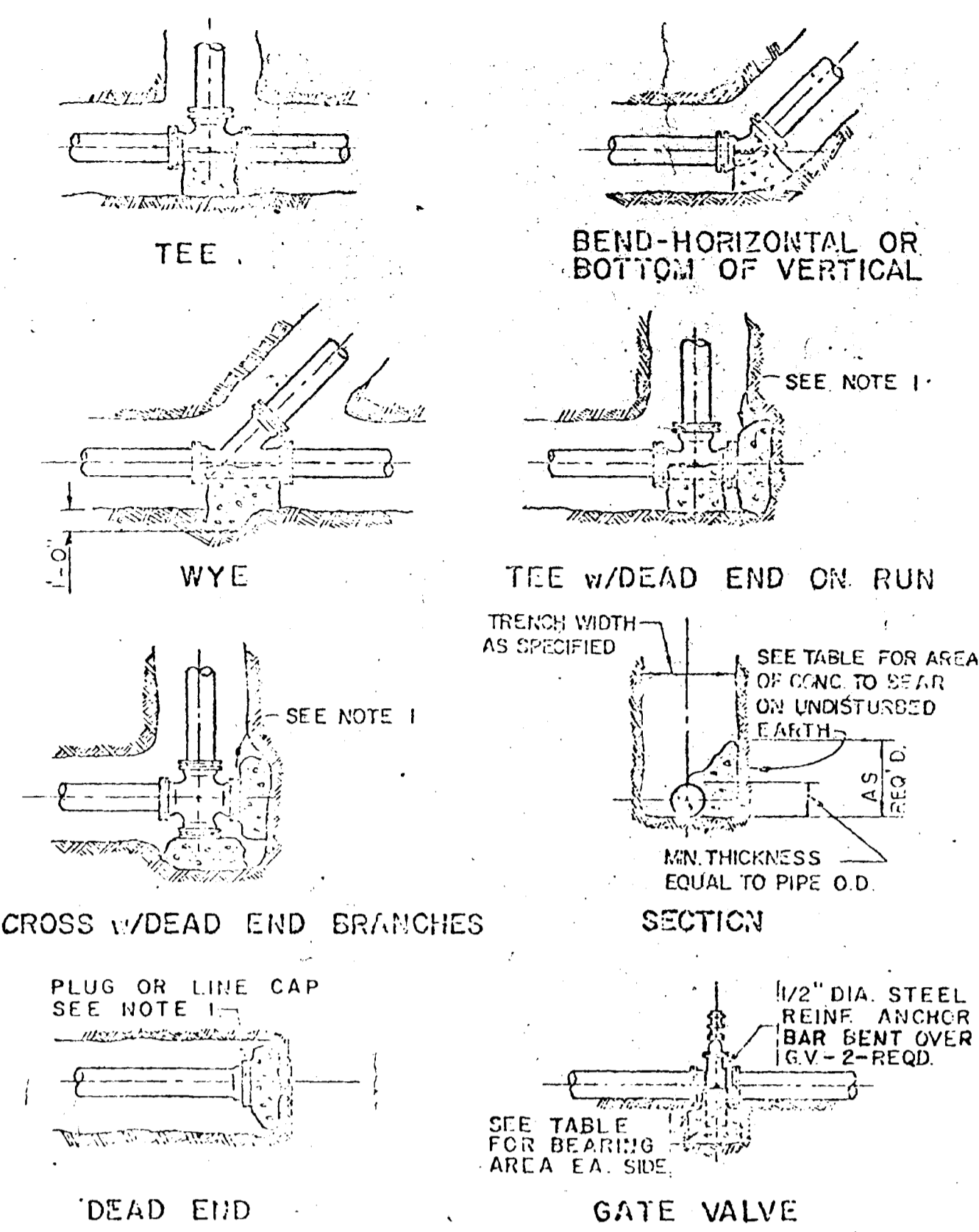


TOP OF VERT. BEND

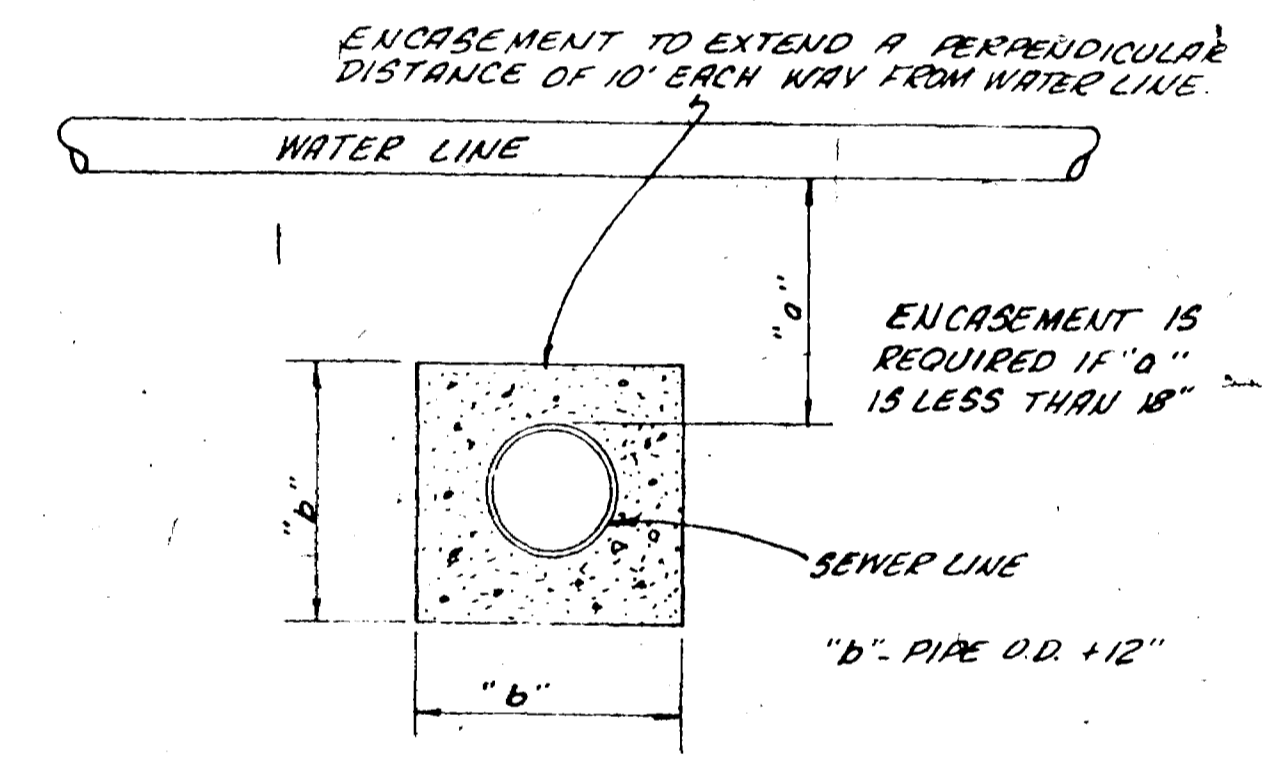
TABLE OF VOLUMES OF CONCRETE (IN CU. FT.)

SIZE	BEND		
	45°	22 1/2°	11 1/4°
3	7.4	3.8	1.8
4	13.0	6.6	2.9
6	29.2	15.0	7.4
8	52.0	26.4	13.2
10	81.0	41.4	20.6
12	117.0	60.0	29.6

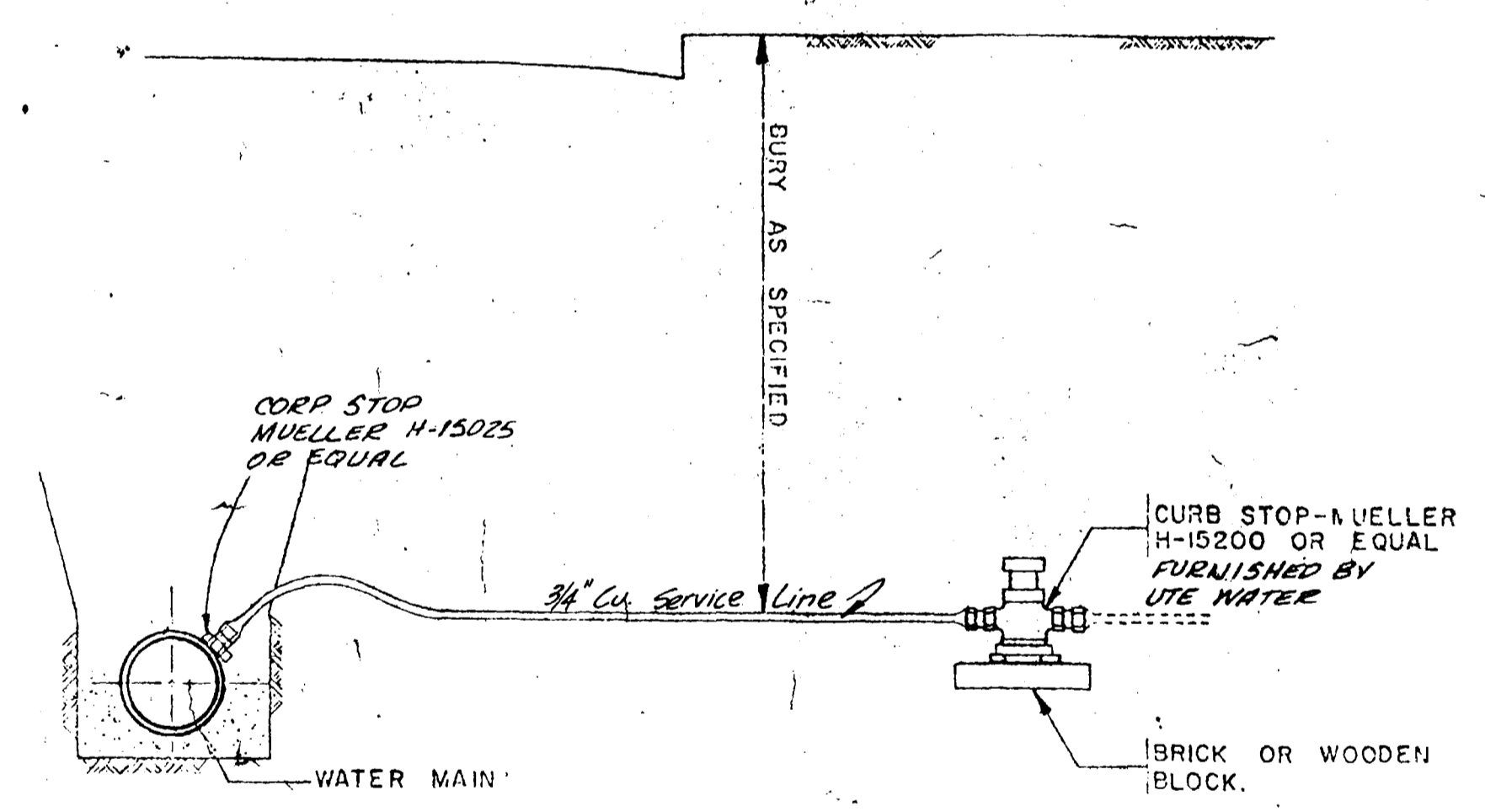
- NOTES FOR DRAWINGS**
- AT DEAD ENDS, WRAP FITTINGS WITH TAR PAPER, FELT, OR HEAVY KRAFT PAPER TO PROVIDE BOND BREAK BETWEEN CONCRETE AND FITTING.
 - ALL THRUST BLOCKING SHALL BE CAST-IN-PLACE CONCRETE HAVING A MINIMUM YIELD STRENGTH OF 2000 PSI.
 - THRUST BLOCKING SHALL BE CAST AGAINST UNDISTURBED EARTH. FORMS SHALL BE USED AS NECESSARY TO OBTAIN ADEQUATE BEARING AREA AND TO CONFINE THE CONCRETE. THRUST BLOCKING SHALL BE ON THE FITTING OR END CAP ONLY AND SHOULD NOT BE ALLOWED TO SPILL OVER THE JOINT OR AGAINST THE PIPE.



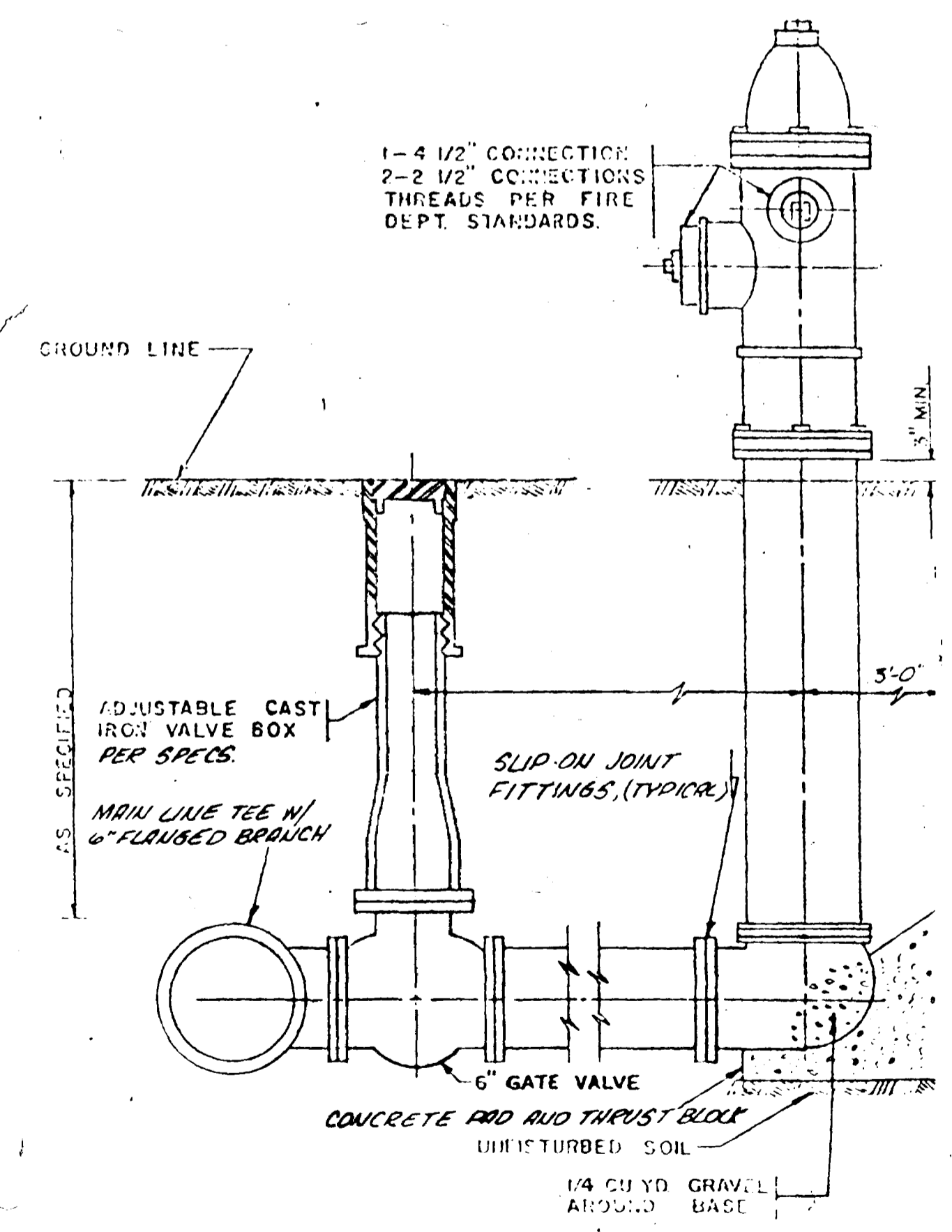
THRUST BLOCK DETAILS



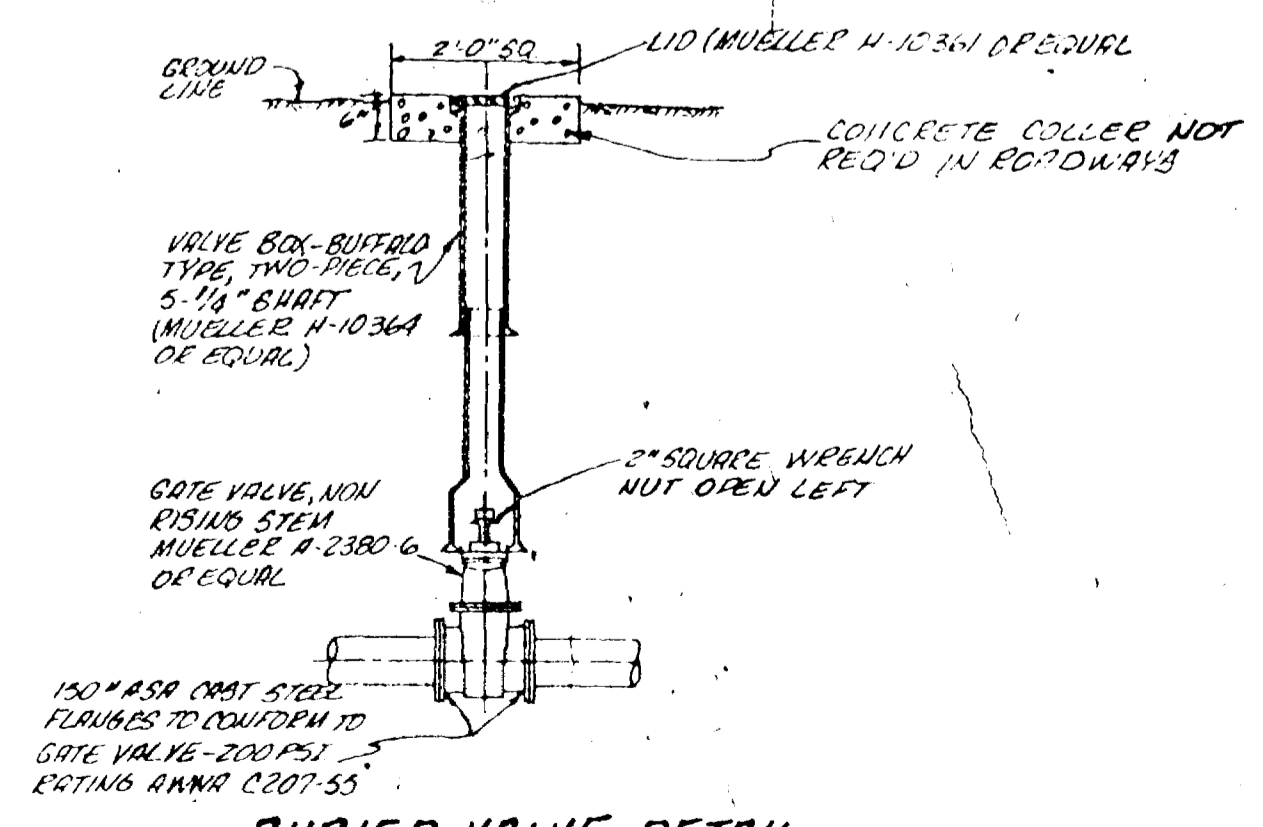
SEWER LINE ENCASEMENT DETAIL



TYPICAL SERVICE CONNECTION



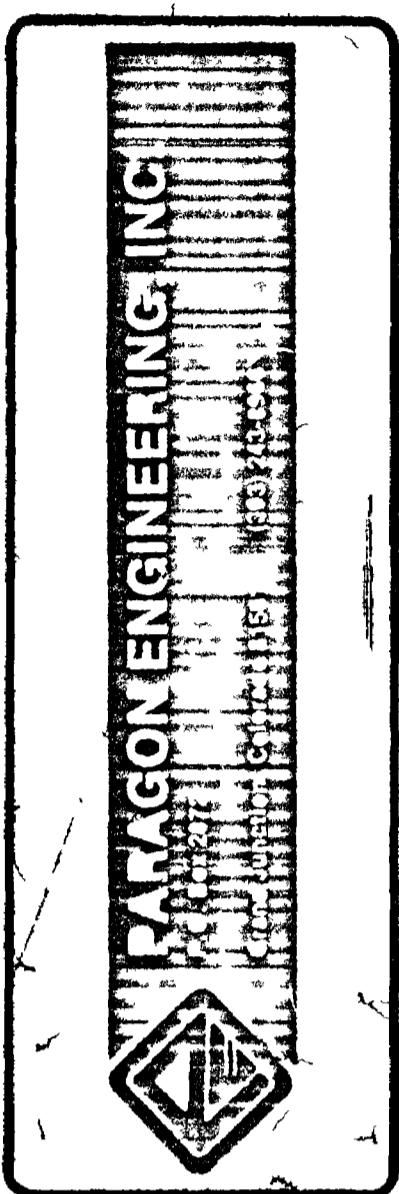
FIRE HYDRANT DETAIL



BURIED VALVE DETAIL

CHECKED
DATE
DEC. 1978
SCALE
As Shown

REVISIONS	BY



PEACH HILL SUBDIVISION
 MESA COUNTY, COLORADO
 DOMESTIC WATER DETAILS

AS BUILT DRAWINGS

SHEET
3
OF **3** SHEETS