

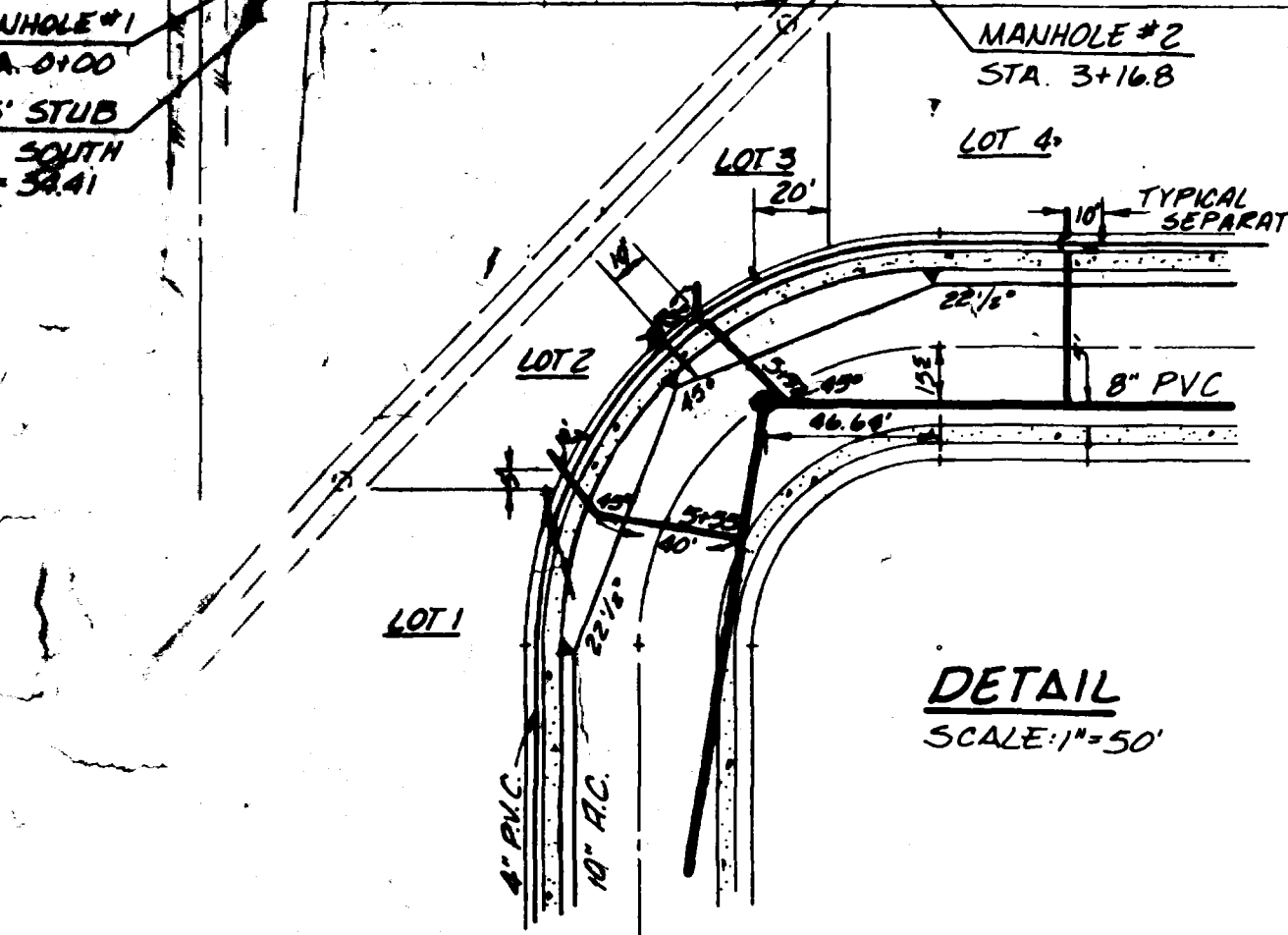
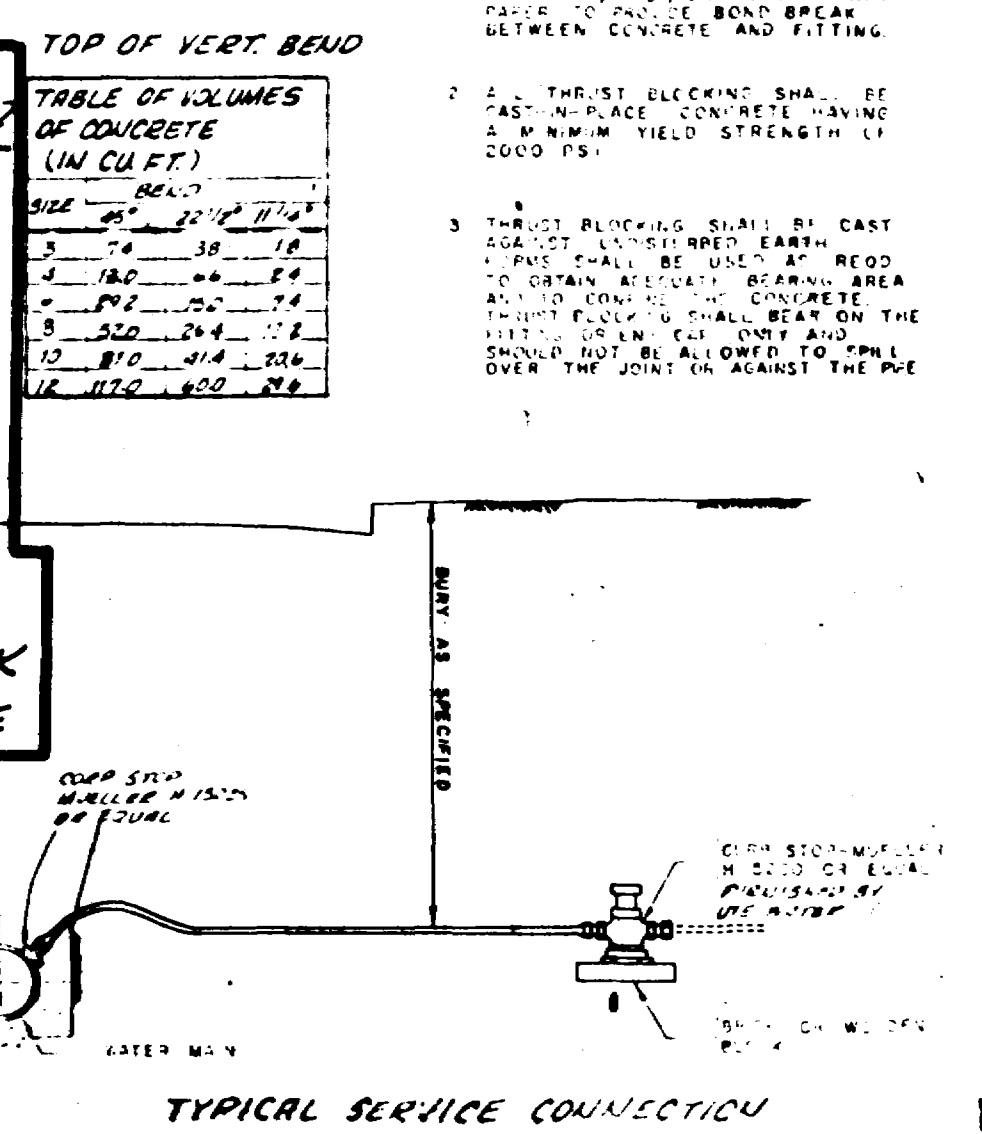
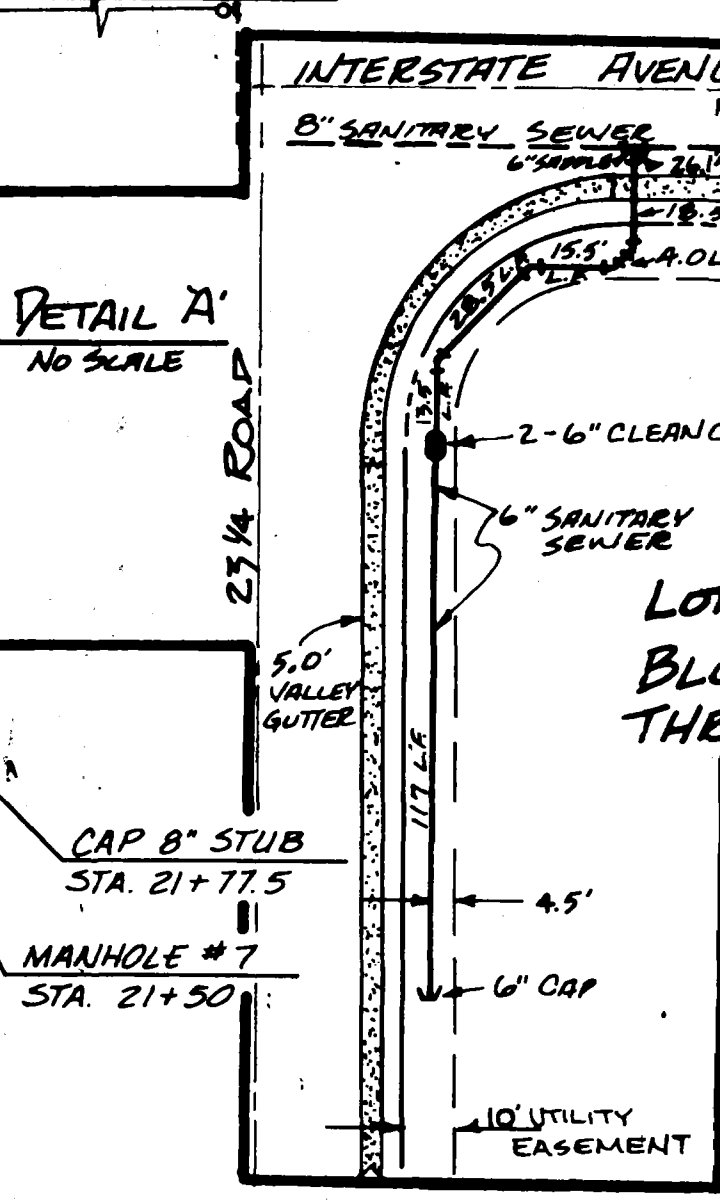
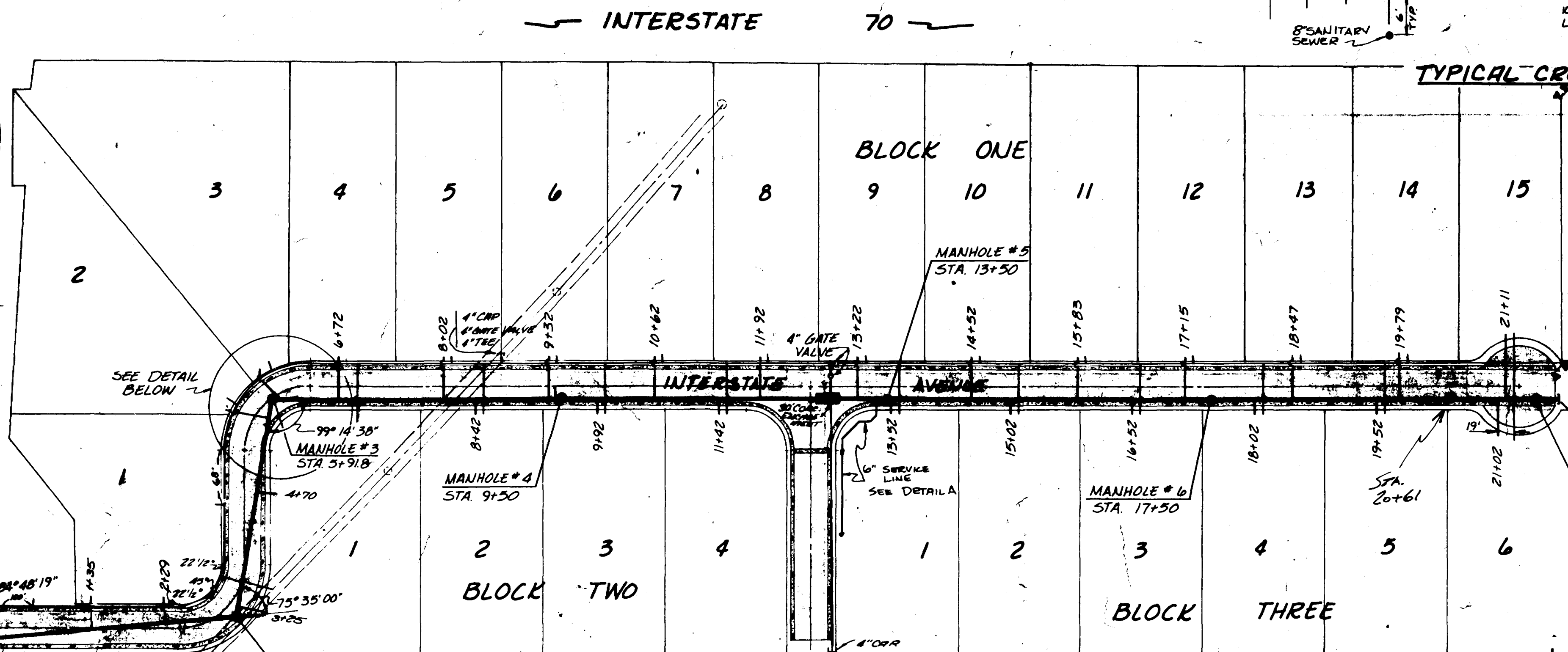
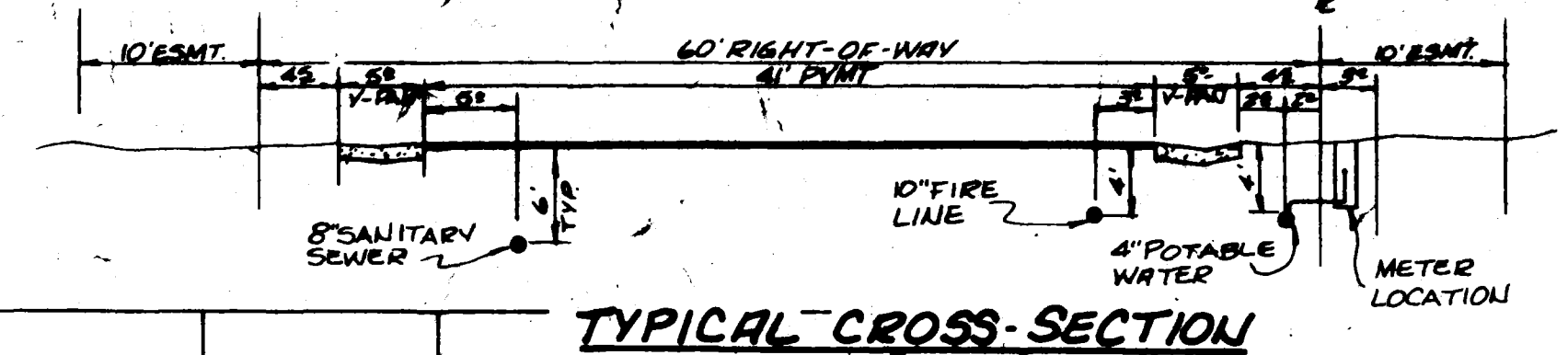
TABLE OF BENDING ITEMS IN 8" P.V.C. THRU-ROCK THRUST BLOCKING

SIZE	RAD	45°	22 1/2°	11 1/4°	TEES	GATE VALVE	DEAD END
3"	12"	0.4	0.3	0	0.7	0.5	0.7
4"	16"	0.5	0.3	0	1.3	0.8	1.3

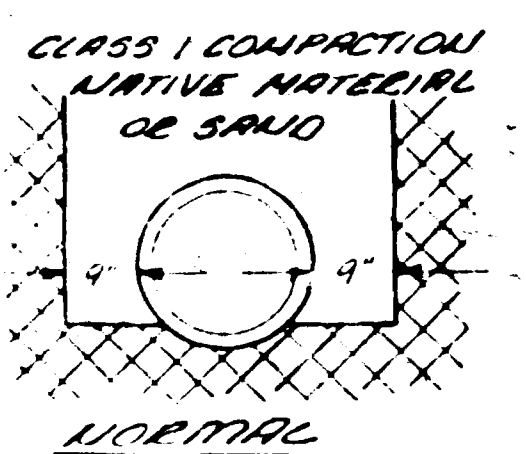
NOTES FOR DRAWINGS:
1. AT Joints END, WRAP FITTINGS WITH TARPAPER TAPE OR HEAVY WRAPT TAPE TO PREVENT BOND BREAK BETWEEN CONCRETE AND FITTING.
2. ALL THRU-ROCK BLOCKING SHALL BE CAST-IN-PLACE CONCRETE HAVING A MINIMUM YIELD STRENGTH OF 3000 P.S.I.
3. THRU-ROCK BLOCKING SHALL BE CAST AGAINST EXISTING REINFORCED CONCRETE. REINFORCING SHALL BE USED TO OBTAIN ADEQUATE REINFORCING AREA AND TO PREVENT CONCRETE FROM CRACKING. REINFORCING SHALL BE PLACED ON THE INSIDE OF THE BLOCKING AND SHALL BE ALLOWED TO OVERLAP THE JOINT ON AGAINST THE PIPE.

TABLE OF VOLUMES OF CONCRETE (IN CU. FT.)

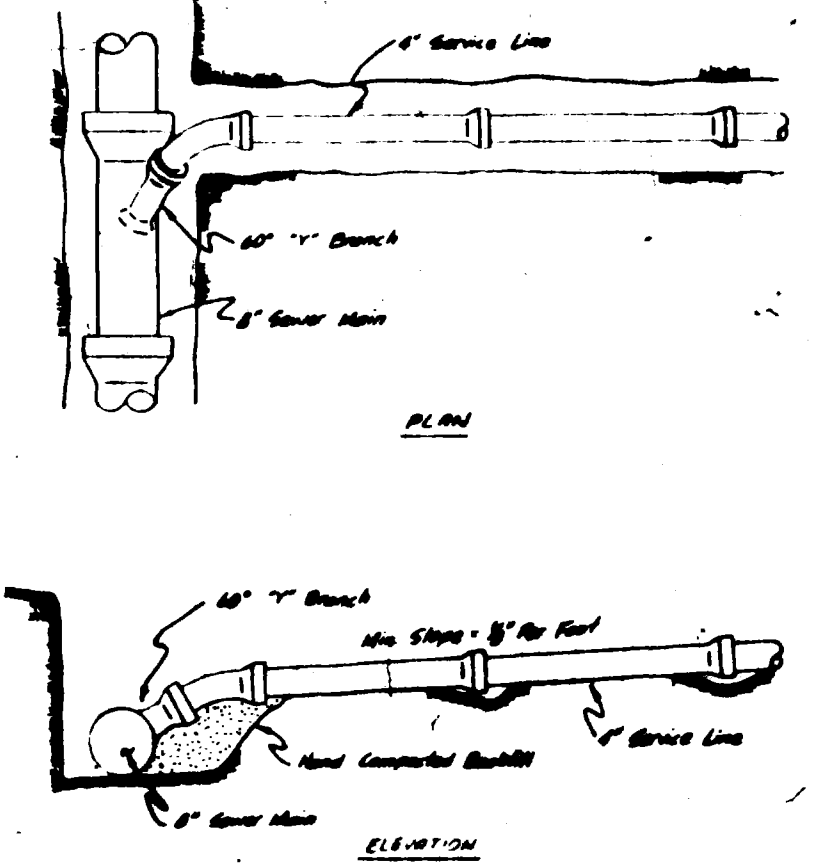
SIZE	90°	45°	22 1/2°	11 1/4°
3"	1.0	0.5	0.25	0.125
4"	1.75	0.875	0.4375	0.21875



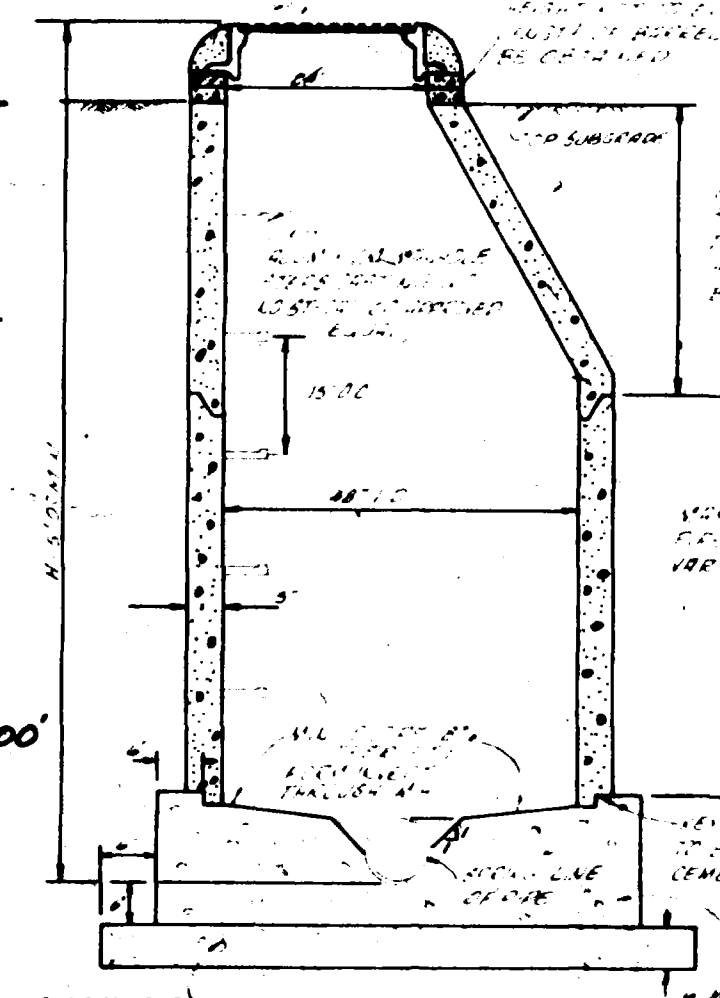
NOTE
4" WATER MAIN NOT A PART OF THIS CONTRACT.



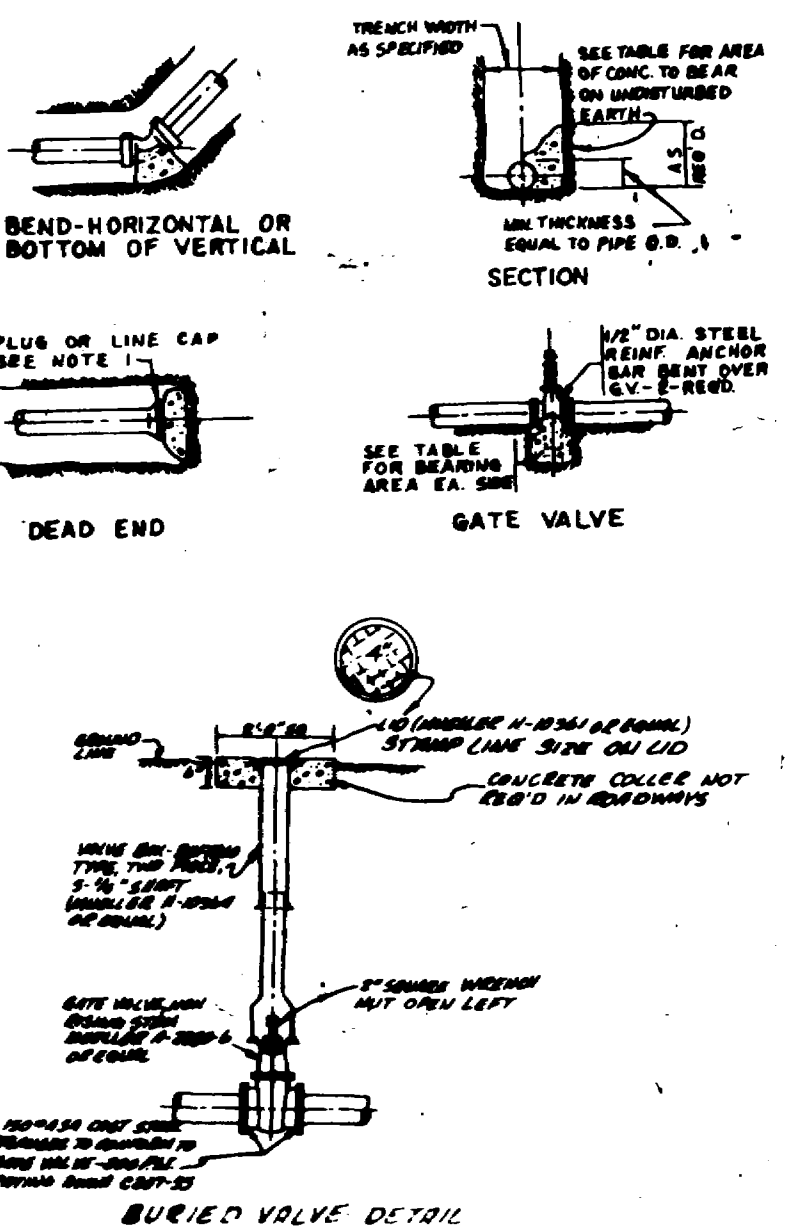
TYPICAL BEDDING DETAIL
N.T.S.
HAND DIG FOR BELL OR COUPLING



SCALE: 1"=100'



STANDARD MANHOLE



NOTE:
It is to certify that the system infiltration does not exceed 200 gallons per inch diameter per mile of length per day.

GENERAL NOTES

- TOP OF ECCENTRIC CONE TO BE SET AT TOP OF SUBGRADE-STREET CENTERLINE TO SET RIMS TO FINISH GRADE OF STREETS.
- SEWER SERVICES SHALL EXTEND 10' PAST ROW LINE.
- SEWER LATERALS SHALL BE LOCATED 5' DOWNSTREAM AND WATER SERVICES 5' UPSTREAM FROM THE CENTER OF THE LOT EXCEPT AS NOTED.
- A MINIMUM OF 10' SEPARATION SHALL BE MAINTAINED BETWEEN WATER AND SEWER MAINS & LATERALS.
- WATER MAINS SHALL BE CONSTRUCTED IN ACCORDANCE WITH UTE WATER SPECIFICATIONS.

AS BUILT DRAWINGS

QUANTITIES

- 2202.5 LF 8" SANITARY SEWER MAIN
- 17 STANDARD MANHOLES
- 27 SERVICE LATERALS
- 3215.5 LF 4" WATER MAIN (CLASS 200 PVC):
 - 4 2" GATE VALVES
 - 4 22 1/2° BENDS
 - 2 45° BENDS
 - 2 4" TEES
 - 27 SERVICE LATERALS (3/4")
 - 30 LF PAVEMENT REPLACEMENT

APPROVED DATE
UTE WATER CONSERVANCY DISTRICT

