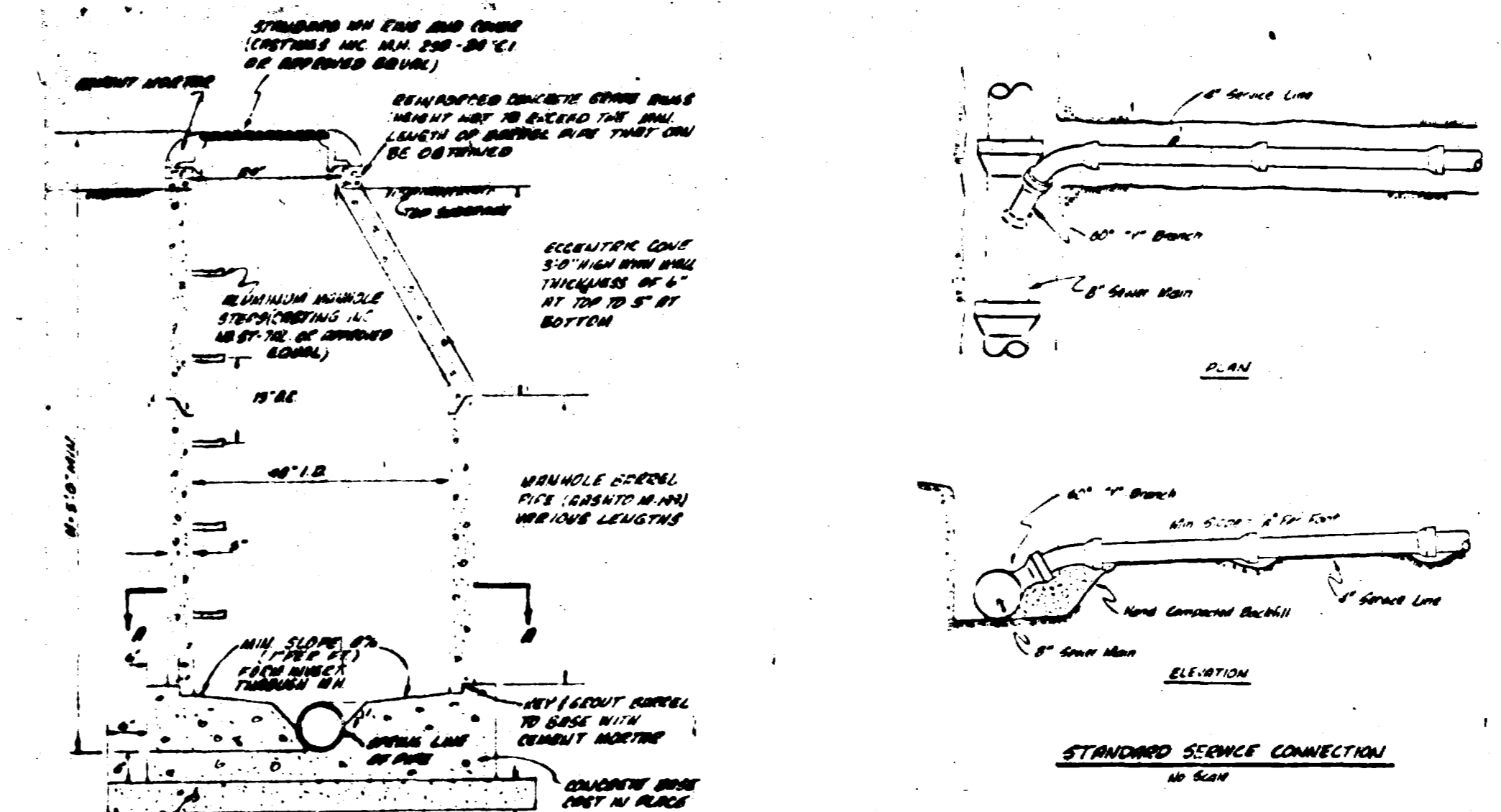
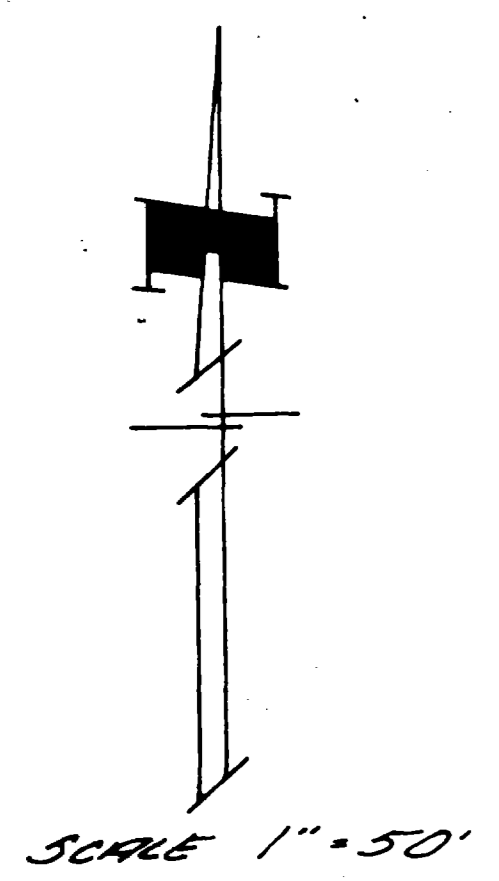
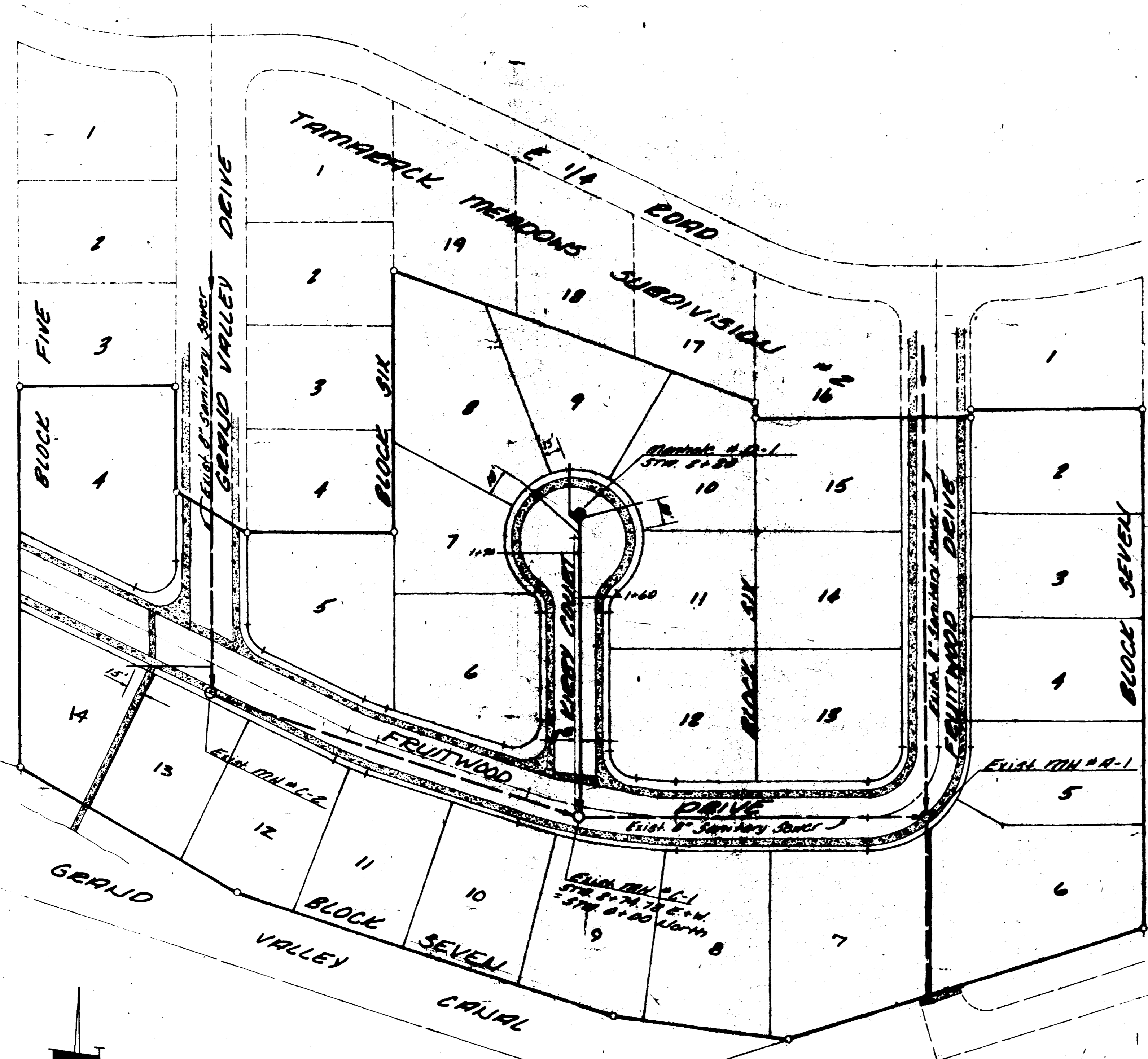


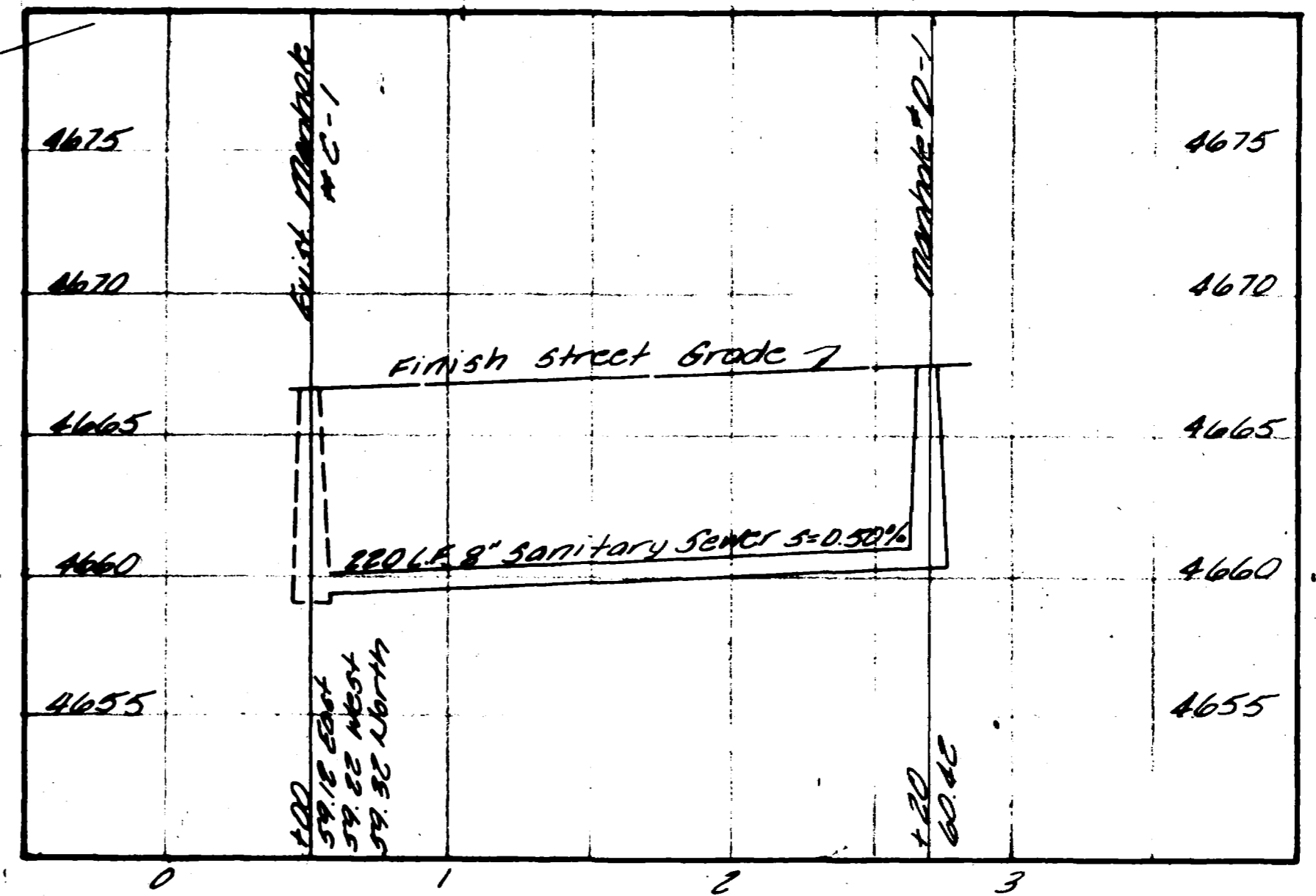
TAMMACK MEADOWS SUBDIVISION
FILING NO. THREE
AND A REPLAT OF LOT 4, BLOCK FIVE #2
MESA COUNTY, COLORADO
SANITARY SEWER PLAN, DETAILS, PROFILES



- GENERAL NOTES**
- 1) All construction to be done in accordance with Central Grand Valley specifications.
 - 2) Top of eccentric cone to be set at top of subgrade (street contractor to set manhole rim to finish grade.)
 - 3) All sewer services to extend a minimum of 10 feet beyond property line.
 - 4) Sewer and water services shall have a minimum 10 foot separation.

SEWER QUANTITIES
220 L.F. 8" Sanitary Sewer
1- Standard Manhole
6- Service Connections

NOTE:
This is to certify that the system infiltration does not exceed 200 gallons per inch diameter per mile of length per day.



Sanitary Sewer Profile, Kirby Court
Scale: 1" = 5' Vert., 1" = 50' Horiz.

Approved: _____ Date: _____
Central Grand Valley Sanitation Dist.