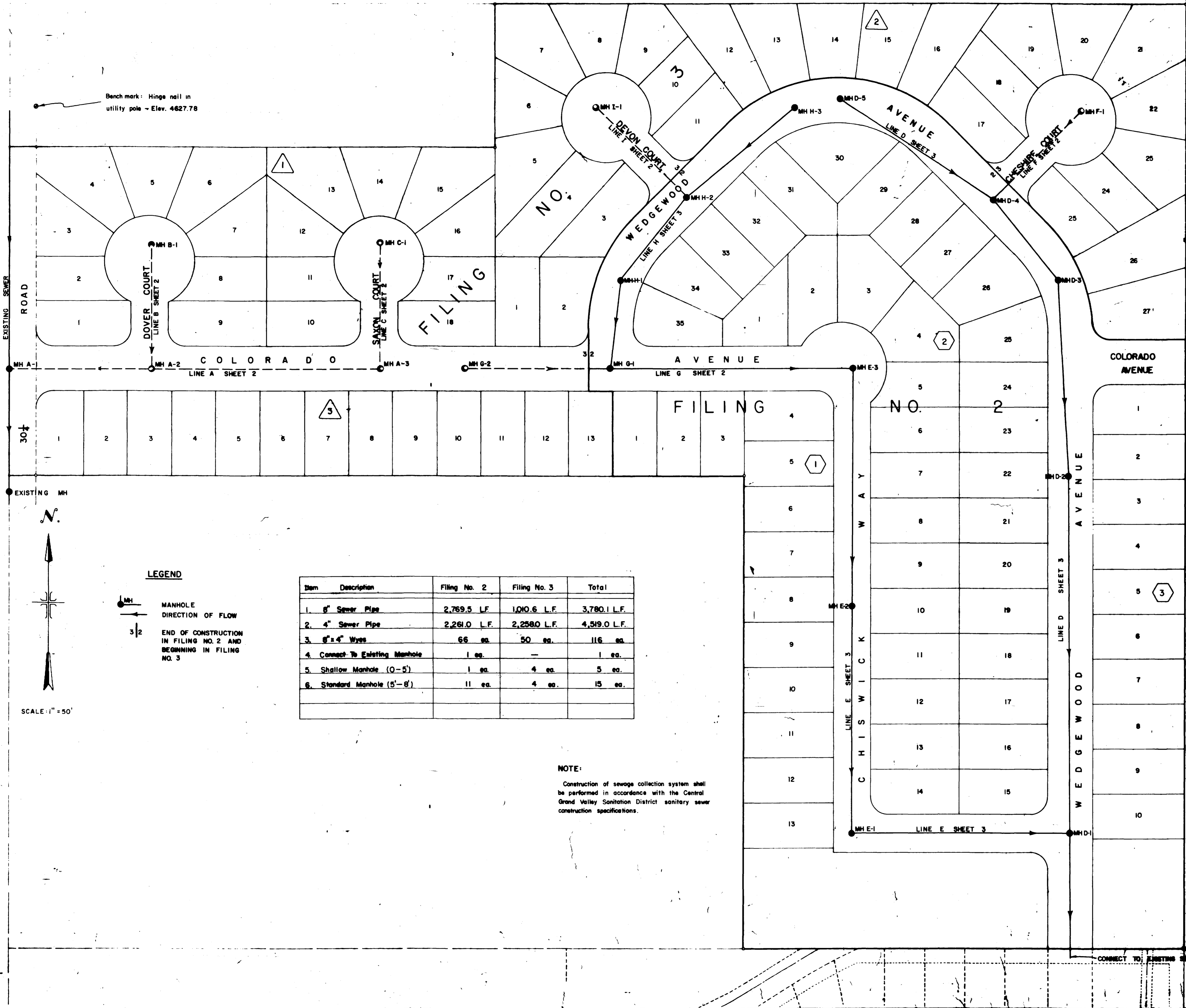


Bench mark: Hinge nail in utility pole - Elev. 4627.78



**LEGEND**

- MANHOLE DIRECTION OF FLOW
- END OF CONSTRUCTION IN FILING NO. 2 AND BEGINNING IN FILING NO. 3

Item	Description	Filing No. 2	Filing No. 3	Total
1.	6" Sewer Pipe	2,769.5 L.F.	1,000.6 L.F.	3,780.1 L.F.
2.	4" Sewer Pipe	2,261.0 L.F.	2,258.0 L.F.	4,519.0 L.F.
3.	6" x 4" Wyes	66 ea.	50 ea.	116 ea.
4.	Connect To Existing Manhole	1 ea.	—	1 ea.
5.	Shallow Manhole (0-5')	1 ea.	4 ea.	5 ea.
6.	Standard Manhole (5'-8')	11 ea.	4 ea.	15 ea.

**NOTE:**  
Construction of sewage collection system shall be performed in accordance with the Central Grand Valley Sanitation District sanitary sewer construction specifications.

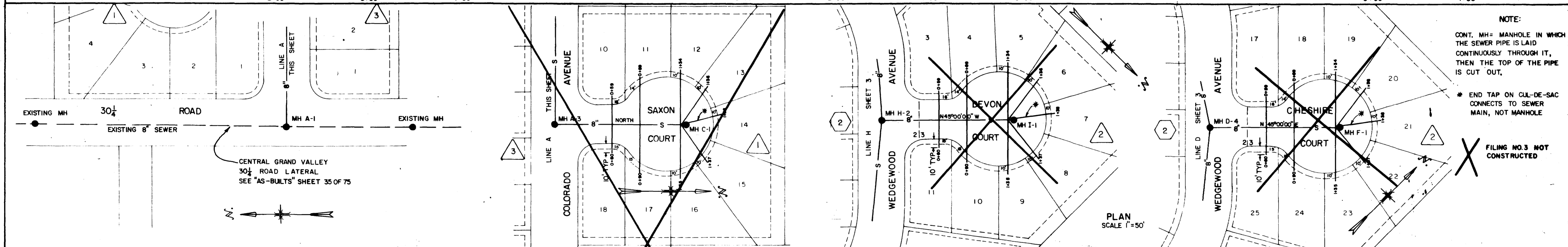
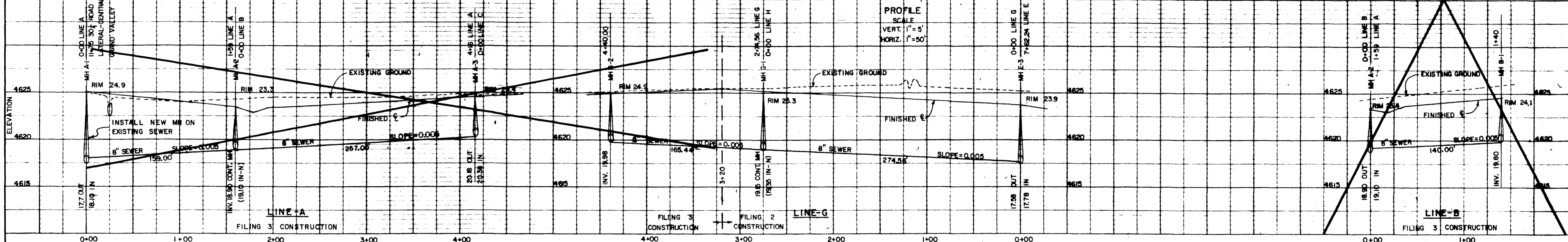
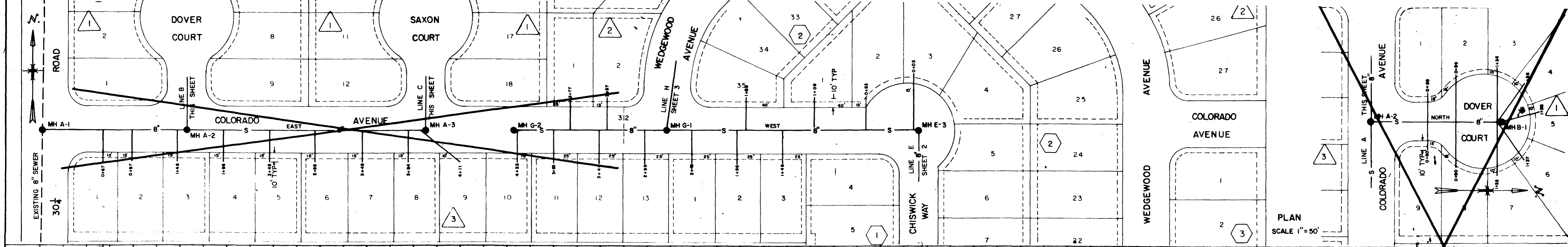
--- FILING NO. 3 NOT CONSTRUCTED

SCALE: 1" = 50'

AS BUILT - FILING NO. 2  
CTR.: LEON PARKERSON AUG. 1989

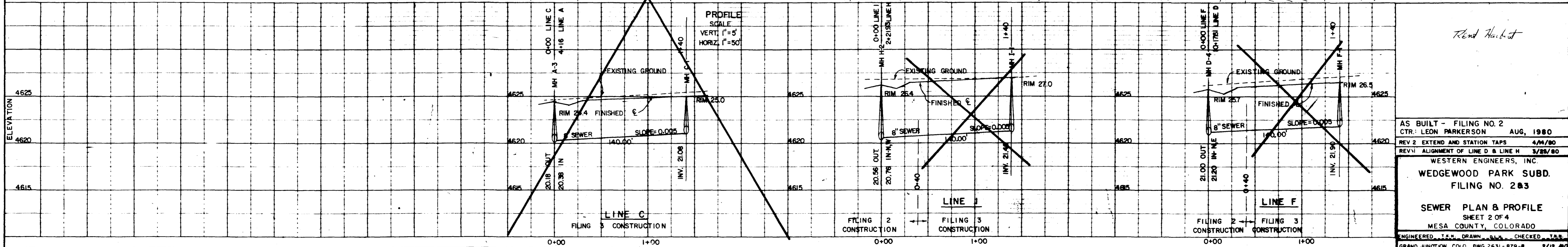


WESTERN ENGINEERS, INC.  
WEDGEWOOD PARK SUBD  
FILING NO. 203  
SEWER PLAN  
SHEET 1 OF 4  
HIGHLAND COUNTY, COLORADO



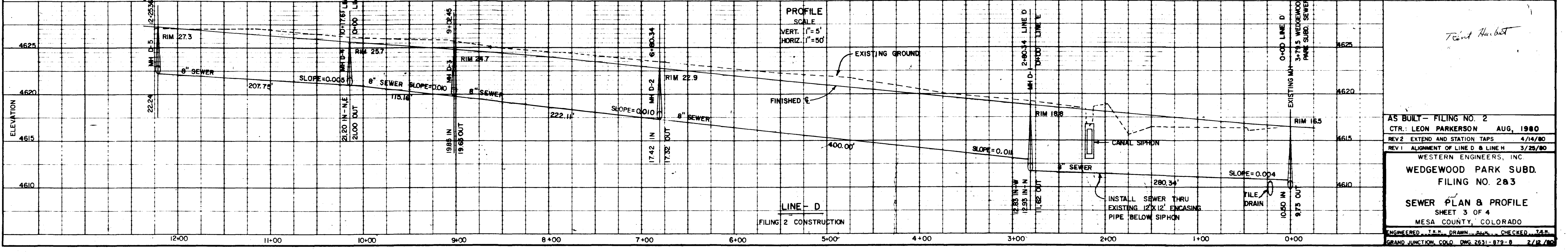
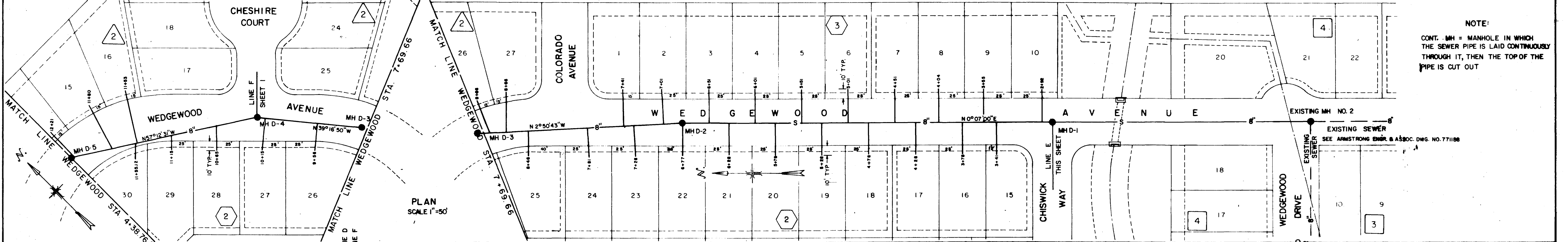
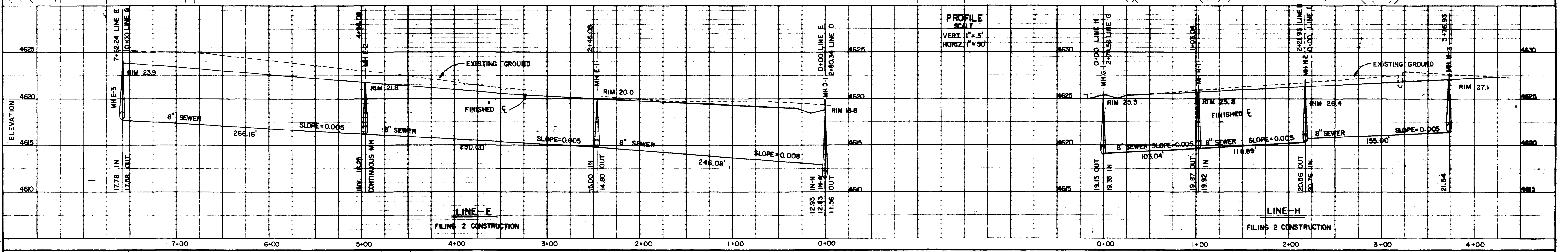
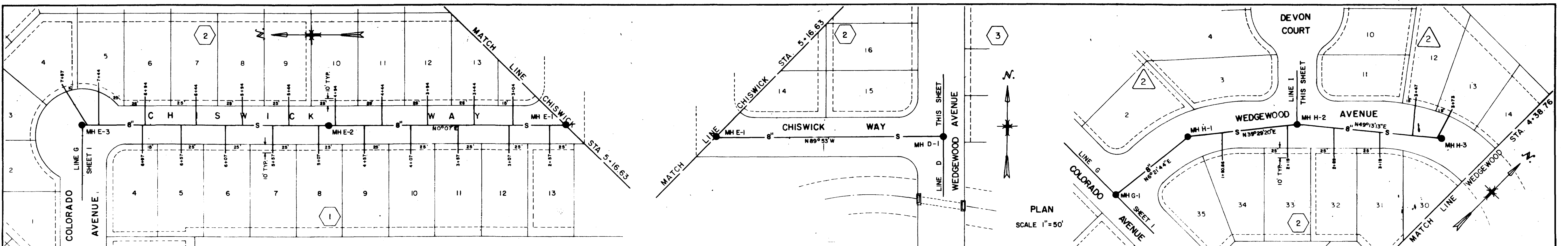
NOTE:  
CONT. MH= MANHOLE IN WHICH THE SEWER PIPE IS LAID CONTINUOUSLY THROUGH IT, THEN THE TOP OF THE PIPE IS CUT 'OUT'.  
\* END TAP ON CUL-DE-SAC CONNECTS TO SEWER MAIN, NOT MANHOLE

FILING NO.3 NOT CONSTRUCTED



AS BUILT - FILING NO. 2  
CTR. LEON PARKERSON AUG, 1980  
REV 2 EXTEND AND STATION TAPS 4/11/80  
REV 1 ALIGNMENT OF LINE D & LINE H 3/29/80  
WESTERN ENGINEERS, INC.  
WEDGEWOOD PARK SUBD.  
FILING NO. 2 & 3  
SEWER PLAN & PROFILE  
SHEET 2 OF 4  
MESA COUNTY, COLORADO  
ENGINEER, T.E.C. DRAWN, G.L.A. CHECKED, T.E.C.  
GRAND JUNCTION, COLO. DWG 2631-879-B 2/12/80

*Rend Herbst*



NOTE:  
CONT. MH = MANHOLE IN WHICH THE SEWER PIPE IS LAID CONTINUOUSLY THROUGH IT, THEN THE TOP OF THE PIPE IS CUT OUT

AS BUILT - FILING NO. 2  
 CTR.: LEON PARKERSON AUG. 1980  
 REV 2 EXTEND AND STATION TAPS 4/14/80  
 REV 1 ALIGNMENT OF LINE D & LINE H 3/25/80  
 WESTERN ENGINEERS, INC.  
**WEDGEWOOD PARK SUBD.**  
**FILING NO. 283**  
**SEWER PLAN & PROFILE**  
 SHEET 3 OF 4  
 MESA COUNTY, COLORADO  
 ENGINEER: T.M. DRAWN: B.W. CHECKED: T.M.  
 GRAND JUNCTION, COLO. DWG. 2631-879-B 2/12/80