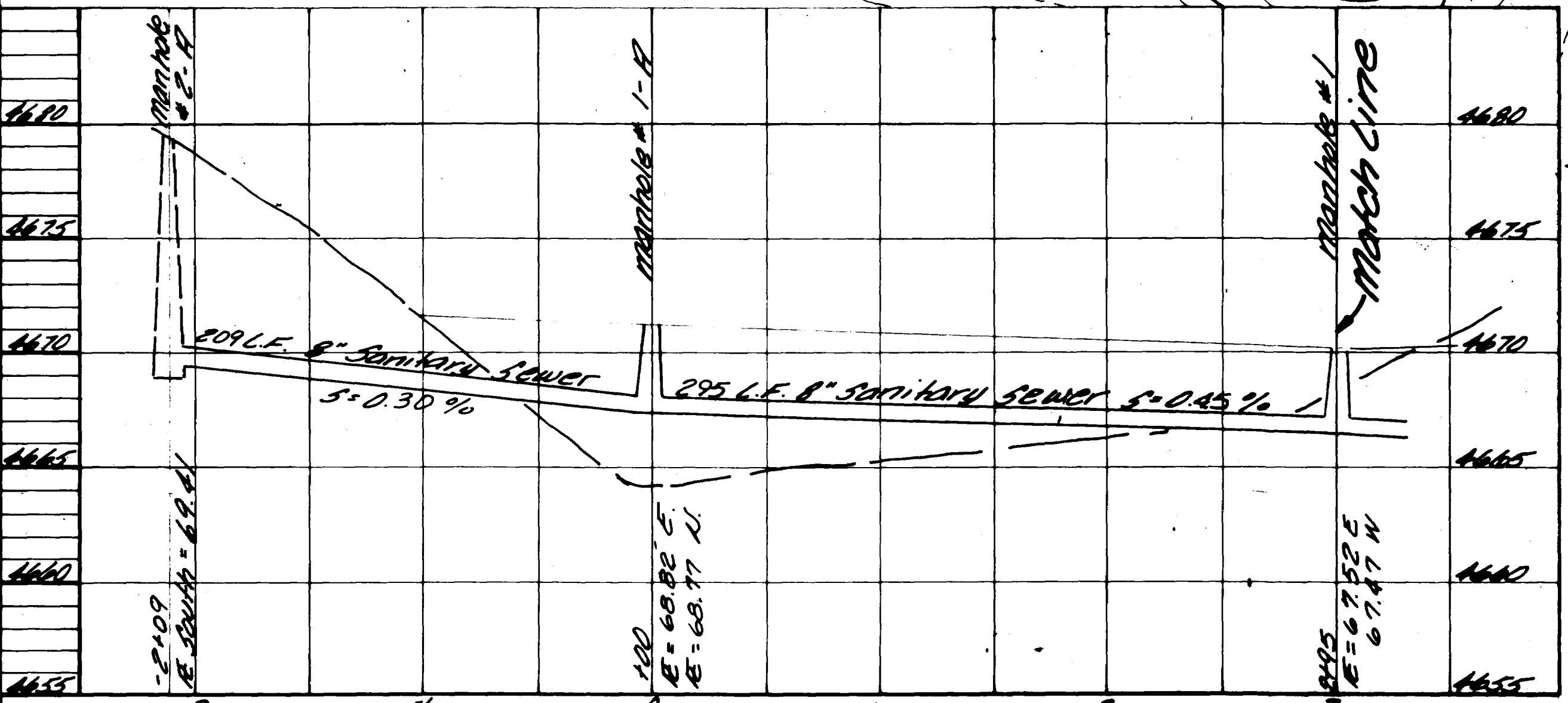
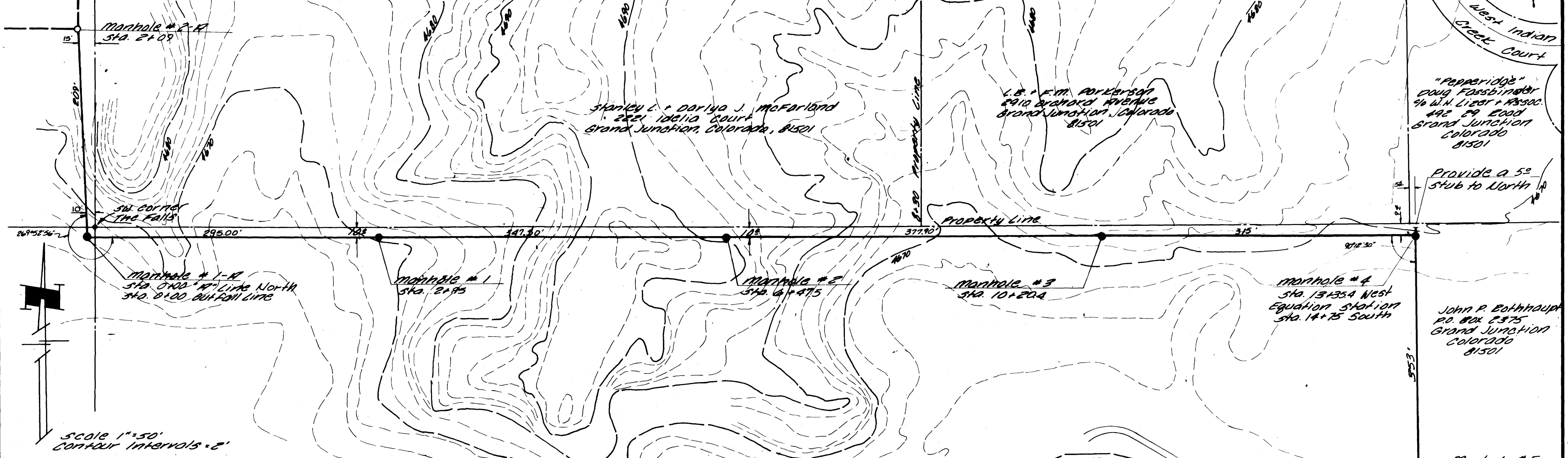


REVISIONS	BY

PARAGON ENGINEERING, INC.  
P.O. Box 1872  
Grand Junction, Colorado 81501

*D. J. Dill*

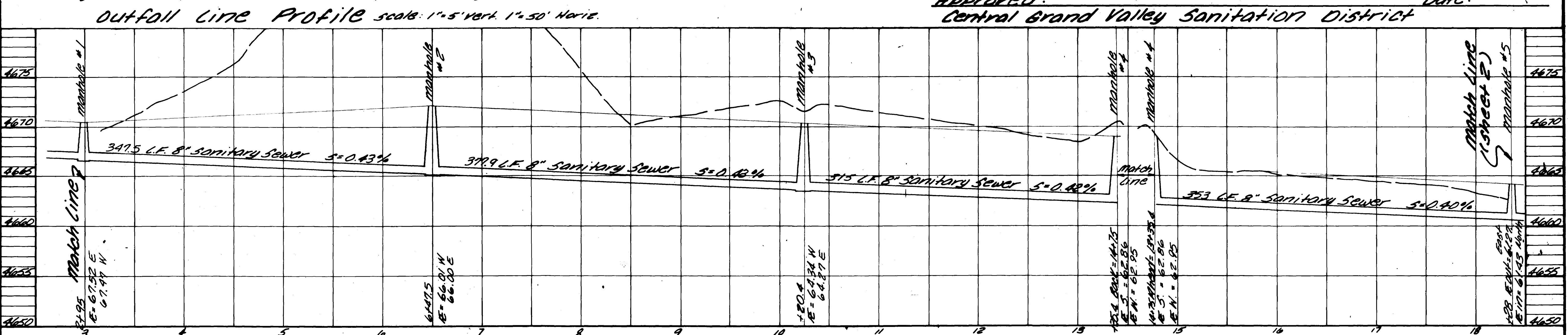
The Falls  
Mesa County, Colorado  
Sanitary Sewer Outfall Line



- General Notes:
- 1) Manhole cover to be set to grade established by the engineer.
  - 2) All construction to be done in accordance with the Central Grand Valley Sanitation District Specifications.
  - 3) All construction to be done in accordance with the Colorado Health Dept. Specifications.
  - 4) Contractor is responsible for locating all buried utilities and protecting the same.

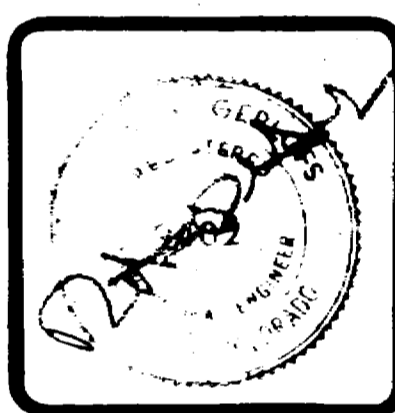
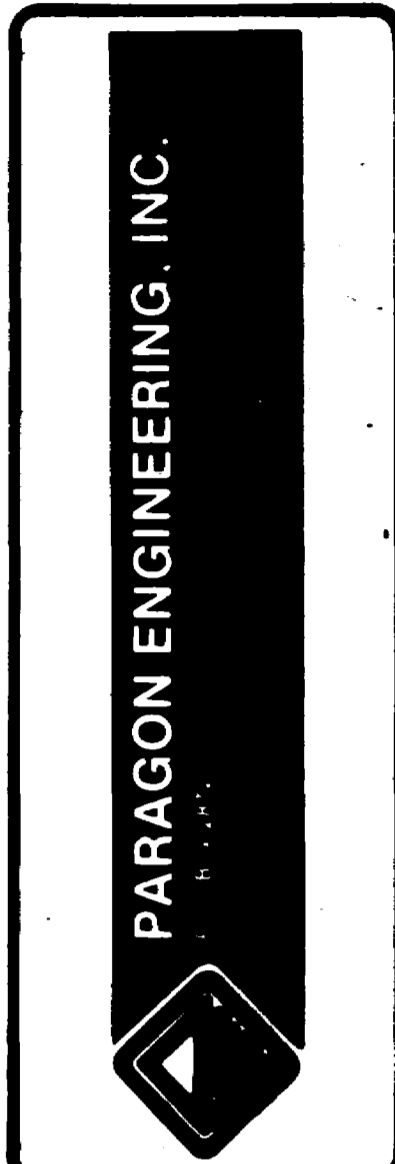
NOTE:  
This is to certify that the system infiltration does not exceed 200 gallons per inch diameter per mile of length per day.

Approved: \_\_\_\_\_ Date: \_\_\_\_\_  
Central Grand Valley Sanitation District

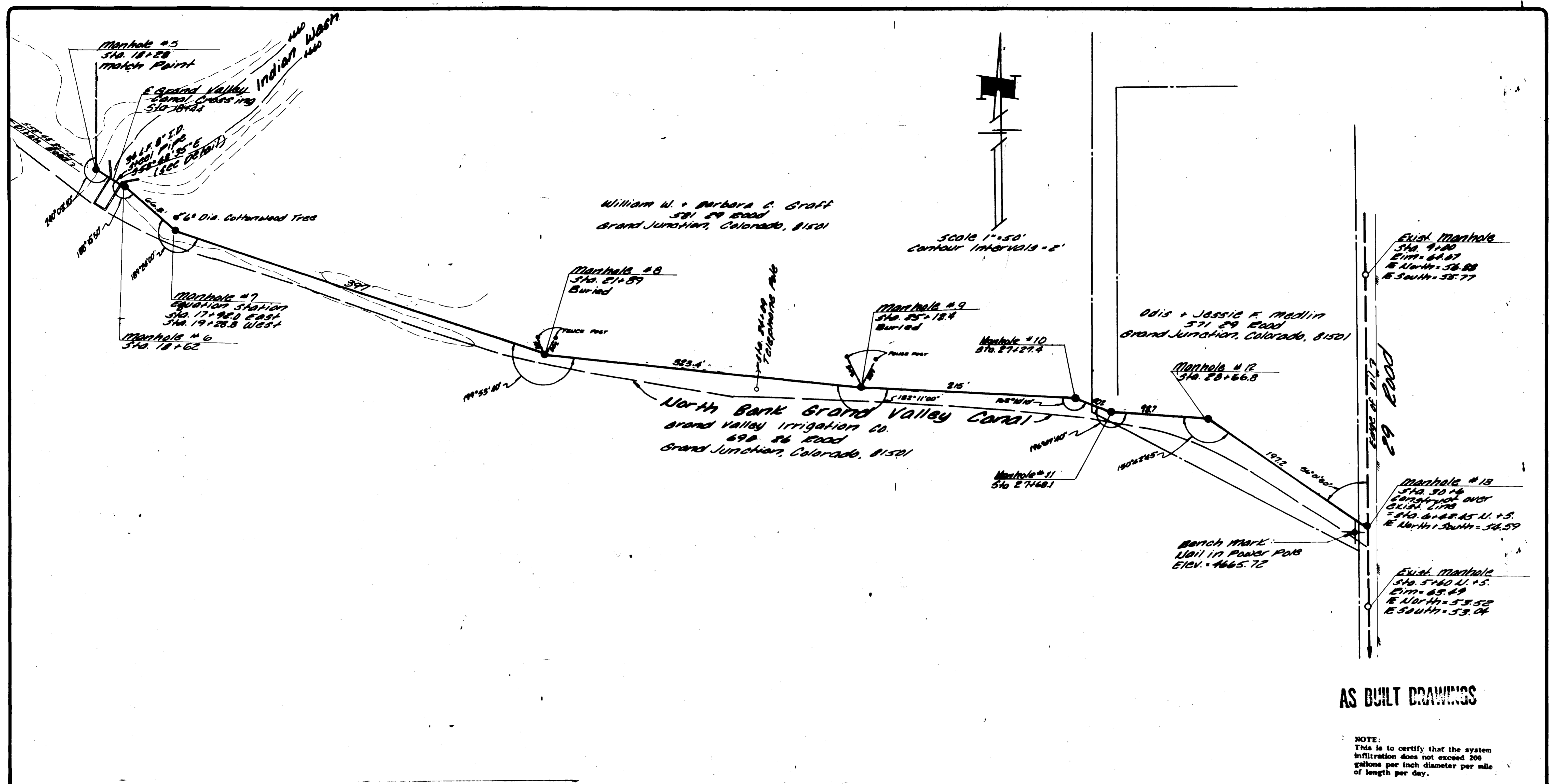


Outfall Line Profile (continued) scale: 1"=5' Vert. 1"=50' Horiz.

CHECKED	
DATE	March, 1980
SCALE	As Shown
REVISIONS	BY

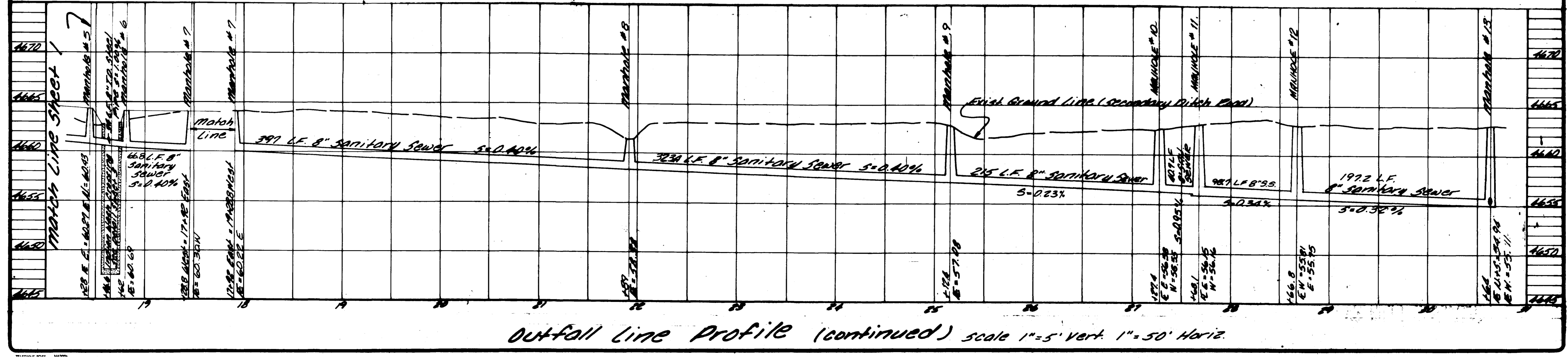


THE FOLLS  
 MESO COUNTY, COLORADO  
 SANITARY SEWER OUTFALL LINE



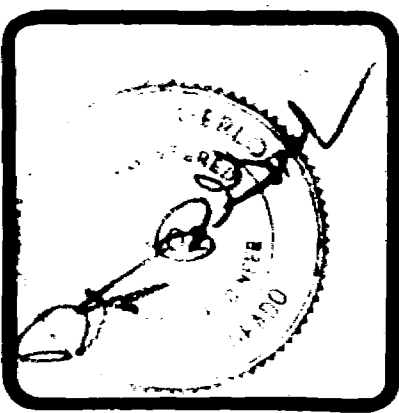
AS BUILT DRAWINGS

NOTE:  
 This is to certify that the system  
 infiltration does not exceed 200  
 gallons per inch diameter per mile  
 of length per day.

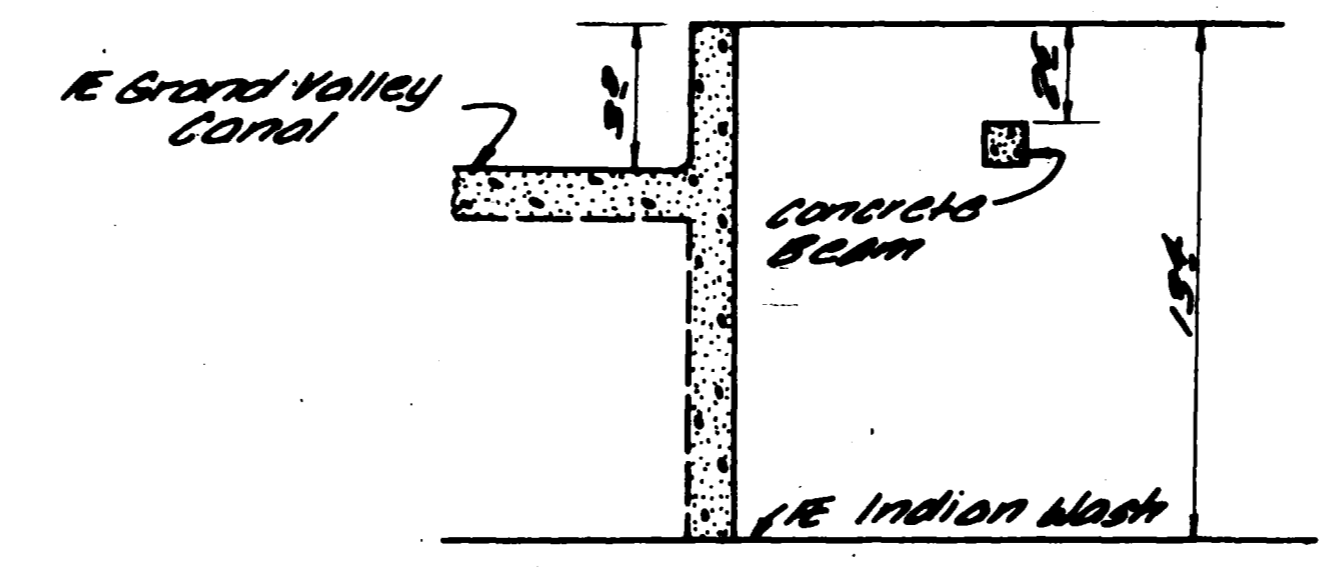
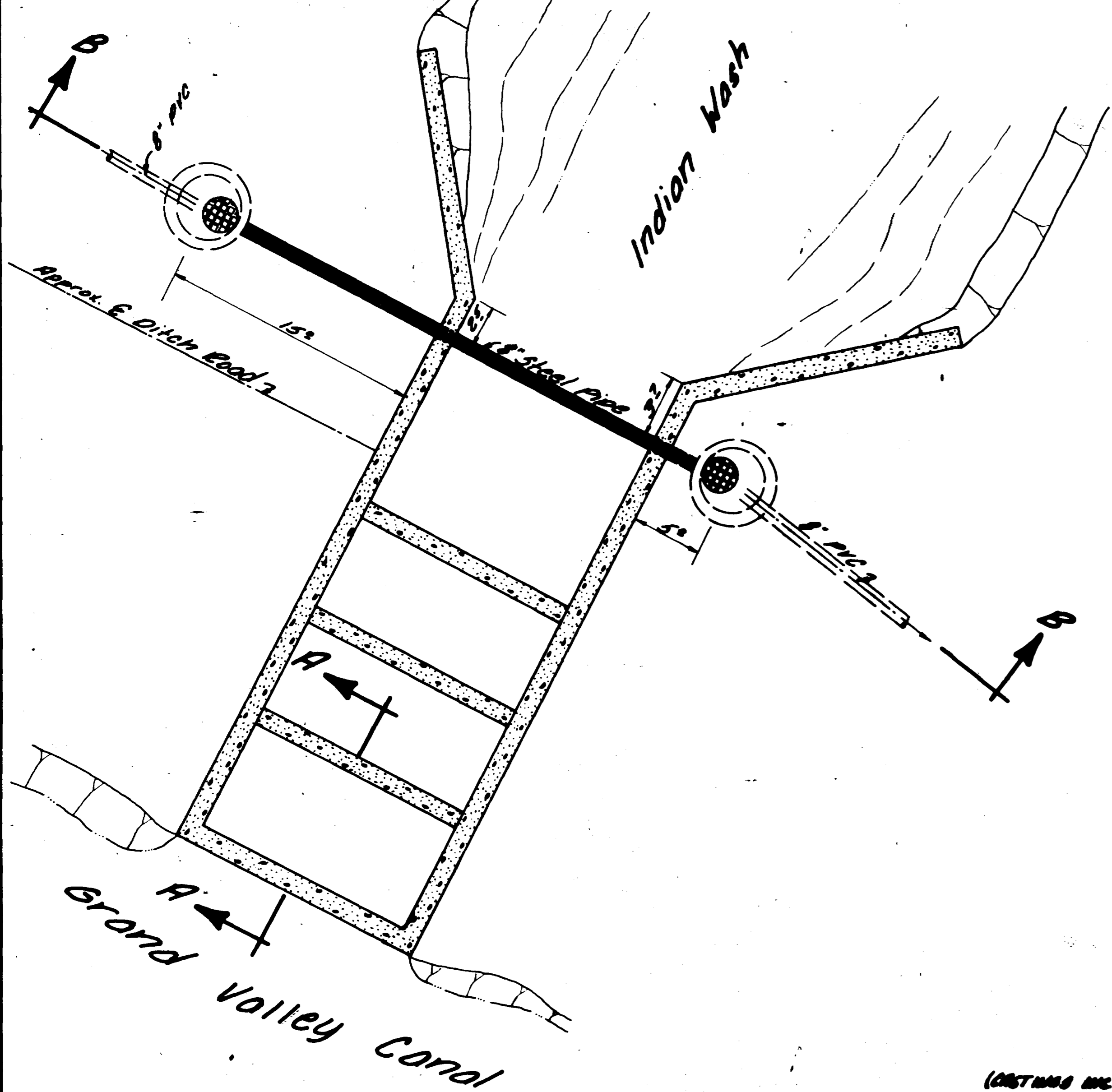


REVISIONS	BY

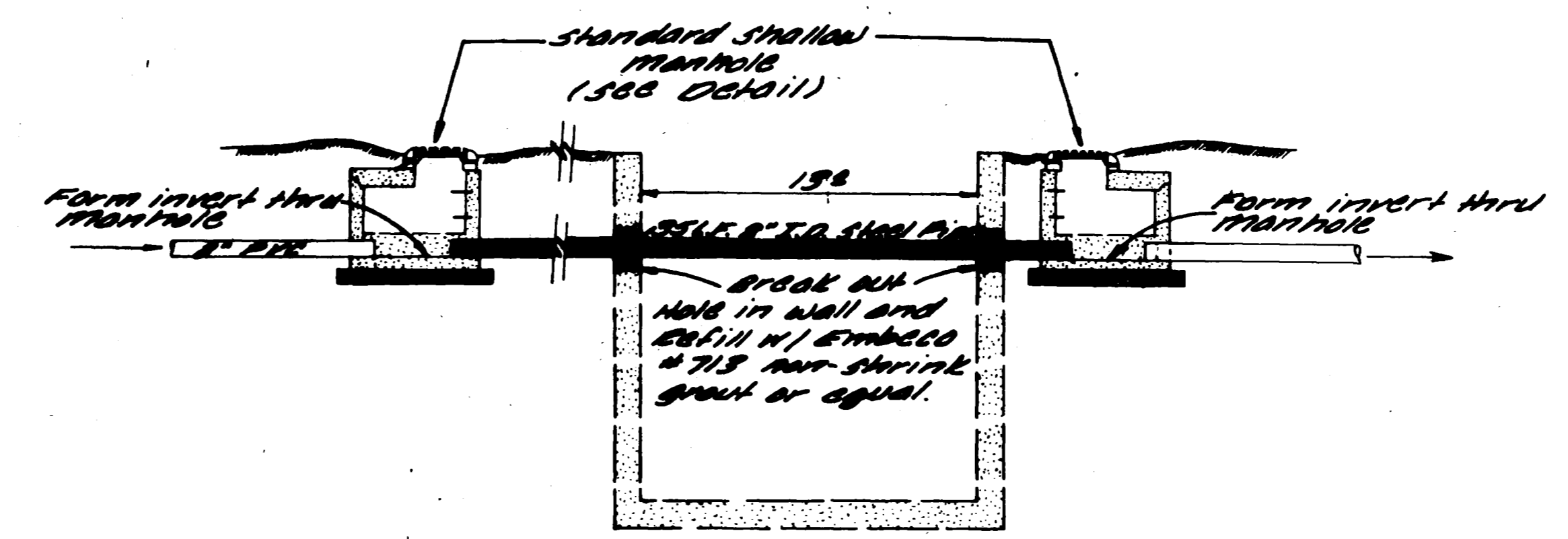
PARAGON ENGINEERING, INC.



The Falls  
Mesa County, Colorado  
Sanitary Sewer Outfall Details



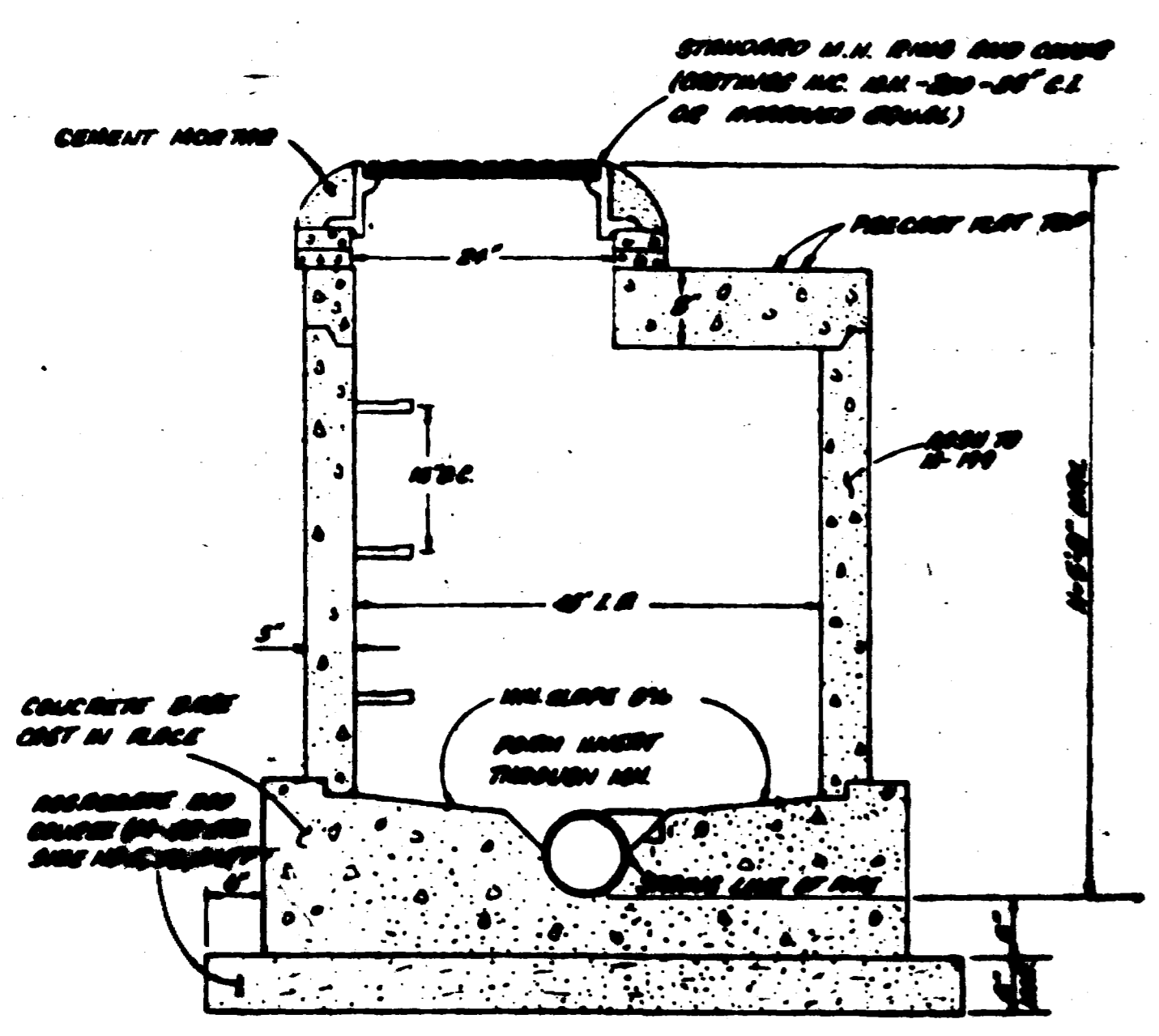
**SECTION A-A**  
Scale 1"=5'-0"



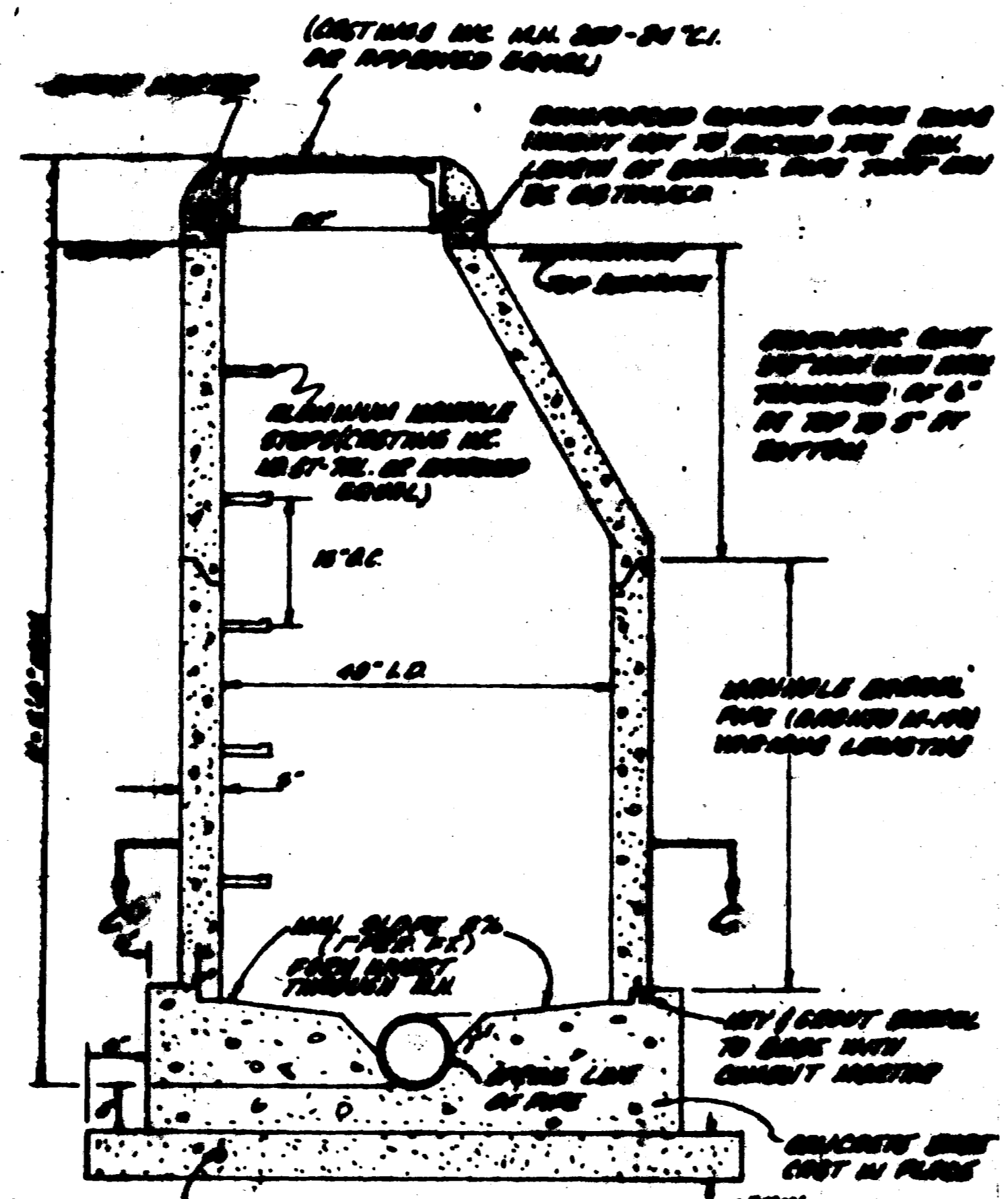
Note: Steel pipe shall conform to ASTM standards C-200-75. Minimum wall thickness is 0.839 inches. The steel pipe shall be cold-rolled in accordance with ASTM Std. C-200-75 except that a fibrous-glass mat shall be used in place of the asbestos-felt wrap. Pipe shall be whitewashed after fabrication.

**SECTION B-B**  
Scale 1"=5'-0"

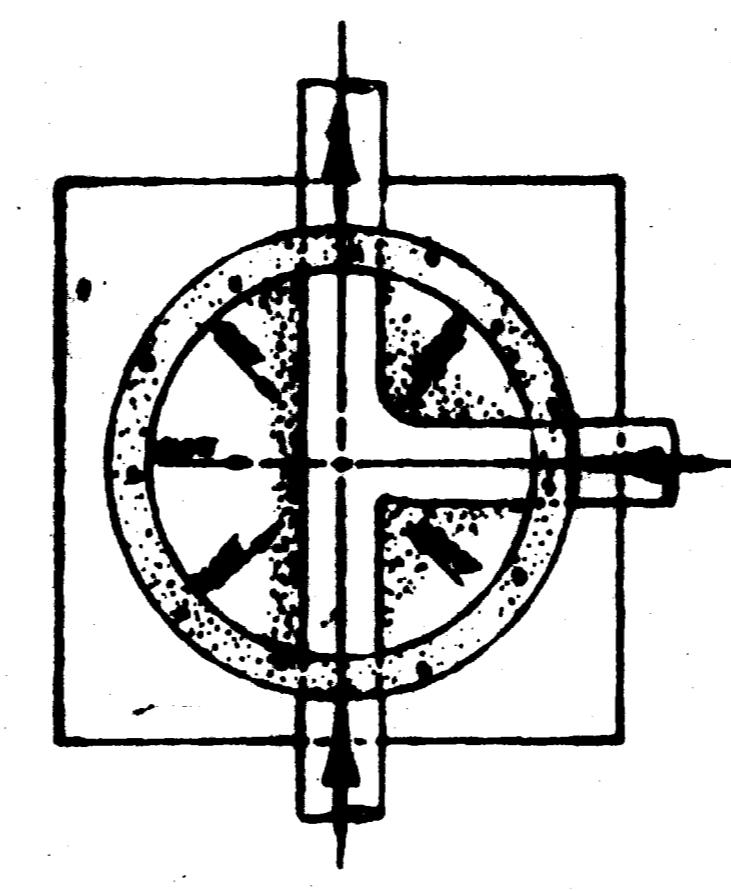
**Crossing Detail**  
Scale 1"=5'-0"



**STANDARD SHALLOW MANHOLE**  
10 Scale



**STANDARD MANHOLE**  
10 Scale



**Y JUNCTION**  
**SECTION C-C**  
10 Scale

AS BUILT DRAWINGS