

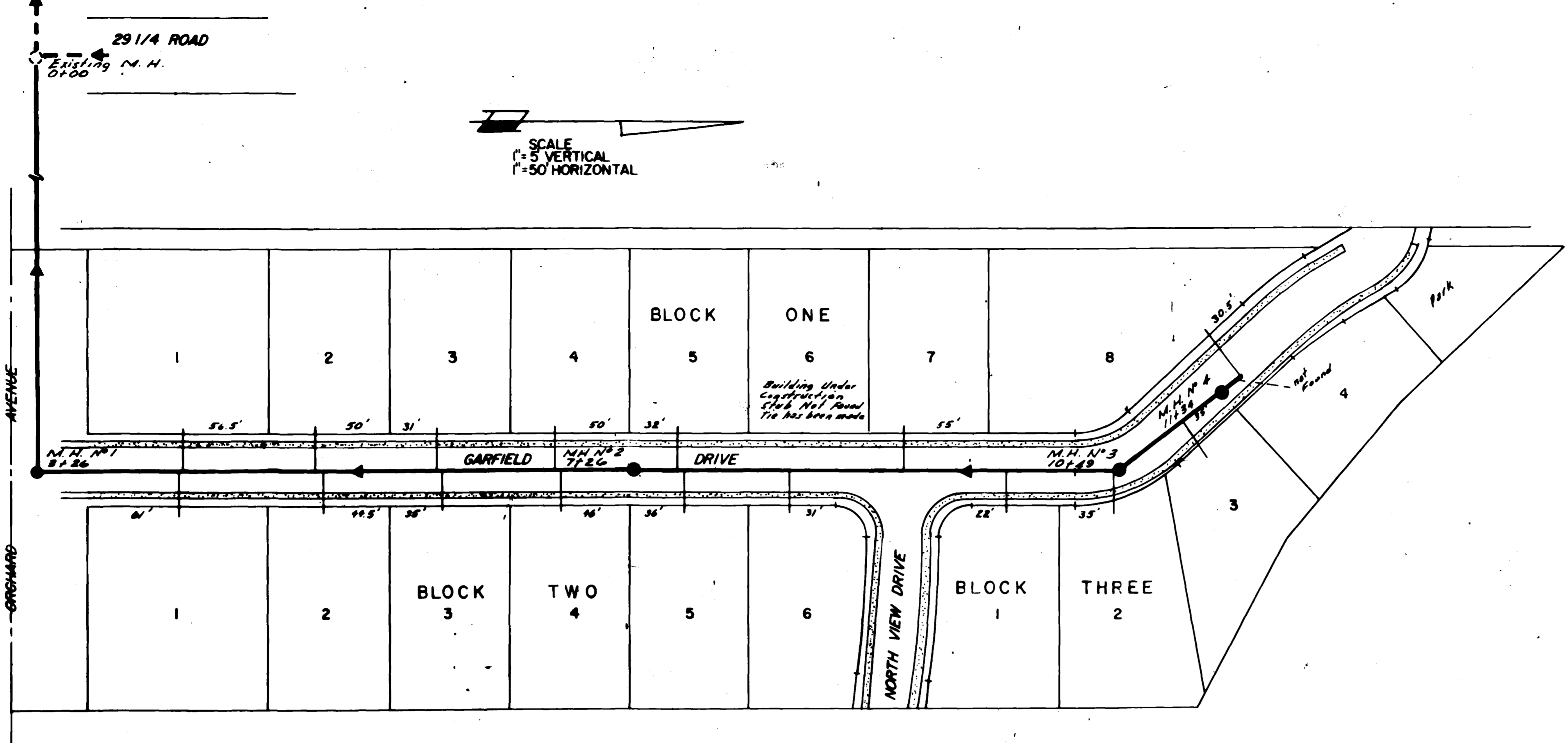
GENERAL NOTES:

BENCHMARK - ELEVATION 56.88 - NORTH RIM OF SEWER MANHOLE AT INTERSECTION OF 29 1/4 AND ORCHARD AVENUE

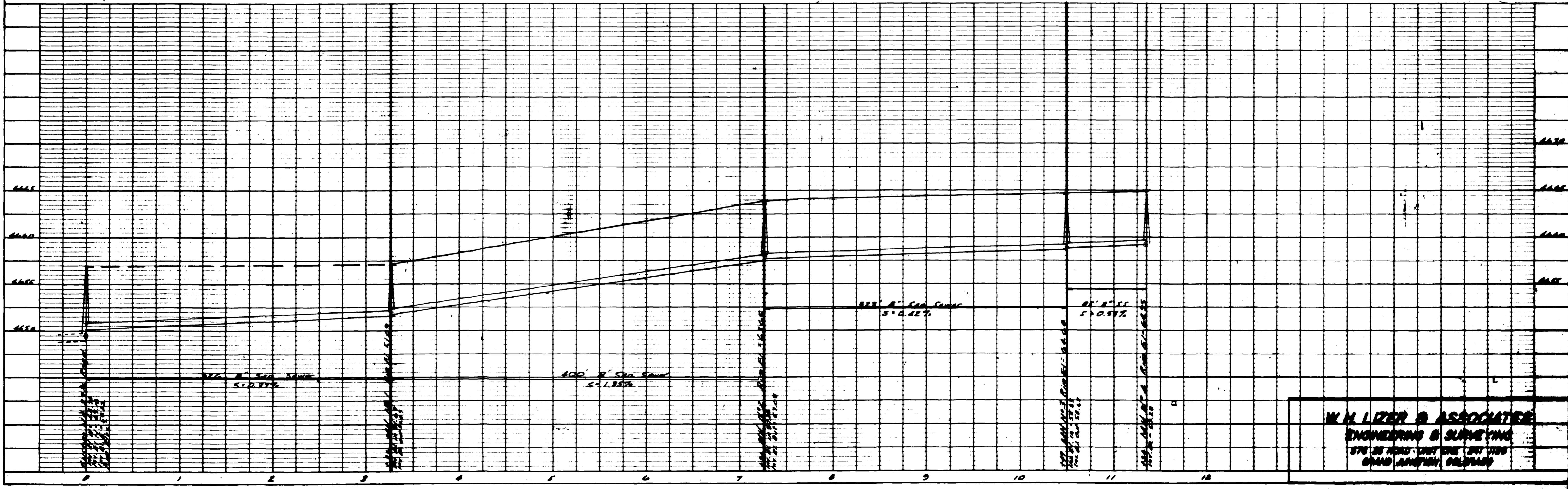
THIS SUBDIVISION IS SERVED BY THE CENTRAL GRAND VALLEY SANITATION DISTRICT

THIS IS TO CERTIFY THAT THE SYSTEM INFILTRATION DOES NOT EXCEED 800 GALLONS PER INCH DIAMETER PER MILE OF LENGTH PER DAY.

checked 12/16/80
Walter H. Lizer



**SEWER AS-BUILT
 BOOKCLIFF TERRACE SUBDIVISION**



WALTER H. LIZER & ASSOCIATES
 ENGINEERING & SURVEYING
 570 29th Street, Suite 201
 Grand Junction, Colorado