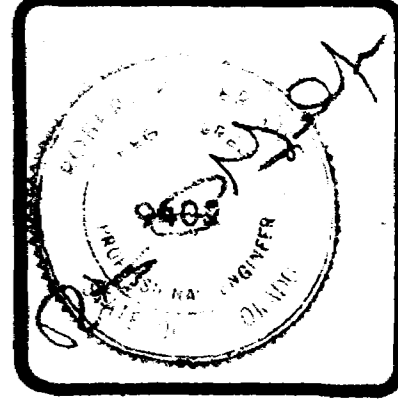


CHECKED	
DATE	
JULY, 1980	
SCALE	
AS SHOWN	

REVISIONS	BY

**PARAGON ENGINEERING, INC.**  
 P.O. Box 2872  
 Grand Junction, Colorado 81501 (303) 243-8966



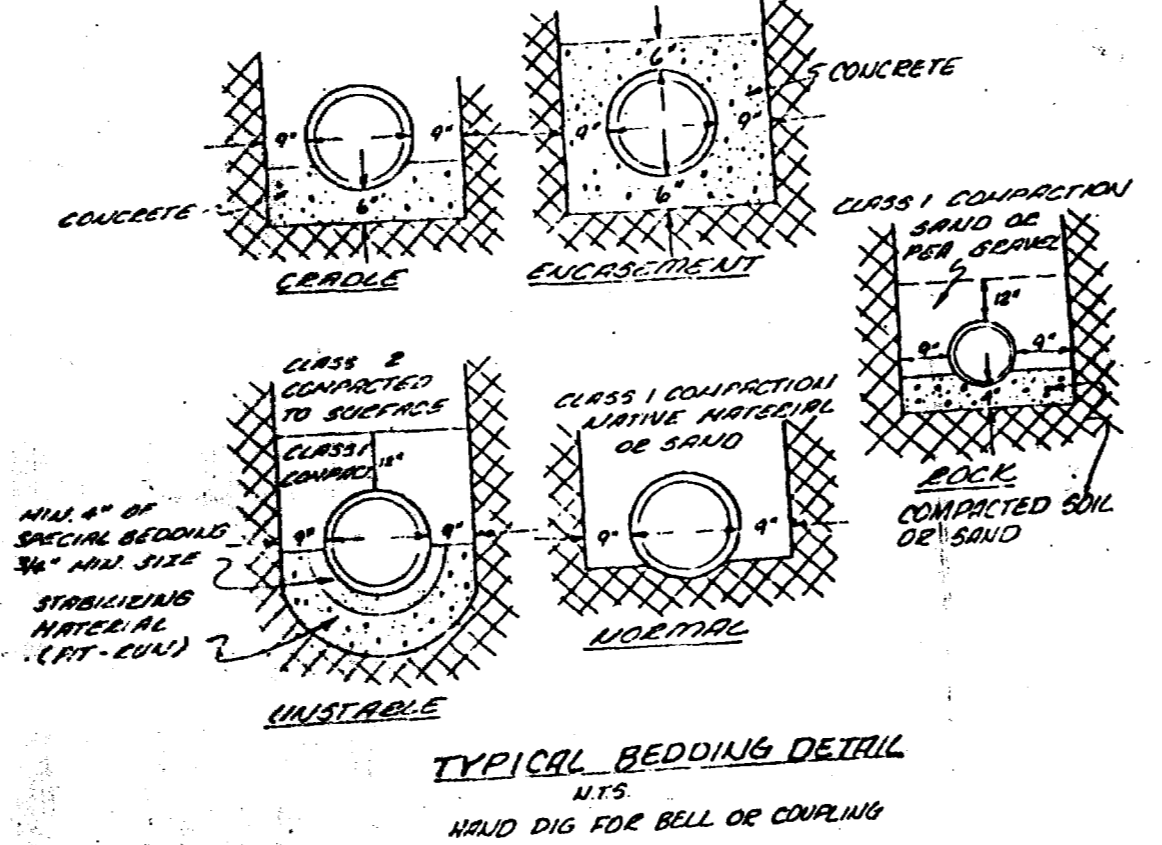
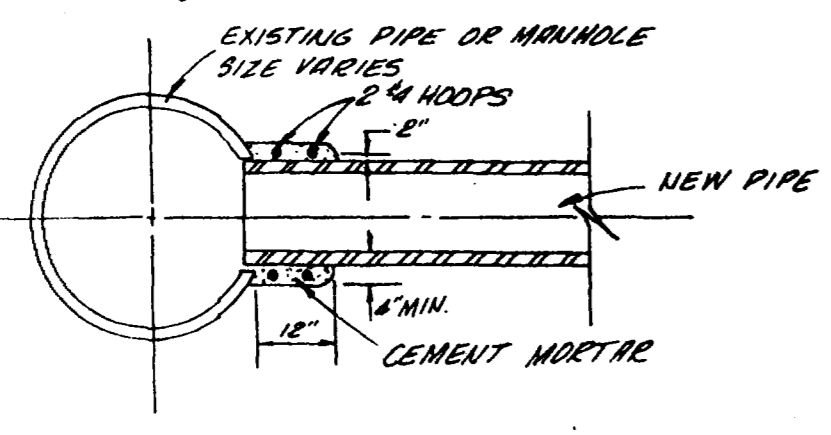
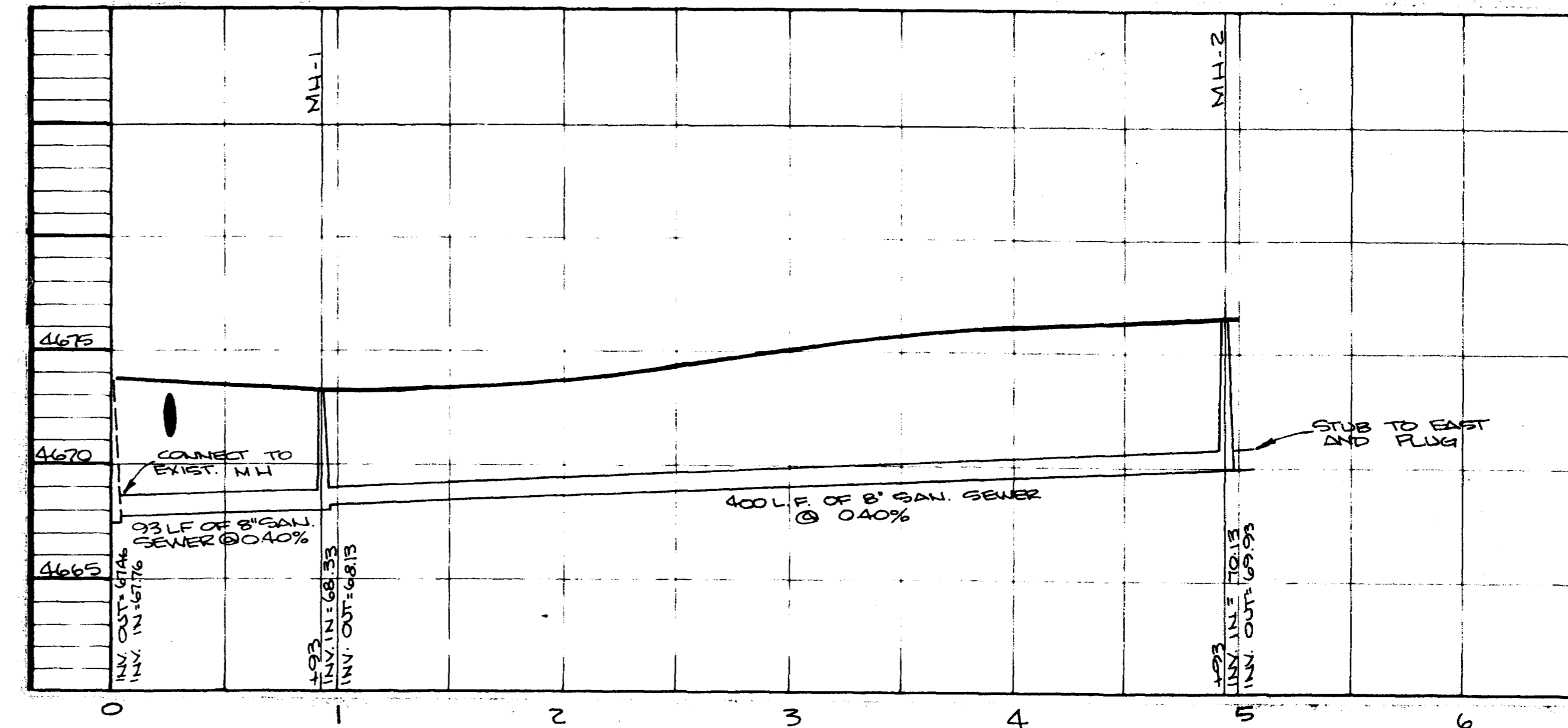
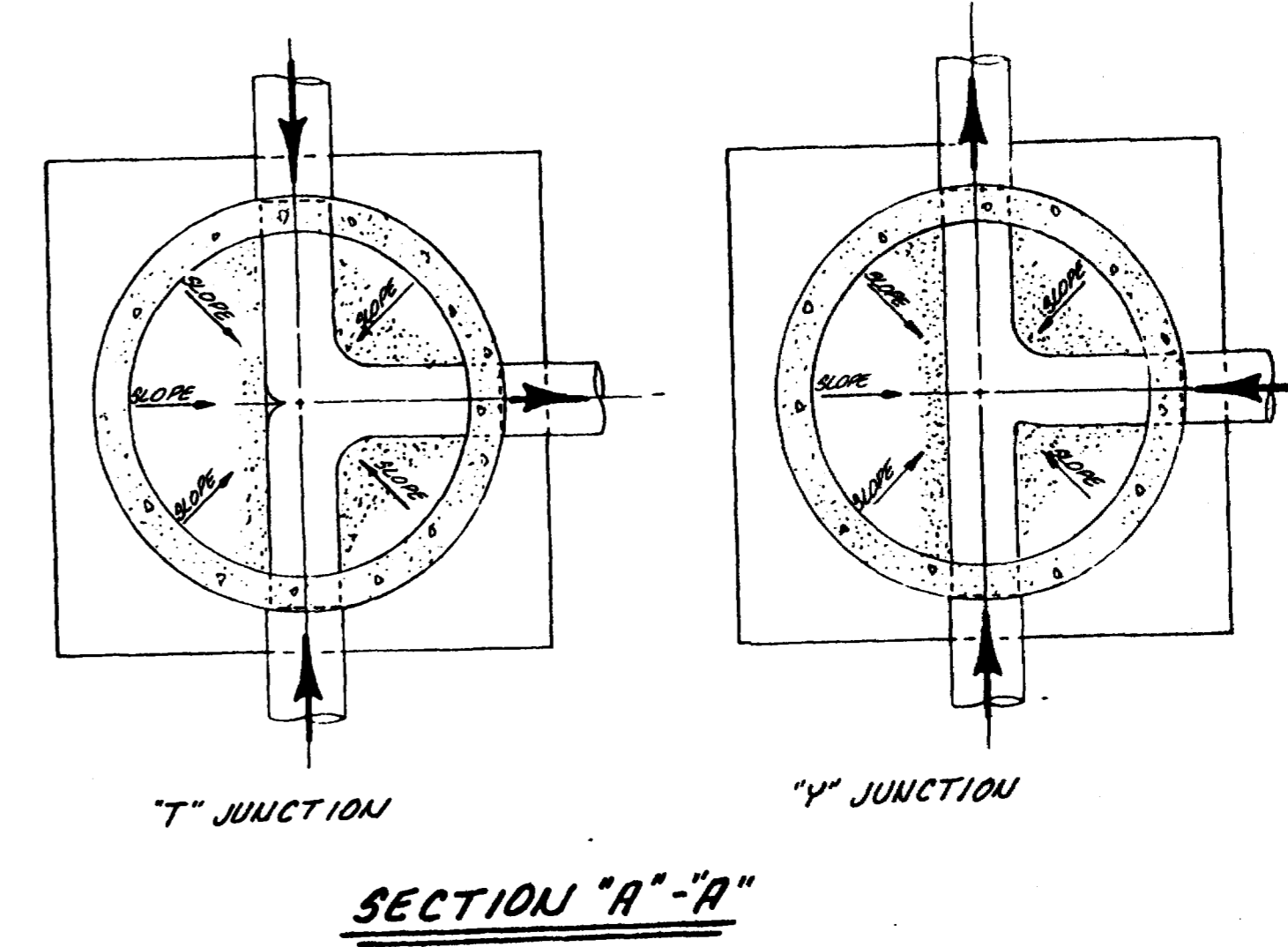
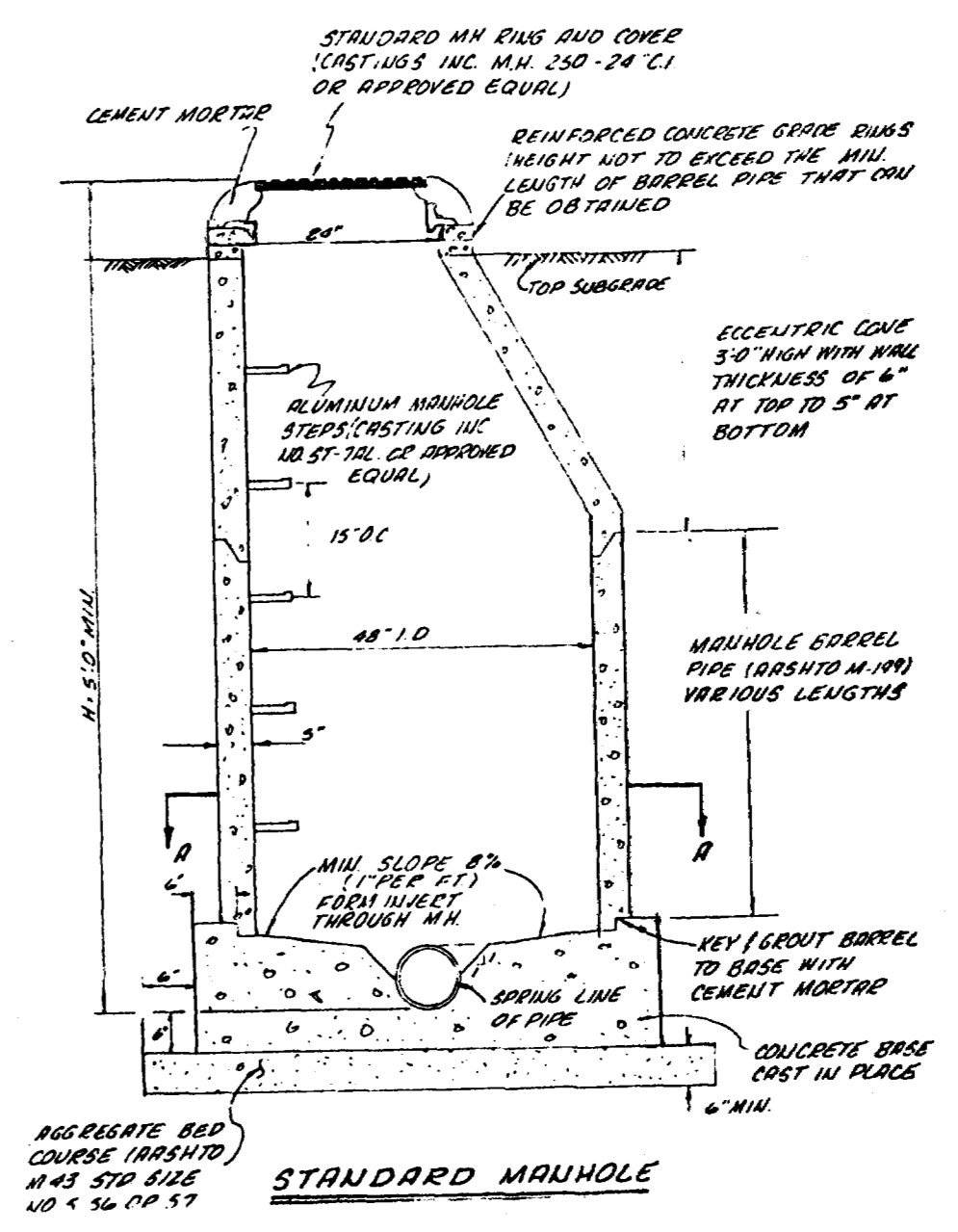
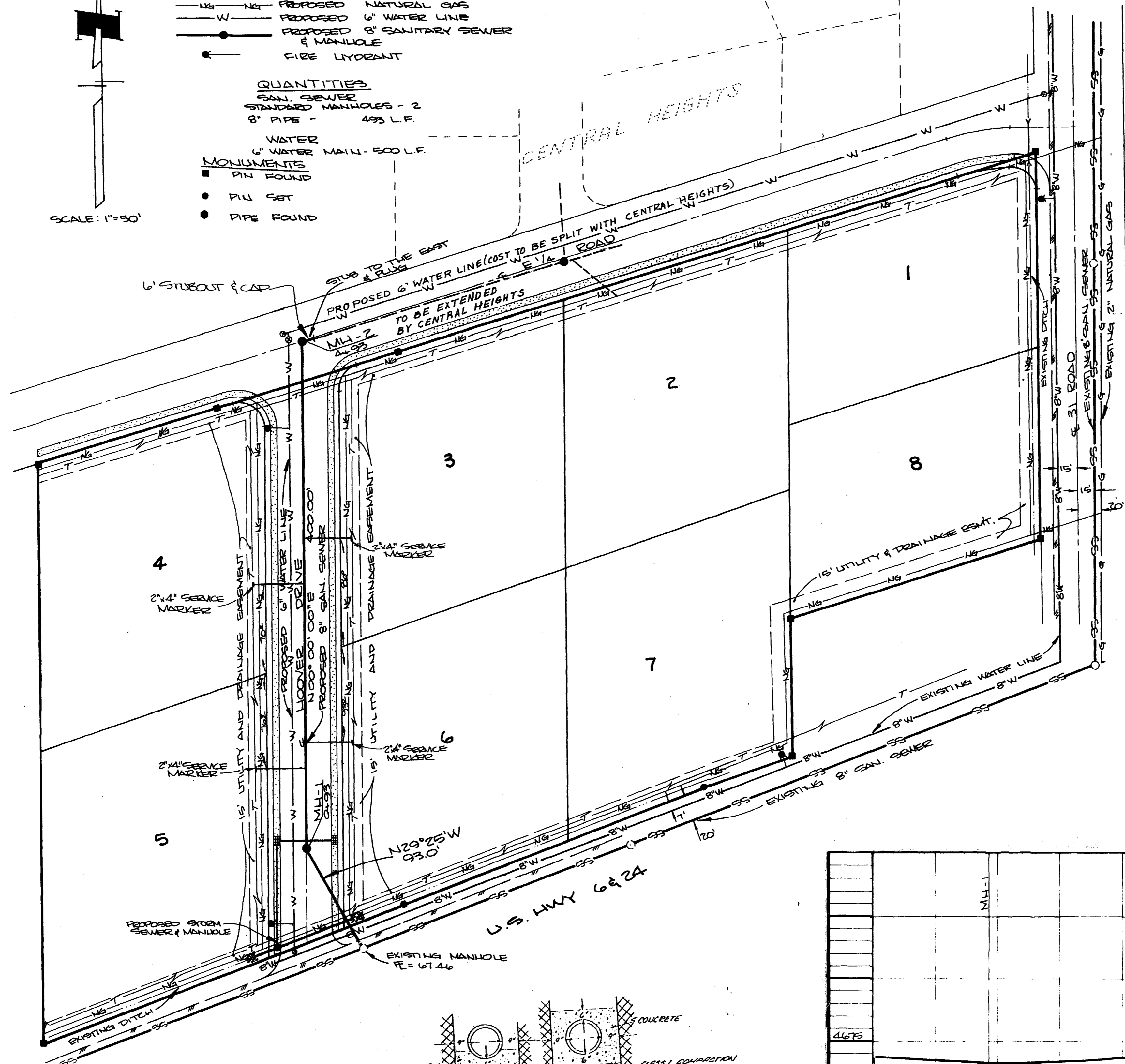
UTILITIES COMPOSITE &  
 SANITARY SEWER PROFILES  
 31 ROAD BUSINESS PARK  
 MESA COUNTY, COLORADO

SHEET
1
OF 2 SHEETS

**GENERAL NOTES:**  
 1. ALL CONSTRUCTION TO BE DONE IN ACCORDANCE WITH CENTRAL GRAND VALLEY SANITATION DISTRICT.  
 2. TOP OF ECCENTRIC CONE TO BE SET AT TOP OF SUBGRADE (STREET CONTRACTOR TO SET RIMS AT FINISHED GRADE OF STREET).  
 3. WATER AND SEWER SERVICES SHALL HAVE A MINIMUM OF 10 FT. SEPARATION AND WATER SERVICES SHALL BE LOCATED ON THE UPHILL SIDE OF SEWER SERVICES.  
 EXISTING UTILITIES ARE AS NOTED.

- LEGEND**
- T — PROPOSED TELEPHONE & ELECTRIC LINES
  - NG — PROPOSED NATURAL GAS
  - W — PROPOSED 6" WATER LINE
  - PROPOSED 8" SANITARY SEWER & MANHOLE
  - FIRE HYDRANT
- QUANTITIES**
- SAN. SEWER STANDARD MANHOLES - 2
  - 8" PIPE - 493 L.F.
  - WATER 6" WATER MAIN - 500 L.F.
- MONUMENTS**
- PIN FOUND
  - ALL SET
  - PIPE FOUND

SCALE: 1"=50'



AS BUILT DRAWING

AS BUILT DRAWINGS