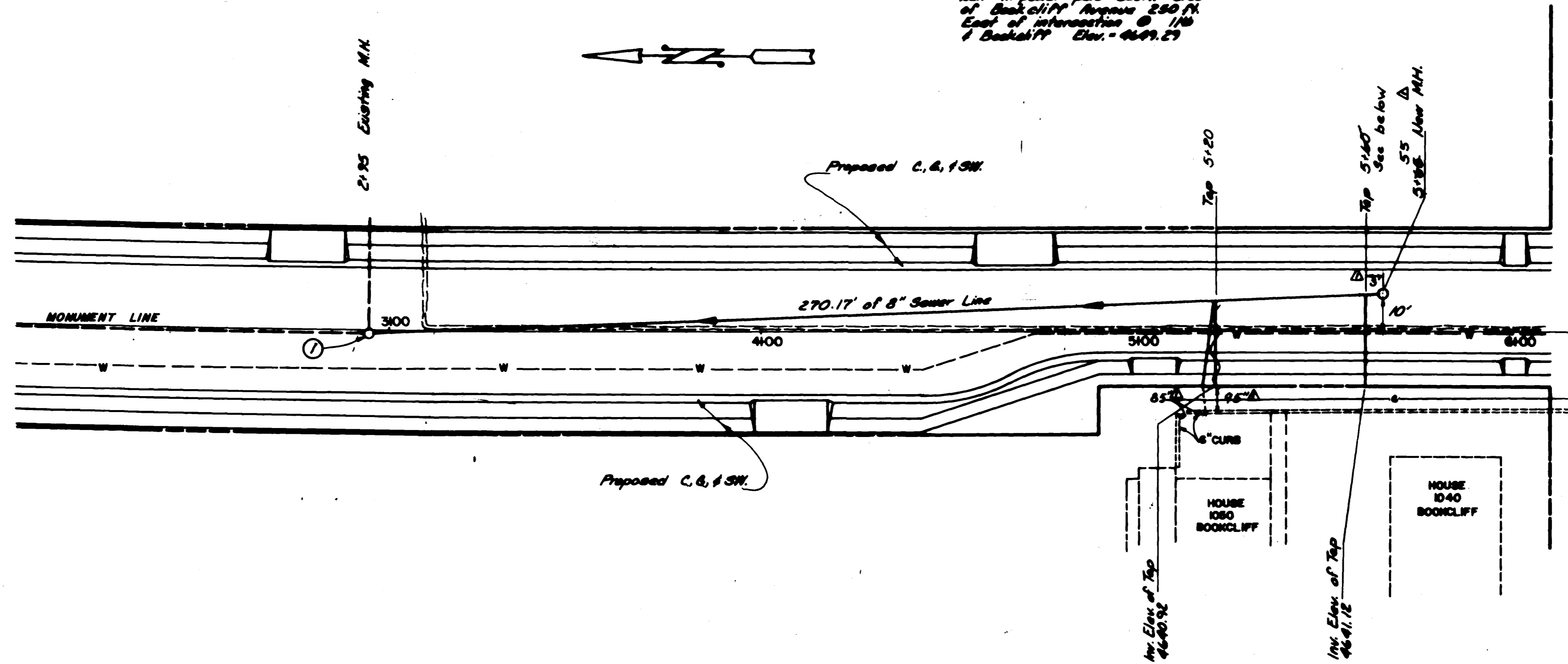


BENCH MARK

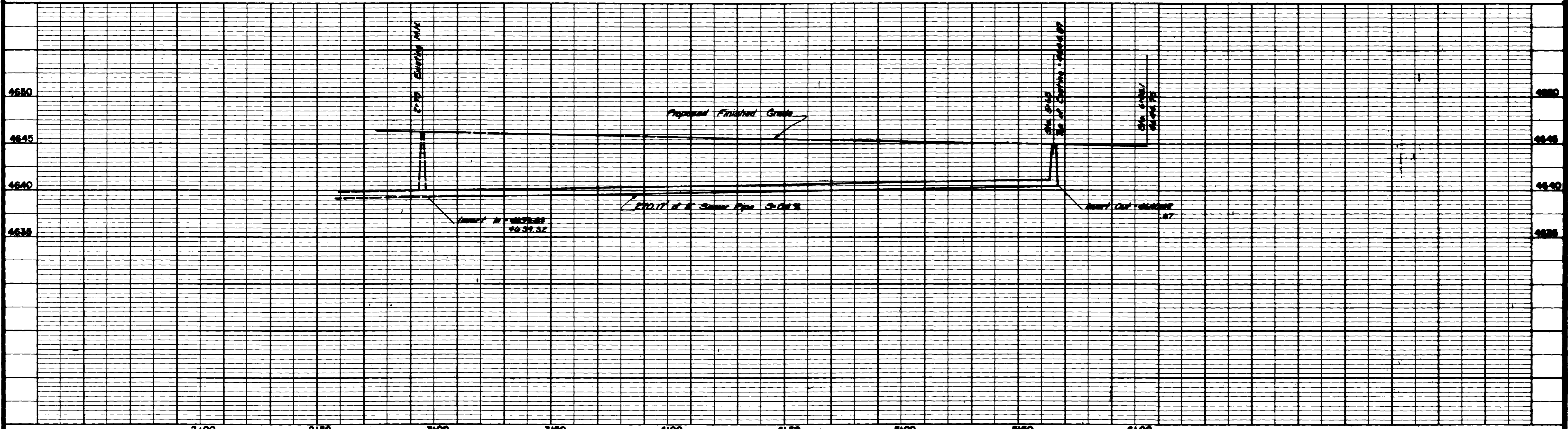
Nail in power pole South side of Book Cliff Avenue 250 ft East of intersection @ 1st & Book Cliff Elev. = 4649.27



CONSTRUCTION NOTE

① Verify the invert elevation prior to construction. Make changes in invert elevation of end MH and taps as required.

Note: Taps at the end of line are 30" above to top of pipe.



DESCRIPTION	DATE	DRAWN BY Luther Martin	DATE 8-5-80	SCALE	DEPARTMENT OF PUBLIC WORKS AND UTILITIES ENGINEERING DIVISION CITY OF GRAND JUNCTION, COLORADO	SEWER LINE EXTENSION 11th STREET	SHEET NO.
REVISION A "As built info"	2-5-81	CHECKED BY	DATE	HORIZ. 1"=20'			OF
REVISION B		APPROVED BY J.H.T.	DATE 8-5-80	VERT. 1"=3'			FILE NO.
REVISION C		FIELD BOOK NO.	PAGE				02-262