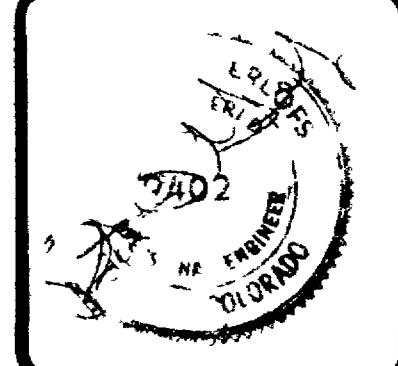
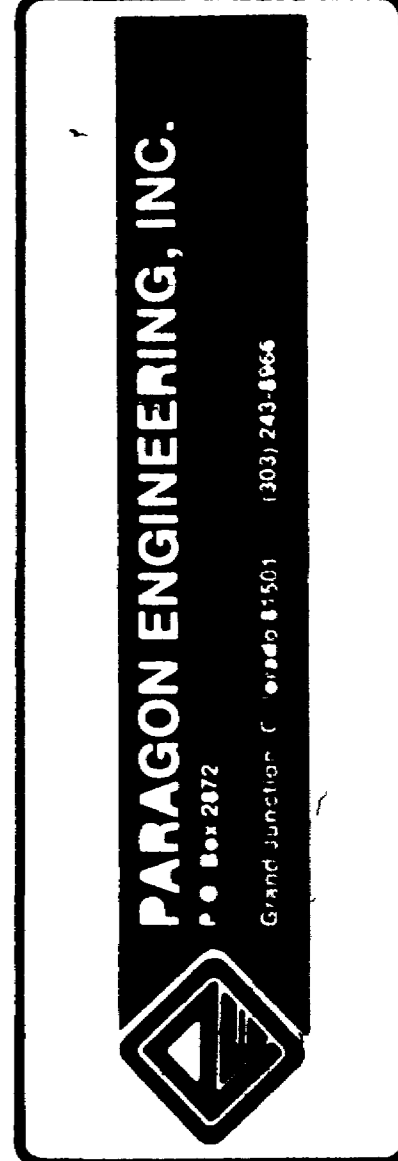


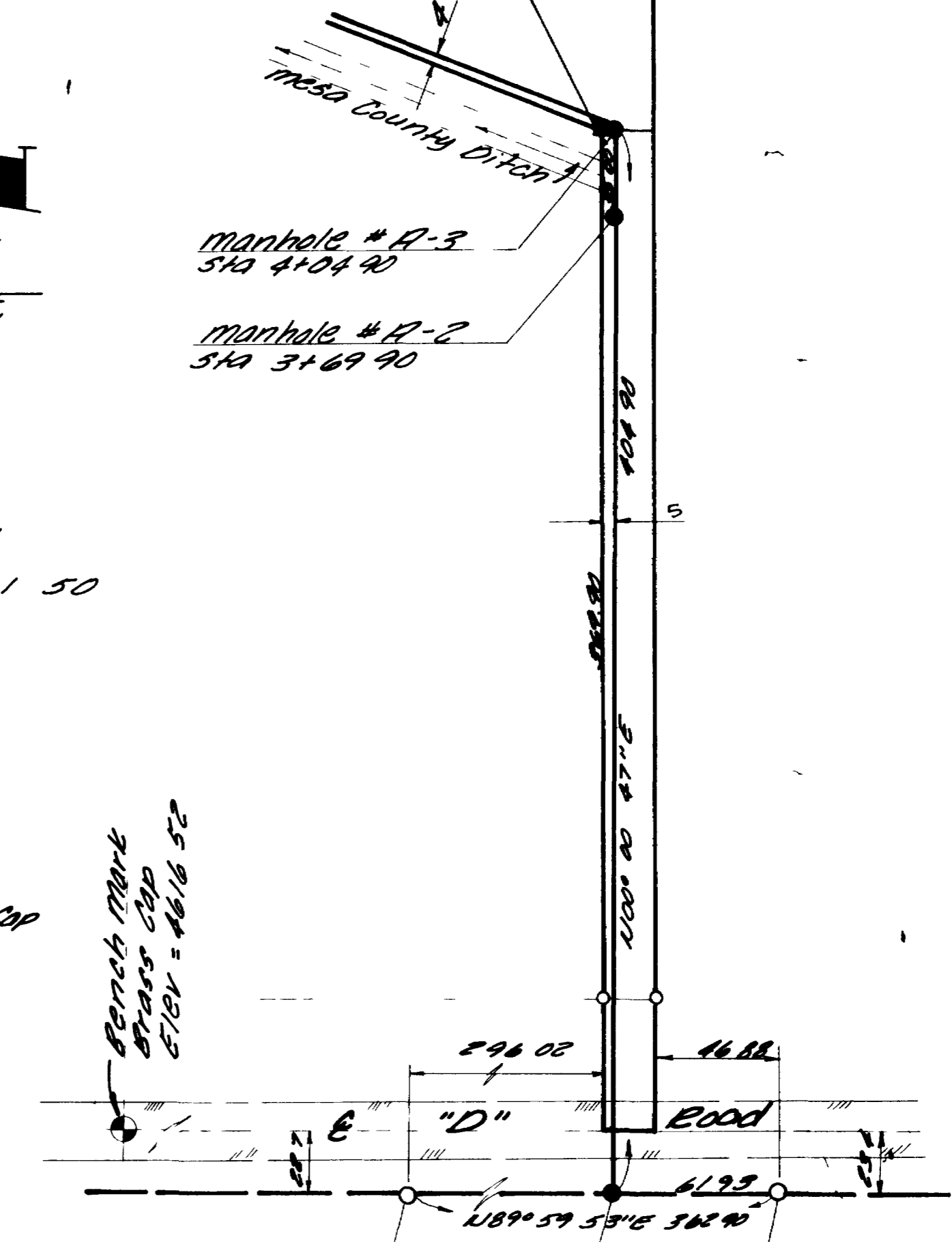
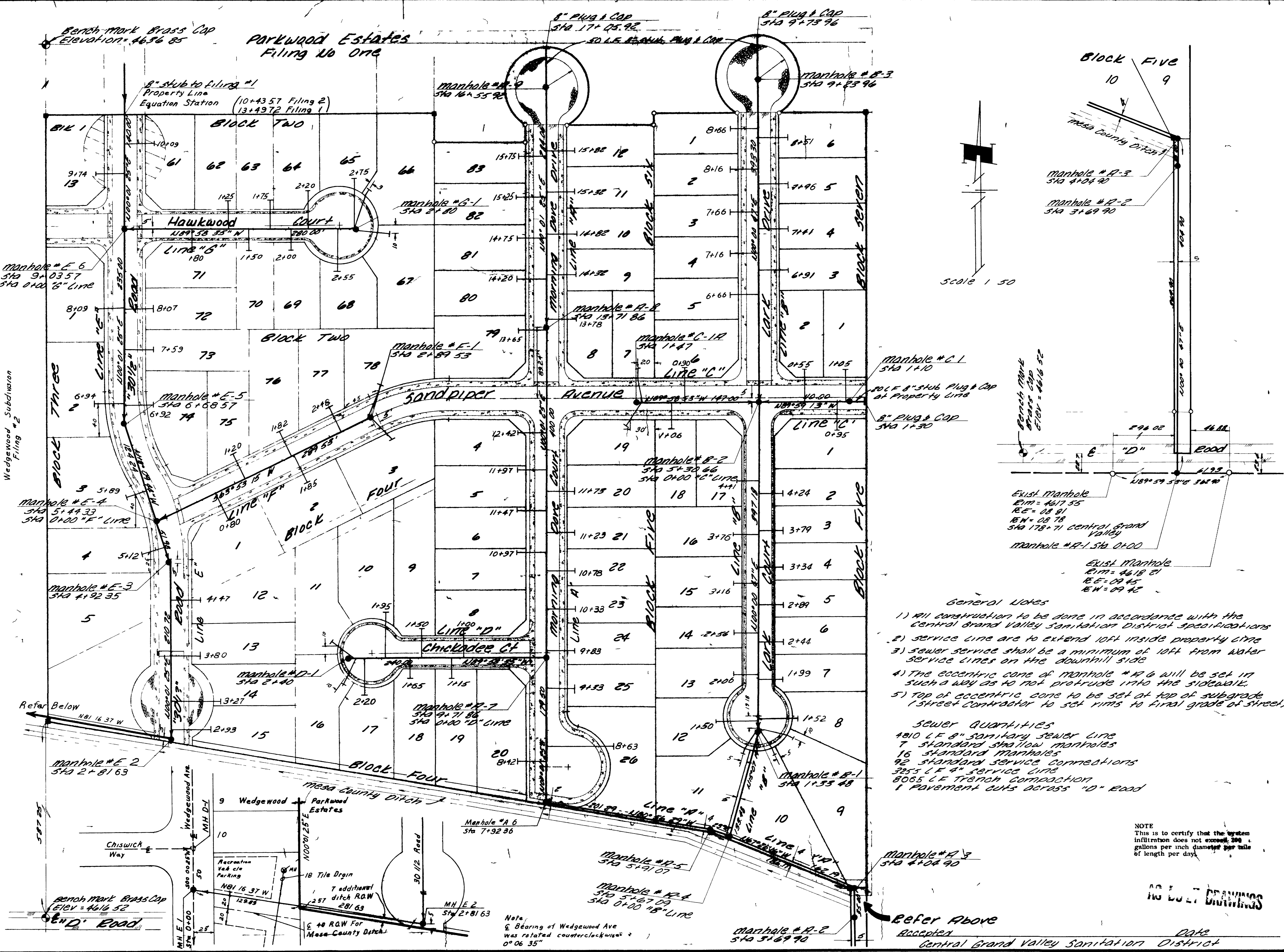
CHECKED	
LDC	
DATE	
March 1980	
SCALE	
As Shown	

REVISIONS	BY
April 24 1980	LDC
6 25 80	LDC



PARKWOOD ESTATES  
 FILING NO TWO  
 MESA COUNTY, COLORADO  
 SANITARY SEWER PLAN

SHEET	1
OF 3 SHEETS	



- General Notes**
- 1) All construction to be done in accordance with the Central Grand Valley Sanitation District specifications
  - 2) service line are to extend 10ft inside property line
  - 3) sewer service shall be a minimum of 10ft from water service lines on the downhill side
  - 4) The eccentric cone of manhole #A-6 will be set in such a way as to not protrude into the sidewalk.
  - 5) Top of eccentric cone to be set at top of subgrade (Street Contractor to set rims to final grade of street)

**Sewer Quantities**  
 4810 LF 8" Sanitary sewer line  
 7 standard shallow manholes  
 16 standard manholes  
 92 standard service connections  
 325 LF 4" service line  
 8065 LF Trench compaction  
 1 Pavement cuts across "D" Road

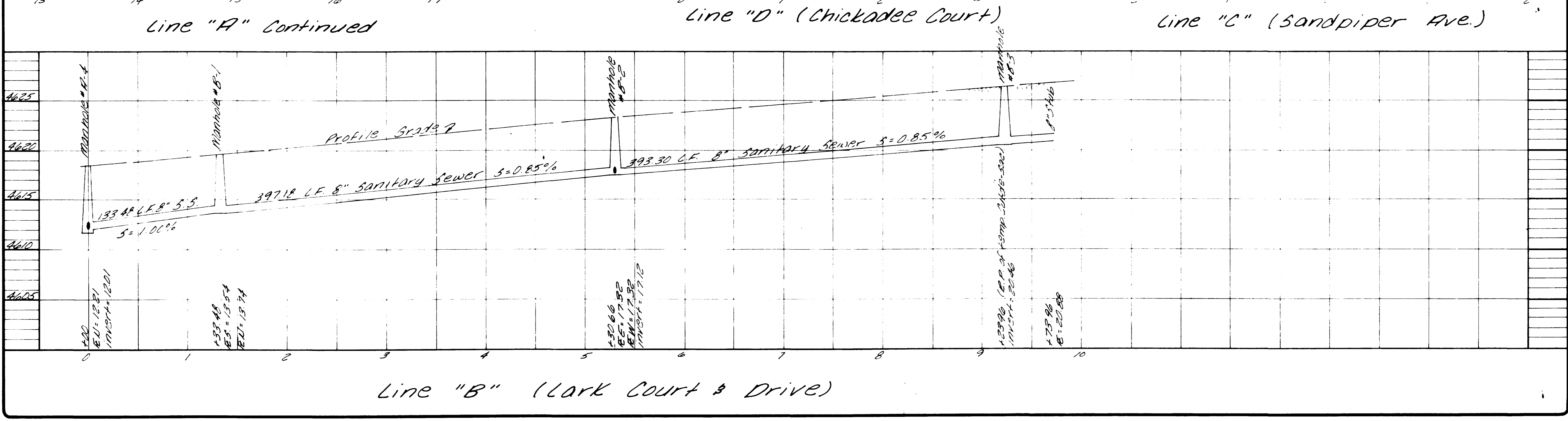
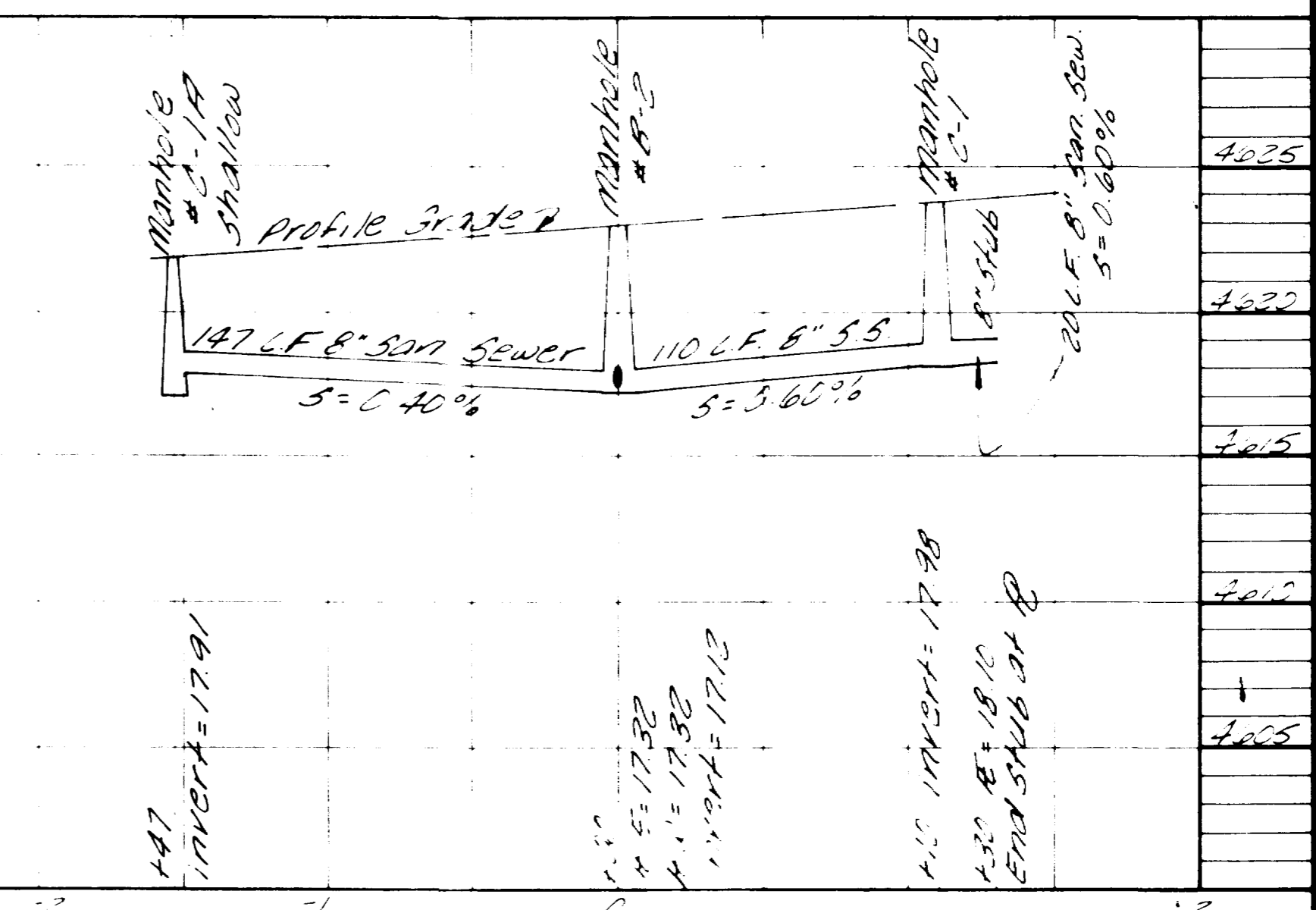
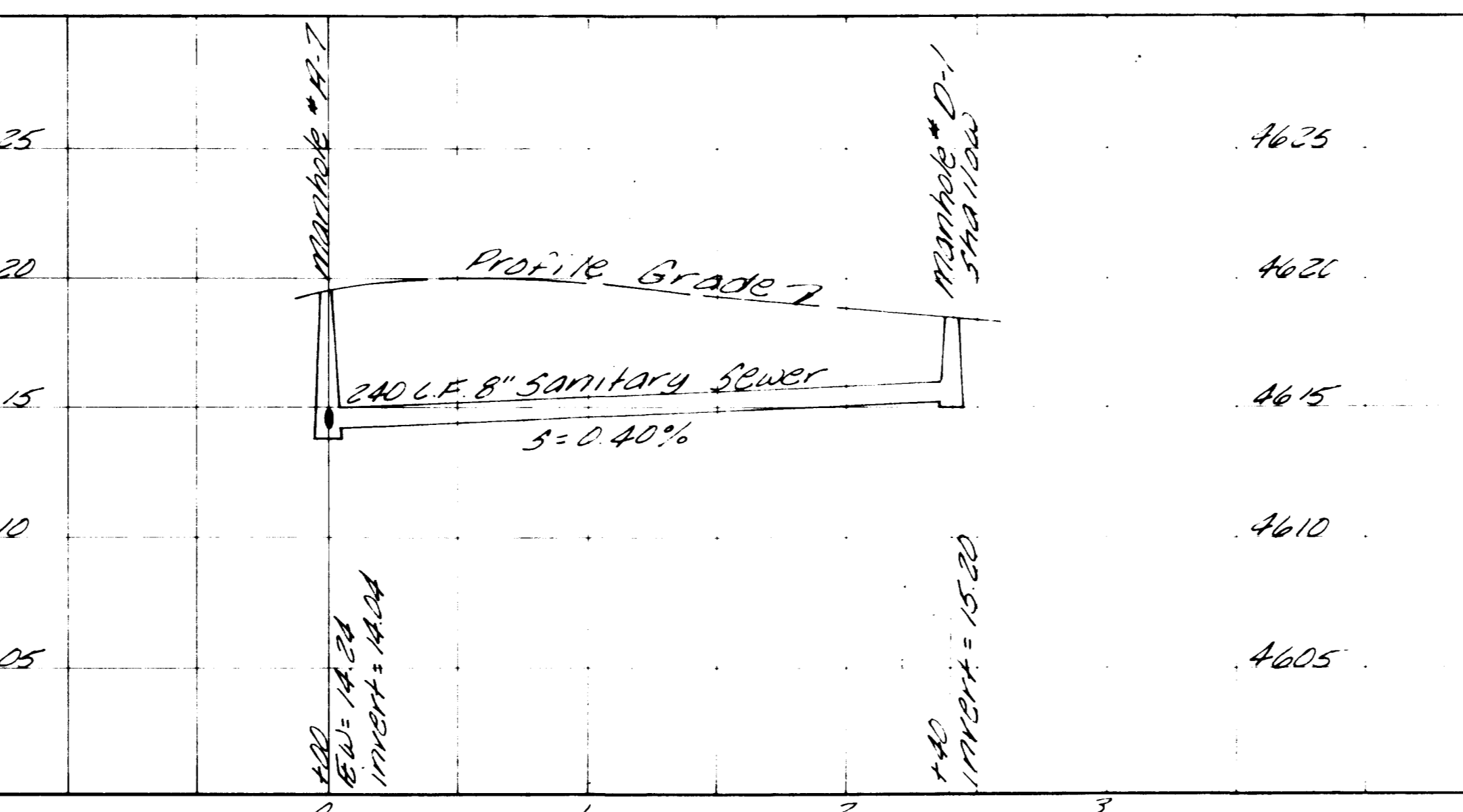
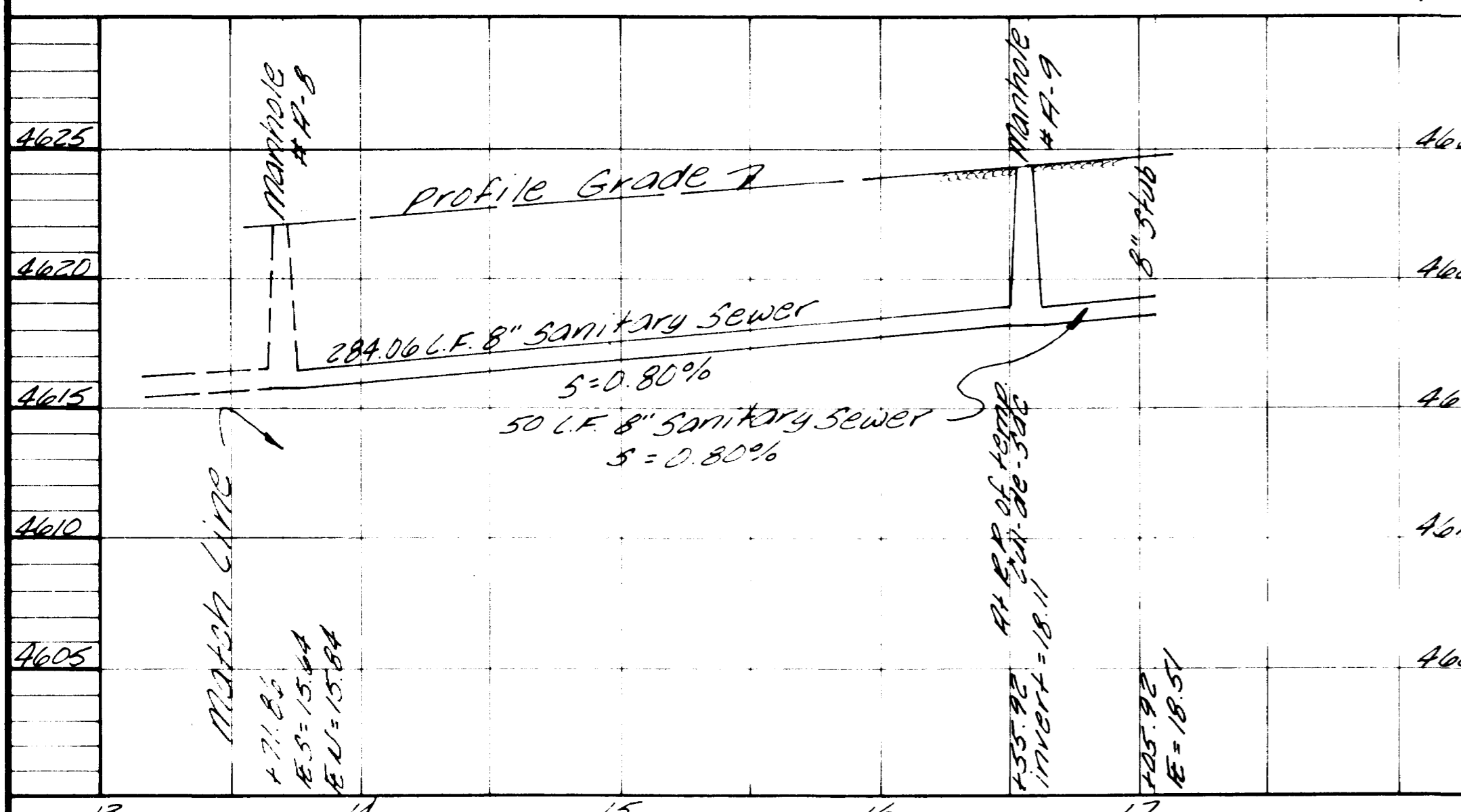
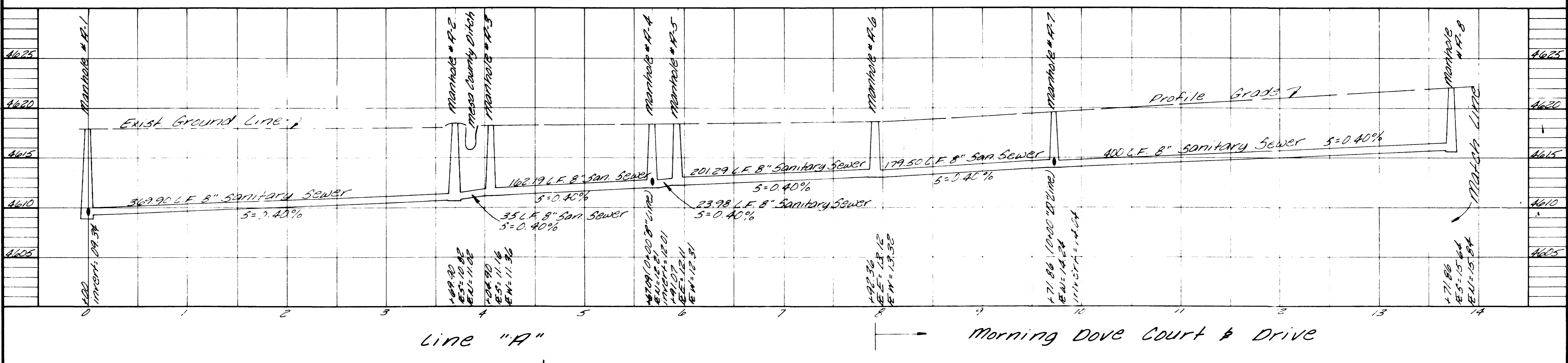
NOTE  
 This is to certify that the system infiltration does not exceed 200 gallons per inch diameter per mile of length per day

Refer Above  
 Accepted  
 Central Grand Valley Sanitation District

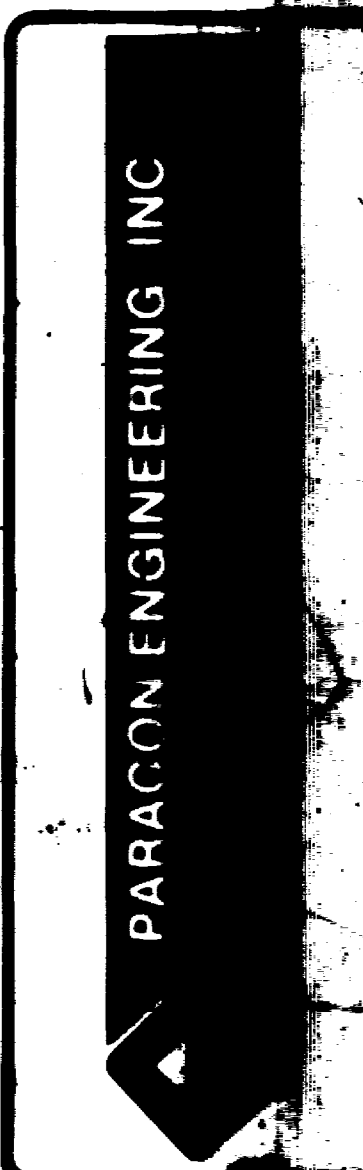
NO BUILT DRAWINGS

REVISIONS	BY

**PARAGON ENGINEERING, INC.**  
P.O. Box 2872  
Grand Junction, Colorado 81501 (303) 243-8988



PARKWOOD ESTATES  
Filing No. TWO  
Mesa County, Colorado  
Sanitary Sewer Profiles



Parkwood Estates  
 Filing No. Two  
 Mesa County, Colorado  
 Sanitary Sewer Profiles

