

SEWER QUANTITIES

8" Sewer Pipe 1950.1 LF
 8" x 4" Wyes 133 ea
 4" Sewer Pipe 4550 LF
 Shallow MH 15 ea
 Standard MH 2 ea
 MH Cover existing sewer line 1 ea
 Fluvient Replacement 22 LF
 Ditch Crossing 1 ea

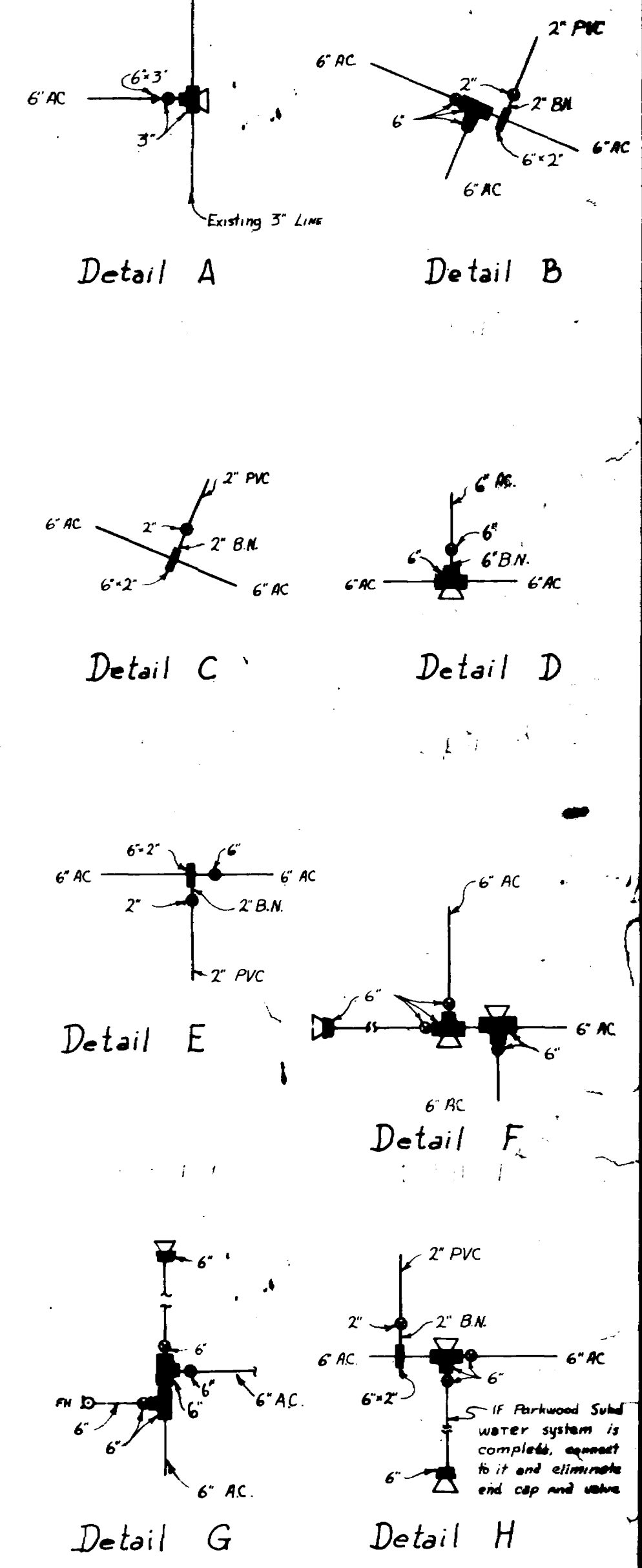
WATER QUANTITIES

6" Water line 924 LF
 2" Water line 1244 LF
 1/2" Service Connections 183 ea
 Firehydrants 9 ea

Sewage collection system shall be constructed in accordance with the policies and specifications of the Central Grand Valley Sanitation District.

Water distribution system shall be constructed in accordance with the policies and specifications of the Clifton Water District.

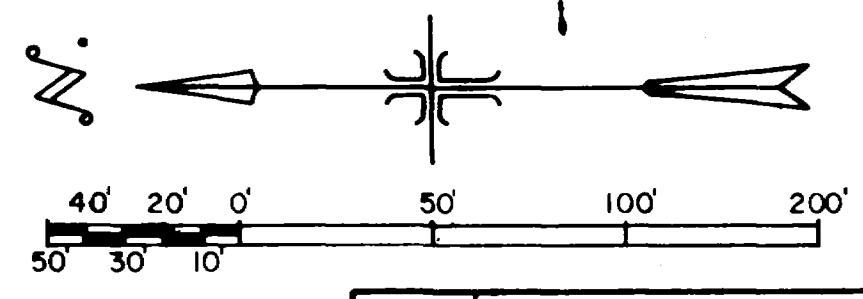
Connect to Parkwood Subd. Water System if it is in.



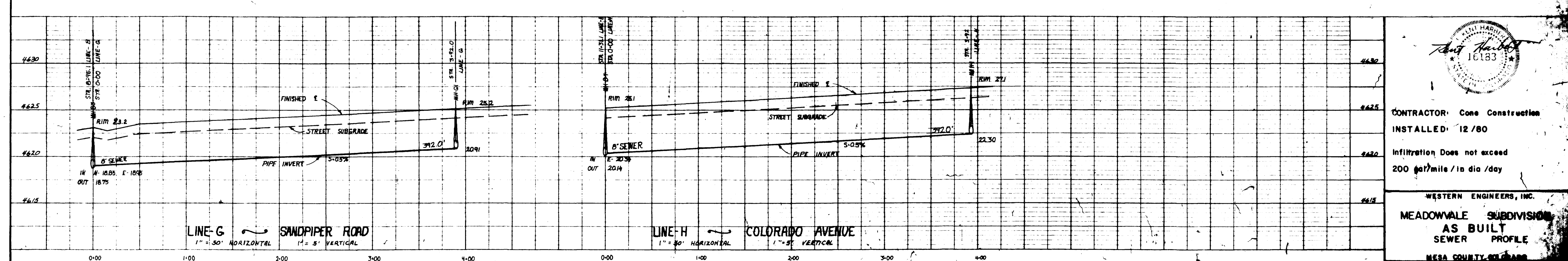
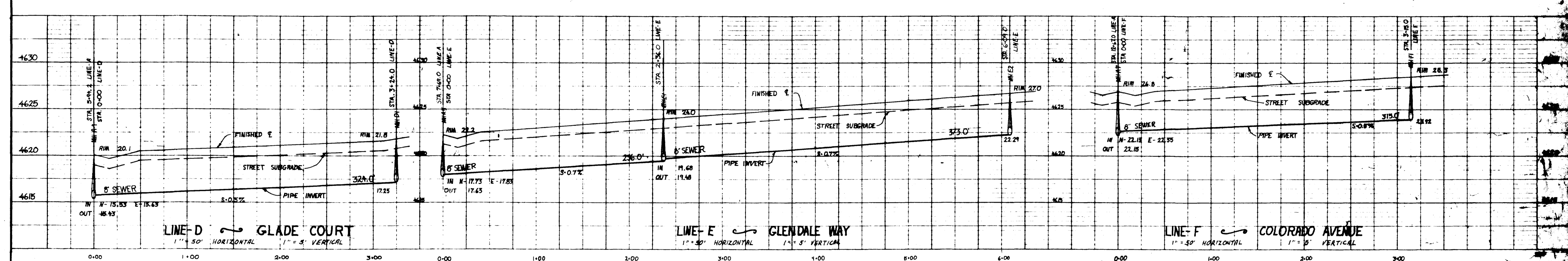
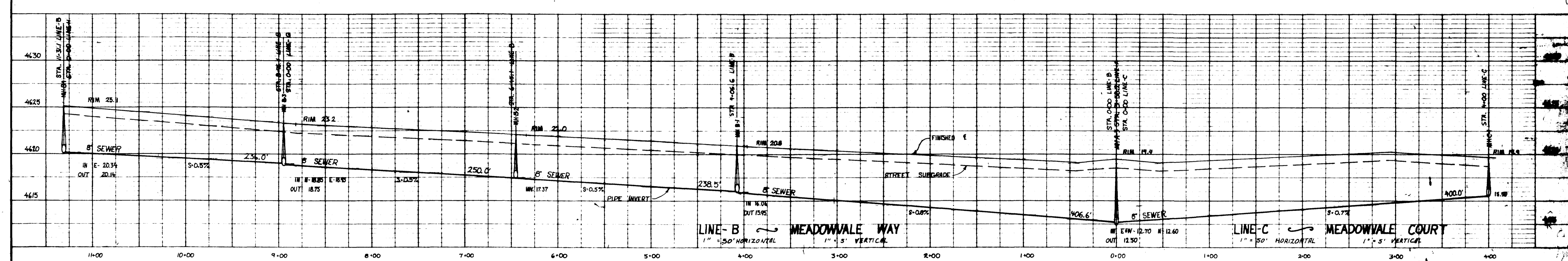
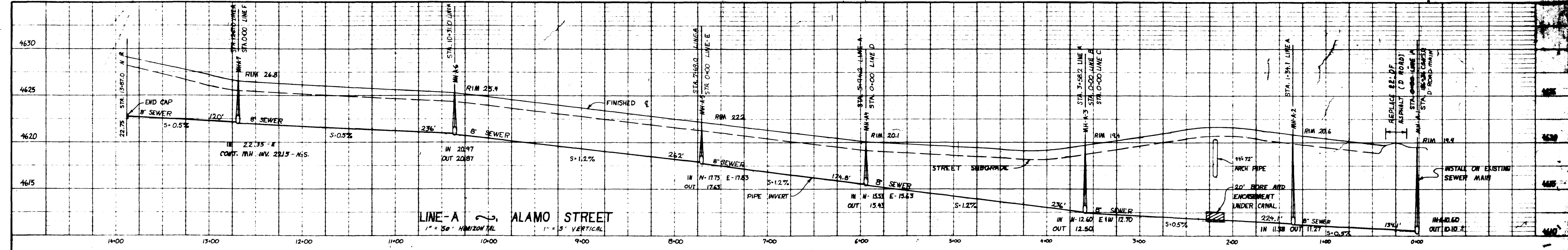
LEGEND


- 8" sewer main and manhole (on or S or W of E)
- 4" sewer tap with distance from property corner (or adjacent water tap) and station of connection on the sewer main. Taps extend 10' into property.
- Fire Hydrant (6")
- Water main and size (12" N or E of E).
2" Copper Water Tap to common meter at Property Line.

- TEE
- 90° ELBOW
- REDUCER
- TAPPED COUPLING
- GATE VALVE
- CONCRETE THRUST BLOCK
- END CAP
- B.N. BRASS NIPPLE



WESTERN ENGINEERS, INC.
AS BUILT
MEADOWVALE SUBDIVISION
 SEWER & WATER PLAN
 MESA COUNTY, COLORADO
 ENGINEER: T.K.H. DRAWN: D.L.H. CHECK: GRAND DIVISION DWG: 2737-97




 CONTRACTOR: Cone Construction
 INSTALLED: 12 / 80
 Infiltration Does not exceed
 200 gal/mile / in dia / day
 WESTERN ENGINEERS, INC.
 MEADOWVALE SUBDIVISION
 AS BUILT
 SEWER PROFILE
 MESA COUNTY SO. GRAB
 CHECKED: T.K.H. DATE: DLK
 GRAN JUSTICE ENG. INC. 2727-222-2