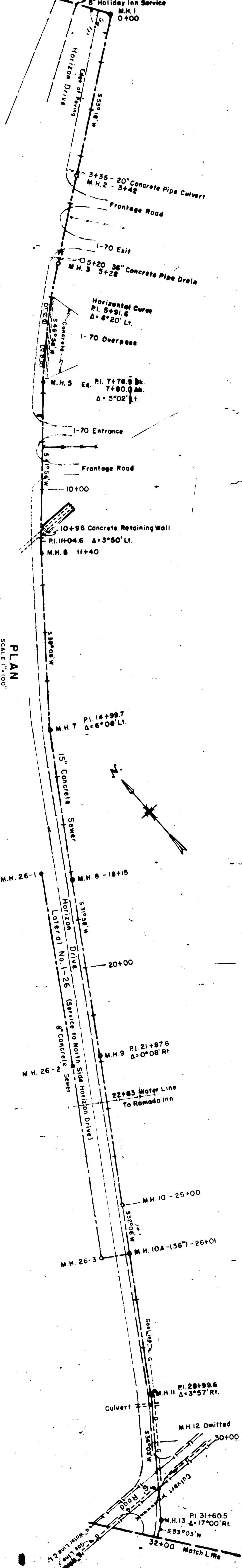
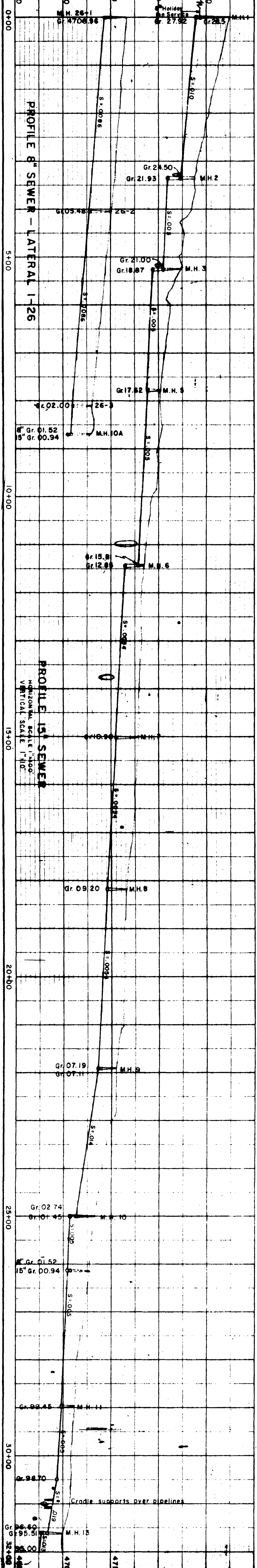
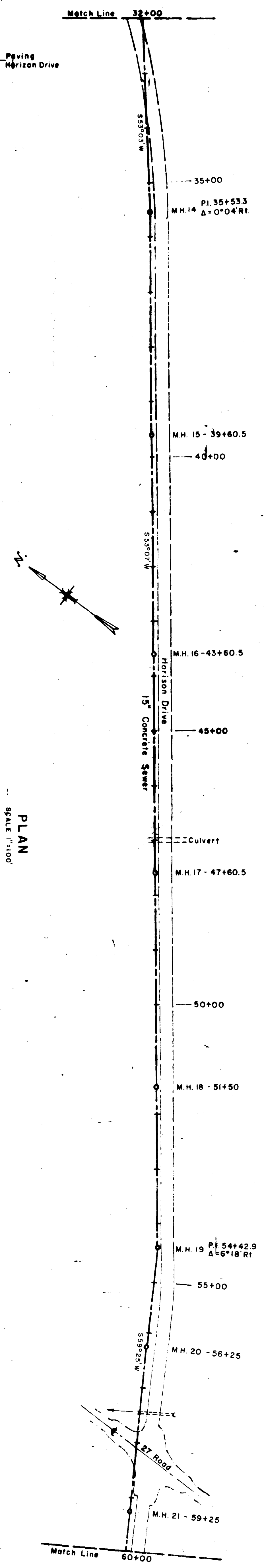
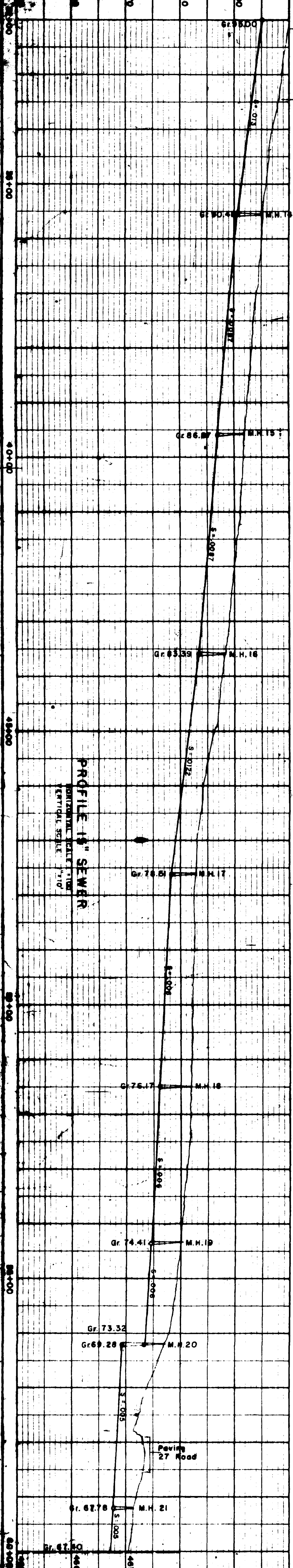


HORIZONTAL SCALE 1"=100' VERTICAL SCALE 1"=10'

WESTERN ENGINEERS, INC. PLAN & PROFILE	
SANITARY SEWER LATERAL 1-26	
HORIZON DRIVE COMMERCIAL AREA SYSTEM	
CITY OF GRAND JUNCTION	
MESA COUNTY, COLORADO	
SURVEYED	W.Q.
DESIGNED	R.J.M.
DRAWN	R.J.M.
CHECKED	R.J.M.
GRAND JUNCTION, COLO. 1/26/66 DWG. No. 1-98-20	



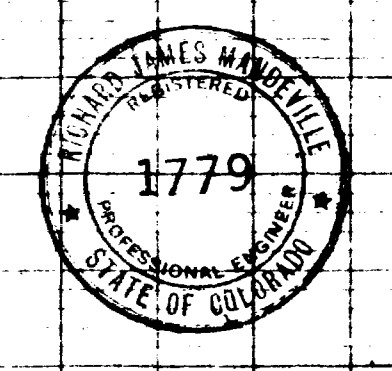
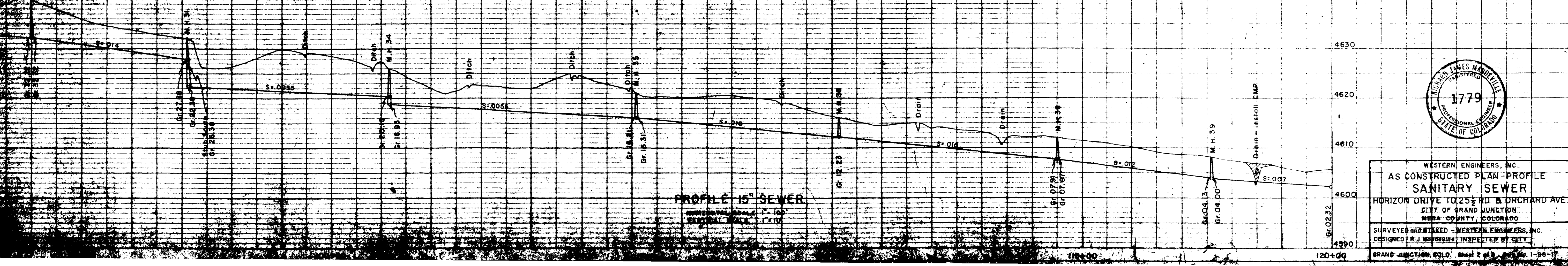
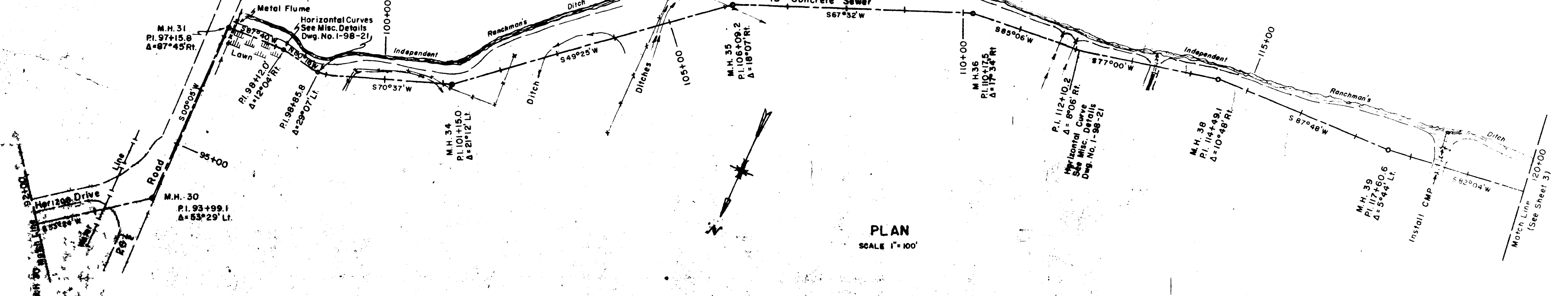
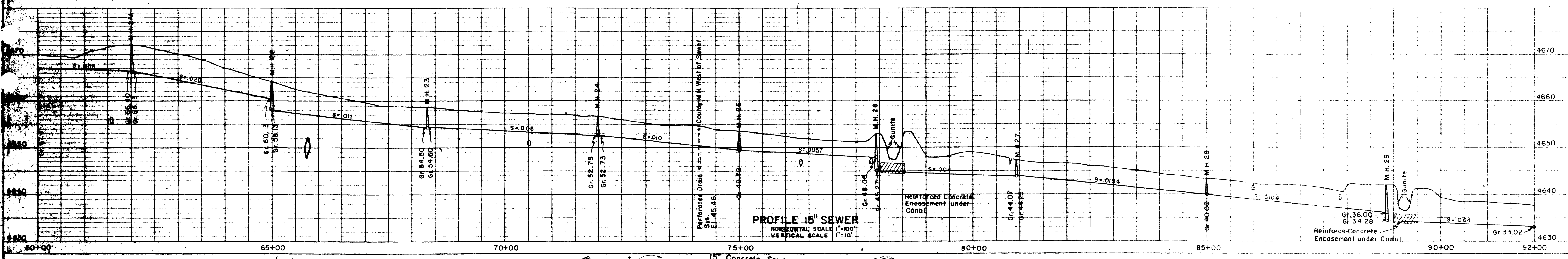
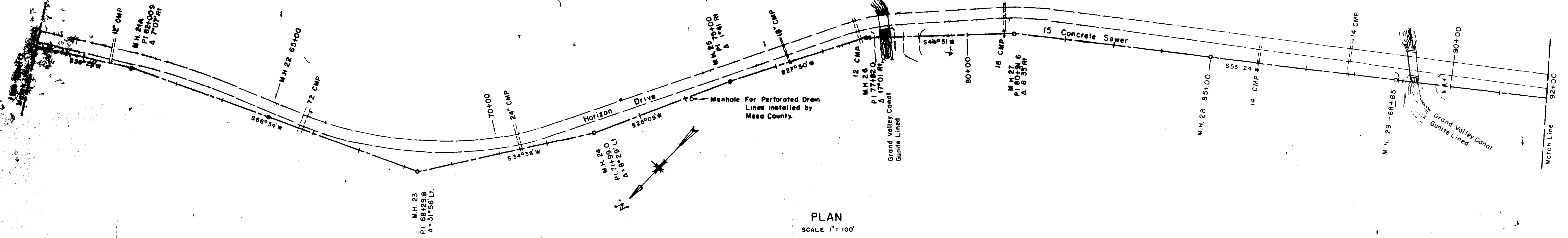
AS CONSTRUCTION PROJECTS, INC.
SANITARY SEWER

DATE: 10-25-85
 DESIGNED BY: J. S. B. JR.
 CHECKED BY: J. S. B. JR.
 DATE: 12-17-85
 REVISIONS: 1-1-86

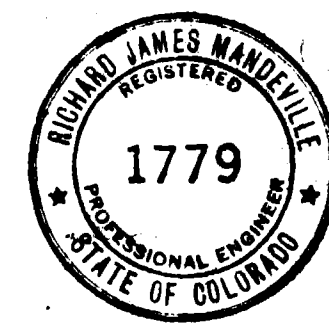
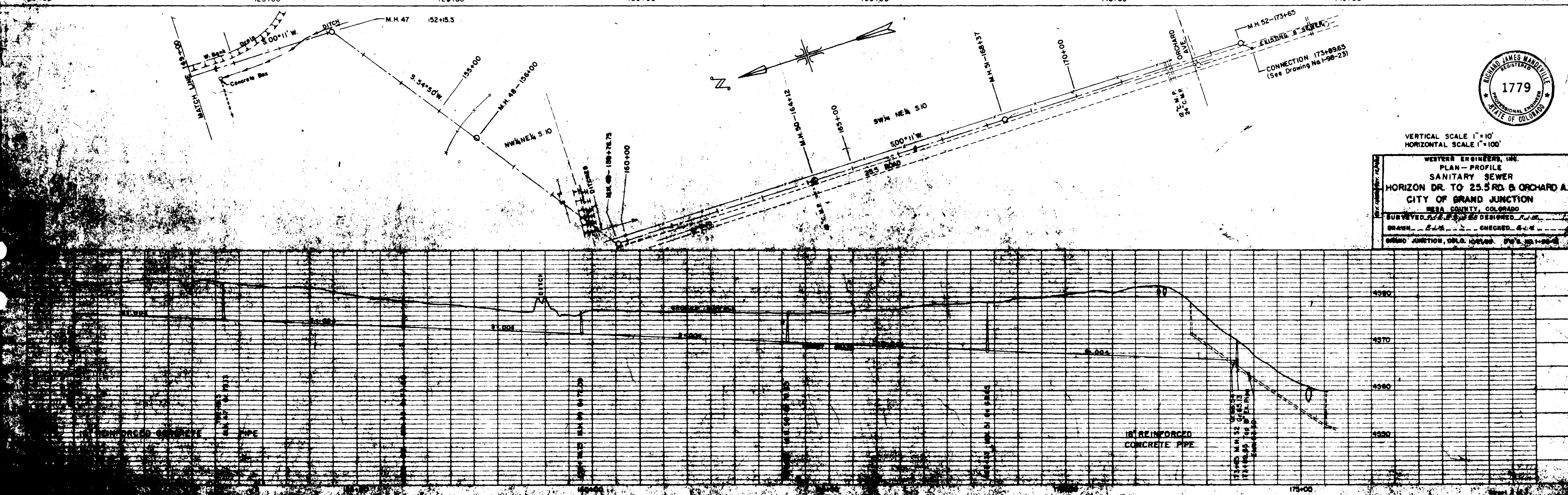
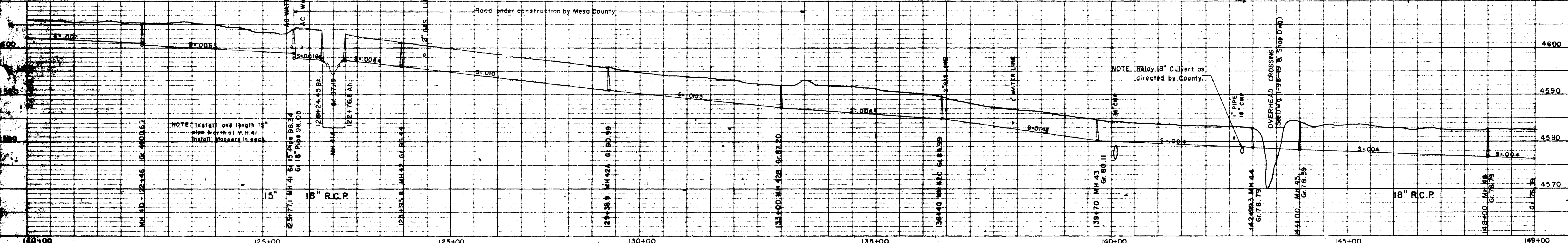
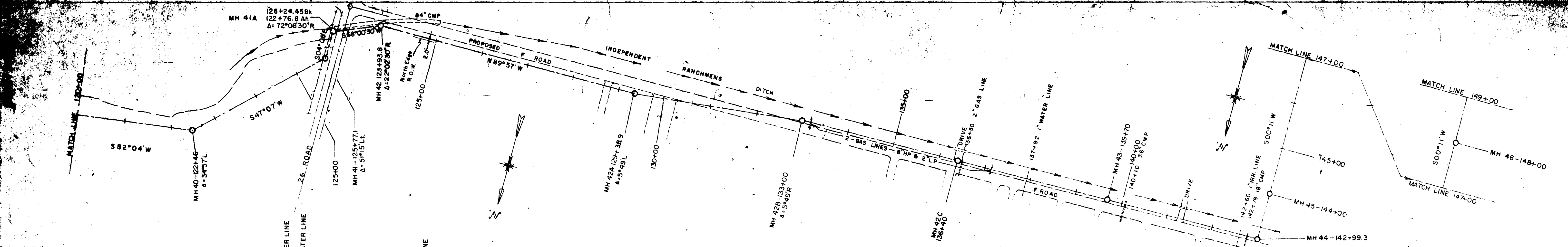
REFERENCE DRAWINGS
 M.S.E. 1-98-85
 M.S.E. 1-99-85
 M.S.E. 1-100-85

DATES
 10-25-85
 12-17-85
 1-1-86

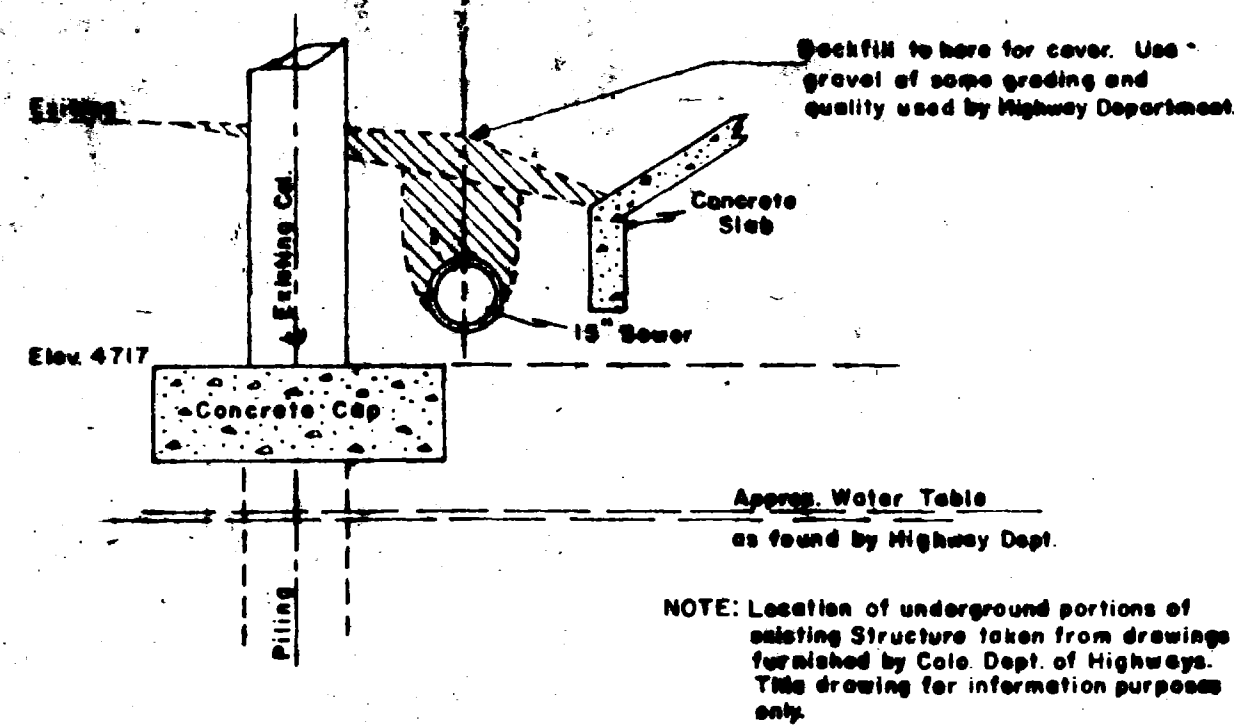
SEAL
 REGISTERED PROFESSIONAL ENGINEER
 STATE OF TEXAS
 NO. 1779



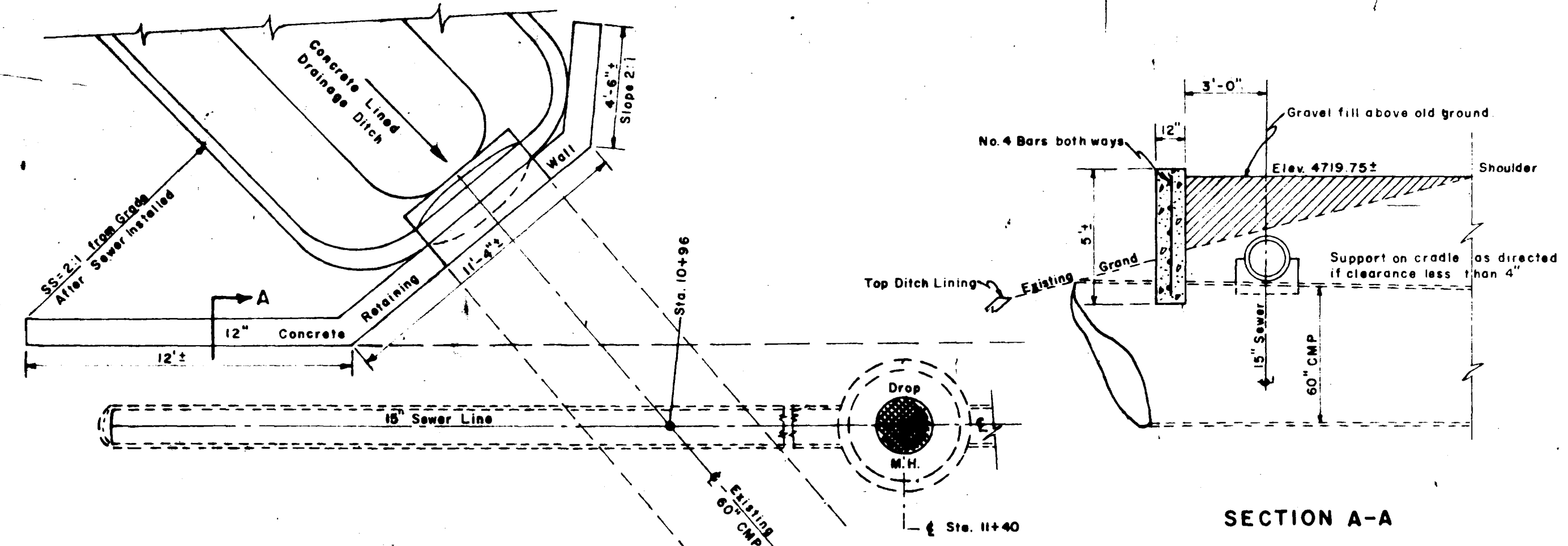
WESTERN ENGINEERS, INC.
AS CONSTRUCTED PLAN - PROFILE
SANITARY SEWER
HORIZON DRIVE TO 25th RD. & ORCHARD AVE
CITY OF GRAND JUNCTION
MESA COUNTY, COLORADO
SURVEYED AND TAKEN - WESTERN ENGINEERS, INC.
DESIGNED - R.J. [unreadable] INSPECTED BY CITY
GRAND JUNCTION, COLO. Sheet 2 of 3 1-36-17



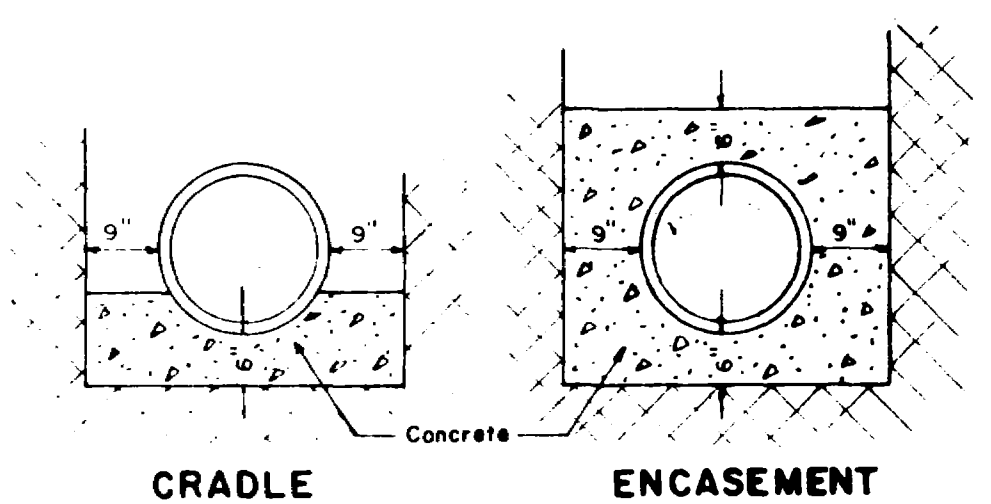
WESTERN ENGINEERS, INC.
 PLAN - PROFILE
 SANITARY SEWER
 HORIZON DR. TO 25.5 RD. & ORCHARD A.
 CITY OF GRAND JUNCTION
 MESA COUNTY, COLORADO
 SURVEYED BY J. J. ... DESIGNED BY J. J. ...
 DRAWN BY ... CHECKED BY ...
 GRAND JUNCTION, COLO. 10/1/00 P.S. 1-98-23



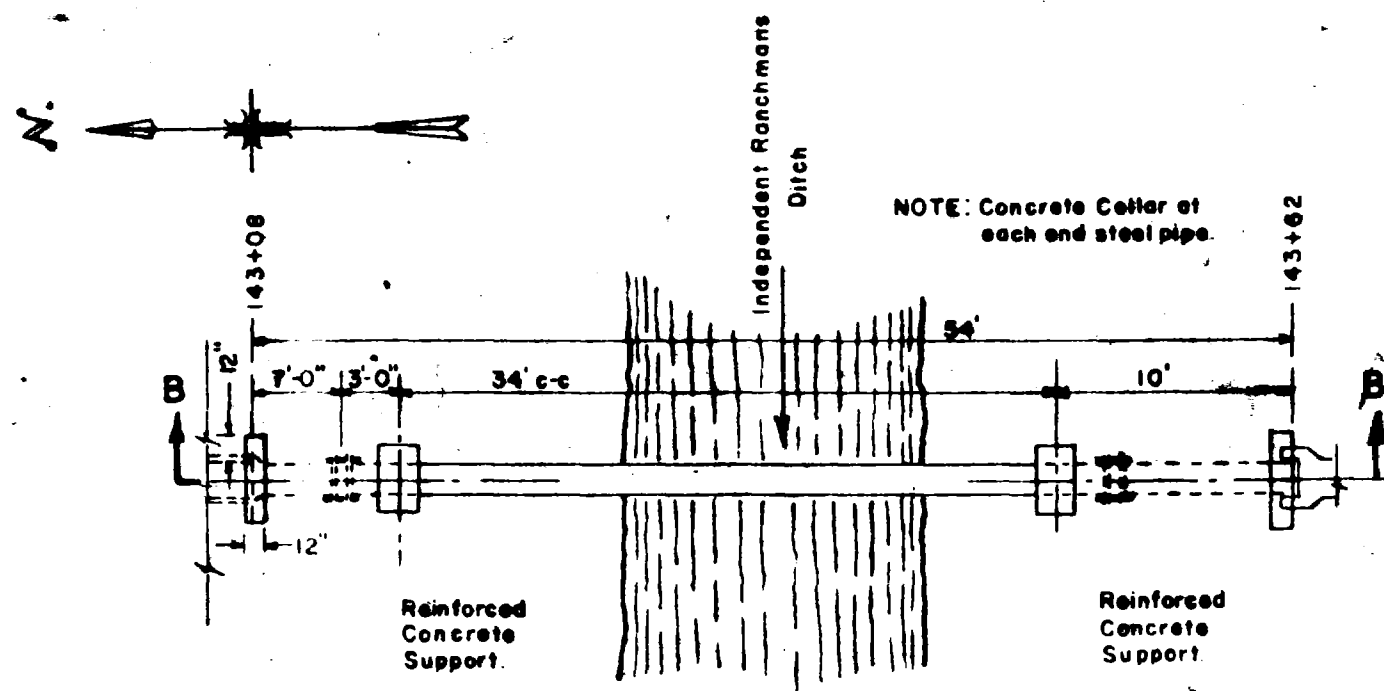
**TYPICAL SECTION
UNDER I-70 OVERPASS STA. 7+40**
SCALE 1"=4'-0"



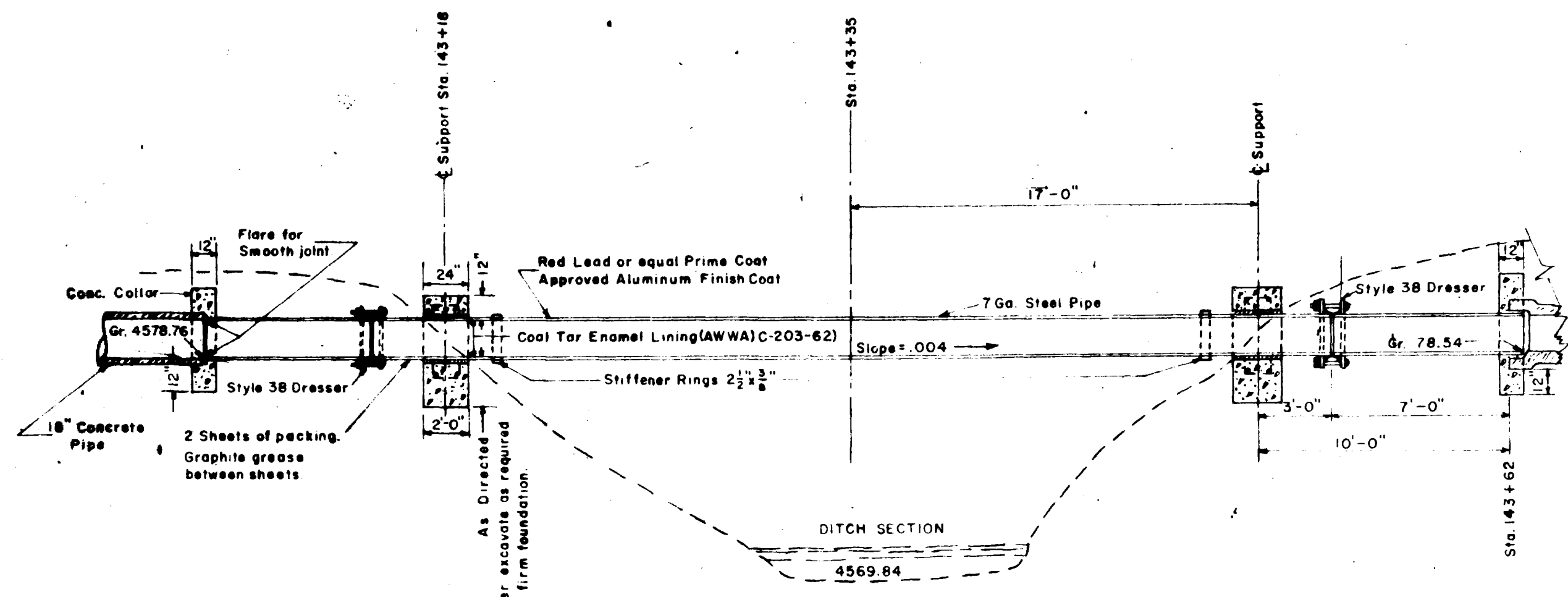
DETAIL - DRAINAGE CROSSOVER STA. 10+96
SCALE 1"=4'-0"



TYPICAL BEDDING DETAILS

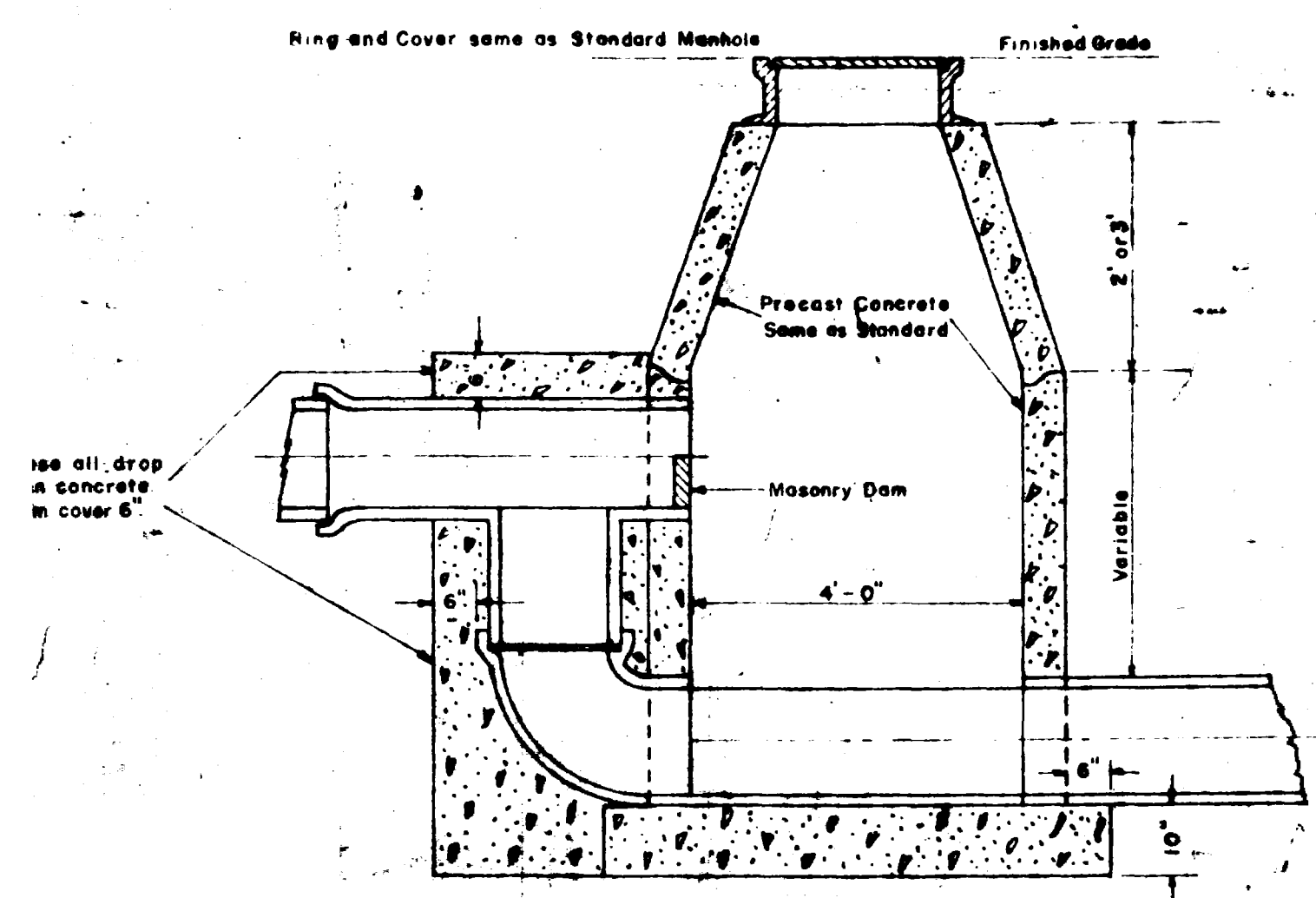


PLAN
SCALE 1"=10'-0"

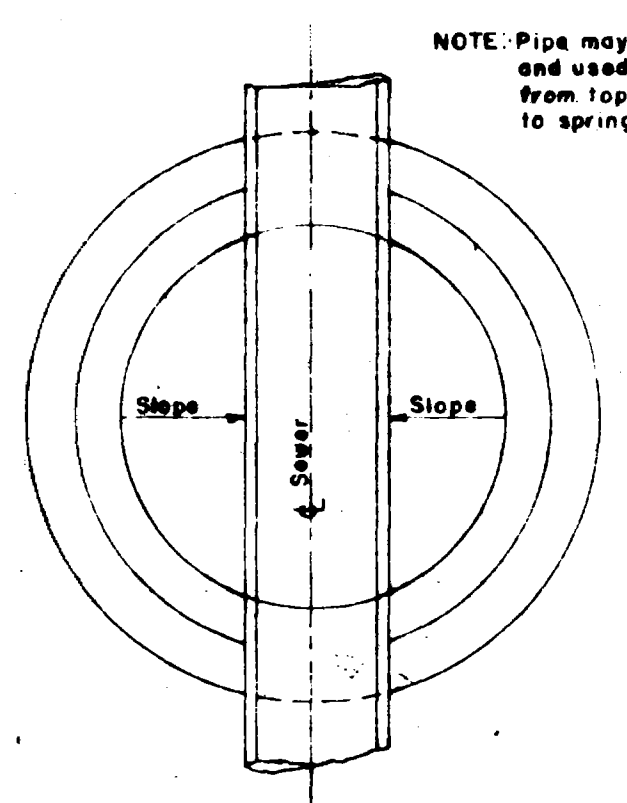


SECTION B-B
SCALE 1"=5'-0"

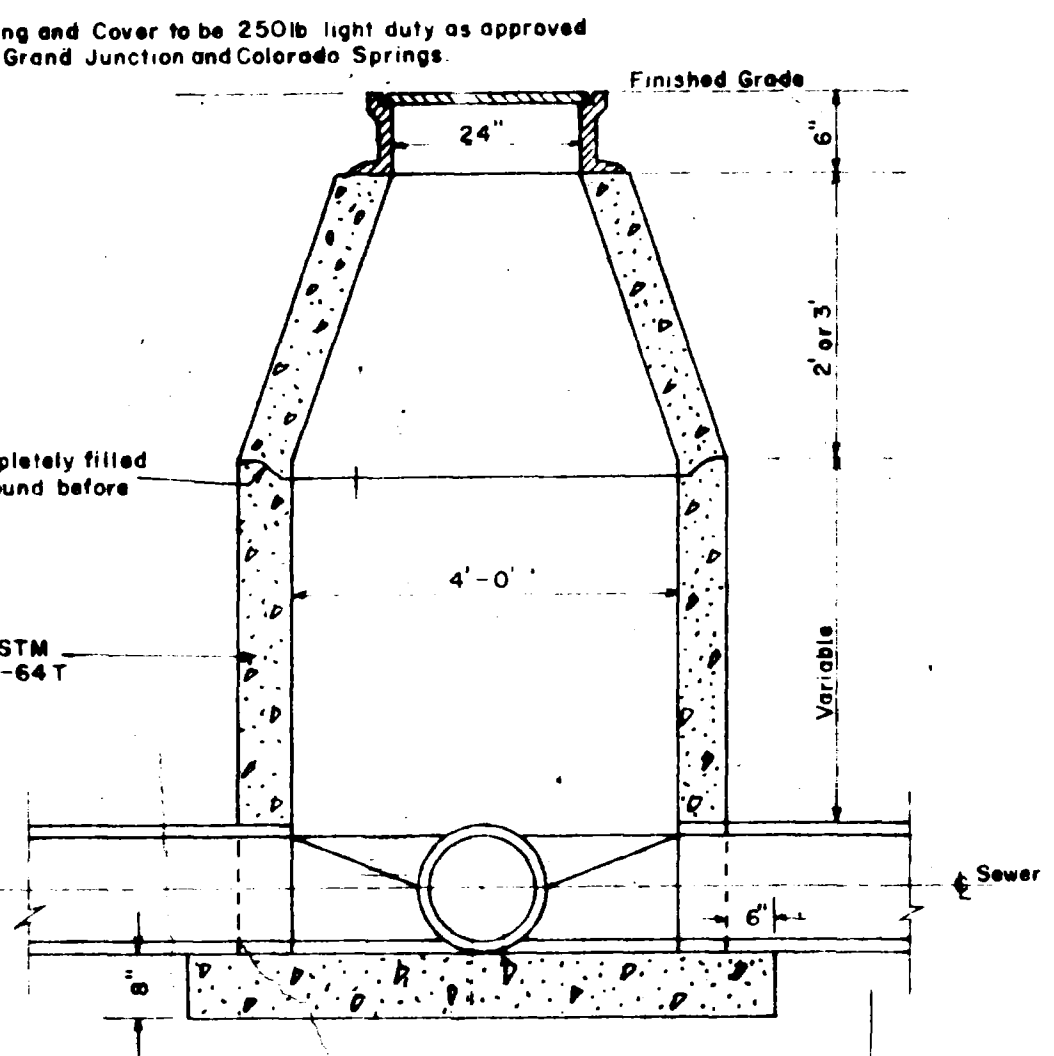
**OVERHEAD CROSSING - INDEPENDENT RANCHMANS DITCH
STA. 143+08 TO 143+62**



DROP MANHOLE

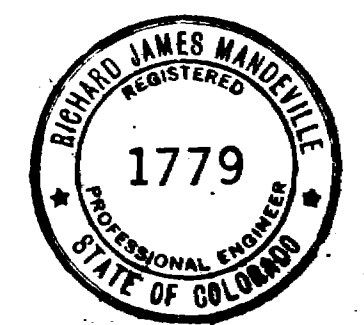


MANHOLE BASE

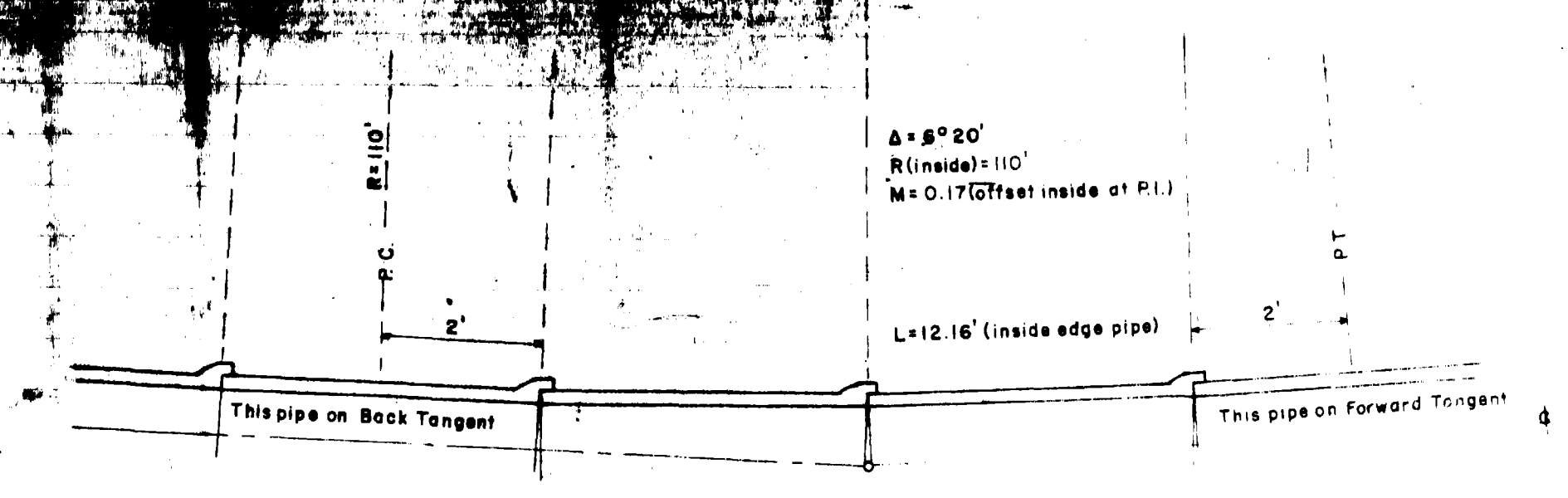


STANDARD MANHOLE

TYPICAL MANHOLES

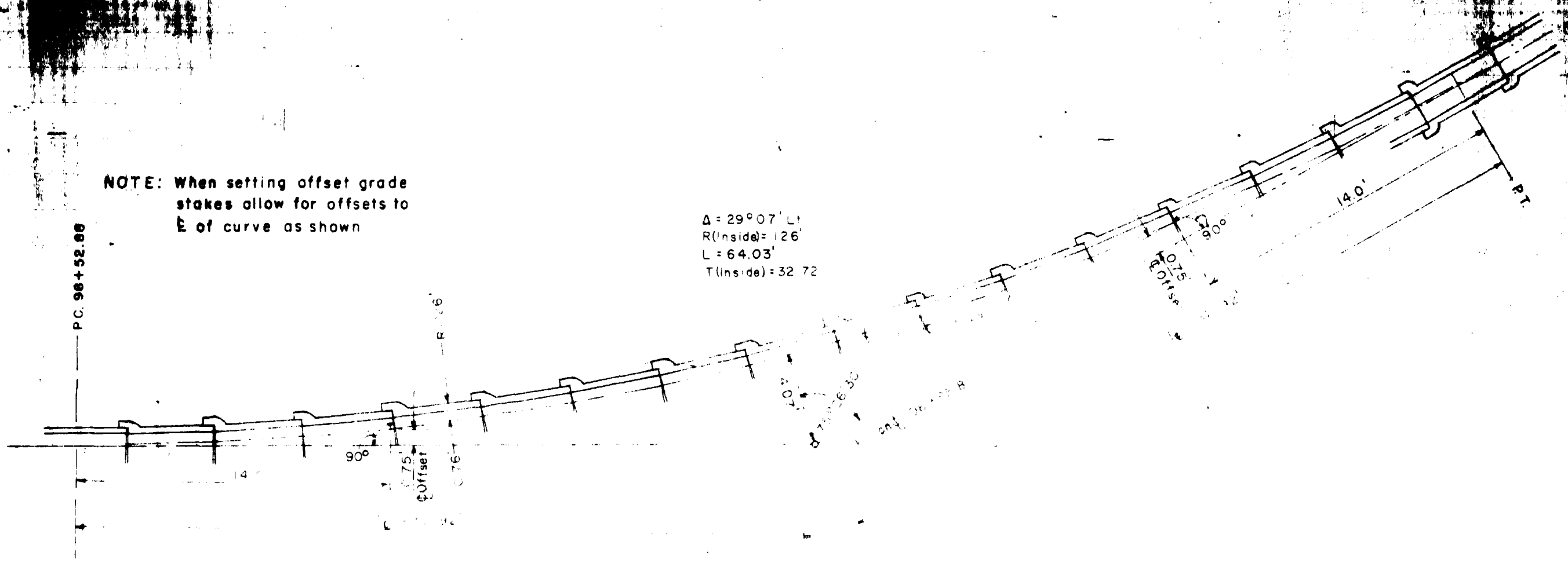


WESTERN ENGINEERS, INC.
MISCELLANEOUS STRUCTURES
SANITARY SEWER
HORIZON DR. TO 25.5 ROAD AND GRAND
CITY OF GRAND JUNCTION
MESA COUNTY, COLORADO
DESIGNED BY [Signature] DRAWN BY [Signature]
GRAND JUNCTION, COLORADO

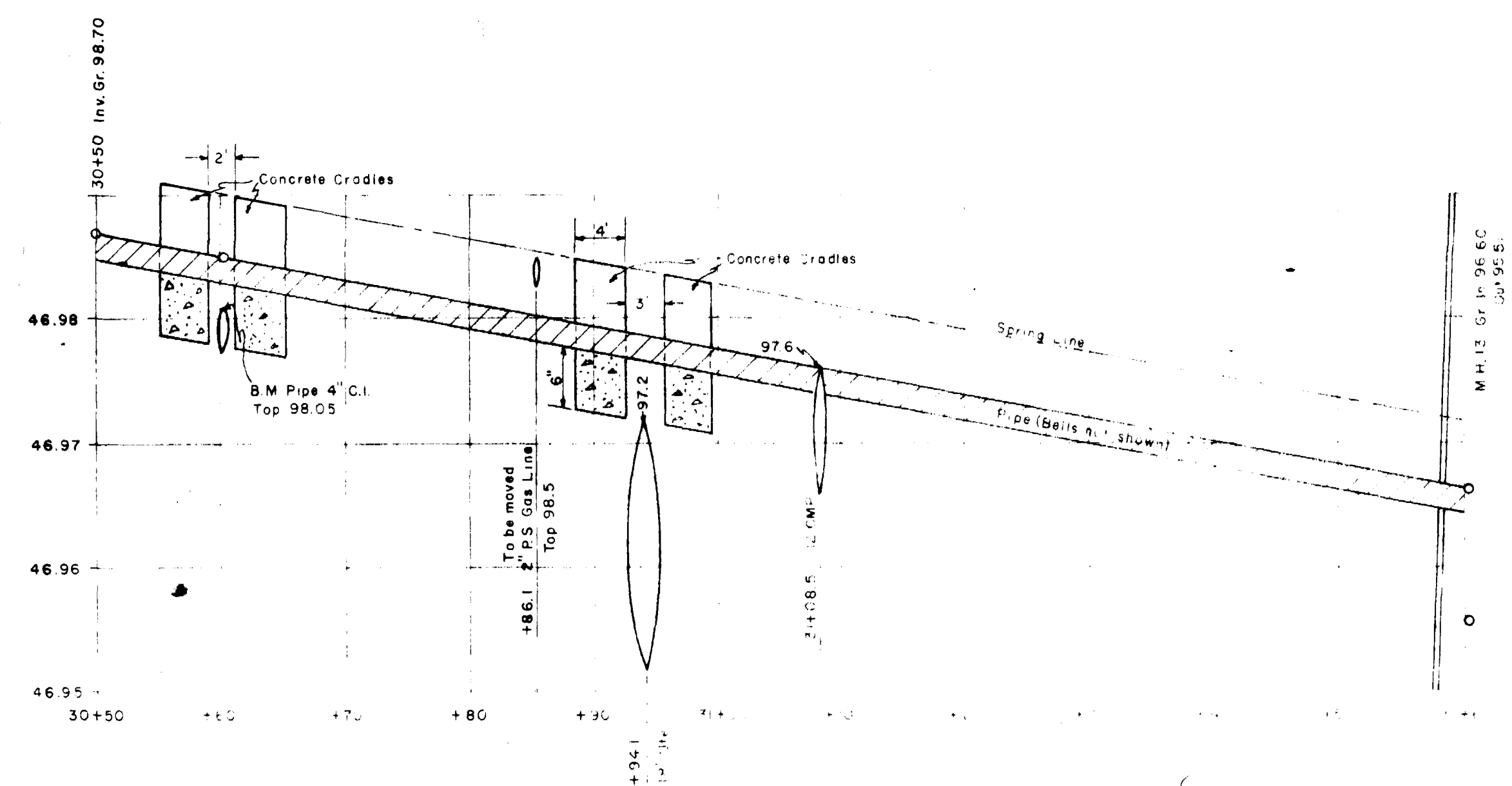


NOTE: When staking for line and grade add or deduct "M" from normal offset distance at P.I. to give permissible angles at 3 joints, as shown.

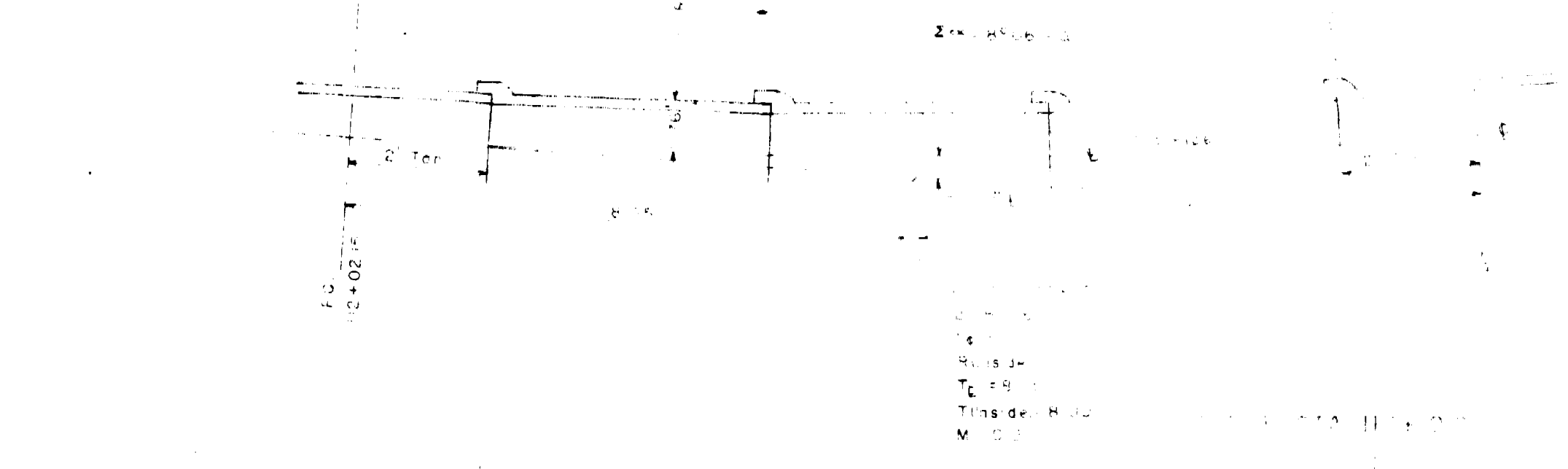
CURVE STA. 5+91.6
SCALE 1" = 2'



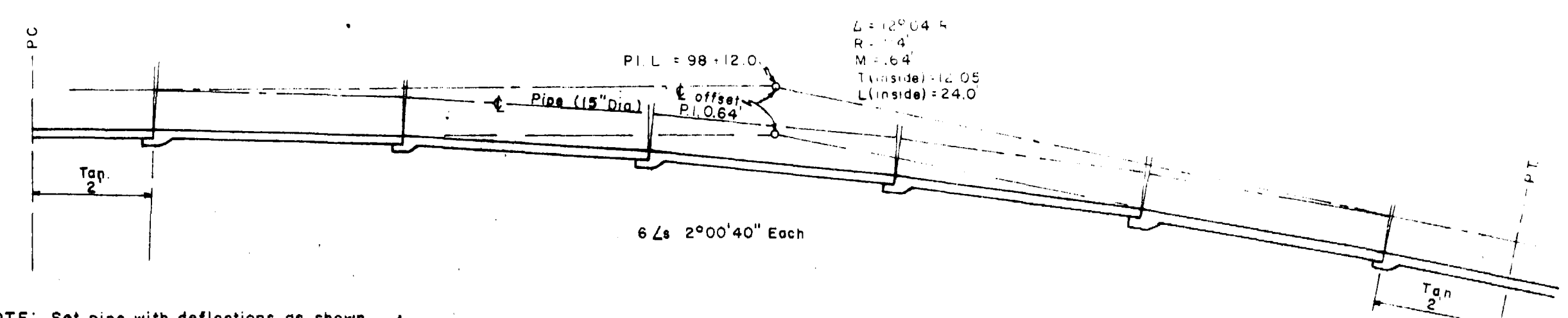
CURVE STA. 98+52.88
SCALE 1" = 2'



DETAILS OF LINE THRU PIPES AT HORIZON DRIVE & G ROAD
SCALES: HORIZONTAL 1" = 10'
VERTICAL 1" = 1'

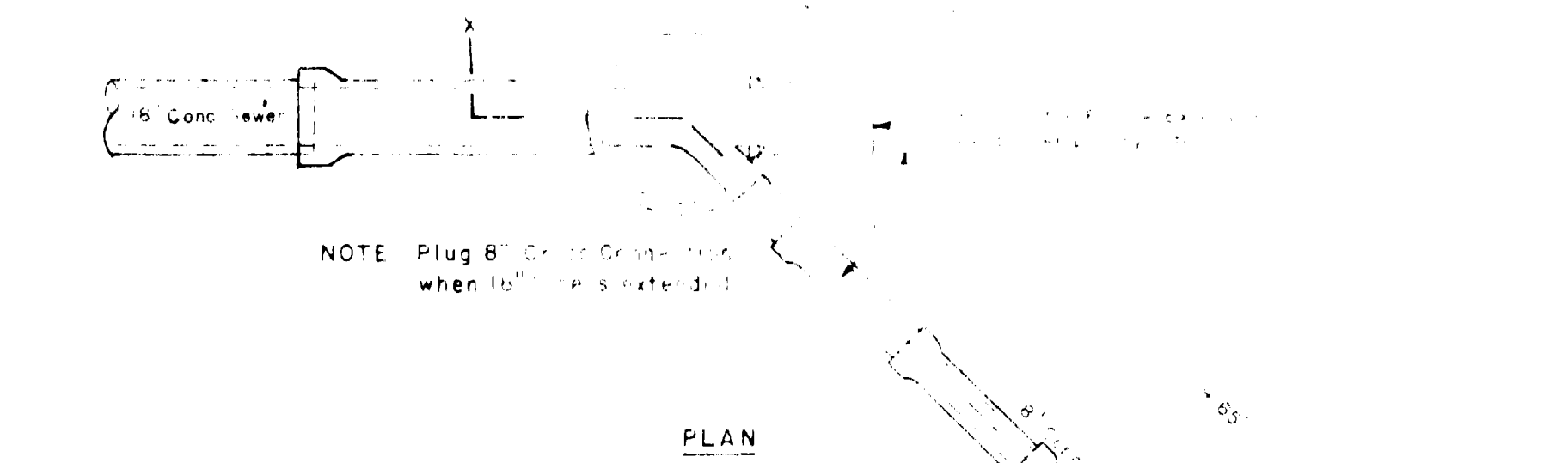


NOTE: Allow for offset P.I. to curve in setting offset grade stakes for construction.



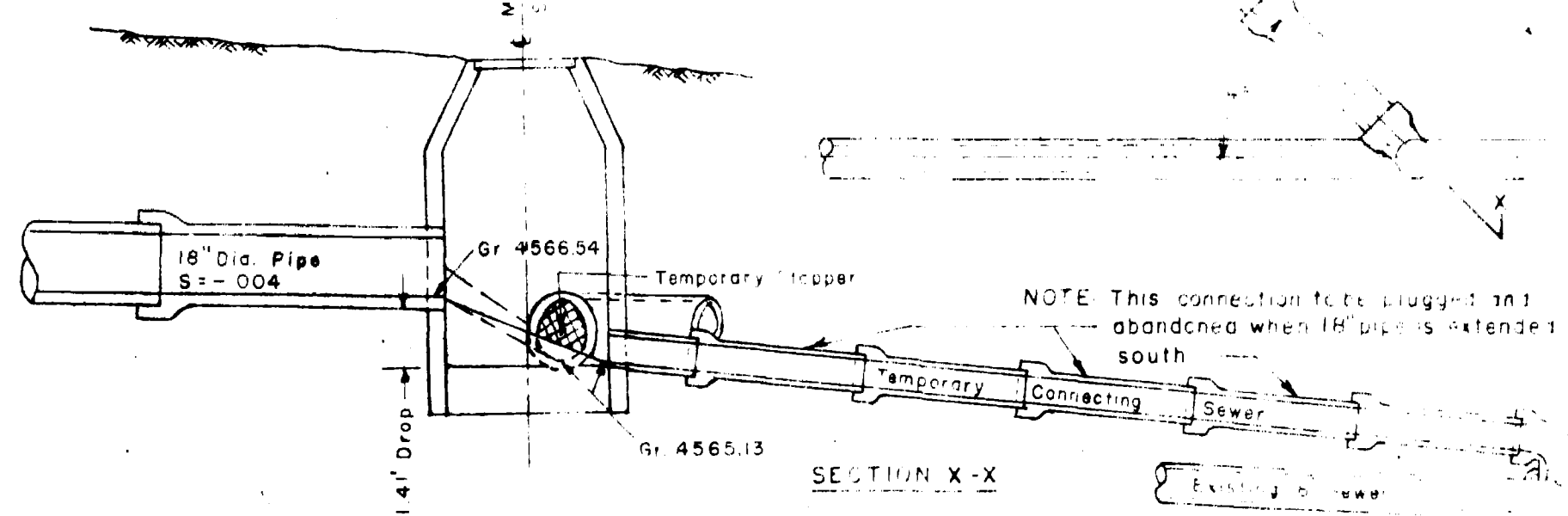
NOTE: Set pipe with deflections as shown. Make allowance in setting offset grade stakes (maximum allowance = 0.64 at P.I.).

CURVE STA. 98+12.0
SCALE 1" = 2'



NOTE: Plug 8" Drain Grate when 18" pipe is extended.

PLAN



CROSS CONNECTION DETAILS
18" SEWER TO 8" SEWER - STA. 173+65
SCALE 1" = 4.0'



WESTERN ENGINEERS, INC.
AS CONSULTED
MISCELLANEOUS DETAILS
SANITARY SEWER
HORIZON DR TO 25.5 ROAD AND ORCHARD AVENUE
CITY OF GRAND JUNCTION
MESA COUNTY, COLORADO
DRAWN BY J.M.M. TRACED BY J.M.M.
GRAND JUNCTION, COLORADO MAY 17, 1988 1-98-21