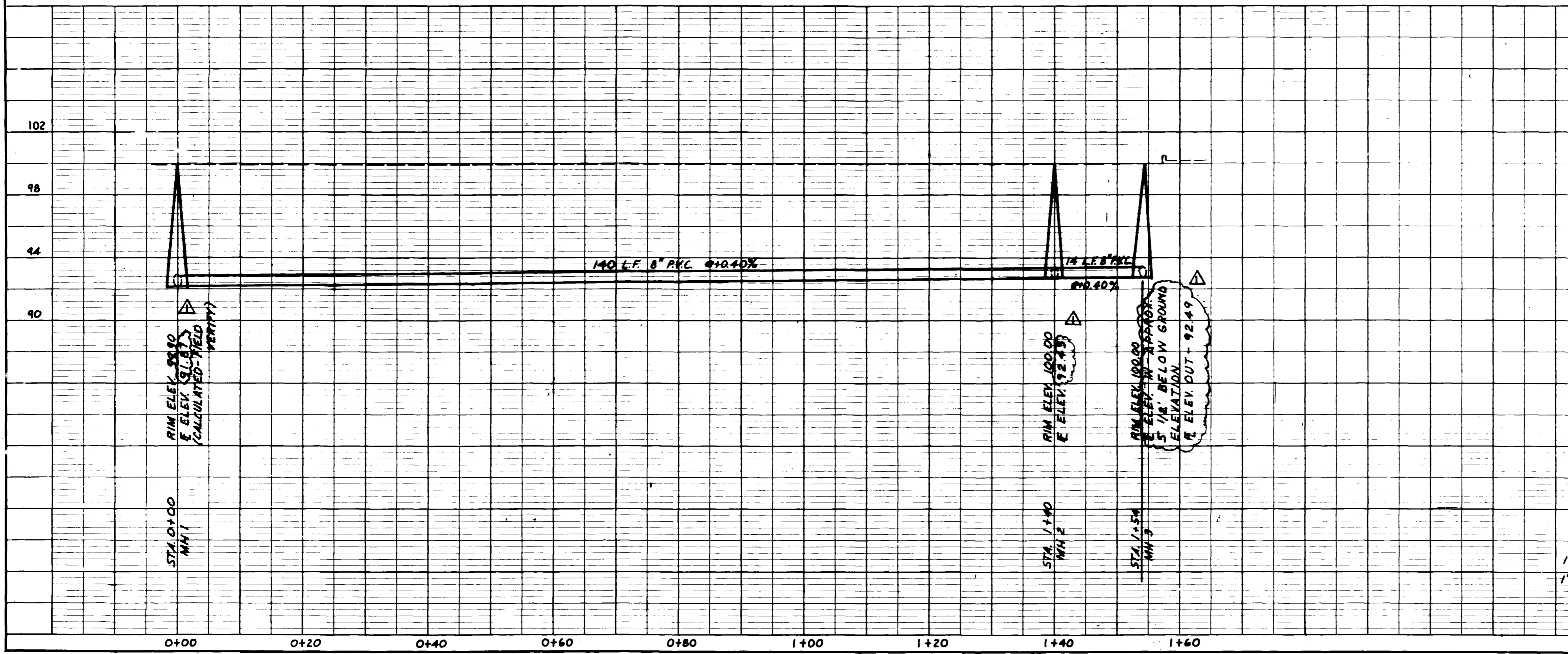
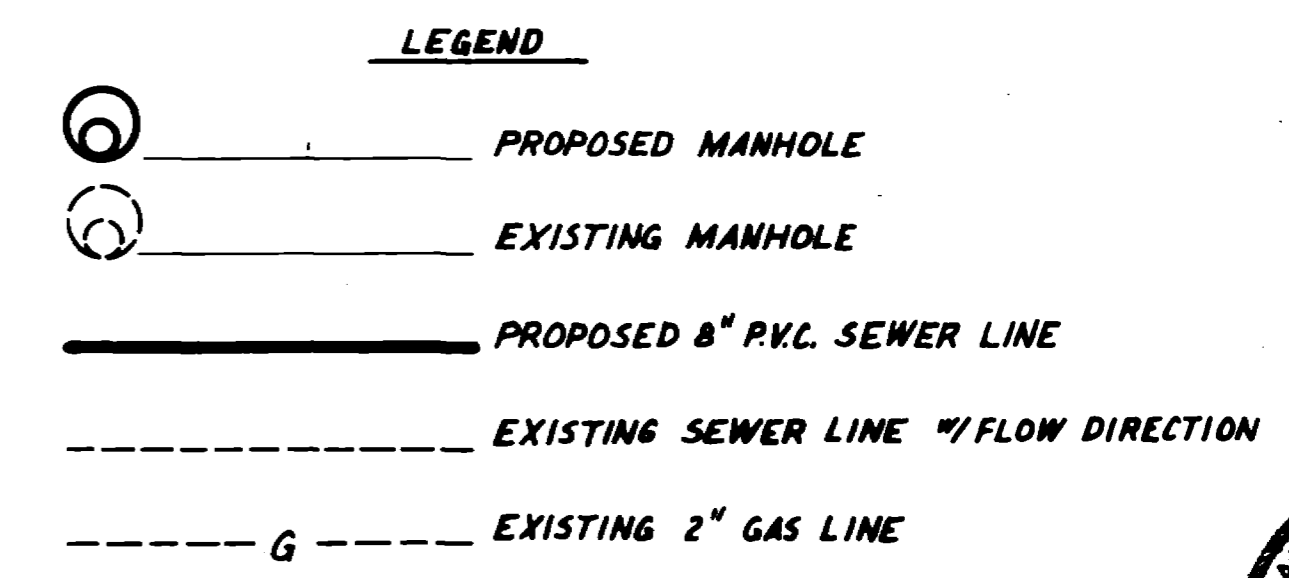
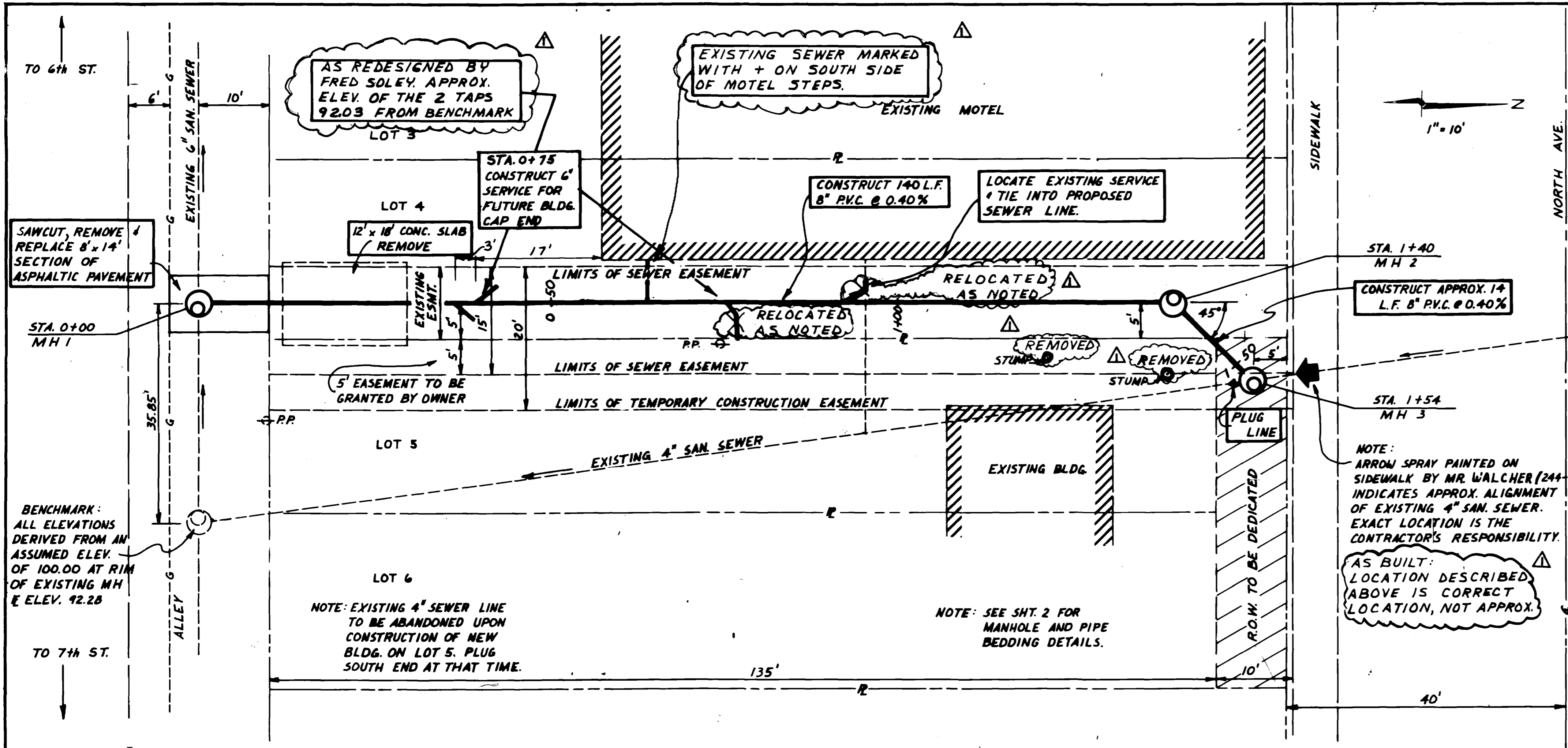


SUMMARY OF APPROXIMATE QUANTITIES

Contract Item No.	Contract Item	Unit	Quantity
202	Removal of Concrete Obstruction	LS	
202	Plug 4" Sewer Line	Each	1
202	Sawing B.P.	LF	36
403	Hot Bituminous Pavement	Ton	2
604	Manhole (8 ft.)	Each	1
604	Manhole (7 ft.)	Each	2
604	Manhole Ring and Cover	Each	3
604	8" PVC Sewer Pipe	LF	154
604	Service Wye (as detailed)	Each	2



- CONSTRUCTION NOTES:
- All construction shall be in accordance with the City of Grand Junction Standard Sanitary Sewer Details Drawings SS-1 and shall conform to City of Grand Junction "Standard Specifications for Construction of Waterlines, Sanitary Sewers, Storm Drainage and Irrigation System", 1981, and City of Grand Junction General Contract Conditions for Public Works and Utilities Construction GC-37, GC-50, and GC-65.
 - The contractor shall contact the City Utilities Superintendent (244-1568) prior to any disturbance of the existing sewer in the alley. Existing flows in the sewer must be maintained at all times.
 - The contractor shall contact the City Public Works Superintendent (244-1567) prior to any cutting of the alley pavement. All pavement disturbed in the alley will be replaced by the City.



CERTIFICATION

In accordance with the City of Grand Junction specifications and based on an actual field test of this project, I hereby certify that the infiltration rates as stated in the standard specification for the City of Grand Junction was not exceeded.

Date: 30 November 1981 *David M. Walcher, P.E.*

NO.	REVISION	DESCRIPTION	DATE

AS-BUILT 11-29-81

ARMSTRONG ENGINEERS and ASSOCIATES, INC.
ENGINEERING • SURVEYING • SOILS AND CONCRETE TESTING
861 ROOD AVENUE GRAND JUNCTION, COLORADO 81501 • (303) 245-3861

7/17/81
RLC

621 NORTH AVE.
SEWER LINE

SHEET 1 of 2