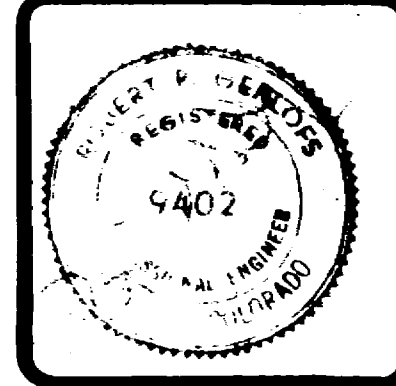
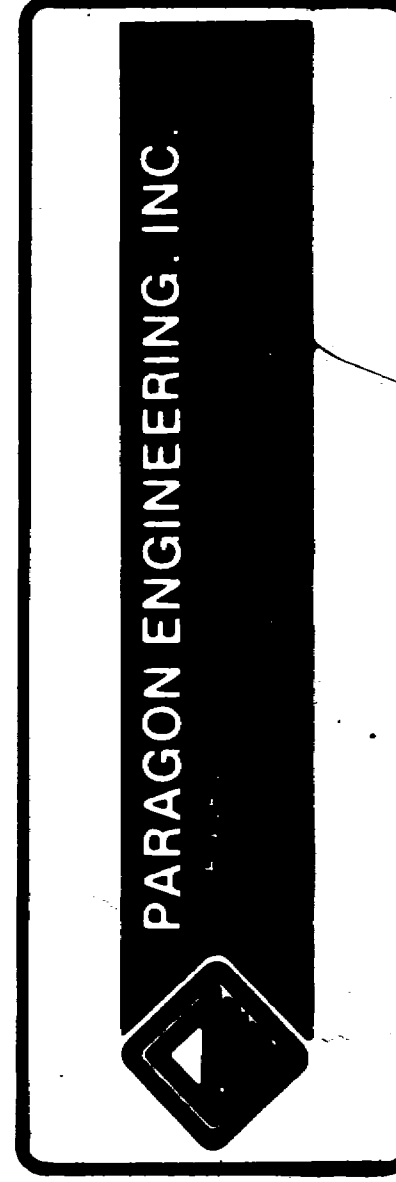
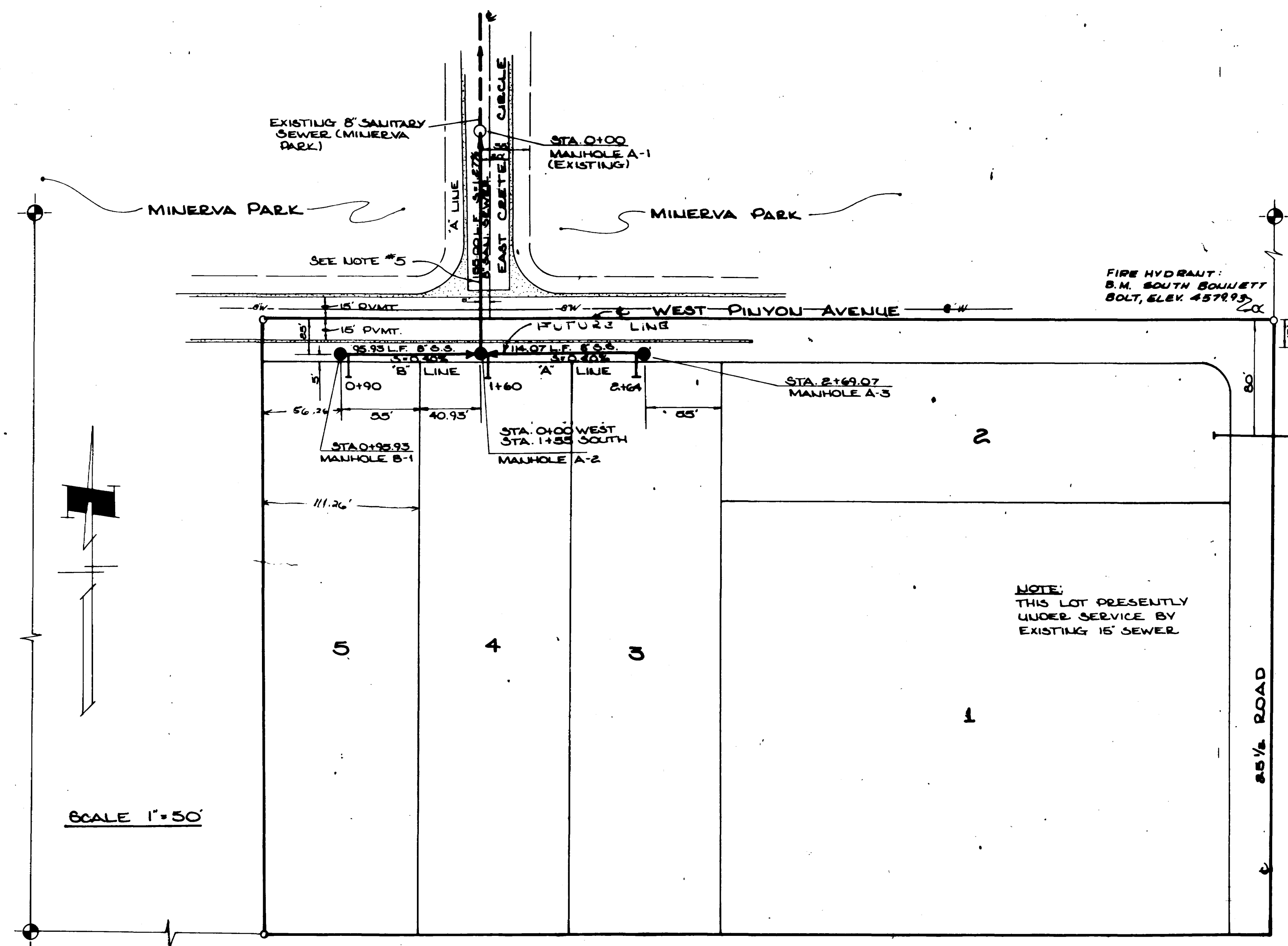


CHECKED	
DATE	
AUGUST 1978	
SCALE	AS SHOWN
REVISIONS	BY
3/7/80	MAC

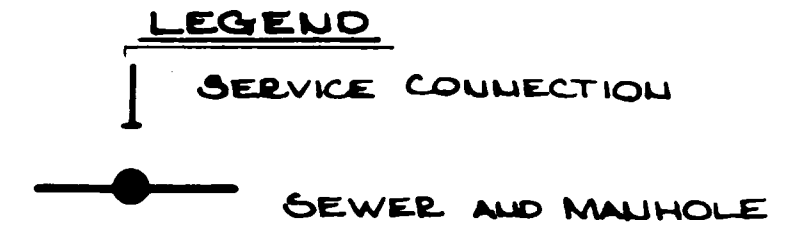


PHIPPS AND SCOTT SUBDIVISION
 CITY OF GRAND JUNCTION, COLORADO
 SANITARY SEWER PLAN & PROFILES

SHEET	1
	1



QUANTITIES:
 365 L.F. 8" SANITARY SEWER
 3 STALLARD MANHOLES
 4 SERVICE CONNECTIONS

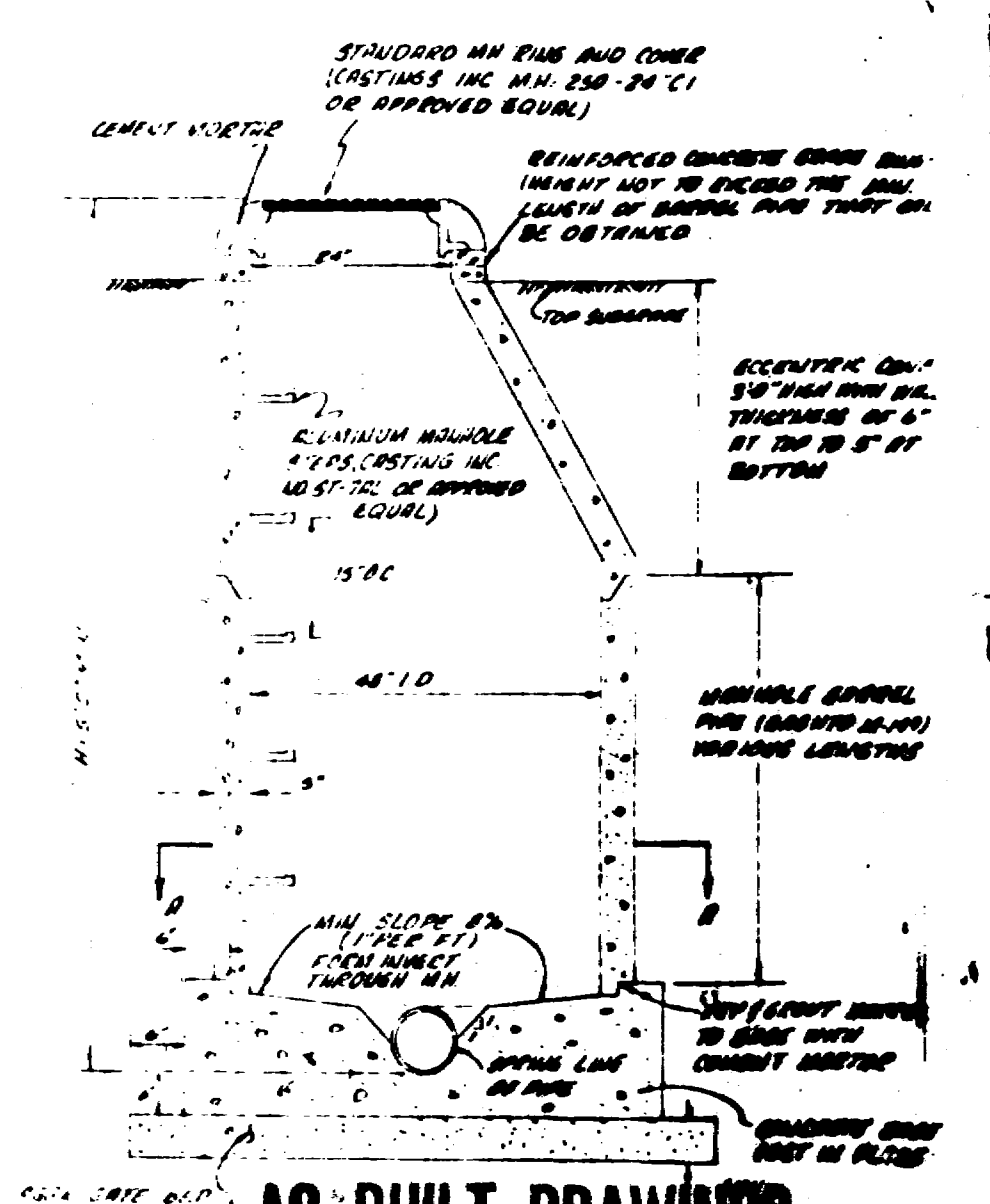
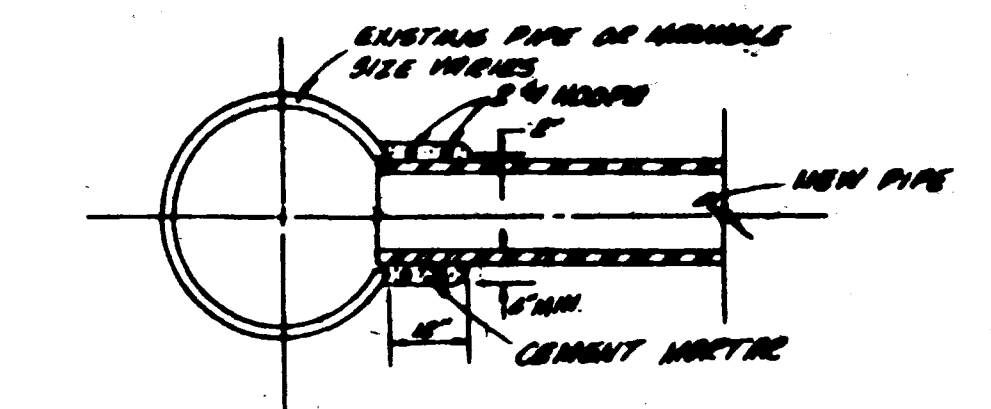
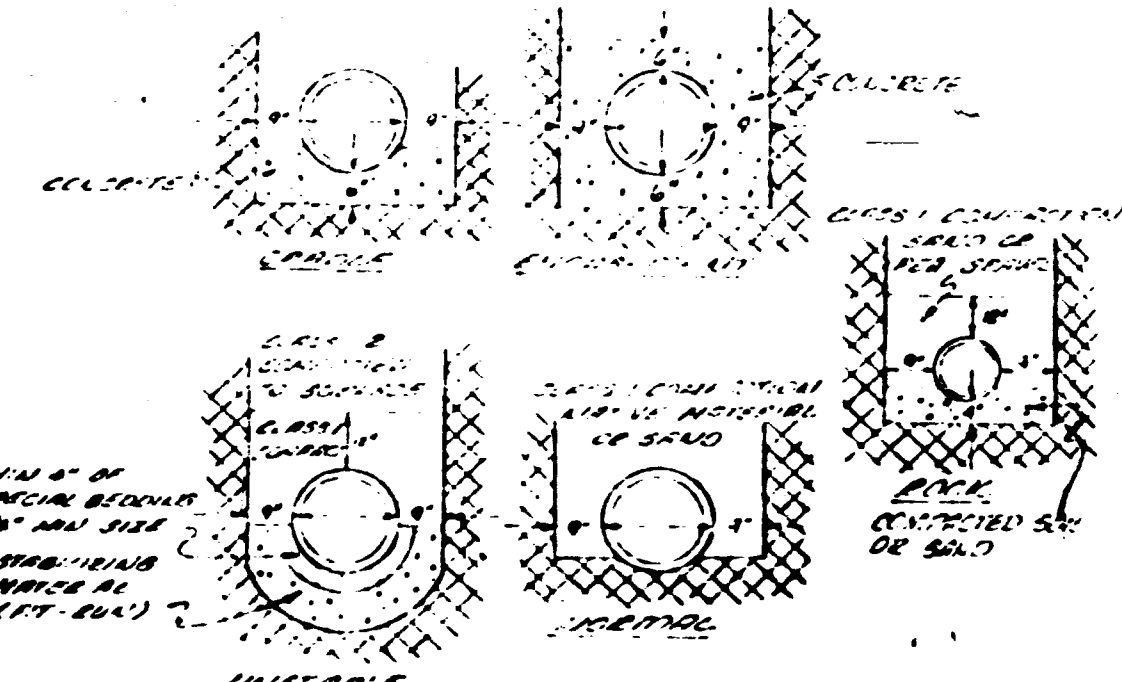
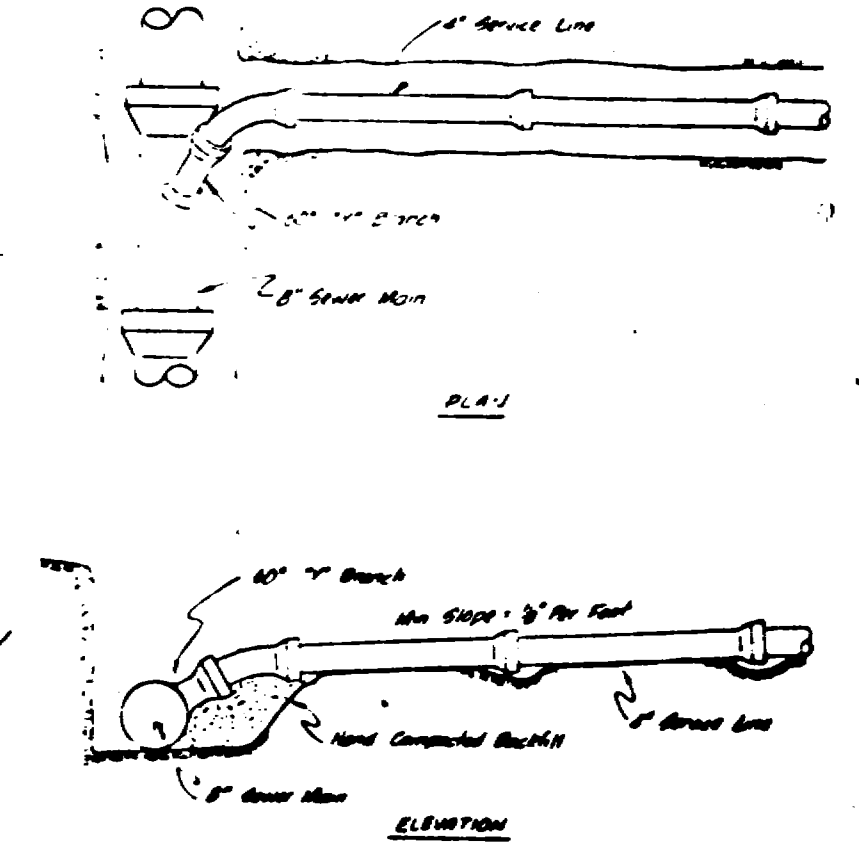
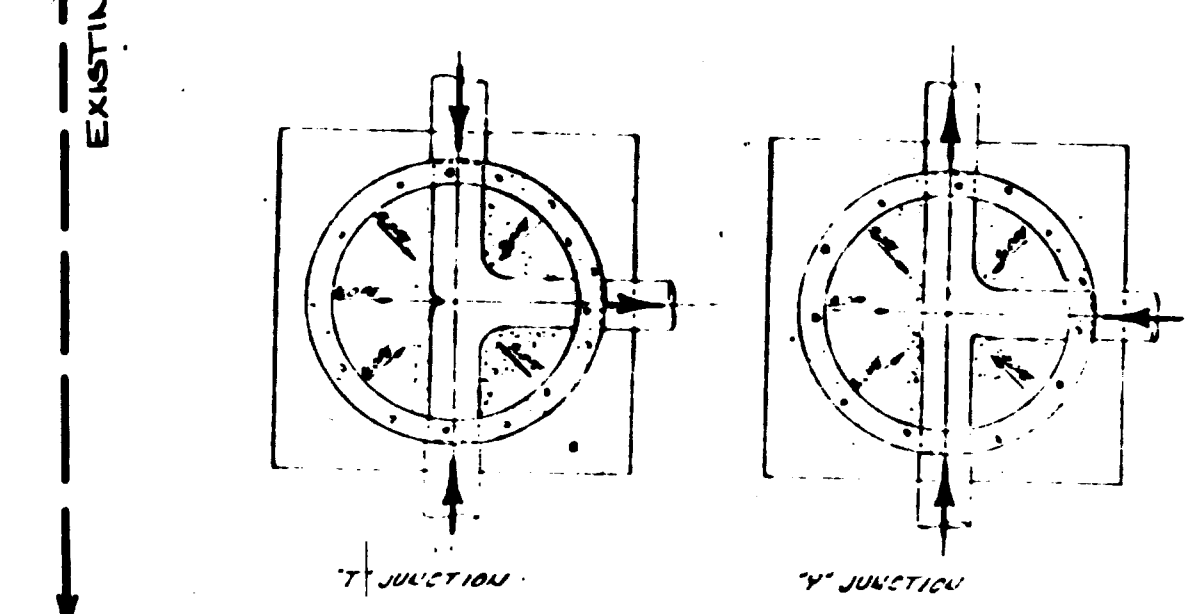


- GENERAL NOTES:**
1. ALL CONSTRUCTION TO BE DONE IN ACCORDANCE WITH THE CITY OF GRAND JUNCTION SPECIFICATIONS.
 2. TOP OF ECCENTRIC COUPLER TO BE SET AT TOP OF SUBGRADE (STREET CONTRACTOR TO GET BIMS TO FINISH GRADE OF STREET).
 3. 4" SERVICE CONNECTIONS WILL BE LOCATED AS SHOWN AND CONTINUE 10' PAST PROPERTY LINE.
 4. IF VERTICAL AND HORIZONTAL CLEARANCES ARE LESS THAN STATE MINIMUMS, THEN CONCRETE ENCAGEMENTS MAY BE REQUIRED ON SEWER LINES WHERE WATER MAINS ARE LESS THAN PROXIMITY REQUIREMENTS.
 5. TRENCH WIDTH TO BE NO WIDER THAN 3' ACROSS EXISTING PAVEMENT. SAME STRUCTURAL SECTION TO BE REPLACED AS WAS EXISTING. NEW ASPHALT TO MATCH EDGES OF CUT, AND TRENCH COMPACTION TO BE ADEQUATE TO PREVENT SETTLING.

NOTE:
 This is to certify that the system infiltration does not exceed 200 gallons per inch diameter per mile of length per day.

AS BUILT DRAWING

MANHOLE	LINE	PIPE	LENGTH	START	END	START ELEV	END ELEV	INVERT	REMARKS
MANHOLE A-1 (EXISTING)	A LINE	8" S.S.	114.07	1+00	1+114.07	75.08	74.08	S=0.40%	MATCH PROPOSED RE TO TOP OF EXISTING GROUT IN M.H. FLOOR
MANHOLE A-2	A LINE	8" S.S.	114.07	1+114.07	1+228.14	75.08	74.08	S=0.40%	
MANHOLE A-3	A LINE	8" S.S.	114.07	1+228.14	1+342.21	75.08	74.08	S=0.40%	
MANHOLE B-1	B LINE	8" S.S.	155.00	0+00	0+155.00	75.08	74.08	S=1.60%	
MANHOLE B-2	B LINE	8" S.S.	155.00	0+155.00	0+310.00	75.08	74.08	S=1.60%	
MANHOLE B-1	B LINE	8" S.S.	155.00	0+310.00	0+465.00	75.08	74.08	S=1.60%	



AS BUILT DRAWINGS