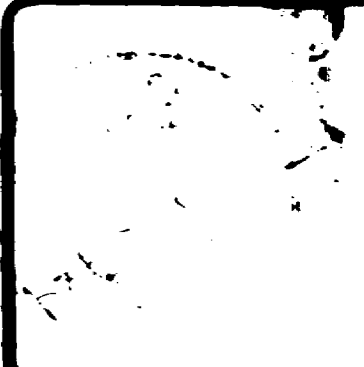
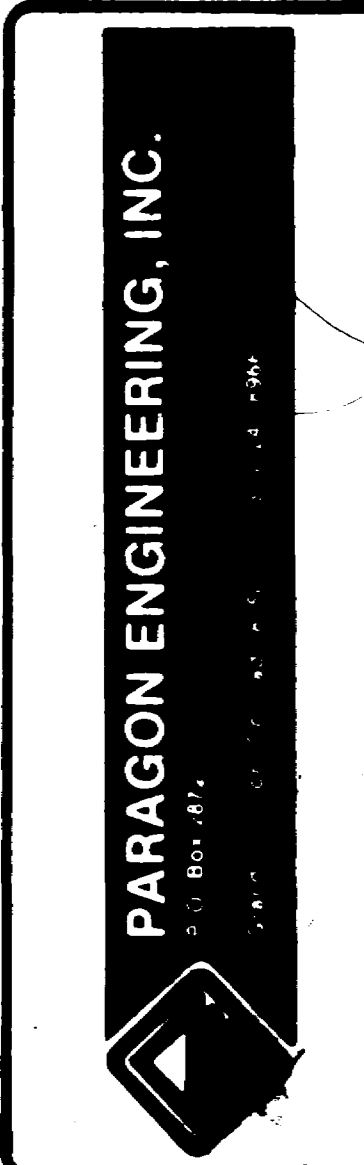
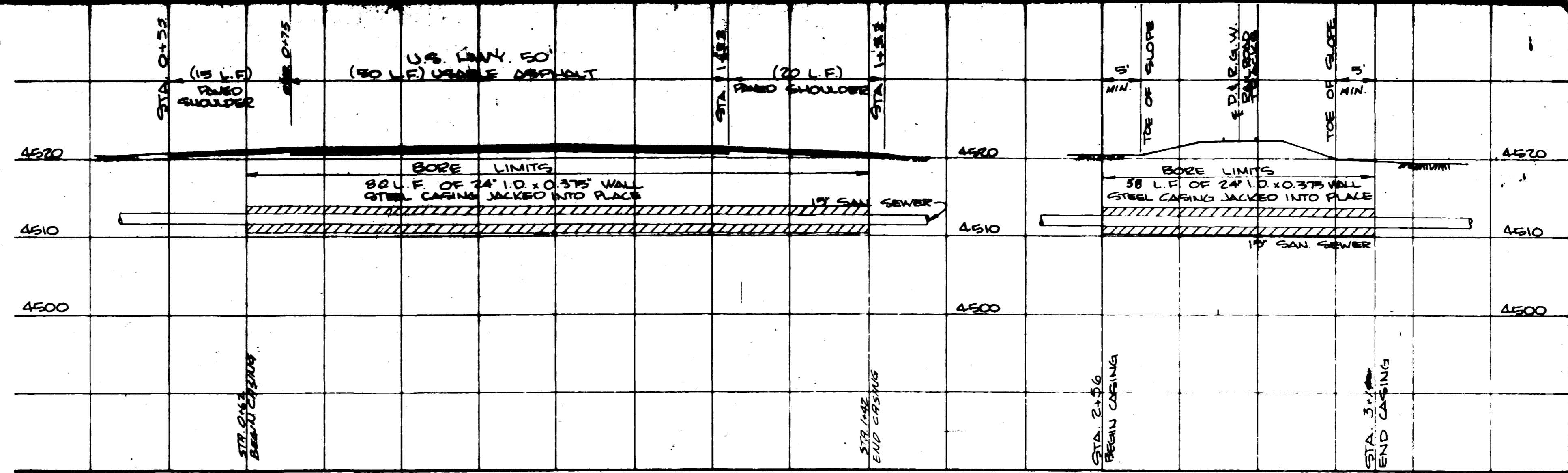


REVISIONS	BY
APRIL, 1981	PMO
AUGUST, 1981	PMO
5-23-82	AG/LL/RY

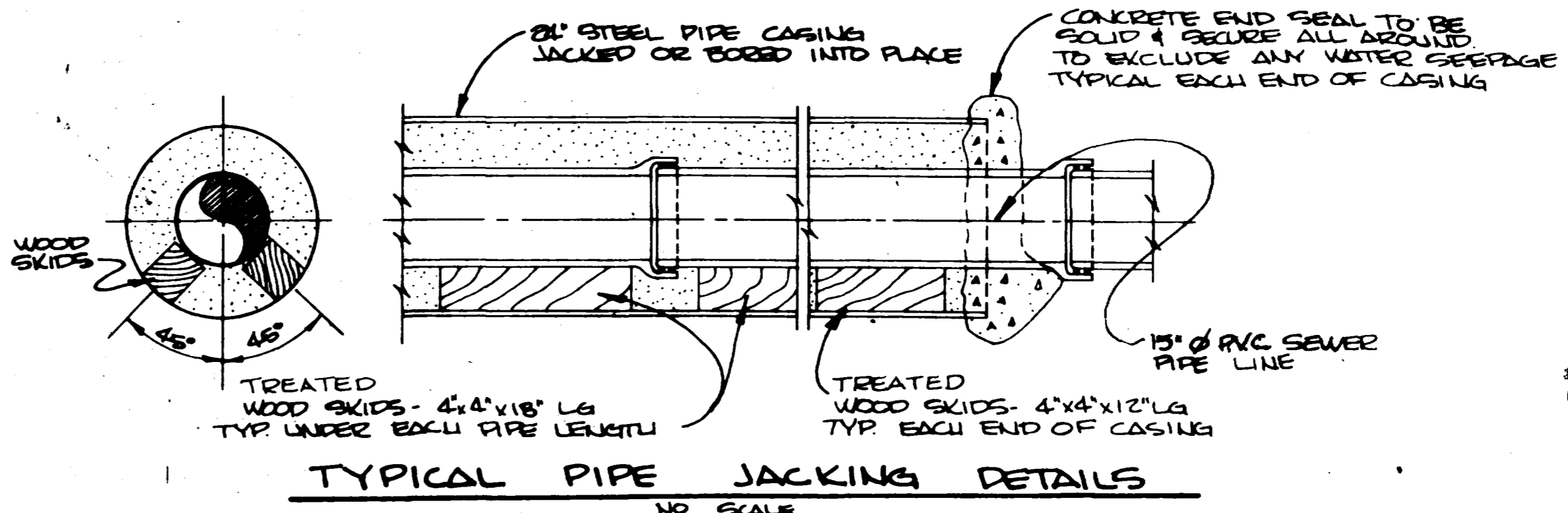


VALLEY WEST WATER & SANITATION  
FOR VALLEY WEST FILING NO. 3  
OUTFALL LINE ACROSS HIGHWAY 50  
RAILROAD AND RIVER ROAD

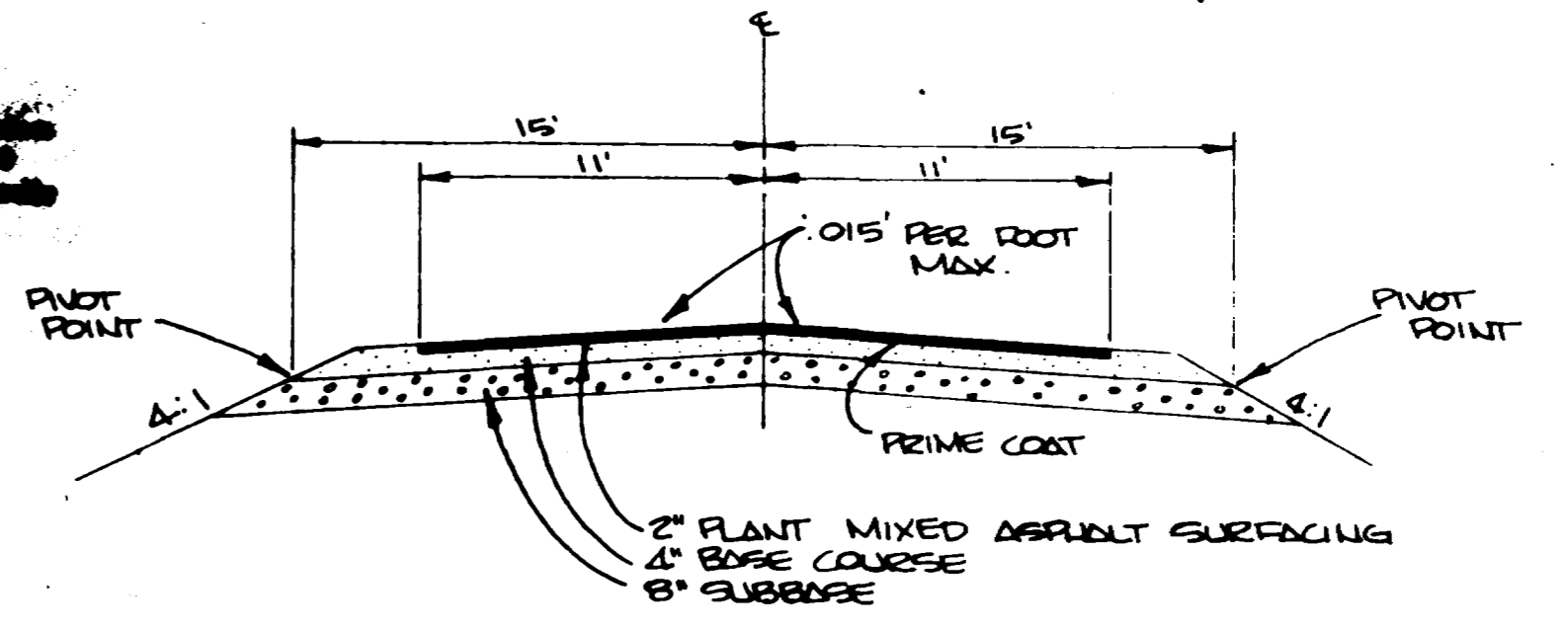


HIGHWAY CROSSING DETAIL  
SCALE: 1"=10'

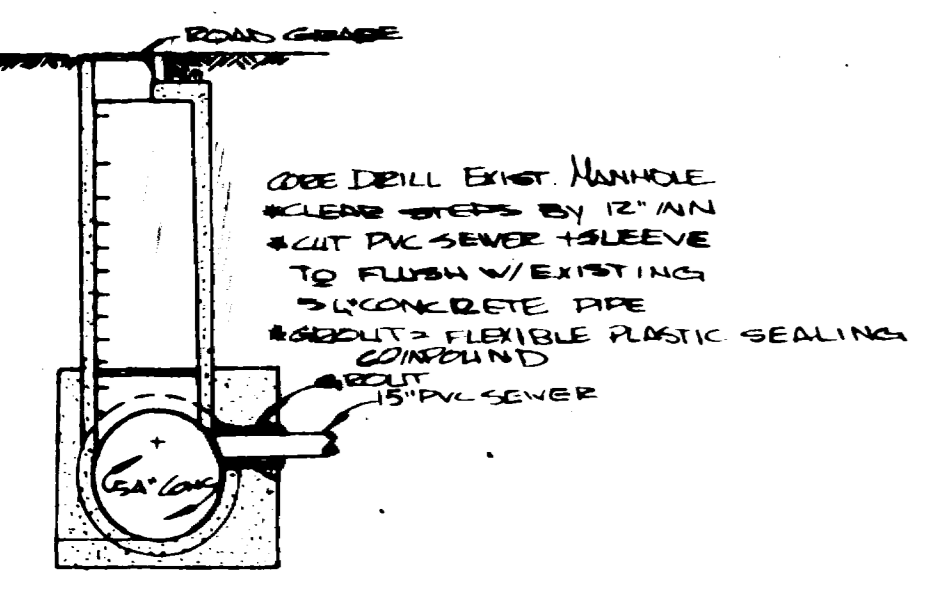
RAILROAD CROSSING DETAIL  
SCALE: 1"=10'



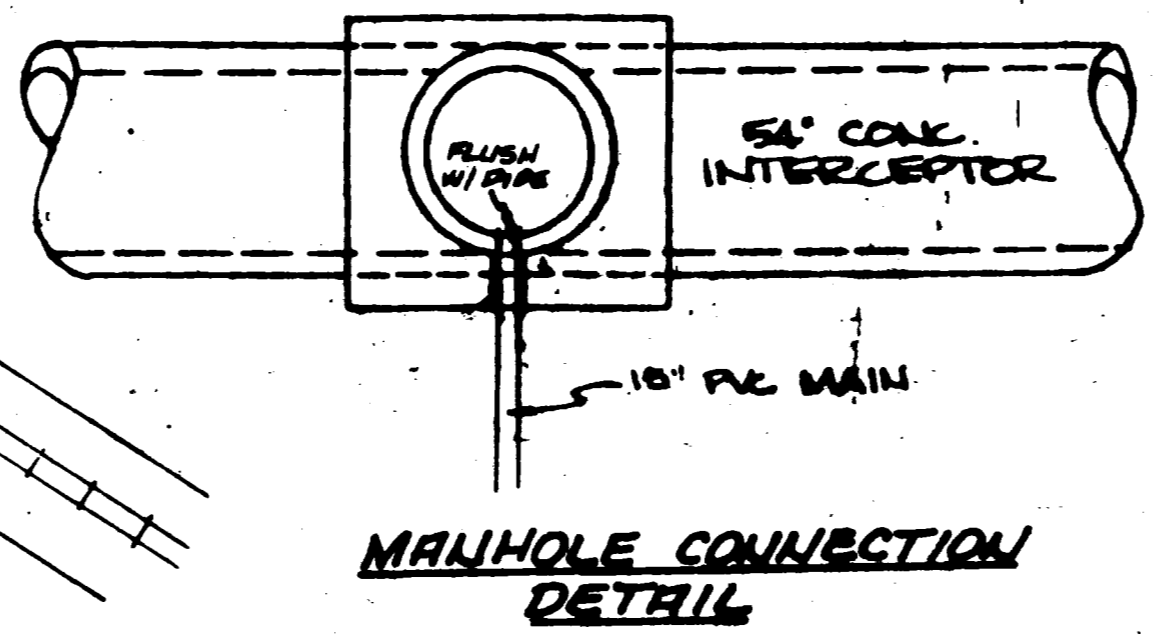
TYPICAL PIPE JACKING DETAILS  
NO SCALE



PROPOSED TYPICAL 'RIVER ROAD' ROAD SECTION  
NO SCALE

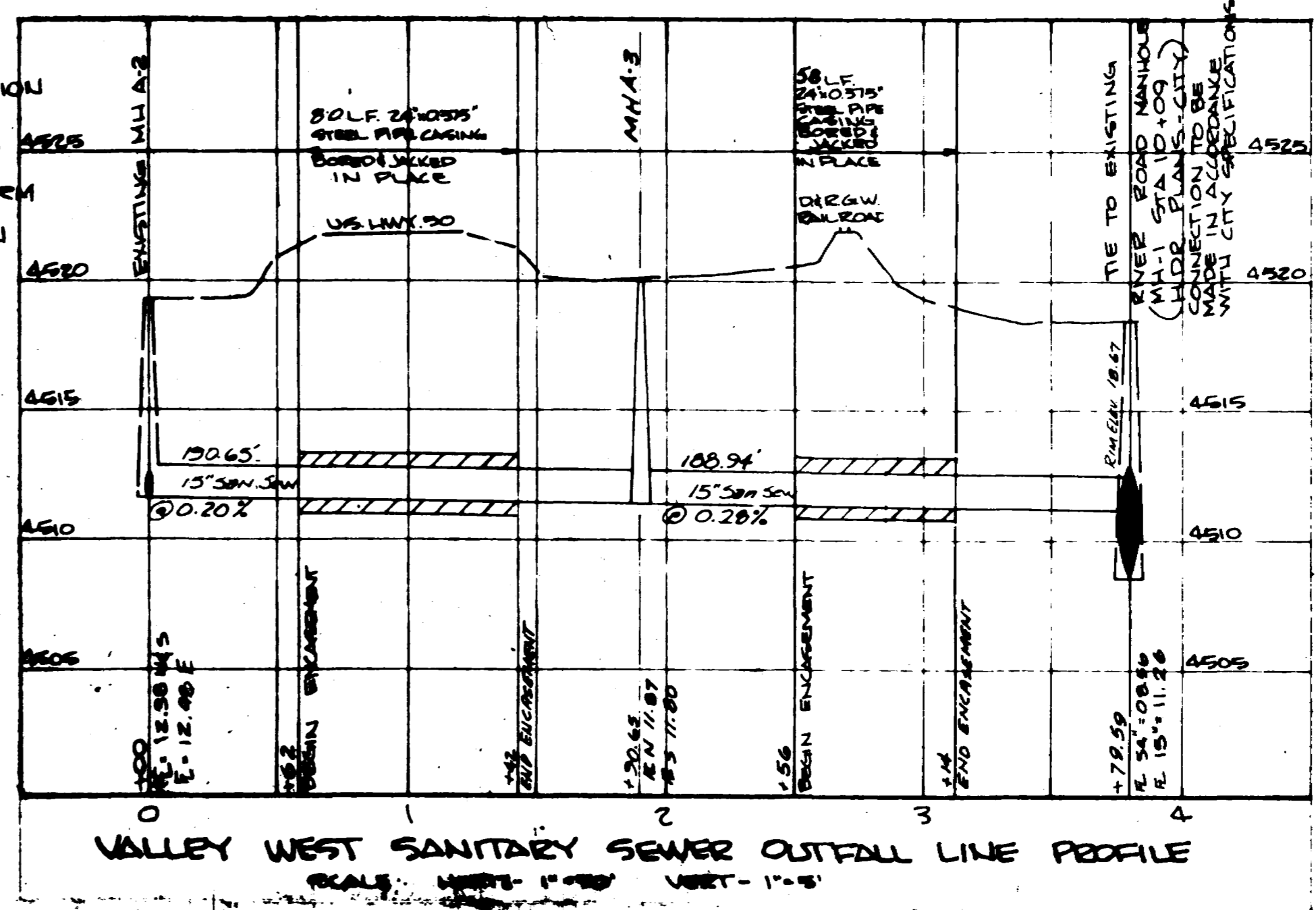


MANHOLE CONNECTION  
DETAIL  
(RIVER ROAD MH-1)

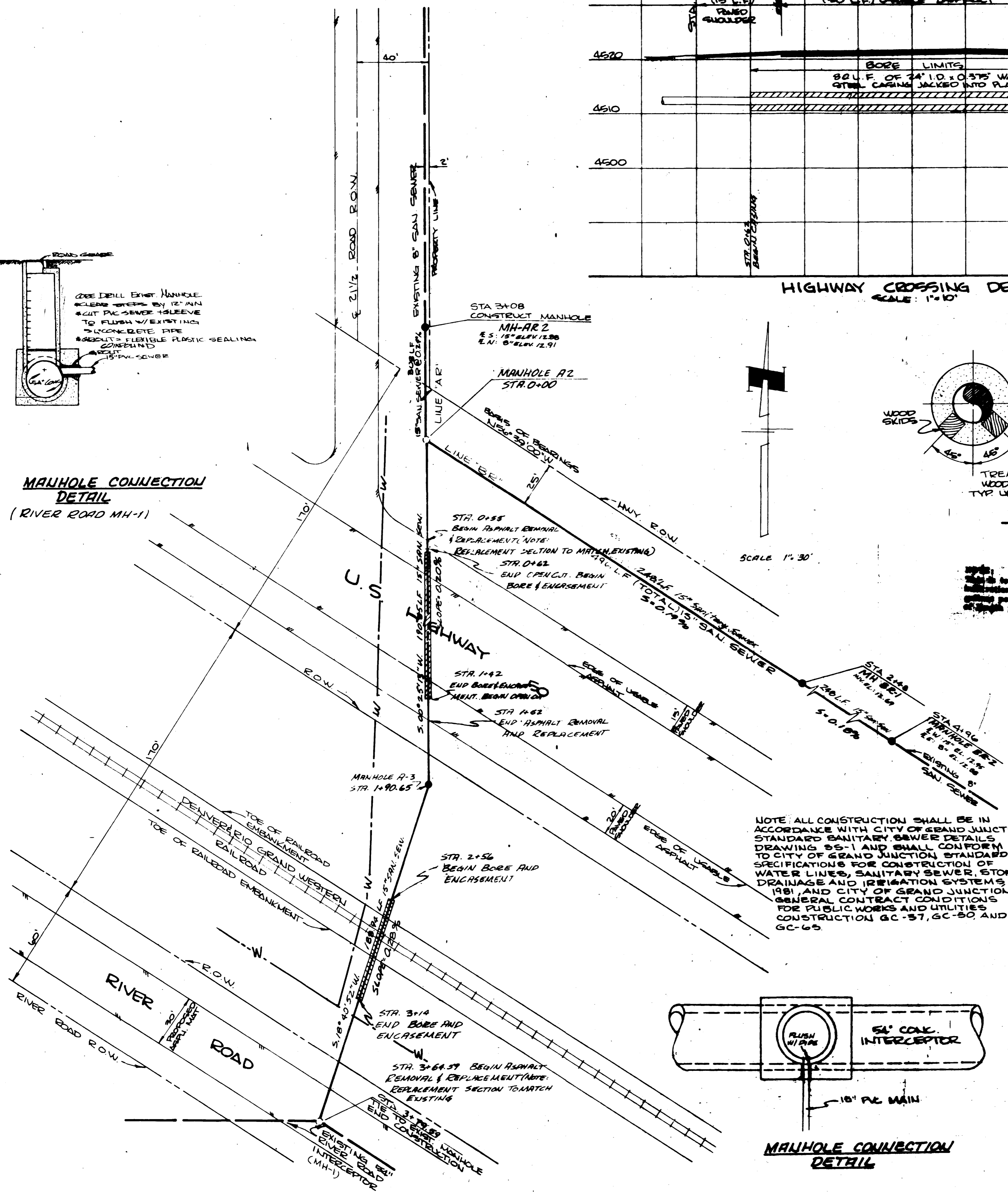


MANHOLE CONNECTION  
DETAIL

NOTE: ALL CONSTRUCTION SHALL BE IN ACCORDANCE WITH CITY OF GRAND JUNCTION STANDARD SANITARY SEWER DETAILS DRAWING 85-1 AND SHALL CONFORM TO CITY OF GRAND JUNCTION STANDARD SPECIFICATIONS FOR CONSTRUCTION OF WATER LINES, SANITARY SEWER, STORM DRAINAGE AND IRRIGATION SYSTEMS 1981, AND CITY OF GRAND JUNCTION GENERAL CONTRACT CONDITIONS FOR PUBLIC WORKS AND UTILITIES CONSTRUCTION GC-37, GC-50, AND GC-65.



VALLEY WEST SANITARY SEWER OUTFALL LINE PROFILE  
SCALE: HORIZ. 1"=100' VERT. 1"=5'



SCALE: 1"=30'

CHECKED
DATE
APRIL 1981
SCALE
1" = 5' VERT.
1" = 50' HORIZ.
REVISIONS
AUGUST 1981
BY
PMO

**PARAGON ENGINEERING, INC.**  
 P.O. Box 2872  
 Grand Junction, Colorado 81501  
 (303) 243-8966

VALLEY WEST WATER & SANITATION DISTRICT  
 FOR VALLEY WEST FILING NO. 3  
 OUTFALL LINE ACROSS HIGHWAY 50  
 RAILROAD AND EVER ROAD

SHEET  
 2  
 OF 2 SHEETS

