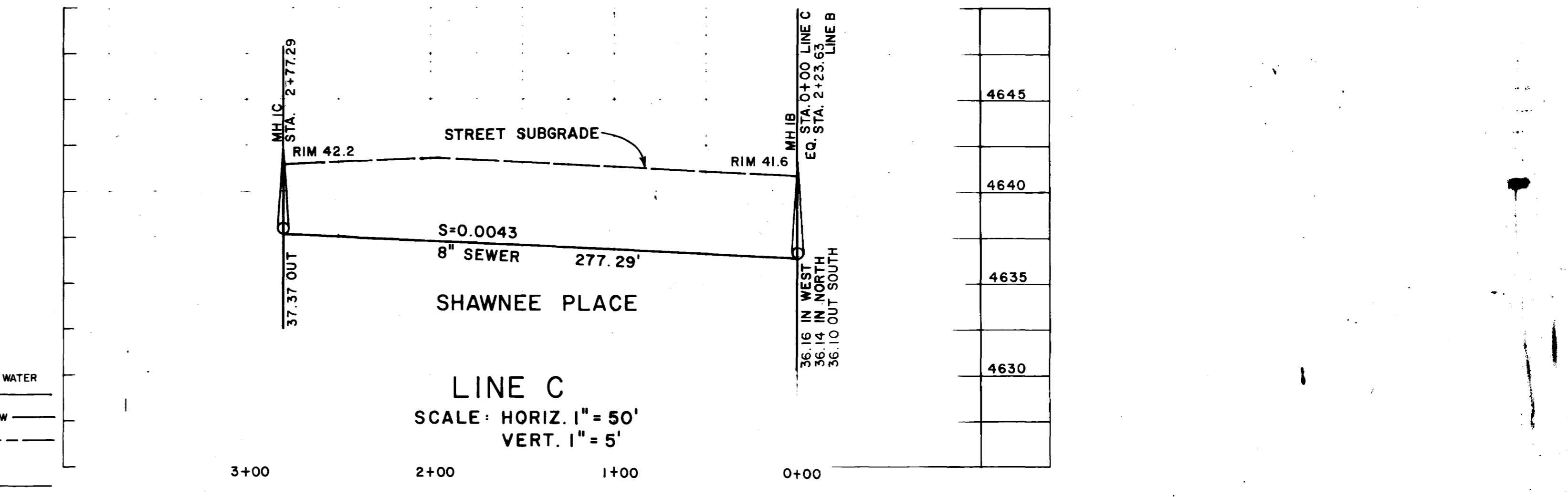
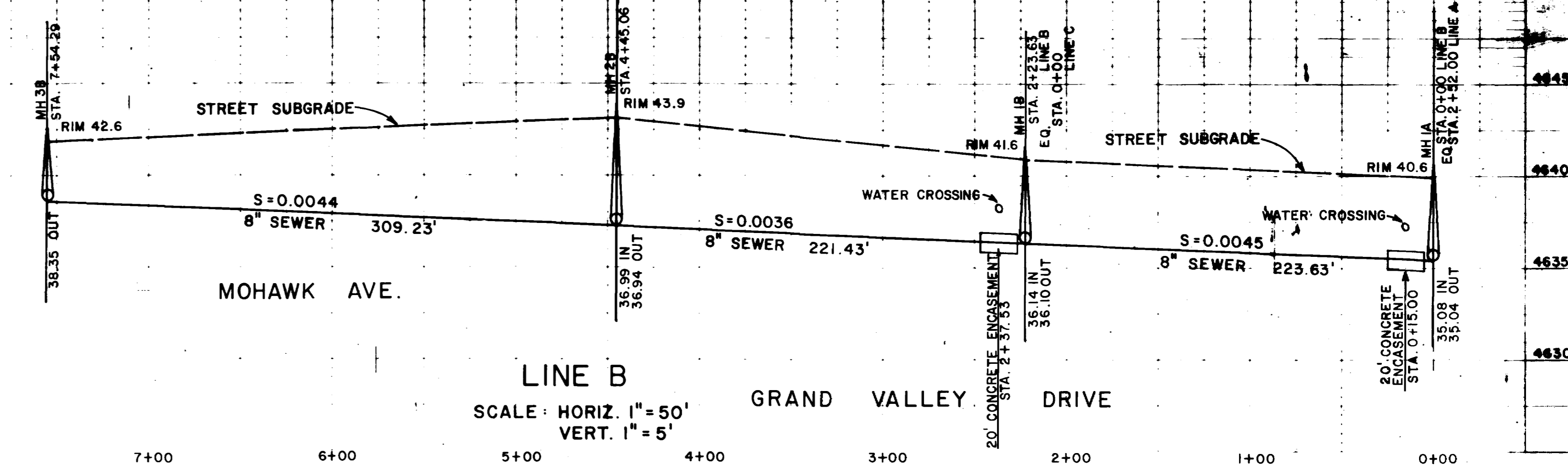
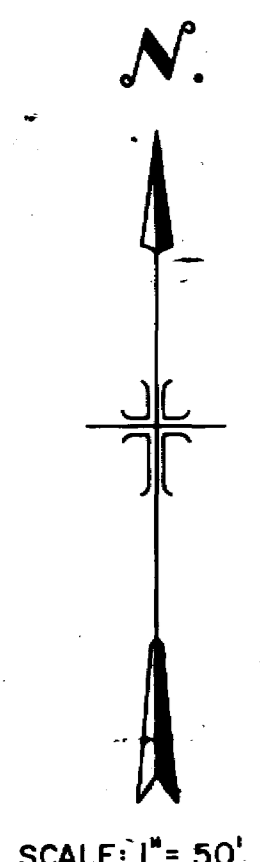
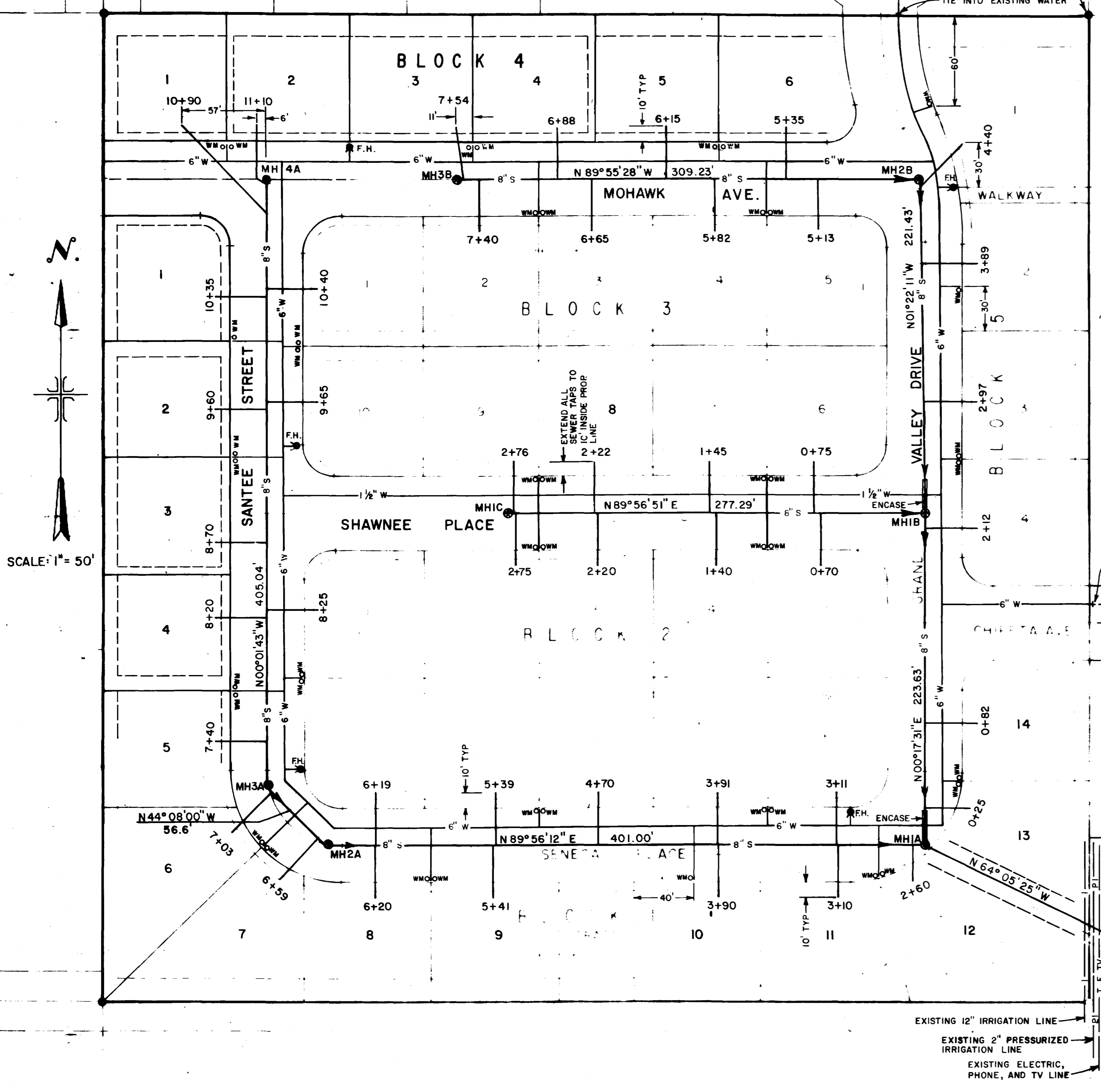


FRUITWOOD SUBD. FILING FOUR

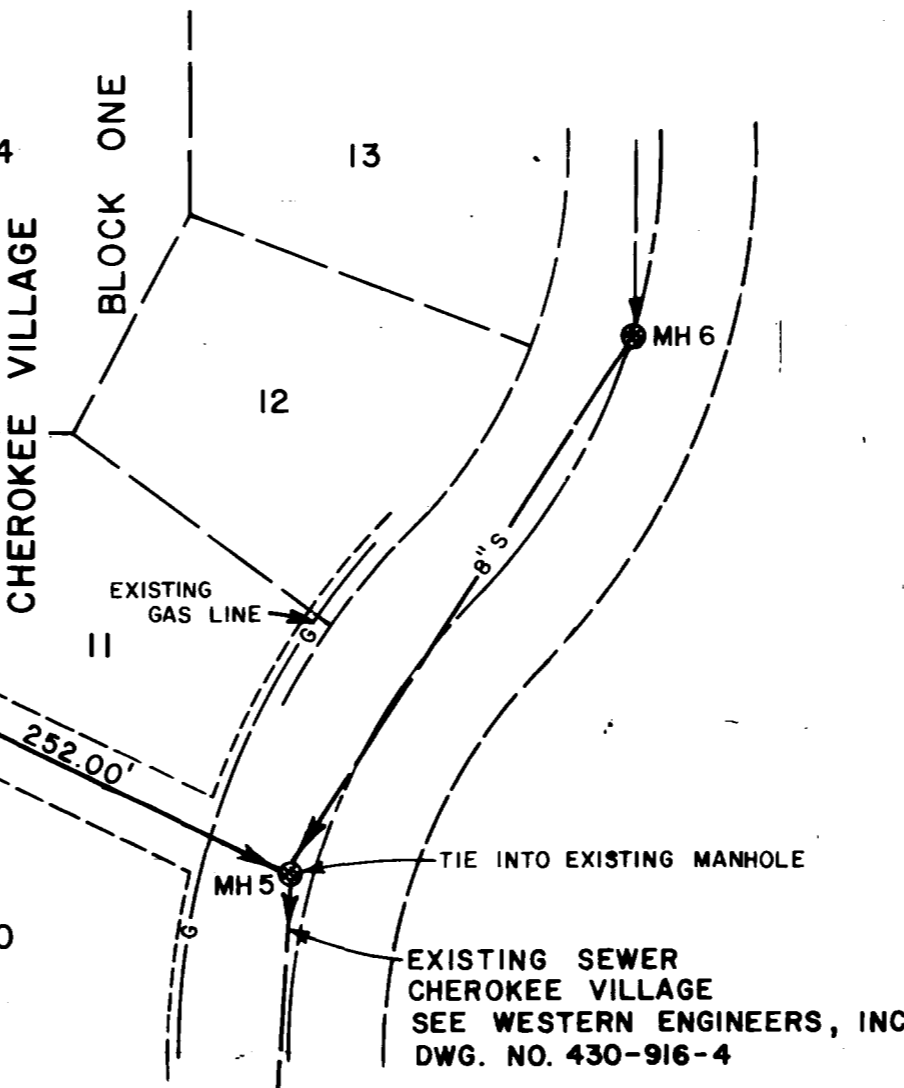


LEGEND

- W — WATER LINE
- S — SEWER LINE
- G — GAS LINE
- E, T, TV — ELECTRIC, TELEPHONE, & CABLE TV LINE
- I — IRRIGATION LINE
- PI — PRESSURIZED IRRIGATION LINE
- — — PROPOSED LINE
- — — EXISTING LINE
- MH — MANHOLE
- WM — WATER METER
- FH — FIRE HYDRANT
- ▭ — CONCRETE ENCASUREMENT

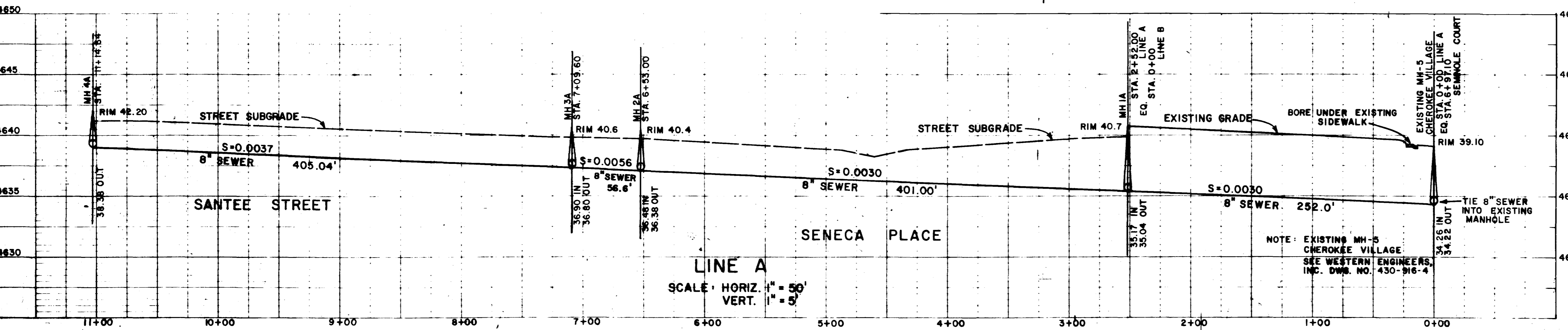
SEWER QUANTITIES

8" SEWER	2150 L.F.
SHALLOW MANHOLE (<5')	5 EA.
STANDARD MANHOLE	3 EA.
8" x 4" TAPS	44 EA.
4" SEWER TO PROPERTY LINE	1165 L.F.
4" SEWER TO 10' INSIDE PROPERTY LINE	445 L.F.
PAVEMENT REPLACEMENT	15 L.F.
TRENCH COMPACTION	3315 L.F.
CONCRETE ENCASUREMENT	40 L.F.
CONNECTION TO EXISTING MANHOLE	1 EA.



EXISTING SEWER CHEROKEE VILLAGE
SEE WESTERN ENGINEERS, INC.
DWG. NO. 430-916-4

NOTES:
THE SEWAGE COLLECTION SYSTEM SHALL BE CONSTRUCTED IN ACCORDANCE WITH THE POLICIES AND SPECIFICATIONS OF THE CENTRAL GRAND VALLEY SANITATION DISTRICT.
THE WATER DISTRIBUTION SYSTEM SHALL BE CONSTRUCTED IN ACCORDANCE WITH THE POLICIES AND SPECIFICATIONS OF THE CLIFTON WATER DISTRICT.
Infiltration does not exceed 200 gal./mile/in./dia./day.



AS BUILT

Contractor Leon Parkinson
Constructed March 1982

Revised 8/5/82

WESTERN ENGINEERS, INC.
CHEROKEE VILLAGE NO. TWO
SEWER AND WATER PL
SEWER PROFILE

DESIGNED BY GRAND VALLEY
GRAND JUNCTION, COLO. DWG. 895-282