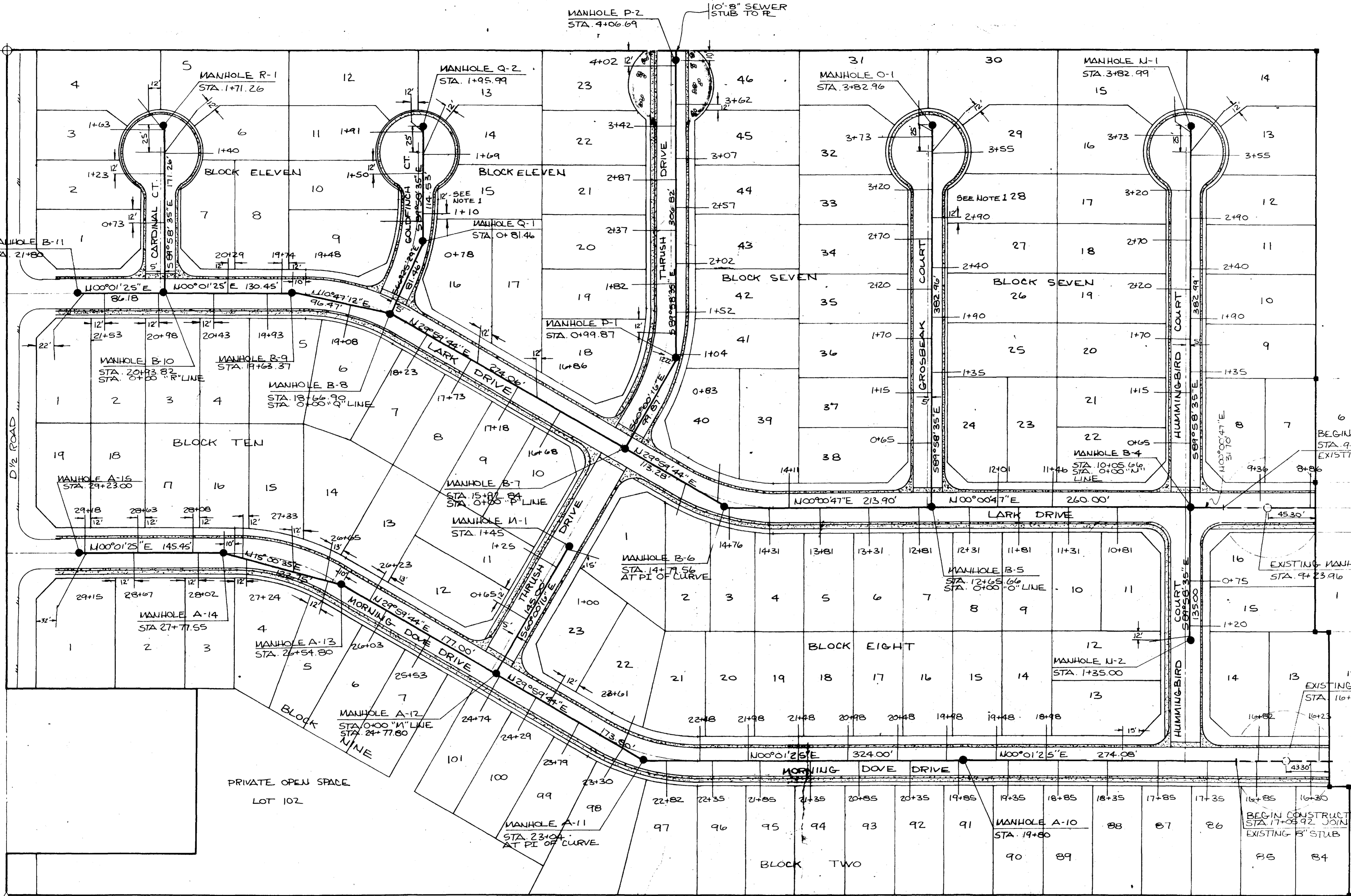


CHECKED	LDC
DATE	6-1-81
SCALE	1"=50'

REVISIONS	BY
AS BUILT 4-5-82	JSS

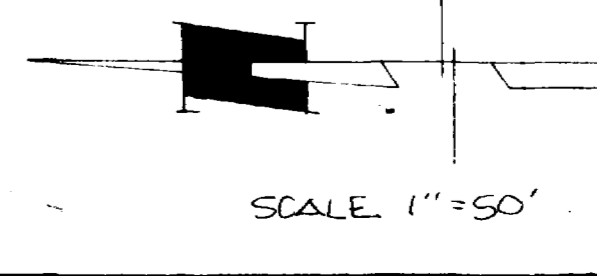
**PARAGON ENGINEERING, INC.**  
 P.O. Box 2872  
 Grand Junction, Colorado 81501 (303) 243-8986



AS BUILT DRAWINGS

AS BUILT DRAWINGS

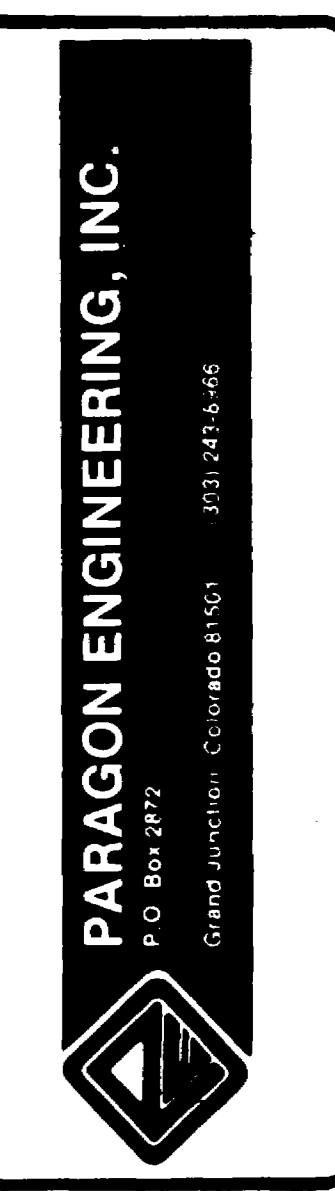
NOTE:  
 1. SEWER SERVICELINES TYPICALLY LOCATED 12' FROM RIGHT PROPERTY LINE AS ONE LOOKS AT THE LOT FROM THE STREET.  
 2. WATER SERVICELINES TYPICALLY LOCATED 2' FROM RIGHT PROPERTY LINE AS ONE LOOKS AT THE LOT FROM THE STREET.



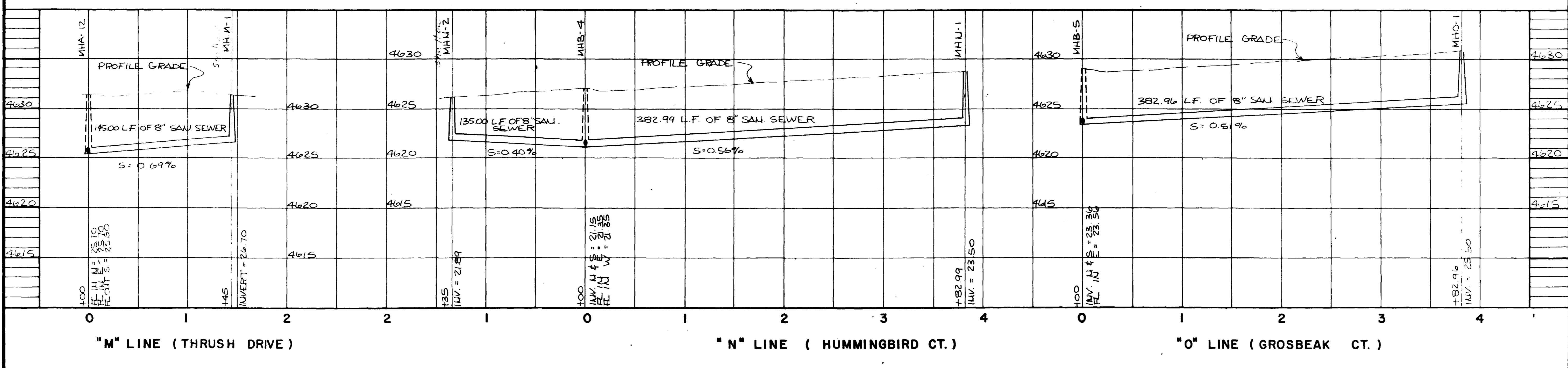
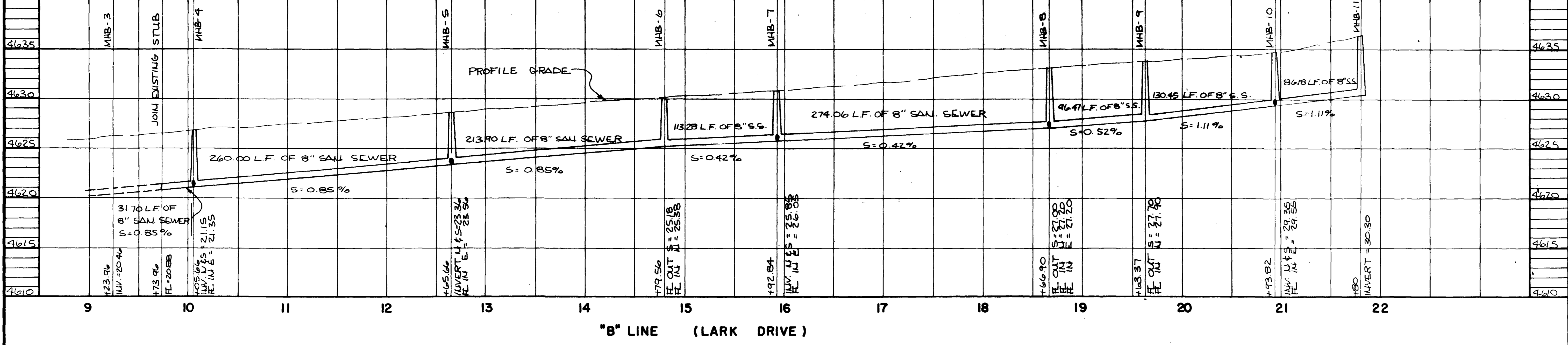
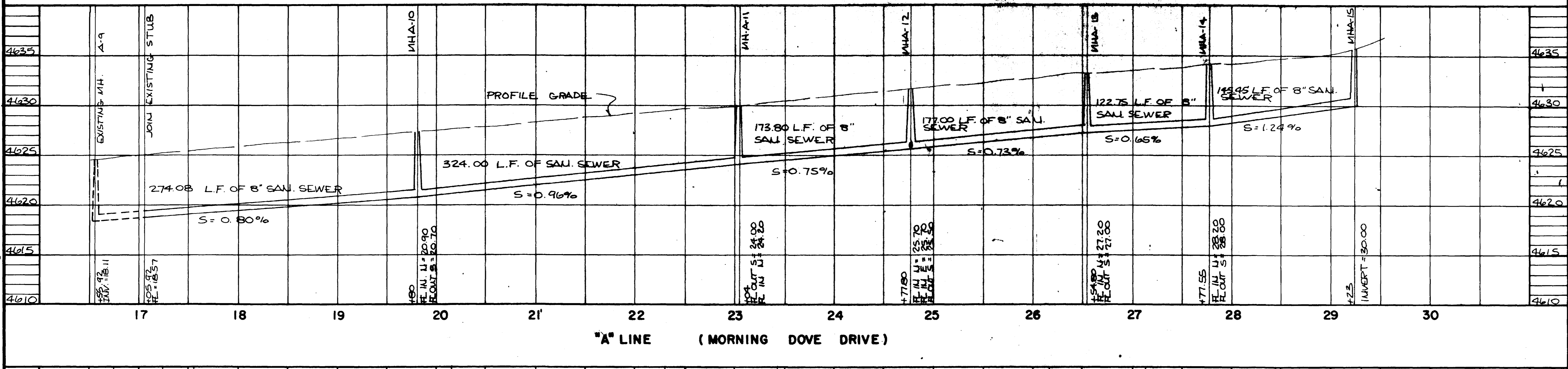
PARKWOOD ESTATES  
 FILING NO. THREE  
 MESA COUNTY, COLORADO  
 SANITARY SEWER PLAN

REVISIONS	BY

AS BUILT DRAWINGS

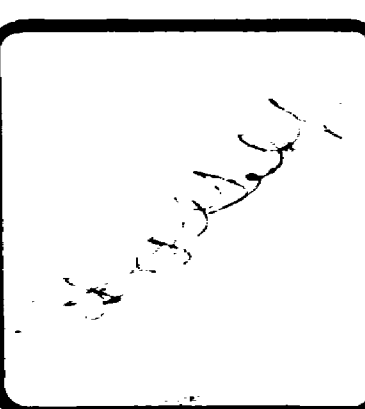


PARKWOOD ESTATES  
FILING NO. THREE  
MESA COUNTY, COLORADO  
SANITARY SEWER PROFILES

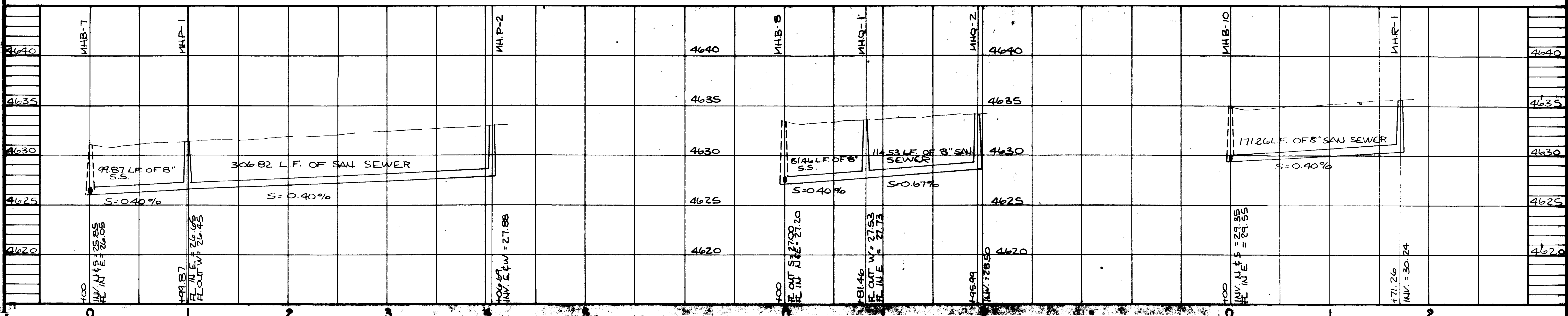


REVISIONS	BY

**PARAGON ENGINEERING, INC.**  
P.O. Box 2872  
Grand Junction, Colorado 81501 (303) 243-8866



PARKWOOD ESTATES  
FILING NO. THREE  
MESA COUNTY, COLORADO  
SANITARY SEWER PROFILE & DETAILS

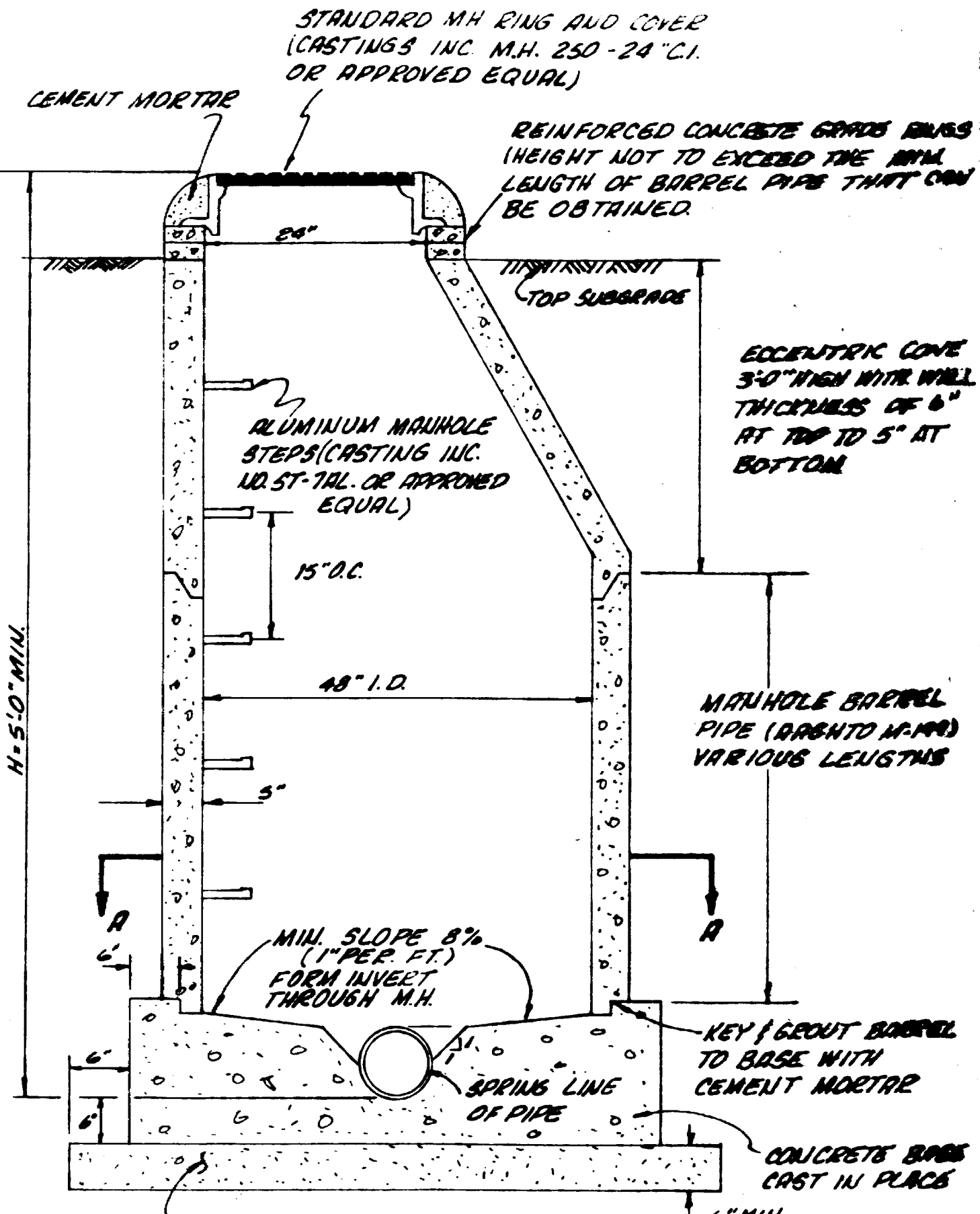


"P" LINE (THRUST DRIVE)

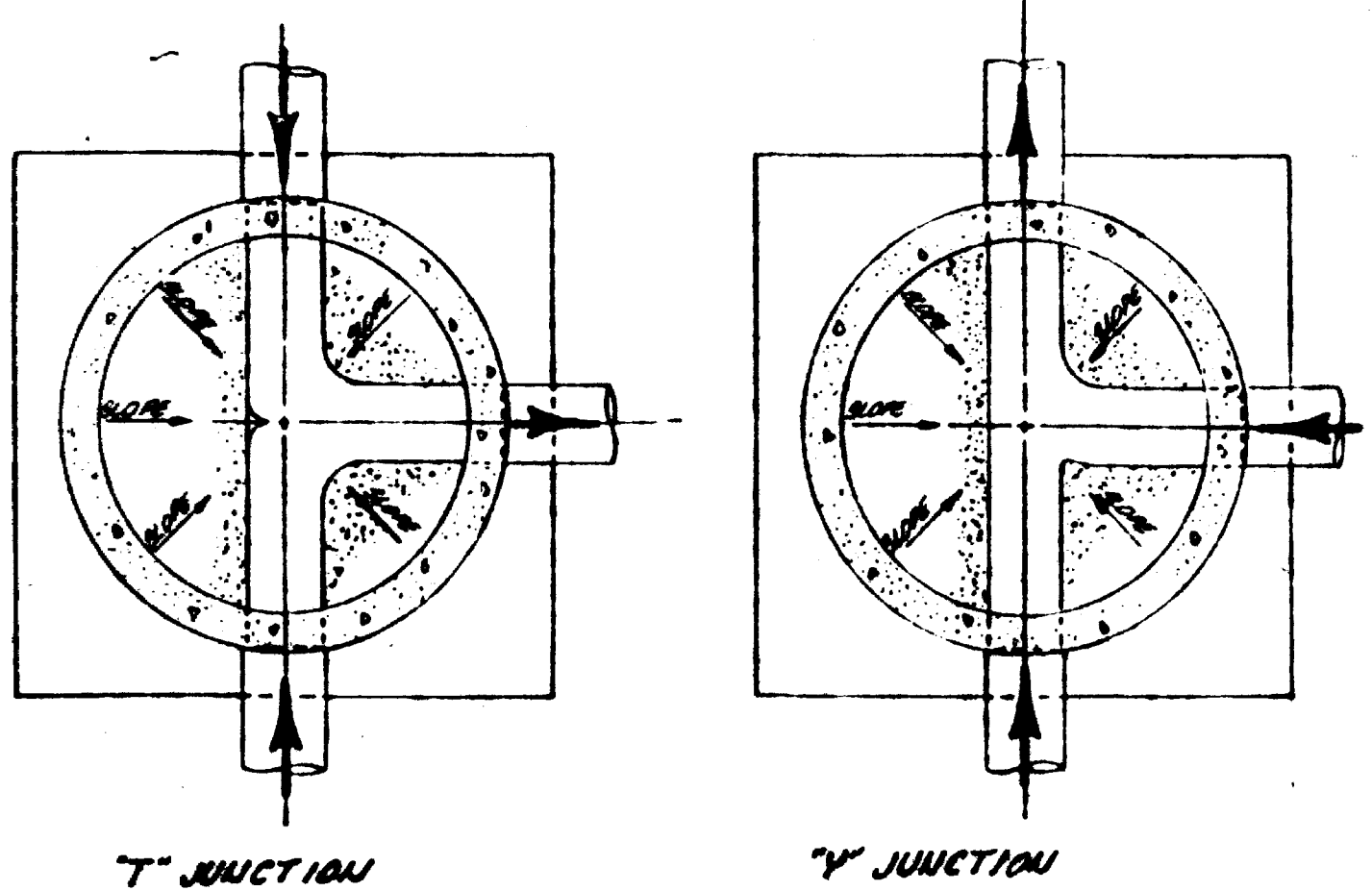
"Q" LINE (GOLDFINCH CT.)

"R" LINE (CARDINAL CT.)

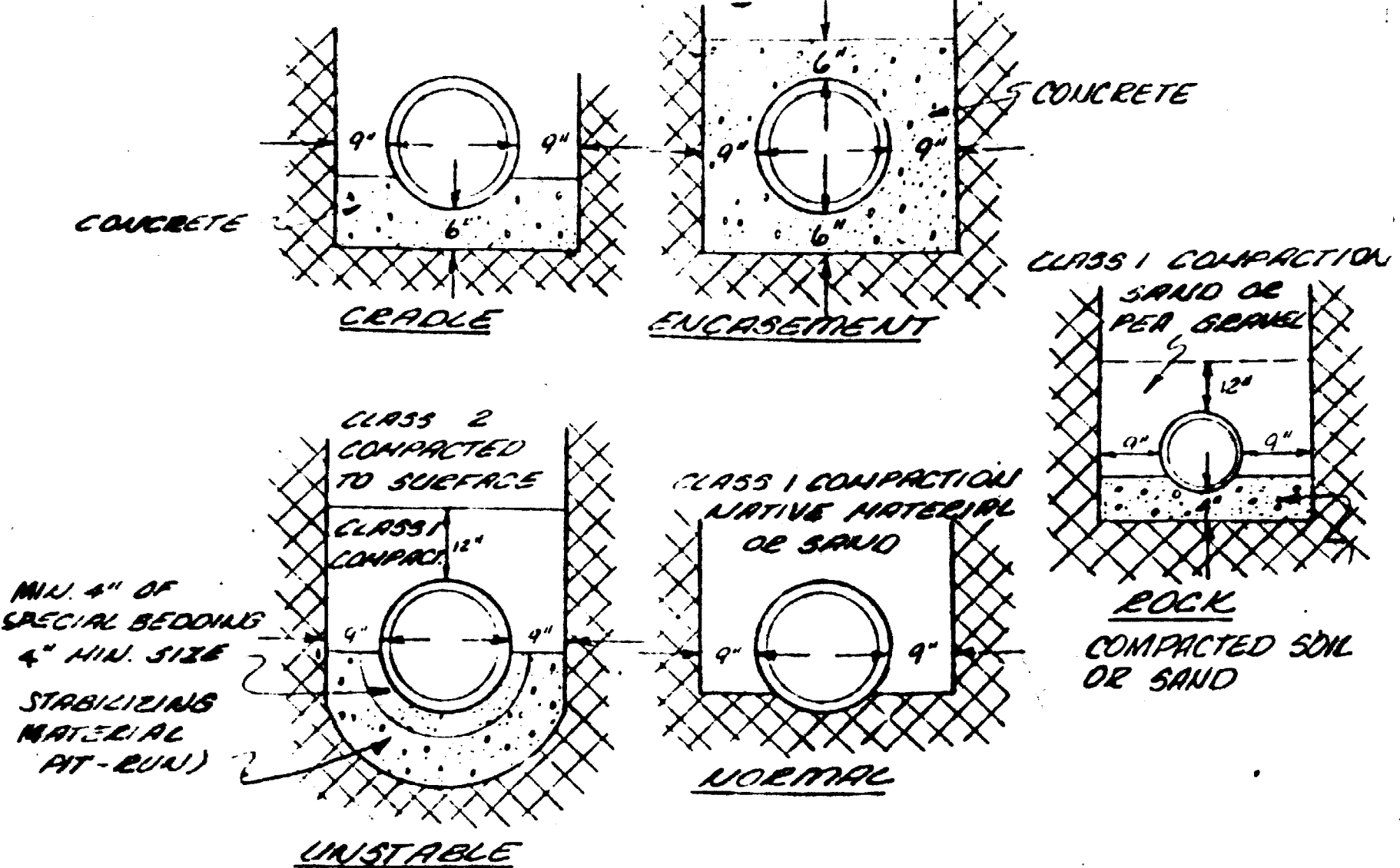
HORIZ. 1" = 50'  
VERT. 1" = 5'



**STANDARD MANHOLE**

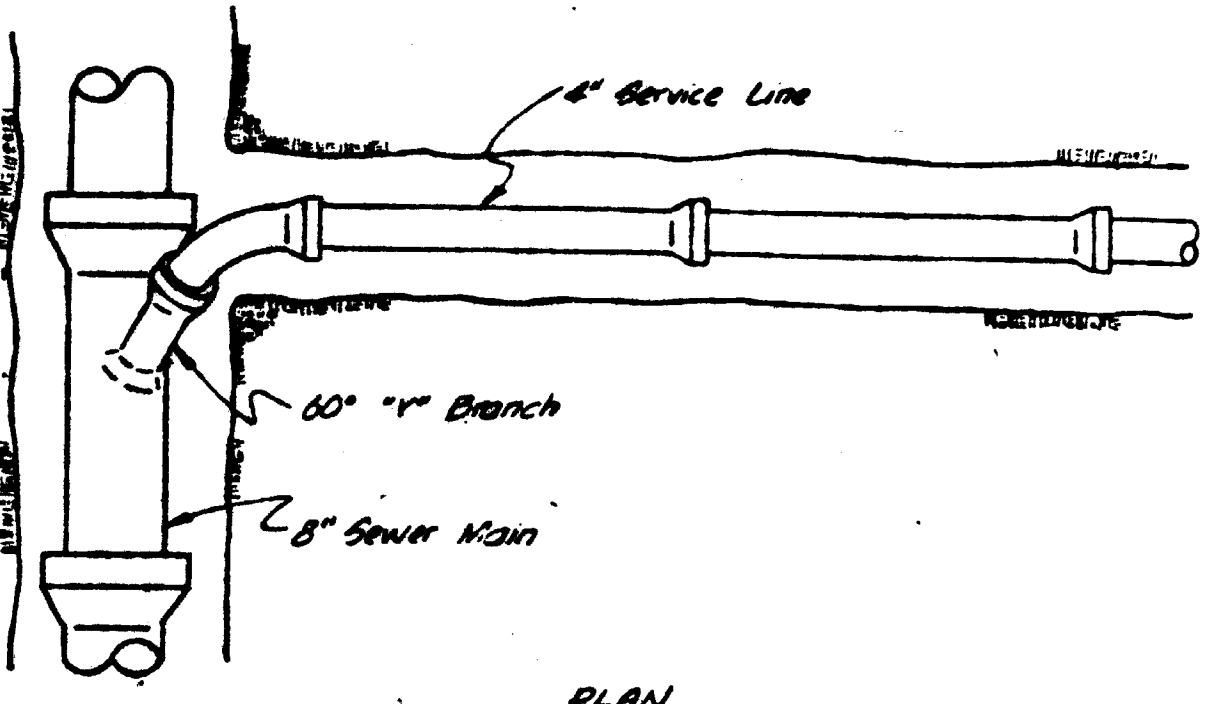


**SECTION "A-A"**

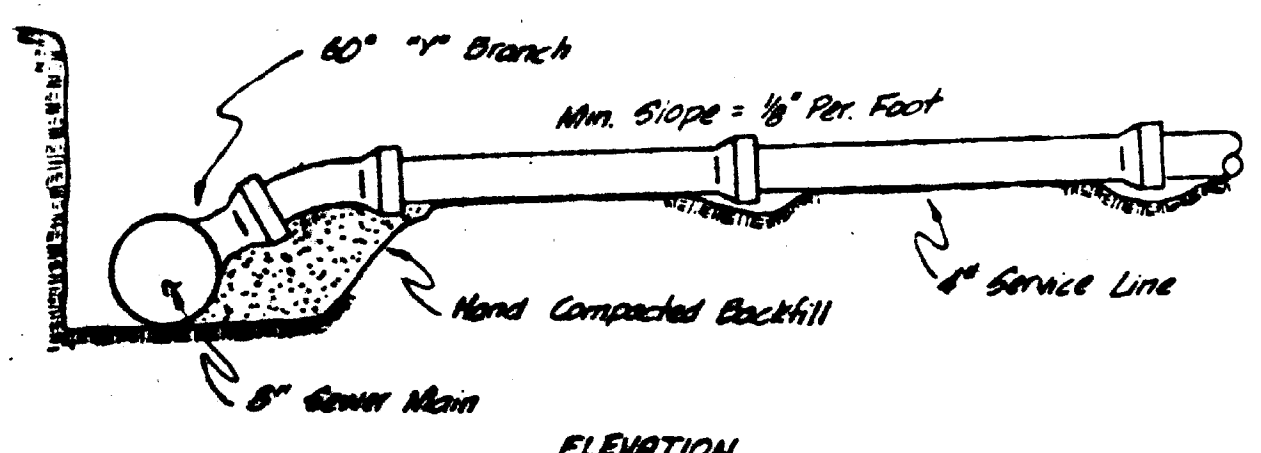


**TYPICAL BEDDING DETAIL**

N.T.S.  
HAND DIG FOR BELL OR COUPLING



**PLAN**



**ELEVATION**

**STANDARD SERVICE CONNECTION**

N/S Scale

- NOTES:
1. Top of eccentric cone to be set at top of subgrade. (Street contractor to set rim to finished grade of street).
  2. All sewer construction to be done in accordance with the Central Grand Valley Sanitation District Specifications.
  3. All construction to be done in accordance with the Colorado Department of Health Specifications.
  4. Contractor is responsible for locating all buried utilities and protecting the same.
  5. If vertical and horizontal clearances are less than state minimums, then concrete encasement may be required on sewer lines where water mains are less than proximity requirements.
  6. All sewer services to extend 10' beyond property line.
  7. Sewer services shall be 10' feet from water services, on the downhill side.

**SEWER QUANTITIES**

- 4255 LF. OF 8" SANITARY SEWER
- 4420 LF. OF 4" SERVICE LINE
- 8675 LF. OF TRENCH COMPACTION
- 2 SHALLOW MANHOLES
- 21 STANDARD MANHOLES
- 128 STANDARD SERVICE CONNECTIONS
- 2 CONNECTIONS TO EXISTING 8" PIPELINE
- 6 SERVICE CONNECTION TO EXISTING 8" LINE