

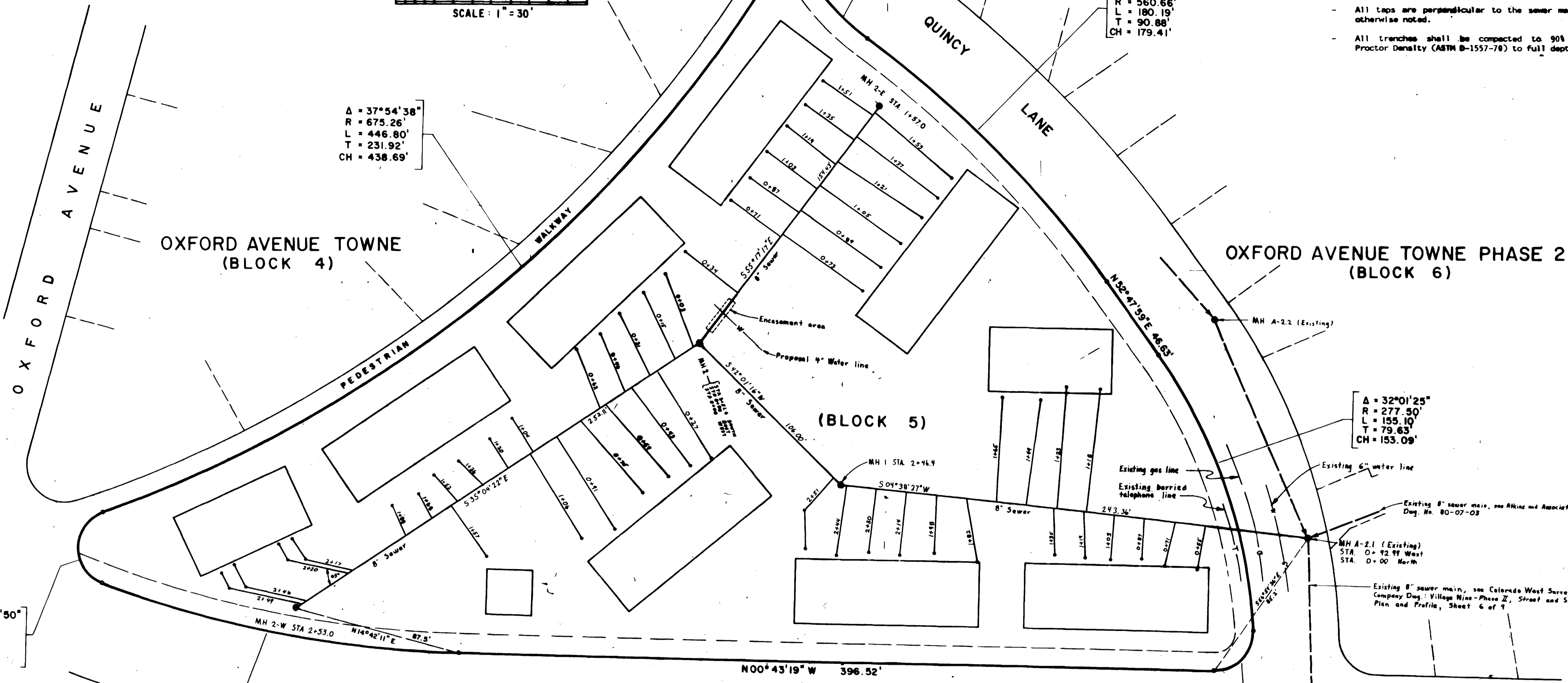
$\Delta = 110^{\circ}08'45''$   
 $R = 20.00'$   
 $L = 38.45'$   
 $T = 28.64'$   
 $CH = 32.79'$

$\Delta = 16^{\circ}22'21''$   
 $R = 122.50'$   
 $L = 35.00'$   
 $T = 17.62'$   
 $CH = 34.89'$

$\Delta = 18^{\circ}24'51''$   
 $R = 560.66'$   
 $L = 180.19'$   
 $T = 90.88'$   
 $CH = 179.41'$

$\Delta = 37^{\circ}54'38''$   
 $R = 675.26'$   
 $L = 446.80'$   
 $T = 231.92'$   
 $CH = 438.69'$

- NOTES:
- Sewer system shall be installed in accordance with policies and specifications of the Orchard Mesa Sanitation District.
  - All taps are perpendicular to the sewer main unless otherwise noted.
  - All trenches shall be compacted to 90% Modified Proctor Density (ASTM D-1557-78) to full depth.



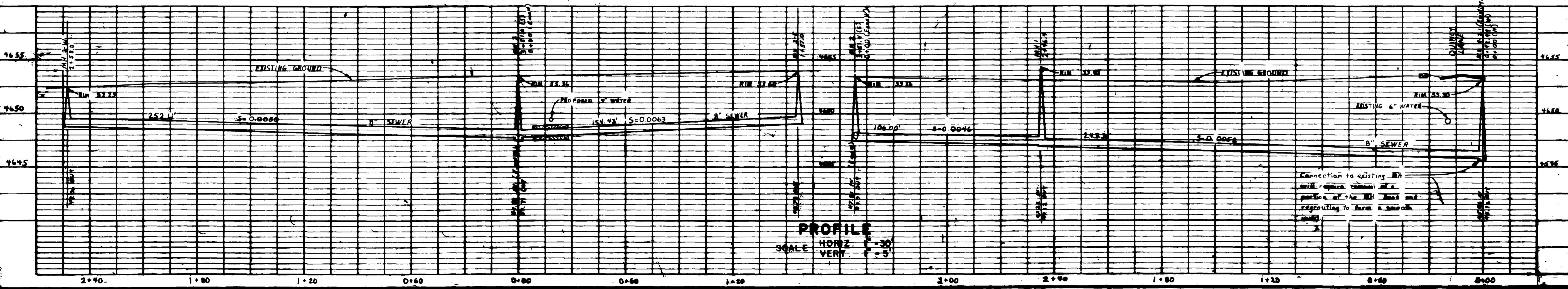
$\Delta = 140^{\circ}03'50''$   
 $R = 20.00'$   
 $L = 48.89'$   
 $T = 35.05'$   
 $CH = 37.59'$

$\Delta = 19^{\circ}10'51''$   
 $R = 572.96'$   
 $L = 191.81'$   
 $T = 96.81'$   
 $CH = 190.91'$

$\Delta = 94^{\circ}27'18''$   
 $R = 20.00'$   
 $L = 32.97'$   
 $T = 21.62'$   
 $CH = 29.36'$

$N00^{\circ}43'19'' W \quad 396.52'$

PLAN



PROFILE  
 SCALE HORIZ. 1" = 30'  
 VERT. 1" = 5'



INFILTRATION DOES NOT EXCEED 200 GAL. / IN. DIA. / MILES / DAY.

AS-BUILT

INSTALLED: JULY, 1982  
 CONTRACTOR: GOPHER CONSTRUCTION

8/26/82 SEWER AS-BUILT D.S.G.  
 WESTERN ENGINEERS, INC.

SEWER PLAN AND PROFILE  
 AS-BUILT  
 DOVERTON CLUB

MESA COUNTY, COLORADO  
 DESIGNED T.K.H. DRAWN D.S.G. CHECKED T.K.H.  
 GRAND JUNCTION, CO. DWS. 775-963-38