

PARAGON ENGINEERING, INC.
 P.O. Box 2872
 Grand Junction, Colorado 81501 (970) 243-3988

E. Bennett
 5/20/81

GRAND JUNCTION WEST WATER AND SANITATION DISTRICT
 LIFT STATION TO STA. 11+50

LEGEND

- Existing Fence
- Existing Gas Line
- Existing Electric Lines
- Existing Sanitary Sewer & Manhole
- Existing Water Main & Size
- Edge of Asphalt
- Sanitary Sewer & Manhole
- 10" Water Line
- Fire Hydrant
- Service Connection

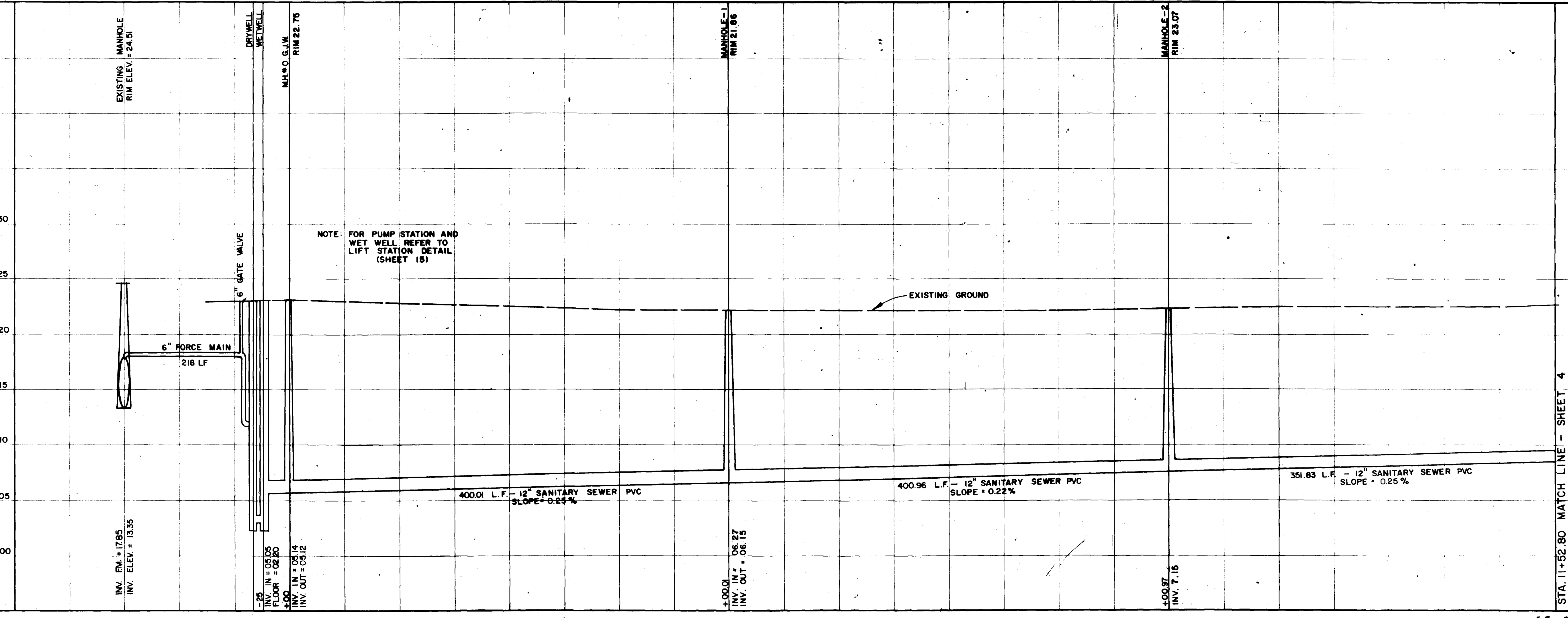
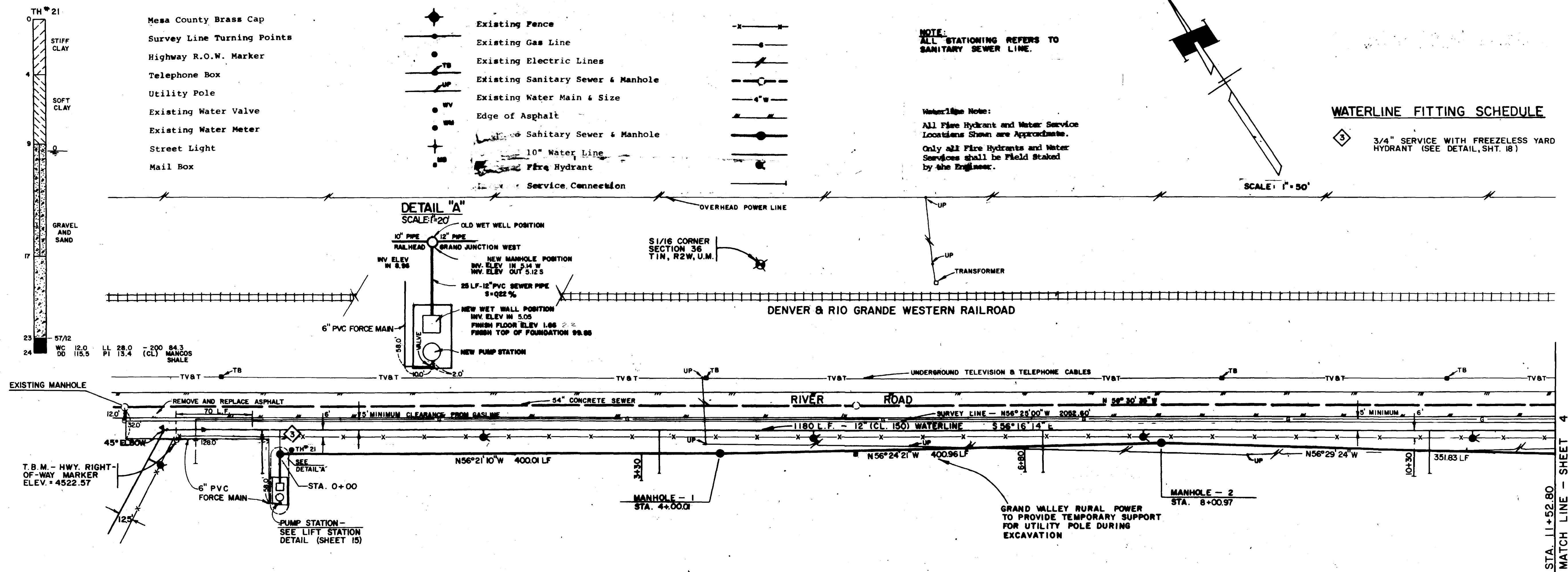
NOTE:
 ALL STATIONING REFERS TO
 SANITARY SEWER LINE.

Waterline Note:
 All Fire Hydrant and Water Service
 Locations Shown are Approximate.
 Only all Fire Hydrants and Water
 Services shall be Field Staked
 by the Engineer.

WATERLINE FITTING SCHEDULE

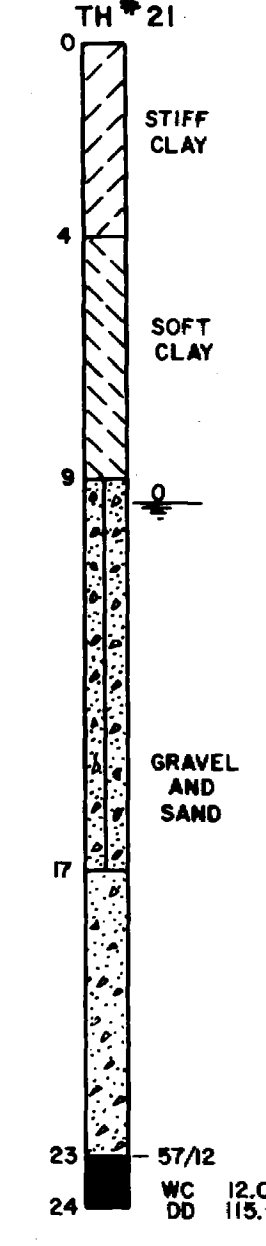
3 3/4" SERVICE WITH FREEZELESS YARD
 HYDRANT (SEE DETAIL, SHT. 18)

SCALE: 1"=50'



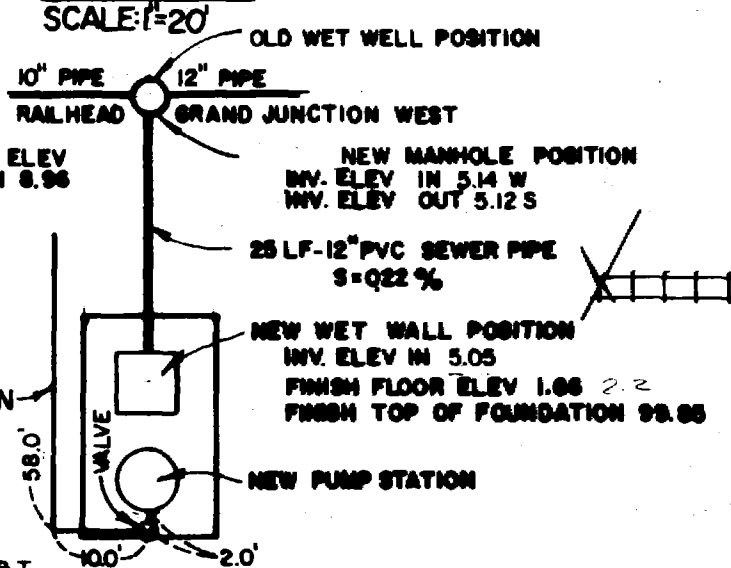
SANITARY SEWER PROFILES
 SCALE - HORIZ.: 1"=50', VERT.: 1"=5'

AS BUILT DRAWINGS
 INVERT ELEV. AS-BUILT FROM WETWELL



- Mesa County Brass Cap
- Survey Line Turning Points
- Highway R.O.W. Marker
- Telephone Box
- Utility Pole
- Existing Water Valve
- Existing Water Meter
- Street Light
- Mail Box

DETAIL "A"
 SCALE: 1"=20'



WC 12.0 LL 28.0 - 200 84.3
 DD 115.5 PI 13.4 (CL) MANCOS SHALE

T.B.M. - HWY. RIGHT-
 OF-WAY MARKER
 ELEV. = 4522.57

PUMP STATION -
 SEE LIFT STATION
 DETAIL (SHEET 15)

GRAND VALLEY RURAL POWER
 TO PROVIDE TEMPORARY SUPPORT
 FOR UTILITY POLE DURING
 EXCAVATION

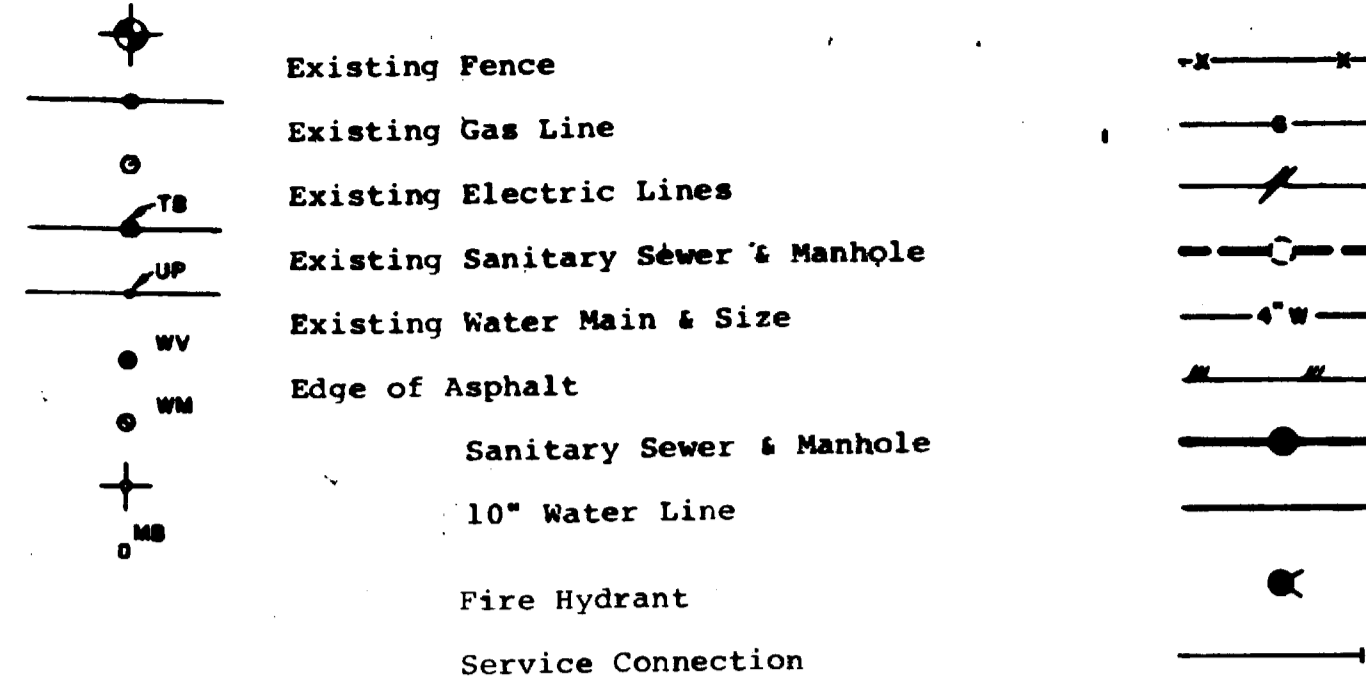
NOTE: FOR PUMP STATION AND
 WET WELL REFER TO
 LIFT STATION DETAIL
 (SHEET 15)

STA. 11+52.80 MATCH LINE - SHEET 4

R. B. ...

- Mesa County Brass Cap
- Survey Line Turning Points
- Highway R.O.W. Marker
- Telephone Box
- Utility Pole
- Existing Water Valve
- Existing Water Meter
- Street Light
- Mail Box

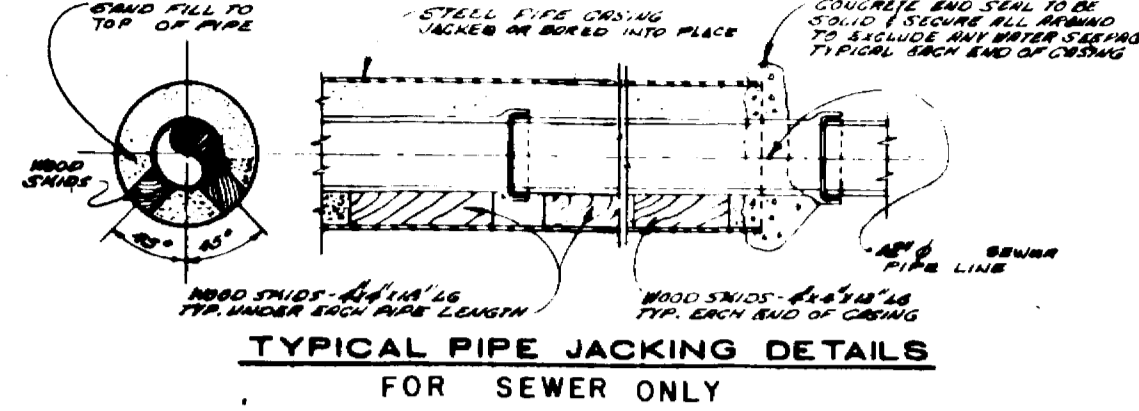
LEGEND



SEE SHEET 5

2. UTILITY EXPLORATION AREA

SEE SHEET 6



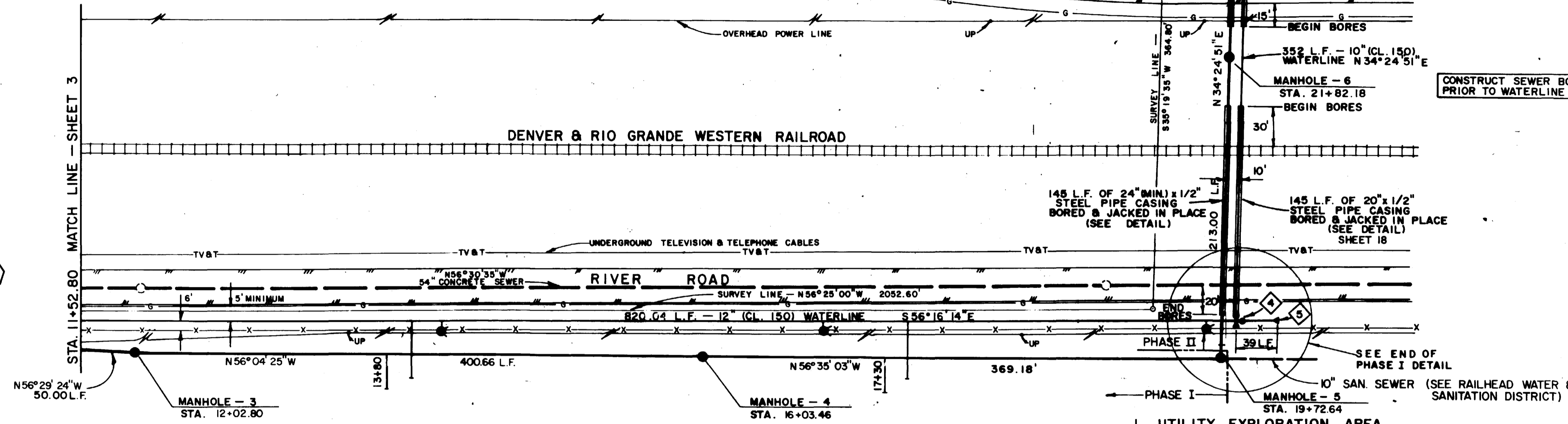
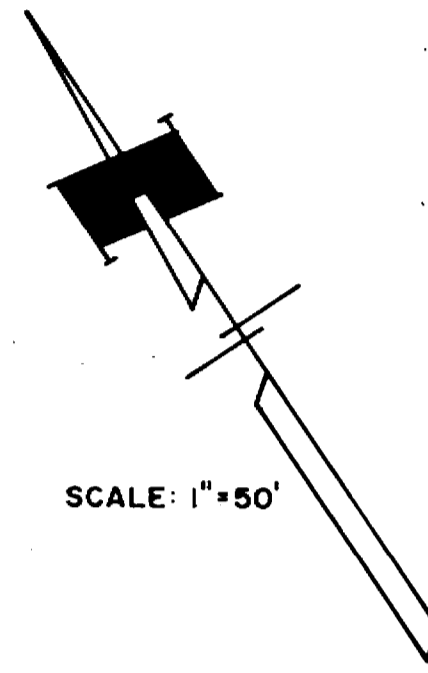
NOTE:
ALL STATIONING REFERS TO THE SANITARY SEWER LINE.

WATERLINE FITTING SCHEDULE

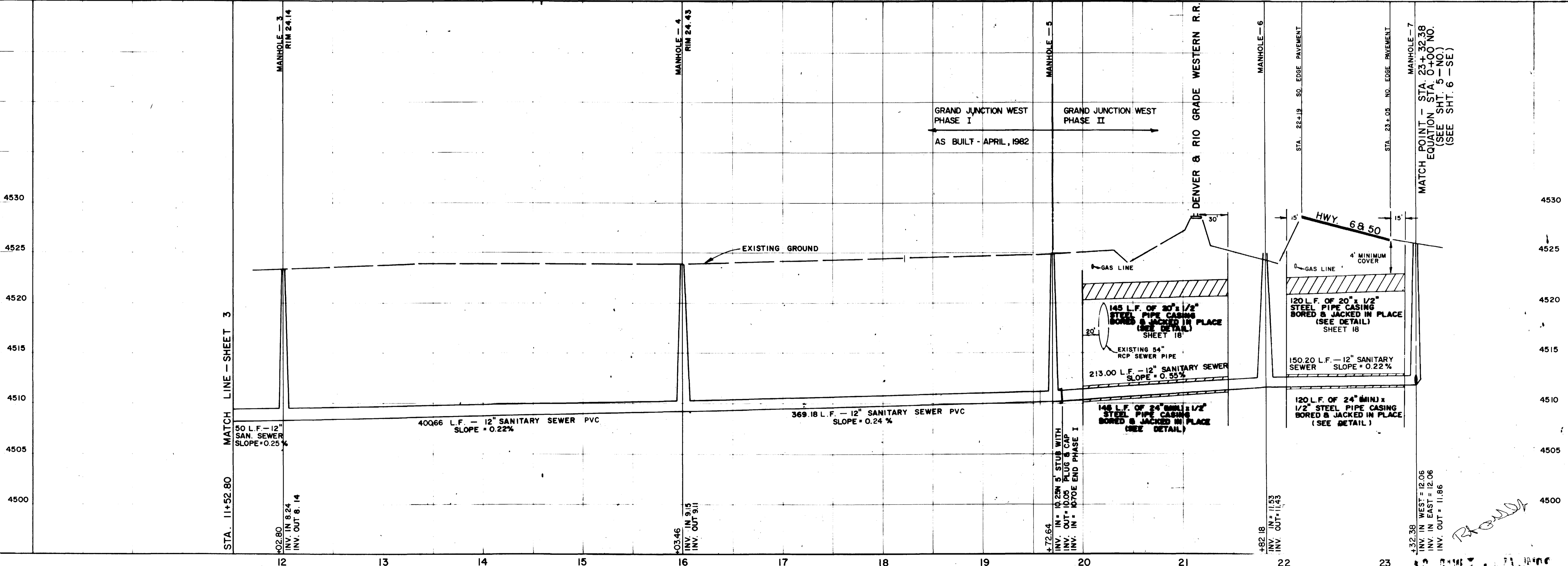
- 1 TEE WITH INLINE GATE VALVE, RING TITE JOINT CONNECTION, VALVE BOX ASSEMBLY AND THRUST BLOCK, 10" x 12" REDUCER FLANGE x RING TITE VALVE AND VALVE BOX ASSEMBLY
- 2 CAST IRON PLUG AND THRUST BLOCK (SEE DETAIL, SHT. 18)
- 3 FLANGE x RING TITE VALVE, TEE AND VALVE BOX ASSEMBLY
- 4 INLINE VALVE WITH 10" x 8" REDUCER AND VALVE BOX ASSEMBLY

Waterline Note:

All Fire Hydrant and Water Service Locations Shown are Approximate
All Fire Hydrants and Water Services shall be Field Staked by the Engineer.



1. UTILITY EXPLORATION AREA



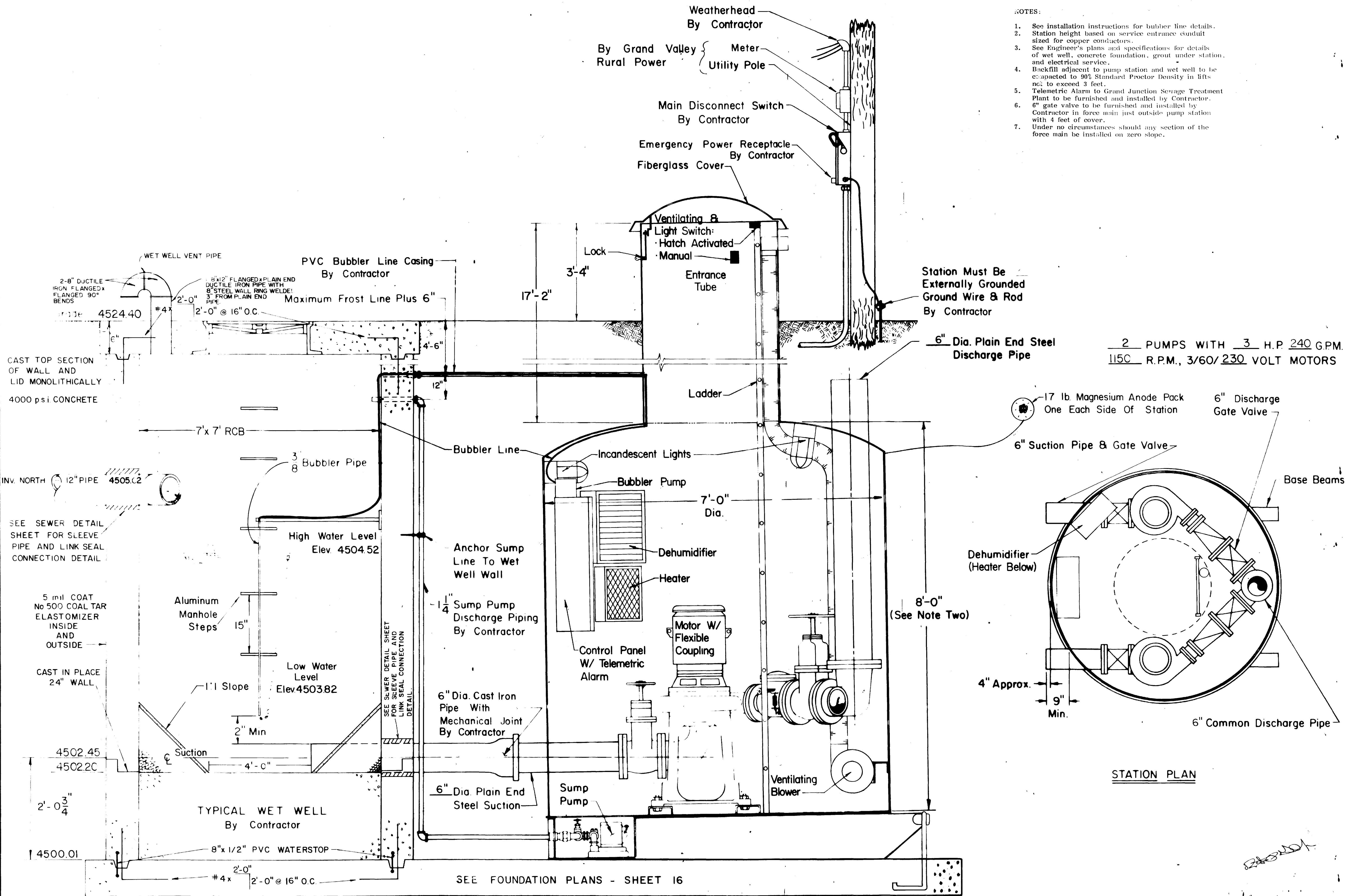
SANITARY SEWER PROFILES
SCALE - HORIZ.: 1" = 50', VERT.: 1" = 5'

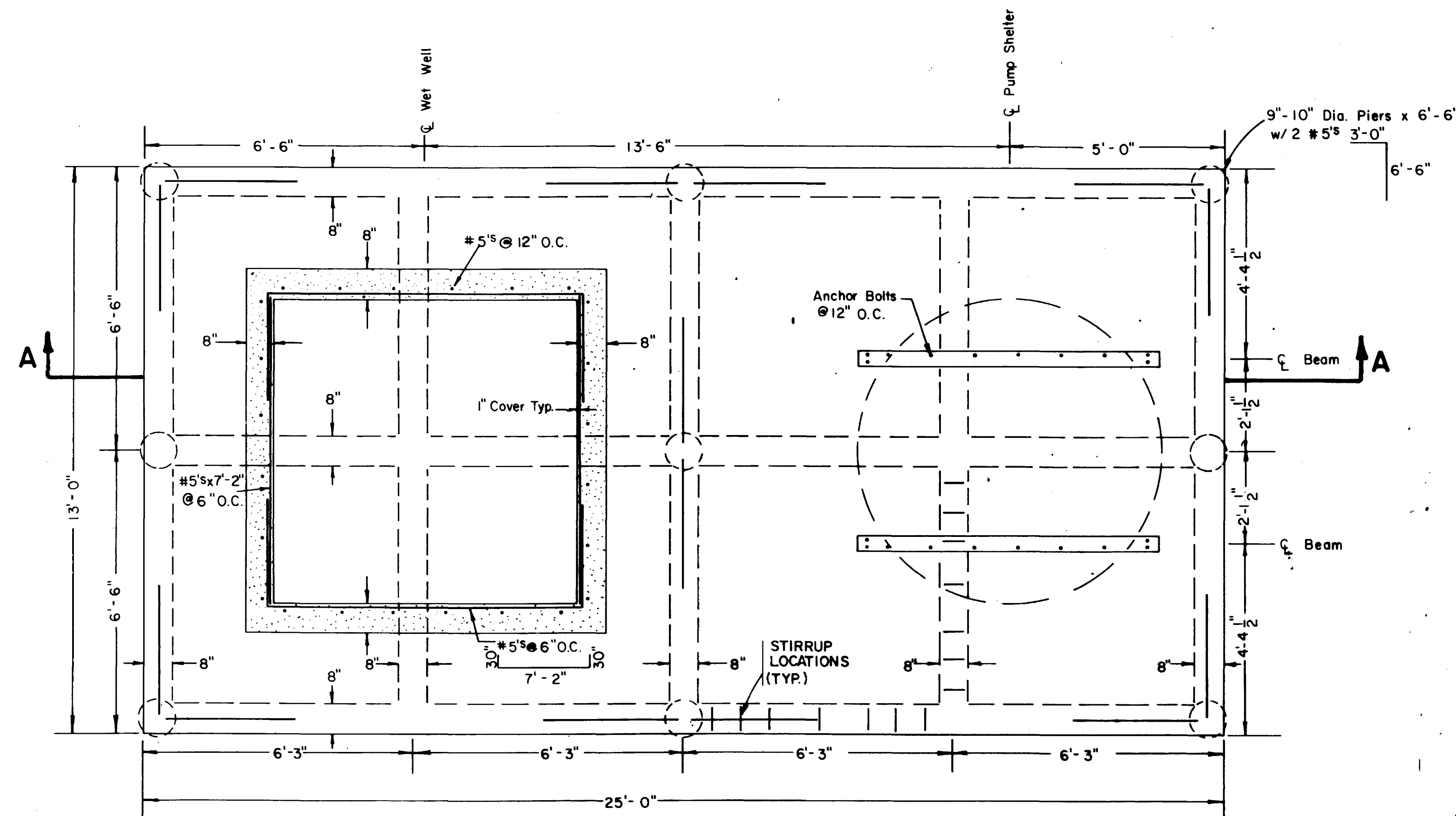
WEB
JANUARY, 1981 JSF
HORIZ.: 1" = 50'
VERT.: 1" = 5'

SEPT 1981 PNO
A-20-82 LDR
AS BUILT REV

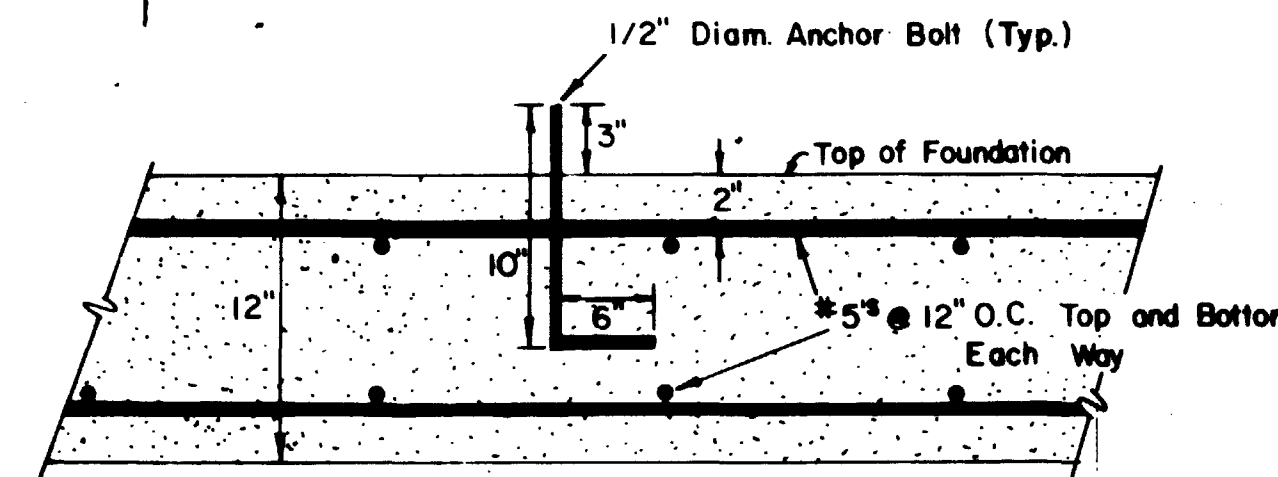
William E. B...
5/20/81

GRAND JUNCTION WEST WATER AND SANITATION DISTRICT
STA. 11+50 TO STA. 23+32.38
(MANHOLE - 7 = STA. 0+00 N)



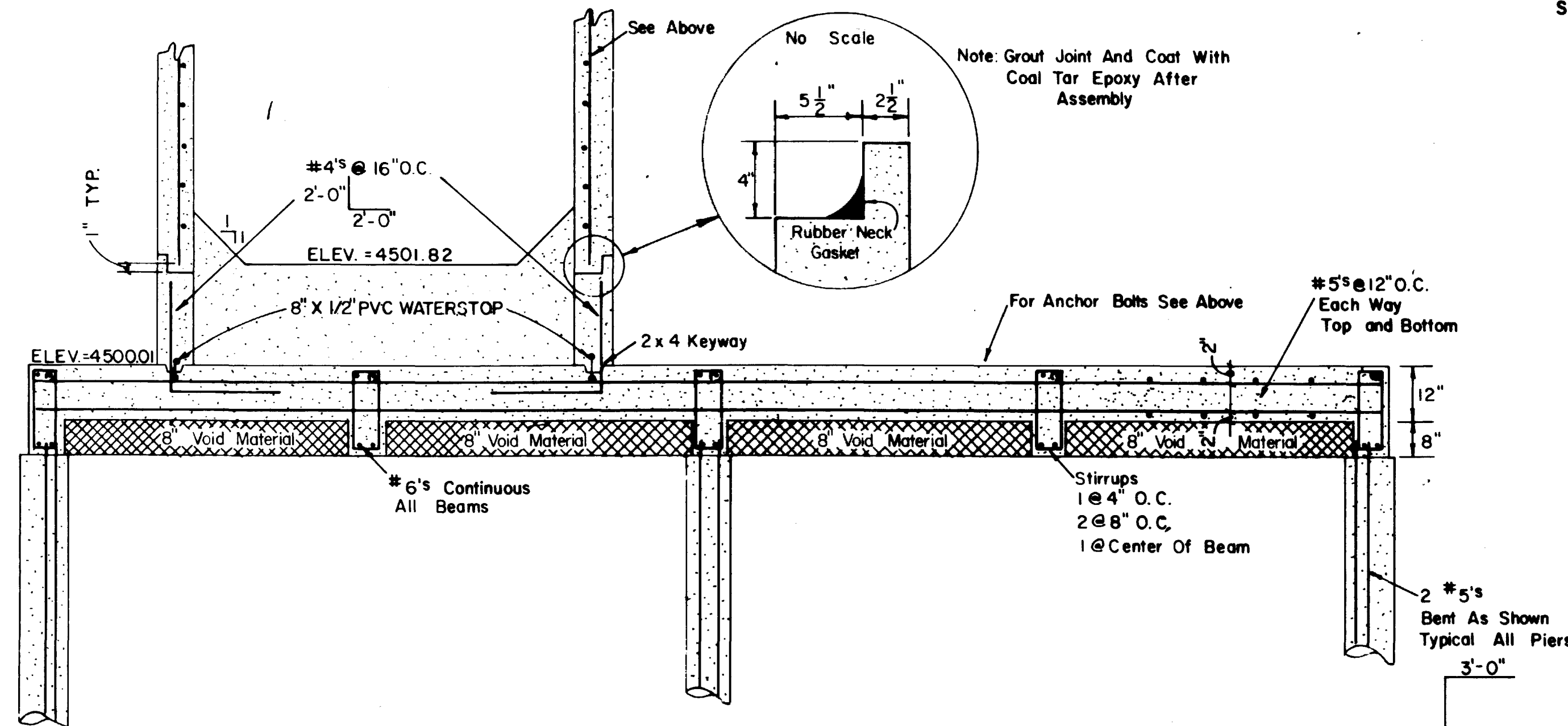


FOUNDATION PLAN
SCALE 1/2" = 1'

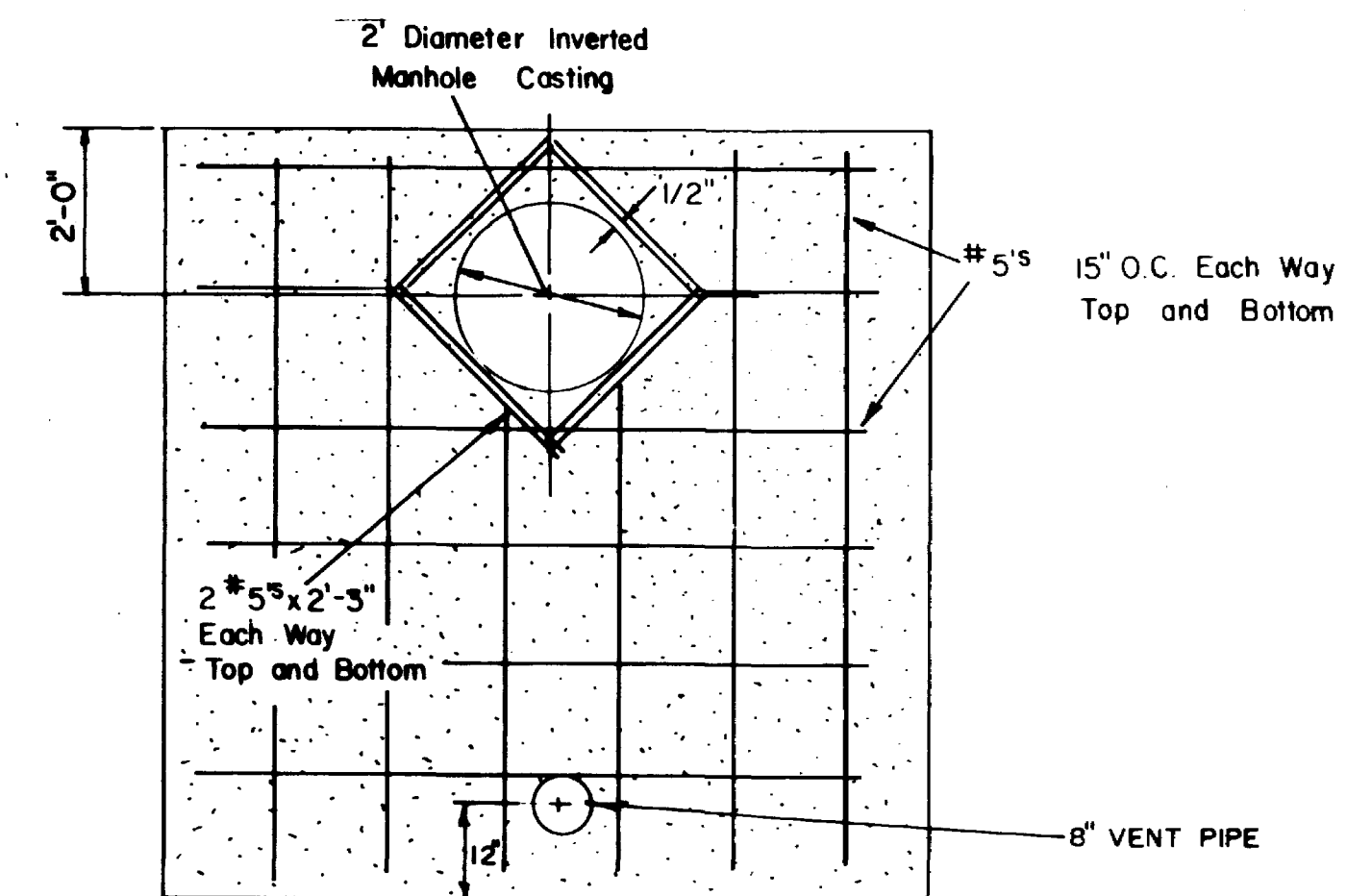


ANCHOR BOLT DETAIL
SCALE 1 1/2" = 1'

NOTE:
SEE SHEET 15 & 17
FOR SUCTION LINE
CONNECTIONS



SECTION A-A
SCALE 1/2" = 1'



TOP OF WET WELL DETAIL
SCALE 1/2" = 1'

General Notes:

- I. Concrete
 - A. All concrete is to have an F'c = 4,000 psi at 28 days and is to be made with Type II Modified cement. Under no circumstances should calcium chloride ever be added to a Type II cement.
 - B. Detail all reinforcement and provide bar supports in accordance with A.C.I. Detailing Manual, latest edition.
 - C. Vibrators or other suitable mechanical means must be used to consolidate concrete.
 - D. Four test cylinders per truck shall be required.
- II. Reinforcement
 - A. All reinforcement shall be Grade 60 new billet steel.
 - B. When reinforcing steel is to be spliced, the following is the minimum lap splice acceptable:

No.'s.	Length
3	20"
4	20"
5	26"
6	33"
7	40"
8	48"
 - C. All reinforcing shall be continuous.
 - D. Reinforcement Protection, Unless noted.
 - When concrete is placed against earth ... 3"
 - When concrete is placed in forms, but exposed to earth or weather ... 2"
 - When concrete is placed in forms, but not exposed to earth or weather ... 1"
- III. Soils data compiled by Geo Testing Laboratories, Inc., Job #4-4. Copy of soils report available upon request.
- IV. The foundation site shall be kept dry during excavation and construction of the foundation.
- V. Anchor bolts shall be 1/2" diameter x 10" and meet ASTM A-325 standard.
- VI. All open footing excavation must be inspected prior to the placing of forms and pouring of concrete to establish that proper design bearing material has been reached and that no debris, soft springs, areas of unusually low density are located within the excavated earth.

AS BUILT DRAWINGS