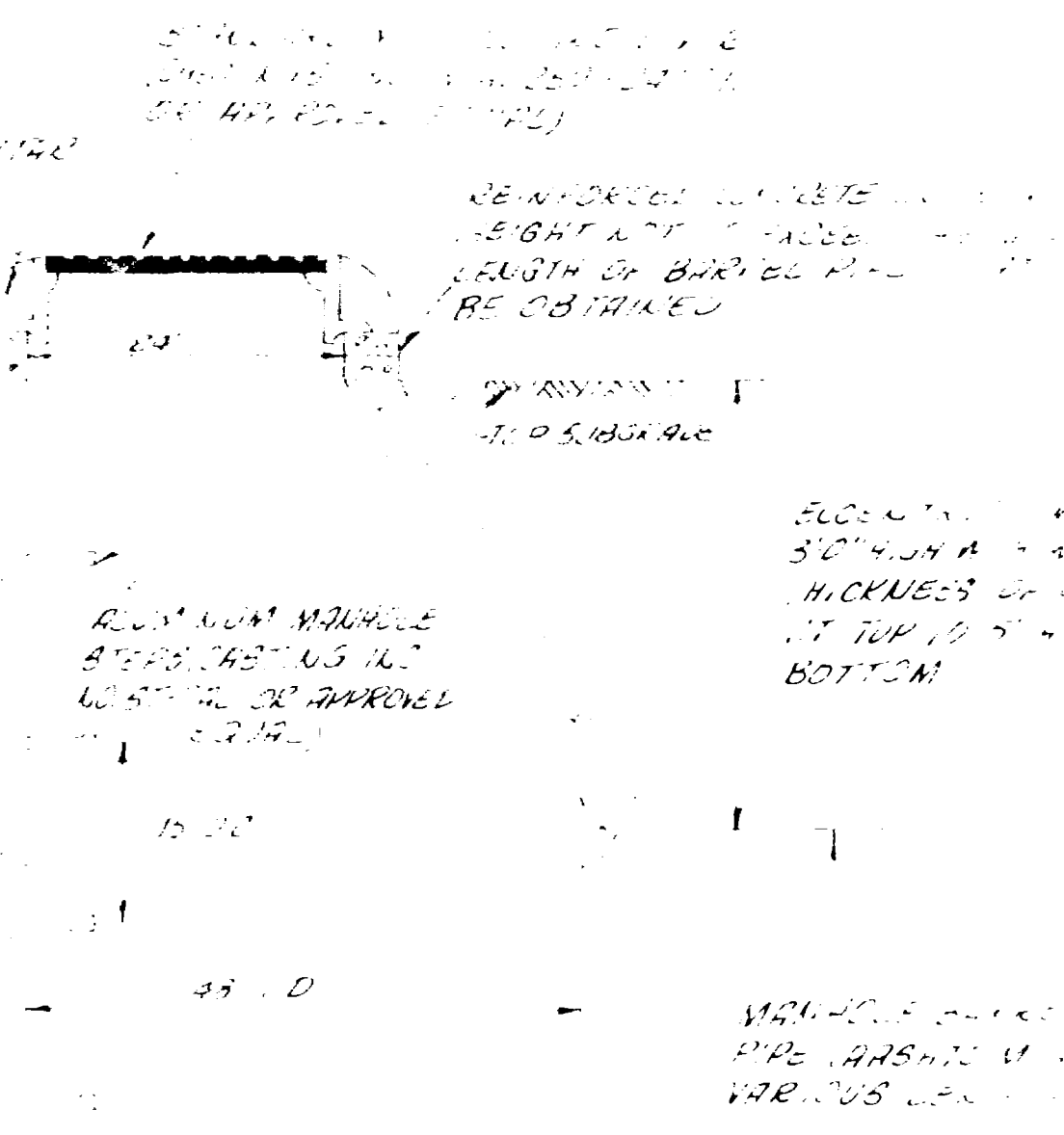
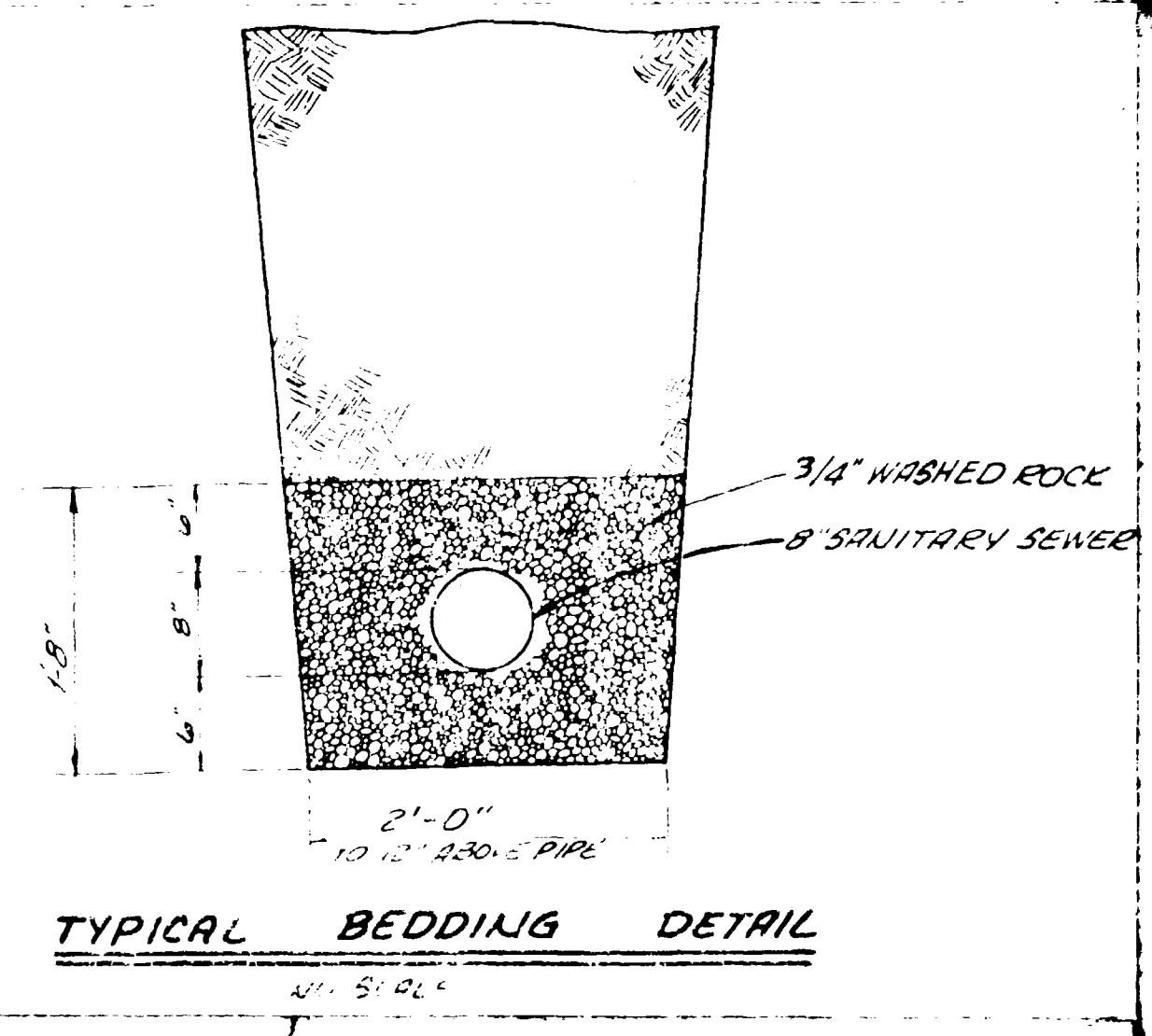
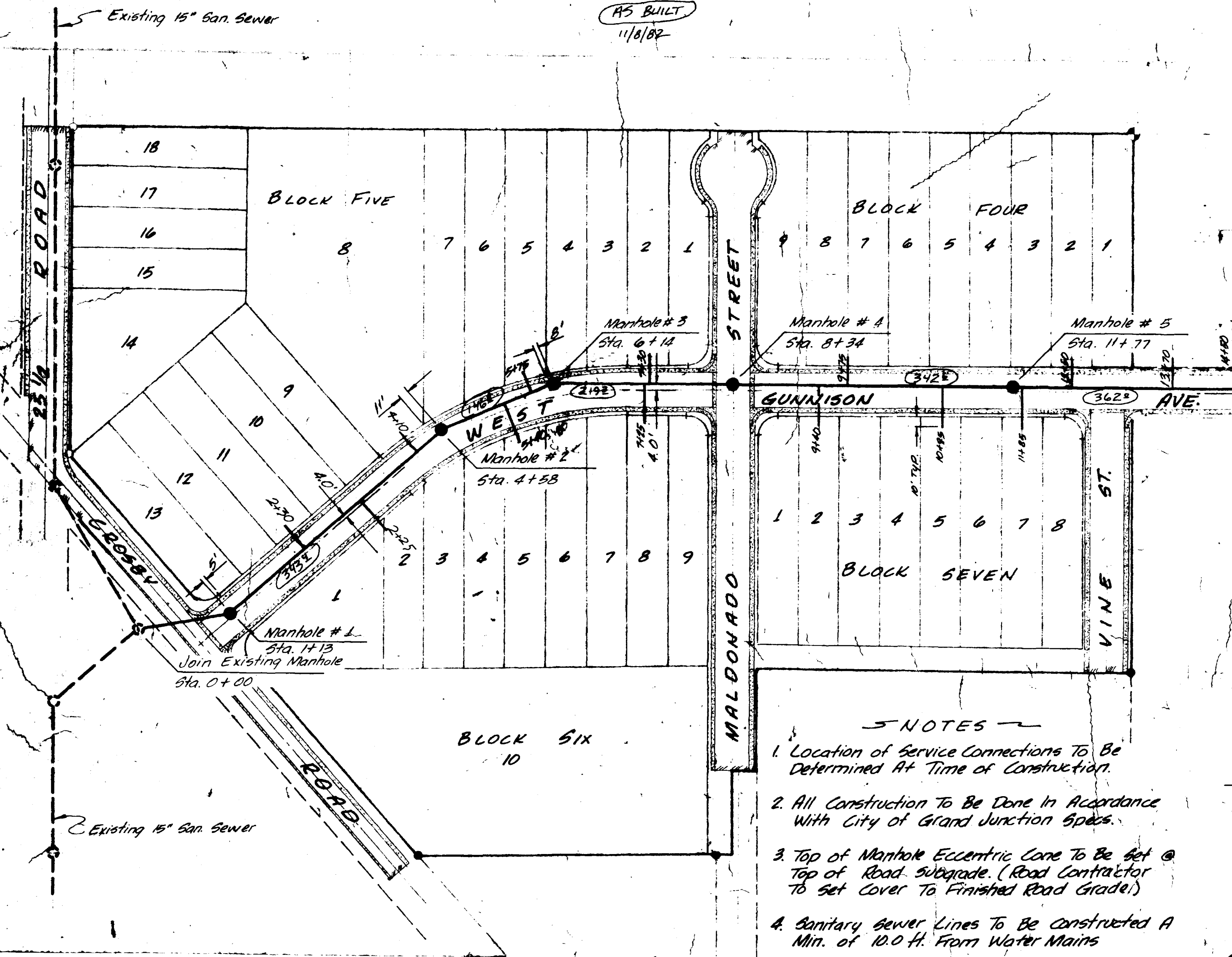


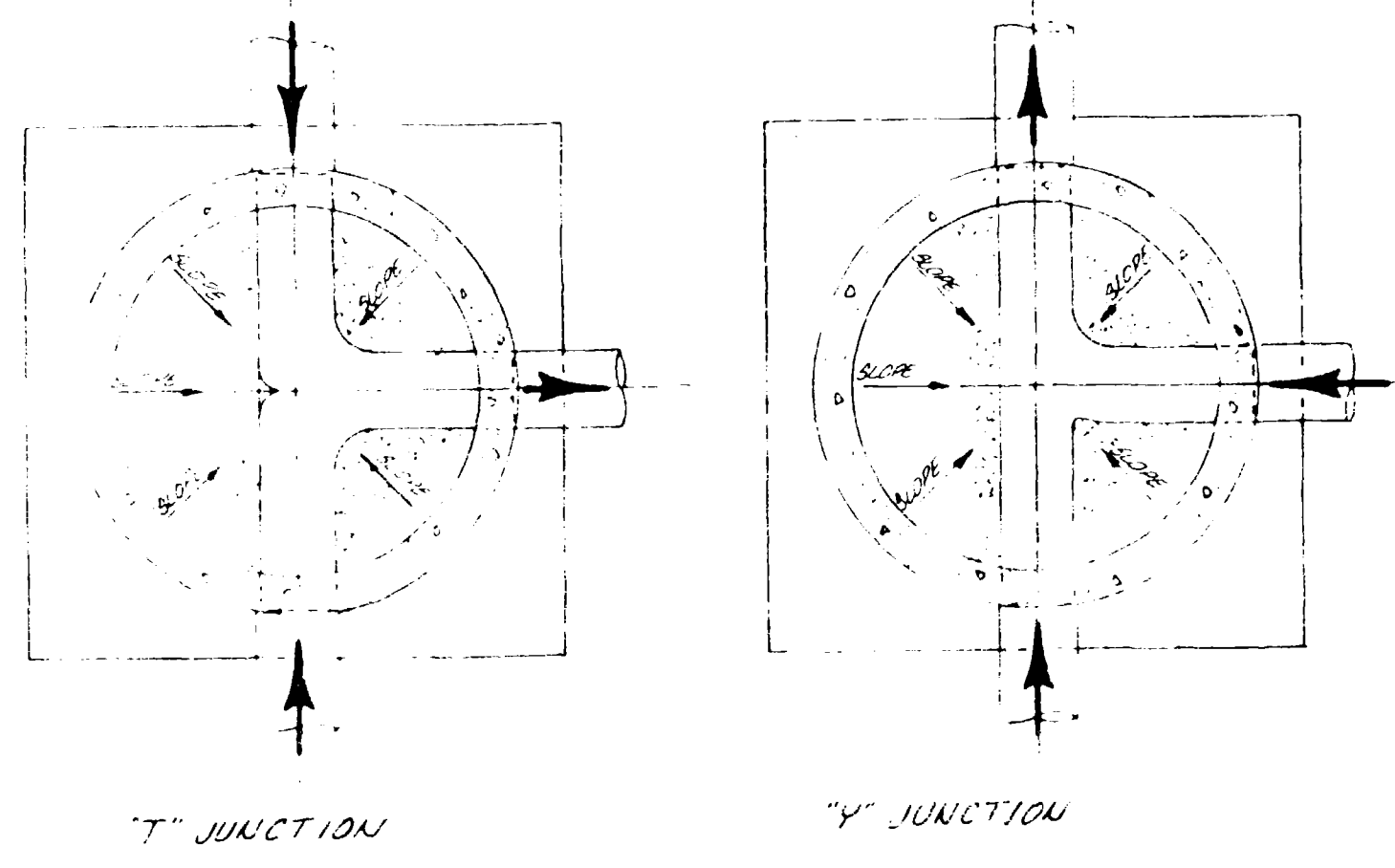
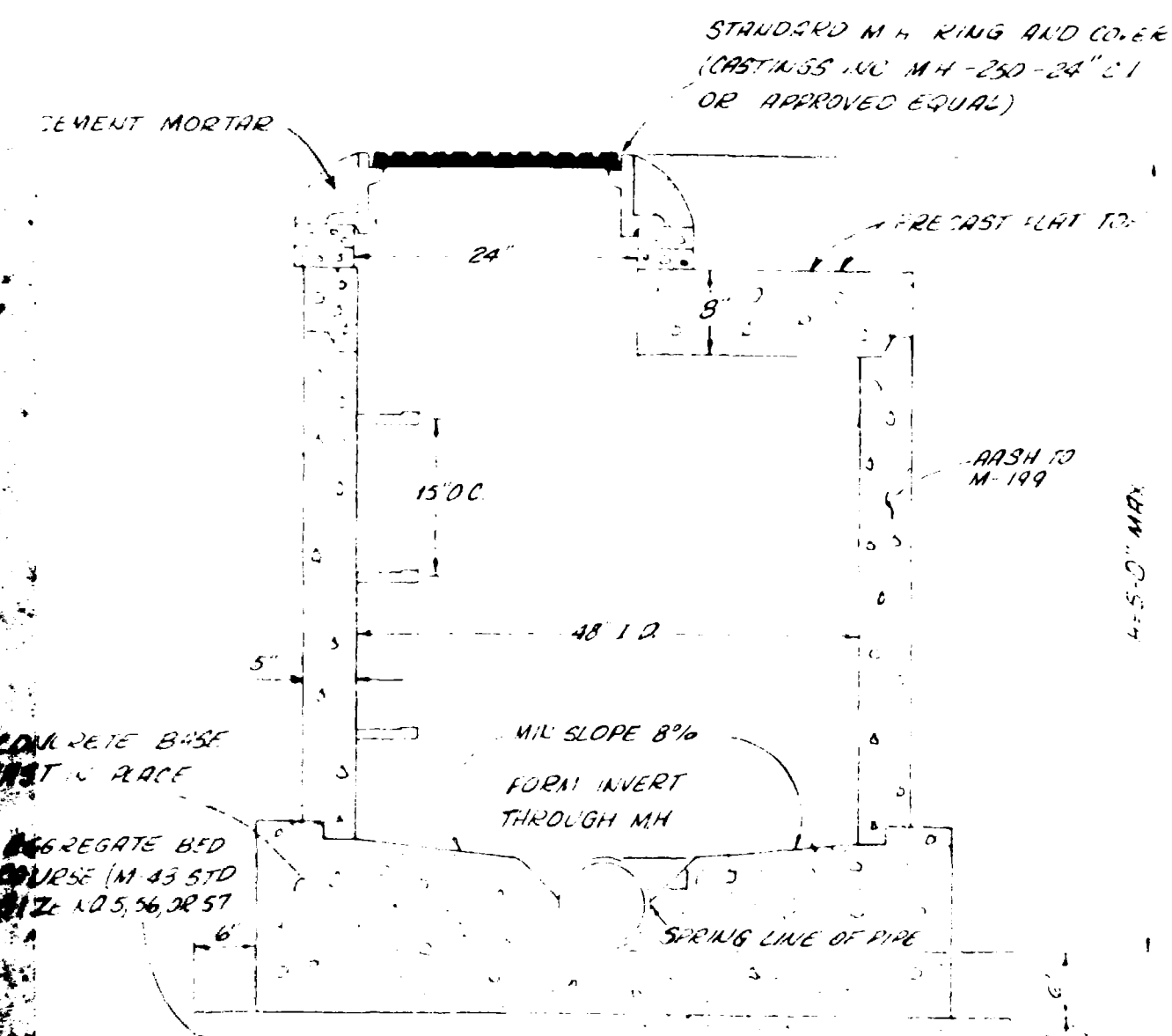
AS BUILT  
11/8/82



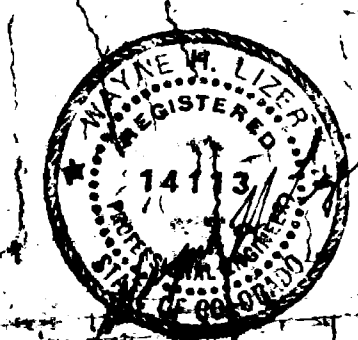
- NOTES
1. Location of Service Connections To Be Determined At Time of Construction.
  2. All Construction To Be Done In Accordance With City of Grand Junction Specs.
  3. Top of Manhole Eccentric Core To Be Set @ Top of Road Subgrade. (Road Contractor To Set Cover To Finished Road Grade.)
  4. Sanitary sewer Lines To Be constructed A Min. of 10.0 Ft. From Water Mains
  5. Service Lines Shall Extend A Min. of 5.0 Ft. Beyond Road R.O.W.

BENCH MARK:  
Nail In Utility Pole At  
Ranch St. & Curry Ave.  
Elev. 4555.56

Scale: 1" = 100'



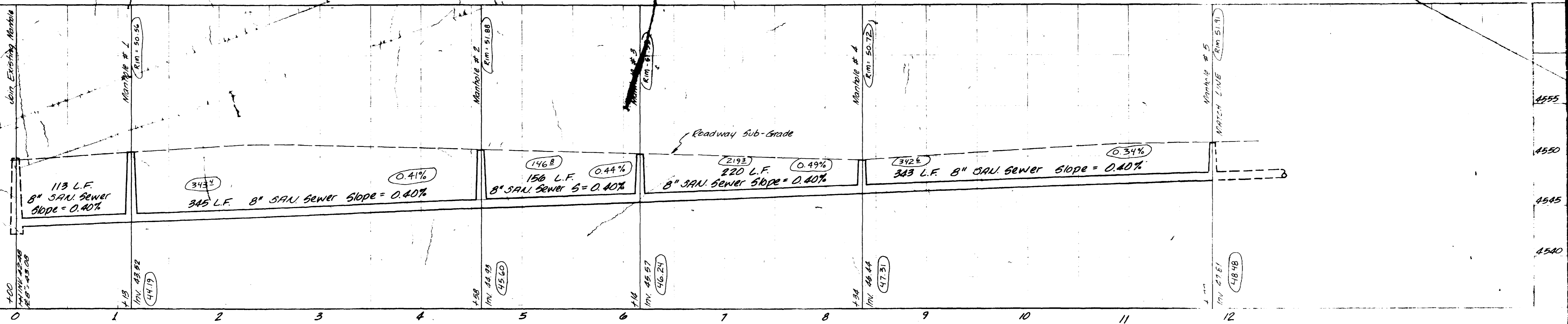
No E.F. shown



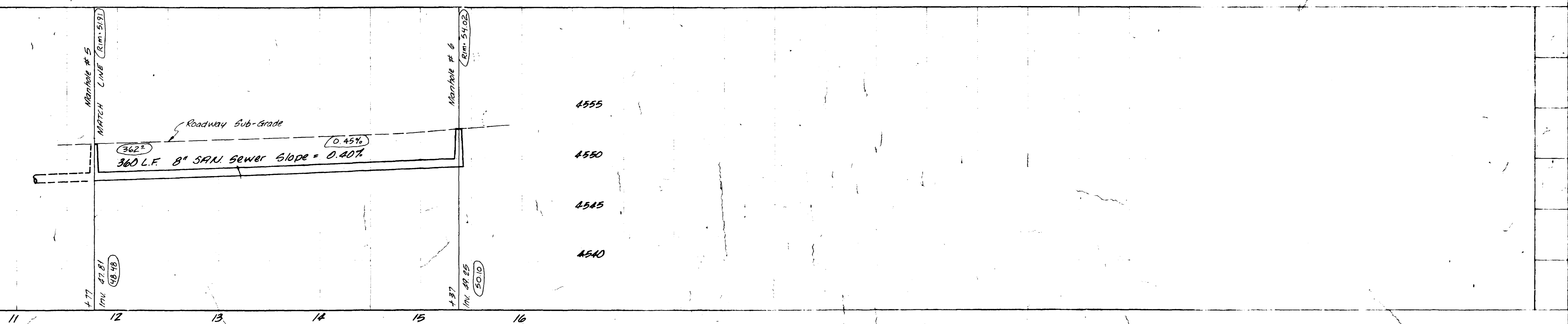
APPROVED: \_\_\_\_\_  
Grand Junction City Utility Engineer

GRAND JUNCTION ENGINEERING, INC.  
 1978  
 SANITARY SEWER PLAN  
 6 AND 50 WEST SUBDIVISION  
 GRAND JUNCTION, COLORADO  
 SHEET

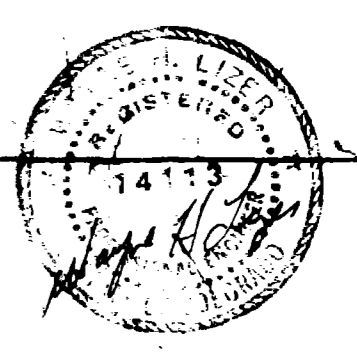
AS BUILT  
11/8/02



WEST GUNNISON AVENUE



AS BUILT DRAWINGS



PARSONS ENGINEERING  
 2700 E. 17th Ave., Suite 100, Denver, CO 80202  
 PHONE 303.733.1000  
 FAX 303.733.1001  
 WWW.PARSONS.COM  
 SANITARY SEWER PROFILES  
 9 and 50 WEST SUBDIVISION  
 FILING TWO  
 GRAND JUNCTION, COLORADO  
 SHEET  
 OF 2