

LOT 25 BLOCK NINE
FILING SIX
RIDGES SUBDIVISION

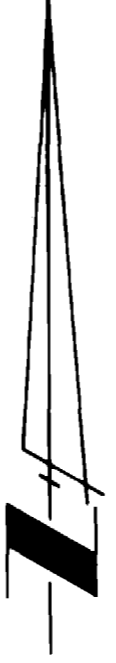
Nichols Associates, Inc. has inspected this sewer system and found that infiltration and exfiltration are within the limits required by the City of Grand Junction.

Terry Nichols
Terry Nichols P.E. No. 12093



LEGEND

- w.v. ⓧ DOMESTIC POTABLE WATER VALVE
- c.s. ⓧ CURB STOP
- i.v. ⓧ IRRIGATION VALVE
- ⓧ FIRE HYDRANT
- MH-1 ○ MAN HOLE



SHEET NUMBER
OF

PROJECT NUMBER
2724

SCALE
1 inch = 30 feet

DATE DRAWN
MAY 3, 1984

**COLUMBINE VILLAGE
AS BUILT SEWER & WATER LINES**



CIVIL ENGINEERING · PHOTOGRAMMETRY · SURVEYING
P.O. Box 2327 · Grand Junction · Colorado · 81502 · Phone 303-243-8975

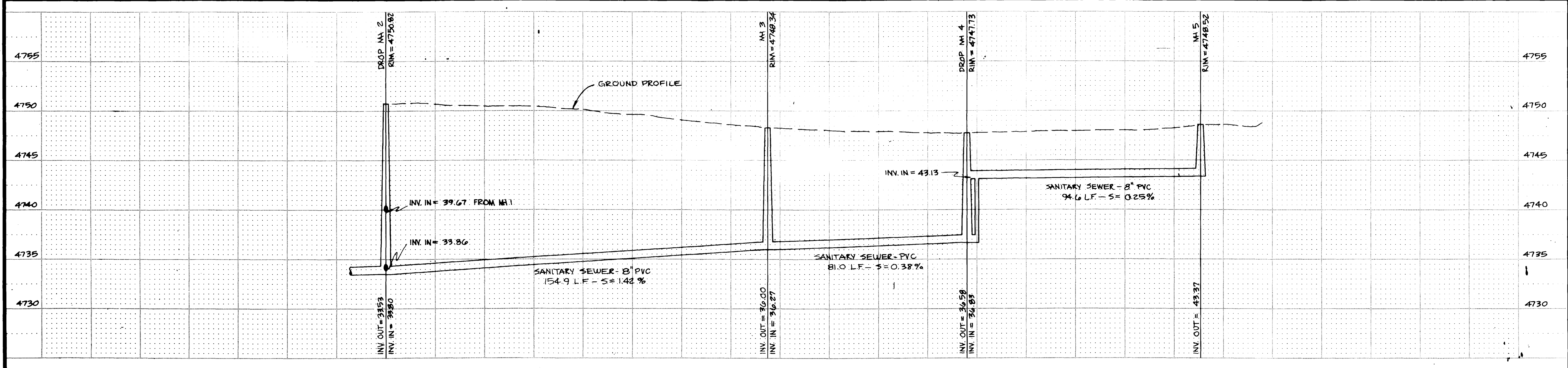
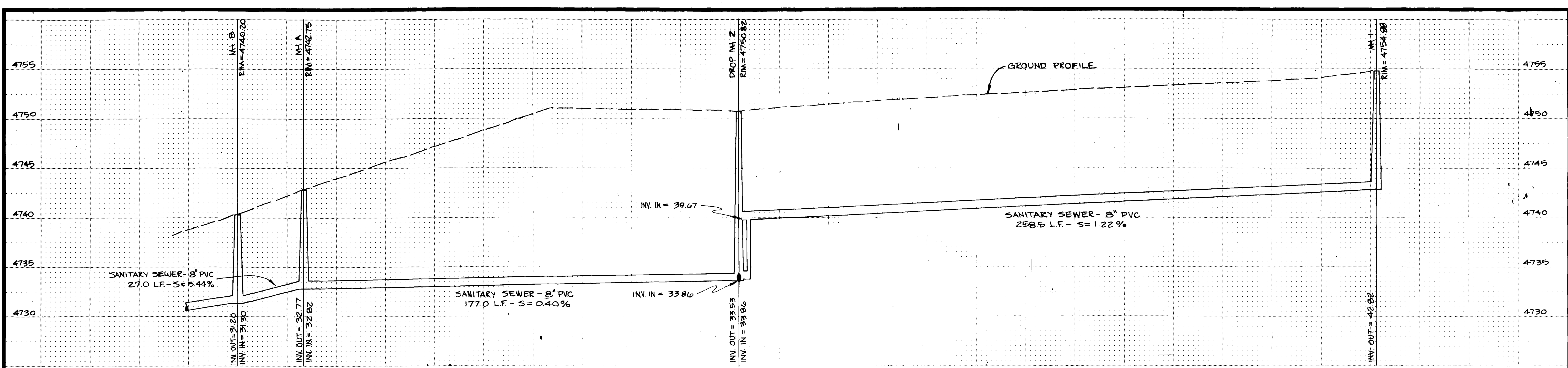
REVISIONS

NO.	DATE	REMARKS	BY

DESIGNED BY
BECK-SHRUM & ASSOCIATES, INC.

DRAWN BY
P. ROWE

SURVEY DATE



DESIGNED BY
BELL-SHAW ASSOC., INC.

DRAWN BY
M. COSTANZO

SURVEY DATE
APRIL 27, 1984

REVISIONS	
NO.	DATE

COLUMBINE VILLAGE
AS BUILT SEWER PROFILE

NICHOLS ASSOCIATES, INC. ENGINEERS - PLANNERS
710 Morrison Drive, P.O. Box 1881, Grand Junction, Colorado 81501 Phone 303-243-8976

DATE DRAWN
MAY 3, 1984

SCALE
1" = 5' VERT.
1" = 20' HORZ.

PROJECT NUMBER
2724

SHEET NUMBER
OF