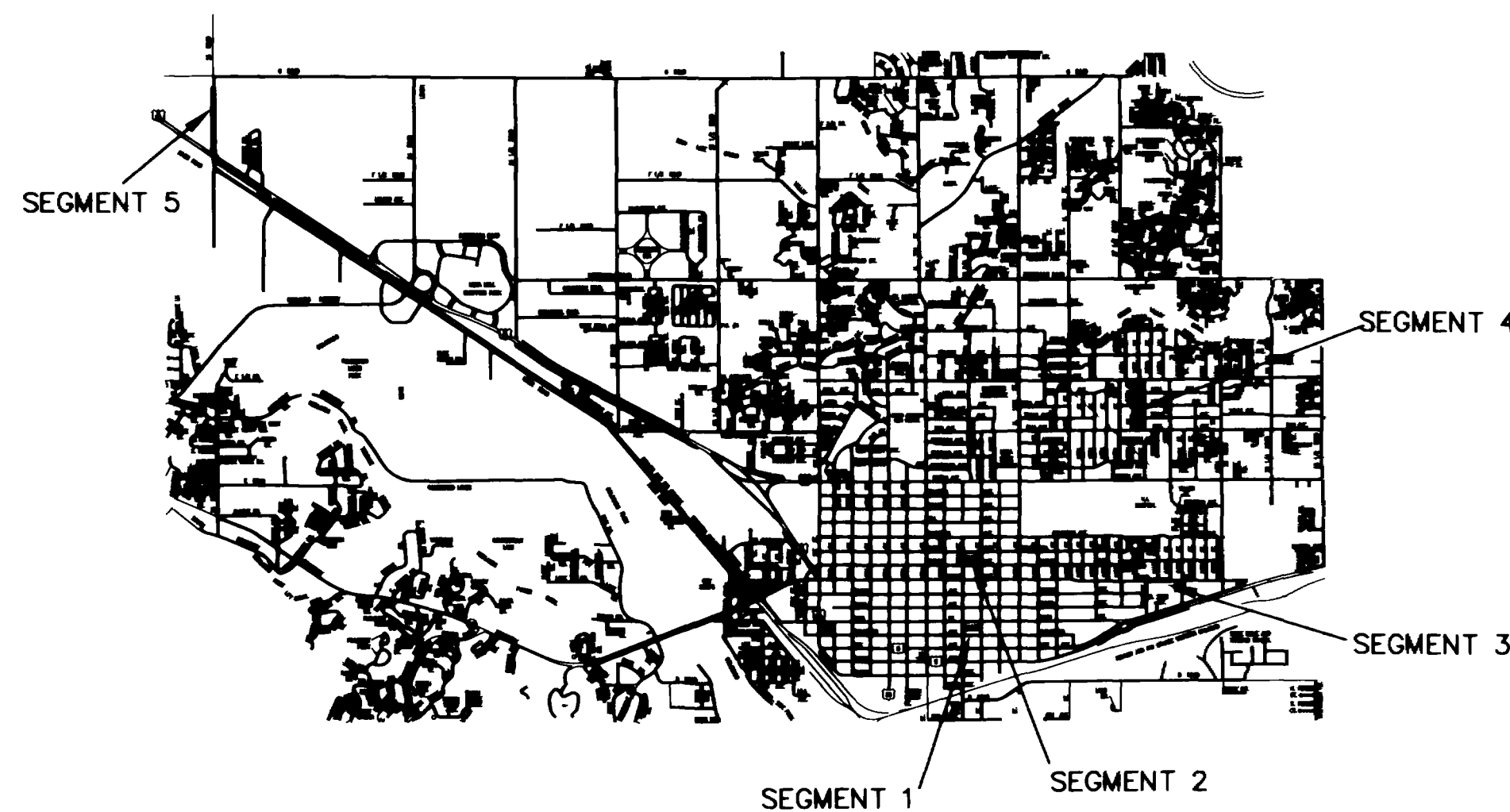


CITY OF GRAND JUNCTION

PLANS FOR
CONSTRUCTION
OF

1994 SEWER LINE REPLACEMENT AND EXTENSION

AUGUST 1994



VICINITY MAP

NO.	TITLE
1	TITLE
2	SUMMARY OF APPROXIMATE QUANTITIES AND GENERAL CONSTRUCTION NOTES
3	REPLACEMENT BETWEEN 9TH AND 10TH MAIN AND COLORADO
4	REPLACEMENT BETWEEN 9TH AND 10TH CHIPETA AND OURAY
5	REPLACEMENT ON GRAND AVENUE
6-8	REPLACEMENT BETWEEN 20TH & 21ST ELM AND ORCHARD
9-12	EXTENSION ALONG 23 ROAD
13	DETAILS
14-15	CITY OF GRAND JUNCTION STANDARDS

DISCLAIMER: FIELD VERIFY ALL PIPE SIZES, MATERIALS AND LOCATIONS
PRIOR TO ANY CONSTRUCTION WORK. THE CITY OF GRAND JUNCTION IS
NOT RESPONSIBLE FOR ANY INACCURACIES IN AS-BUILT RECORDS.

BANNER

BANNER ASSOCIATES, INC. • CONSULTING ENGINEERS & ARCHITECTS
2777 CROSSROADS BOULEVARD • GRAND JUNCTION, CO 81506 • (303) 243-2242

JOB NO. 8301-01

AS CONSTRUCTED

5-12-95

02084901.tif

SUMMARY OF APPROXIMATE QUANTITIES

Ref. No.	Contract Item	Unit	Quantity
202	Sawcut As Necessary & Remove Concrete Curb, Gutter, Fillets, Pans, Sidewalks, Driveways, & Slabs	SQ. YD.	118
202	Cut, Remove, and Dispose of Existing Asphalt Pavement	SQ. YD.	4030
202	Remove and Dispose Existing Incinerators	EA.	6
202	Remove and Dispose Sewer Manhole; Salvage Ring and Cover	EA.	13
208	Dust Control	L. S.	1
210	Reset Manhole Ring and Cover to Grade	EA.	9
208	Pit Run Trench Backfill Material	TON	3380
208	Granular Stabilization Material Under Sewer Pipe (Where Authorized, Including Over Excavation)	TON	416
304	Aggregate Base Course (Class 6) (Haul, Water & Compaction) 6" Thickness	SQ. YD.	3015
304	Aggregate Base Course (Class 6) (Haul, Water & Compaction) 6" Thickness	SQ. YD.	2850
403	Hot Bituminous Pavement (Grading C) (Haul & Compaction) 3" Thickness	SQ. YD.	2757
420	Geotextile Construction Fabric	SQ. YD.	150
603	4" Dia. PVC Sewer Service Pipe, ASTM D3034, SDR 35 (Excavation, Backfill, Granular Bedding Material)	L. F.	582
603	8" Dia. PVC Sewer Service Pipe, ASTM D3034, SDR 35 (Excavation, Backfill, Granular Bedding Material)	L. F.	3814
603	12" Dia. PVC Sewer Service Pipe, ASTM D3034, SDR 35 (Excavation, Backfill, Granular Bedding Material)	L. F.	948
603	Locate Existing Sewer Service Lines	EA.	56
603	Service Connection (Wye or Saddle)	EA.	56
604	Standard Shallow, 4' Dia. Manhole (Less than 5' Depth) (Including Excavation and Backfill)	EA.	2
604	Standard, 4' Dia. Manhole (W/O Base) (Including Excavation and Backfill)	EA.	10
604	Standard, 4' Dia. Manhole (With Base) (Including Excavation and Backfill)	EA.	8
608	5' Wide Sidewalk (Including 6" of Aggregate Base Course and Subgrade Preparation)	S.Y.	35
608	5' Wide Sidewalk, Curb and Gutter. (Including 6" of Aggregate Base Course and Subgrade Preparation)	S.Y.	20
608	Concrete Driveway Sections (Including 6" of Aggregate Base Course and Subgrade Preparation)	S.Y.	128
625	Construction Surveying, Including Construction Control Staking, As-Built Survey, and Preparation of As-Built Plans	L. S.	1
626	Mobilization, Bonds, Incidentals	L. S.	1
627	Pavement Marking Paint	L. F.	1710
630	Construction Traffic Control and Project Signs	L. S.	1
---	Weekly Informational Newsletters, Preparation and Distribution	L. S.	1
---	Concrete Sewer Line Encasement	EA.	1
---	Connection to Existing Manhole	EA.	2

GENERAL CONSTRUCTION NOTES

All construction shall be in accordance with the City of Grand Junction Standard Specifications for Road and Bridge Construction. All materials, performance, and quality of work shall conform to the requirements of these Standards and Specifications, the applicable sections of the most current edition of the Colorado Department of Transportation, Standard Specifications for Road and Bridge Construction, Colorado Standard Plans M & S Standards, and the American Association of State Highway and Transportation Officials.

If the Standards and Specifications do not cover a specific situation during the course of the work, applicable specifications must be approved or obtained from the Utilities Engineer, City of Grand Junction.

Contractor shall obtain all necessary construction permits prior to commencement of work. All permits obtainable by the contractor shall be obtained by the contractor at no additional expense to the Owner, City of Grand Junction.

Existing utility locations shown on these plans are based on spot locations by the respective utilities, or on old construction drawings and are NOT considered sufficiently accurate for digging purposes. Contractor is responsible for locating all service lines and for any damage done to them. Contractor should call for utility locate prior to construction.

Contractor shall give 48 hour notice to all authorized inspectors, superintendents, or persons in charge of public and private utilities affected by his operations prior to commencement of work.

All facilities must be inspected during construction and approved by the Engineer or the Engineers Representative prior to acceptance by the City of Grand Junction. Contractor is to notify the Engineer or Engineers Representative 48 hours in advance of the need for quality control testing.

All areas behind curbs, gutters, sidewalks or other structures are to be finish graded with material free of debris or cobbles, starting at the finish surface of the work item to a point on existing grade such that surface drainage will not pond.

All excavation, unusable as backfill, including waste materials, vegetation, roots, concrete, pipe, rocks, asphalt pavement, or other debris shall be disposed of by the Contractor off site at an appropriate disposal facility.

All sanitary sewer main lines and service lines are to be PVC Sewer Pipe, ASTM D3034, SDR 35.

For new manhole construction and reconstruction of existing manhole bases, where sewerline grade does not change, sewerline installation is to run through manhole location, base constructed, then sewerline notched.

All sanitary sewer main line and service line construction shall be constructed in accordance with the Standard SS-1, Standard Sanitary Sewer Details, City of Grand Junction. See sheet 14 of 15.

Any conflicts with existing site improvements which are not noted on these plans are to be brought to the immediate attention of the Engineer or the Engineers Representative prior to disturbance.

Private facilities such as driveways, fences, landscaping, etc., damaged during construction are to be restored to as near original condition as possible. No separate pay.

Construction of sidewalks, curb and gutter, driveway entrances shall be constructed in accordance with the Standard ST-1, Standard Pavement Details, City of Grand Junction. See sheet 15 of 15.

Contractor is to protect existing utilities and appurtenances. Manholes, valve boxes, utility lines culverts, etc., damaged, covered, or filled with soil or debris by the Contractor shall be cleaned and repaired at no cost.

Plan and Profile stationing and offsets are from Sanitary Sewer centerline. Profile and elevations are to existing/finish grade at centerline.

Scheduling and Notification of sewer service interruptions to the property owners shall be the responsibility of the Contractor. Contractor will be responsible for all re-routing, pumping and dewatering necessary for the construction of the sanitary sewers.

SITE SPECIFIC CONSTRUCTION NOTES

REPLACEMENT BETWEEN 9TH AND 10TH, COLORADO AND MAIN

All service lines are to be reconstructed to the property lines, if needed, and authorized by the Engineer. Some service lines have been located by remote video. The service locations are not exact. Some service lines, as indicated in the legend as "Location unknown", were not located by the remote video and are shown in an assumed location. Contractor is responsible for the location of all service lines. Exploratory excavations may be required. Exploratory excavation shall be included in Item 619, 4" Dia. PVC Sanitary Sewer Pipe.

Finish grading of aggregate base shall match existing ground grades, see details, Sht. 13 of 15. All existing asphaltic pavement within the alley R.O.W. shall be removed and disposed. Existing concrete incinerators shall be removed, only if owners agree to removal.

REPLACEMENT BETWEEN 9TH AND 10TH, CHIPETA AND OURAY.

All service lines are to be reconstructed to the property lines, if needed, and authorized by the Engineer. Some service lines have been located by remote video. The service locations are not exact. Some service lines, as indicated in the legend as "Location unknown", were not located by the remote video and are shown in an assumed location. Contractor is responsible for the location of all service lines. Exploratory excavations may be required. Exploratory excavation shall be included in Item 619, 4" Dia. PVC Sanitary Sewer Pipe.

Due to conflicts with existing utilities, the existing sewer line replacement alignment has been shifted from the existing alignment. Additional Exploratory excavation to expose service lines will be required.

Finish grading of aggregate base shall match existing ground grades, see details, Sht. 13 of 15. All existing asphaltic pavement within the alley R.O.W. shall be removed and disposed. Existing concrete incinerators shall be removed, only if owners agree to removal.

REPLACEMENT BETWEEN ELM AND ORCHARD, 20TH AND 21ST.

All service lines are to be reconstructed to the property lines, if needed, and authorized by the Engineer. Some service lines have been located by remote video. The service locations are not exact. Some service lines, as indicated in the legend as "Location unknown", were not located by the remote video and are shown in an assumed location. Contractor is responsible for the location of all service lines. Exploratory excavations may be required. Exploratory excavation shall be included in Item 619, 4" Dia. PVC Sanitary Sewer Pipe.

Due to conflicts with existing utilities, the existing sewer line replacement alignment has been shifted from the existing alignment. Additional Exploratory excavation to expose service lines will be required.

Finish grading of aggregate base shall match existing ground grades, see details, Sht. 13 of 15.

REPLACEMENT ON GRAND AVE. BETWEEN 21ST AND 23RD

All service lines, if any, are to be reconstructed to the property lines, if needed. Service lines were not located and none are shown. Contractor is responsible for the location of all service lines.

Finish grade of bituminous pavement shall match existing pavement grades, see details, Sht. 13 of 15. Cut lines in the existing WB lane shall be 4 feet left and right of the sanitary sewer centerline. Contractor shall be responsible for maintaining trench stability so that sloughing does not occur beyond these limits. Traffic control supervisor and flaggers shall be employed at all times while construction is occurring. Nighttime signing and barricades will be required. All signing and barricades shall be in conformance with the current Manual of Uniform Traffic Control Devices.

EXTENSION ON 23 ROAD, NORTH FROM HWY 6&50

All service stub lines are to be installed to 2' beyond the 23 Road edge of pavement. Stubs are to be constructed on the East side of 23 Road ONLY. Contractor shall check with property owners as to where they would like service stubs located.

Cut along existing 23 Road centerline and remove and dispose existing asphaltic pavement of the NB lane. The SB lane shall not be disturbed. New construction of the NB lane shall match existing grades at centerline. See details, sheet 13 of 15. Traffic control supervisor and flaggers shall be employed at all times while construction is occurring.

AS CONSTRUCTED

5-12-95

DRANN BY: BKR	REVIEWED _____ DATE: _____ FOR _____
DESIGNED BY: BKR	REVIEWED _____ DATE: _____ FOR BANNER ASSOCIATES, INC.
CHECKED BY: KJB	



American Consulting
Engineers Council
Member

BANNER

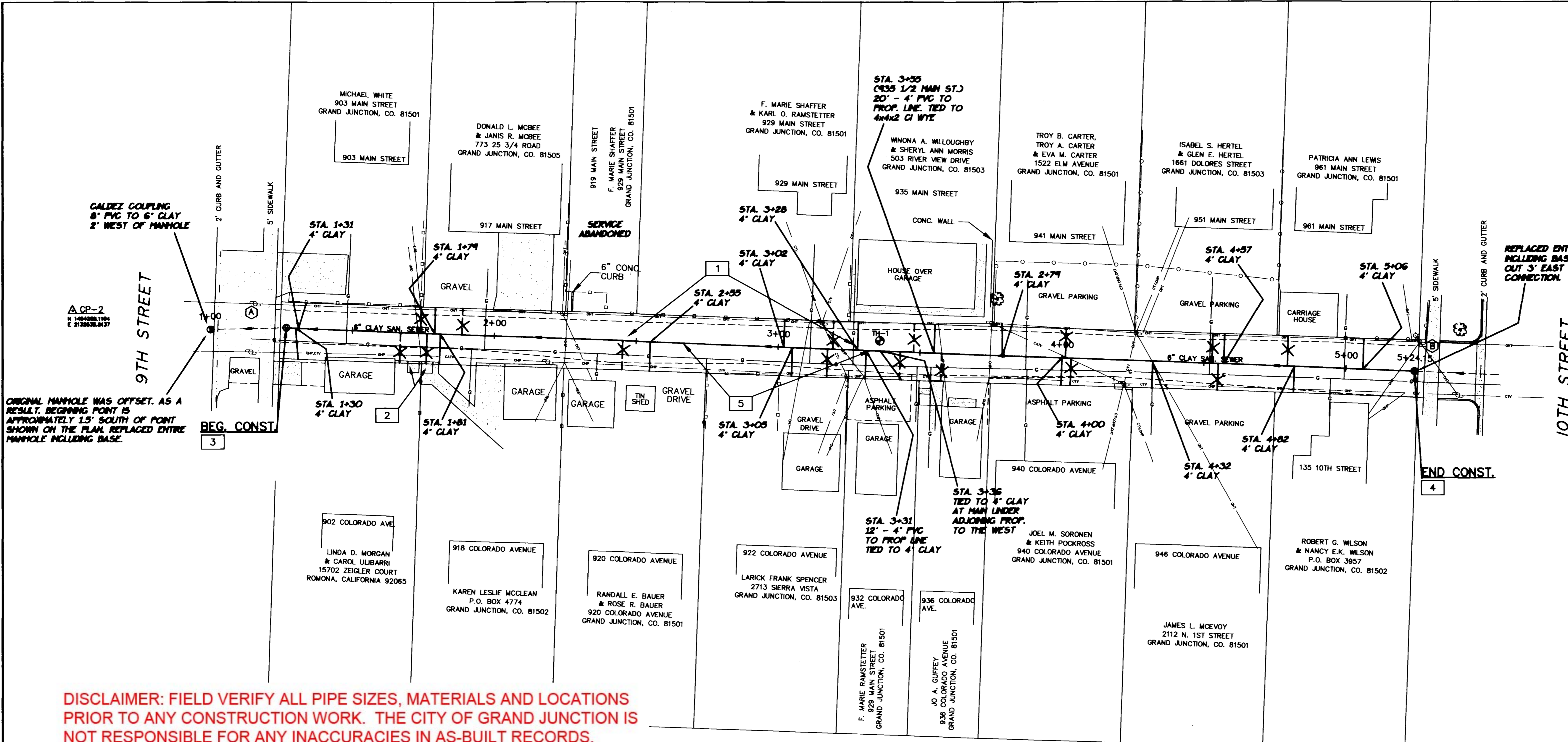
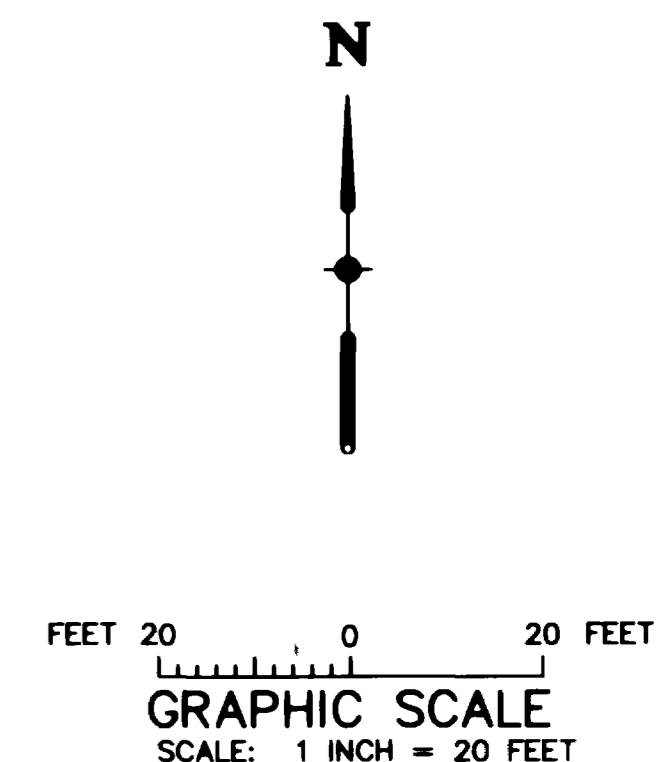
BANNER ASSOCIATES, INC. • CONSULTING ENGINEERS & SURVEYORS
2777 CROSSROADS BOULEVARD • GRAND JUNCTION, CO 81506 • (303) 243-2242
605 E. MAIN • SUITE 6 • ASPEN, CO 81611 • (303) 925-5657

REVISION	DATE	DESCRIPTION	BY	QTY

CITY OF GRAND JUNCTION	GRAND JUNCTION, COLORADO	SCALE: NTS	JOB NO: 8301-01	DATE: 8/4/94
SUMMARY OF APPROXIMATE QUANTITIES		SHEET NO: 2 OF 15		

LEGEND

- EXISTING ASPHALT
- EXISTING CONCRETE
- △ CP-1 CONTROL POINT
- ⊕ BENCHMARK
- EXISTING CHAIN LINK FENCE
- EXISTING WOOD FENCE
- EXISTING WIRE FENCE
- EXISTING GAS LINE
- EXISTING POWER POLE
- ⊙ EXISTING SANITARY SEWER MANHOLE
- EXISTING OVERHEAD UTILITIES
- ⊙ EXISTING LIGHT
- ⊙ EXISTING TREE
- SEWER SERVICE, (LOCATION UNKNOWN)
- SEWER SERVICE, (LOCATION BY VIDEOLOG)

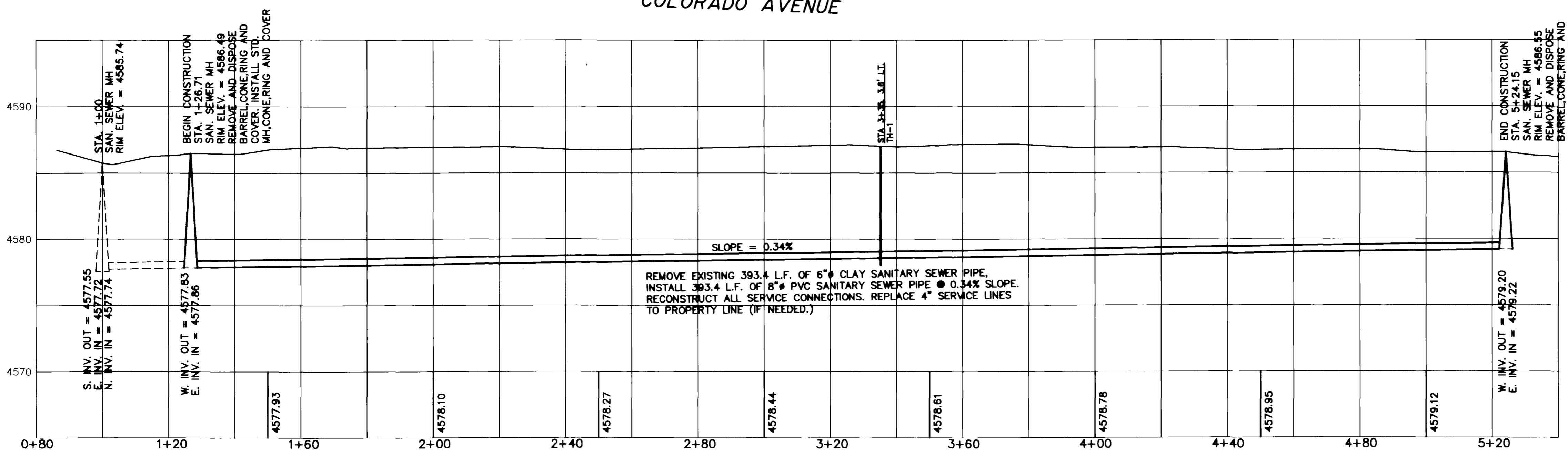


DISCLAIMER: FIELD VERIFY ALL PIPE SIZES, MATERIALS AND LOCATIONS PRIOR TO ANY CONSTRUCTION WORK. THE CITY OF GRAND JUNCTION IS NOT RESPONSIBLE FOR ANY INACCURACIES IN AS-BUILT RECORDS.

CONSTRUCTION NOTES

- 1 STA. 1+22.6 TO STA. 5+27.6
REMOVE EXISTING ASPHALTIC PAVEMENT. CONSTRUCT 6" AGGREGATE BASE, (C.D.O.T. CL-6). SEE DETAIL TYPICAL.
- 2 REMOVE EXISTING CONCRETE INCINERATORS ONLY WITH OWNERS PERMISSION.
- 3 STA. 1+26.71
REMOVE AND DISPOSE MANHOLE BARREL, CONE, RING, **BASE** AND COVER. INSTALL STD. MANHOLE BARREL, CONE, RING, **BASE** AND COVER. RIM ELEV. = 4586.49
- 4 STA. 5+24.15
REMOVE AND DISPOSE MANHOLE BARREL, CONE, RING, **BASE** AND COVER. INSTALL STD. MANHOLE BARREL, CONE, RING, **BASE** AND COVER. RIM ELEV. = 4586.55
- 5 STA. 1+26.71 TO STA. 5+24.15
REMOVE EXISTING 393.4 L.F. OF 6" CLAY SANITARY SEWER PIPE. INSTALL 393.4 L.F. OF 8" PVC SANITARY SEWER PIPE @ 0.34% SLOPE. RECONSTRUCT ALL SERVICE CONNECTIONS. REPLACE 4" SERVICE LINES TO PROPERTY LINE, IF NEEDED.

- NOTES:**
- 1. BASIS OF BEARINGS: THE LINE BETWEEN THE CITY MONUMENT AT 9TH AND COLORADO AND THE CITY MONUMENT AT 10TH AND COLORADO ARE ASSUMED TO HAVE A BEARING OF S 88° 00' 13" E WITH ALL OTHER BEARINGS HEREON RELATIVE THERETO.
 - 2. BASIS OF BENCHMARKS: CITY OF GRAND JUNCTION CITY MONUMENT AT 9TH AND COLORADO, ELEVATION 4584.11 FEET
 - ⊙ SPIKE IN SOUTH SIDE OF TELEPHONE POLE, NORTH SIDE OF ALLEY AND EAST OF 9TH STREET, 2 FEET ABOVE GROUND LEVEL. ELEV. 4588.84 FEET.
 - ⊙ SPIKE IN SOUTH SIDE OF TELEPHONE POLE, NORTH SIDE OF ALLEY AND WEST OF 10TH STREET, 2 FEET ABOVE GROUND LEVEL. ELEV. 4588.83 FEET.



AS CONSTRUCTED
5-12-95 SEGMENT 1

DRAWN BY: F.J.K.	REVIEWED DATE: _____ FOR _____
CHECKED BY: K.J.B.	REVIEWED DATE: _____ FOR BANNER ASSOCIATES, INC.



BANNER ASSOCIATES, INC. • CONSULTING ENGINEERS & SURVEYORS
2777 CROSSROADS BOULEVARD • GRAND JUNCTION, CO 81506 • [303] 243-2242
605 E. MAIN • SUITE 6 • ASPEN, CO 81611 • [303] 925-5857

REVISION	DATE	DESCRIPTION	BY	CHKD

CITY OF GRAND JUNCTION
GRAND JUNCTION, COLORADO
**SANITARY SEWER LINE REPLACEMENT AND EXTENSION
BETWEEN COLORADO AVENUE AND MAIN STREET
FROM 9TH STREET AND 10TH STREET**

SCALE: HORIZ: 1" = 20' VERT: 1" = 5'	Project No: 8301-01
DATE: 6-10-94	SHEET NO.: 3 of 15

NOTE:
NEW SEWER LINE CONSTRUCTED FOLLOWING OLD
SEWER ALIGNMENT. NO OFFSET AS SHOWN

TIMOTHY ERIC PALMQUIST
907 CHIPETA AVENUE
GRAND JUNCTION, CO 81501

MELBA JUANITA YOUKER
1637 N. 16TH STREET
GRAND JUNCTION, CO 81501

JULIA V. AMOS
919 CHIPETA AVENUE
GRAND JUNCTION, CO 81501

AMANDA W. MCSADDEN
& BEVERLY J. GROSSMAN
927 CHIPETA AVENUE
GRAND JUNCTION, CO 81501

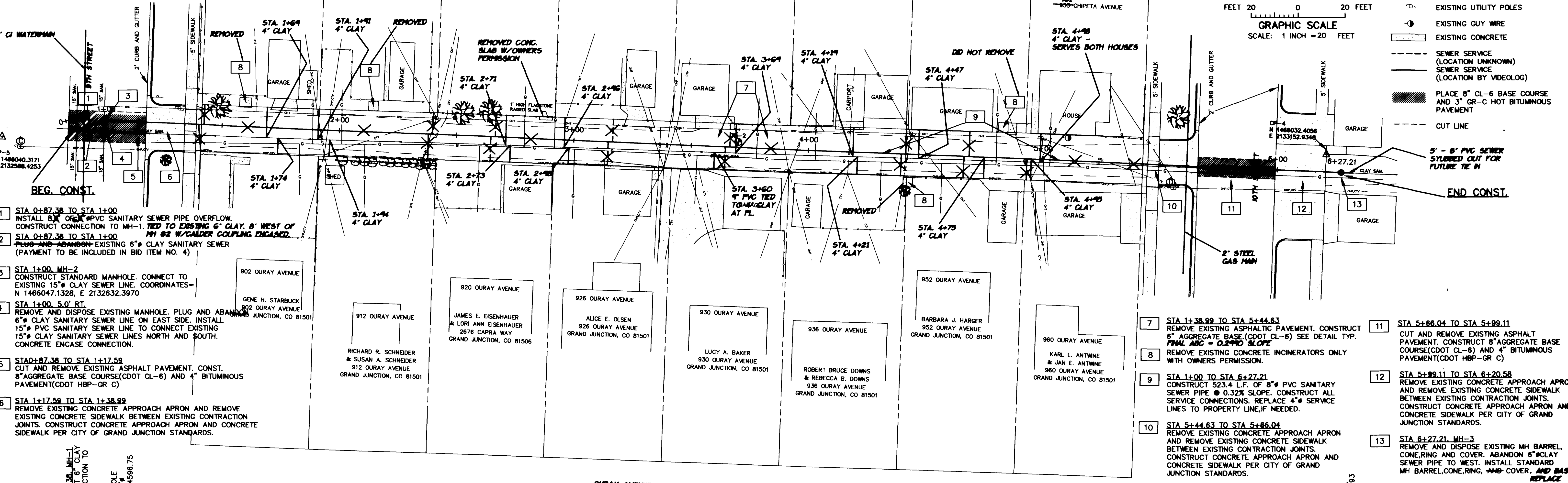
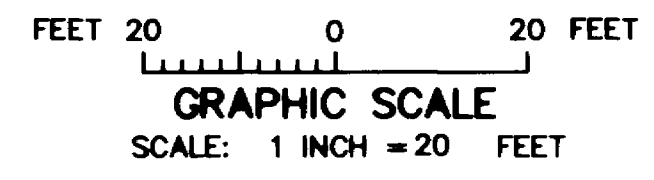
MARVIN R. WALWORTH SR.
& ELEANORE E. WALWORTH
518 N. 23RD STREET
GRAND JUNCTION, CO 81501

ELIZABETH T. PECK
& RITA C. WEINGART
P.O. BOX 2903
GRAND JUNCTION, CO 81502

THELMA RING
953 CHIPETA AVENUE
GRAND JUNCTION, CO 81501

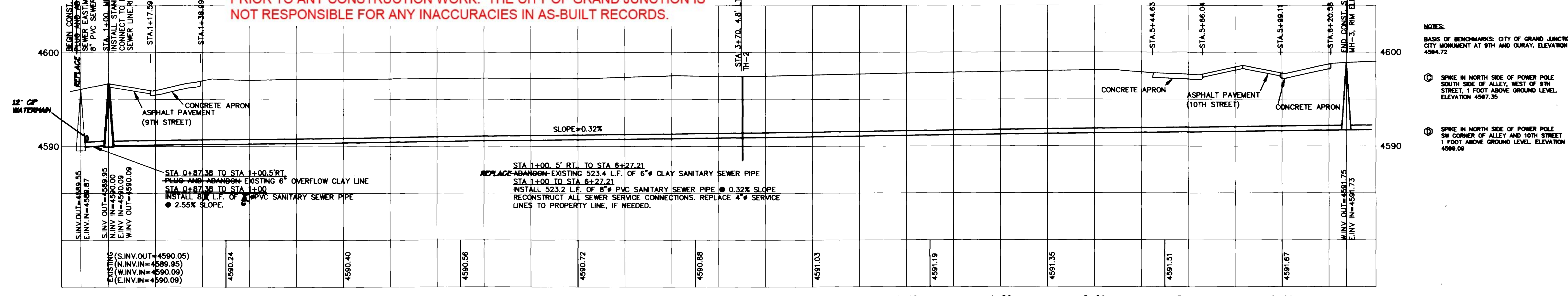
THELMA RING
953 CHIPETA AVENUE
GRAND JUNCTION, CO 81501

- LEGEND**
- △ CONTROL POINT
 - BENCHMARK
 - EXISTING EDGE OF PAVEMENT
 - EXISTING CHAIN LINK FENCE
 - EXISTING WOOD FENCE
 - EXISTING GAS LINE
 - EXISTING OVERHEAD UTILITIES
 - EXISTING TREES
 - ⊙ EXISTING SANITARY SEWER MANHOLES
 - ⊙ EXISTING UTILITY POLES
 - ⊙ EXISTING GUY WIRE
 - EXISTING CONCRETE
 - - - SEWER SERVICE (LOCATION UNKNOWN)
 - - - SEWER SERVICE (LOCATION BY VIDEOLOG)
 - ▨ PLACE 8" CL-6 BASE COURSE AND 3" GR-C HOT BITUMINOUS PAVEMENT
 - - - CUT LINE



- 1 STA 0+87.38 TO STA 1+00.00
INSTALL 8" PVC SANITARY SEWER PIPE OVERFLOW. CONSTRUCT CONNECTION TO MH-1. TIED TO EXISTING 6" CLAY. 5' WEST OF MH #2 W/ GALDER COUPLING ENGAGED.
- 2 STA 0+87.38 TO STA 1+00.00
PLUG AND ABANDON EXISTING 6" CLAY SANITARY SEWER (PAYMENT TO BE INCLUDED IN BID ITEM NO. 4)
- 3 STA 1+00.00, MH-2
CONSTRUCT STANDARD MANHOLE. CONNECT TO EXISTING 15" CLAY SEWER LINE. COORDINATES= N 1466047.1328, E 2132632.3970
- 4 STA 1+00.00, 5.0' RT.
REMOVE AND DISPOSE EXISTING MANHOLE. PLUG AND ABANDON 6" CLAY SANITARY SEWER LINE ON EAST SIDE. INSTALL 15" PVC SANITARY SEWER LINE TO CONNECT EXISTING 15" CLAY SANITARY SEWER LINES NORTH AND SOUTH. CONCRETE ENCASE CONNECTION.
- 5 STA 0+87.38 TO STA 1+17.58
CUT AND REMOVE EXISTING ASPHALT PAVEMENT. CONST. 8" AGGREGATE BASE COURSE (CDOT CL-6) AND 4" BITUMINOUS PAVEMENT (CDOT HBP-GR C)
- 6 STA 1+17.58 TO STA 1+38.99
REMOVE EXISTING CONCRETE APPROACH APRON AND REMOVE EXISTING CONCRETE SIDEWALK BETWEEN EXISTING CONTRACTION JOINTS. CONSTRUCT CONCRETE APPROACH APRON AND CONCRETE SIDEWALK PER CITY OF GRAND JUNCTION STANDARDS.
- 7 STA 1+38.99 TO STA 5+44.63
REMOVE EXISTING ASPHALT PAVEMENT. CONSTRUCT 6" AGGREGATE BASE (CDOT CL-6) SEE DETAIL TYP. FINAL ABC = 0.2% SLOPE
- 8 REMOVE EXISTING CONCRETE INCINERATORS ONLY WITH OWNERS PERMISSION.
- 9 STA 1+00 TO STA 6+27.21
CONSTRUCT 523.4 L.F. OF 8" PVC SANITARY SEWER PIPE @ 0.32% SLOPE. CONSTRUCT ALL SERVICE CONNECTIONS. REPLACE 4" SERVICE LINES TO PROPERTY LINE, IF NEEDED.
- 10 STA 5+44.63 TO STA 5+66.04
REMOVE EXISTING CONCRETE APPROACH APRON AND REMOVE EXISTING CONCRETE SIDEWALK BETWEEN EXISTING CONTRACTION JOINTS. CONSTRUCT CONCRETE APPROACH APRON AND CONCRETE SIDEWALK PER CITY OF GRAND JUNCTION STANDARDS.
- 11 STA 5+66.04 TO STA 5+99.11
CUT AND REMOVE EXISTING ASPHALT PAVEMENT. CONSTRUCT 8" AGGREGATE BASE COURSE (CDOT CL-6) AND 4" BITUMINOUS PAVEMENT (CDOT HBP-GR C)
- 12 STA 5+99.11 TO STA 6+20.58
REMOVE EXISTING CONCRETE APPROACH APRON AND REMOVE EXISTING CONCRETE SIDEWALK BETWEEN EXISTING CONTRACTION JOINTS. CONSTRUCT CONCRETE APPROACH APRON AND CONCRETE SIDEWALK PER CITY OF GRAND JUNCTION STANDARDS.
- 13 STA 6+27.21, MH-3
REMOVE AND DISPOSE EXISTING MH BARREL, CONE, RING, AND COVER. ABANDON 6" CLAY SEWER PIPE TO WEST. INSTALL STANDARD MH BARREL, CONE, RING, AND COVER. AND BASE REPLACE

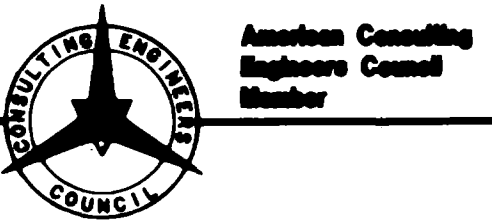
DISCLAIMER: FIELD VERIFY ALL PIPE SIZES, MATERIALS AND LOCATIONS PRIOR TO ANY CONSTRUCTION WORK. THE CITY OF GRAND JUNCTION IS NOT RESPONSIBLE FOR ANY INACCURACIES IN AS-BUILT RECORDS.



- NOTES:**
- ⊙ BASIS OF BENCHMARKS: CITY OF GRAND JUNCTION CITY MONUMENT AT 9TH AND OURAY, ELEVATION 4584.72
 - ⊙ SPIKE IN NORTH SIDE OF POWER POLE SOUTH SIDE OF ALLEY, WEST OF 9TH STREET, 1 FOOT ABOVE GROUND LEVEL. ELEVATION 4587.35
 - ⊙ SPIKE IN NORTH SIDE OF POWER POLE SW CORNER OF ALLEY AND 10TH STREET, 1 FOOT ABOVE GROUND LEVEL. ELEVATION 4586.06

SEGMENT 2 **AS CONSTRUCTED**
5-12-95

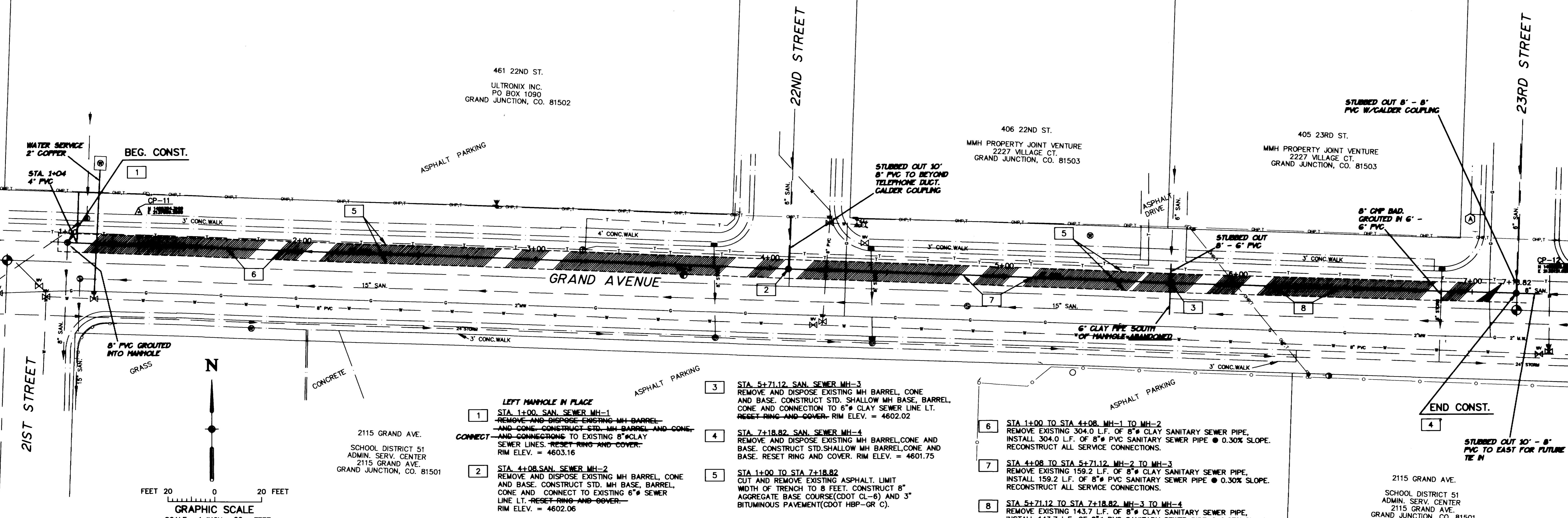
DRAWN BY: FJK CHECKED BY: KJB	REVIEWED _____ DATE: _____ FOR _____ REVIEWED _____ DATE: _____ FOR BANNER ASSOCIATES, INC.
--	--



BANNER ASSOCIATES, INC.
CONSULTING ENGINEERS & SURVEYORS
2777 CROSSROADS BOULEVARD • GRAND JUNCTION, CO 81506 • (303) 243-2242
605 E. MAIN • SUITE 6 • ASPEN, CO 81611 • (303) 925-5657

REVISION	DATE	DESCRIPTION	BY	QTY

CITY OF GRAND JUNCTION	GRAND JUNCTION, COLORADO	Project No: 8301-01
SANITARY SEWER LINE REPLACEMENT AND EXTENSION BETWEEN CHIPETA AVENUE AND OURAY AVENUE FROM 9TH STREET TO 10TH STREET		SHEET NO: 4 OF 15
SCALE: Horiz: 1"=20' Vert: 1"=5'	DATE: 5/31/94	



LEFT MANHOLE IN PLACE
STA. 1+00. SAN. SEWER MH-1
 REMOVE AND DISPOSE EXISTING MH BARREL, CONE AND CONE. CONSTRUCT STD. MH BARREL AND CONE. AND CONNECTIONS TO EXISTING 8" CLAY SEWER LINES. RESET RING AND COVER. RIM ELEV. = 4603.16

STA. 4+08. SAN. SEWER MH-2
 REMOVE AND DISPOSE EXISTING MH BARREL, CONE AND BASE. CONSTRUCT STD. MH BARREL, CONE AND CONE. CONNECT TO EXISTING 6" SEWER LINE LT. RESET RING AND COVER. RIM ELEV. = 4602.06

STA. 5+71.12. SAN. SEWER MH-3
 REMOVE AND DISPOSE EXISTING MH BARREL, CONE AND BASE. CONSTRUCT STD. SHALLOW MH BASE, BARREL, CONE AND CONNECTION TO 6" CLAY SEWER LINE LT. RESET RING AND COVER. RIM ELEV. = 4602.02

STA. 7+18.82. SAN. SEWER MH-4
 REMOVE AND DISPOSE EXISTING MH BARREL, CONE AND BASE. CONSTRUCT STD. SHALLOW MH BARREL, CONE AND BASE. RESET RING AND COVER. RIM ELEV. = 4601.75

STA. 1+00 TO STA. 7+18.82
 CUT AND REMOVE EXISTING ASPHALT. LIMIT WIDTH OF TRENCH TO 8 FEET. CONSTRUCT 8" AGGREGATE BASE COURSE (DOT CL-6) AND 3" BITUMINOUS PAVEMENT (DOT HBP-GR C).

STA. 1+00 TO STA. 4+08. MH-1 TO MH-2
 REMOVE EXISTING 304.0 L.F. OF 8" CLAY SANITARY SEWER PIPE. INSTALL 304.0 L.F. OF 8" PVC SANITARY SEWER PIPE @ 0.30% SLOPE. RECONSTRUCT ALL SERVICE CONNECTIONS.

STA. 4+08 TO STA. 5+71.12. MH-2 TO MH-3
 REMOVE EXISTING 159.2 L.F. OF 8" CLAY SANITARY SEWER PIPE. INSTALL 159.2 L.F. OF 8" PVC SANITARY SEWER PIPE @ 0.30% SLOPE. RECONSTRUCT ALL SERVICE CONNECTIONS.

STA. 5+71.12 TO STA. 7+18.82. MH-3 TO MH-4
 REMOVE EXISTING 143.7 L.F. OF 8" CLAY SANITARY SEWER PIPE. INSTALL 143.7 L.F. OF 8" PVC SANITARY SEWER PIPE @ 0.27% SLOPE. RECONSTRUCT ALL SERVICE CONNECTIONS.

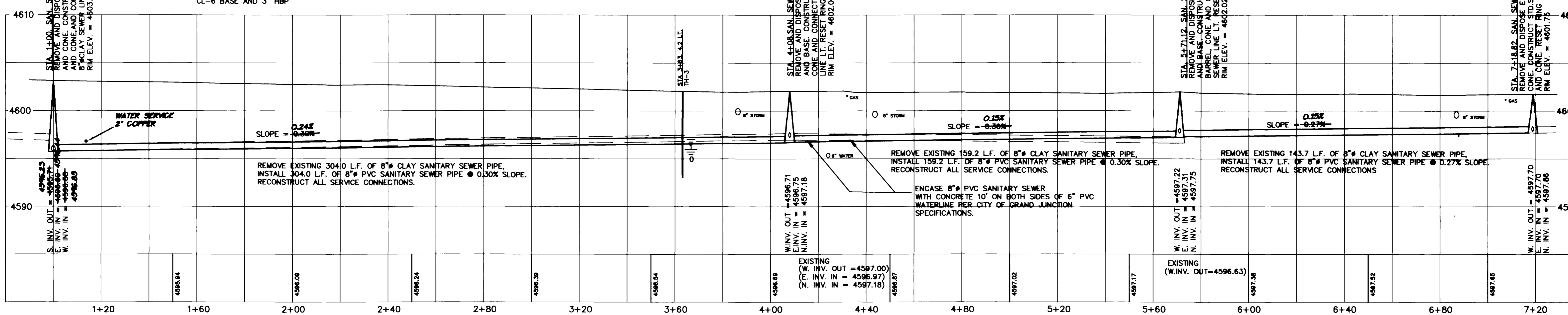
NOTES:

- BASIS OF BEARINGS: THE LINE BETWEEN THE CITY MONUMENT AT 21ST AND GRAND AVE. AND THE CITY MONUMENT AT 23RD AND GRAND AVE. ARE ASSUMED TO HAVE A BEARING OF S 89° 07' 58" E WITH ALL OTHER BEARINGS HEREON RELATIVE THERETO.
- BASIS OF BENCHMARKS: CITY OF GRAND JUNCTION CITY MONUMENT AT 23RD AND GRAND AVE. ELEVATION 4601.55 FEET

□ ON THE SOUTHWEST CORNER OF THE END OF WALK, LOCATED AT THE NORTHWEST CORNER OF 23RD AND GRAND AVE. ELEVATION 4602.03

LEGEND

- EXISTING ASPHALT
- EXISTING FENCE
- EXISTING BURIED TELEPHONE
- EXISTING SANITARY SEWER
- EXISTING WATERLINE
- EXISTING GASLINE
- EXISTING CONTROL POINT
- BENCHMARK
- CITY MONUMENT
- CUT ASPHALT, PLACE 8" CL-6 BASE AND 3" HBP



SEGMENT 3 **AS CONSTRUCTED**
 5-12-95

DRAWN BY: F.J.K.
REVIEWED: _____
DATE: _____ FOR _____

CHECKED BY: K.J.B.
REVIEWED: _____
DATE: _____ FOR BANNER ASSOCIATES, INC.

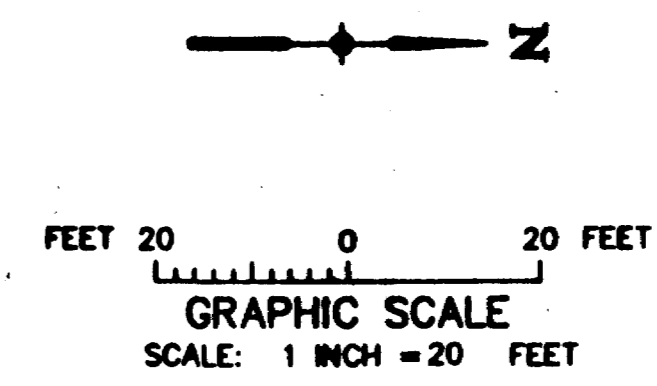
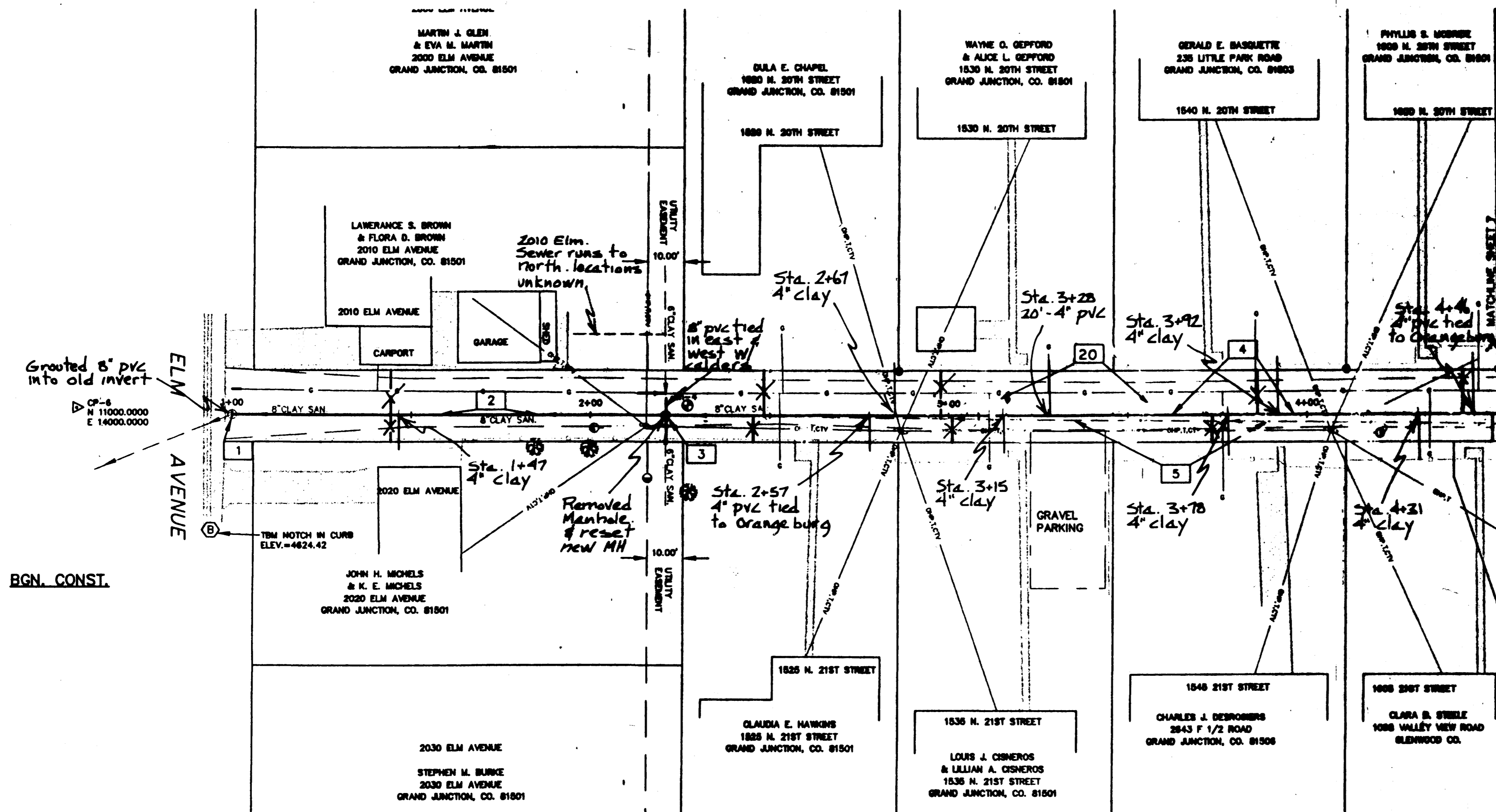


BANNER ASSOCIATES, INC.
 CONSULTING ENGINEERS & SURVEYORS
 2777 CROSSROADS BOULEVARD • GRAND JUNCTION, CO 81506 • (303) 243-2242
 605 E. MAIN • SUITE 6 • ASPEN, CO 81611 • (303) 925-5857

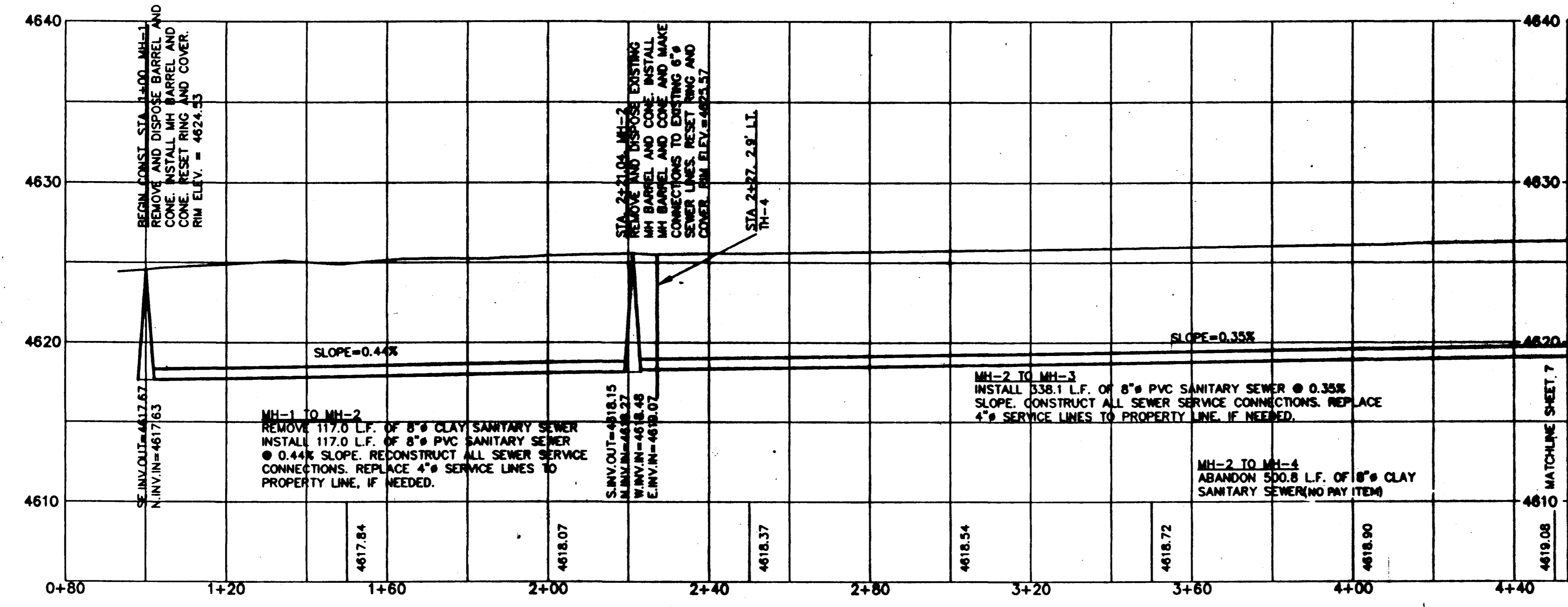
REVISION	DATE	DESCRIPTION	BY	QTY

CITY OF GRAND JUNCTION
 GRAND JUNCTION, COLORADO
SANITARY SEWER LINE REPLACEMENT AND EXTENSION
 GRAND AVENUE FROM 21ST ST. TO 23RD ST.
 SCALE: Horiz: 1" = 20'
 Vert: 1" = 5'
 DATE: 6-10-94
 Project No: 8301-01
 SHEET NO: 5 of 15

DISCLAIMER: FIELD VERIFY ALL PIPE SIZES, MATERIALS AND LOCATIONS PRIOR TO ANY CONSTRUCTION WORK. THE CITY OF GRAND JUNCTION IS NOT RESPONSIBLE FOR ANY INACCURACIES IN AS-BUILT RECORDS.

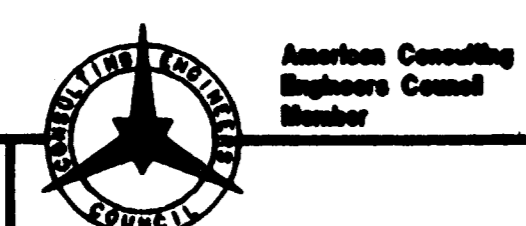


- LEGEND**
- ⊕ CITY MONUMENT
 - ⊙ CONTROL POINT
 - ⊕ BENCHMARK
 - EXISTING EDGE OF GRAVEL
 - EXISTING CHAINLINK FENCE
 - EXISTING WOOD FENCE
 - EXISTING WIRE FENCE
 - EXISTING OVERHEAD UTILITY LINES
 - EXISTING CONCRETE
 - EXISTING GAS LINE
 - EXISTING WATER LINE
 - EXISTING PROPERTY PINS
 - EXISTING UTILITY POLES
 - EXISTING GUY WIRE
 - EXISTING SANITARY SEWER MANHOLE
 - EXISTING SPRINKLER HEADS
 - REPLACE SEWER SERVICE (LOCATION UNKNOWN)
 - REPLACE SEWER SERVICE (LOCATION BY WOLODOG)
 - CONSTRUCT SANITARY SEWER MH



CONSTRUCTION NOTES

- 1 BEGIN CONST. STA. 1+00. MH-1 REMOVE AND DISPOSE BARREL AND CONE. INSTALL MH BARREL AND CONE. RESET RING AND COVER. RIM ELEV. = 4624.53
- 2 MH-1 TO MH-2 REMOVE 117.0 L.F. OF 8" CLAY SANITARY SEWER. INSTALL 117.0 L.F. OF 8" PVC SANITARY SEWER @ 0.44% SLOPE. RECONSTRUCT ALL SEWER SERVICE CONNECTIONS. REPLACE 4" SERVICE LINES TO PROPERTY LINE, IF NEEDED.
- 3 STA. 2+21.04. MH-2 REMOVE AND DISPOSE EXISTING MH BARREL AND CONE. INSTALL base MH BARREL AND CONE AND MAKE CONNECTIONS TO EXISTING 8" SEWER LINES. RESET RING AND COVER. RIM ELEV. = 4625.57
- 4 MH-2 TO MH-3 INSTALL 338.1 L.F. OF 8" PVC SANITARY SEWER @ 0.35% SLOPE. CONSTRUCT ALL SEWER SERVICE CONNECTIONS. REPLACE 4" SERVICE LINES TO PROPERTY LINE, IF NEEDED.
- 5 MH-2 TO MH-4 ABANDON 500.8 L.F. OF 8" CLAY SANITARY SEWER. *New line follows old sewer alignment to MH #4. Manhole #3 was eliminated.*
- 20 STA. 0+98 TO STA. 5+68 CONSTRUCT 6" AGGREGATE BASE. SEE DETAIL SHEET.



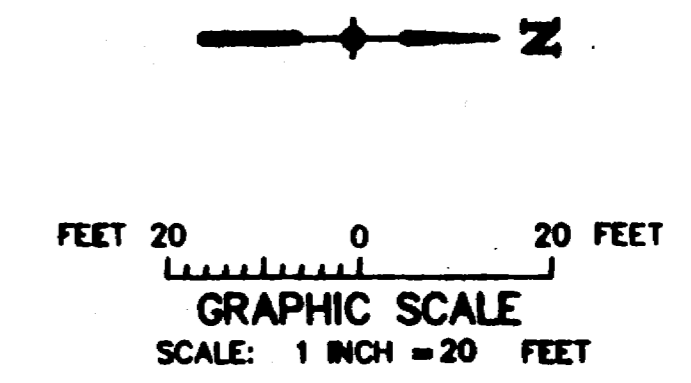
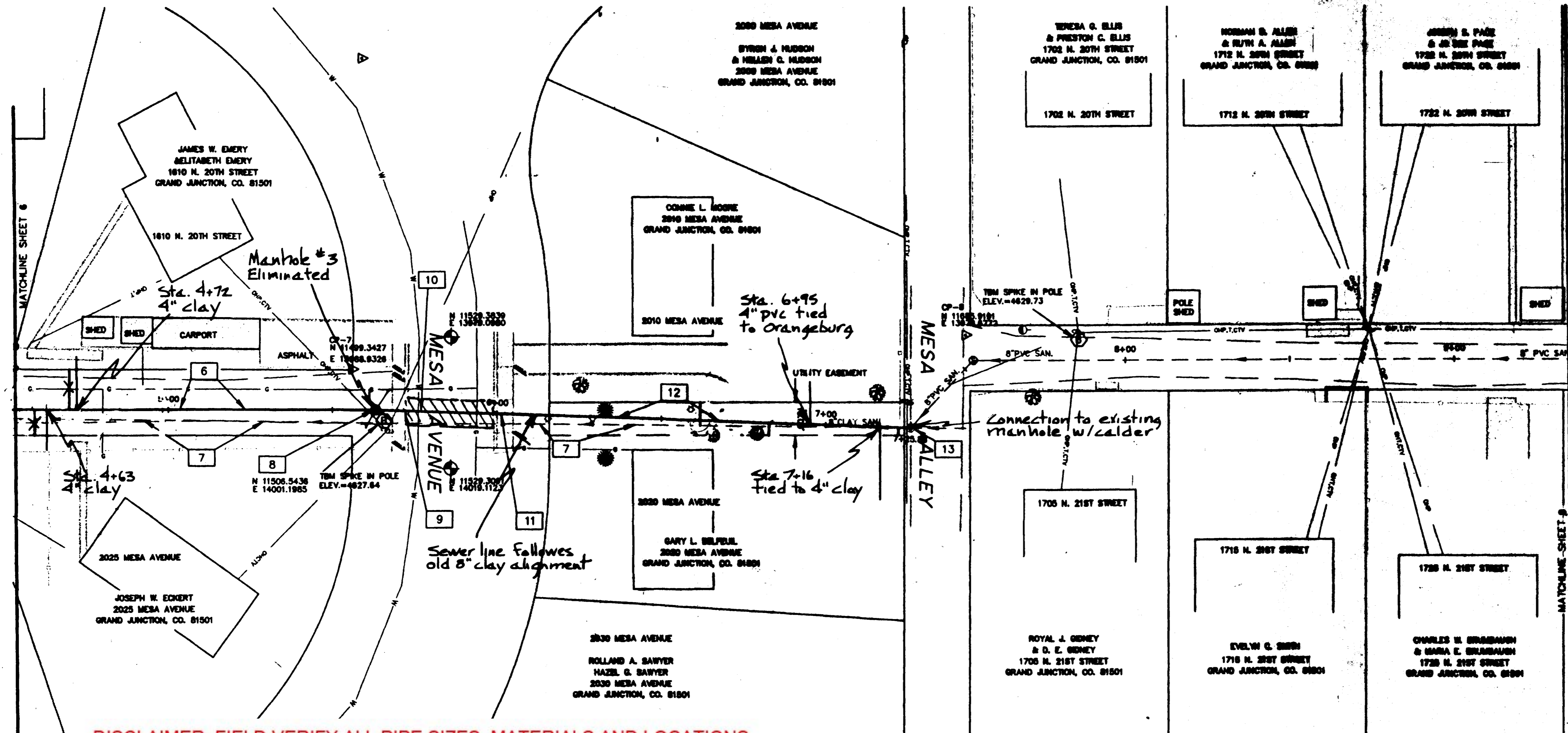
BANNER
 BANNER ASSOCIATES, INC. • CONSULTING ENGINEERS & SURVEYORS
 2777 CROSSROADS BOULEVARD • GRAND JUNCTION, CO 81506 • (303) 243-2842
 605 E. MAIN • SUITE 6 • ASPEN, CO 81611 • (303) 925-8867

REVISION	DATE	DESCRIPTION	BY	CHKD

SEGMENT 4
 CITY OF GRAND JUNCTION
 GRAND JUNCTION, COLORADO
SANITARY SEWER LINE REPLACEMENT AND EXTENSION
 BETWEEN 20TH ST. AND 21ST ST.
 FROM ELM AVE. TO ORCHARD AVE.

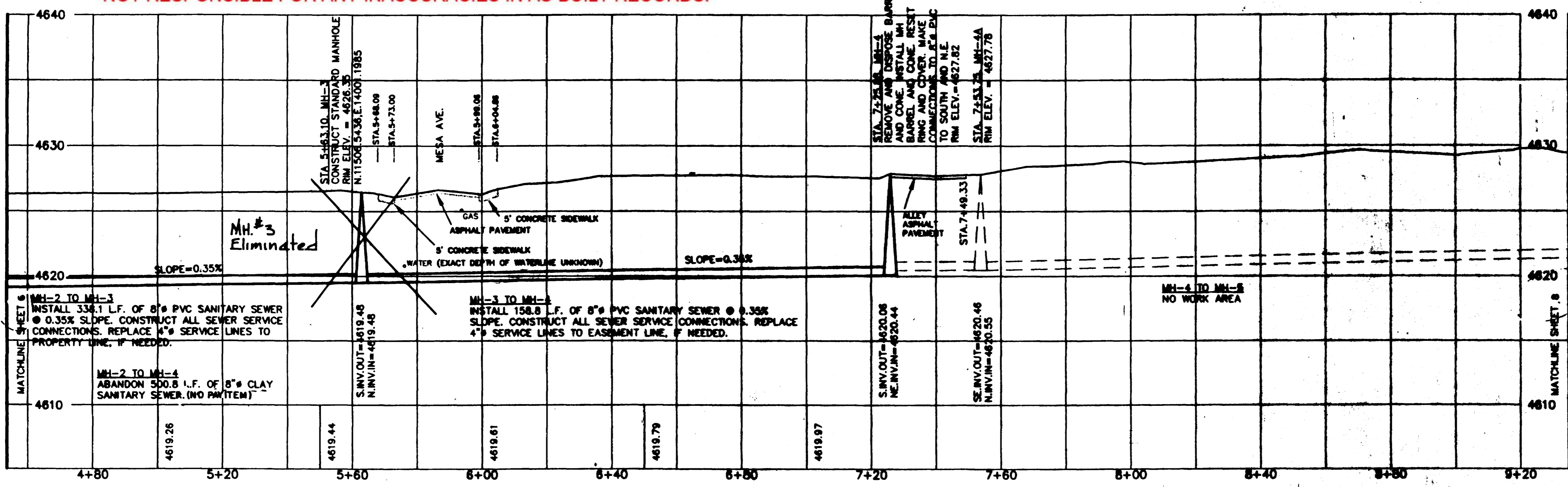
Record drawings
 5-12-75

SCALE: Horiz. 1"=20'	VERT. 1"=4'	DATE: 6/28/94	PROJECT NO: 8308	SHEET NO: 6 OF 6
----------------------	-------------	---------------	------------------	------------------

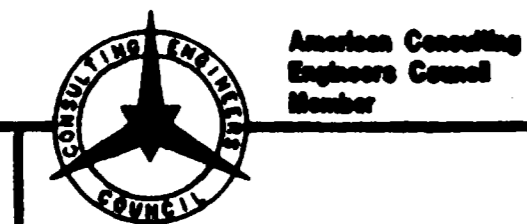


- LEGEND**
- CITY MONUMENT
 - CONTROL POINT
 - BENCHMARK
 - EXISTING EDGE OF GRAVEL
 - EXISTING CHAINLINK FENCE
 - EXISTING WOOD FENCE
 - EXISTING WIRE FENCE
 - EXISTING OVERHEAD UTILITY LINES
 - EXISTING CONCRETE
 - EXISTING GAS LINE
 - EXISTING WATER LINE
 - EXISTING PROPERTY PINS
 - EXISTING UTILITY POLES
 - EXISTING GUY WIRE
 - EXISTING SANITARY SEWER MANHOLE
 - EXISTING SPRINKLER HEADS
 - REPLACE SEWER SERVICE (LOCATION UNKNOWN)
 - REPLACE SEWER SERVICE (LOCATION BY VIDEO)
 - CONSTRUCT SANITARY SEWER MH
 -

DISCLAIMER: FIELD VERIFY ALL PIPE SIZES, MATERIALS AND LOCATIONS PRIOR TO ANY CONSTRUCTION WORK. THE CITY OF GRAND JUNCTION IS NOT RESPONSIBLE FOR ANY INACCURACIES IN AS-BUILT RECORDS.



- CONSTRUCTION NOTES**
- 6 MH-2 TO MH-3
INSTALL 338.1 L.F. OF 8" PVC SANITARY SEWER @ 0.35% SLOPE. CONSTRUCT ALL SEWER SERVICE CONNECTIONS. REPLACE 4" SERVICE LINES TO PROPERTY LINE, IF NEEDED.
 - 7 MH-2 TO MH-4
ABANDON 500.8 L.F. OF 8" CLAY SANITARY SEWER.
 - 8 STA 5+63.10, MH-3
CONSTRUCT STANDARD MANHOLE. RIM ELEV. = 4626.35
 - 9 STA 5+68.09 TO STA 5+73.01
REMOVE EXISTING CONCRETE APPROACH AND SIDEWALK BETWEEN EXISTING CONSTRUCTION JOINTS. CONSTRUCT APPROACH AND SIDEWALK PER CITY OF GRAND JUNCTION STANDARDS.
 - 10 STA 5+73.01 TO STA 5+80.05
SAW CUT AND REMOVE EXISTING ASPHALT PAVEMENT. CONSTRUCT 8" AGGREGATE BASE COURSE (DOT CL-8) AND 3" BITUMINOUS PAVEMENT (DOT HBP GR-C)
 - 11 STA 5+89.05 TO STA 6+04.88
REMOVE EXISTING CONCRETE APPROACH AND SIDEWALK BETWEEN EXISTING CONSTRUCTION JOINTS. CONSTRUCT APPROACH AND SIDEWALK PER CITY OF GRAND JUNCTION STANDARDS.
 - 12 MH-3 TO MH-4
INSTALL 158.8 L.F. OF 8" PVC SANITARY SEWER @ 0.35% SLOPE. CONSTRUCT ALL SEWER SERVICE CONNECTIONS. REPLACE 4" SERVICE LINES TO EASEMENT LINE, IF NEEDED.
 - 13 STA 7+20.88, MH-4
REMOVE AND DISPOSE BARREL AND CONE. INSTALL MH BARREL AND CONE. RESET RING AND COVER. MAKE CONNECTIONS TO 8" PVC TO SOUTH AND N.E. RIM ELEV. = 4627.78

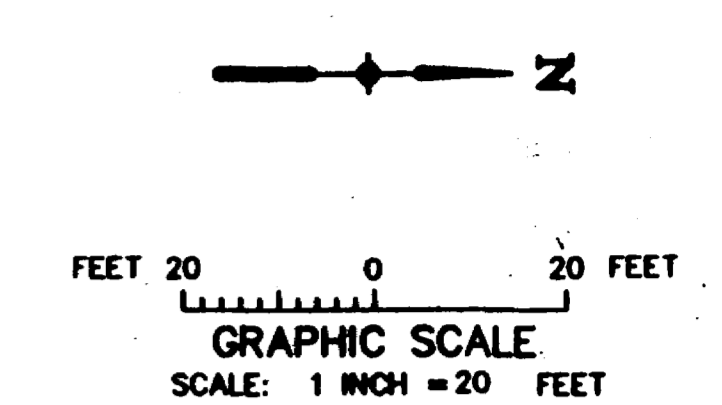
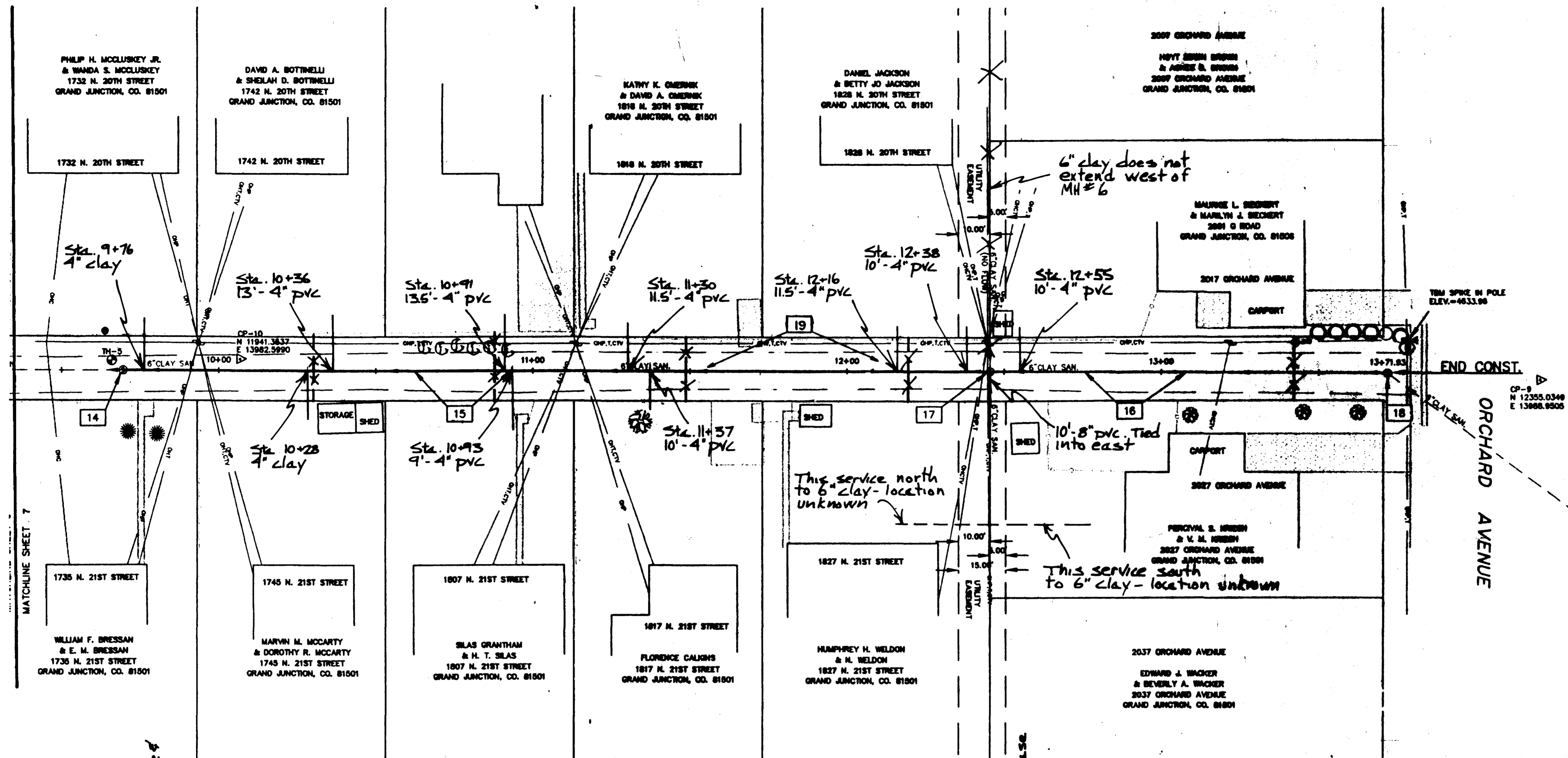


BANNER
BANNER ASSOCIATES, INC. • CONSULTING ENGINEERS & SURVEYORS
2777 CROSSROADS BOULEVARD • GRAND JUNCTION, CO 81506 • (303) 243-8842
605 E. MAIN • SUITE 6 • ASPEN, CO 81611 • (303) 925-8887

REVISION	DATE	DESCRIPTION	BY

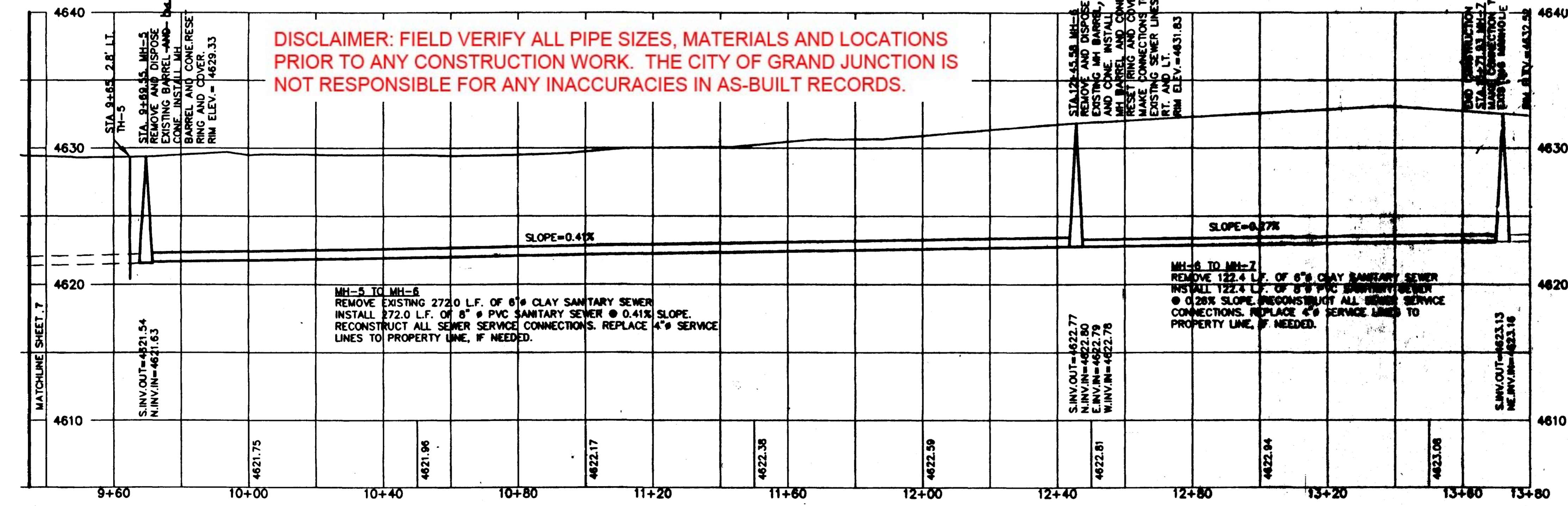
SEGMENT 4
Record drawings
5-12-95
CITY OF GRAND JUNCTION
GRAND JUNCTION, COLORADO
SANTARY SEWER LINE REPLACEMENT AND EXTENSION
BETWEEN 20TH ST. AND 21ST ST.
FROM ELM AVE. TO ORCHARD AVE.

SCALE: HORIZ. 1"=40' VERT. 1"=8'	DATE: 6/28/94	SHEET NO: 7 OF 7
--	------------------	---------------------



- LEGEND**
- CITY MONUMENT
 - CONTROL POINT
 - BENCHMARK
 - EXISTING EDGE OF GRAVEL
 - EXISTING CHAINLINK FENCE
 - EXISTING WOOD FENCE
 - EXISTING WIRE FENCE
 - EXISTING OVERHEAD UTILITY LINES
 - EXISTING CONCRETE
 - EXISTING GAS LINE
 - EXISTING WATER LINE
 - EXISTING PROPERTY PINS
 - EXISTING UTILITY POLES
 - EXISTING GUY WIRE
 - EXISTING SANITARY SEWER MANHOLE
 - EXISTING SPRINKLER HEADS
 - REPLACE SEWER SERVICE (LOCATION UNKNOWN)
 - REPLACE SEWER SERVICE (LOCATION BY HICELOC)
 - CONSTRUCT SANITARY SEWER MH

DISCLAIMER: FIELD VERIFY ALL PIPE SIZES, MATERIALS AND LOCATIONS PRIOR TO ANY CONSTRUCTION WORK. THE CITY OF GRAND JUNCTION IS NOT RESPONSIBLE FOR ANY INACCURACIES IN AS-BUILT RECORDS.



- CONSTRUCTION NOTES**
- 14 STA. 9+69.55 MH-5
REMOVE AND DISPOSE EXISTING BARREL AND CONE. INSTALL MH BARREL AND CONE. RESET RING AND COVER. MAKE CONNECTION TO EXISTING 8" PVC SEWER LINE TO SOUTHWEST. RIM ELEV. = 4629.33
 - 15 MH-5 TO MH-6
REMOVE EXISTING 272.0 L.F. OF 6" CLAY SANITARY SEWER. INSTALL 272.0 L.F. OF 8" PVC SANITARY SEWER @ 0.41% SLOPE. RECONSTRUCT ALL SEWER SERVICE CONNECTIONS. REPLACE 4" SERVICE LINES TO PROPERTY LINE, IF NEEDED.
 - 16 MH-6 TO MH-7
REMOVE 122.4 L.F. OF 6" CLAY SANITARY SEWER. INSTALL 122.4 L.F. OF 8" PVC SANITARY SEWER @ 0.26% SLOPE. RECONSTRUCT ALL SEWER SERVICE CONNECTIONS. REPLACE 4" SERVICE LINES TO PROPERTY LINE, IF NEEDED.
 - 17 STA. 12+45.58 MH-6
REMOVE AND DISPOSE EXISTING MH BARREL AND CONE. INSTALL MH BARREL AND CONE. RESET RING AND COVER. MAKE CONNECTIONS TO EXISTING SEWER LINES RT. AND LT. RIM ELEV. = 4631.83
 - 18 STA. 13+71.93 MH-7
MAKE CONNECTION TO EXISTING MANHOLE. RIM ELEV. = 4632.52
Construct into invert.
STA. 9+64 TO STA. 13+79
 - 19
CONSTRUCT 6" AGGREGATE BASE. SEE DETAIL SHEET.

SEGMENT 4

Record drawings
5-12-75

DRAWN BY: BKR CHECKED BY: KJB	REVIEWED _____ FOR _____ DATE: _____
--	---



BANNER ASSOCIATES, INC.
 CONSULTING ENGINEERS & SURVEYORS
 2777 CROSSROADS BOULEVARD • GRAND JUNCTION, CO 81506 • (303) 843-2242
 605 E. MAIN • SUITE 6 • ASPEN, CO 81611 • (303) 828-8887

REVISION	DATE	DESCRIPTION	BY	CHKD

CITY OF GRAND JUNCTION
 GRAND JUNCTION, COLORADO
SANITARY SEWER LINE REPLACEMENT AND EXTENSION
 BETWEEN 20TH ST. AND 21ST ST.
 FROM ELM AVE. TO ORCHARD AVE.

SCALE: Horiz. 1"=30' Vert. 1"=8' DATE: 6/28/94	Project No: 8301-01 SHEET NO: 8 OF
--	---

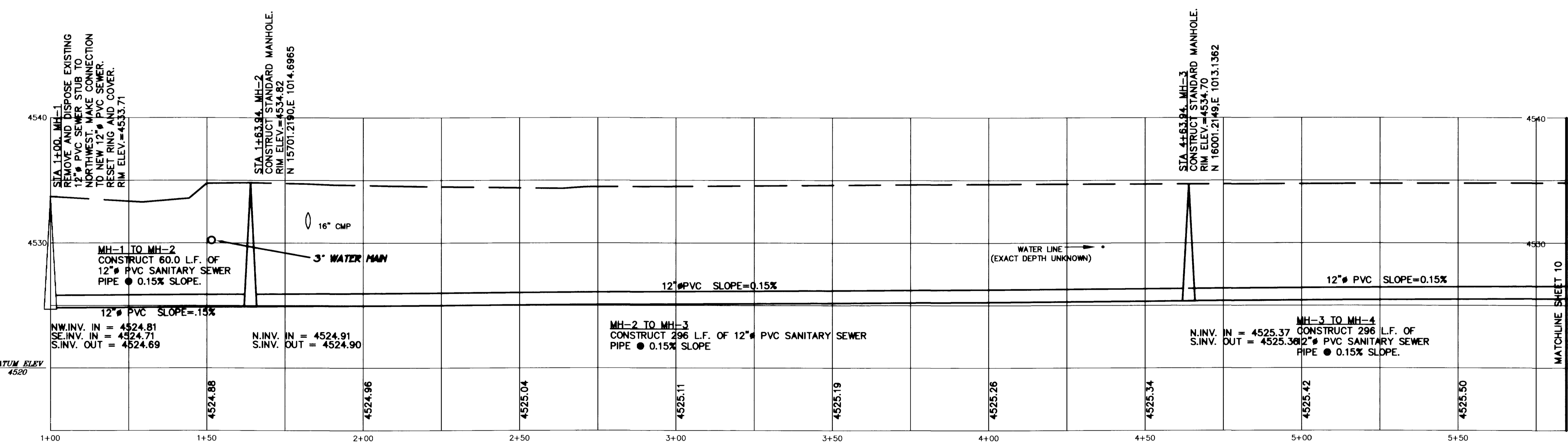
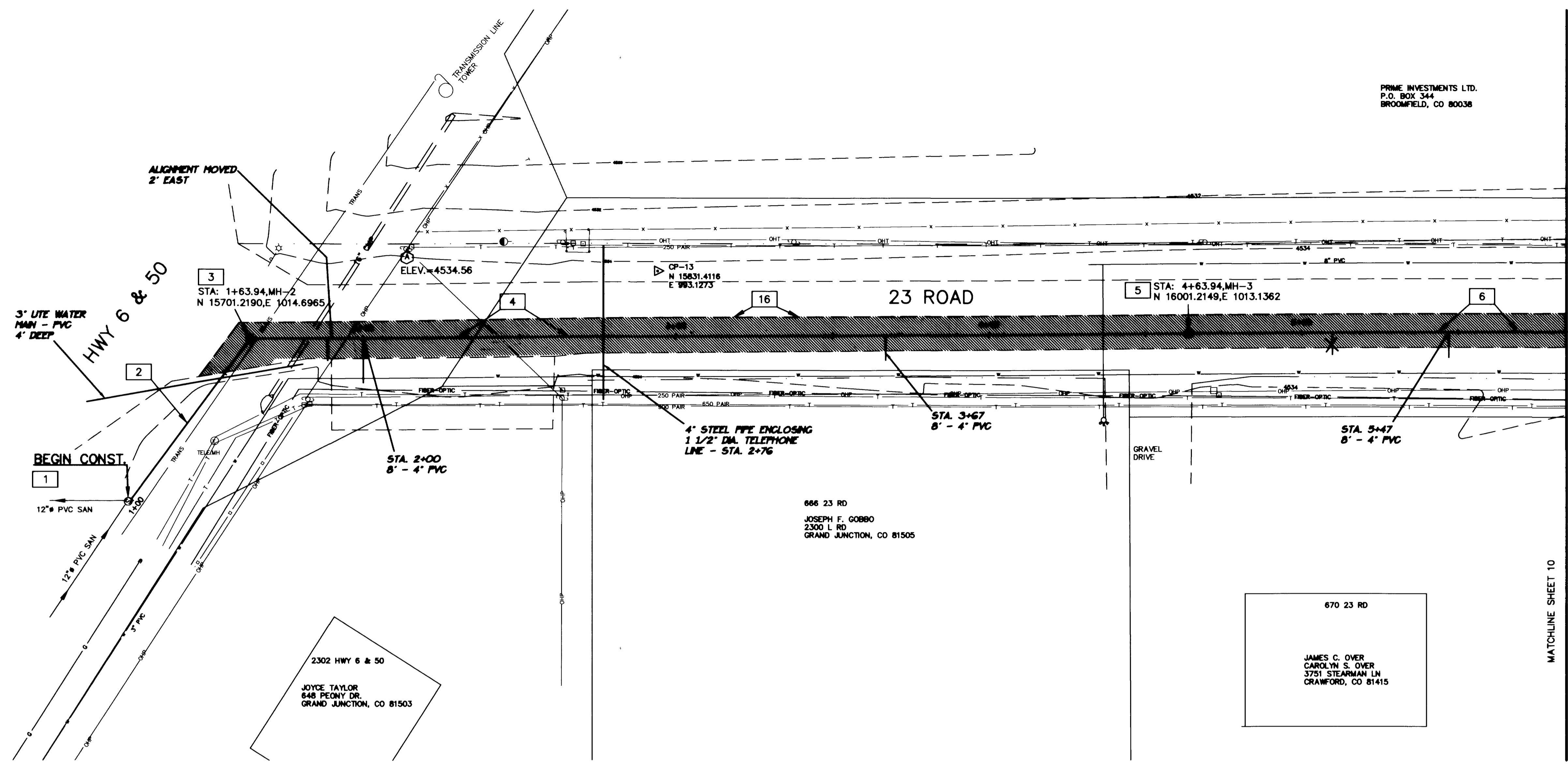
PRIME INVESTMENTS LTD.
P.O. BOX 344
BROOMFIELD, CO 80038



FEET 20 0 20 FEET
GRAPHIC SCALE
SCALE: 1 INCH = 20 FEET

LEGEND

- BENCHMARK
- CONTROL POINT
- SECTION CORNER
- EXISTING EDGE OF ASPHALT
- EXISTING FILL SHOULDER
- EXISTING EARTH DITCH
- EXISTING OVERHEAD UTILITIES
- EXISTING BURIED TELEPHONE
- EXISTING WATER LINE
- EXISTING FIBER OPTIC LINE
- EXISTING SAN SEWER MANHOLE
- EXISTING WATER VALVES
- EXISTING UTILITY POLES
- EXISTING TELEPHONE PEDESTALS
- EXISTING BOLLARDS AND RAIL
- EXISTING GAS LINE
- EXISTING GAS VALVE
- EXISTING WIRE FENCES
- EXISTING WOOD FENCE
- EXISTING GUY WIRE
- EXISTING MAILBOX
- CONSTRUCT SEWER MAIN AND SERVICES
- CONSTRUCT SEWER MANHOLES
- CUT LINE: PLACE 8" CL-6
- BASE COURSE AND 3" HBP GR-C



CONSTRUCTION NOTES

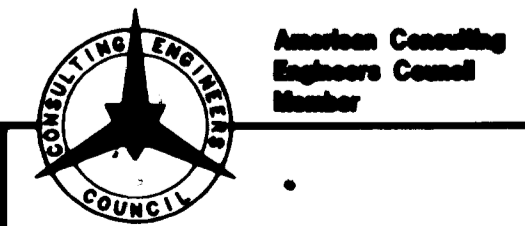
- 1 STA 1+00, MH-1 TIED INTO REMOVE AND DISPOSE EXISTING 12" PVC SEWER STUB TO NORTHWEST. MAKE CONNECTION TO NEW 12" PVC SEWER. RESET RING AND COVER. RIM ELEV.=4533.71
- 2 STA 1+00 TO STA 1+63.94, MH-2 CONSTRUCT 60.0 L.F. OF 12" PVC SANITARY SEWER PIPE @ 0.15% SLOPE.
- 3 STA 1+63.94, MH-2 CONSTRUCT STANDARD MANHOLE. RIM ELEV.=4534.82 N 15701.2190,E 1014.6965
- 4 MH-2 TO MH-3 CONSTRUCT 296 L.F. OF 12" PVC SANITARY SEWER PIPE @ 0.15% SLOPE
- 5 STA 4+63.94, MH-3 CONSTRUCT STANDARD MANHOLE. RIM ELEV.=4534.70 N 16001.2149,E 1013.1362
- 6 MH-3 TO MH-4 CONSTRUCT 296 L.F. OF 12" PVC SANITARY SEWER PIPE @ 0.15% SLOPE.
- 16 CUT 23 ROAD AT CENTERLINE. REMOVE AND DISPOSE EXISTING ASPHALT PAVEMENT RT. OF CENTERLINE. CONSTRUCT 8" OF AGGREGATE BASE(CDOT CL-6) AND 3" OF BITUMINOUS PAVEMENT(CDOT HBP-GR C).

AS CONSTRUCTED

SEGMENT 5

5-12-95

DRAWN BY: BKR REVIEWED: _____ DATE: _____ FOR _____	CHECKED BY: KJB REVIEWED: _____ DATE: _____ FOR BANNER ASSOCIATES, INC.
--	--



BANNER

BANNER ASSOCIATES, INC. • CONSULTING ENGINEERS & SURVEYORS
2777 CROSSROADS BOULEVARD • GRAND JUNCTION, CO 81506 • (303) 243-2242
605 E. MAIN • SUITE 6 • ASPEN, CO 81611 • (303) 925-5857

REVISION	DATE	DESCRIPTION	BY	CHKD

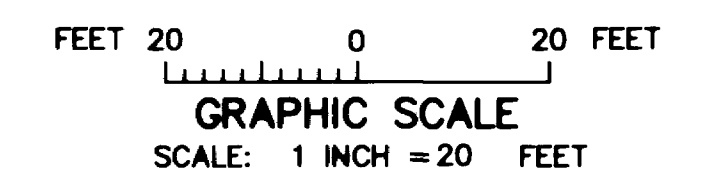
CITY OF GRAND JUNCTION	GRAND JUNCTION, COLORADO	SCALE: Metric: 1"=20' Virt: 1"=5'	Project No: 8301-01
SANITARY SEWER LINE REPLACEMENT AND EXTENSION 23 ROAD NORTH FROM HWY 6 & 50		DATE: 6/29/94	SHEET NO: 9 OF 15

WALLACE G. BEARD
2041 N 8TH ST
GRAND JUNCTION, CO 81501

PRIME INVESTMENTS LTD.
P.O. BOX 344
BROOMFIELD, CO 80038

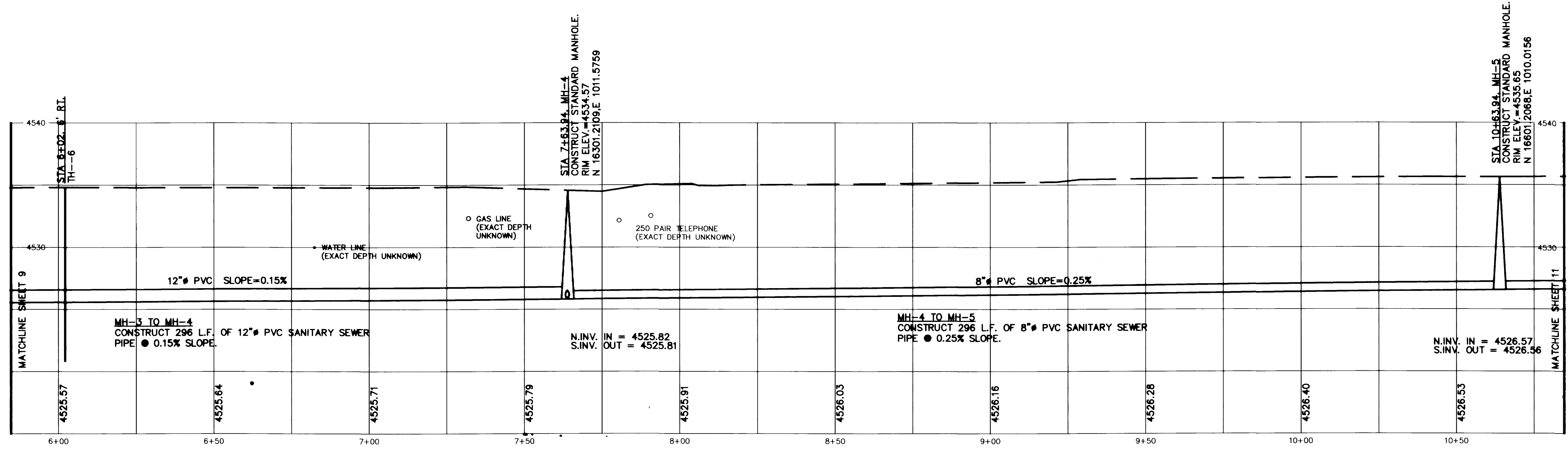
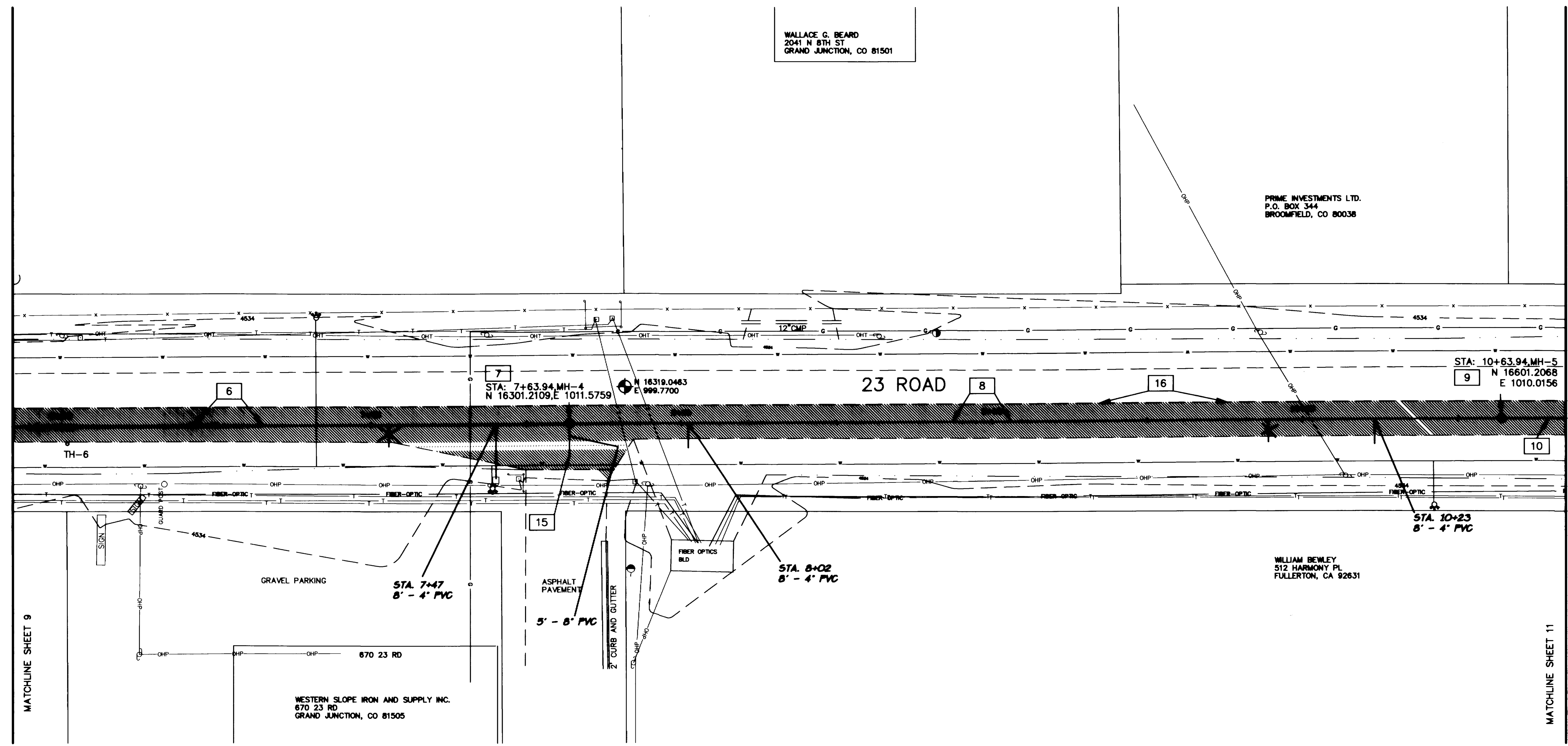
WILLIAM BEWLEY
512 HARMONY PL
FULLERTON, CA 92631

WESTERN SLOPE IRON AND SUPPLY INC.
670 23 RD
GRAND JUNCTION, CO 81505



LEGEND

- BENCHMARK
- CONTROL POINT
- SECTION CORNER
- EXISTING EDGE OF ASPHALT
- EXISTING FILL SHOULDER
- EXISTING EARTH DITCH
- EXISTING OVERHEAD UTILITIES
- EXISTING BURIED TELEPHONE
- EXISTING WATER LINE
- EXISTING FIBER OPTIC LINE
- EXISTING SAN SEWER MANHOLE
- EXISTING WATER VALVES
- EXISTING UTILITY POLES
- EXISTING TELEPHONE PEDESTALS
- EXISTING BOLLARDS AND RAIL
- EXISTING GAS LINE
- EXISTING GAS VALVE
- EXISTING WIRE FENCES
- EXISTING WOOD FENCE
- EXISTING GUY WIRE
- EXISTING MAILBOX
- CONSTRUCT SEWER MAIN AND SERVICES
- CONSTRUCT SEWER MANHOLES
- CUT LINE, PLACE 8" CL-6
- BASE COURSE AND 3" HBP
- GR-C



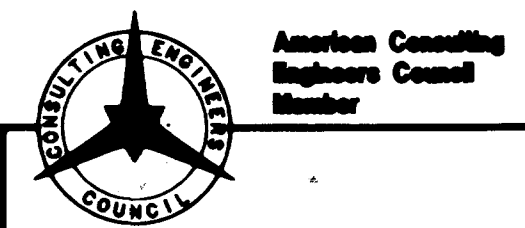
- CONSTRUCTION NOTES**
- 6 MH-3 TO MH-4
CONSTRUCT 296 L.F. OF 12" PVC SANITARY SEWER PIPE @ 0.15% SLOPE.
 - 7 STA 7+63.94, MH-4
CONSTRUCT STANDARD MANHOLE. RIM ELEV.=4534.57
N 16301.2109, E 1011.5759
 - 8 MH-4 TO MH-5
CONSTRUCT 296 L.F. OF 8" PVC SANITARY SEWER PIPE @ 0.25% SLOPE.
 - 9 STA 10+63.94, MH-5
CONSTRUCT STANDARD MANHOLE. RIM ELEV.=4535.65
N 16601.2068, E 1010.0156
 - 10 MH-5 TO MH-6
CONSTRUCT 296 L.F. OF 8" PVC SANITARY SEWER PIPE @ 0.25% SLOPE.
 - 15 STUB OUT 8" PVC, SDR 35 SEWER PIPE, 5-10 FEET @ +0.25% SLOPE AND CAP END.
 - 16 CUT 23 ROAD AT CENTERLINE. REMOVE AND DISPOSE EXISTING ASPHALT PAVEMENT RT. OF CENTERLINE. CONSTRUCT 8" OF AGGREGATE BASE (CDOT CL-6) AND 3" OF BITUMINOUS PAVEMENT (CDOT HBP-GR C).

AS CONSTRUCTED

SEGMENT 5

5-12-95

DRAWN BY: BKR REVIEWED _____ DATE: _____ FOR _____	CHECKED BY: KJB REVIEWED _____ DATE: _____ FOR BANNER ASSOCIATES, INC.
---	---



BANNER
BANNER ASSOCIATES, INC. • CONSULTING ENGINEERS & SURVEYORS
2777 CROSSROADS BOULEVARD • GRAND JUNCTION, CO 81506 • (303) 243-2242
605 E. MAIN • SUITE 6 • ASPEN, CO 81611 • (303) 925-5657

REVISION	DATE	DESCRIPTION	BY	CHKD

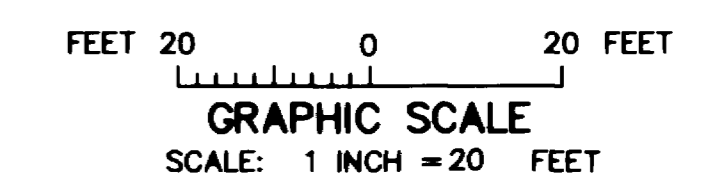
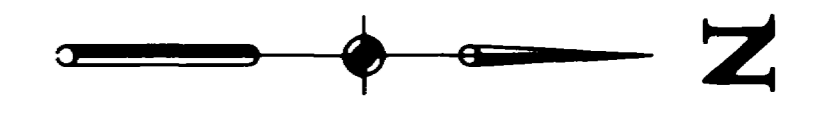
CITY OF GRAND JUNCTION	GRAND JUNCTION, COLORADO	SCALE: Metric: 1"=20' Vetric: 1"=5'	Project No: 8301-01
SANITARY SEWER LINE REPLACEMENT AND EXTENSION 23 ROAD NORTH FROM HWY 6 & 50		DATE: 6/29/94	SHEET NO: 10 OF 15

PRIME INVESTMENTS LTD.
P.O. BOX 344
BROOMFIELD, CO 80038

PRIME INVESTMENTS LTD.
P.O. BOX 344
BROOMFIELD, CO 80038

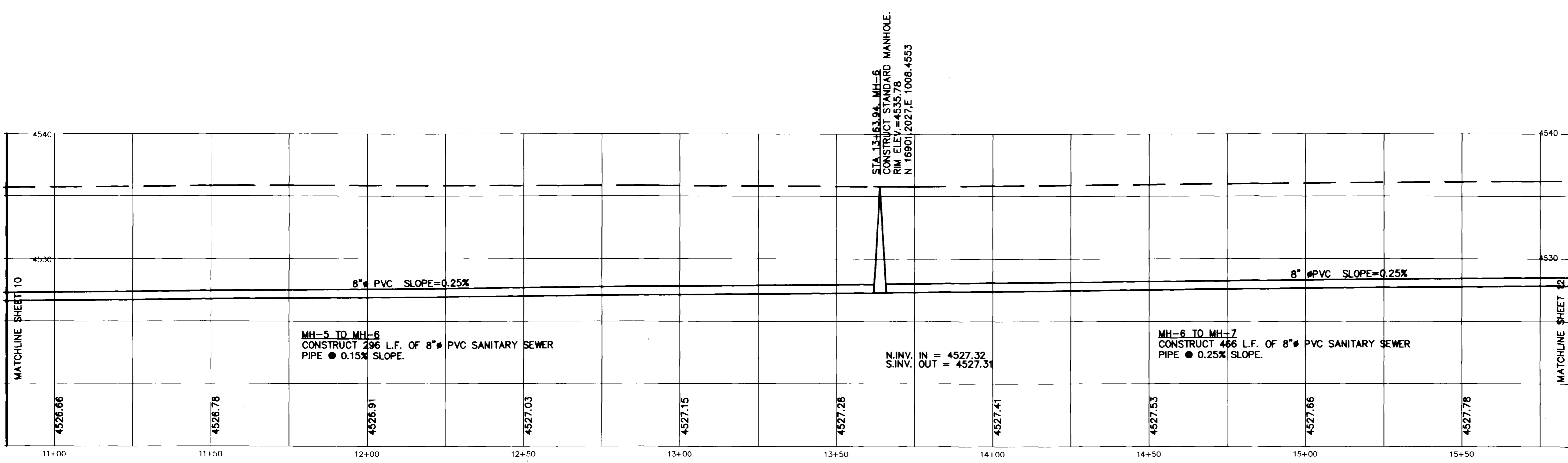
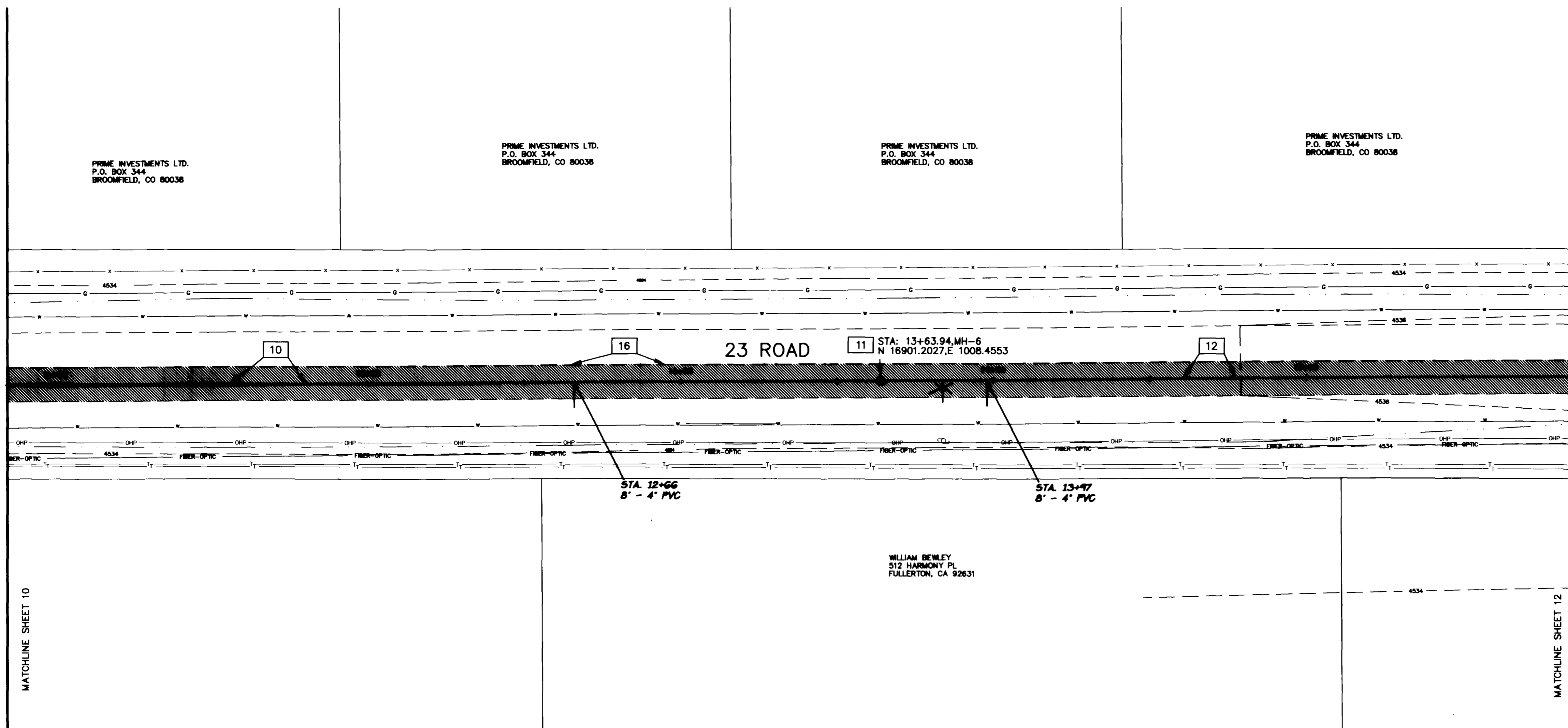
PRIME INVESTMENTS LTD.
P.O. BOX 344
BROOMFIELD, CO 80038

PRIME INVESTMENTS LTD.
P.O. BOX 344
BROOMFIELD, CO 80038



LEGEND

- BENCHMARK
- CONTROL POINT
- SECTION CORNER
- EXISTING EDGE OF ASPHALT
- EXISTING FILL SHOULDER
- EXISTING EARTH DITCH
- EXISTING OVERHEAD UTILITIES
- EXISTING BURIED TELEPHONE
- EXISTING WATER LINE
- EXISTING FIBER OPTIC LINE
- EXISTING SAN SEWER MANHOLE
- EXISTING WATER VALVES
- EXISTING UTILITY POLES
- EXISTING TELEPHONE PEDESTALS
- EXISTING BOLLARDS AND RAIL
- EXISTING GAS LINE
- EXISTING GAS VALVE
- EXISTING WIRE FENCES
- EXISTING WOOD FENCE
- EXISTING GUY WIRE
- CONSTRUCT MAILBOX
- CONSTRUCT SEWER MAIN AND SERVICES
- CONSTRUCT SEWER MANHOLES
- CUT LINE, PLACE 8" CL-6
- BASE COURSE AND 3" HBP
- GR-C



CONSTRUCTION NOTES

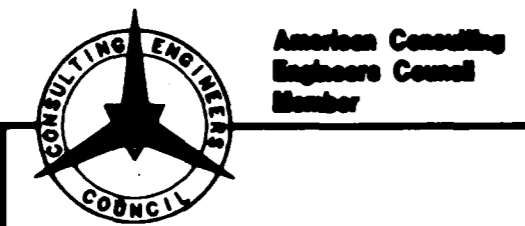
- 10 MH-5 TO MH-6
CONSTRUCT 296 L.F. OF 8" # PVC SANITARY SEWER PIPE @ 0.15% SLOPE.
- 11 STA 13+63.94, MH-6
CONSTRUCT STANDARD MANHOLE. RIM ELEV.=4534.57 N 16901.2027,E 1008.4553
- 12 MH-6 TO MH-7
CONSTRUCT 466 L.F. OF 8" # PVC SANITARY SEWER PIPE @ 0.25% SLOPE.
- 16 CUT 23 ROAD AT CENTERLINE. REMOVE AND DISPOSE EXISTING ASPHALT PAVEMENT RT. OF CENTERLINE. CONSTRUCT 8" OF AGGREGATE BASE(CDOT CL-6) AND 3" OF BITUMINOUS PAVEMENT(CDOT HBP-GR C).

AS CONSTRUCTED

SEGMENT 5

5-12-95

DRAWN BY: BKR	REVIEWED _____ DATE: _____ FOR _____
CHECKED BY: KJB	REVIEWED _____ DATE: _____ FOR BANNER ASSOCIATES, INC.



BANNER

BANNER ASSOCIATES, INC. • CONSULTING ENGINEERS & SURVEYORS
2777 CROSSROADS BOULEVARD • GRAND JUNCTION, CO 81506 • (303) 243-2242
605 E. MAIN • SUITE 6 • ASPEN, CO 81611 • (303) 925-5057

REVISION	DATE	DESCRIPTION	BY	CHKD

CITY OF GRAND JUNCTION
GRAND JUNCTION, COLORADO

SANITARY SEWER LINE REPLACEMENT AND EXTENSION
23 ROAD NORTH FROM HWY 6 & 50

SCALE: HORIZ: 1"=20' VERT: 1"=5'	Project No: 8301-01
DATE: 6/29/94	SHEET NO: 11 OF 15

PRIME INVESTMENTS LTD.
P.O. BOX 344
BROOMFIELD, CO 80038

PRIME INVESTMENTS LTD.
P.O. BOX 344
BROOMFIELD, CO 80038

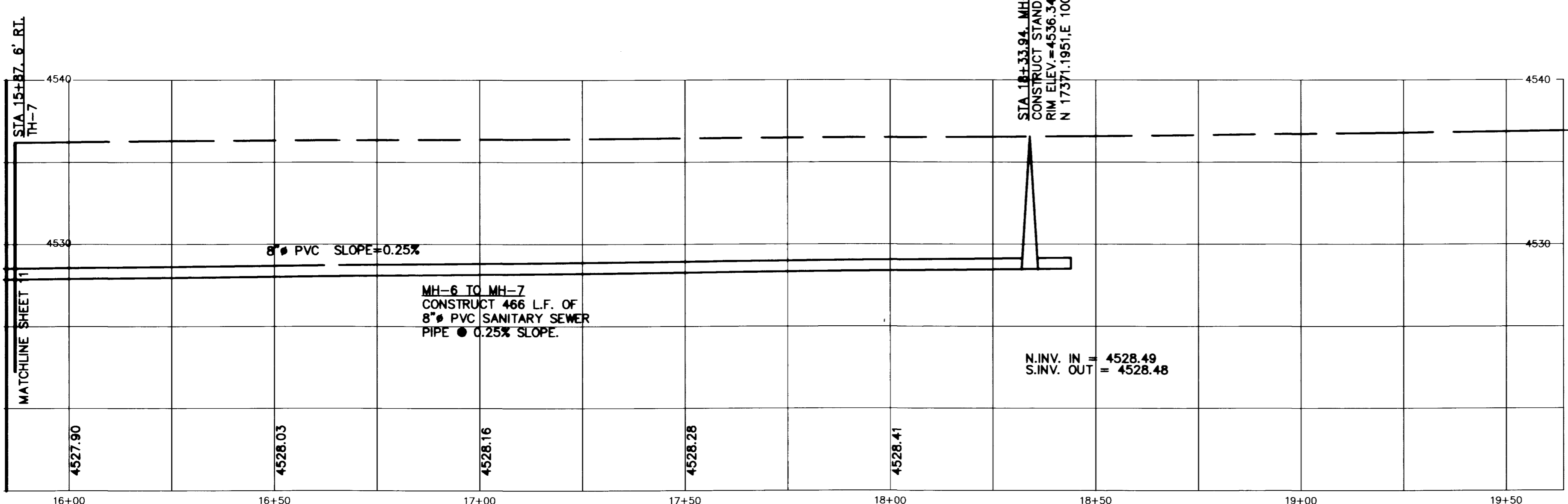
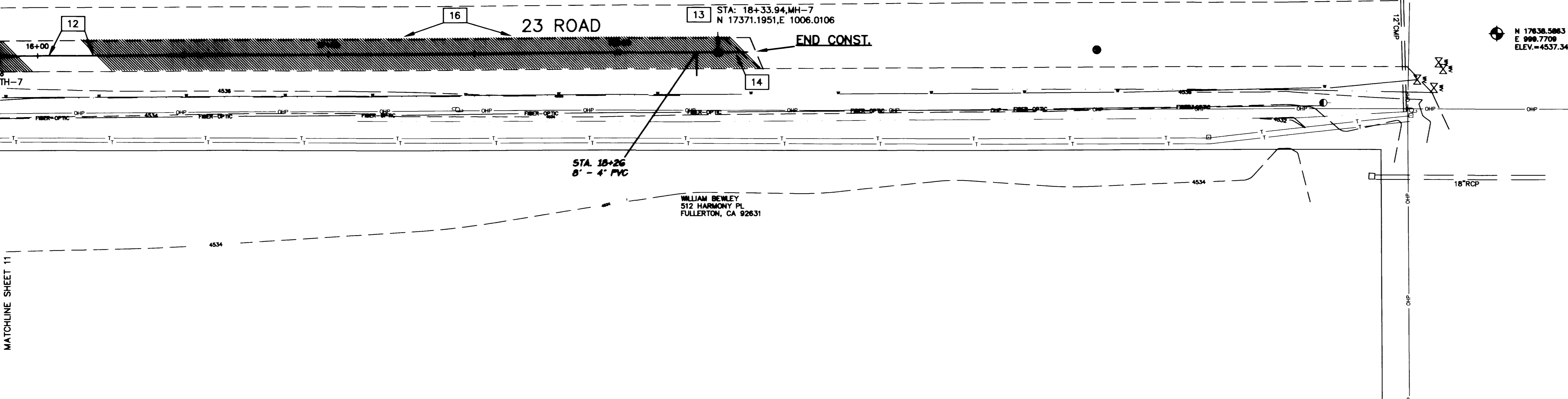
PRIME INVESTMENTS LTD.
P.O. BOX 344
BROOMFIELD, CO 80038



FEET 20 0 20 FEET
GRAPHIC SCALE
SCALE: 1 INCH = 20 FEET

LEGEND

- BENCHMARK
- CONTROL POINT
- SECTION CORNER
- EXISTING EDGE OF ASPHALT
- EXISTING FILL SHOULDER
- EXISTING EARTH DITCH
- EXISTING OVERHEAD UTILITIES
- EXISTING BURIED TELEPHONE
- EXISTING WATER LINE
- EXISTING FIBER OPTIC LINE
- EXISTING SAN SEWER MANHOLE
- EXISTING WATER VALVES
- EXISTING UTILITY POLES
- EXISTING TELEPHONE PEDESTALS
- EXISTING BOLLARDS AND RAIL
- EXISTING GAS LINE
- EXISTING GAS VALVE
- EXISTING WIRE FENCES
- EXISTING WOOD FENCE
- EXISTING GUY WIRE
- EXISTING MAILBOX
- CONSTRUCT SEWER MAIN AND SERVICES
- CONSTRUCT SEWER MANHOLES
- CUT LINE, PLACE 8" CL-6 BASE COURSE AND 3" HBP GR-C



CONSTRUCTION NOTES

- 12 MH-6 TO MH-7
CONSTRUCT 466 L.F. OF 8" PVC SANITARY SEWER PIPE @ 0.25% SLOPE.
- 13 STA 18+33.94, MH-7
CONSTRUCT STANDARD MANHOLE. RIM ELEV.=4536.55
N 17371.1951,E 1006.0106
- 14 MH-7
STUB OUT 8" PVC, SDR 35, SEWER PIPE
10 FEET @ +0.25% SLOPE AND CAP END.
- 16 CUT 23 ROAD AT CENTERLINE. REMOVE AND DISPOSE EXISTING ASPHALT PAVEMENT RT. OF CENTERLINE. CONSTRUCT 8" OF AGGREGATE BASE (CDOT CL-6) AND 3" OF BITUMINOUS PAVEMENT (CDOT HBP-GR C).

AS CONSTRUCTED
5-12-95

SEGMENT 5

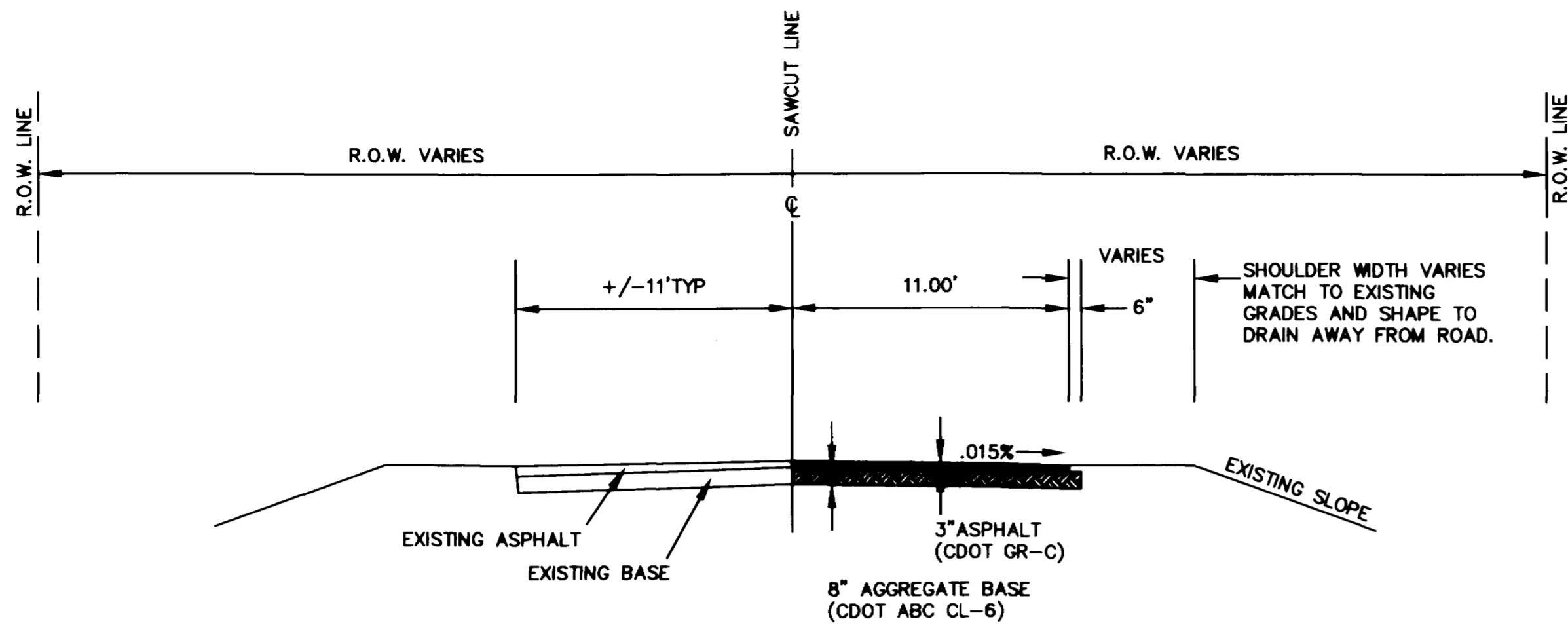
DRAWN BY: BKR	REVIEWED _____ DATE: _____ FOR _____
CHECKED BY: KJB	REVIEWED _____ DATE: _____ FOR BANNER ASSOCIATES, INC.



BANNER
BANNER ASSOCIATES, INC. • CONSULTING ENGINEERS & SURVEYORS
2777 CROSSROADS BOULEVARD • GRAND JUNCTION, CO 81506 • (303) 243-2242
605 E. MAIN • SUITE 6 • ASPEN, CO 81611 • (303) 925-5857

REVISION	DATE	DESCRIPTION	BY	CHKD

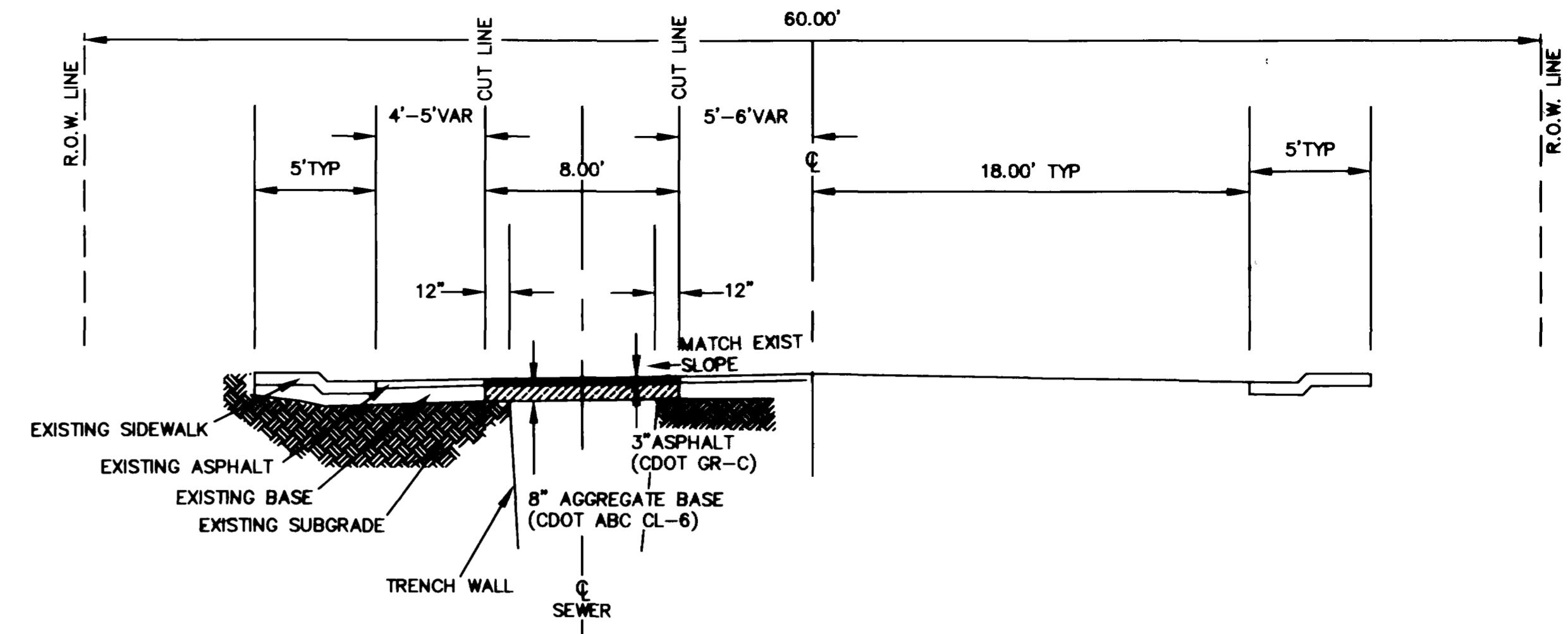
CITY OF GRAND JUNCTION	GRAND JUNCTION, COLORADO	SCALE: HORIZ: 1"=20' VERT: 1"=5'	Project No: 8301-01
SANITARY SEWER LINE REPLACEMENT AND EXTENSION 23 ROAD NORTH FROM HWY 6 & 50		DATE: 6/29/94	SHEET NO: 12 OF 15



23 ROAD TYPICAL

SCALE: 1"=5'

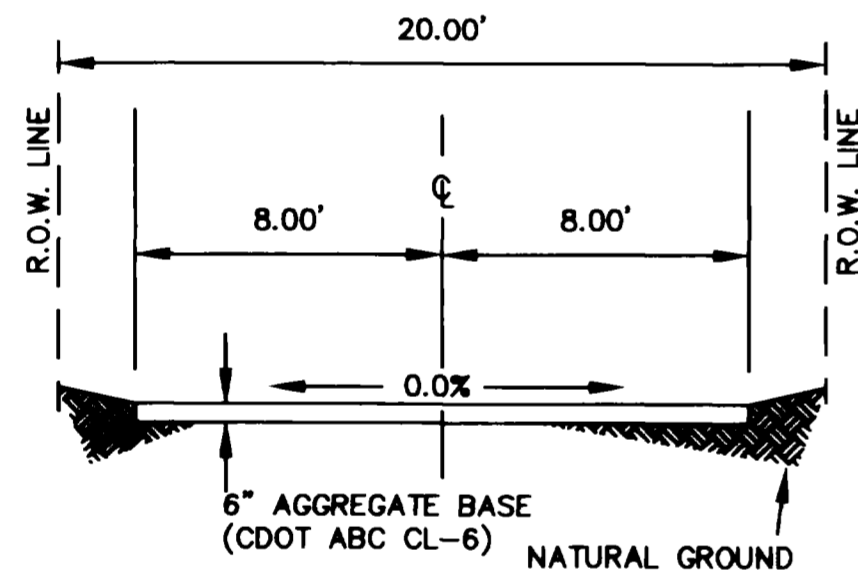
NOTE: CUT ALONG EXISTING CENTERLINE AND REMOVE EXISTING ASPHALT PAVEMENT. CONSTRUCT TO THE TYPICAL AS SHOWN.



GRAND AVENUE TYPICAL

SCALE: 1"=5'

NOTE: CUT EXISTING ASPHALT 4 FEET LT. AND RT. OF SEWERLINE. CONSTRUCT TO THE TYPICAL AS SHOWN.



ALLEY TYPICAL

SCALE: 1"=5'

AS CONSTRUCTED

5-12-85

DRAWN BY: BKR	REVIEWED _____ DATE: _____ FOR _____
DESIGNED BY: BKR	REVIEWED _____ DATE: _____ FOR BANNER ASSOCIATES, INC.
CHECKED BY: KJB	



BANNER

BANNER ASSOCIATES, INC. • CONSULTING ENGINEERS & SURVEYORS
2777 CROSSROADS BOULEVARD • GRAND JUNCTION, CO 81506 • (303) 243-2242
605 E. MAIN • SUITE 6 • ASPEN, CO 81611 • (303) 925-5657

REVISION	DATE	DESCRIPTION	BY	CHD

CITY OF GRAND JUNCTION	GRAND JUNCTION, COLORADO	SCALE: AS NOTED	JOB NO: 8304-01	DATE: 8/4/84
DETAILS		13 OF 15		