

I hereby certify that these Plans (3 Sheets) for the construction of a sewer line including the manholes for the Fairway Sewer District on Orchard Mesa, in Mesa County, Colorado in Section 26, Township 1 South, Range 1 West, Ute Meridian were prepared by me for the owners thereof.

*Francis J. Thomas*  
 Registered Engineer Colorado Licence No. 1977

Subscribed and sworn to before me this 9th day of June, 1973.

*Robert H. Carman*  
 Notary Public

My commission expires June 28, 1975  
 Revised 6-28-73  
 Revised 8-26-73 As built

**KEY MAP**

PROPOSED PLAN OF  
**FAIRWAY SEWER DISTRICT**  
 ON ORCHARD MESA  
 Sheet 1 of 3

---

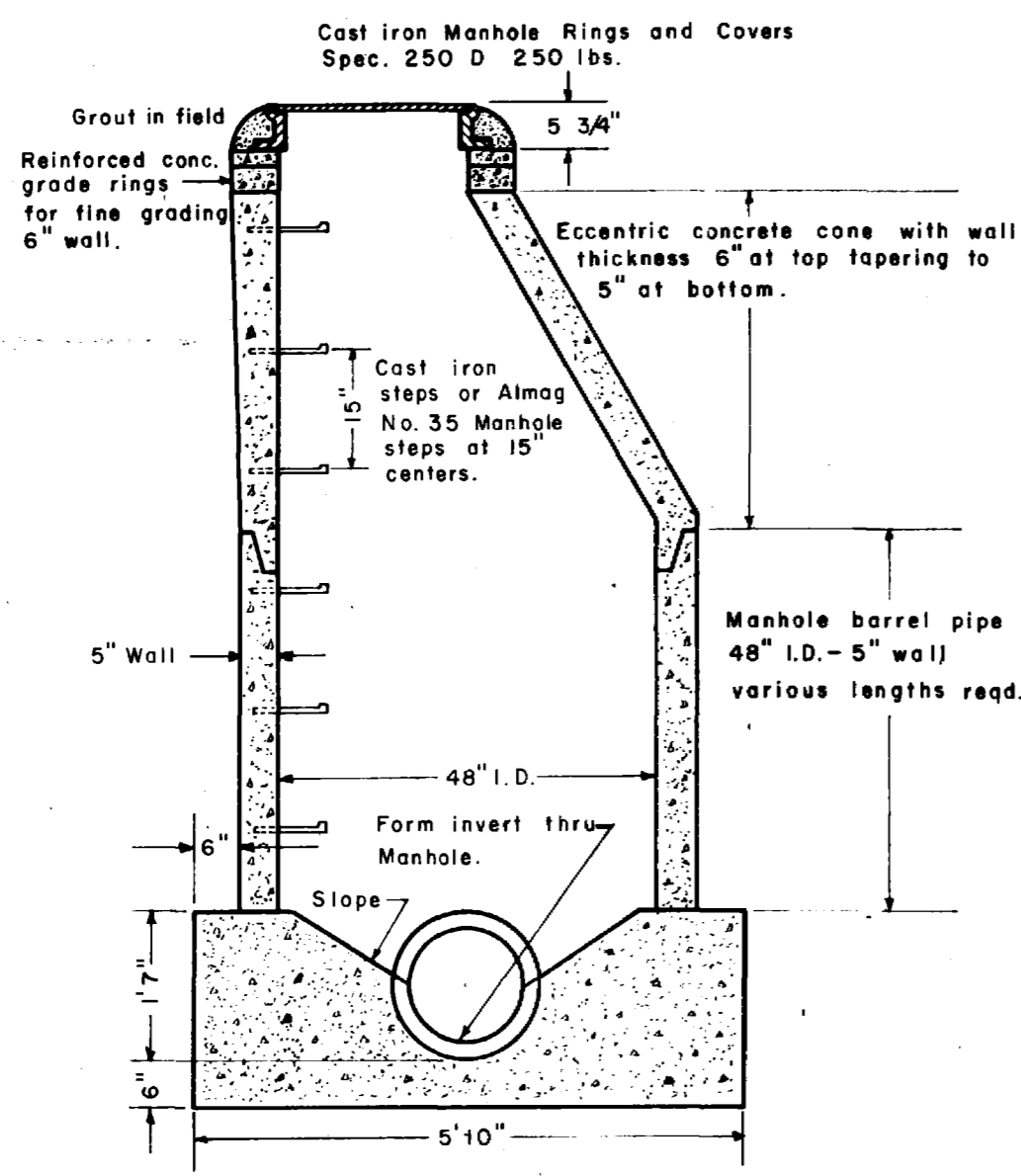
SURVEYED F.J.T. B.B. & S.C.  
 DRAWN R.H. CARMAN 5-26-73

**MANHOLES** shall be made from Precast Reinforced concrete concrete conforming to ASTM C-478 using Almag No. 35 steps spaced vertically no more than 15-inch centers. The cast iron rings and covers shall meet Grand Junction City Specification No. 250 D, 24 inch nominal diameter. Grade rings for fine grading the Cast Iron Ring and cover shall be precast reinforced concrete. Manholes 5 feet deep or less do not require steps.

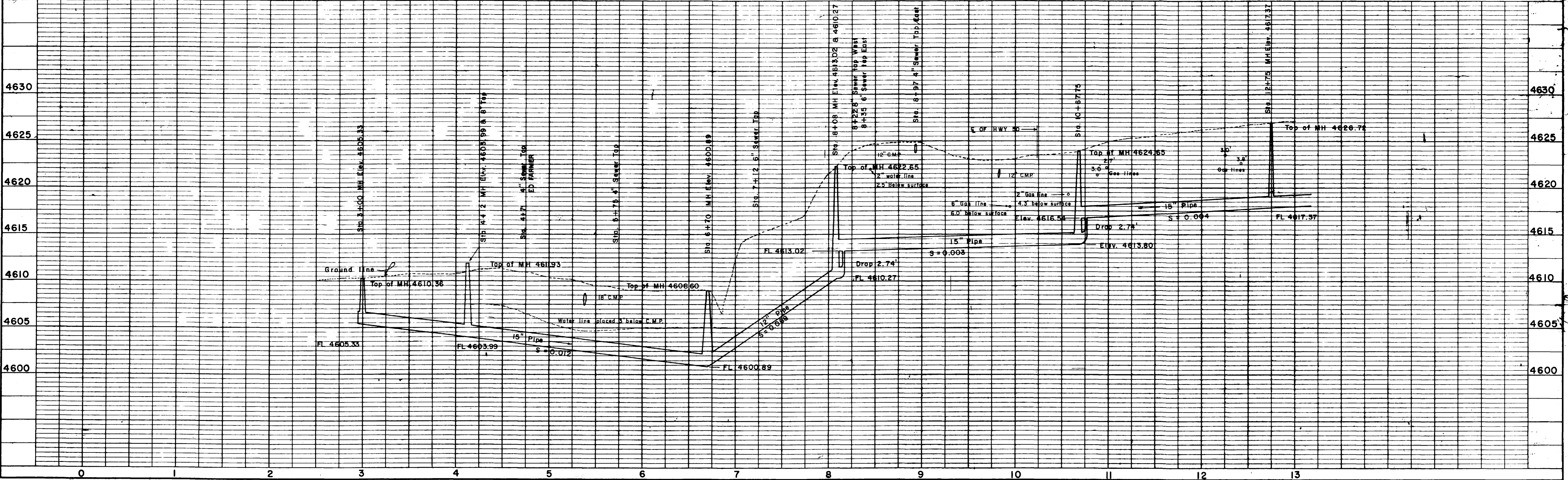
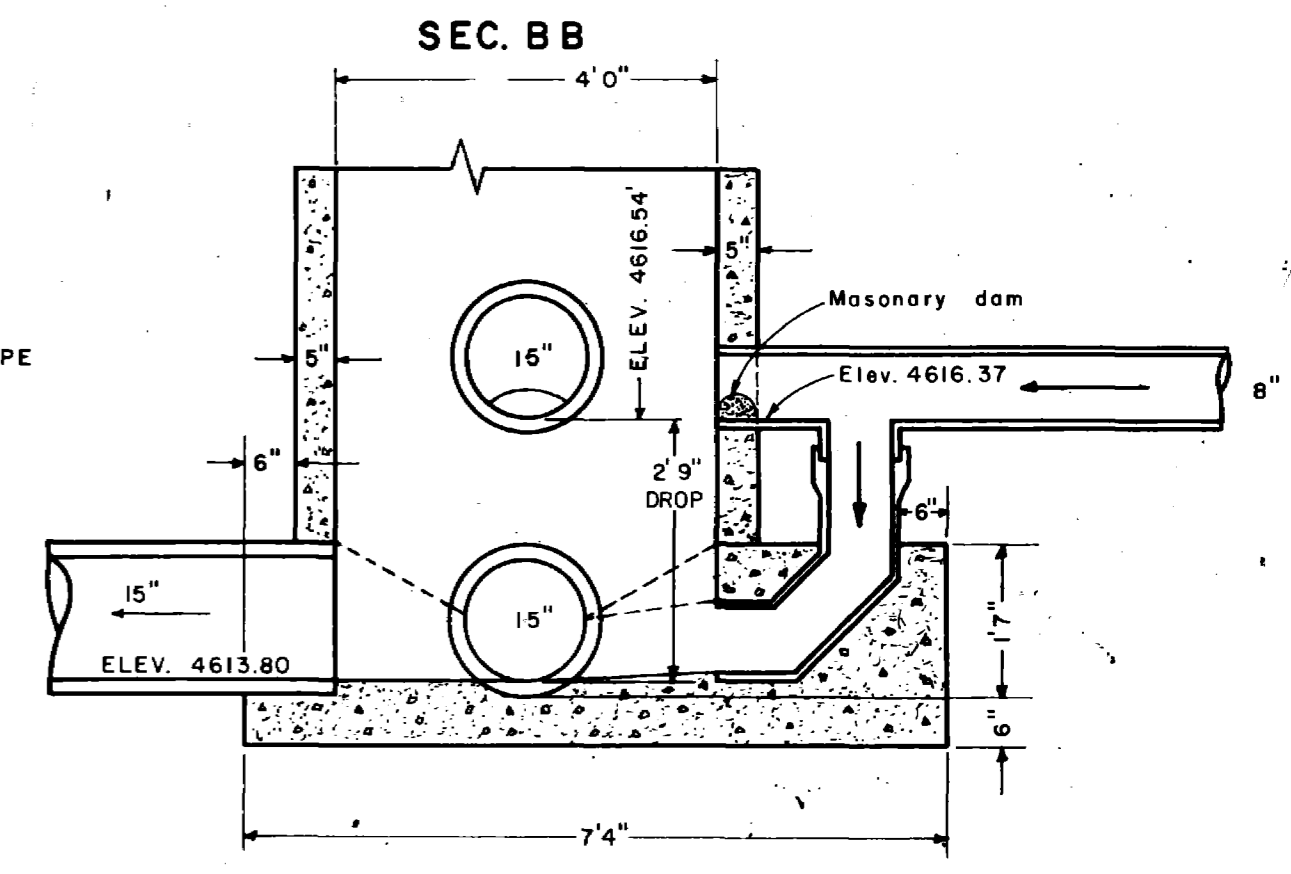
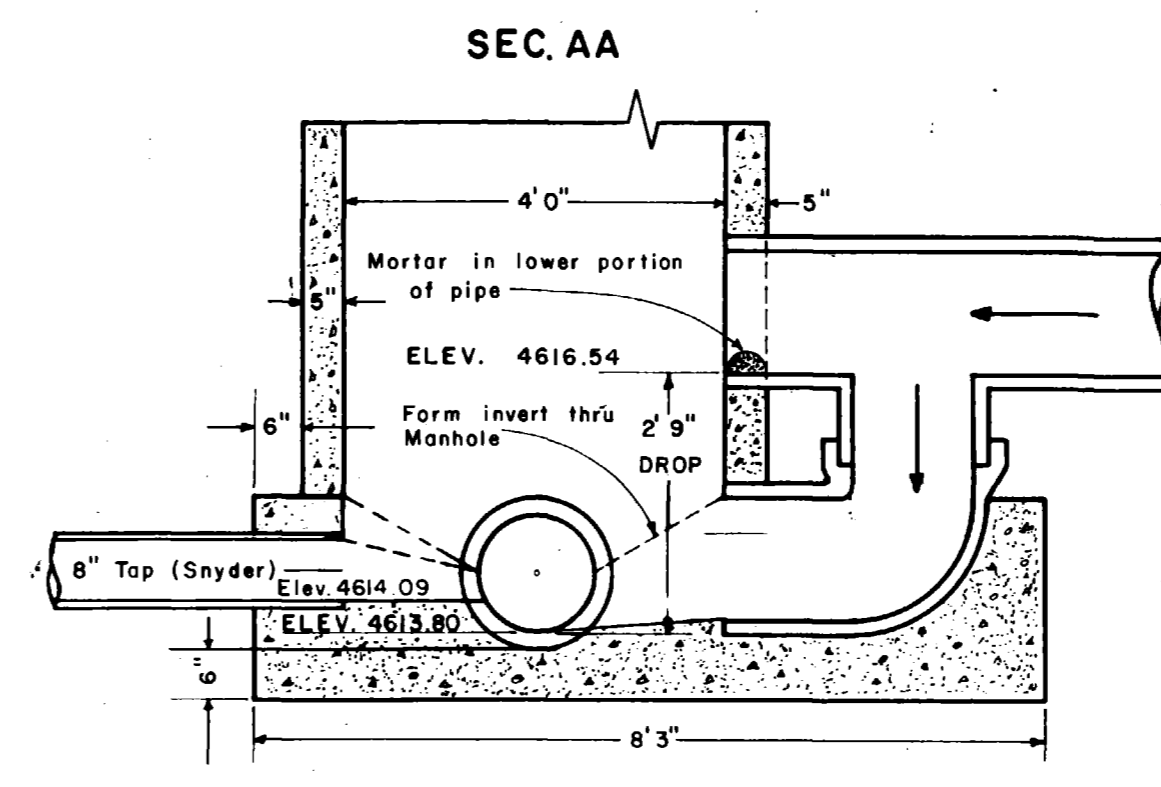
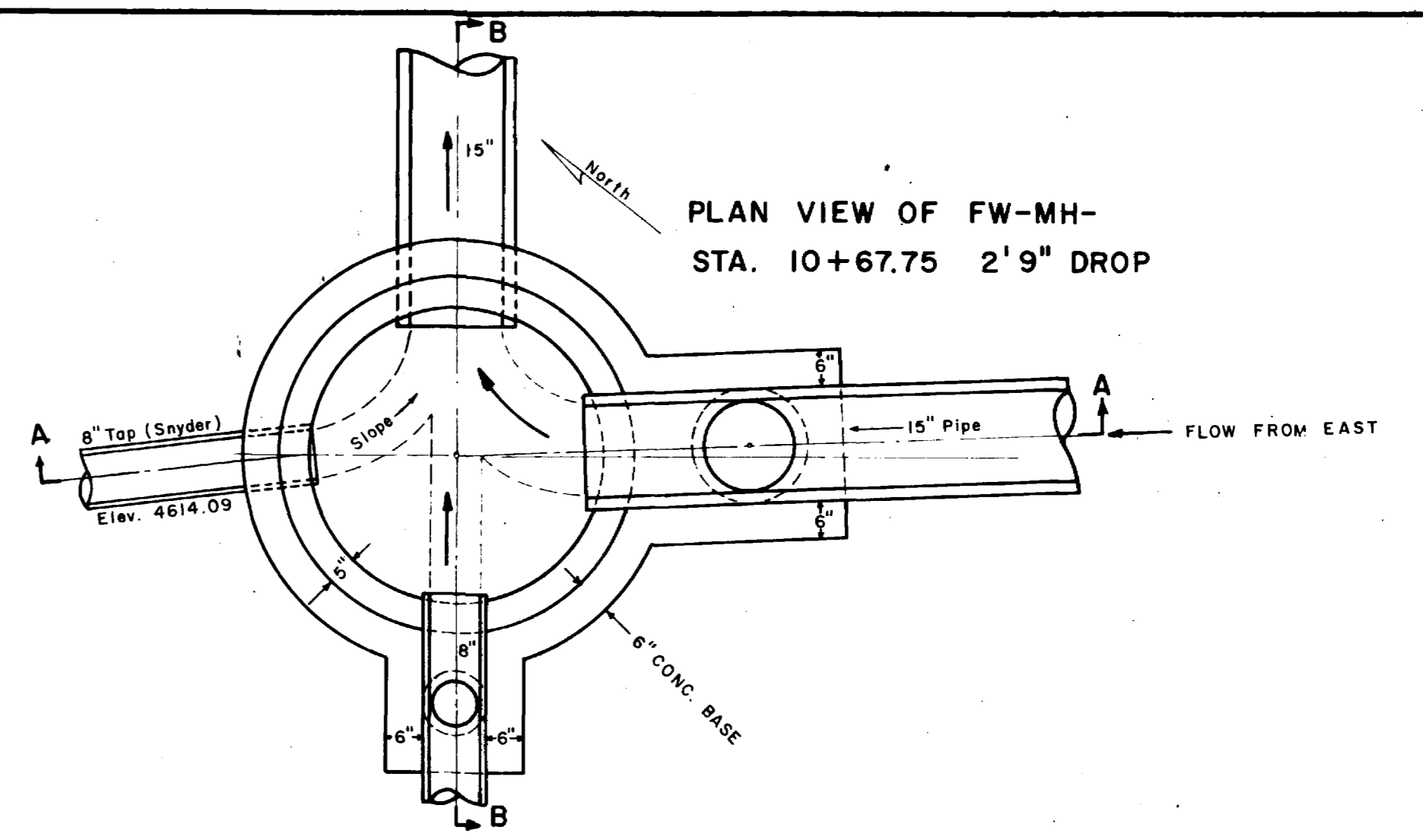
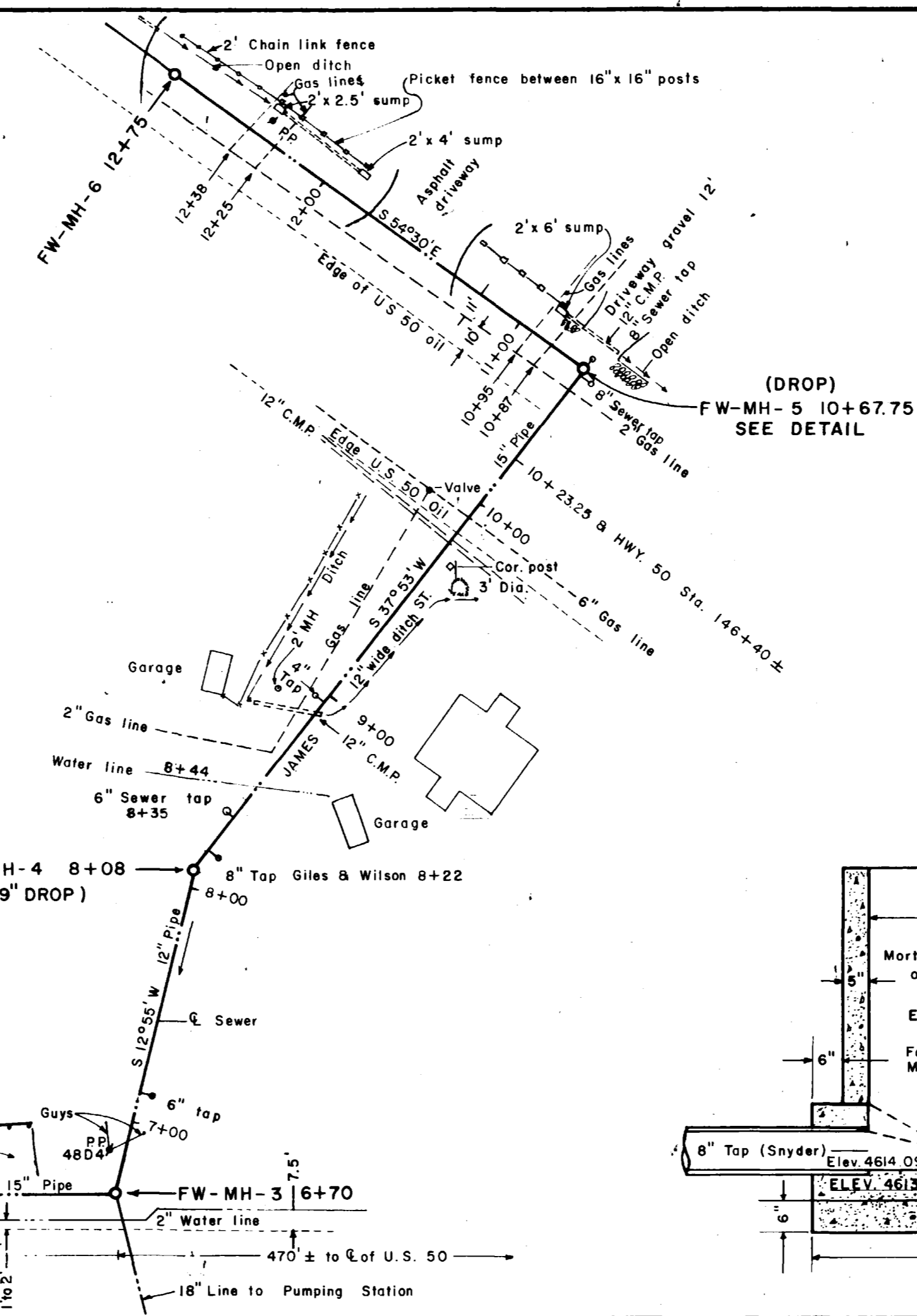
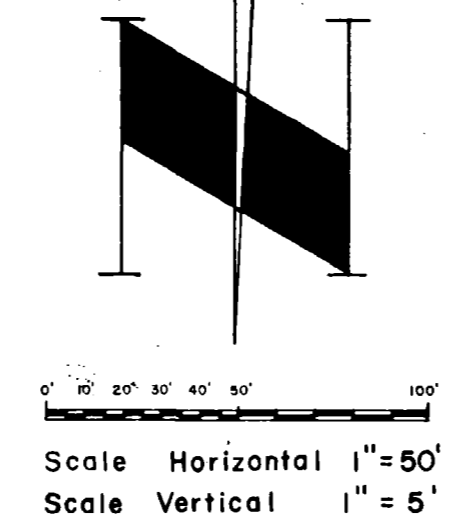
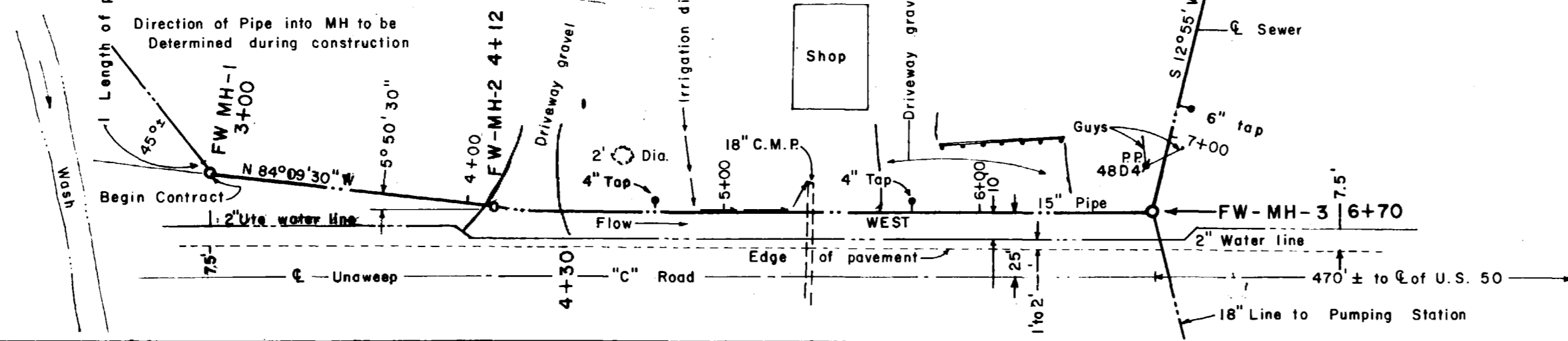
**CONCRETE SEWER PIPE** shall conform to ASTM C14, extra strength using Type II Cement and with joints using rubber gaskets conforming to ASTM C 443.

**POLYVINYL CHLORIDE (PVC)** sewer pipe shall conform to ASTM D 3033 or D 3034 and shall be installed according to Manufacturers recommendations, and should be buried to a depth of 3 feet or more.

Note: One additional length of pipe shall be installed at each location of the sewer taps shown on these drawings, also at the taps at manholes.

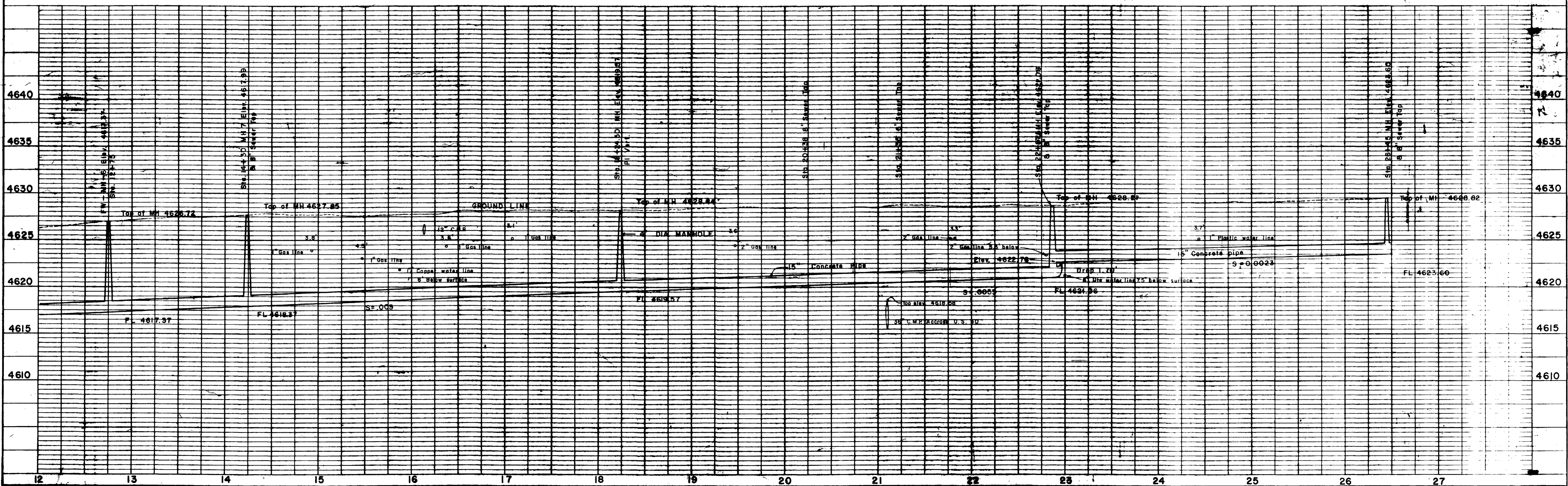
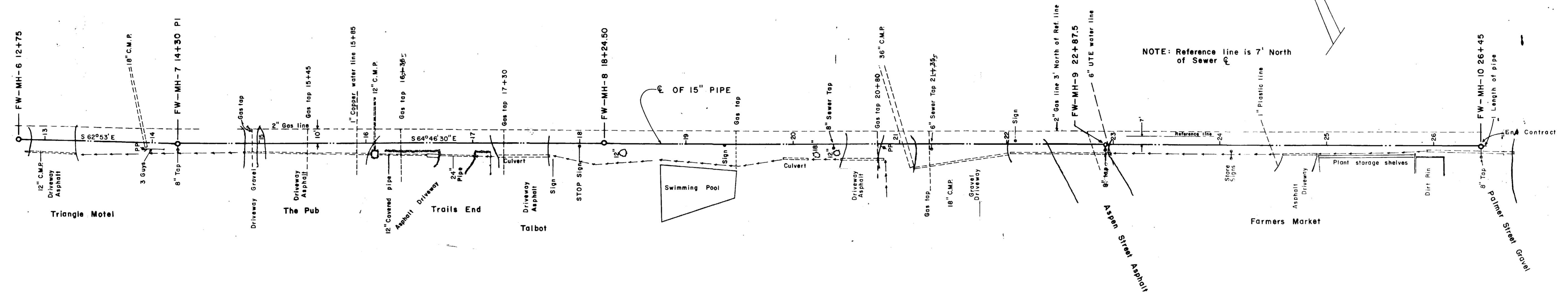


**STANDARD PRECAST REINFORCED CONCRETE MANHOLE**  
ASTM C-478-65



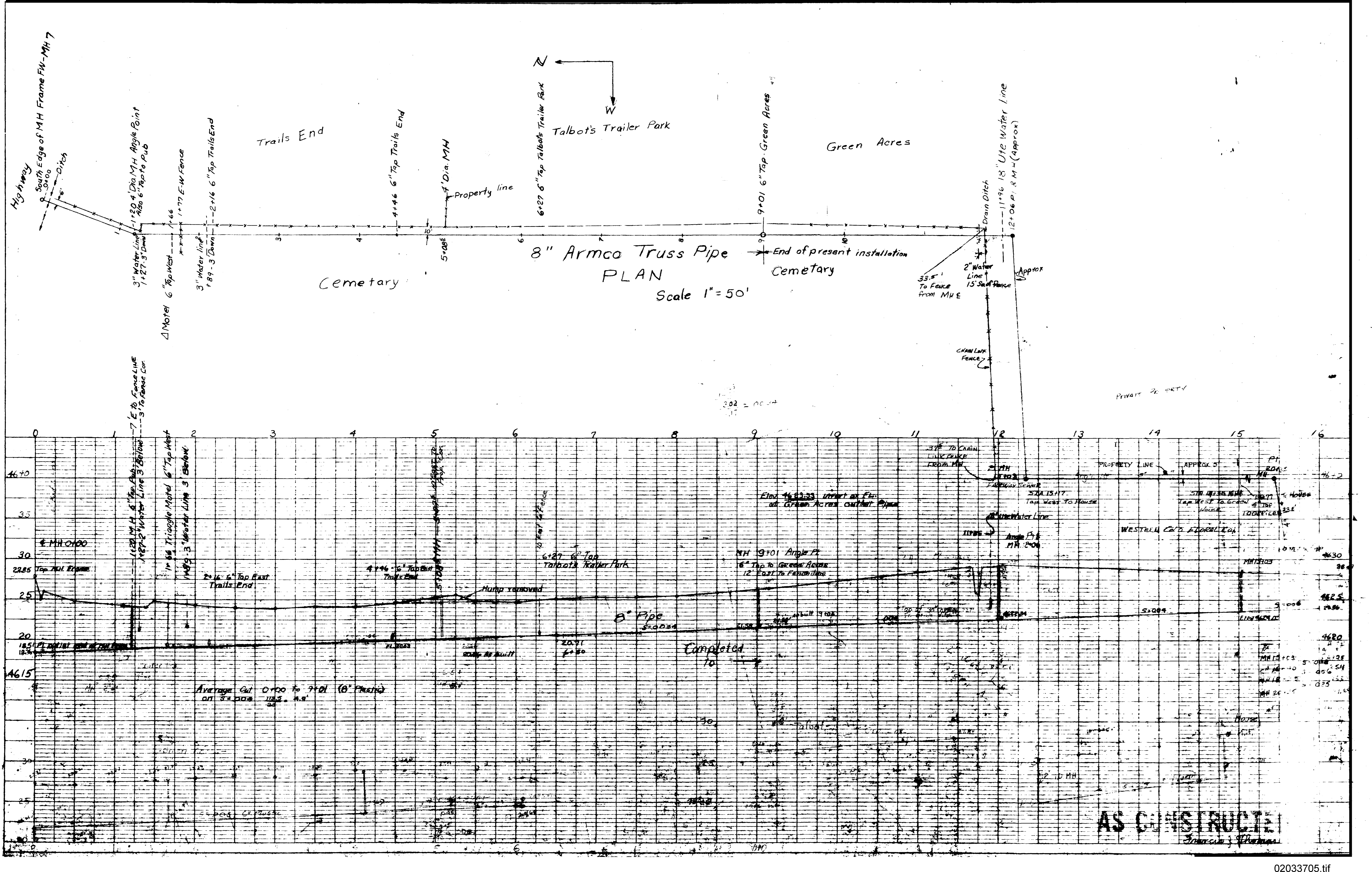


Scale Horizontal 1 = 50  
Scale Vertical 1 = 5









8" Armco Truss Pipe  
 PLAN  
 Scale 1" = 50'

Trails End

Talbot's Trailer Park

Green Acres

Cemetery

End of present installation  
 Cemetery

Highway  
 South Edge of MH Frame FW-MH 7

1+20.4 Dia. MH Angle Point  
 Also 6" Tap to Pub

3" Water Line  
 1+27.3 Down

1+77 E-W Fence

3" Water line  
 +89 - 3 Down

4+46 6" Tap Trails End

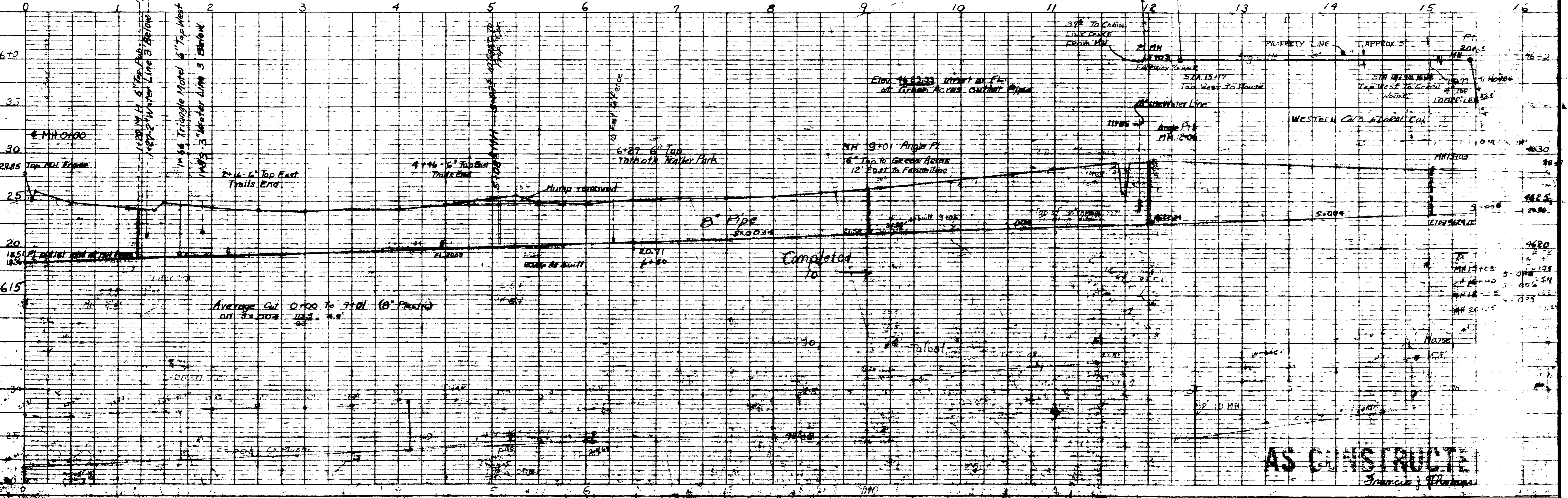
5+08E 4" Dia. MH

Property line

8" Armco Truss Pipe

9+01 6" Tap Green Acres

12+06 P. 8 M.H. (Approx)



Average Cut 0+00 to 9+01 (8" Pipe)  
 on 3+000 11.3 - 11.8'

Completed to

AS CONSTRUCTED