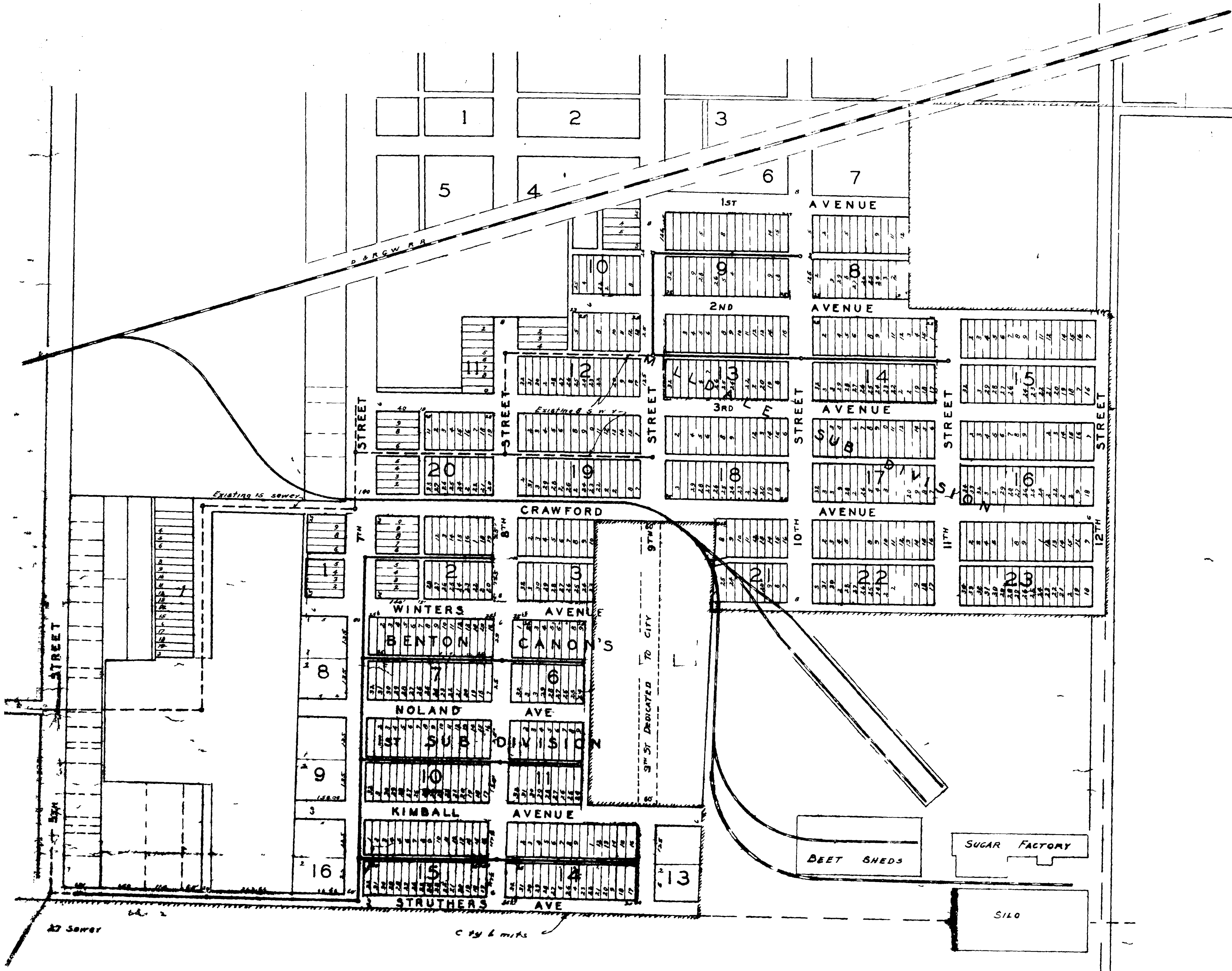


02-344 01

S E W E R   D I S T R I C T   N O   8





SEWER DISTRICT

LEGEND

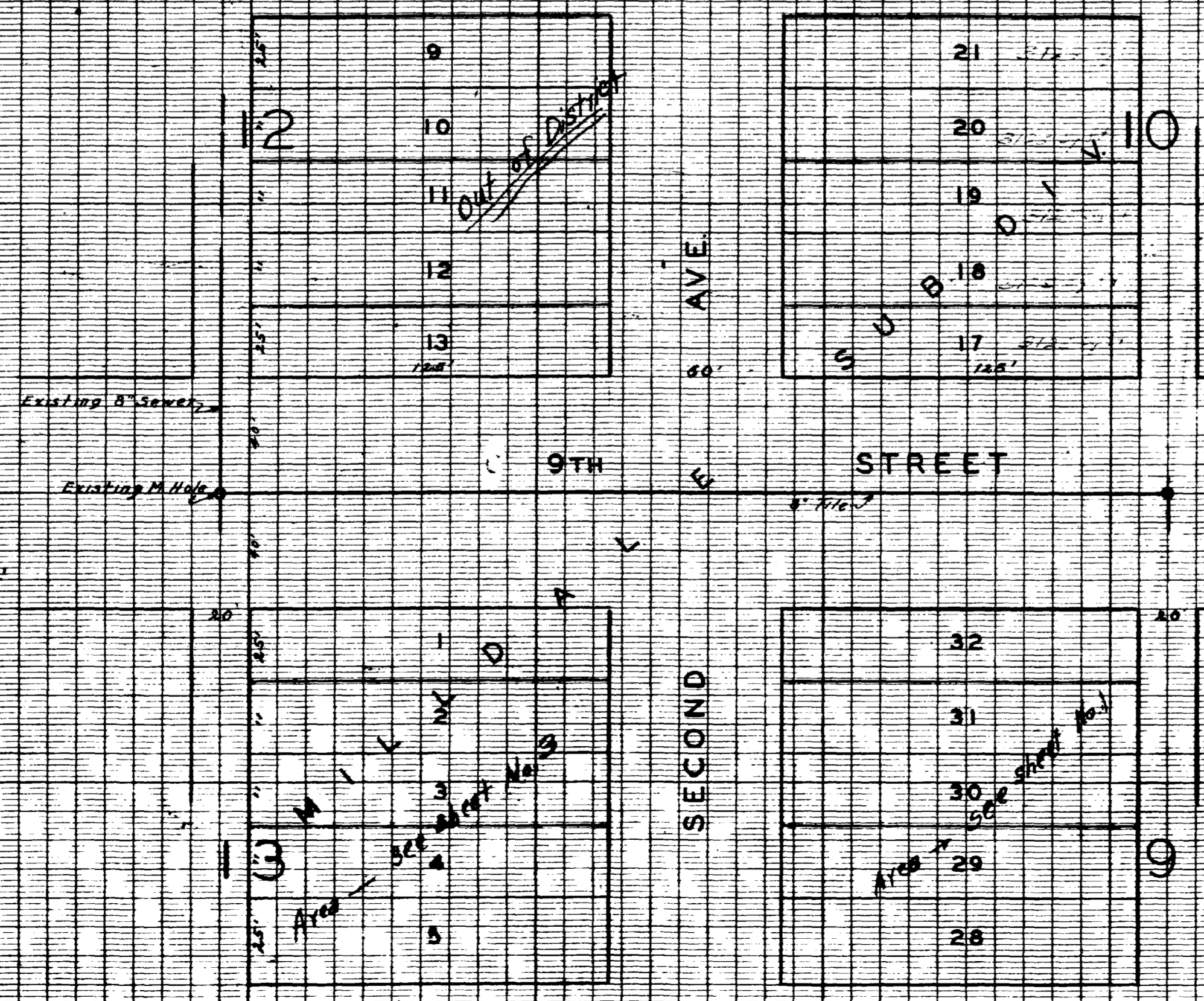
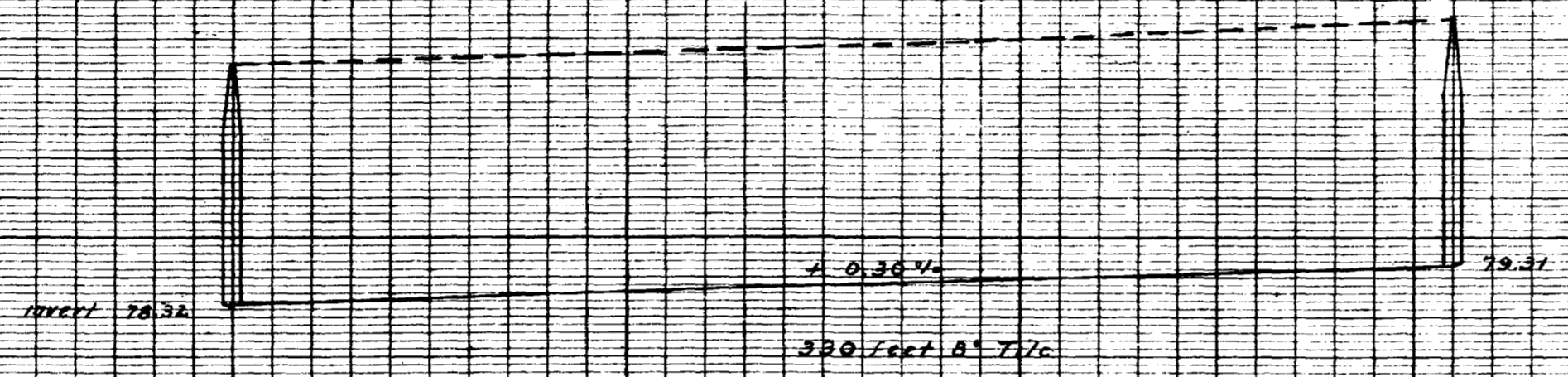
- Man
- Ex s
- P opa

27 Sewer

C 19 6 mts

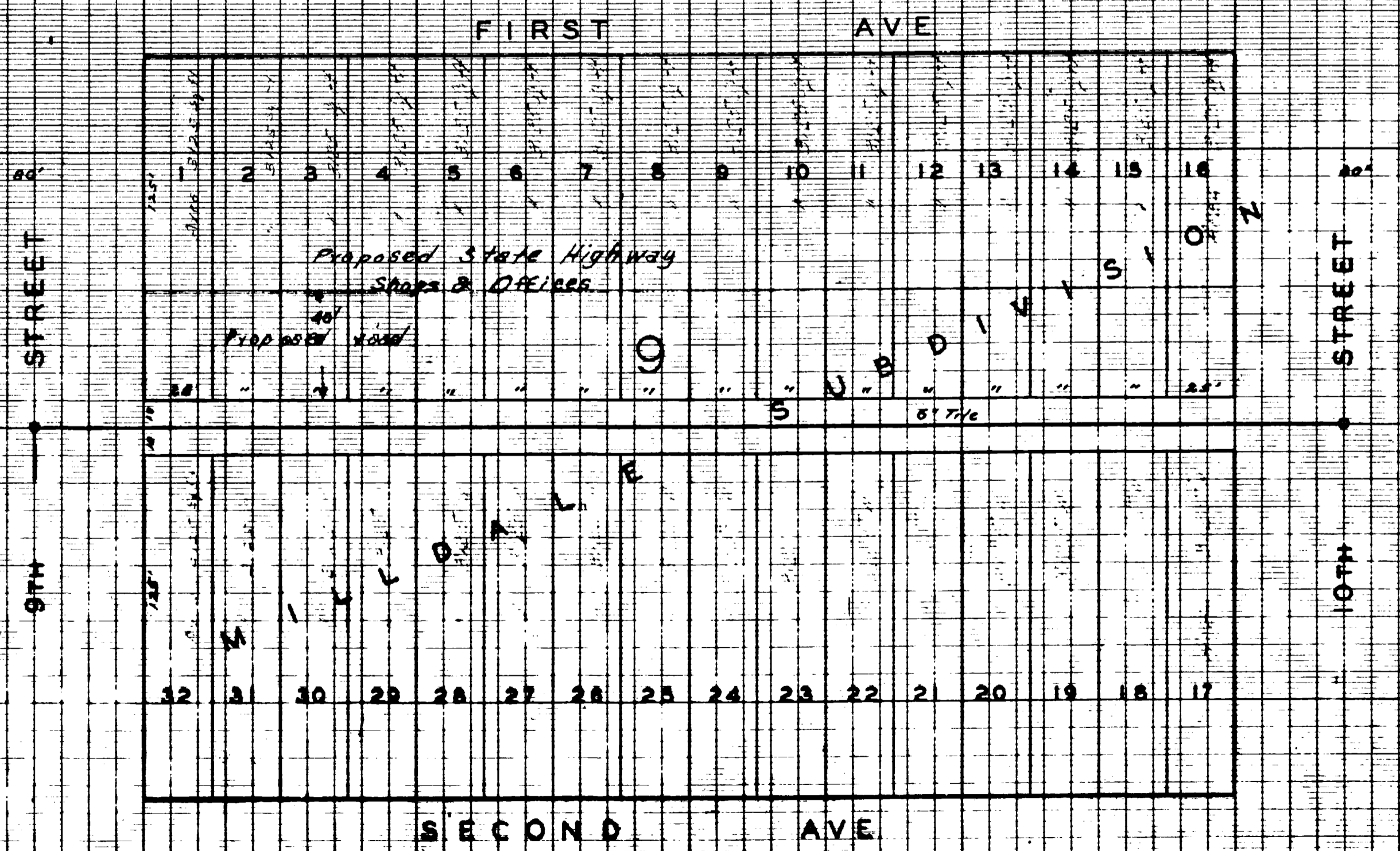
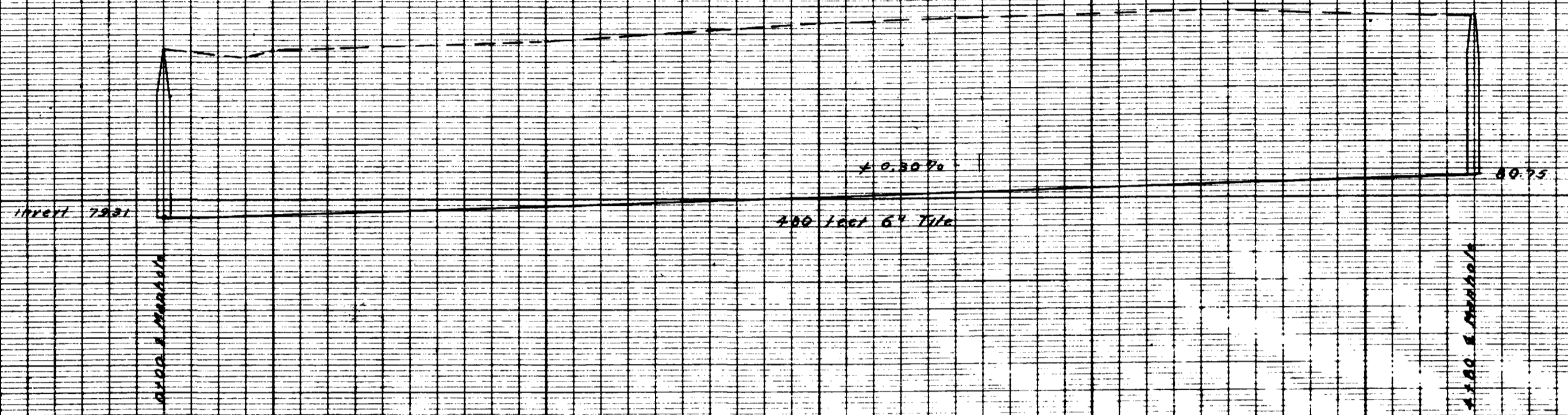


2044-20



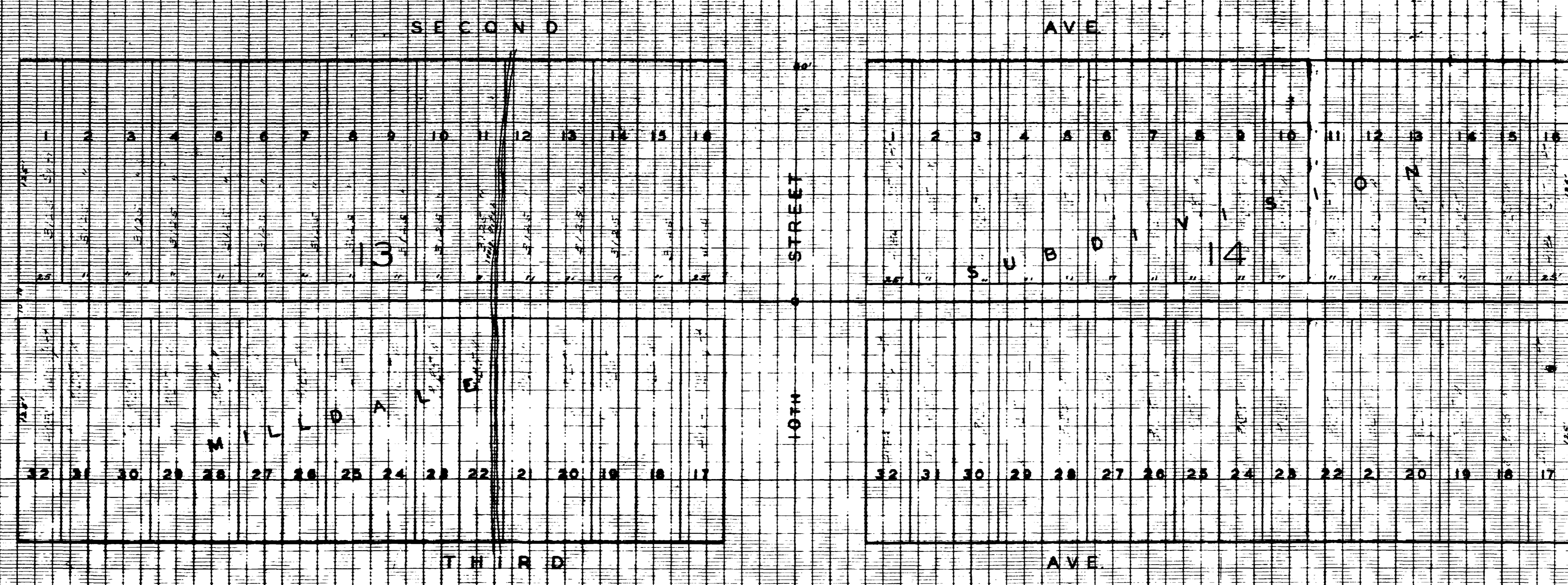
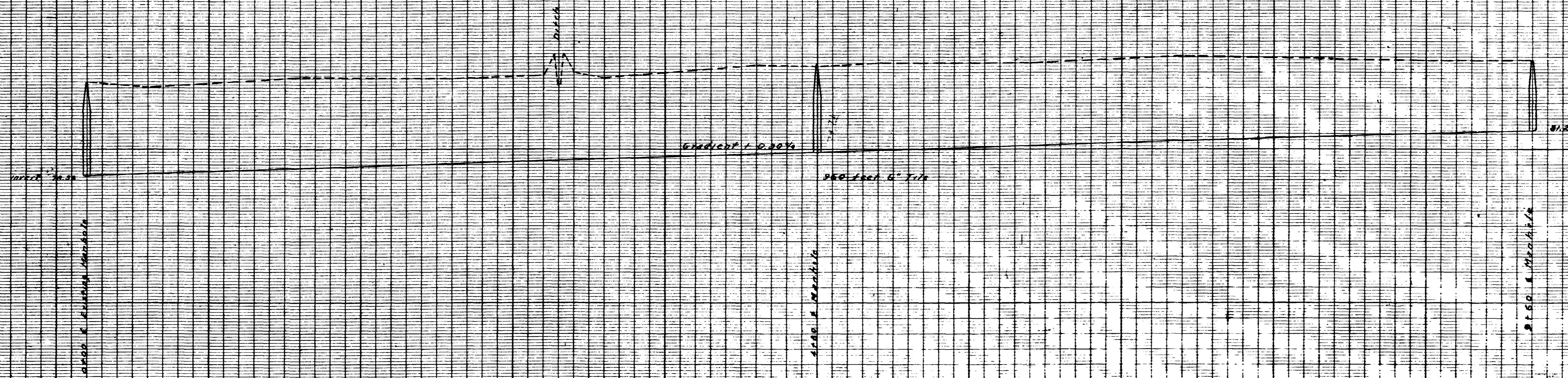
Sheet # 101





Note: Place 1/2" of East of West property line on South side of alley - and 1/2" of East of West property line on North side of alley unless otherwise specified.

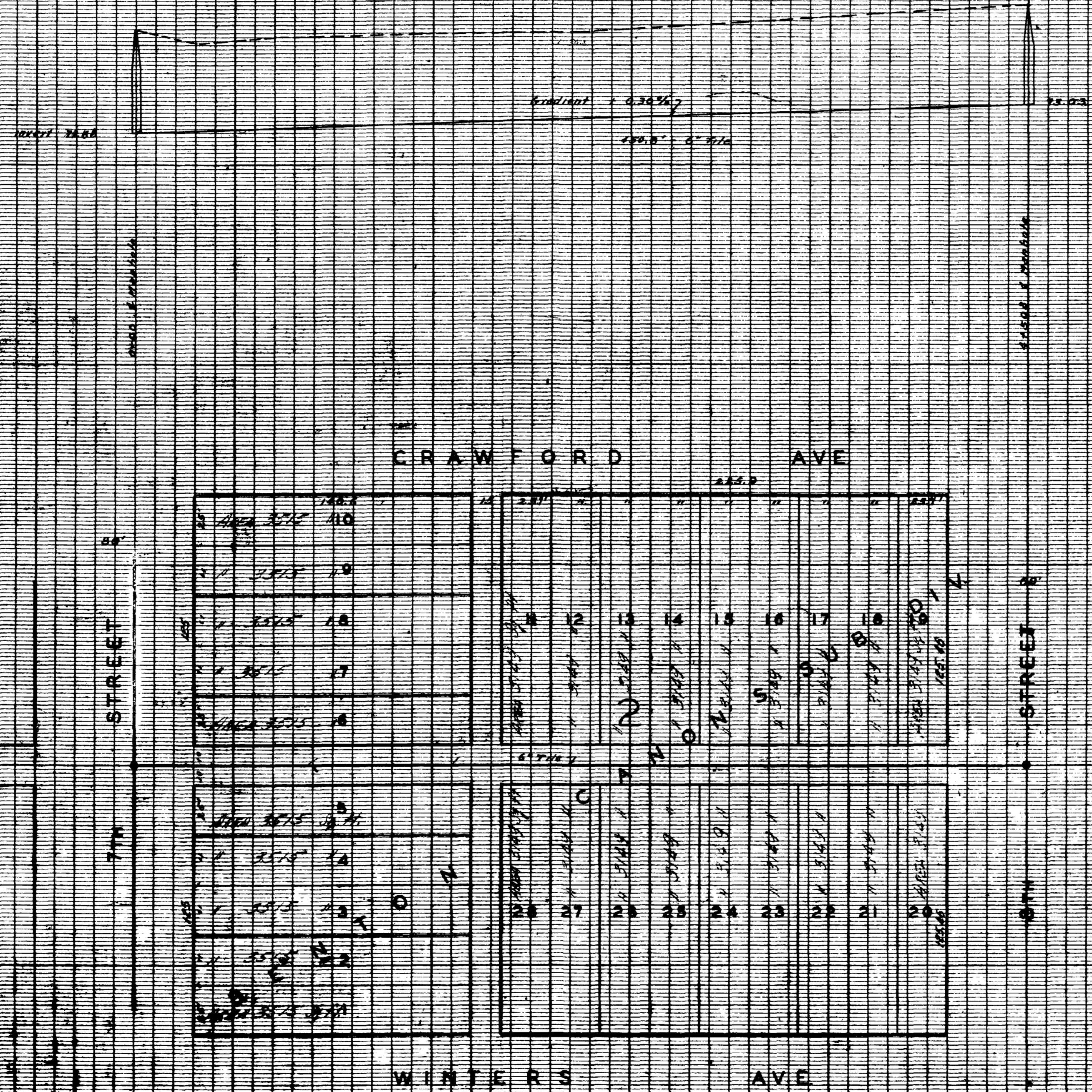




Book # 101 Page # 32



02034406

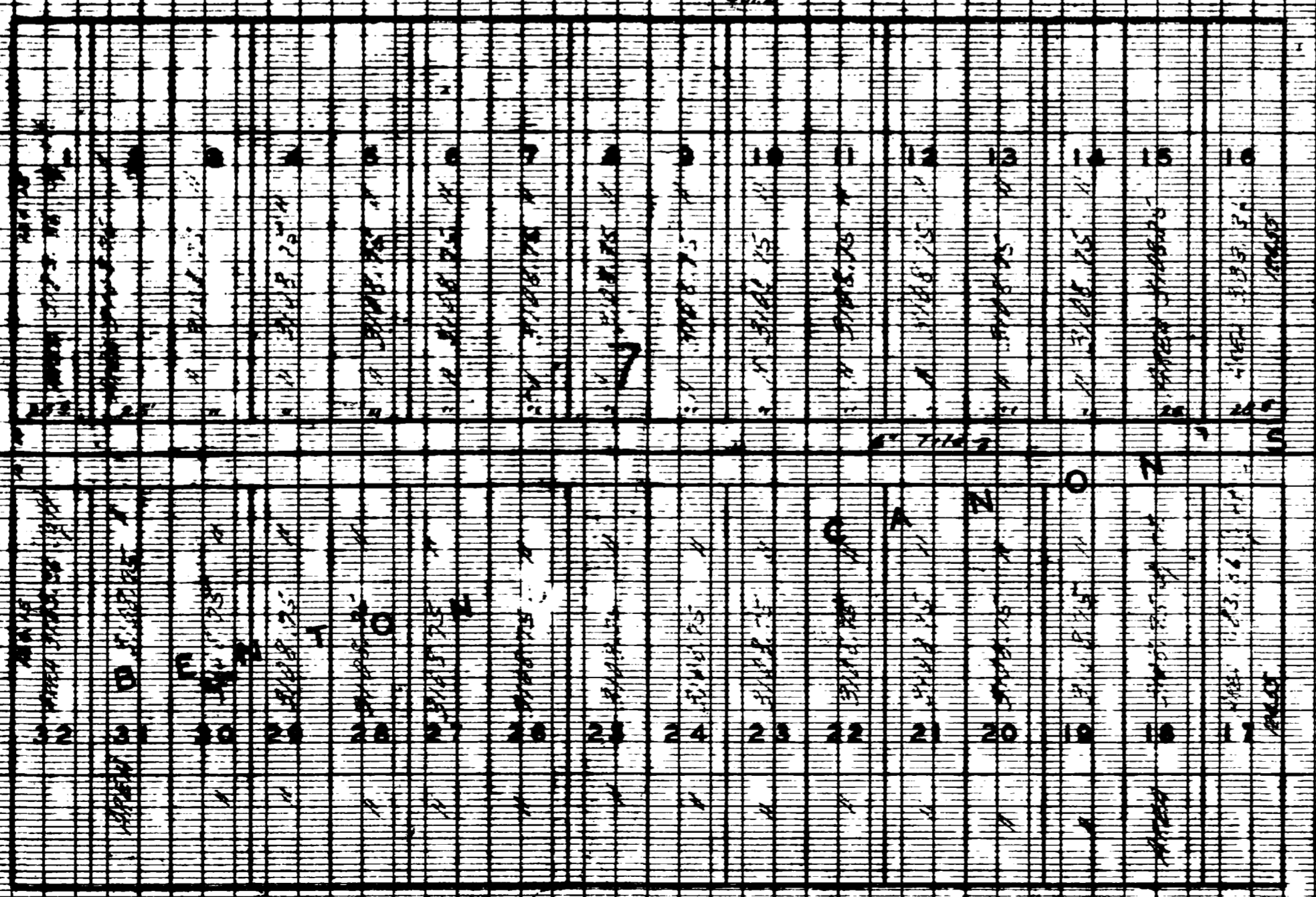


Book # 101 Page # 100



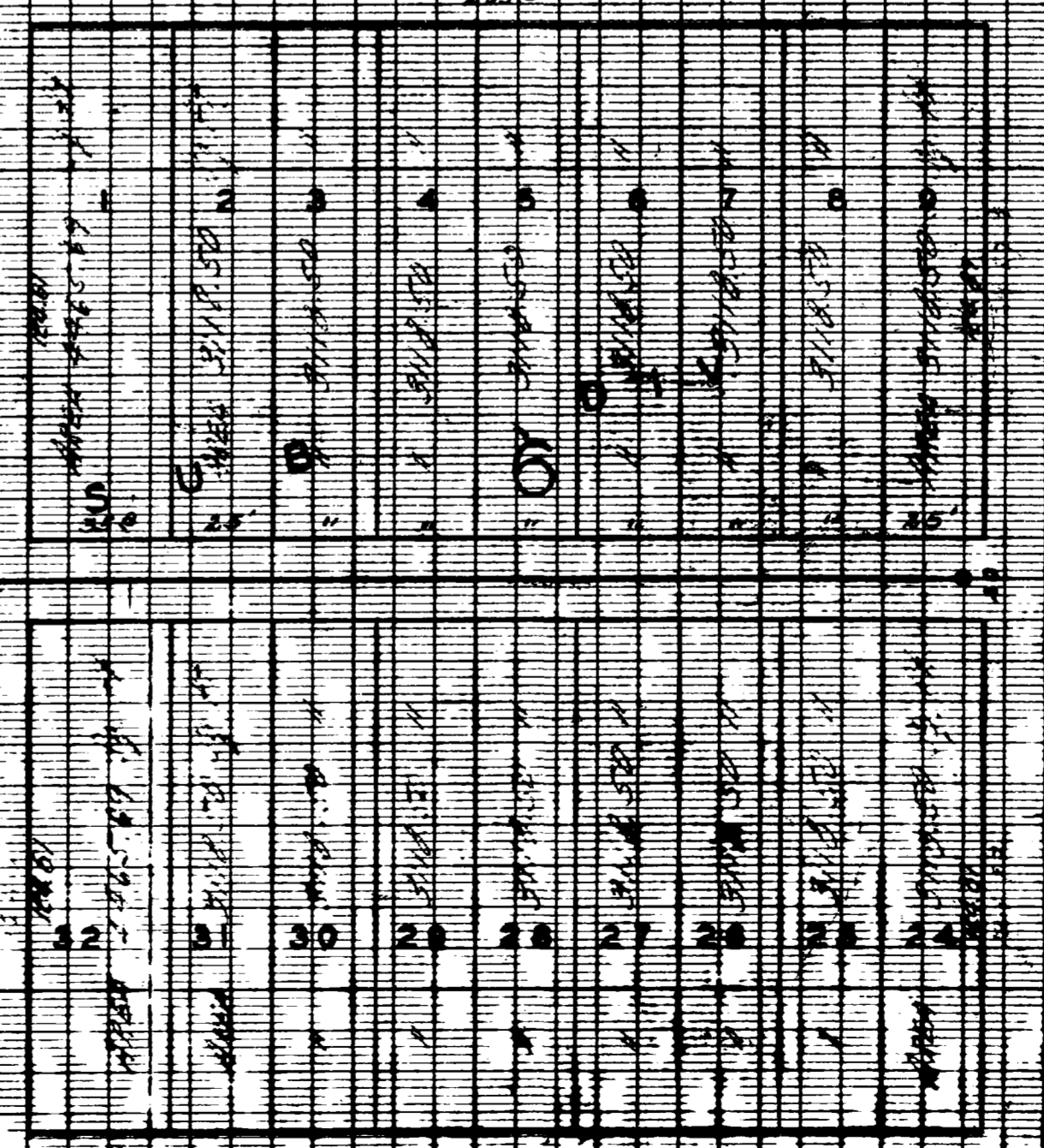


STREET



WINTERS

STREET

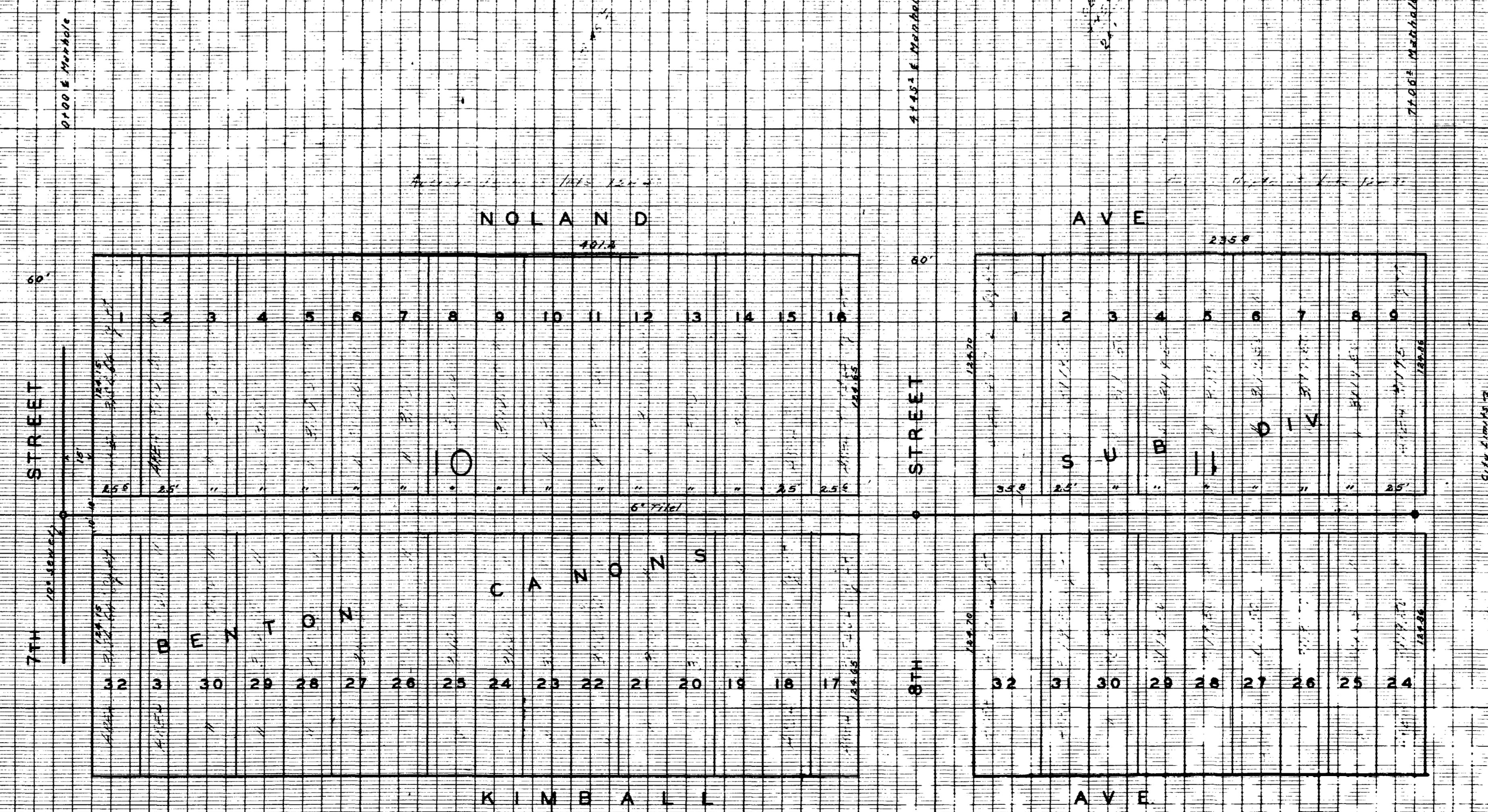
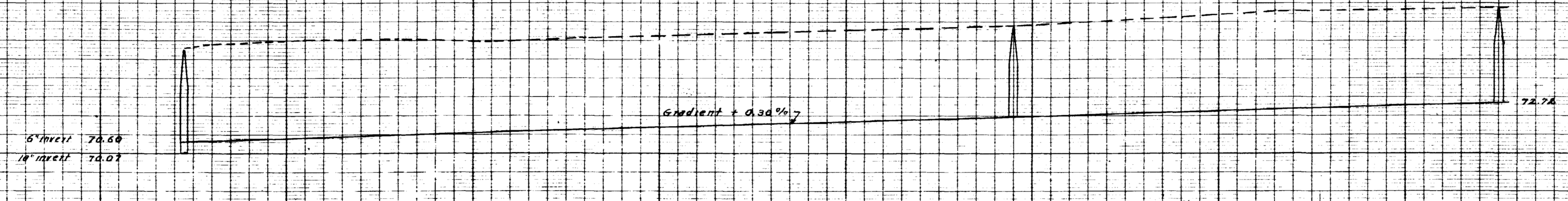


AVE

GRAVEL PAVING Co

Bank of America

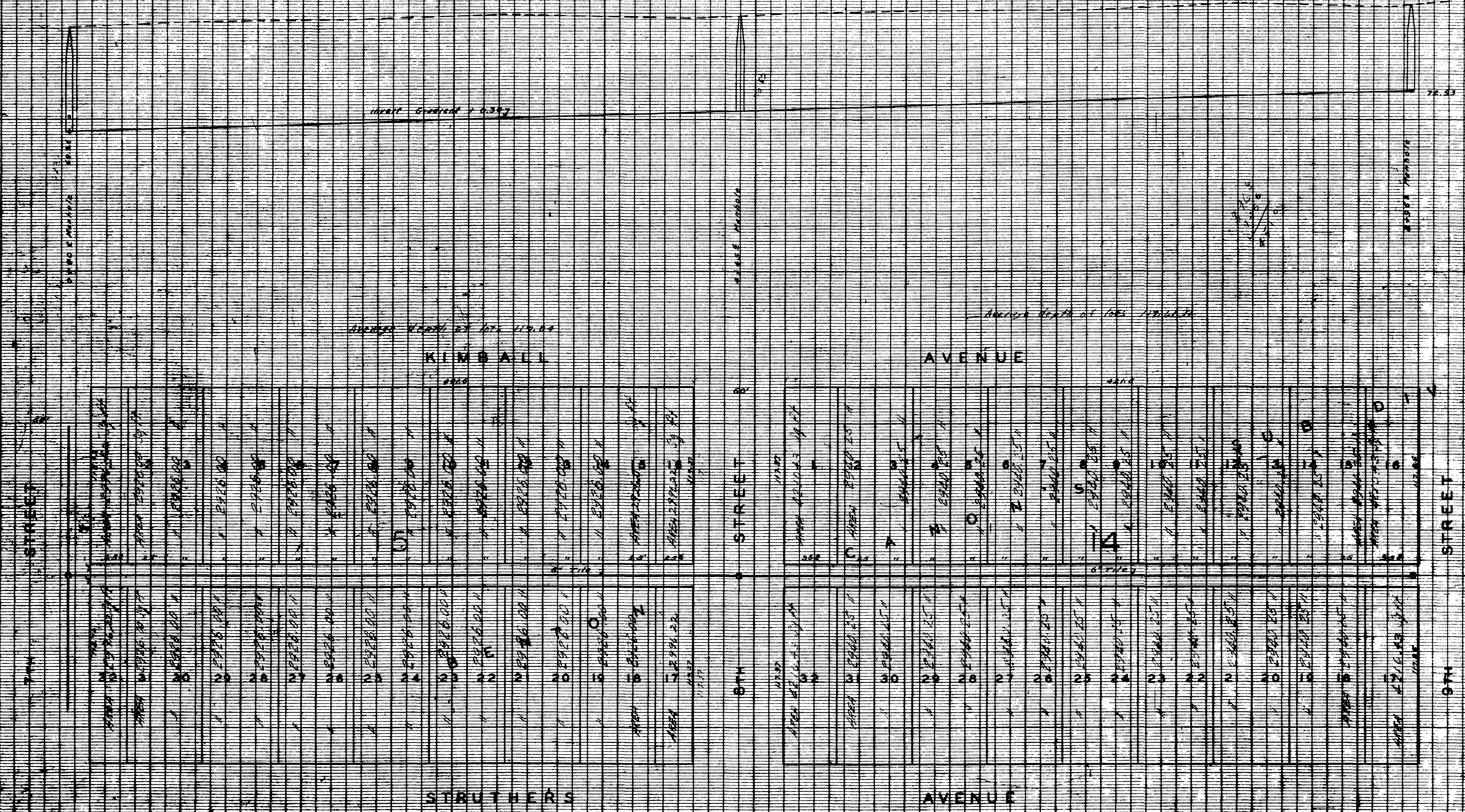




Groher Packing Co

Block 18 Page # 34

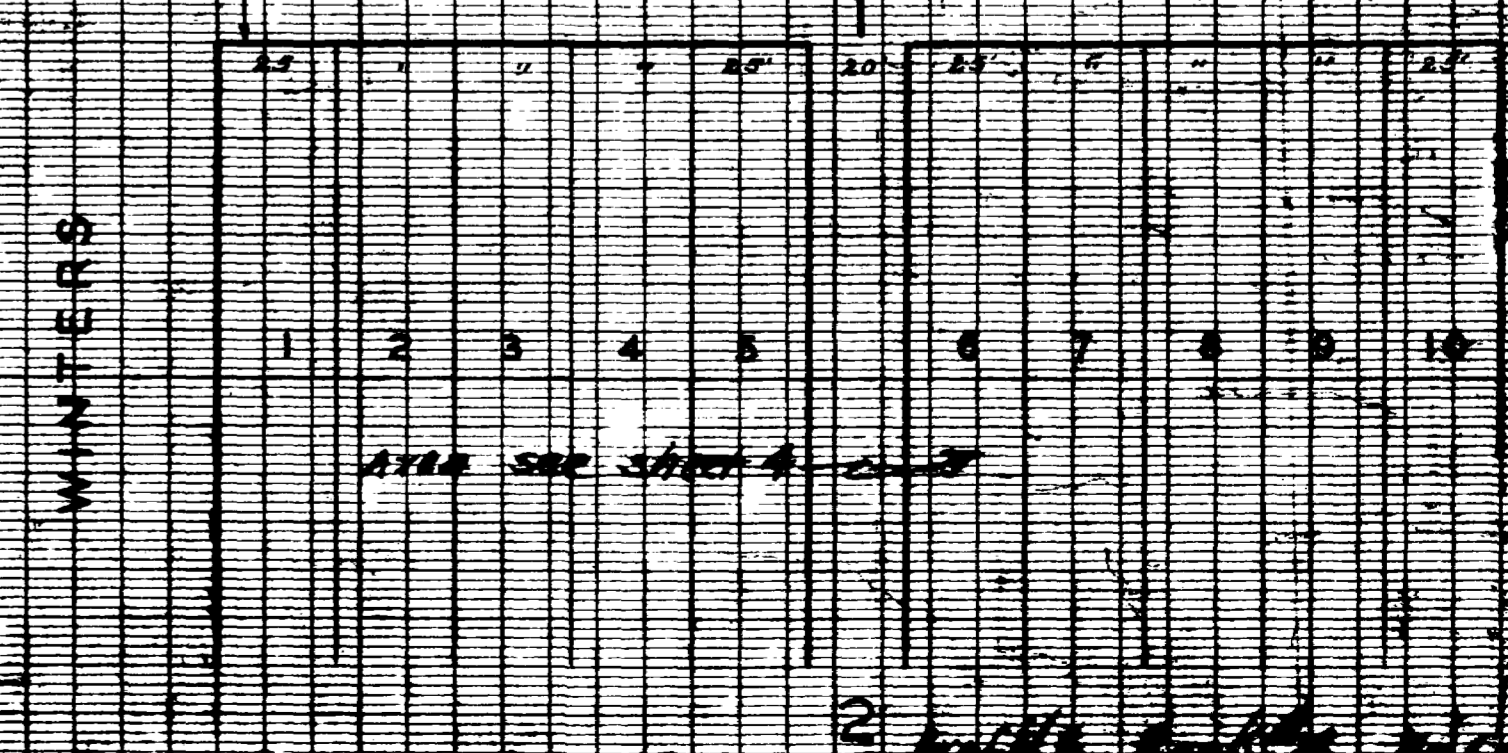
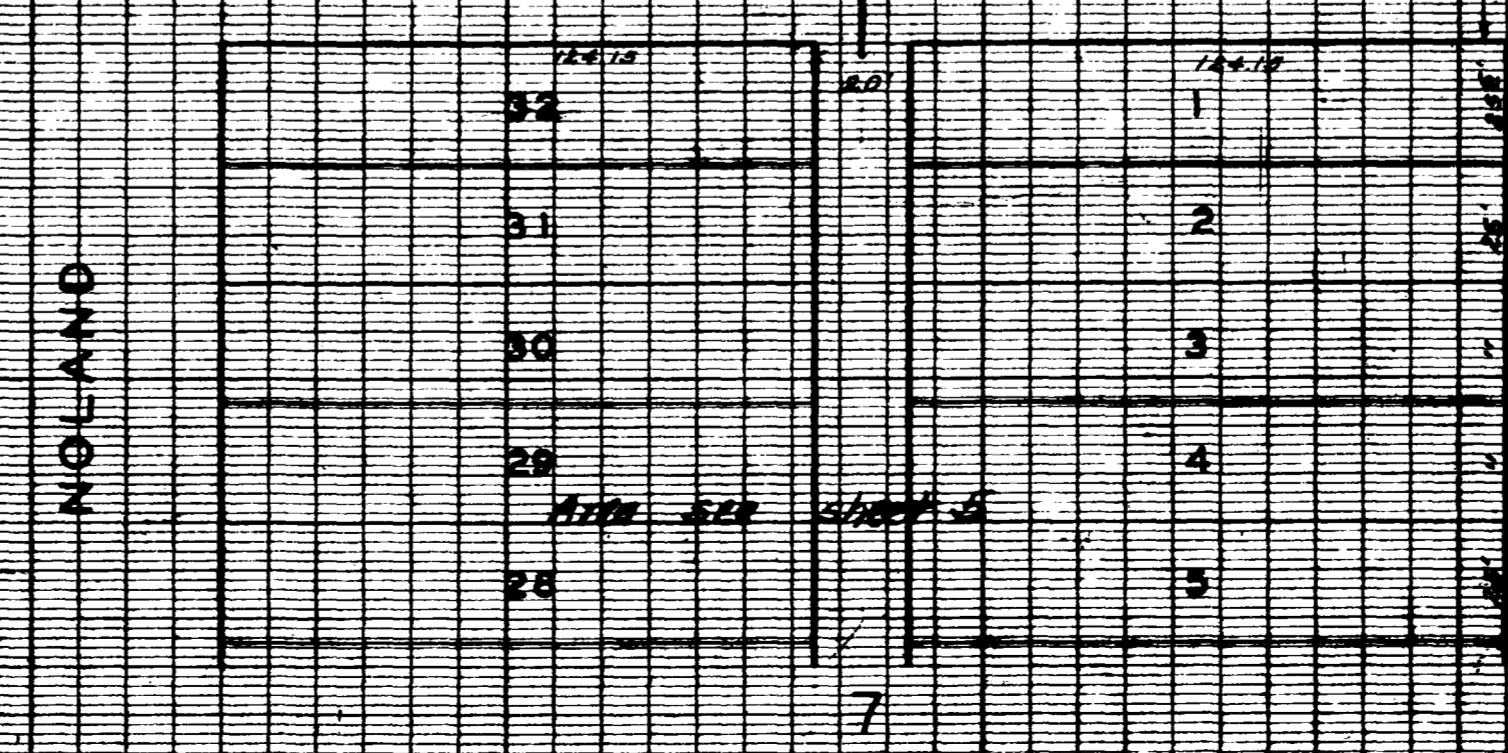
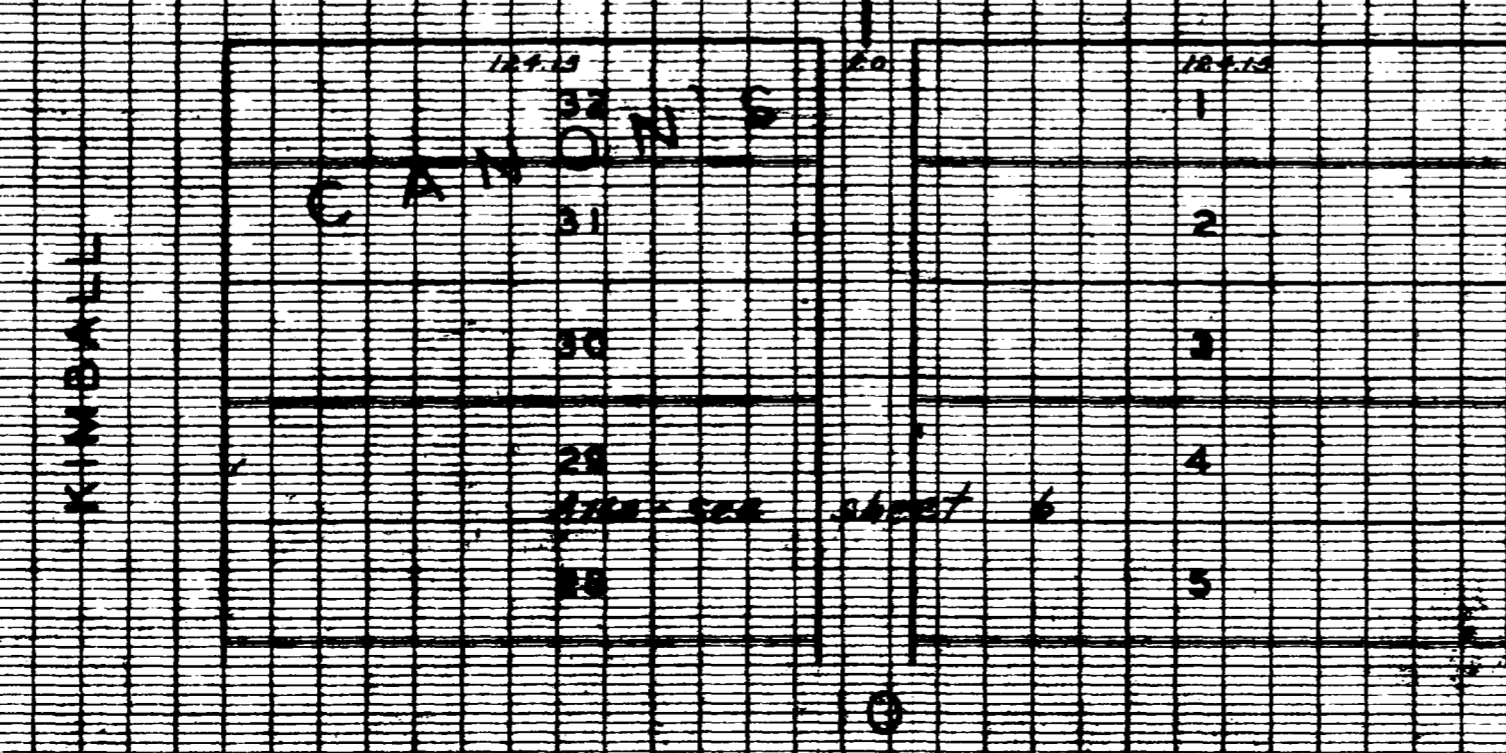
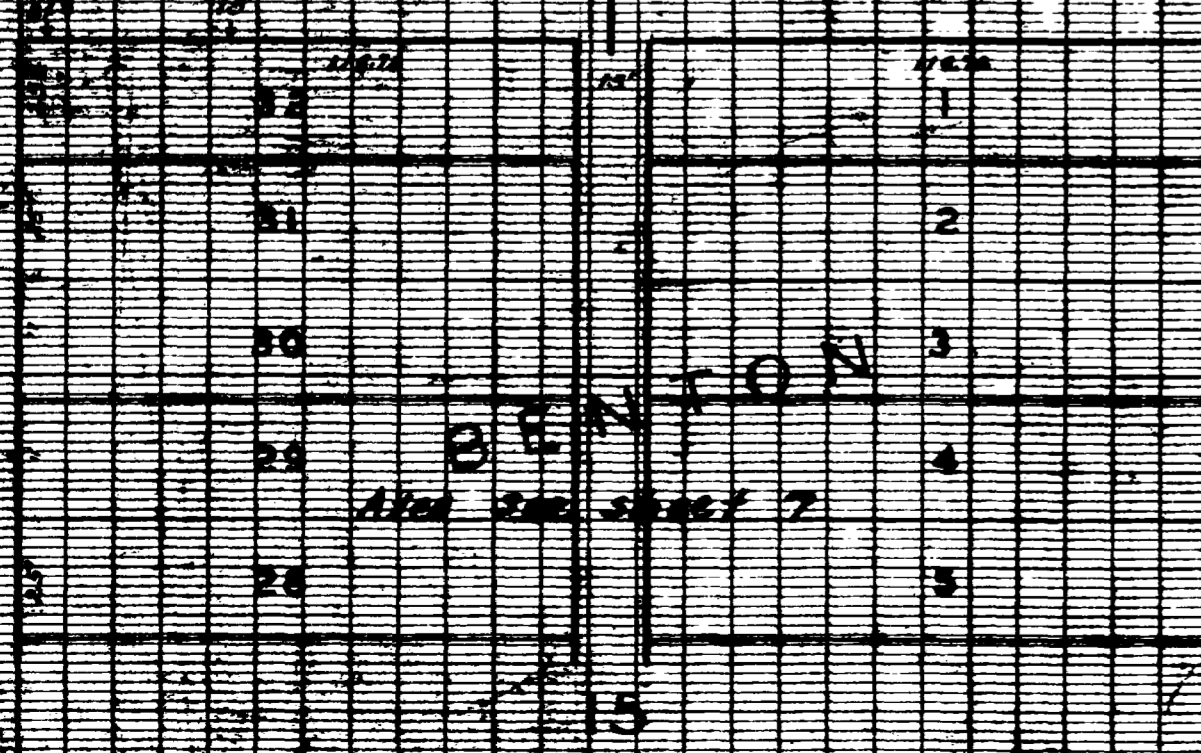
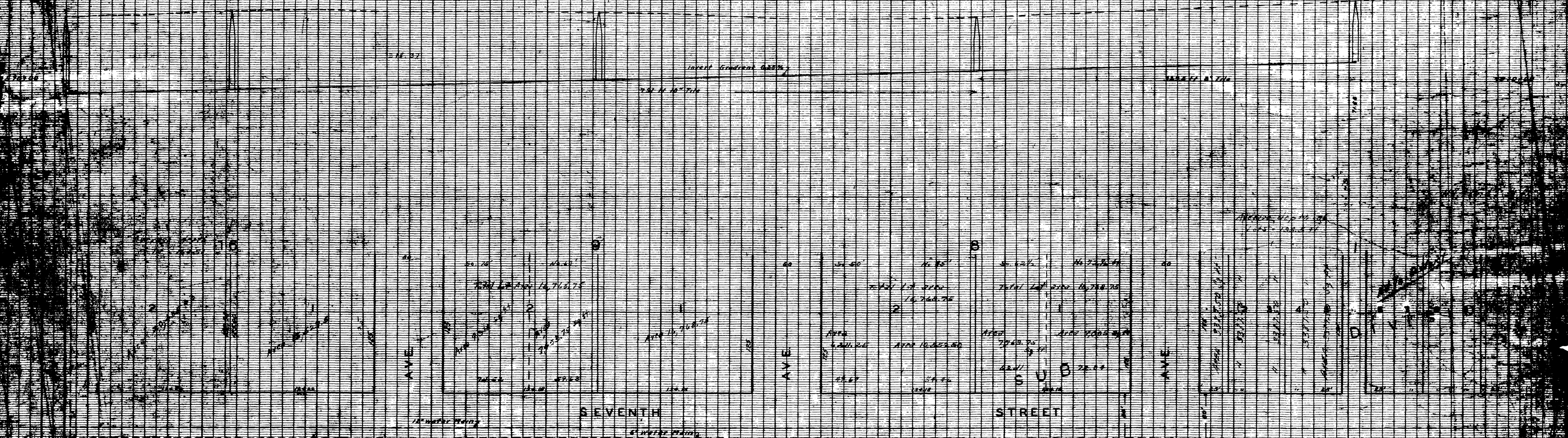




Kimball  
 Profile  
 4-17-18  
 Page 33



82-2446

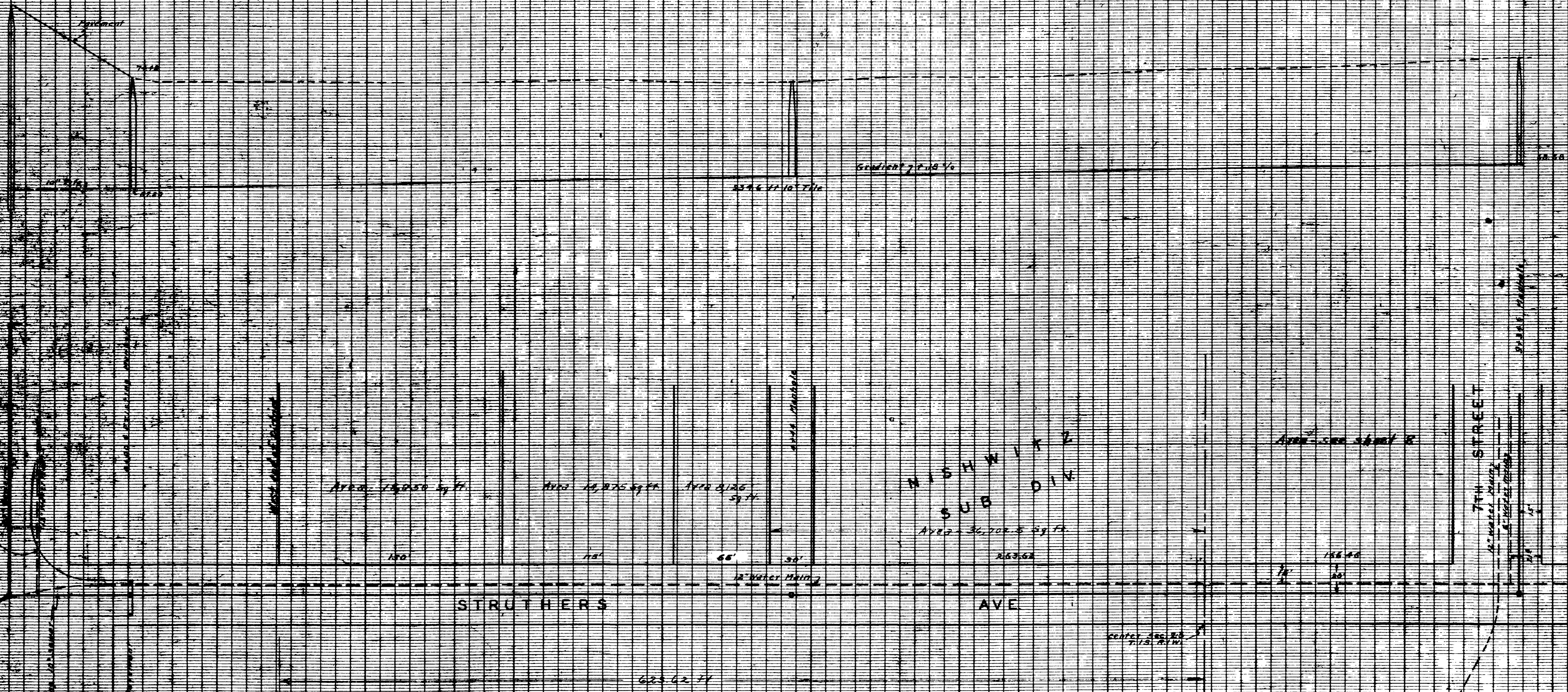


2 with public records

CRAWFORD

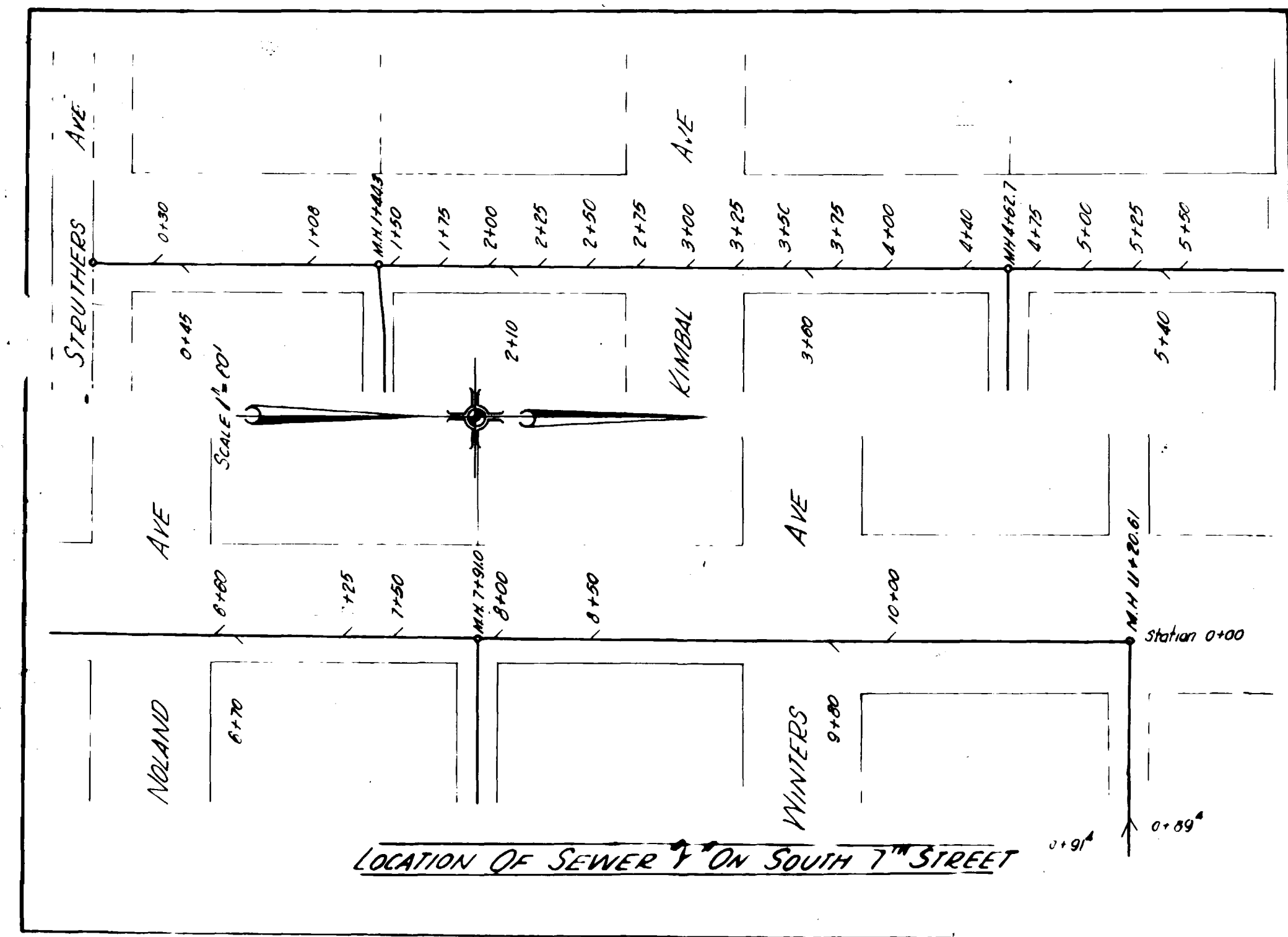
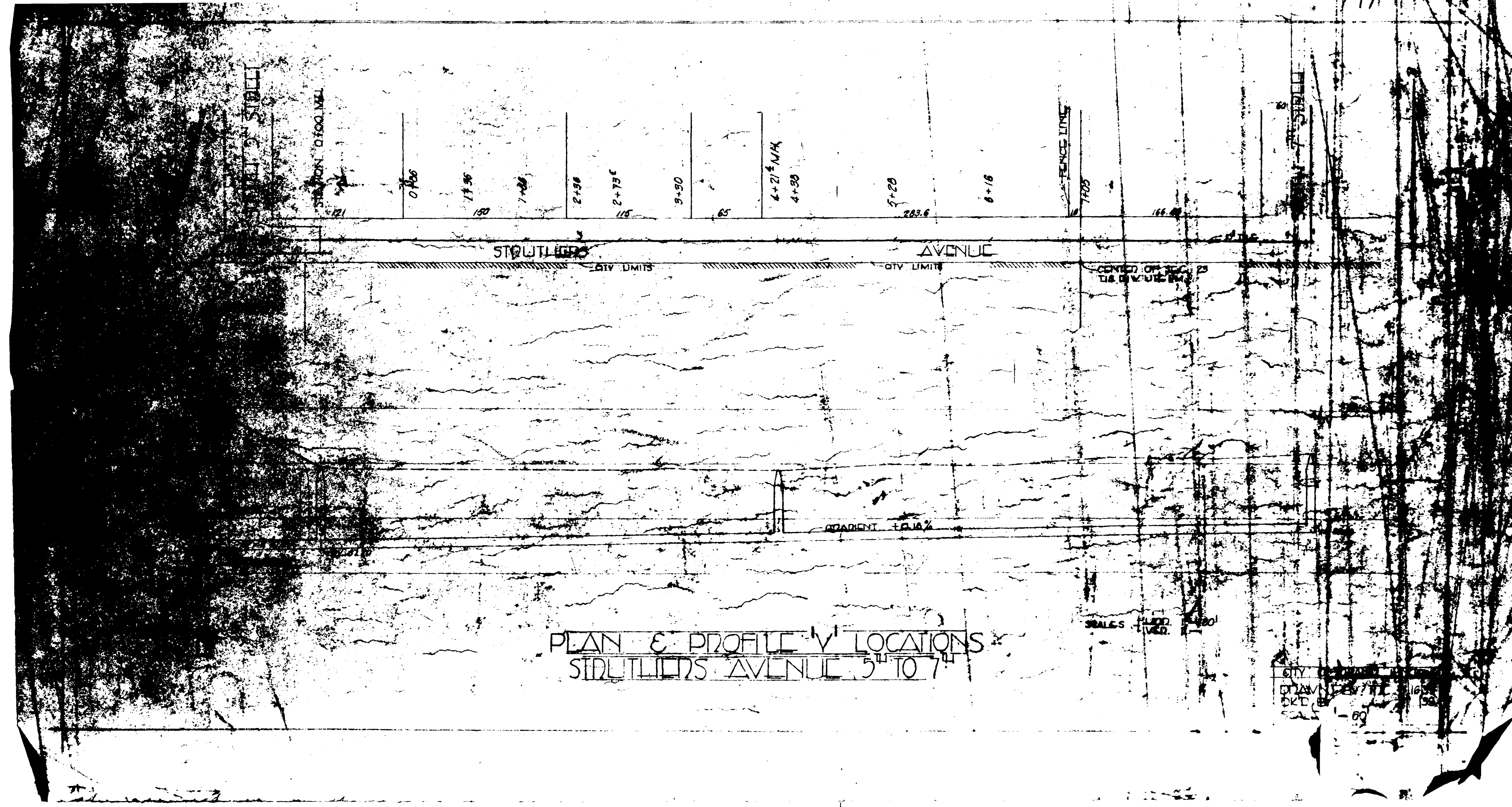


7-2-20



Handwritten notes at the bottom right of the drawing.





02034412.tif

Note: Dark original, best scan possible, please see original for better detail



SOUTH TRUNK LINE AND LATERALS PROPOSED SANITARY SEWER DISTRICT NUMBER 8

