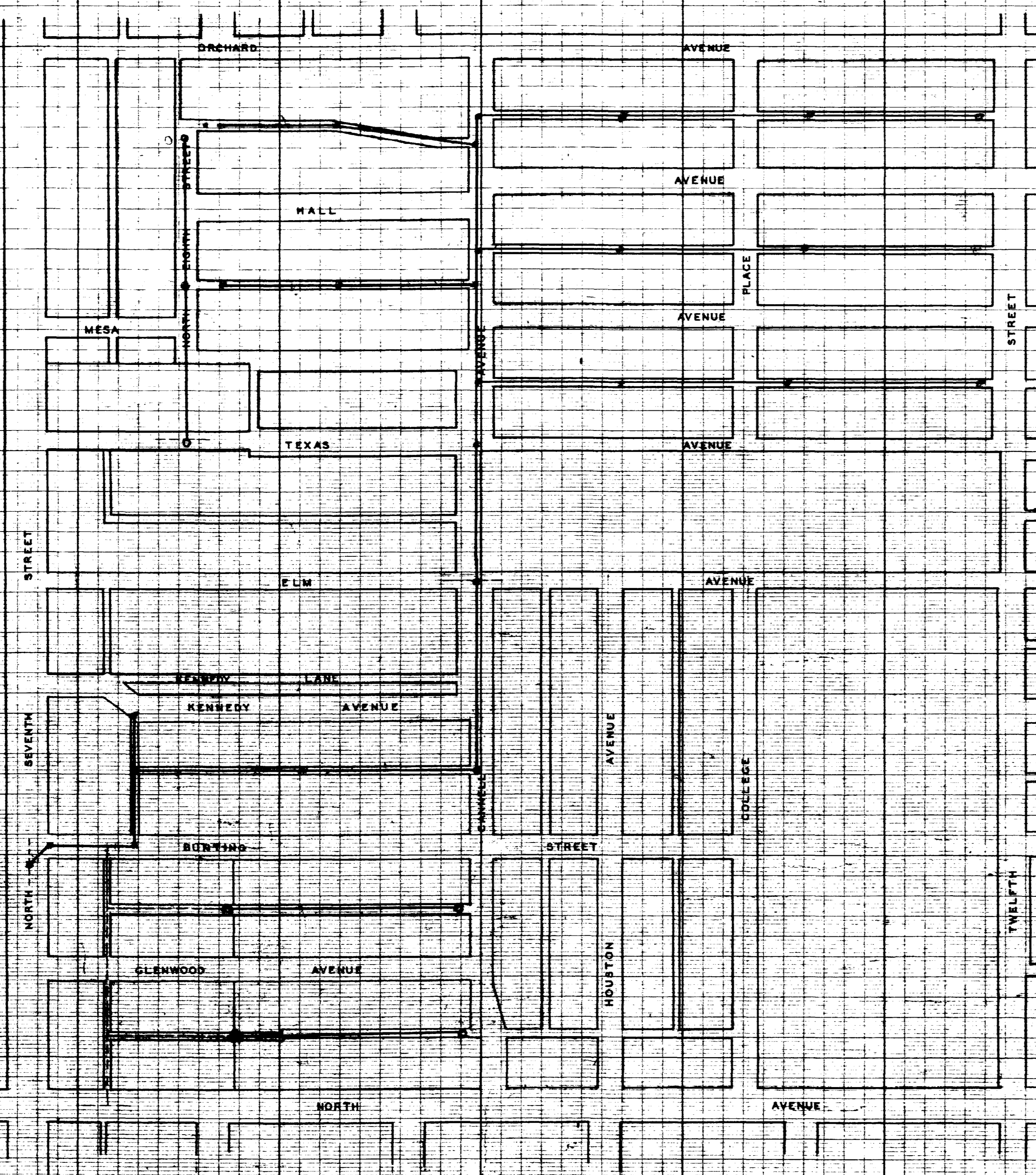


SANITARY SEWER DISTRICT NO 9

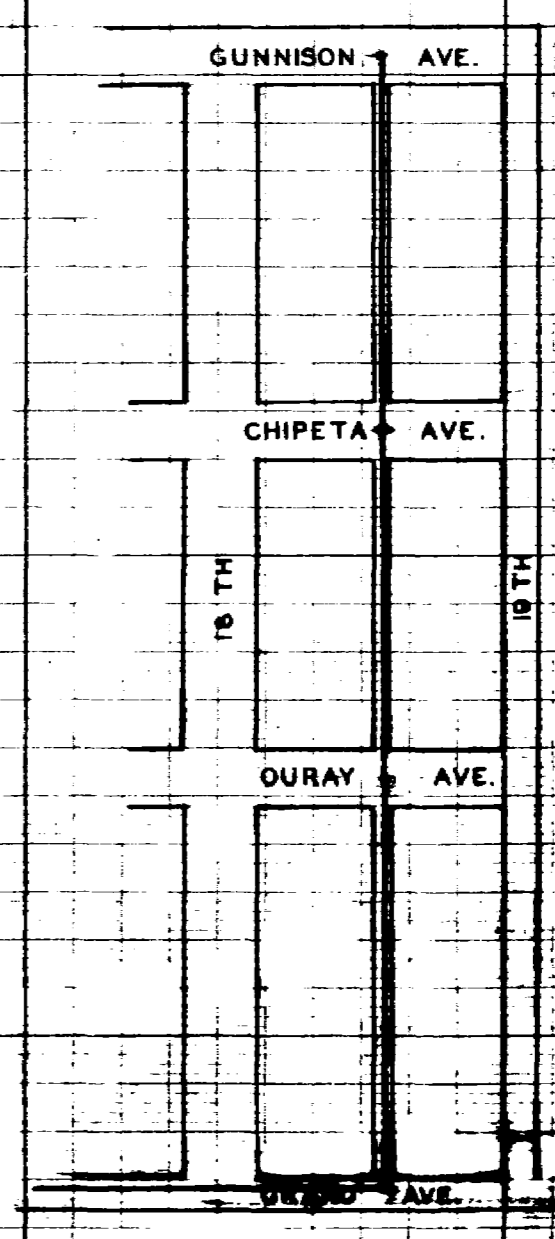
GRAND JUNCTION, COLO.



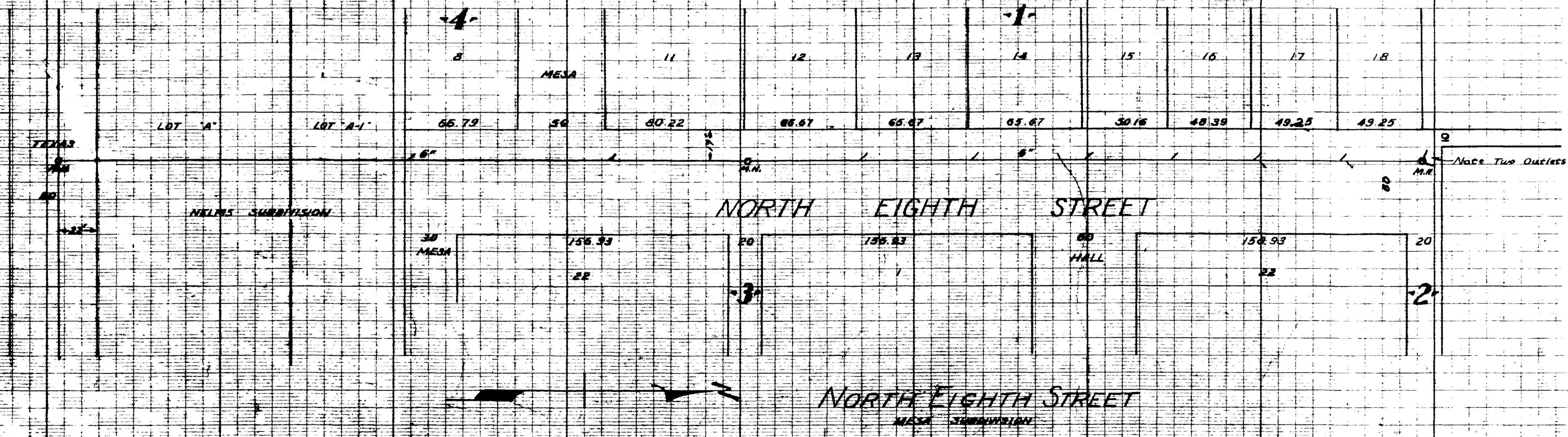
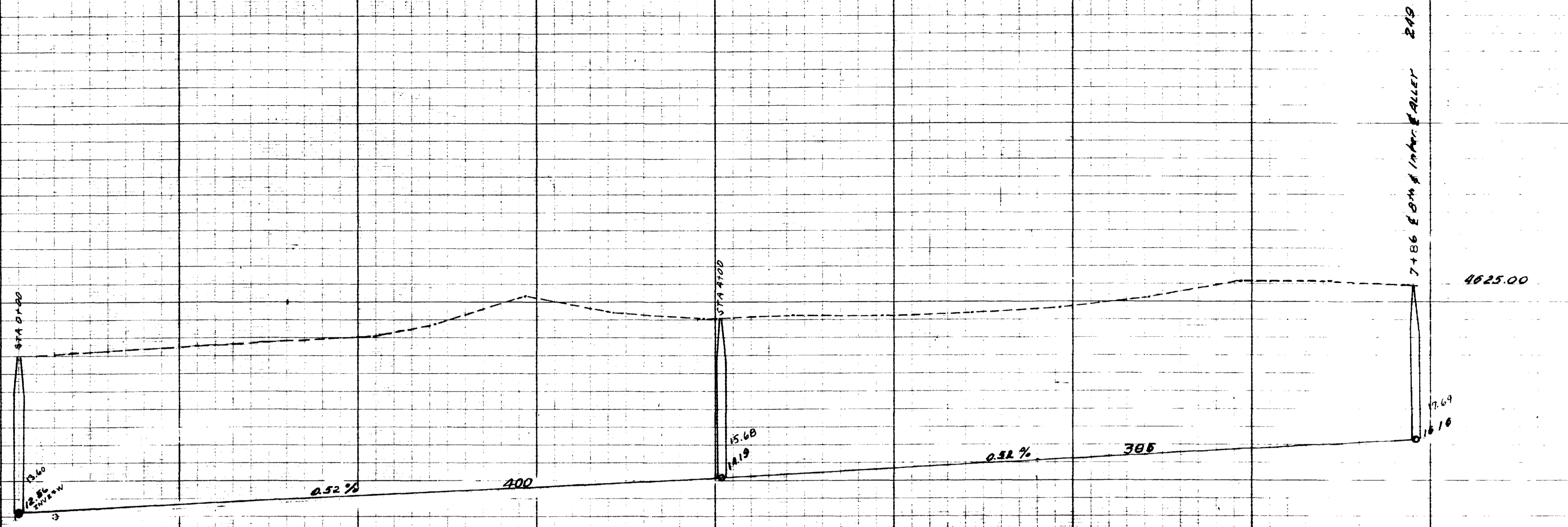
- I.N.D.E.X. —
- SHEET NO. 1 NORTH EIGHTH BETWEEN MESA & ORCHARD AVENUES
 - " 2 ALLEY BETWEEN GLENWOOD & BUNTING, CANNELL E. TO NORTH SEWER IN CRAIG'S
 - " 3 " BUNTING & KENNEDY, CANNELL TO ALLEY EAST OF 7TH STREET
 - " 4 CANNELL AVENUE - ELM TO ORCHARD
 - " 5 ALLEY BETWEEN MESA & HALL, CANNELL TO EIGHTH
 - " 6 " " " ORCHARD & HALL " " " "
 - " 7 " " " TEXAS & MESA " " TWELFTH
 - " 8 " " " HALL & MESA " " "
 - " 9 " " " ORCHARD & HALL " " "
 - " 10 " " " 18TH & 19TH - GRAND TO GUNNISON
 - " 11 GRAND AVE. FROM ALLEY BETWEEN 17TH & 18TH TO 18TH & 19TH
 - " 12 PORTION OF CANNELL SO. OF ELM, PORTION OF BUNTING FROM 17TH ST. EAST, ALLEY BETWEEN KENNEDY & BUNTING RUNNING NORTH & SOUTH

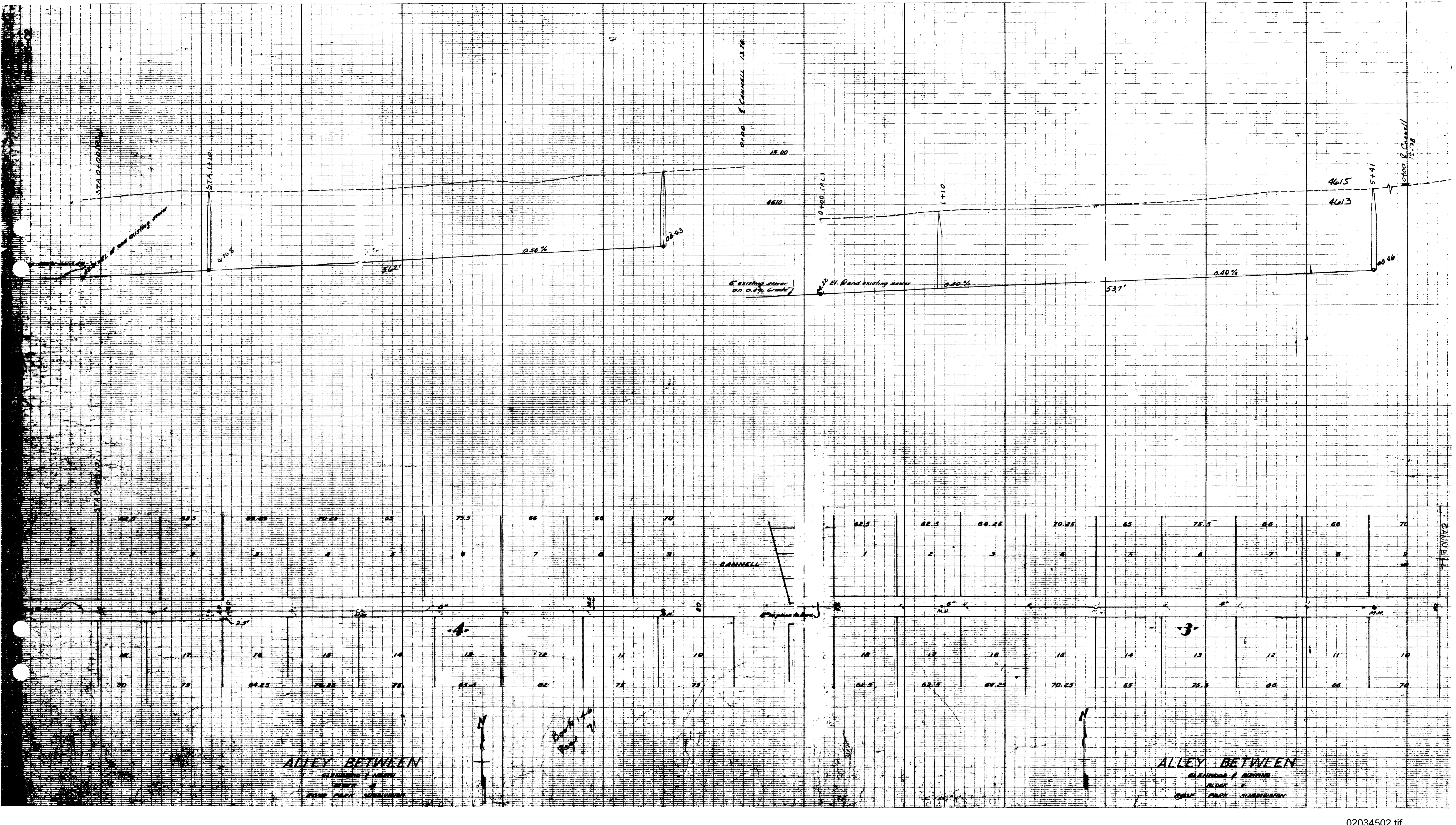
Field Book 146

1997



Sanitary Sewers ——— In Use Constructed in Place to Date. Scale 1 in. = 200 ft.





STA 2126.81

STA 1119

0+00 of Cannell 12.78

0+00 of Cannell 15.78

13.00

4610

0+00 (P.L.)

1+10

4615

5+41

4613

66.66

562'

0.36%

66.03

6" existing sewer on 0.1% grade

El. Bend existing sewer

0.40%

537'

0.40%

69.5	70.5	71.5	72.5	73.5	74.5	75.5	76.5	77.5	78.5	79.5
1	2	3	4	5	6	7	8	9	10	11
70	71	72	73	74	75	76	77	78	79	80
69.5	70.5	71.5	72.5	73.5	74.5	75.5	76.5	77.5	78.5	79.5

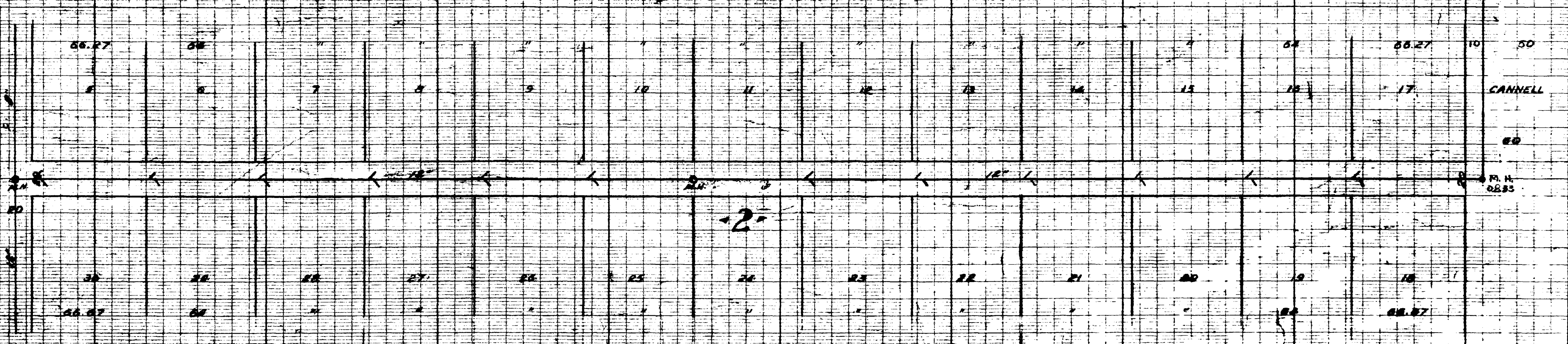
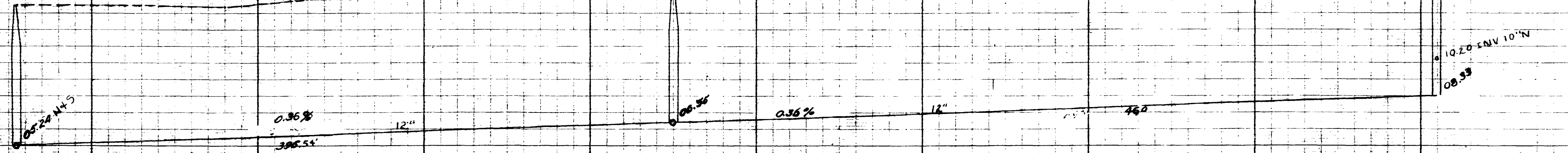
62.5	63.5	64.5	65.5	66.5	67.5	68.5	69.5	70.5
1	2	3	4	5	6	7	8	9
62.5	63.5	64.5	65.5	66.5	67.5	68.5	69.5	70.5

ALLEY BETWEEN
GLENNWOOD & BENTLEY
BLOCK 4
BASE PARK SUBDIVISION

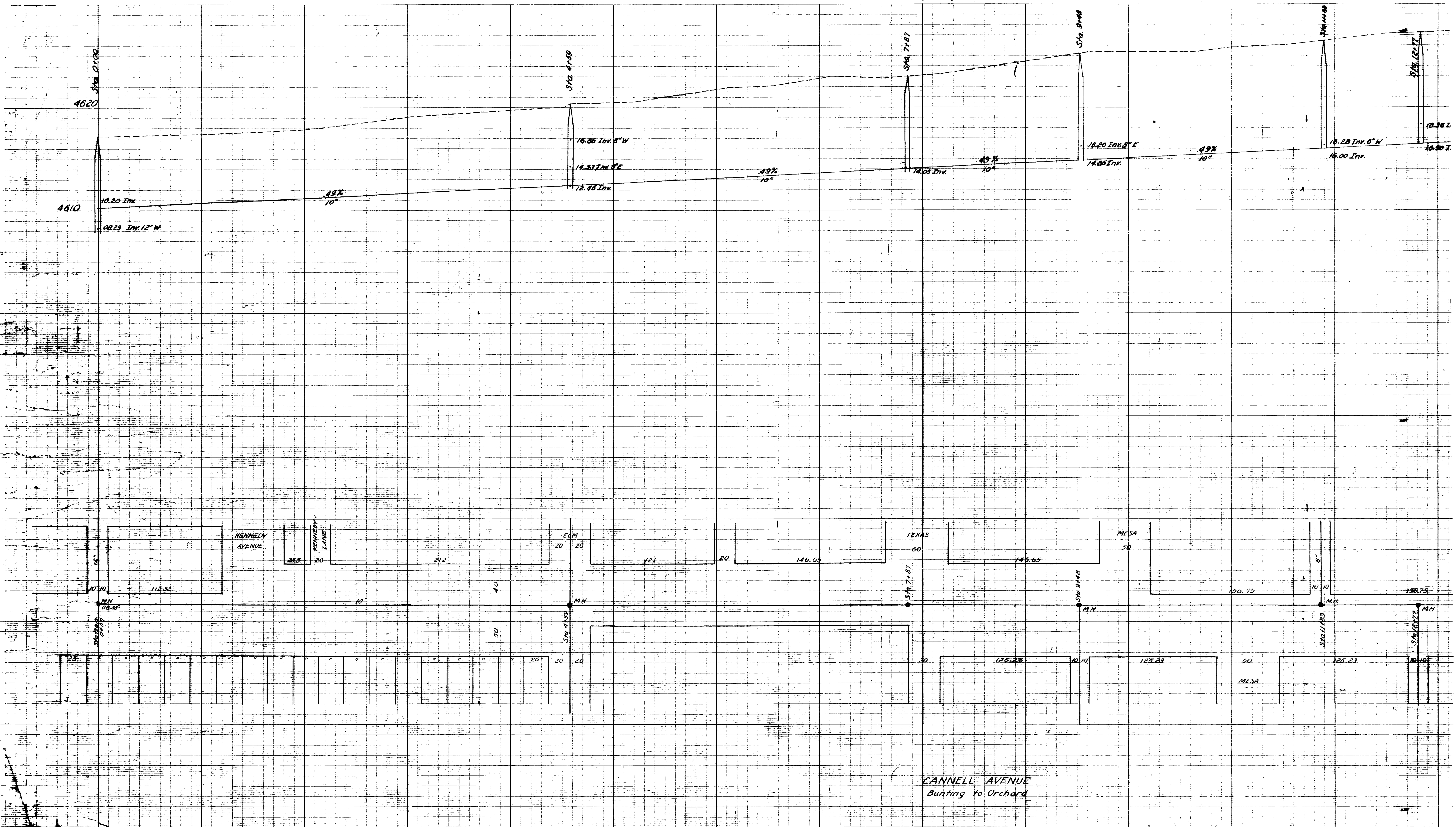
ALLEY BETWEEN
GLENNWOOD & BENTLEY
BLOCK 3
BASE PARK SUBDIVISION

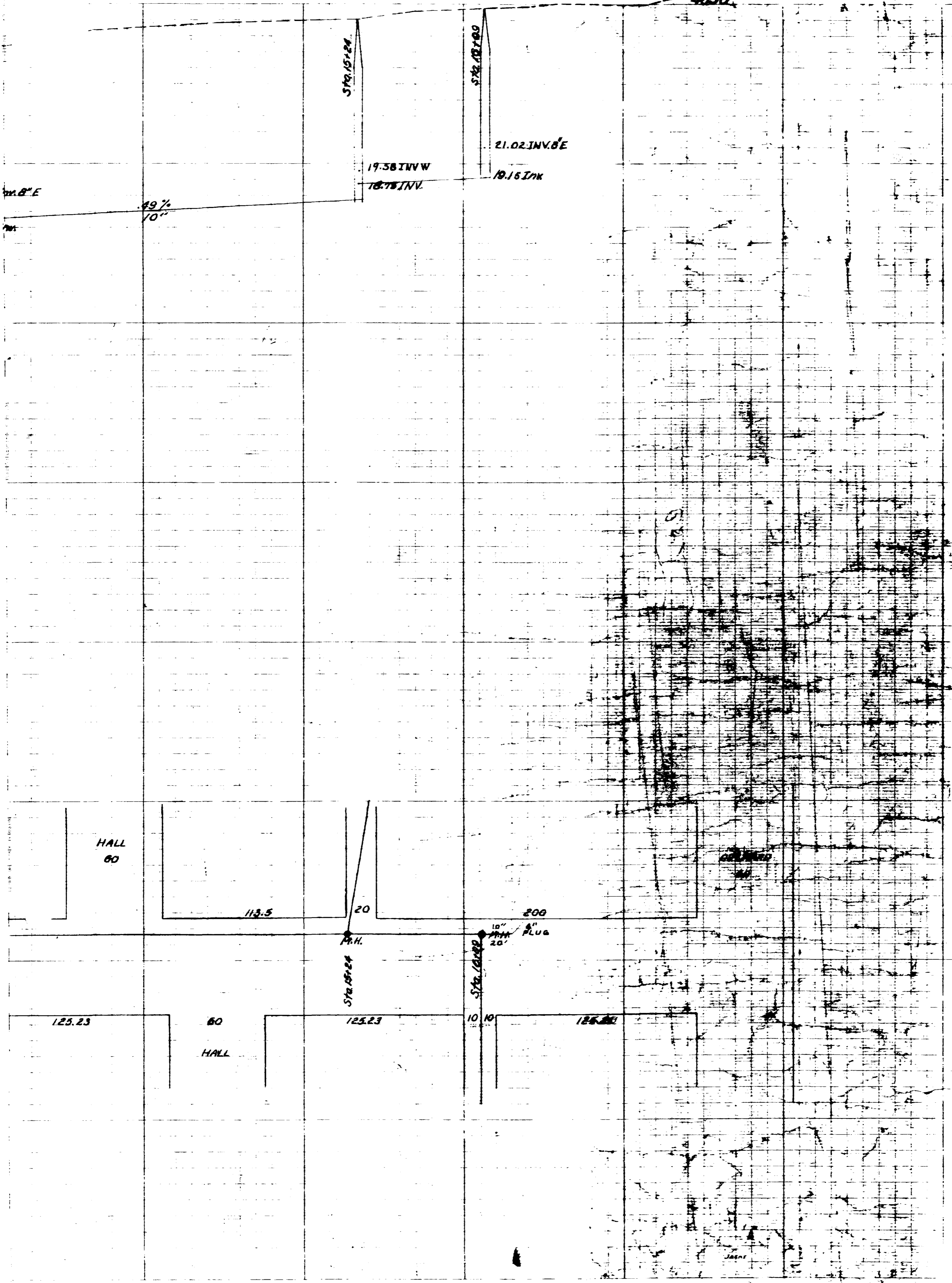
02-09-05

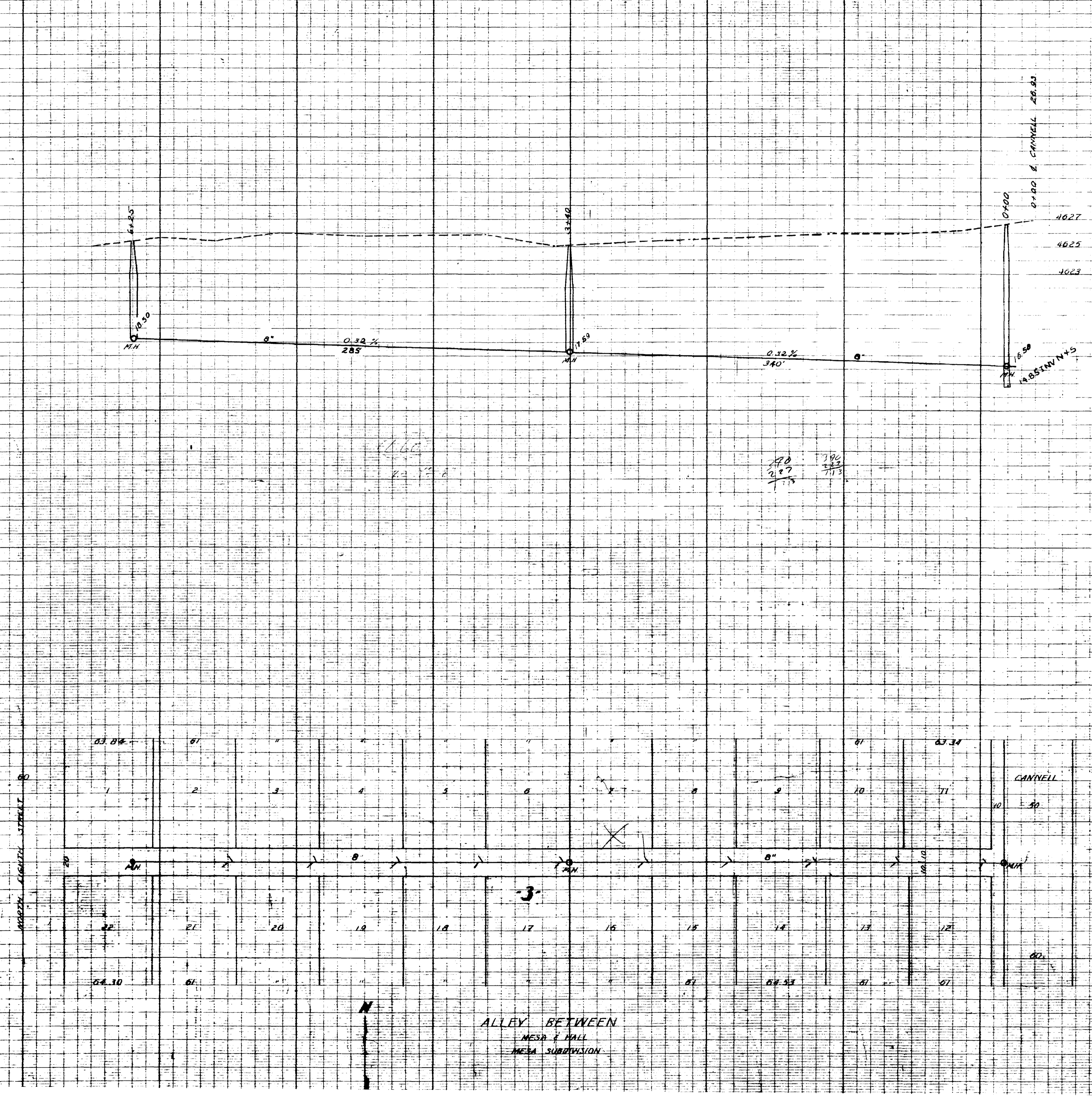
0.1254 = 1.25' Block

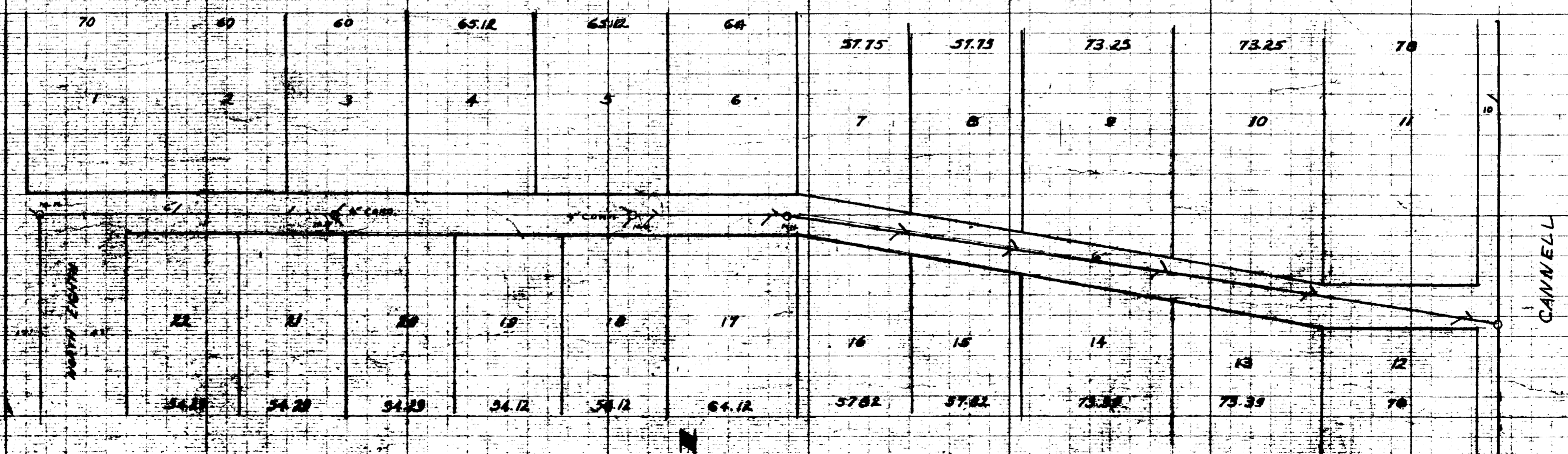
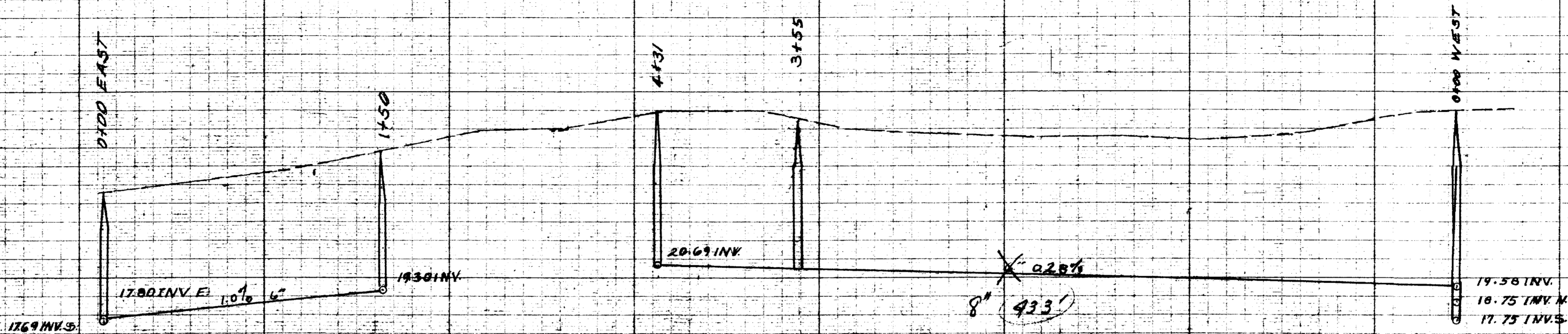


ALLEY BETWEEN
 HUNTING & ARCADE AVE
 BLOCK 2
 2000 1500 1000 500



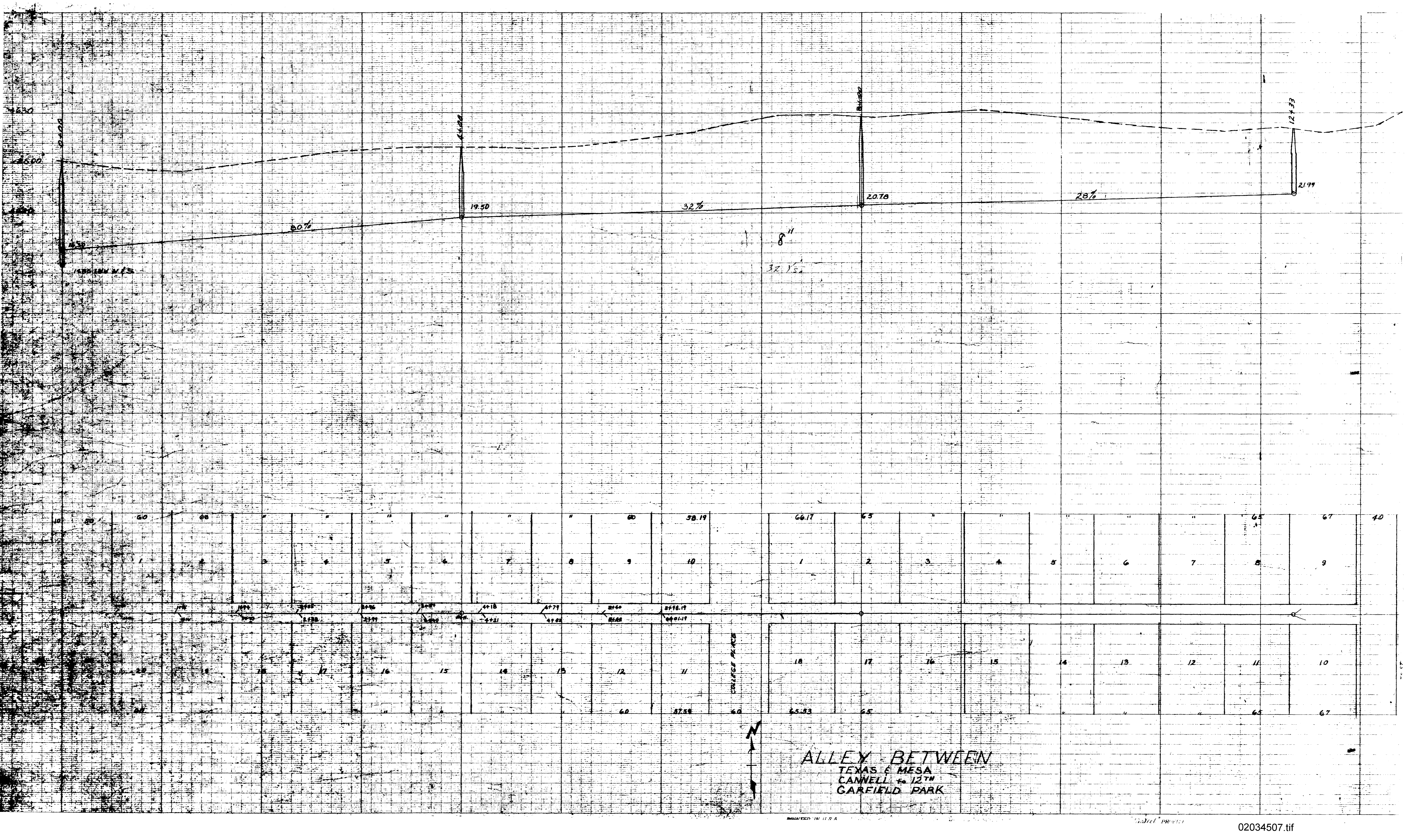






ALLEY BETWEEN
ORCHARD HILL
MESA SUBDIVISION

GARFIELD



0.0%

32%

28%

8'

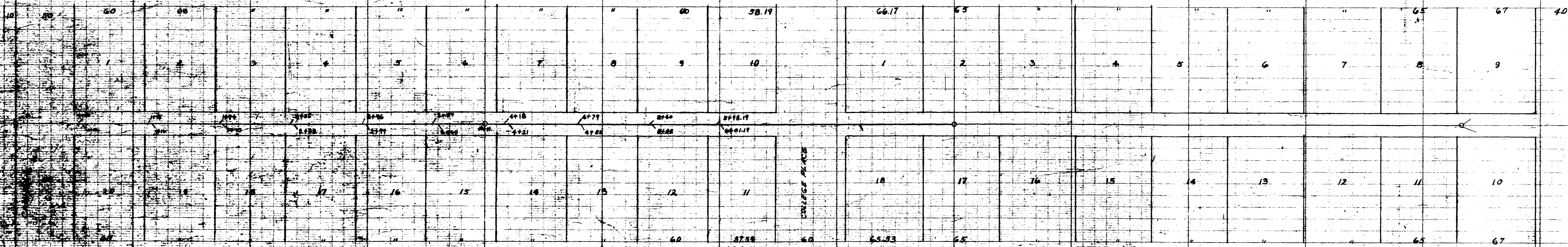
32 1/2'

19.50

20.78

21.99

12+53



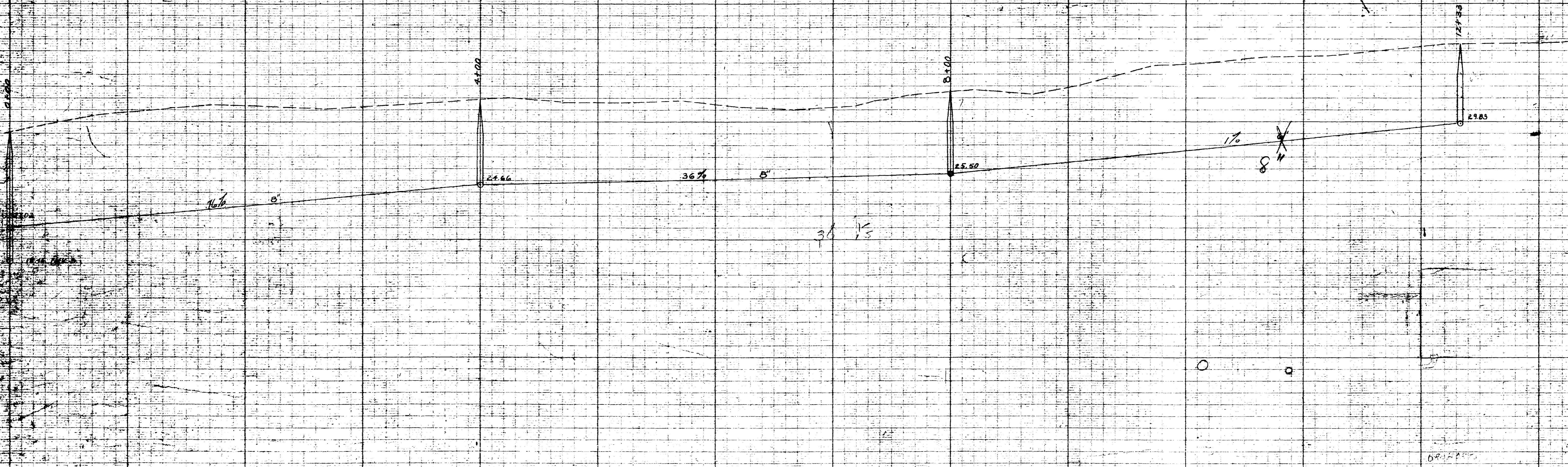
ALLEY PLACE



ALLEY BETWEEN
TEXAS & MESA
CANNELL to 12TH
GARFIELD PARK



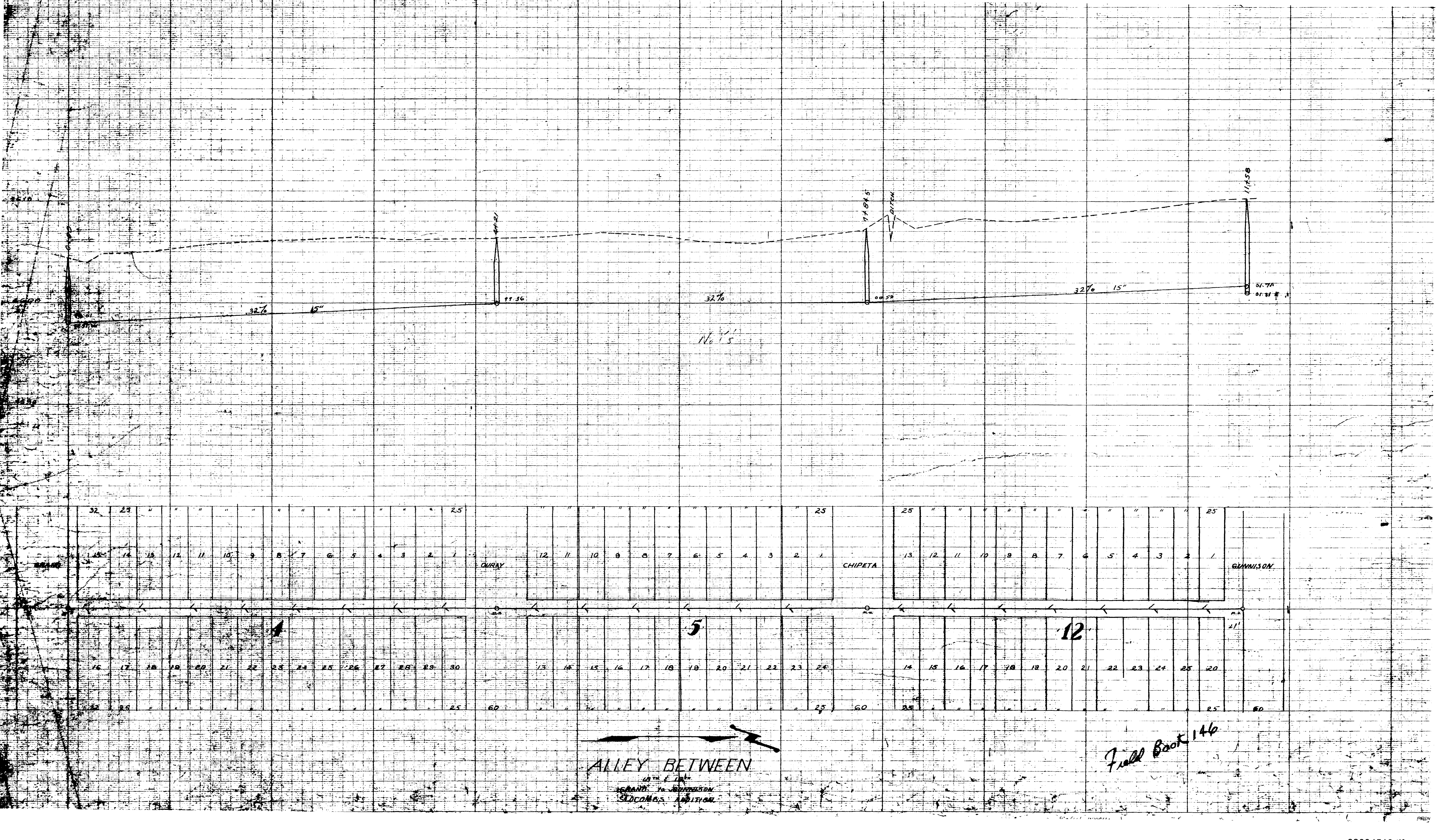
ALLEY BETWEEN
 HALL MESA
 CANNELL to 12TH
 GARFIELD PARK



51	51	66	66	60	"	"	"	60	63.77	67.72	55	"	"	"	"	65	67
1	2	3	4	5	6	7	8	9	10	1	2	3	4	5	6	7	8
20	19	18	17	16	15	14	13	12	11	10	9	8	7	6	5	4	3
51	51	66	66	60	"	"	"	60	63.77	67.72	55	"	"	"	65	67	40

ALLEY BETWEEN
 ORCHARD & HALL
 CANNELL TO 12TH
 GARFIELD PARK

12th St

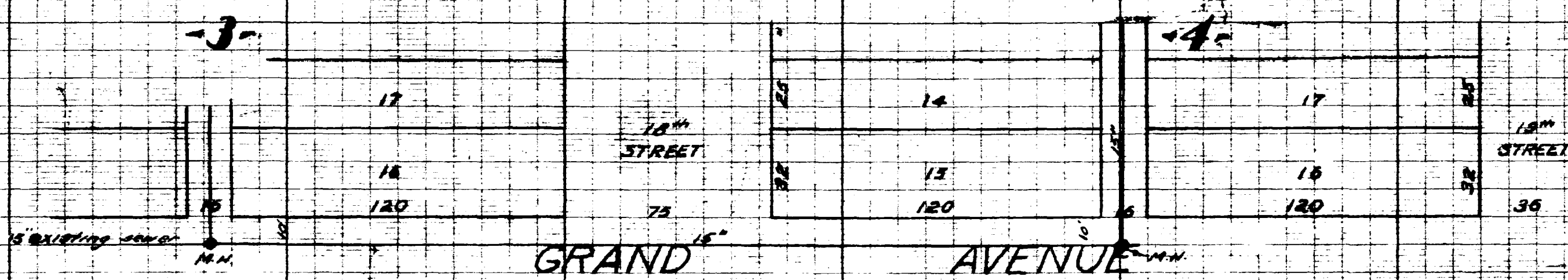
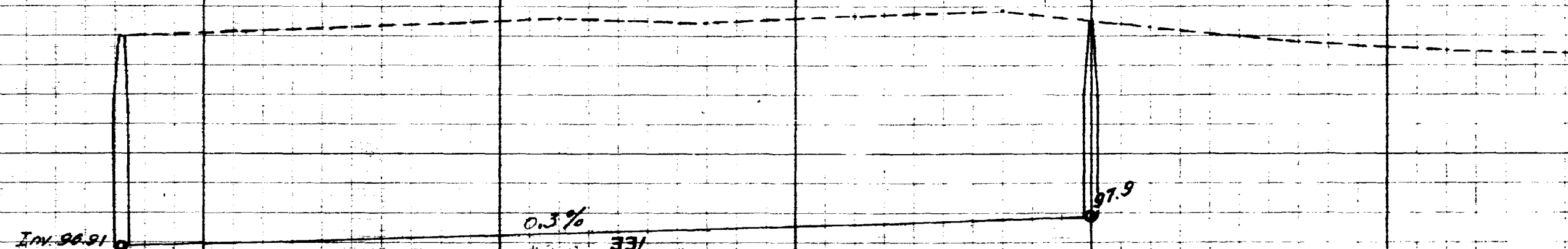


ALLEY BETWEEN
 5'
 10TH E 10TH
 ISLAND IN GUNNISON
 SLOCUM'S ADDITION

Field Book 146

4610

4600



GRAND AVENUE

GRAND AVENUE
18" + 18"
SLOUGH'S ADDITION

