

INDEX	
SHEET 1	PLAN SHEET
SHEET 2	PROFILE SHEET
SHEET 3	DETAIL SHEET

**SANITARY SEWER**  
**FOR**  
**WALKER HEIGHTS SUBDIVISION**

City of Grand Junction  
 Colo.  
 1972

**ENGINEERING DEPARTMENT**  
 City of Grand Junction  
 1972

DRWN BY EAW  
 DATE: 4-72  
 SCALE: As Noted  
 FIELD BOOK: 294

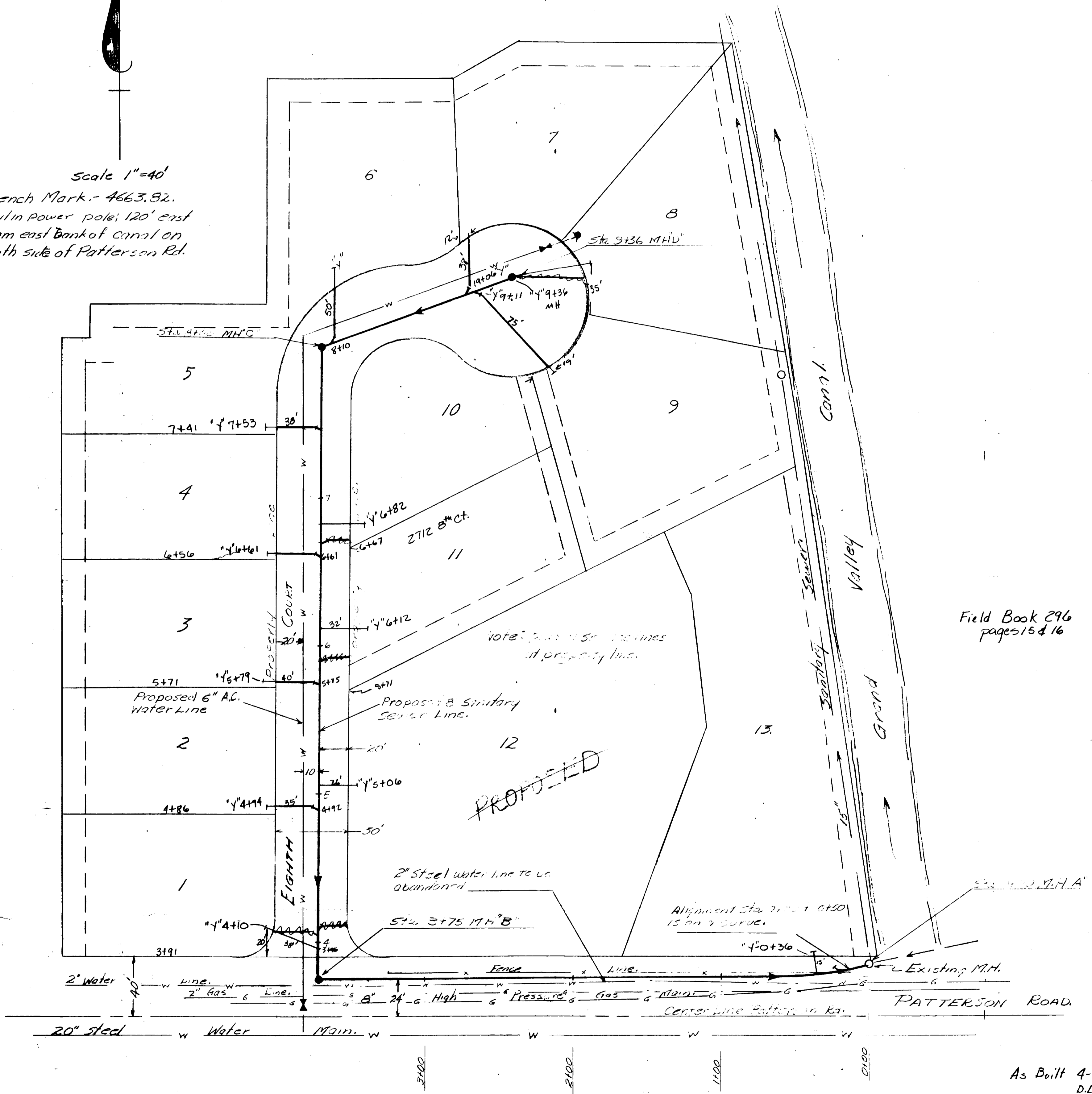
APPROVED BY  
  
 CITY ENGINEER

N



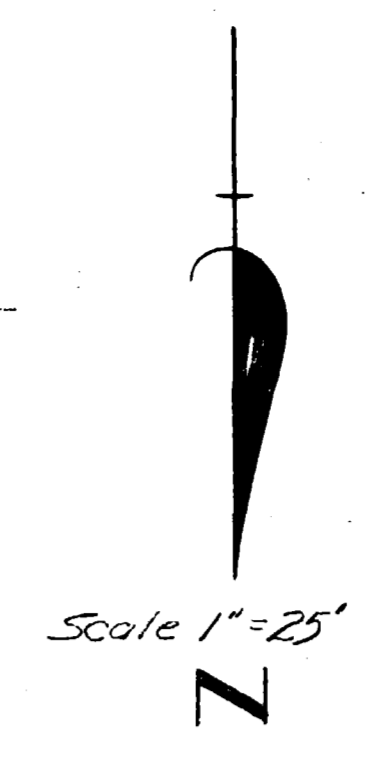
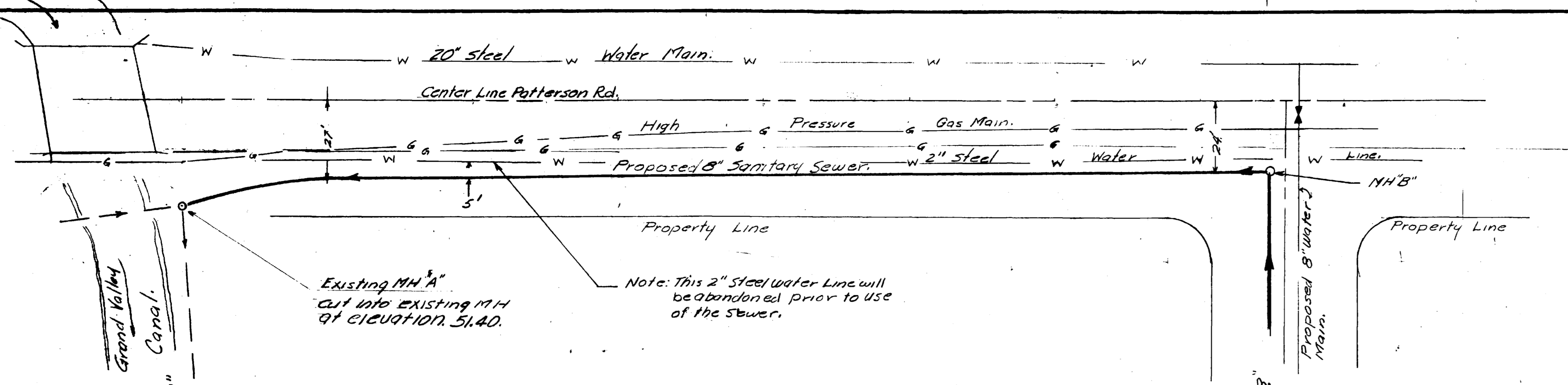
Scale 1"=40'

Bench Mark - 4663.82.  
Nail in Power pole; 120' east  
from east bank of canal on  
south side of Patterson Rd.



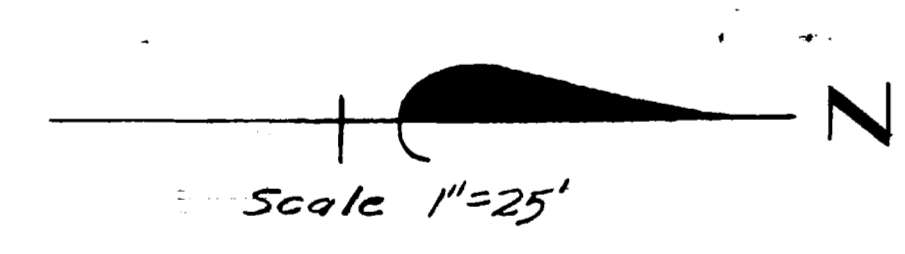
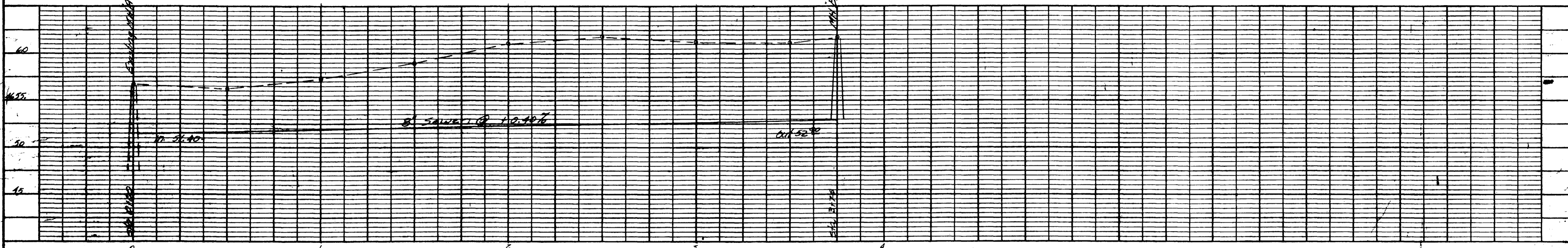
Field Book 296  
pages 15 & 16

As Built 4-6-83  
D.L.C.



Existing MH "A"  
cut into existing MH  
at elevation 51.40.

Note: This 2" steel water line will  
be abandoned prior to use  
of the sewer.



See Sheet No. 1 for Topographic  
features

APPROXIMATE WYE LOCATIONS.

- 0+20 Right (do not extend to Property line)
- 4+05 left
- 4+09 Right
- 4+90 left
- 5+76 left
- 5+90 Right
- 6+62 left
- 6+70 Right
- 7+45 left
- 8+05 left
- 9+03 left
- 9+07 Right
- 9+36 Stub east for lot B.

Refer to  
sheet #1

Note: Run all service lines  
to property line & plug.

