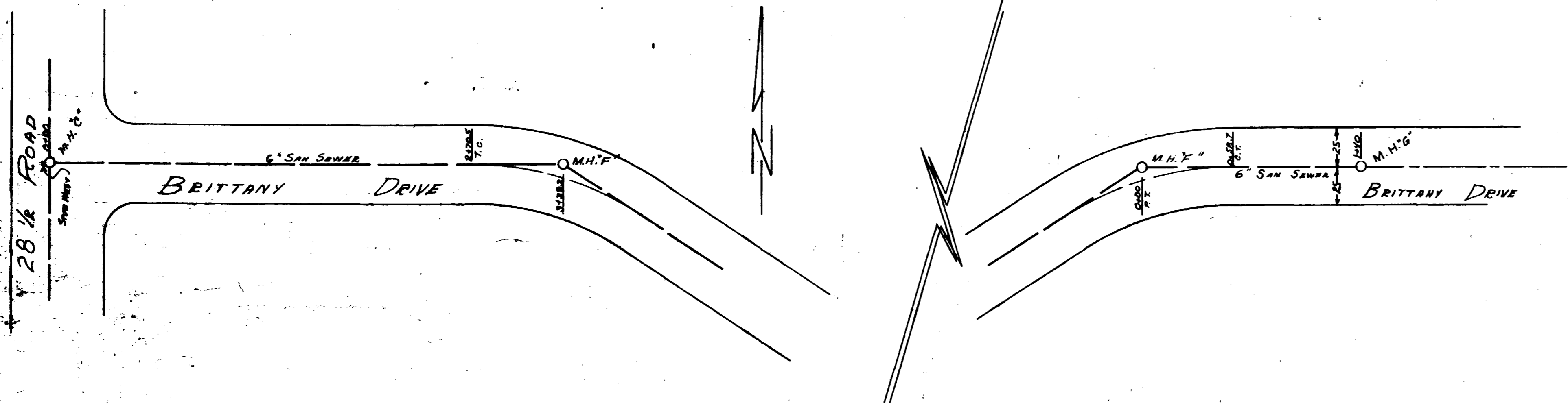
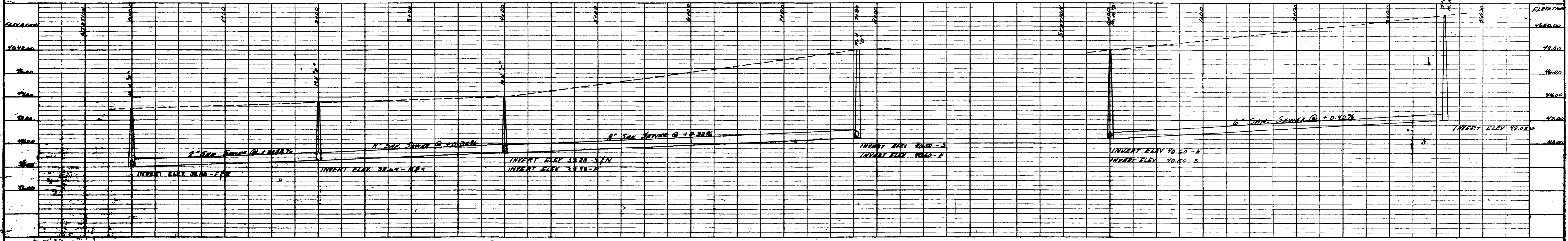
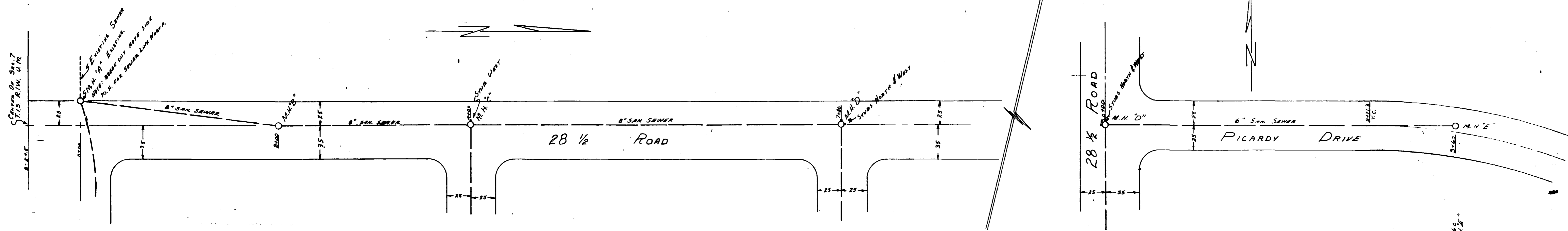
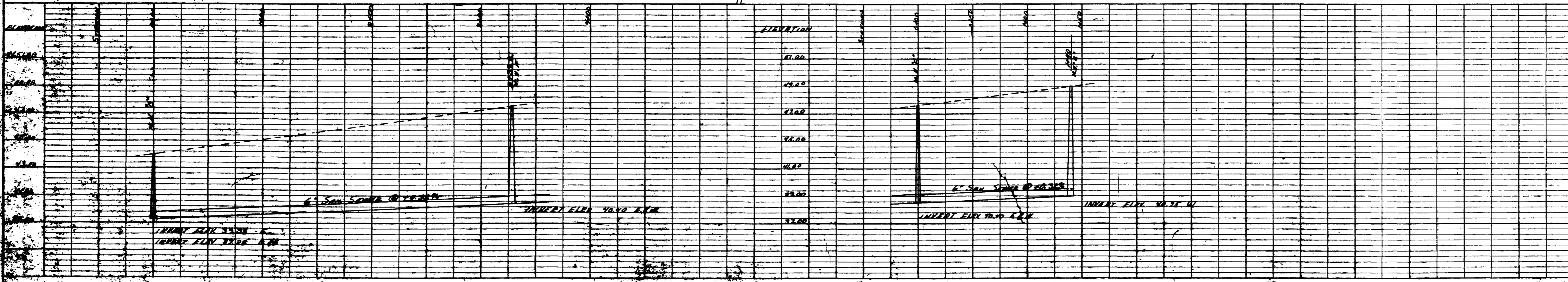


ENGINEERING DEPT CITY OF GRAND JUNCTION, COLO.	
SAN SEWERS FOR ROTHHAUPT SUB.	
KEY MAP OF M.H.'s	
DATE: APR 10-1962 CITY ENGINEER: CHAS. R. FRANKLIN	APPROVED: CITY ENGINEER: [Signature] CITY DIRECTOR: [Signature]
SCALE: 1" = 60'	SHEET NO: 1 of 3



NOTE:
PROPERTY OWNER TO
LOCATE WYES



NOTE: CITY ENGINEER'S STANDARD SPECIFICATIONS SHALL APPLY

BENCH MARK
ELEV. 46.75 ± 0.06
NE COR. BAY T.R. @ R.R. AND DEWATER

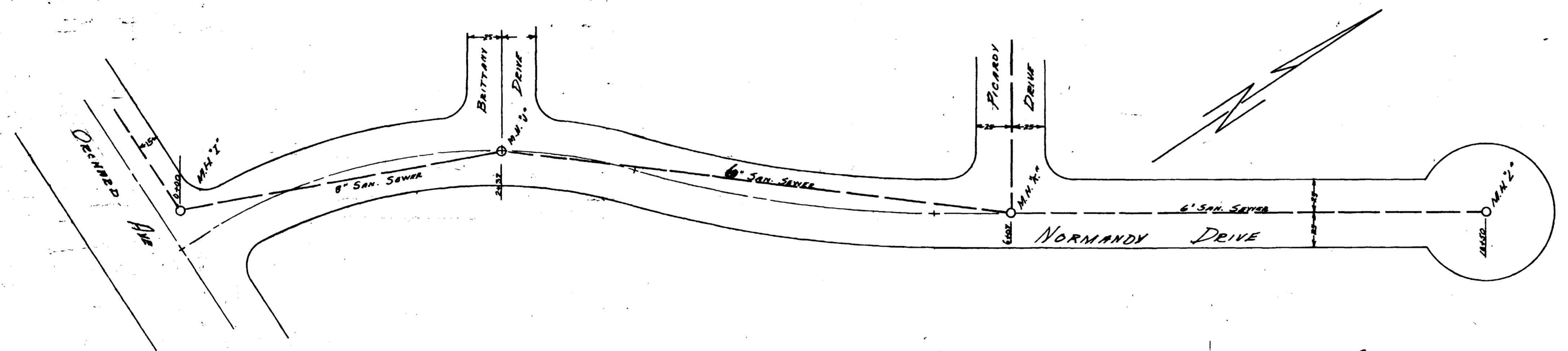
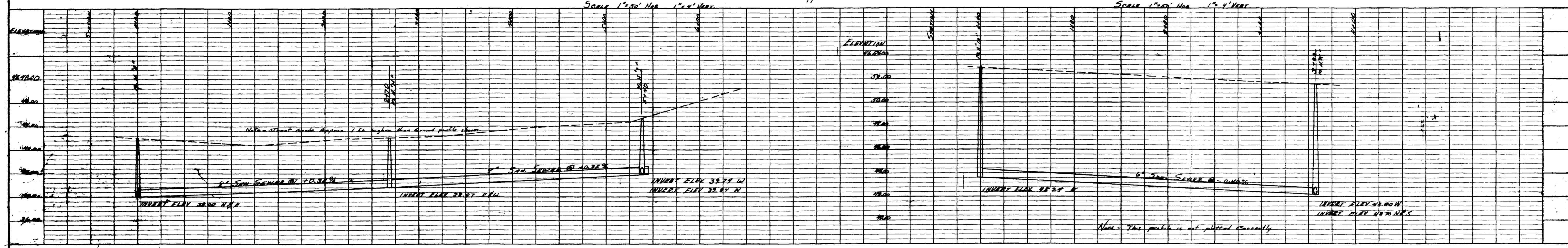
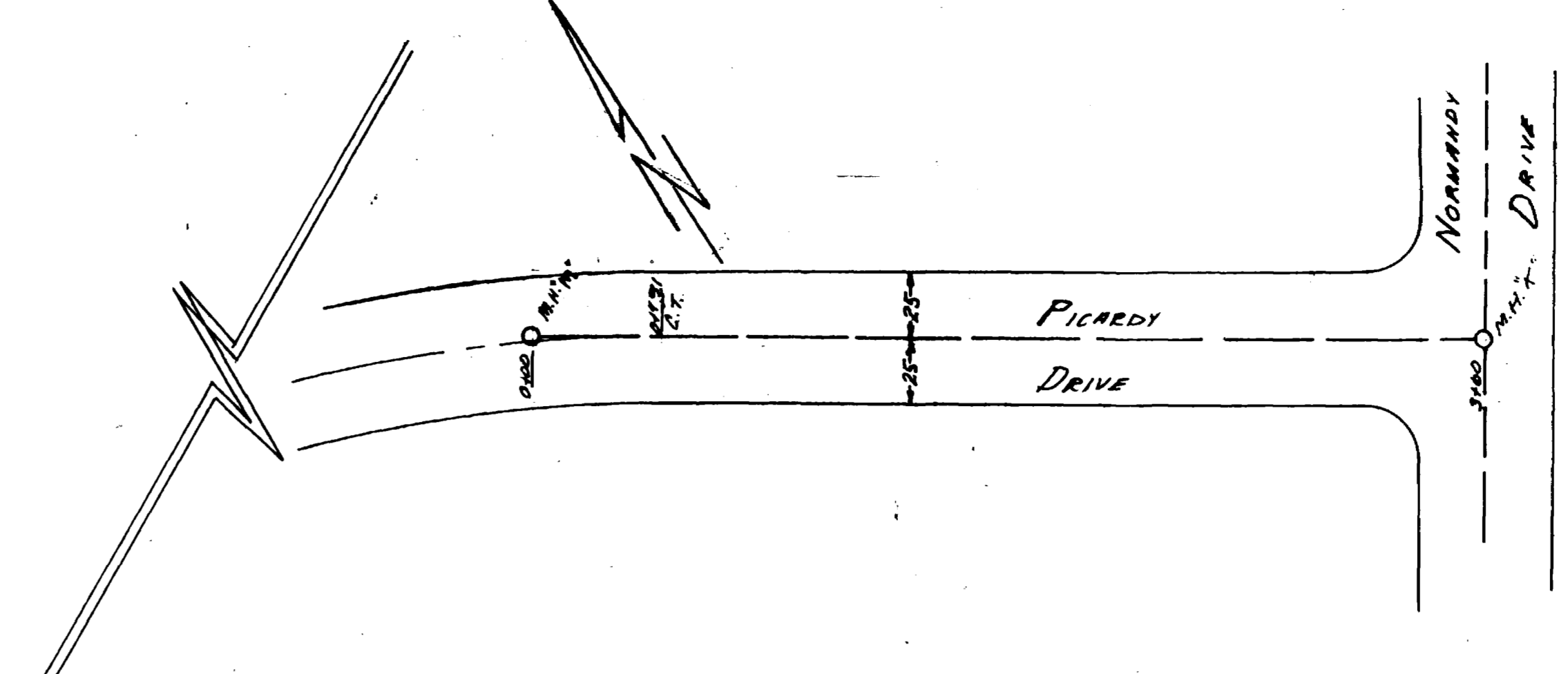
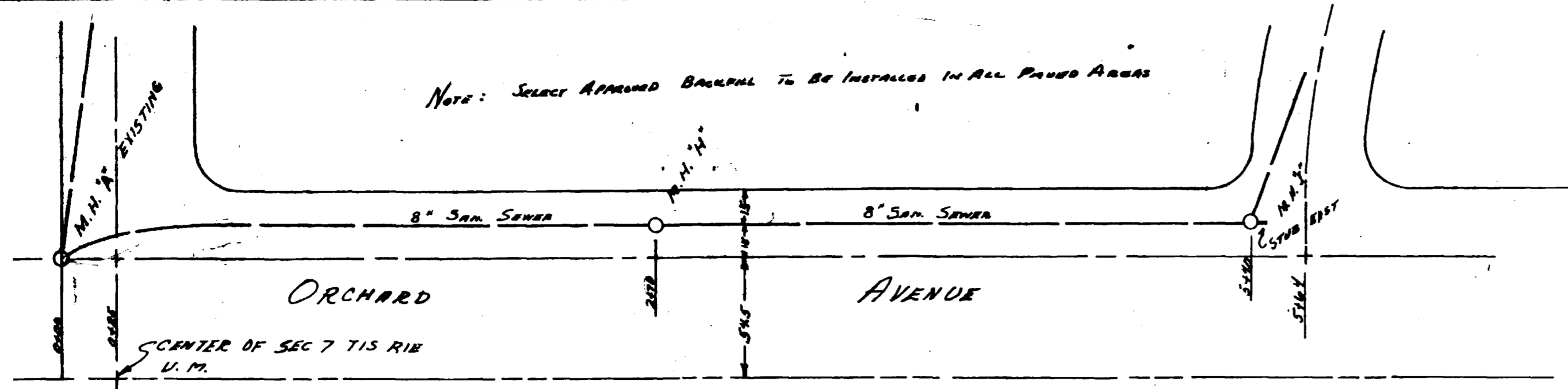
ENGINEERING DEPT
CITY OF BRNO JUNCTION

5/11/20
SAN SEWERS FOR
ROTHHARDT SUB

SEWER LINES FROM M.H. 'A' TO M.H. 'G'

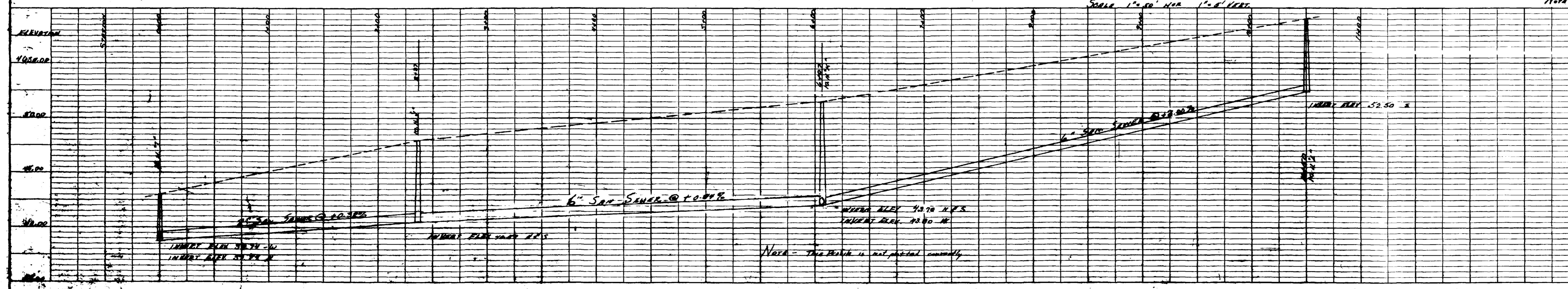
PREP. BY: J. W. [unclear]
CHECKED BY: [unclear]
DATE: [unclear]
SCALE: [unclear]

2 of 3



I am sure you will find the sewer was paid for in cash on private lot.

Note: Property Owner to Locate W/locations
 Note: City of Grand Junction Standard Specifications Sewer Agency



CITY ENGINEERING DEPT
 GRAND JUNCTION, COLORADO

SAN SEWERS
 ROTHHAUPT SUB

SEWER LINES FROM M.H. 1 TO M.H. 3

DWG. NO. 17-10-62 APPROVED

DATE 12-10-62

BY [Signature] CITY ENGINEER

SCALE 1"=50' HOR 1"=4' VERT

BY [Signature]