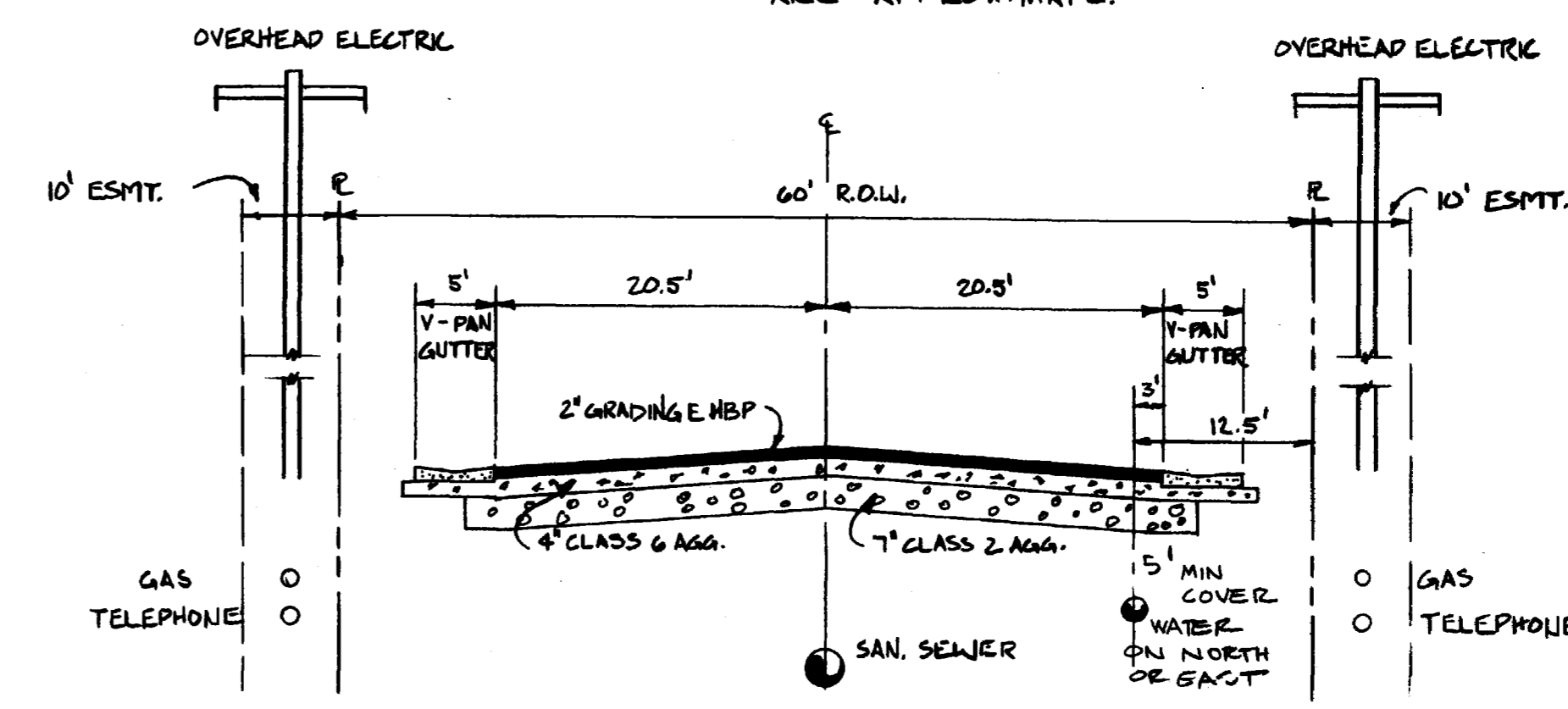
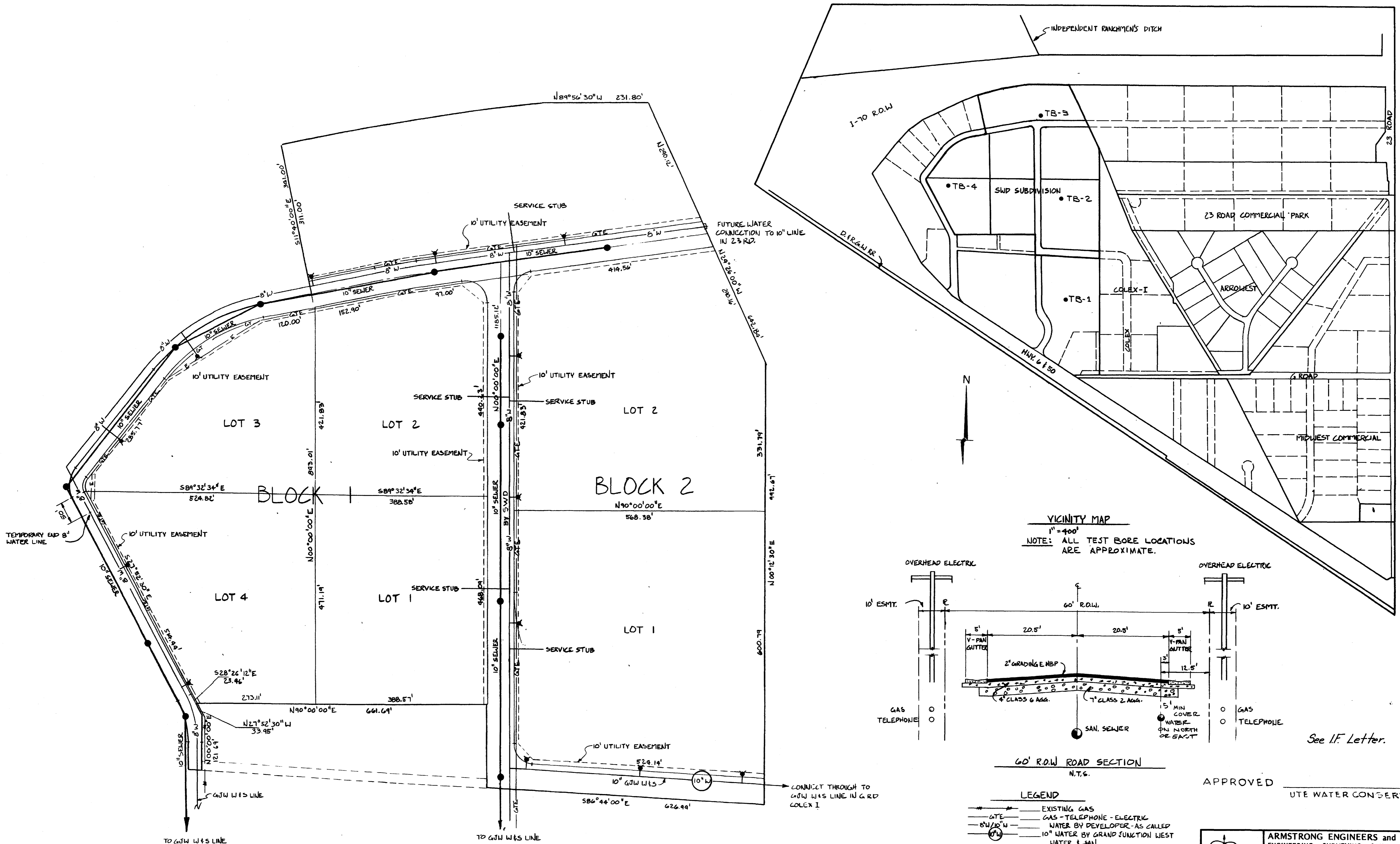


SWD SUBDIVISION

LOCATED IN THE SW 1/4 SEC. 31, T.1N., R.1W.



- LEGEND**
- EXISTING GAS
 - GATE
 - GAS - TELEPHONE - ELECTRIC
 - 8" W/10" W
 - 10" WATER BY DEVELOPER - AS CALLED
 - 10" WATER BY GRAND JUNCTION WEST WATER & SAN.
 - AS CALLED, BY DEVELOPER
 - FIRE HYDRANT
 - SEWER

APPROVED _____
UTE WATER CONSERVANCY DISTRICT

ARMSTRONG ENGINEERS and ASSOCIATES, INC.
ENGINEERING • SURVEYING • SOILS AND CONCRETE TESTING
861 ROOD AVENUE - GRAND JUNCTION, COLORADO 81501 - (303) 245-3861

SCALE: 1"=100'
DATE: 11/10/80
DRAWN BY: RLC
CHECKED BY: JLB
DATE OF REVISION: _____

SWD SUBDIVISION
UTILITY COMPOSITE & VICINITY

SHEET 1 of 1 JOB NUMBER: 803079