

ALL CONSTRUCTION WAS IN ACCORDANCE WITH CITY OF GRAND JUNCTION STANDARD SANITARY SEWER DETAILS DRAWING SS-1 AND SHALL CONFORM TO CITY OF GRAND JUNCTION STANDARD SPECIFICATIONS FOR CONSTRUCTION OF WATER LINES, SANITARY SEWERS, STORM DRAINAGE AND IRRIGATION SYSTEMS, 1981, AND CITY OF GRAND JUNCTION GENERAL CONTRACT CONDITIONS FOR PUBLIC WORKS AND UTILITIES CONSTRUCTION GC-37, GC-50 AND GC-65.

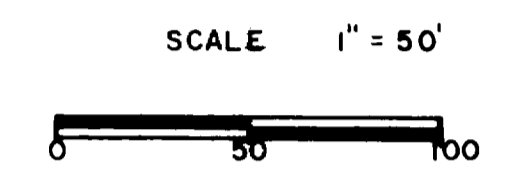
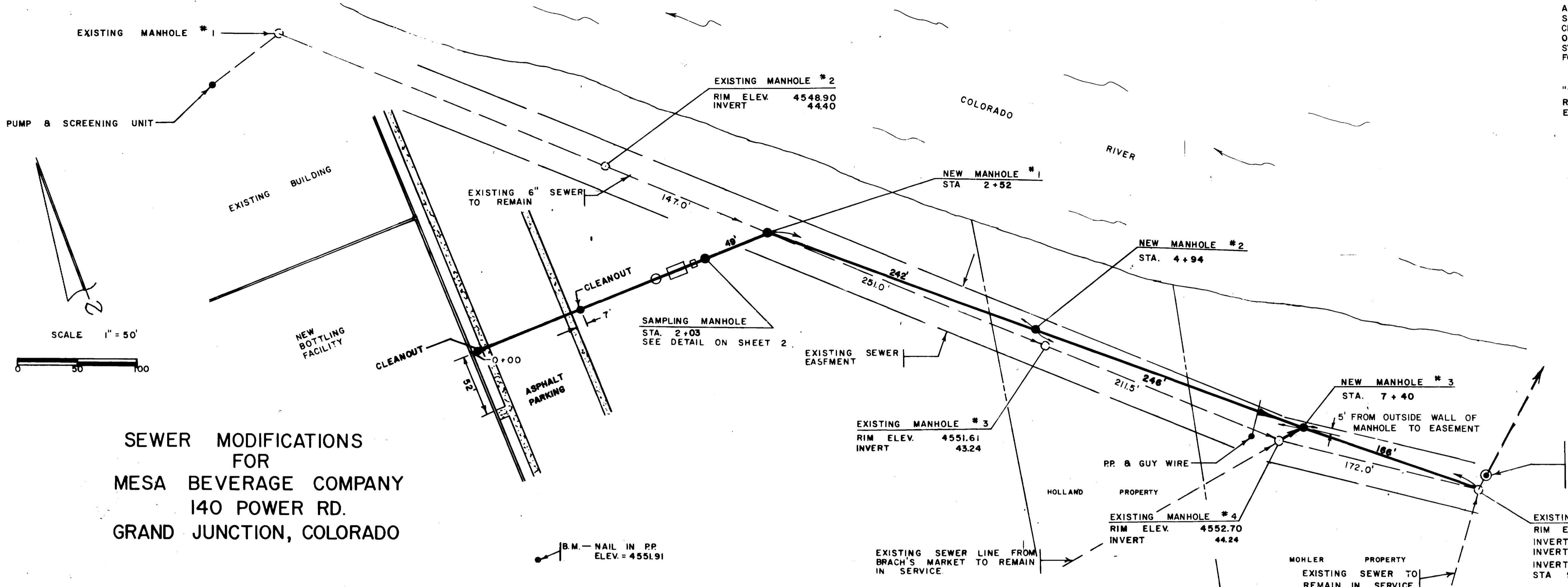
"THE CONTRACTOR DID CONTACT THE CITY UTILITIES SUPERINTENDENT, MR. RALPH STERRY, (244-1568) PRIOR TO ANY WORK INVOLVING EXISTING LINES. EXISTING SEWER FLOWS MUST BE MAINTAINED AT ALL TIMES.

I certify that on January 10, 1983 an infiltration test was performed, and infiltration did not exceed 200 gallons per inch diameter per mile per day.

*Larry D. Cockcroft*

EXISTING LIFT STATION  
DUPLX STA. BY SMITH  
& LOVELASS  
CAPACITY EACH PUMP = 150 G.P.M.

REVISED 1-17-82



**SEWER MODIFICATIONS  
FOR  
MESA BEVERAGE COMPANY  
140 POWER RD.  
GRAND JUNCTION, COLORADO**

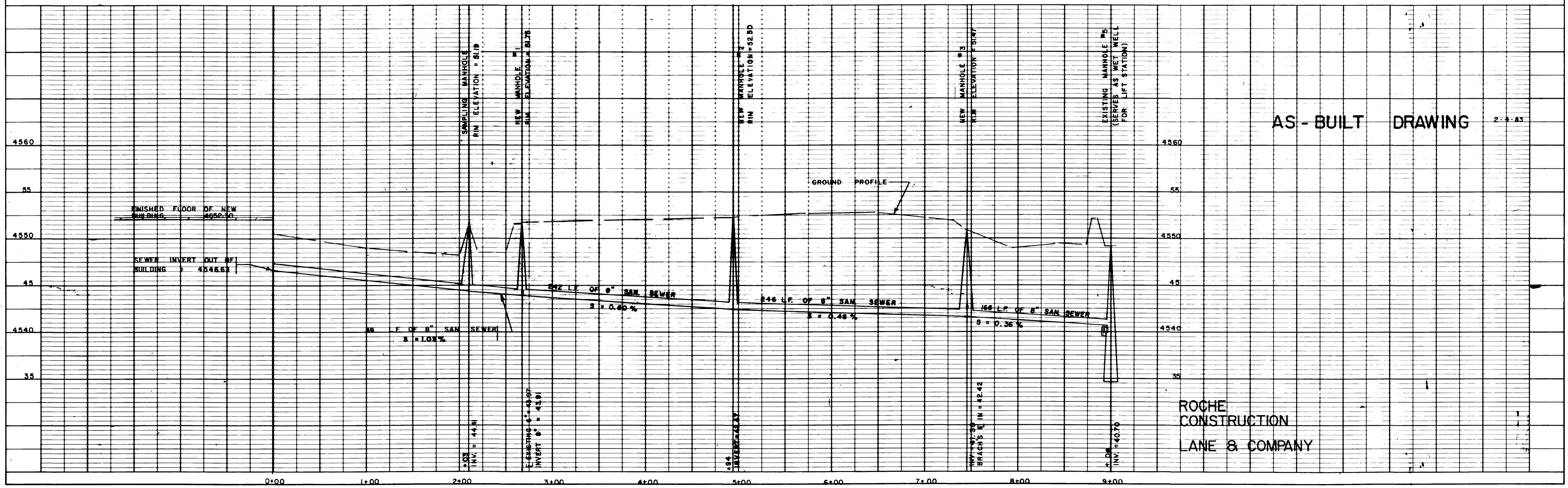
B.M. - NAIL IN PP.  
ELEV. = 4551.91

EXISTING SEWER LINE FROM  
BRACH'S MARKET TO REMAIN  
IN SERVICE

MOHLER PROPERTY  
EXISTING SEWER TO  
REMAIN IN SERVICE

EXISTING MANHOLE #5  
RIM ELEV. 4549.15  
INVERT OF M.H. 34.75  
INVERT WEST 41.70  
INVERT SOUTH 44.33  
STA 9+06

**AS-BUILT DRAWING** 2-4-83



**ROCHE  
CONSTRUCTION  
LANE & COMPANY**