

CERTIFICATION

In Accordance with the City of Grand Junction Specifications and Based on an Actual Field Test of this Project, I hereby Certify that the Exfiltration Rates as Stated in the Standard Specifications for the City of Grand Junction were Not Exceeded.

By: K. E. Koler 3-18-83
Date

AS - BUILT
March 17, 1983

Reviewed By: K. E. Koler 11-19-82
Date

Approved By: David M. [Signature] 11-12-82
Date

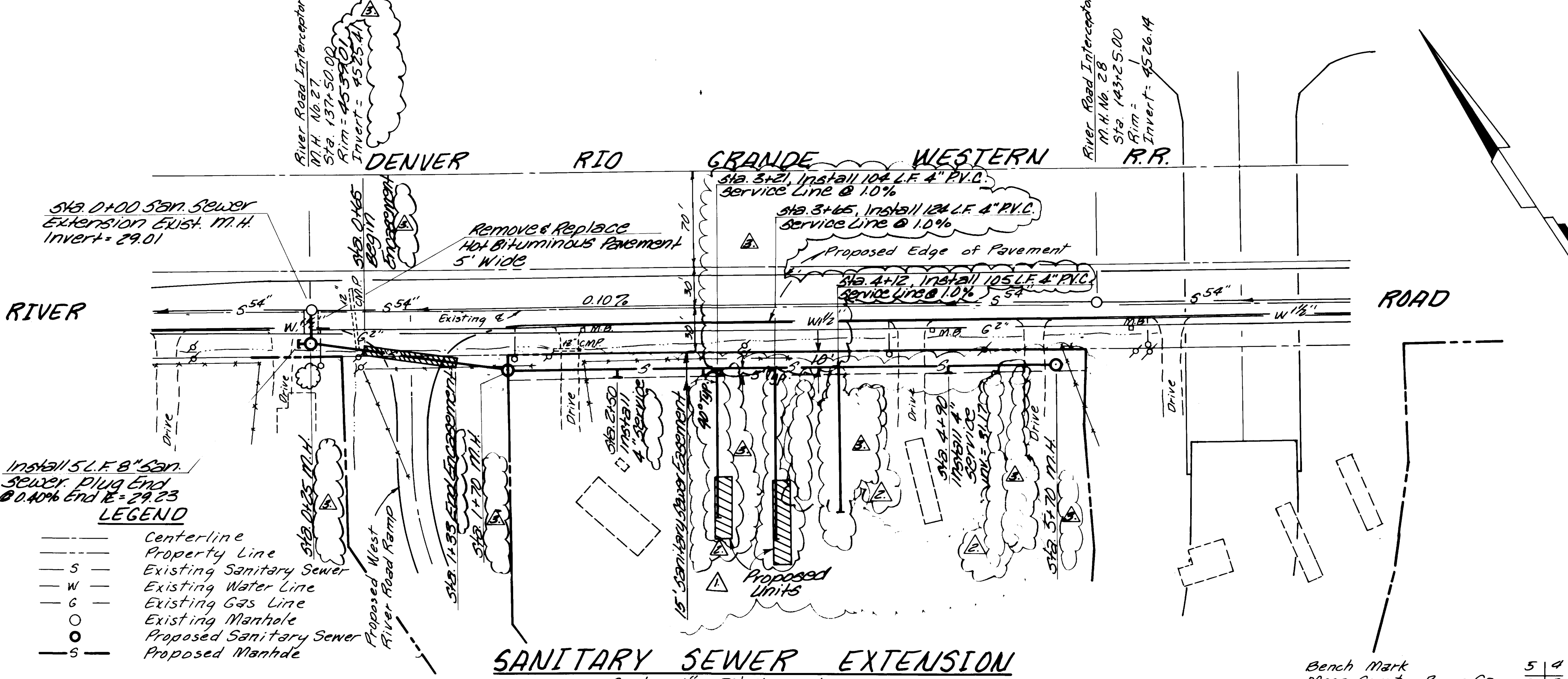
ARMSTRONG & ASSOCIATES, INC.
725 S. Broadway, Suite 16
Grand Junction, Colorado 81501
(303) 733-4401

Architects
Engineers
Planners
Surveyors
Soil Testing
Material Testing
U.S. Mineral Surveyors
Geotechnical Engineers

Sanitary Sewer Extension
Redlands Parkway
Overpass

Project No: 823890
Date: Nov. 15, 82
Revisions:
11-23-82
12-01-82
03-21-83 As-Built
Drawn: ALH
Checked:
Approved:

Sanitary Sewer
Plan & Profile
Quantities
Certification



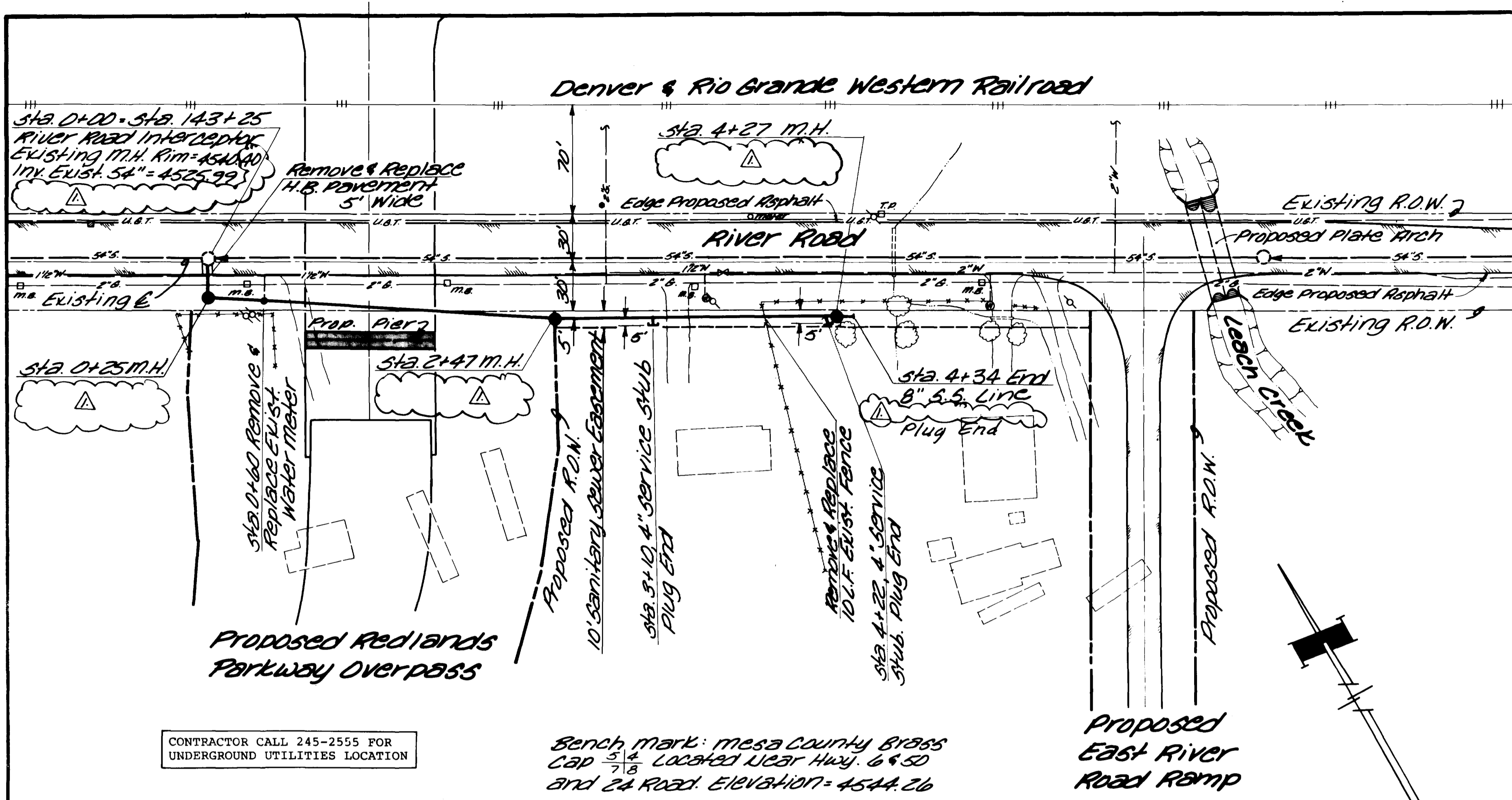
SANITARY SEWER EXTENSION

Scale: 1" = 50' Horizontal
1" = 5' Vertical

Bench Mark
Mesa County Brass Cap 5 | 4
7 | 8
Located Near Hwy: 6950
and 24 Road. Elev. = 4544.26

		LIST OF QUANTITIES	
Item #	Description	Unit	Quan.
4540	25 L.F. 8" ABS Plastic or PVC Sanitary Sewer @ 0.40%		
	145 L.F. 8" ABS Plastic or PVC Sanitary Sewer @ 0.40%		
	400 L.F. 8" ABS Plastic or PVC Sanitary Sewer @ 0.40%		
	Existing Ground		
4530	5 L.F. 8" Stubout West Plug End @ 29.23		
	68 L.F. Sanitary Sewer Encasement		
4520	32 L.F. Wheel Cut H.B. Pavement	L.F.	32
	1.3 Ton Hot Bituminous Pavement	Ton	1.3
	3 Ea. Manhole (1.5 To 10 Ft.)	Ea.	3
	3 Ea. Manhole Ring & Cover	Ea.	3
	1 Ea. Modify Exist. Manhole	Ea.	1
	575 L.F. Sanitary Sewer Line (8")	L.F.	575
	343 L.F. Service Lateral (4" PVC)	L.F.	343
	68 L.F. Sanitary Sewer Encasement	L.F.	68

Note: Quantities are approximate. Payment to be made for a Lump Sum Bid.



- ### Legend
- Proposed Sanitary Sewer w/ Manhole
 - Existing River Road Interceptor
 - U&T— Exist. Underground Telephone
 - 2\"/>
 - 2\"/>
 - ***** Existing Fence

Certification

In accordance with the City of Grand Junction specifications and based on an actual field test of this project, I hereby certify that the exfiltration rates, as stated in the standard specifications for the City of Grand Junction were not exceeded.

By: Paul Z. Koler Date: 3-10-83

Reviewed By: A.G. King
Date: 1-27-83

Approved By: David M. Jernard

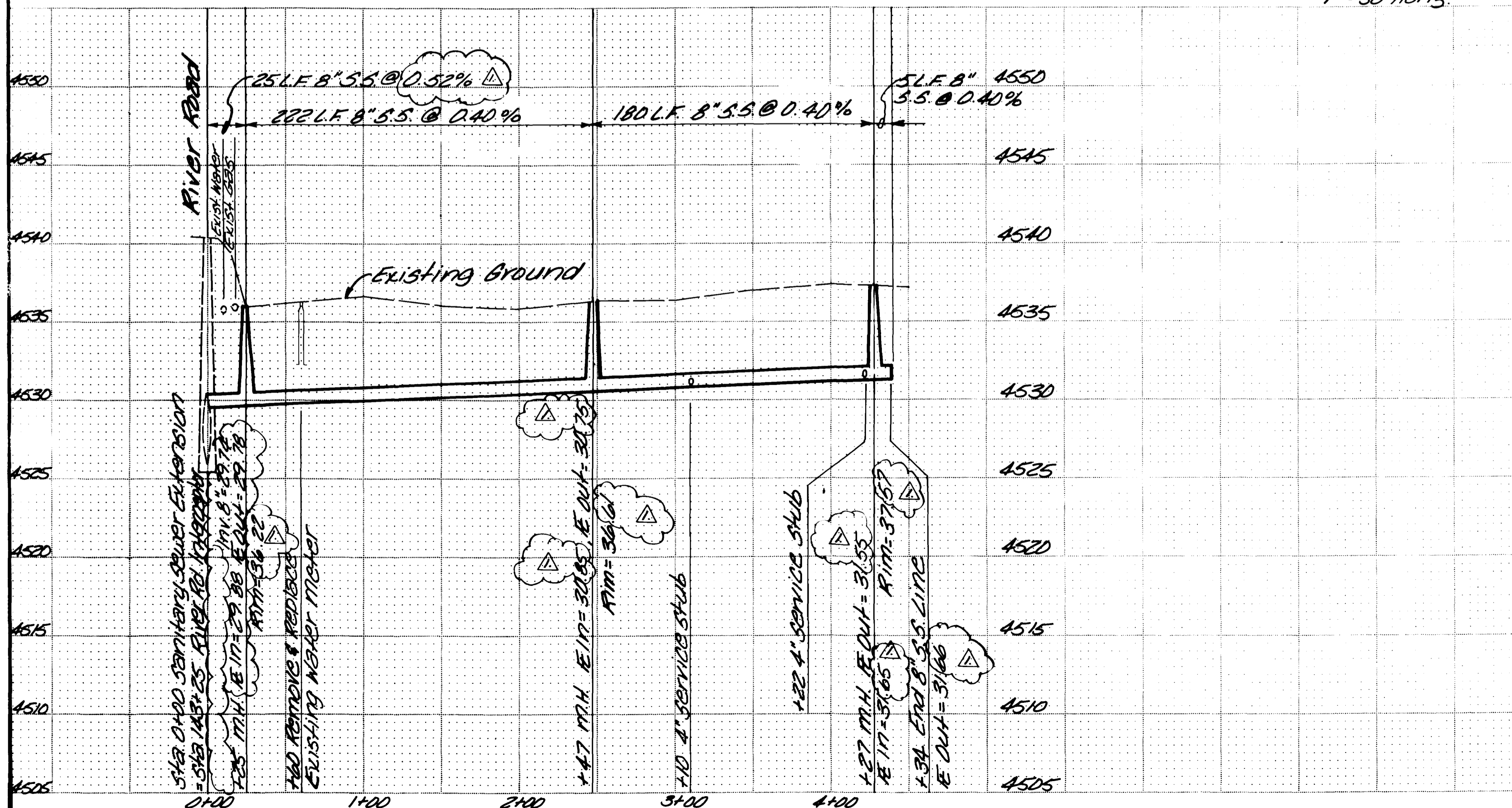
Date: 1-27-83

AS - BUILT
March 17, 1983

Scale: 1" = 5' Vert.
1" = 50' Horiz.

CONTRACTOR CALL 245-2555 FOR UNDERGROUND UTILITIES LOCATION

Bench mark: mesa County Brass Cap $\frac{3}{8}$ " Located Near Hwy. 6 & 50 and 24 Road. Elevation = 4544.26



Approximate Quantities

Item #	Description	Unit	Quan.
202	Wheelcut H.B. Pavement	L.F.	32
403	Cold Patch Pavement	Ton	1.3
604	Manhole (5 To 10 Ft.)	Ea.	3
604	Manhole Ring & Cover	Ea.	3
604	Modify Exist. Manhole	Ea.	1
604	8" Sanitary Sewer Line	L.F.	432
604	4" PVC Service Stub	L.F.	10
604	8" Plug	Ea.	1
210	Remove & Replace Exist. Fence	L.F.	10
210	Remove & Replace Exist. Water Meter	Ea.	1

ARMSTRONG & ASSOCIATES, INC.

725 S. Broadway Suite 16
Denver, Colorado 80209
(303) 733-4801

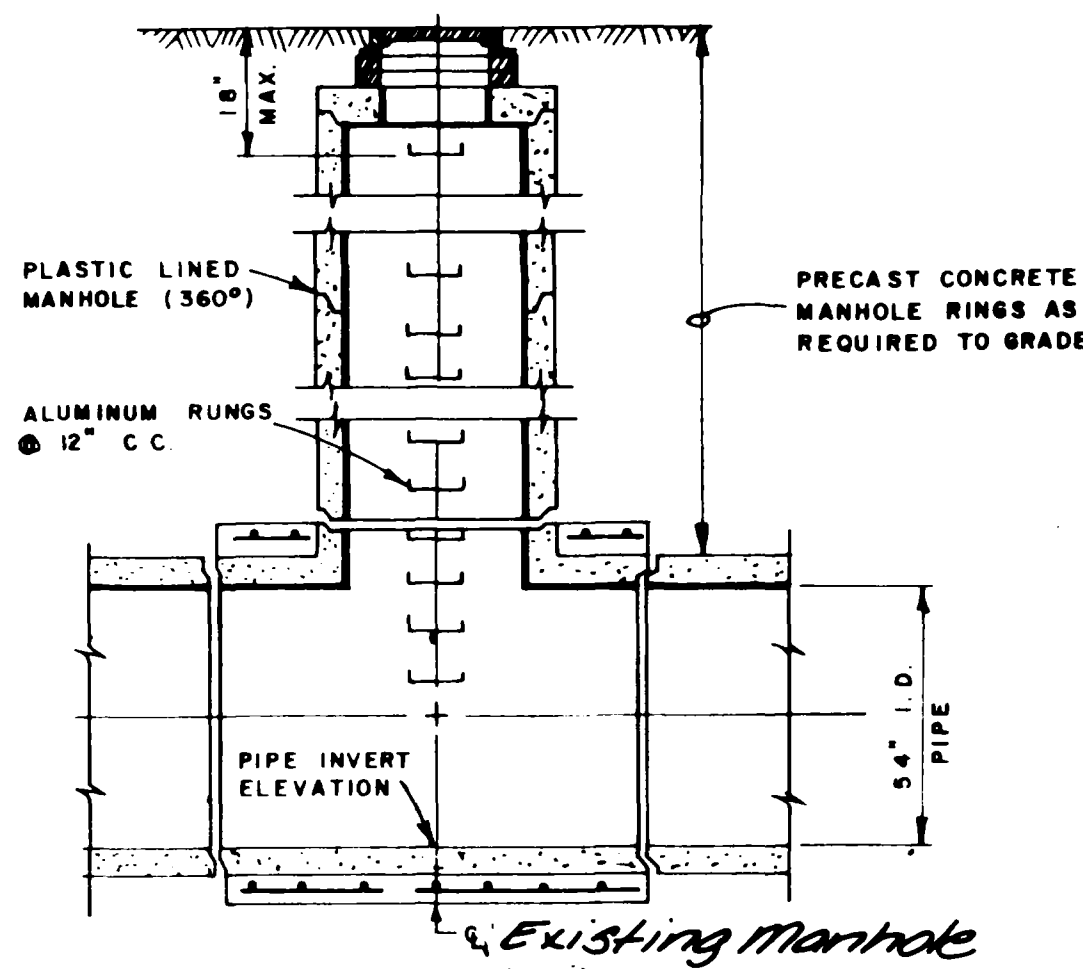
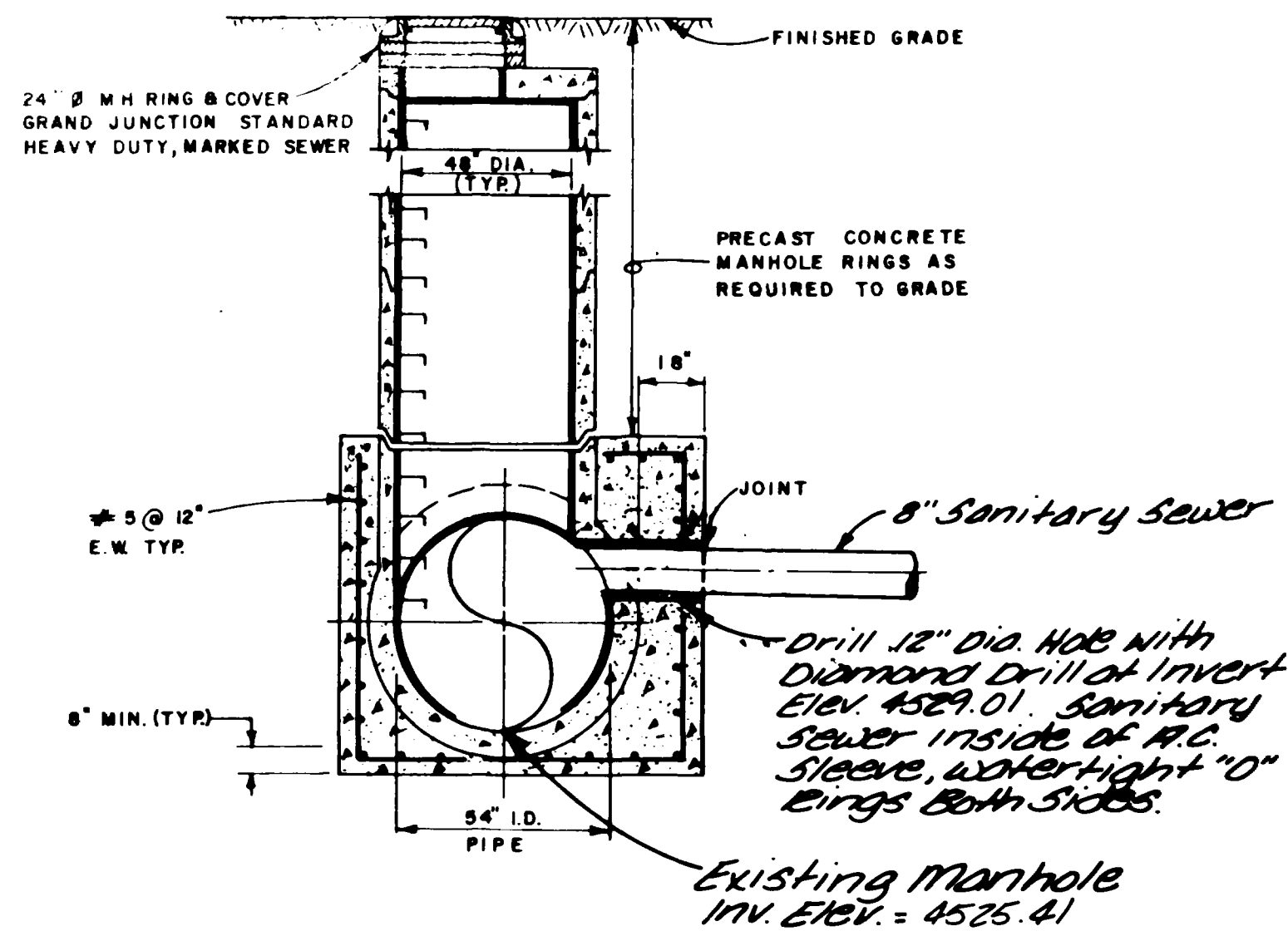
Architects
Engineers
Planners
Surveyors
Soil Testing
Material Testing
U.S. Mineral Surveyors
Geotechnical Engineers

Sanitary Sewer Extension
Redlands Parkway Overpass
Mesa County, Colorado

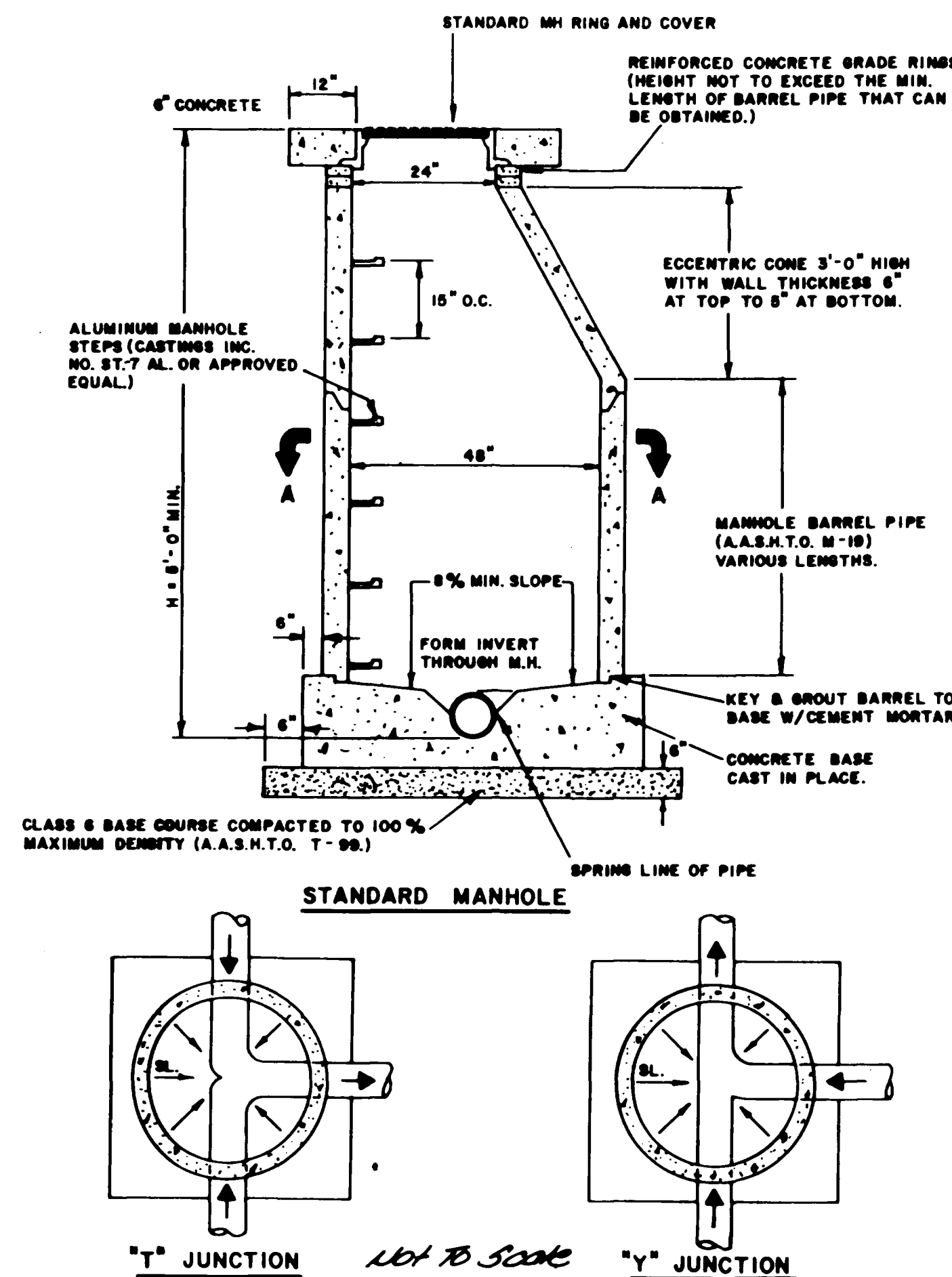
Project No: 823890
Date: 3-17-83
Revisions:
AS-Built 3-17-83
Drawn: JDC
Checked:
Approved:

Plan, Profile
Quantities
Certification

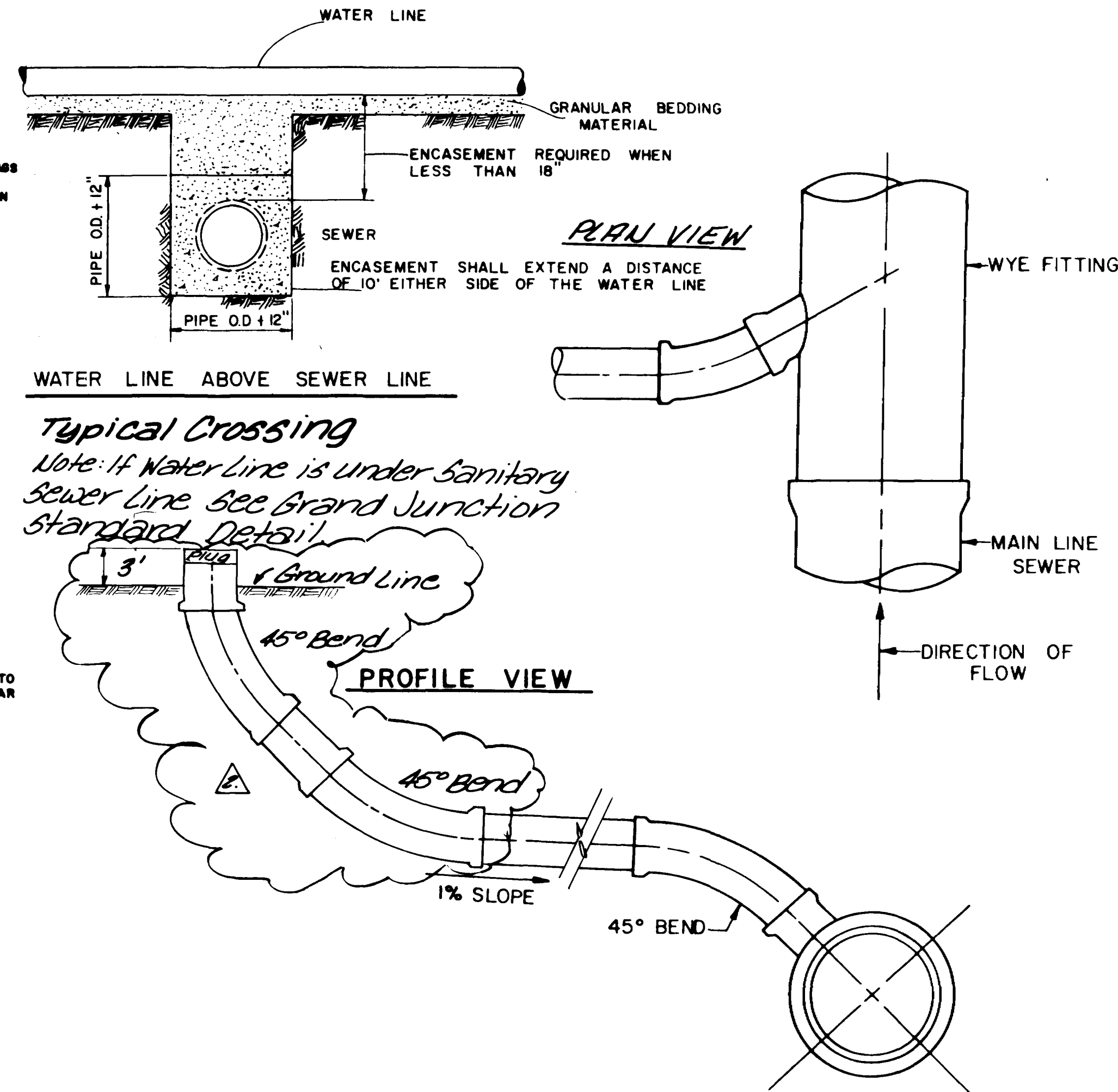
Sheet 1A of 2



TYPICAL MANHOLE DETAIL
RIVER ROAD INTERCEPTOR SEWER
Not To Scale



- Sanitary Sewer Notes**
- 1) All construction shall be done in accordance with City of Grand Junction Sanitary Sewer Details - Drawing 55-1, and shall conform to City of Grand Junction "Standard Specifications for Construction of Water Lines, Sanitary Sewer Lines, Storm Drainage and Irrigation Systems," 1981, and City of Grand Junction General Contract Conditions for Public Works and Utilities Construction GC-37, GC-50 & GC-65.
 - 2) All sewer mains shall be constructed with a 5 ft. minimum cover unless otherwise shown. All sewer elevations are invert elevations unless otherwise shown.
 - 3) **ABS Composite, PVC (Poly Vinyl Chloride) mains may be installed.**
 - 4) Any "break-ins" or modifications to existing installations shall be acceptable to the engineer or his representative.
 - 5) See Typical Trench Detail.
 - 6) All mains and laterals shall be tested using the air test or water method.
 - 7) Each 4" Lateral shall be set at a minimum grade of 1% with a minimum drop of 0.9' to the main, and the invert shall be at a minimum depth of 4.0' below finished grade of connection to collector, unless otherwise noted, the locations shall be determined by the engineer and shall be constructed perpendicular to the main.
 - 8) No laterals may be constructed into manholes.
 - 9) The Contractor is responsible for locating and protecting all buried utilities and their repair if damaged.
 - 10) Testing shall be in accordance with City of Grand Junction specifications. Armstrong & Associates shall be notified 48 Hours Prior to any testing to assure testing is performed as specified.

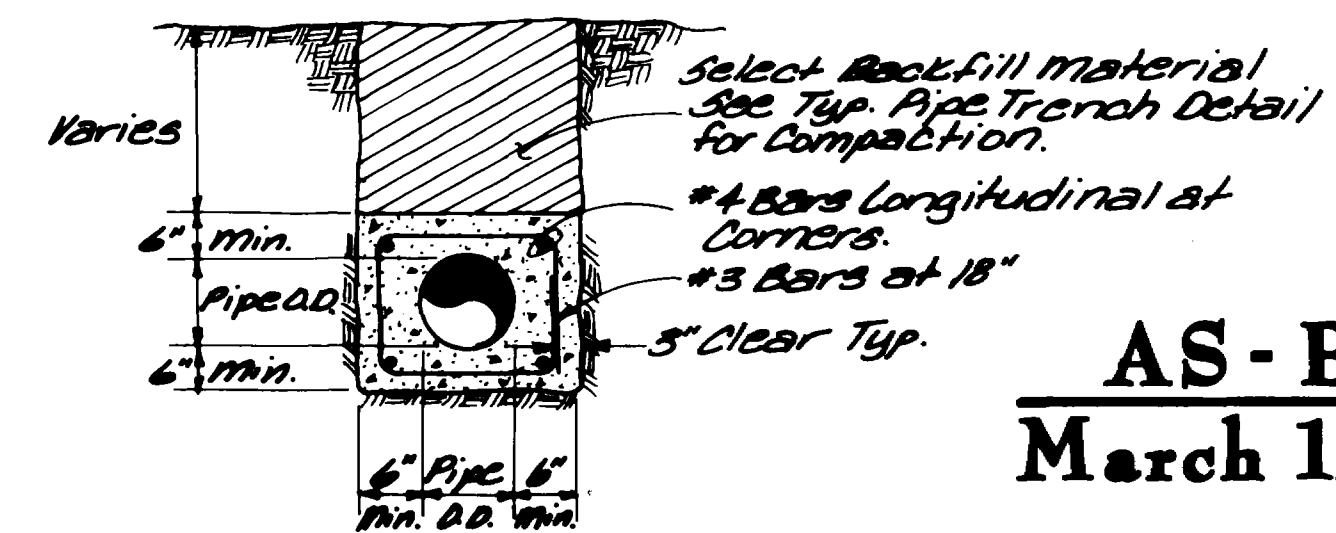


Typical Crossing
Note: If Water Line is under Sanitary Sewer Line See Grand Junction Standard Details.

STANDARD SEWER SERVICE CONNECTION
Not To Scale

General Notes

- 1) The Contractor shall restore all disturbed areas to a condition equal to or better than those that existed prior to construction.
- 2) The contractor is specifically cautioned that the location and/or elevations of existing utilities as shown on these plans is based on records of the various utility companies and, where possible, measurements taken in the field. The information is provided for the convenience of the Contractor and is not to be relied on as being exact or complete. The Contractor shall call the Mesa County Buried Utilities Location Service (245-2555) at least 48 hrs. before any excavation to request exact field location of utilities, or appropriate utility Co.
- 3) Subgrade at all traveled ways shall be compacted to 95% AASHTO T-180 at optimum moisture and the surface of all driveways shall be 6" of Class 6 Base of Bituminous Surface Compacted to 95% AASHTO T-180 at optimum moisture or as shown on Typical Trench Detail, on sheet C-9.



Concrete Encasement Detail

AS-BUILT
March 17, 1983

ARMSTRONG & ASSOCIATES, INC.
725 S. Broadway, Suite 18
Denver, Colorado 80209
(303) 733-4801

Architects
Engineers
Planners
Surveyors
Soil Testing
Material Testing
U.S. Mineral Surveyors
Geotechnical Engineers

Sanitary Sewer Extension
Redlands Parkway
Overpass

Project No: 823890
Date: Nov. 15, 82
Revisions:
11-29-82
12-01-82
Drawn: JOC
Checked:
Approved:

Sanitary Sewer Details