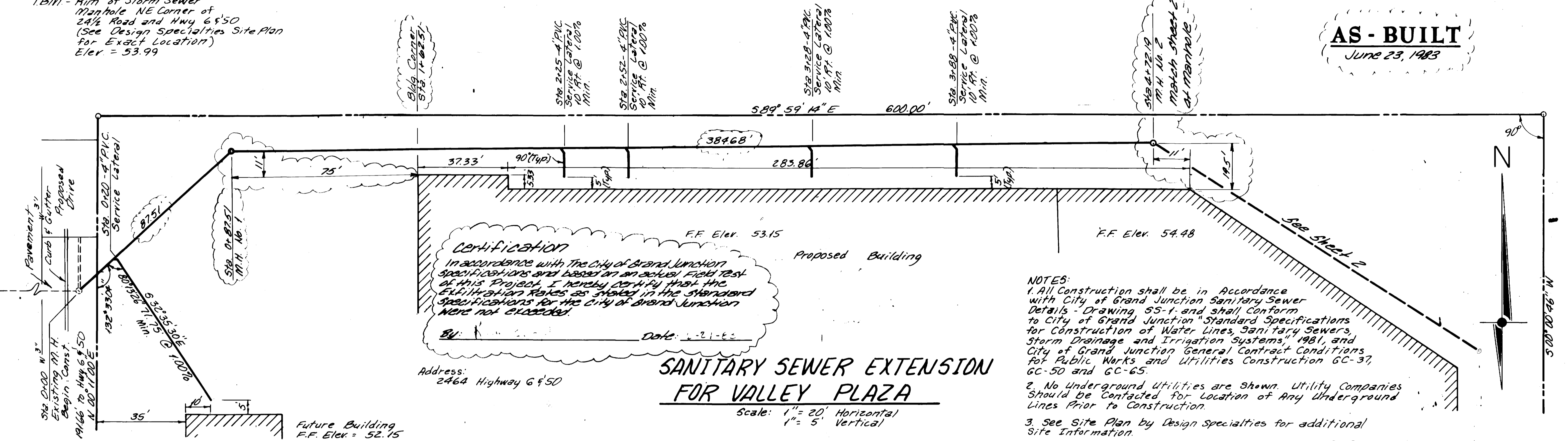


T.B.M. - Rim of Storm Sewer Manhole NE Corner of 24 1/2 Road and Hwy 6 & 50 (See Design Specialties Site Plan for Exact Location) Elev = 53.99

AS - BUILT
June 23, 1983

24 1/2 ROAD



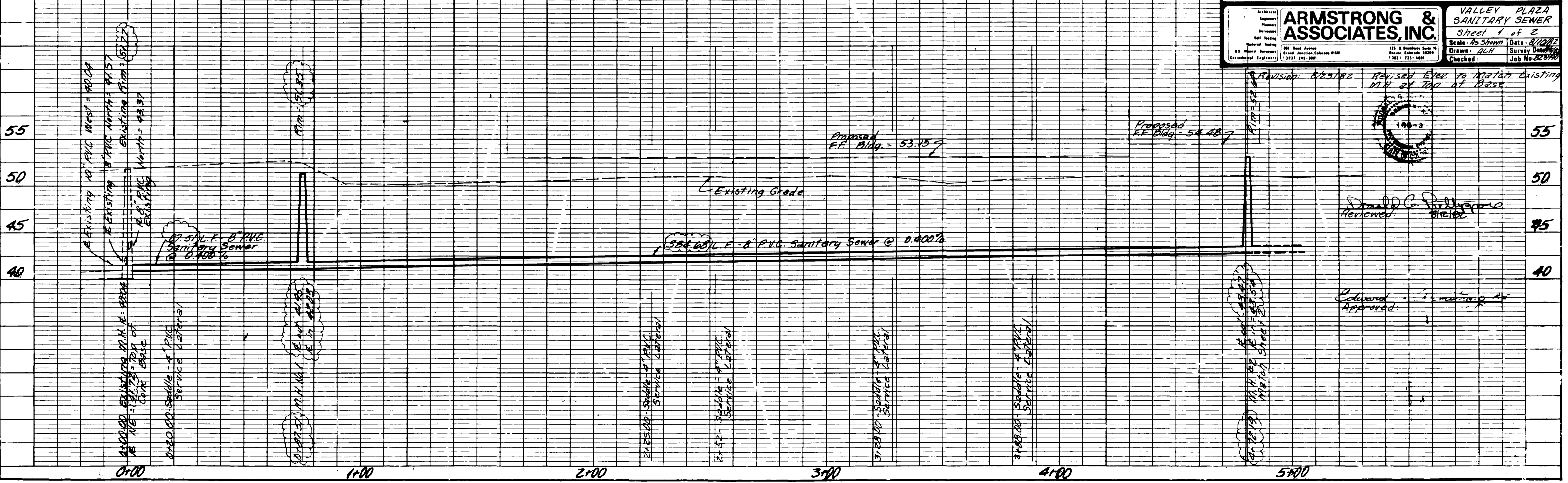
- NOTES:**
- All Construction shall be in Accordance with City of Grand Junction Sanitary Sewer Details - Drawing SS-1 and shall conform to City of Grand Junction "Standard Specifications for Construction of Water Lines, Sanitary Sewers, Storm Drainage and Irrigation Systems," 1981, and City of Grand Junction General Contract Conditions for Public Works and Utilities Construction GC-37, GC-50 and GC-65.
 - No Underground Utilities are shown. Utility Companies should be contacted for location of Any Underground Lines Prior to Construction.
 - See Site Plan by Design Specialties for additional Site Information.

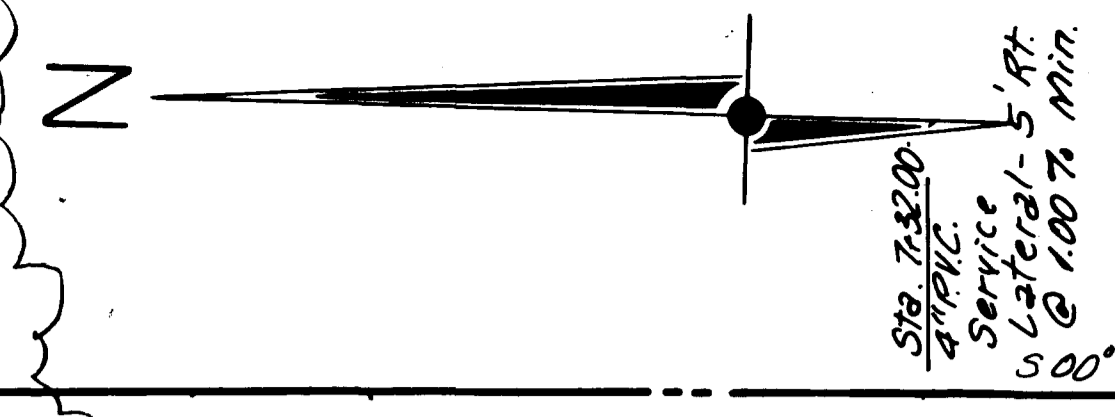
SANITARY SEWER EXTENSION FOR VALLEY PLAZA

Scale: 1" = 20' Horizontal
1" = 5' Vertical

Address: 2464 Highway 6 & 50

Architect Engineer Planner Surveyor Soil Tester Material Tester U.S. Patent Surveyor Geotechnical Engineer	ARMSTRONG & ASSOCIATES, INC. 101 Reed Avenue Grand Junction, Colorado 81501 (303) 249-3601	VALLEY PLAZA SANITARY SEWER Sheet 1 of 2 Scale: As Shown Date: 8/10/82 Drawn: ALH Survey Date: 5/82 Checked: _____ Job No: 823570
---	--	---





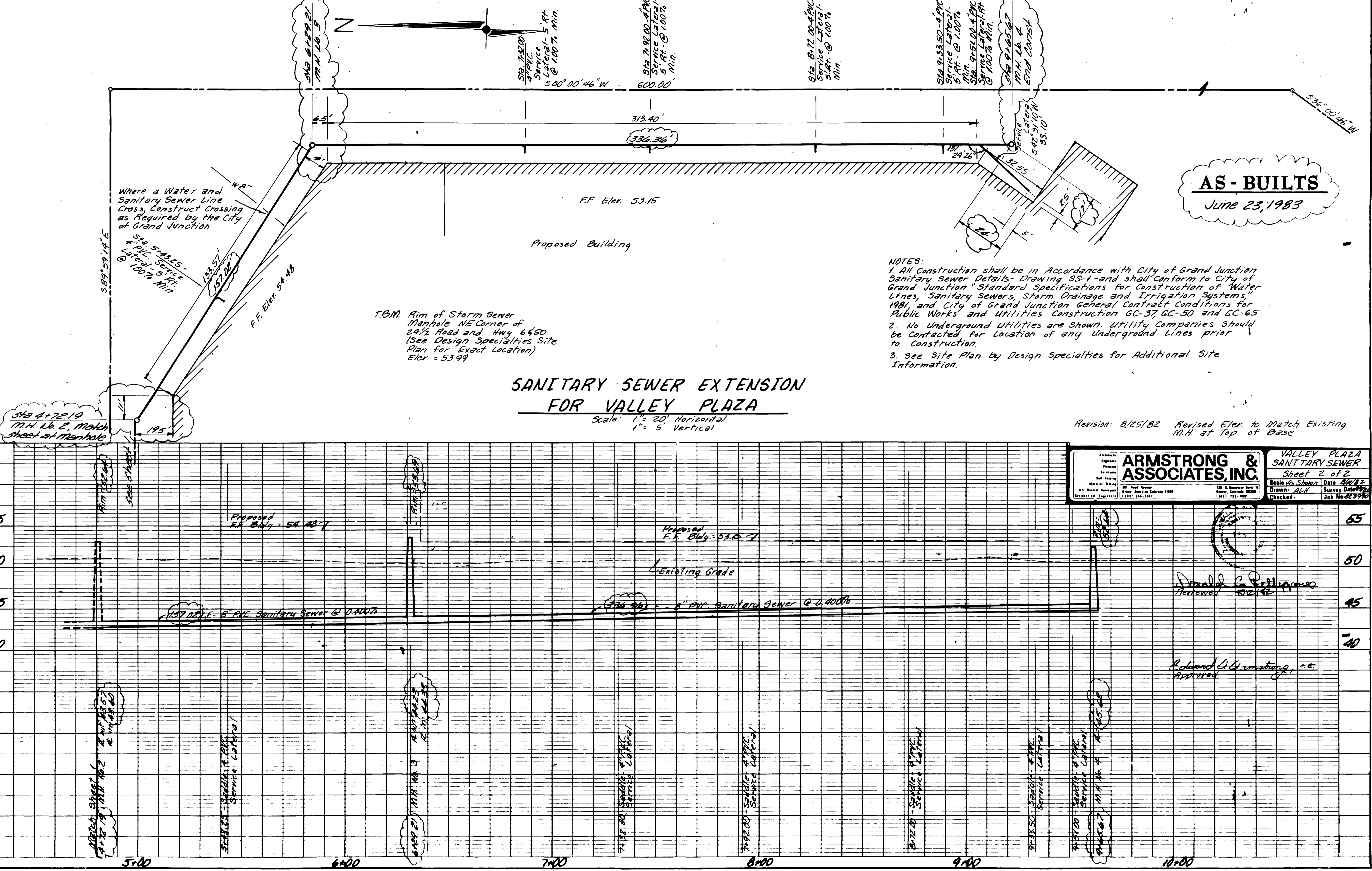
AS - BUILTS
 JUNE 23, 1983

- NOTES:
1. All Construction shall be in Accordance with City of Grand Junction Sanitary Sewer Details- Drawing SS-1 and shall conform to City of Grand Junction "Standard Specifications for Construction of Water Lines, Sanitary Sewers, Storm Drainage and Irrigation Systems," 1981, and City of Grand Junction General Contract Conditions for Public Works and Utilities Construction GC-37, GC-50 and GC-65.
 2. No Underground Utilities are Shown. Utility Companies should be contacted for location of any underground lines prior to construction.
 3. See Site Plan by Design Specialties for Additional Site Information.

**SANITARY SEWER EXTENSION
 FOR VALLEY PLAZA**

Scale: 1" = 20' Horizontal
 1" = 5' Vertical

Revision: 8/25/82 Revised Eler. to Match Existing M.H. at Top of Base



Architect Engineer Planner Surveyor Soil Testing Material Testing U.S. Measur. Surveyors Geotechnical Engineers	ARMSTRONG & ASSOCIATES, INC. 801 Wood Avenue Grand Junction, Colorado 81501 (303) 245-3881	726 S. Broadway Suite 101 Grand Junction, Colorado 81501 (303) 733-6881	VALLEY PLAZA SANITARY SEWER Sheet 2 of 2 Scale As Shown Date: 8/25/82 Drawn: AUL Survey Date: 8/25/82 Checked: Job No. 25392
--	--	---	--

Donald C. Phillips
 Reviewed 8/25/82

Robert L. G. ...
 Approved