

CONTRACTOR TO VERIFY LOCATIONS OF EXISTING UTILITIES AND SANITARY/STORM SEWER PRIOR TO CONSTRUCTION.

EXISTING MANHOLE @
ROOD AVE. & SPRUCE STREET
RIM = 4572.46
INV. = 4564.58

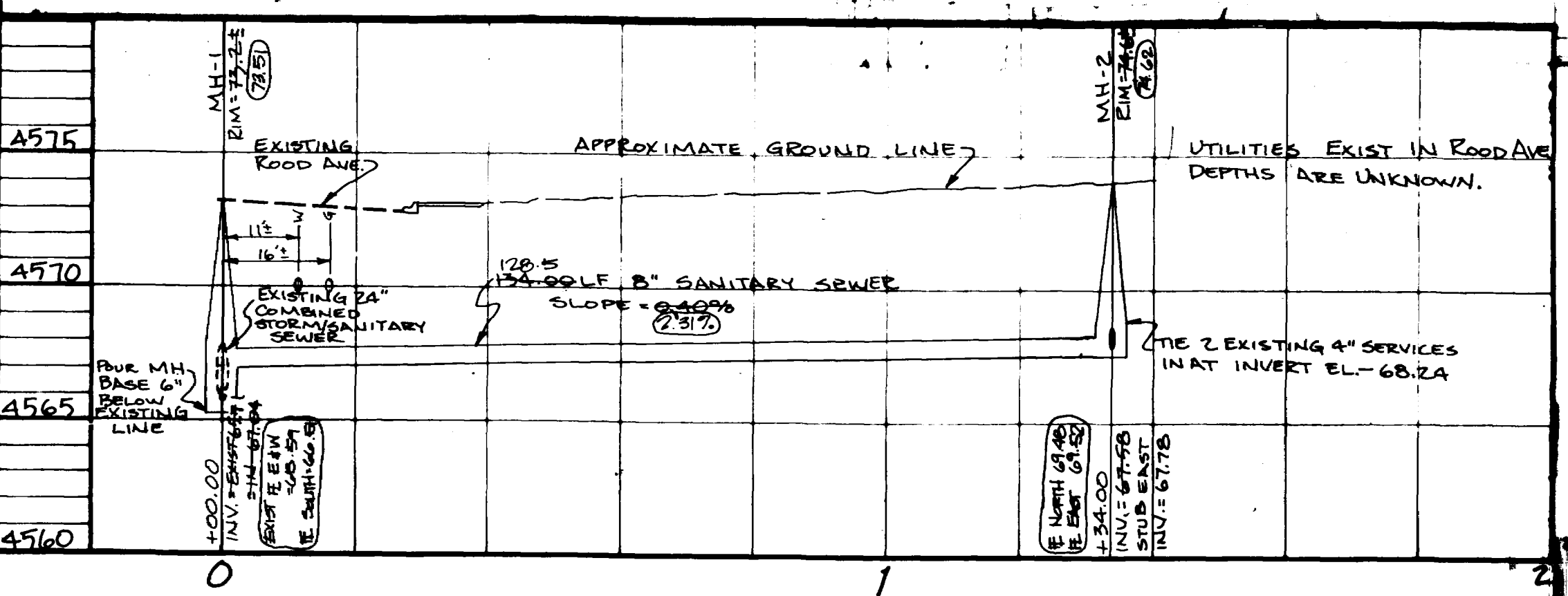
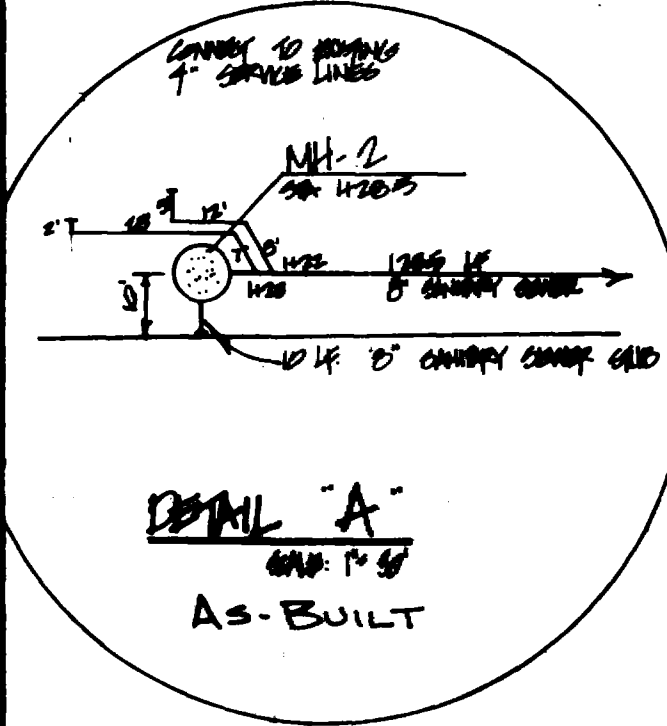
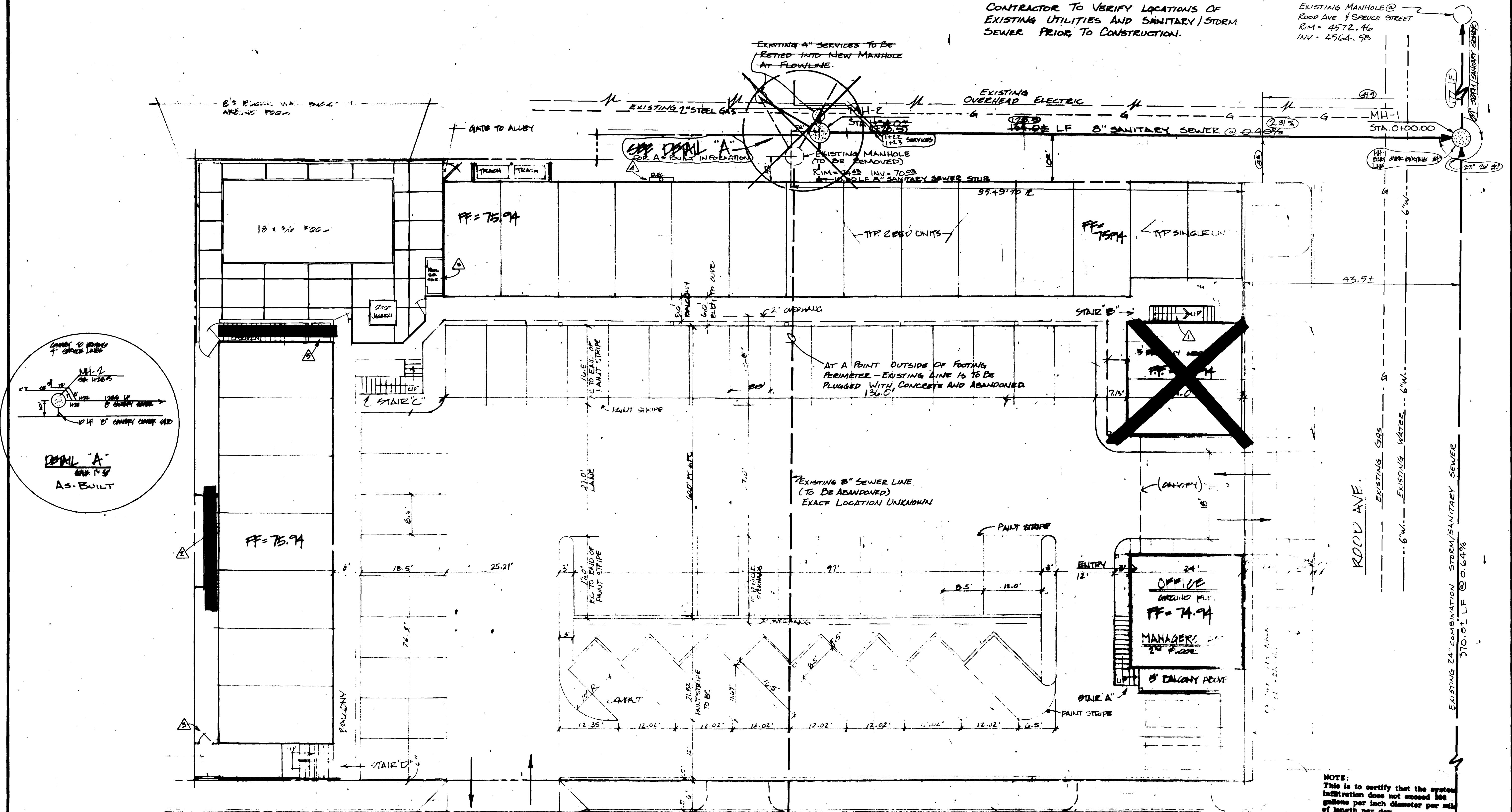
CHECKED	
DATE	MARCH 1983
SCALE	
REVISIONS	BY
GENERAL NOTES	WML
SEE CITY 4-24	
A-28-83	2ME
AS BUILT	T-108-83

PARAGON ENGINEERING, INC.



TWO RIVERS INN
SANITARY SEWER PLAN

SHEET	16
OF SHEETS	

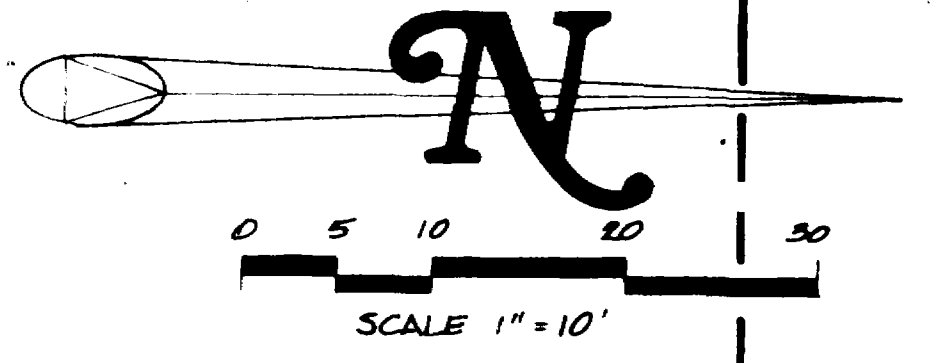


- FIRST ST.**
- THE CONTRACTOR SHALL CONTACT THE CITY PUBLIC WORKS SUPERINTENDENT (244-1567) PRIOR TO ANY CUTTING IN ROOD AVENUE. ALL PAVEMENT AND/OR CONCRETE DISTURBED IN ROOD AVENUE AND/OR THE ALLEY SHALL BE REPLACED IN KIND TO CITY SPECIFICATIONS.
 - THE CONTRACTOR SHALL CONTACT THE CITY UTILITIES SUPERINTENDENT (244-1568) PRIOR TO ANY DISBURBANCE OF THE EXISTING SEWERS. EXISTING FLOWS IN THE SEWERS MUST BE MAINTAINED AT ALL TIMES.
 - THE CONTRACTOR SHALL ERECT AND MAINTAIN PROPER BARRICADES AROUND WORK IN ROOD AVENUE IN CONFORMANCE WITH THE MANUAL OF UNIFORM TRAFFIC CONTROL DEVICES.

ALL SEWER CONSTRUCTION SHALL BE IN ACCORDANCE WITH CITY OF GRAND JUNCTION STANDARD SANITARY SEWER DETAILS DRAWING 85-1 AND SHALL CONFORM TO CITY OF GRAND JUNCTION STANDARD SPECIFICATIONS FOR CONSTRUCTION OF SEWERS, SANITARY SEWERS, STORM DRAINAGE AND IRRIGATION SYSTEMS 1981, AND CITY OF GRAND JUNCTION STANDARD CONDITIONS FOR PUBLIC WORKS AND UTILITIES CONSTRUCTION SC-49, SC-50 AND SC-63.

NOTE: This is to certify that the system infiltration does not exceed 100 gallons per inch diameter per mile of length per day.

AS BUILT DRAWINGS

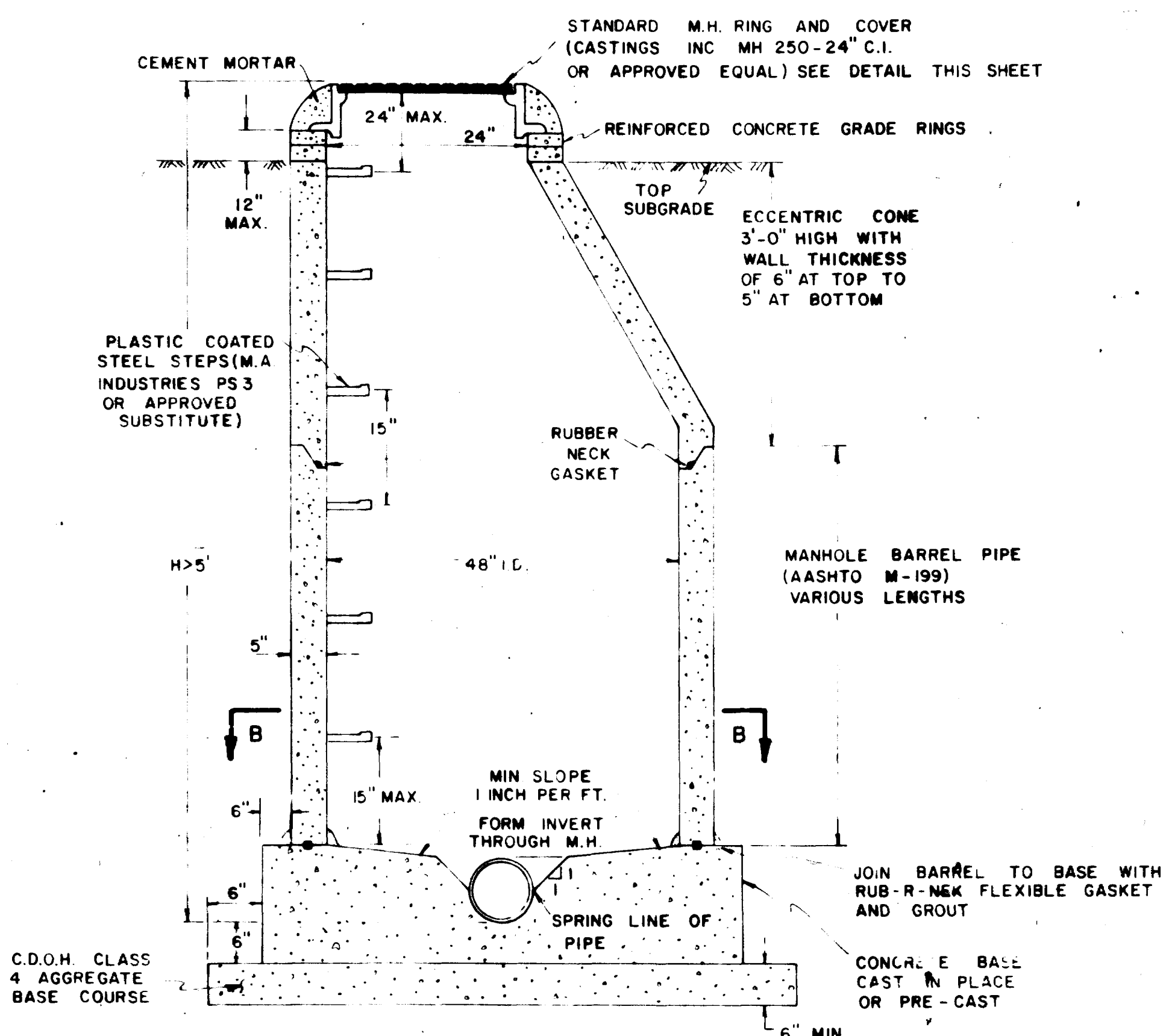


EXISTING MANHOLE @
RIM = 4575.88
INV. = 4566.96

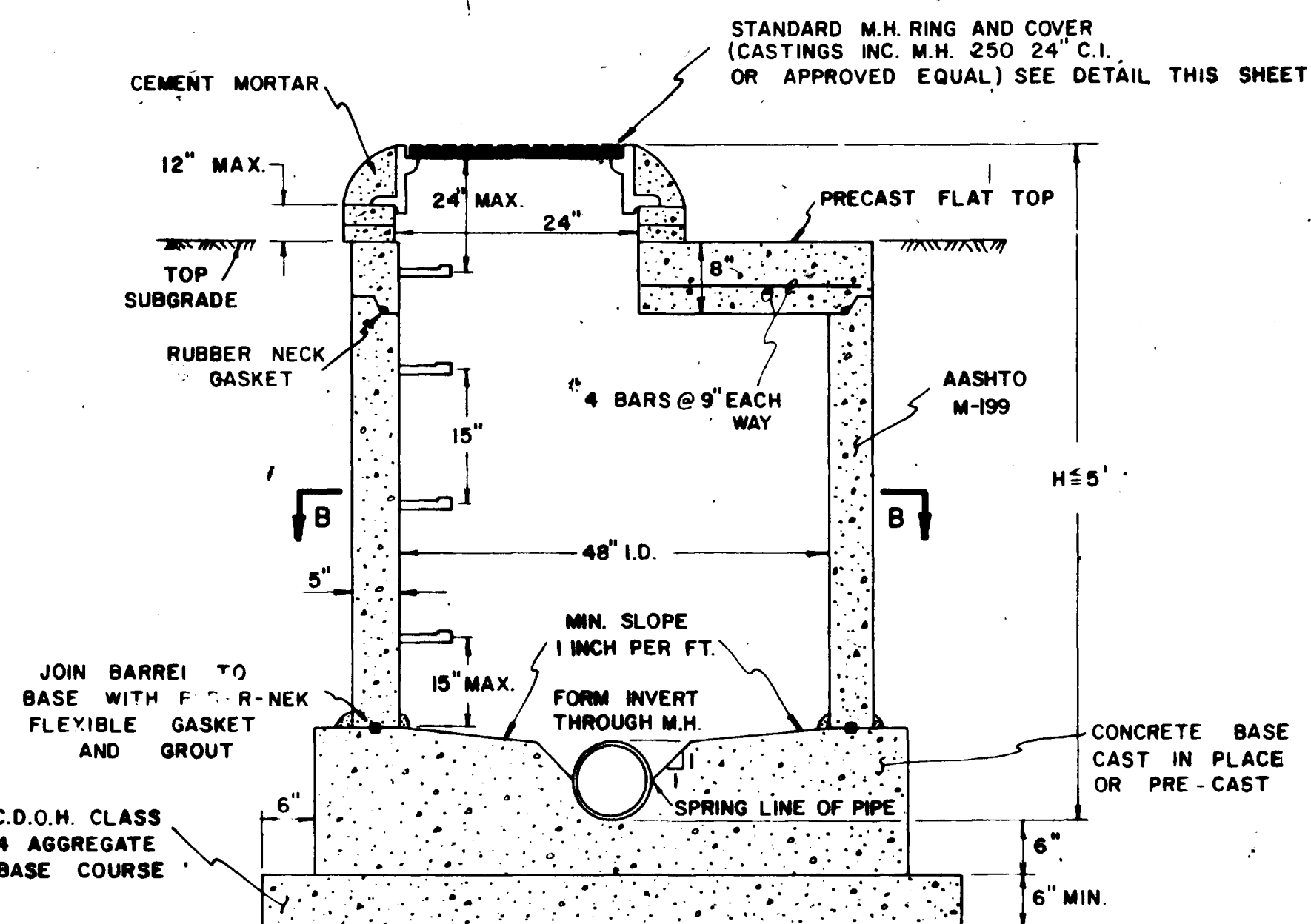
Paragon Engineering, Inc. is not responsible for any mechanical or electrical equipment not shown on these drawings. The contractor shall verify all dimensions on site.

MANHOLE NOTES

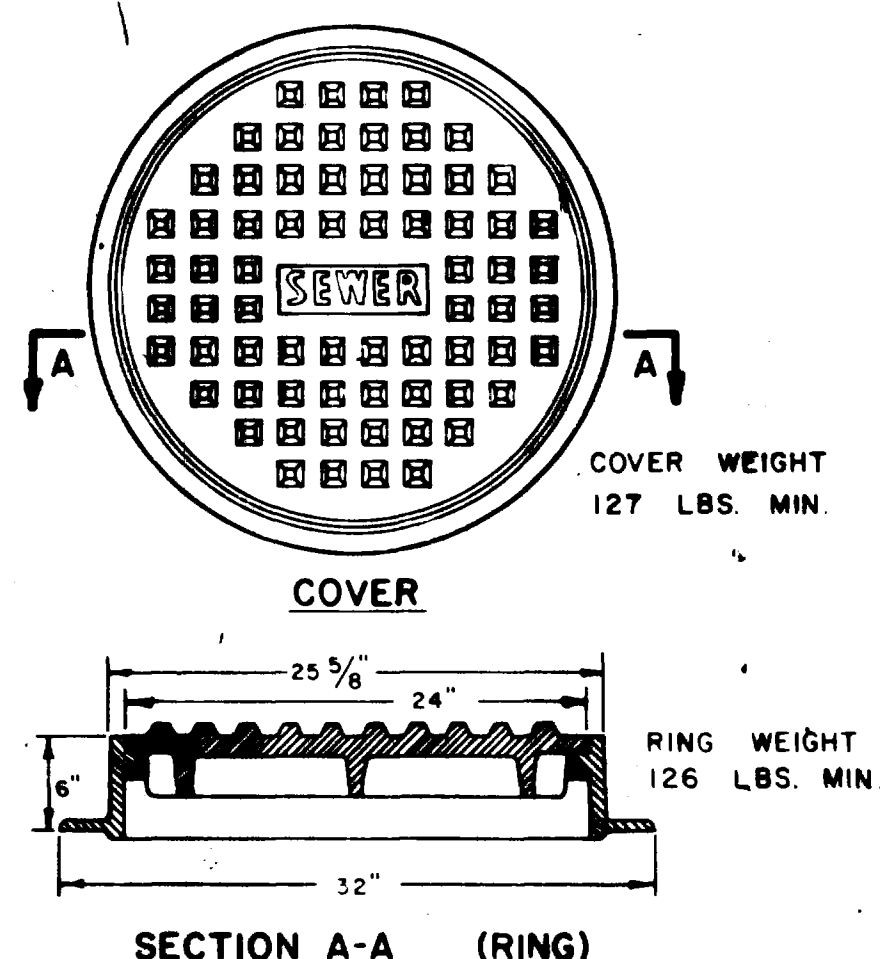
1. CONCRETE SHALL BE COLORADO DIVISION OF HIGHWAYS CLASS "B" (SECTION 601.02).
2. ALL CEMENT USED IN MORTAR, CONCRETE BASES, GRADE RINGS, RISER SECTIONS, CONES, AND FLAT TOPS, FOR SANITARY SEWER MANHOLES, SHALL BE TYPE I OR MODIFIED TYPE II PORTLAND CEMENT WITH LESS THAN 5% TRICALCIUM ALUMINATE.
3. MANHOLE RISER SECTIONS, CONES, FLAT TOPS, AND GRADE RINGS SHALL BE PRECAST REINFORCED CONCRETE CONFORMING TO ASTM C-478 OR AASHTO M-199.



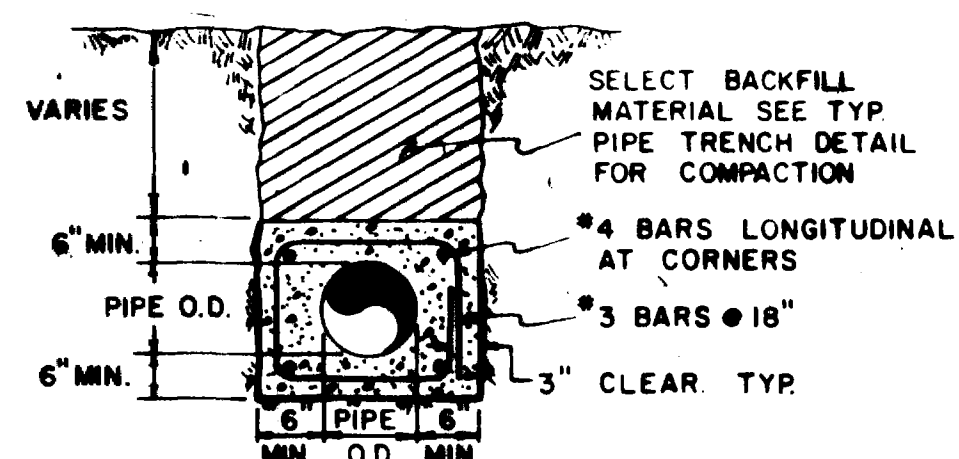
STANDARD MANHOLE



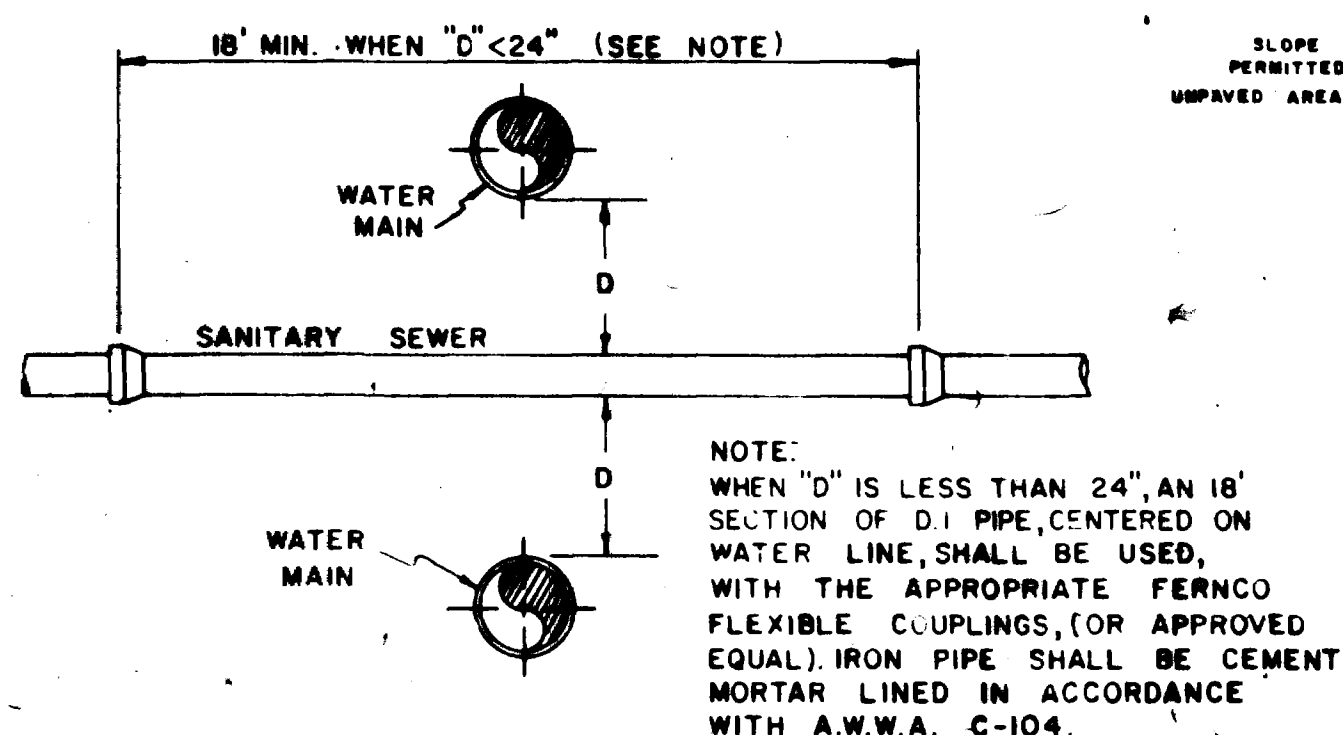
STANDARD SHALLOW MANHOLE



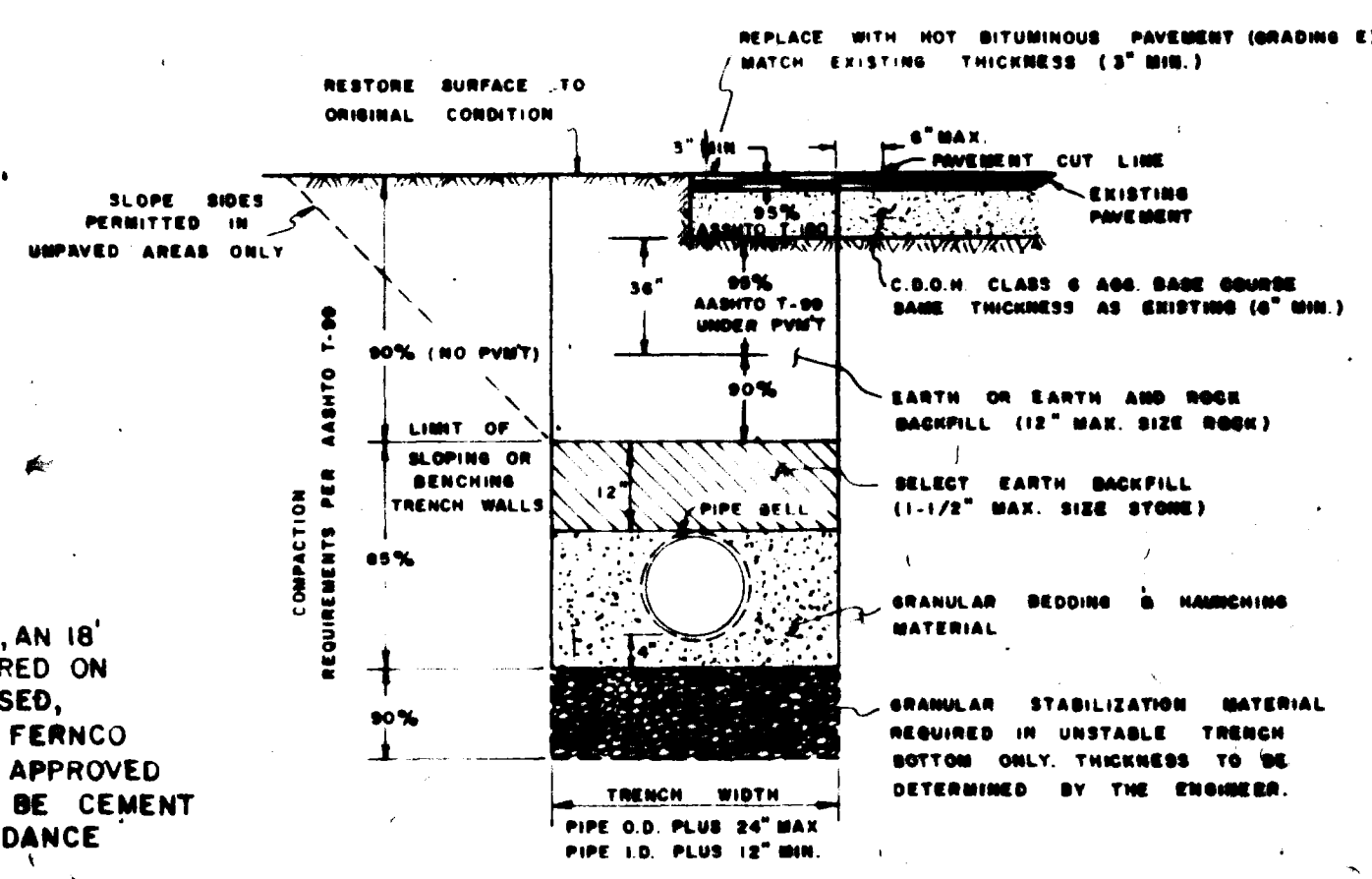
STANDARD CAST IRON MANHOLE RING & COVER



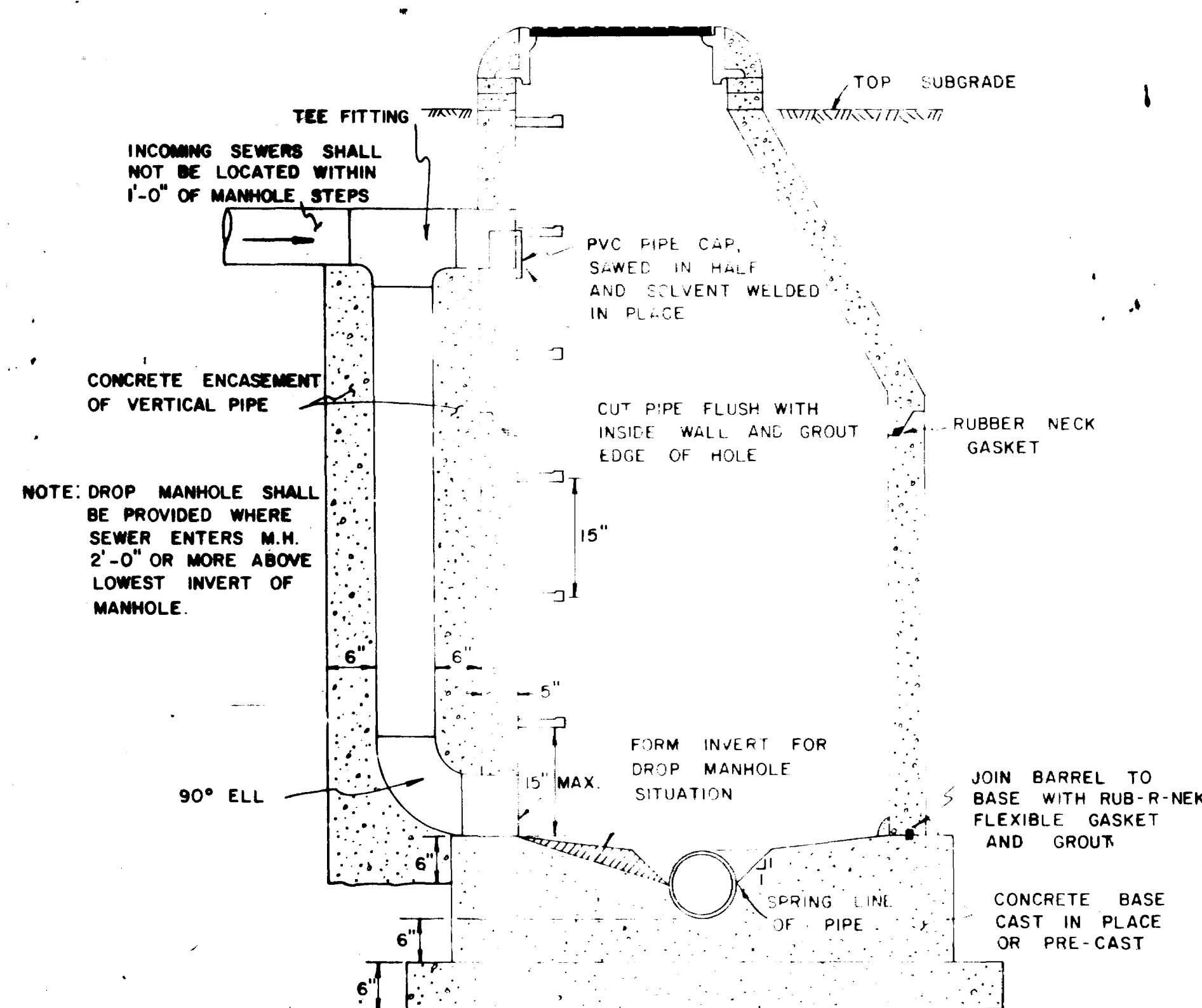
CONCRETE ENCASEMENT



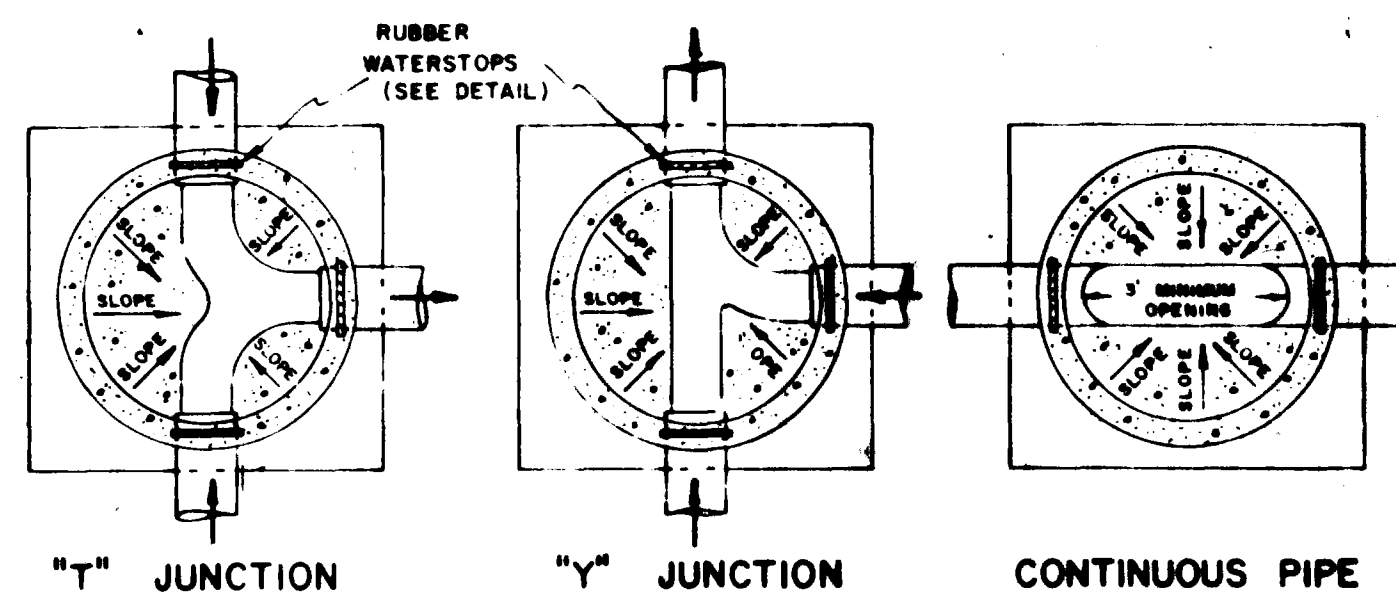
SANITARY SEWER - WATER MAIN CROSSING



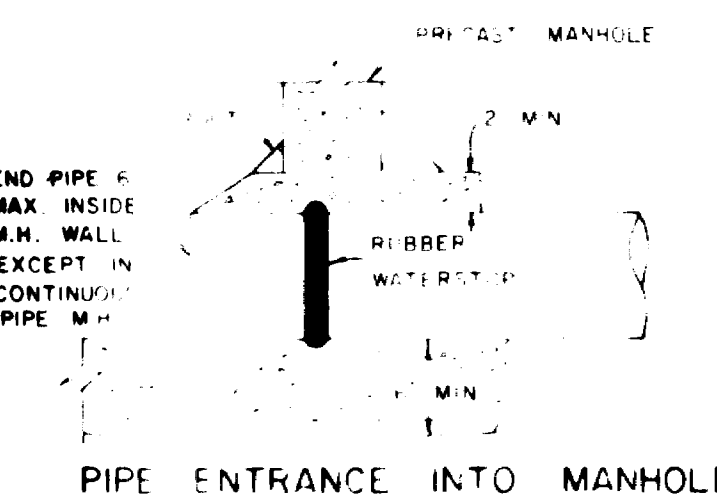
TYPICAL TRENCH



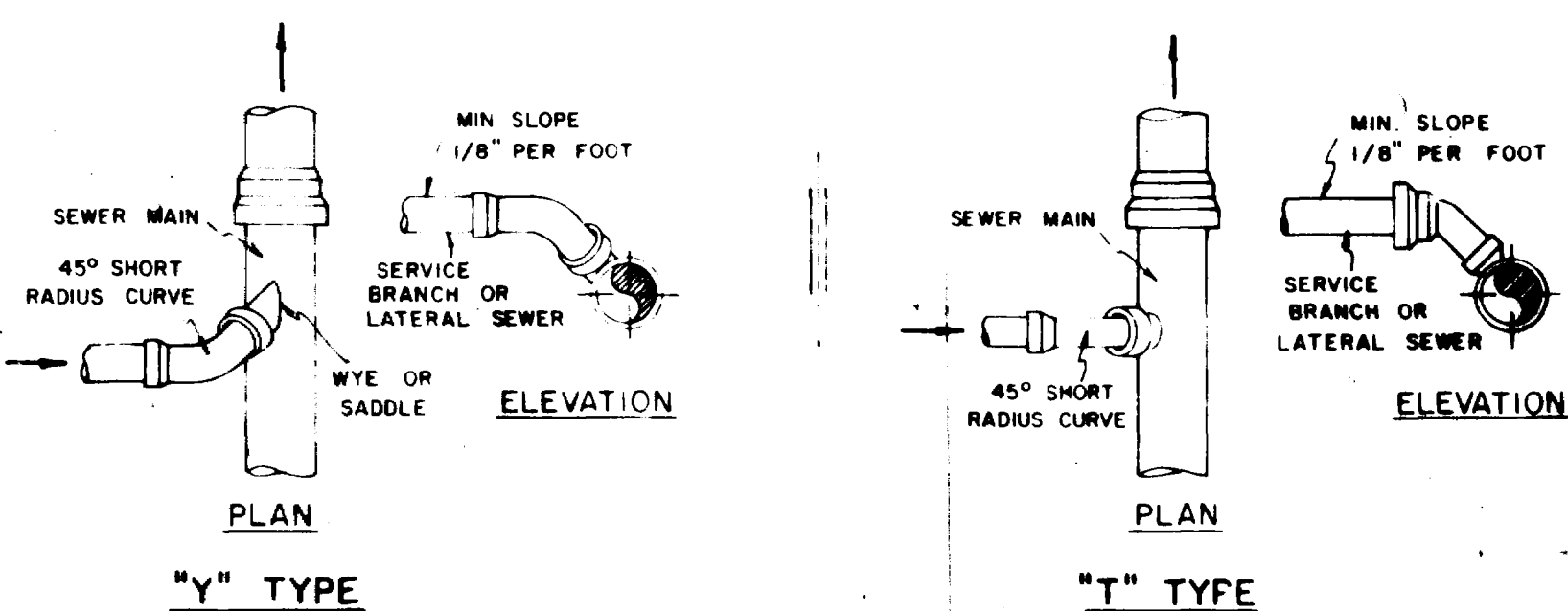
DROP MANHOLE



SECTION B-B



PIPE ENTRANCE INTO MANHOLE



SERVICE CONNECTIONS

GENERAL SEWER NOTES

1. SEWER MAINS AND APPURTENANCES SHALL BE CONSTRUCTED IN ACCORDANCE WITH THESE PLANS AND THE CURRENT SPECIFICATIONS OF THE CITY OF GRAND JUNCTION.
2. ANY "BREAK" IN EXISTING MANHOLES TO EXISTING INSTALLATIONS SHALL BE MADE IN THE PRESENCE OF THE ENGINEER OR HIS REPRESENTATIVE.
3. MINIMUM COVER OVER MANHOLES IN PIPE ZONE SHALL BE 90%.
4. THE CONTRACTOR SHALL BE RESPONSIBLE FOR LOCATING AND PROTECTING ALL BURIED UTILITIES.
5. THE CONTRACTOR IS TO SET ALL MANHOLE RINGS A MINIMUM OF 15 FEET ABOVE EXISTING GRADE ON ALL MANHOLES AND LOCATED IN EXISTING OR PROPOSED PAVED STREETS.
6. DUE TO CURRENT MESA COUNTY ROAD DEPARTMENT POLICIES, ANY ASPHALT REMOVED PARALLEL TO THE EDGE OF AN EXISTING PAVED ROAD SHALL BE MORE THAN 20 LINEAL FEET WILL REQUIRE ASPHALT REPLACEMENT TO THE CENTERLINE OF THE EXISTING PAVED ROAD. WHEN EXISTING PARALLEL TO THE EDGE OF AN EXISTING PAVED ROAD THE CONTRACTOR SHOULD MAKE EVERY EFFORT TO MINIMIZE THE DISTURBANCE TO THE EXISTING PAVED SURFACE.

NOTES:

1. Paragon Engineering, Inc. is not responsible for any mechanical or electrical drawings for this Hotel.
2. Minimum construction standards will meet Uniform Building Code.
3. Do not scale drawings, use written dimensions only.

SIEVE SIZE	PERCENT BY WEIGHT PASSING SQUARE MEASH SIZES	
	GRANULAR BEDDING AND HAUNCHING MATERIAL	GRADE STABILIZATION MATERIAL
4 INCH	100	100
1 INCH	100	100
No. 200	0-12	0-15

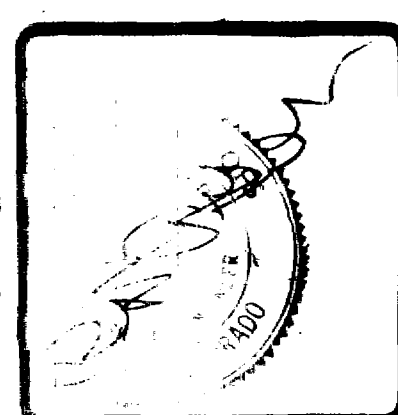
ALL BACKFILL MATERIAL SHALL BE PLACED FULL WIDTH IN 12" MAX. LIFTS AND COMPACTED TO THE MINIMUM RELATIVE DENSITIES SHOWN.

AS BUILT DRAWINGS

CHECKED
DATE
MAR 83
SCALE
As Shown

REVISIONS	BY
As Built	T.H. BOGGS

PARAGON ENGINEERING, INC.
2784 Crossroads Blvd., Suite 104
Grand Junction, Colorado 81501
(303) 243-8865



TWO RIVERS INN
SANITARY SEWER DETAILS

SHEET
17
SHEETS