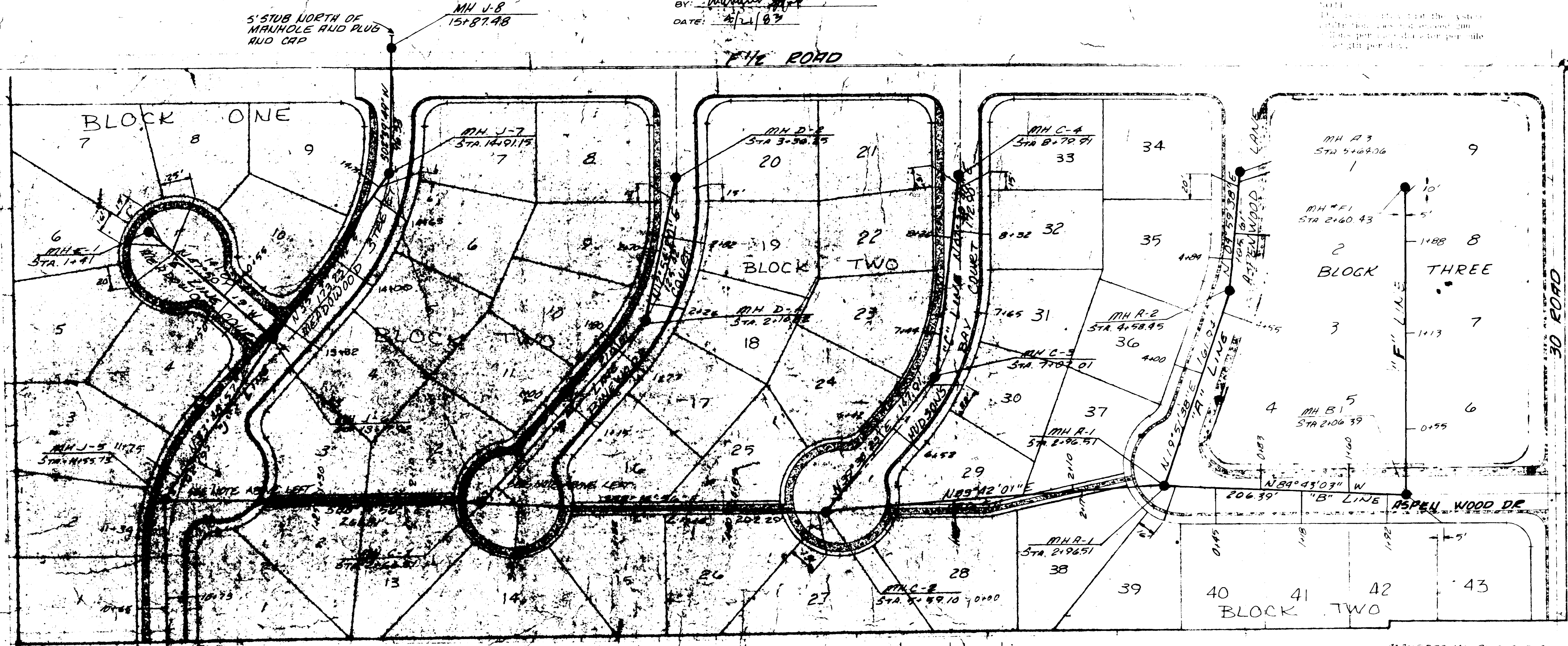


NOTE: I HEREBY STATE TO THE BEST OF MY PROFESSIONAL KNOWLEDGE, BELIEF AND OPINION THAT THE SYSTEM INFILTRATION DOES NOT EXCEED 200 GALLONS PER INCH DIAMETER PER MILE OF LENGTH BETWEEN MH C-1 AND MH D-2 AND THAT THE SERVICE LATERALS ARE LOCATED AS SHOWN ON LOTS 8 THRU 20 INCLUSIVE.

BY: *William H. [Signature]*
DATE: 5/11/87



BENCH MARK
TOP BRGS CAP
ELEV. 4718.84

SCALE 1"=50'

GENERAL NOTES:
1. TOP OF ECCENTRIC CONE TO BE SET AT TOP OF SUBGRADE (STREET CONTRACTOR TO SET RIMS TO FINISHED GRADE OF STREET)
2. ALL CONSTRUCTION TO BE DONE IN ACCORDANCE WITH THE CENTRAL GRAND VALLEY SANITATION DISTRICT SPECIFICATIONS.

QUANTITIES
3531.52 LF 8" SANITARY SEWER
18 STANDARD MANHOLES
62-4" SERVICE LINES

JOIN TO EXISTING MH J-2-Ox. BOW SUB FILING 4 STA 4+36 INV. EL. = 4693.64

