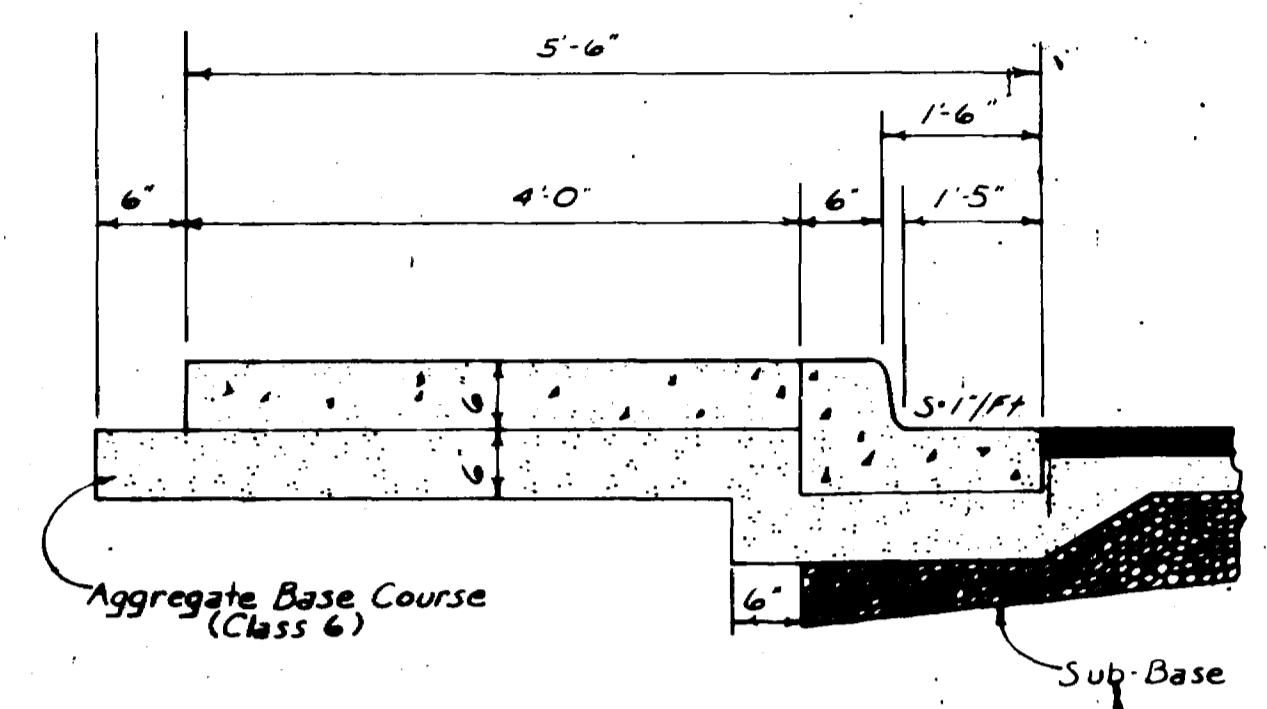
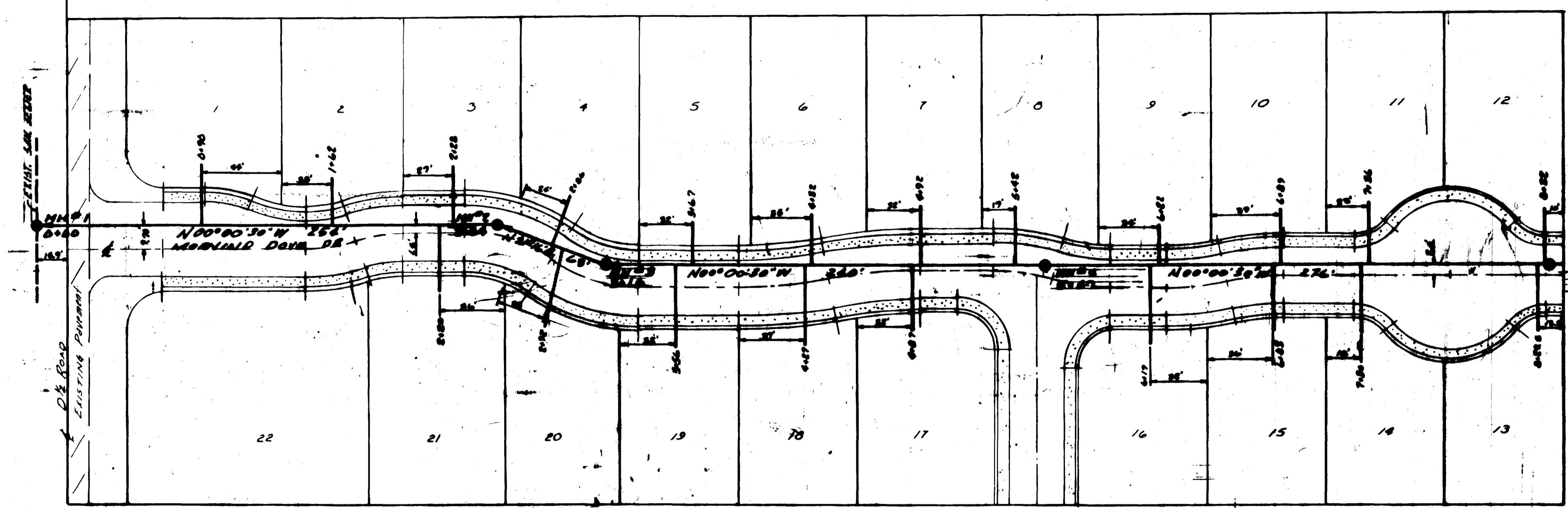
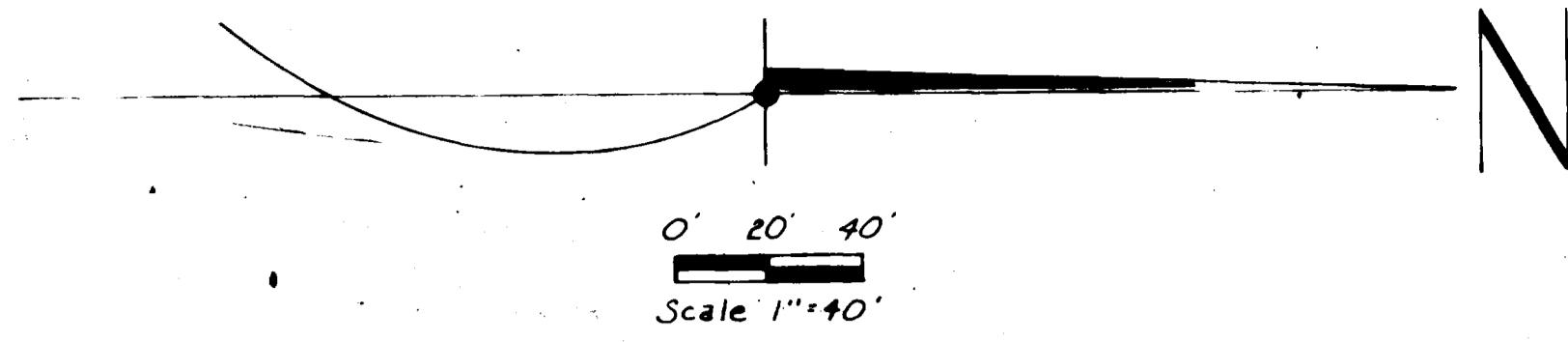
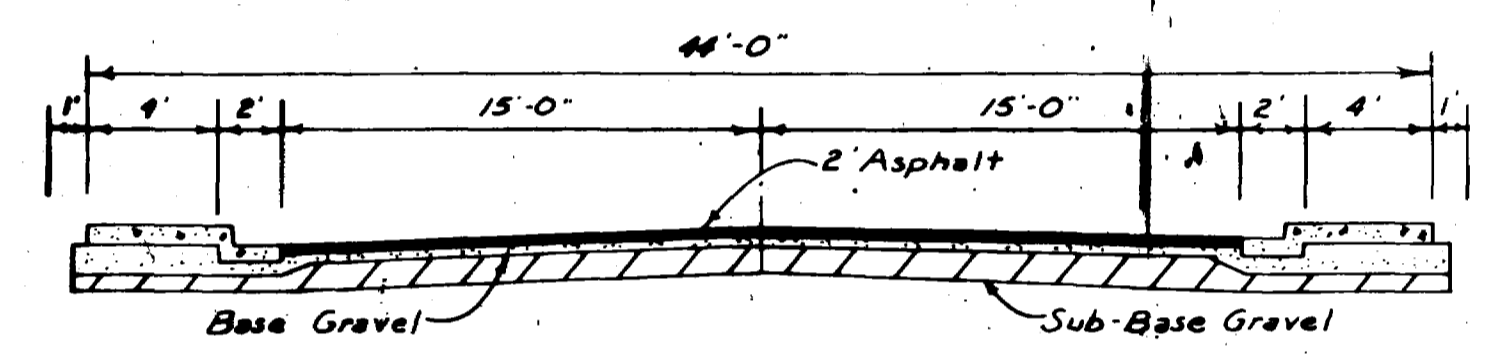


GENERAL NOTES

- THE FOLLOWING SPECIFICATIONS ARE MADE A PART OF THIS CONTRACT
- ALL CURRENT MESA COUNTY STREET SPECIFICATIONS SHALL APPLY
 - NO ROAD CUTS WILL BE MADE AFTER PLACEMENT OF ASPHALT WITHOUT APPROVAL OF MESA COUNTY DEPARTMENT OF STREETS.
 - MANHOLE RIMS TO BE BROUGHT TO GRADE BY PAVING CONTRACTOR AFTER PAVEMENT IS PLACED.
 - CONTRACTOR IS RESPONSIBLE FOR LOCATING & PROTECTING UNDERGROUND UTILITIES
 - SEWER CONTRACTOR TO BRING MANHOLES UP TO BOTTOM OF SUBBASE.
 - FINISH GRADES ARE SHOWN TO BACK SIDEWALK.
 - ALL STATIONING IS TO SURVEY LINE.



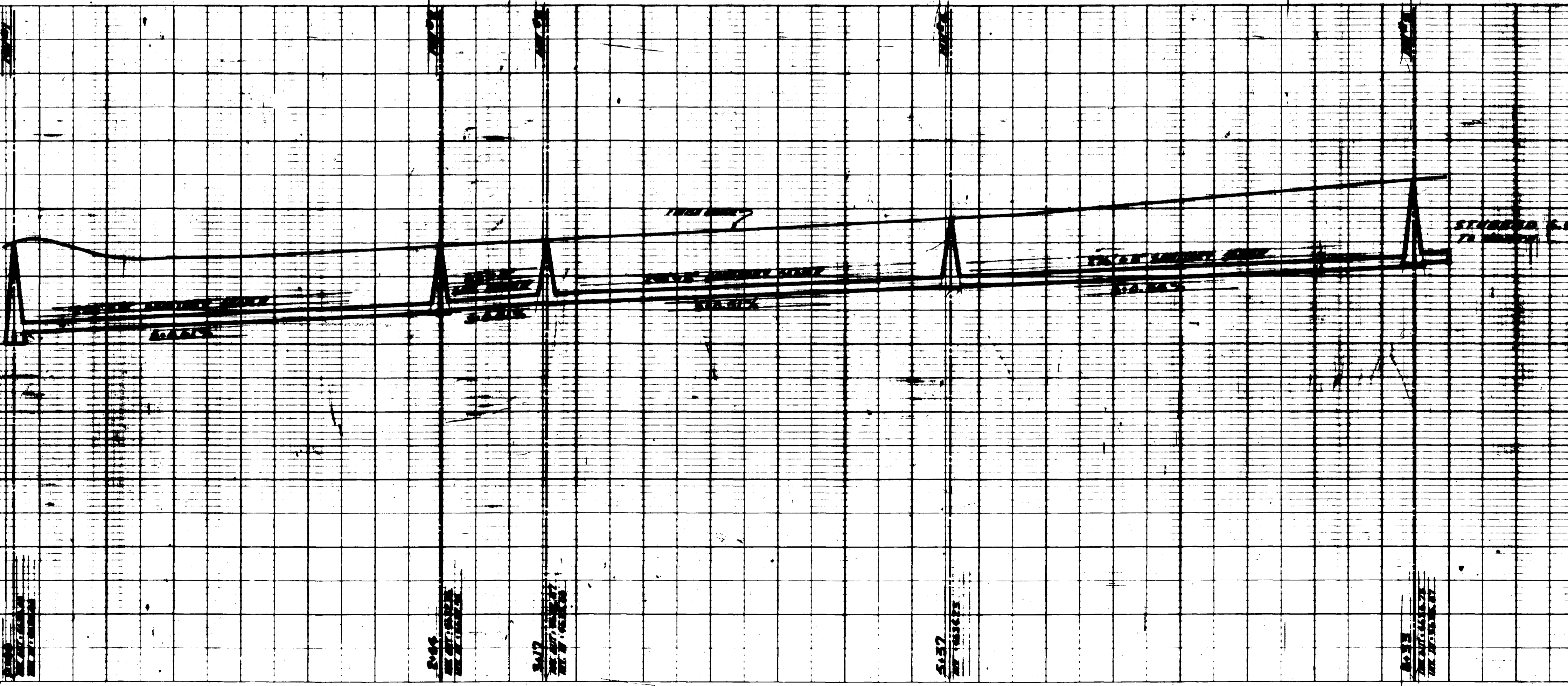
Barrier Curb, Gutter & Sidewalk Detail



Typical 44' Street Section

GENERAL NOTES:

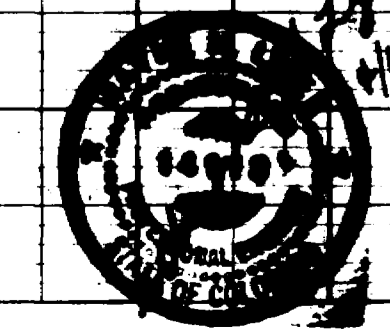
1. THIS SUBDIVISION IS SERVED BY CENTRAL GRAND VALLEY SANITATION DISTRICT.
2. THIS IS TO VERIFY THAT THE SYSTEM INFILTRATION DOES NOT EXCEED 200 GALLONS PER INCH DIAMETER PER MILE OF LENGTH OF PIPE. FIELD INSPECTED APRIL 6, 1983.
3. 8" PVC 45TH 3034D SEWER PIPE INSTALLED.



"AS - BUILTS"

**TORAZ SUBDIVISION
SEWER PLAN & PROFILE**

W. H. LIZER & ASSOCIATES
ENGINEERING & SURVEYING
576 25 ROAD UNIT 8 241-1129
GRAND JUNCTION, COLORADO



PROJECT NO. 82 768 B	DATE OCT 1982	SHEET
-------------------------	------------------	-------