

ARMSTRONG & ASSOCIATES, INC.

1000 West Avenue
Grand Junction, Colorado 81505
(970) 245-2555

Architects
Engineers
Planners
Surveyors
Soil Testing
Salt Testing
Material Testing
U.S. Patent Surveyors
Professional Engineers

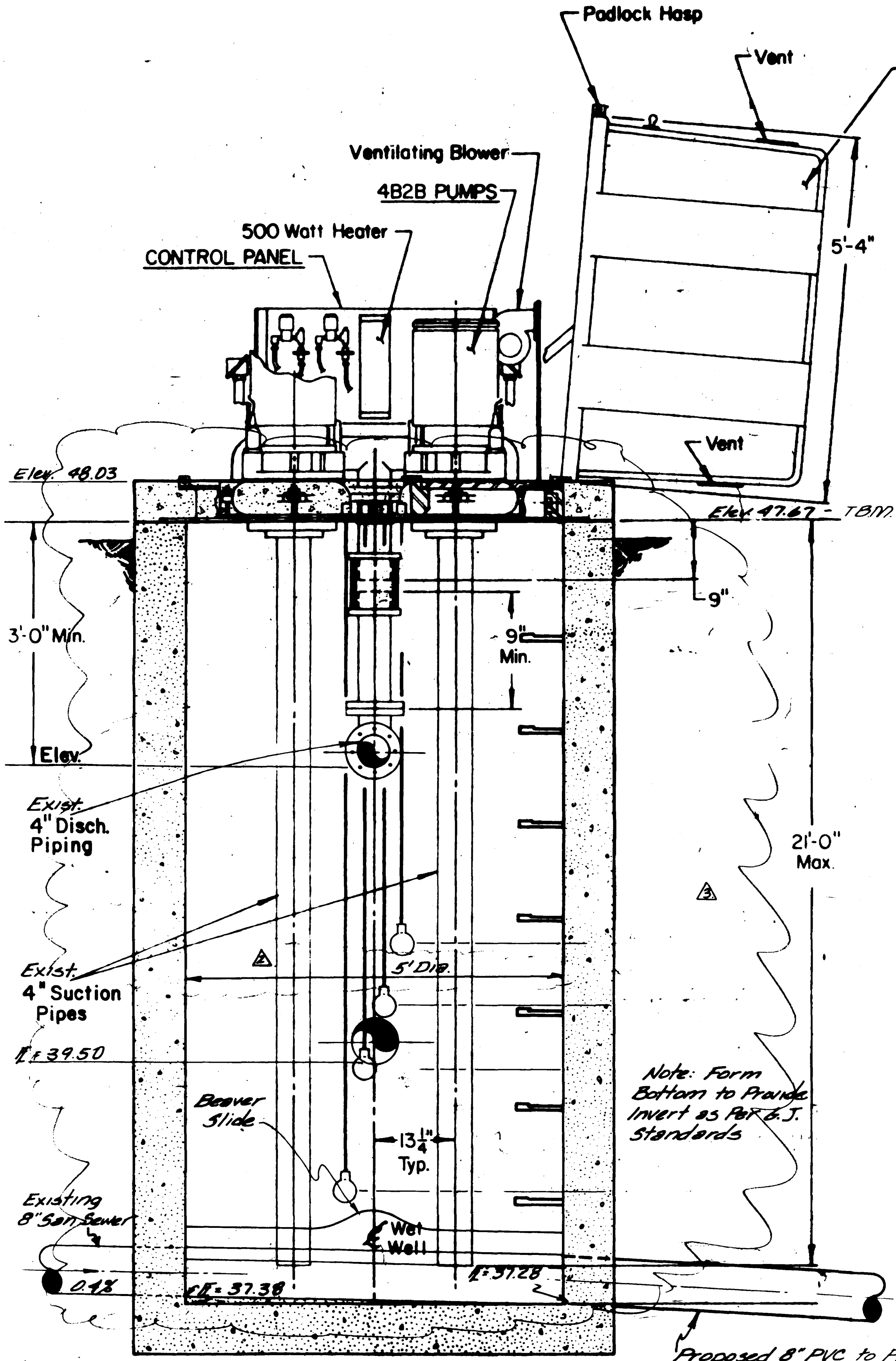
Labelle Lift Station
Rehabilitation

Project No: 834272
Date: 12-8-83
Revision:

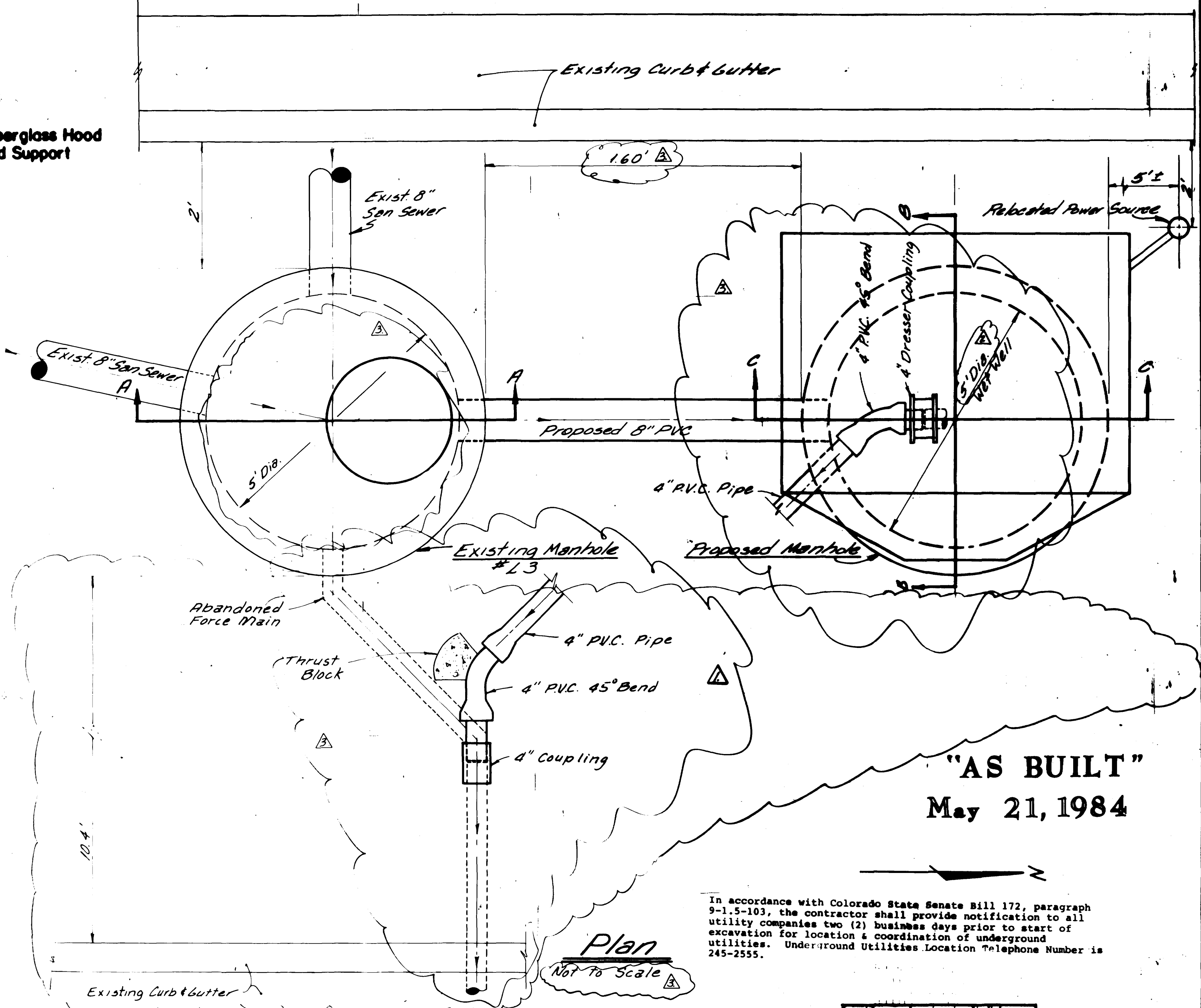
Drawn: RCB
Checked:
Approved:

Plan

Sheet 1 of 2



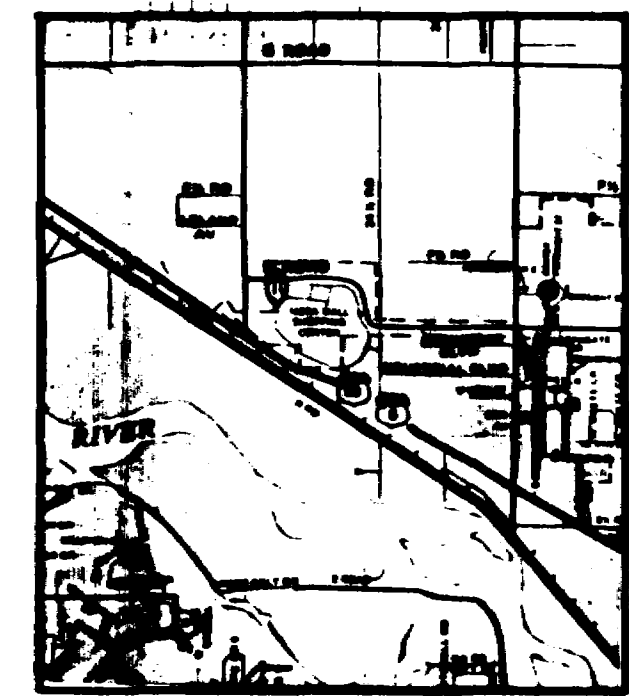
SECTIONAL ELEVATION A-A
Not to Scale
Existing Wet Well



"AS BUILT"
May 21, 1984

In accordance with Colorado State Senate Bill 172, paragraph 9-1.5-103, the contractor shall provide notification to all utility companies two (2) business days prior to start of excavation for location & coordination of underground utilities. Underground Utilities Location Telephone Number is 245-2555.

- Notes:
1. The New Wet Well shall be constructed and the Existing Lift Station Relocated to the New Wet Well. New suction Pipes shall be provided to the Required Lengths. Length of control floats shall be adjusted for Proposed Wet Well.
 2. Electrical Control box shall be relocated.
 3. Contractor shall provide uninterrupted sewage service throughout the Rehabilitation Period.
 4. All construction shall be in accordance with City of Grand Junction Sanitary Sewer details - Drawings SS-1 and shall conform to City of Grand Junction "Standard Specifications for Construction of Water Lines, Sanitary Sewers, storm Drainage and Irrigation Systems", 1981, and City of Grand Junction, General Contract Conditions for Public Works and Utilities Construction GC-37, GC-50 and GC-65.



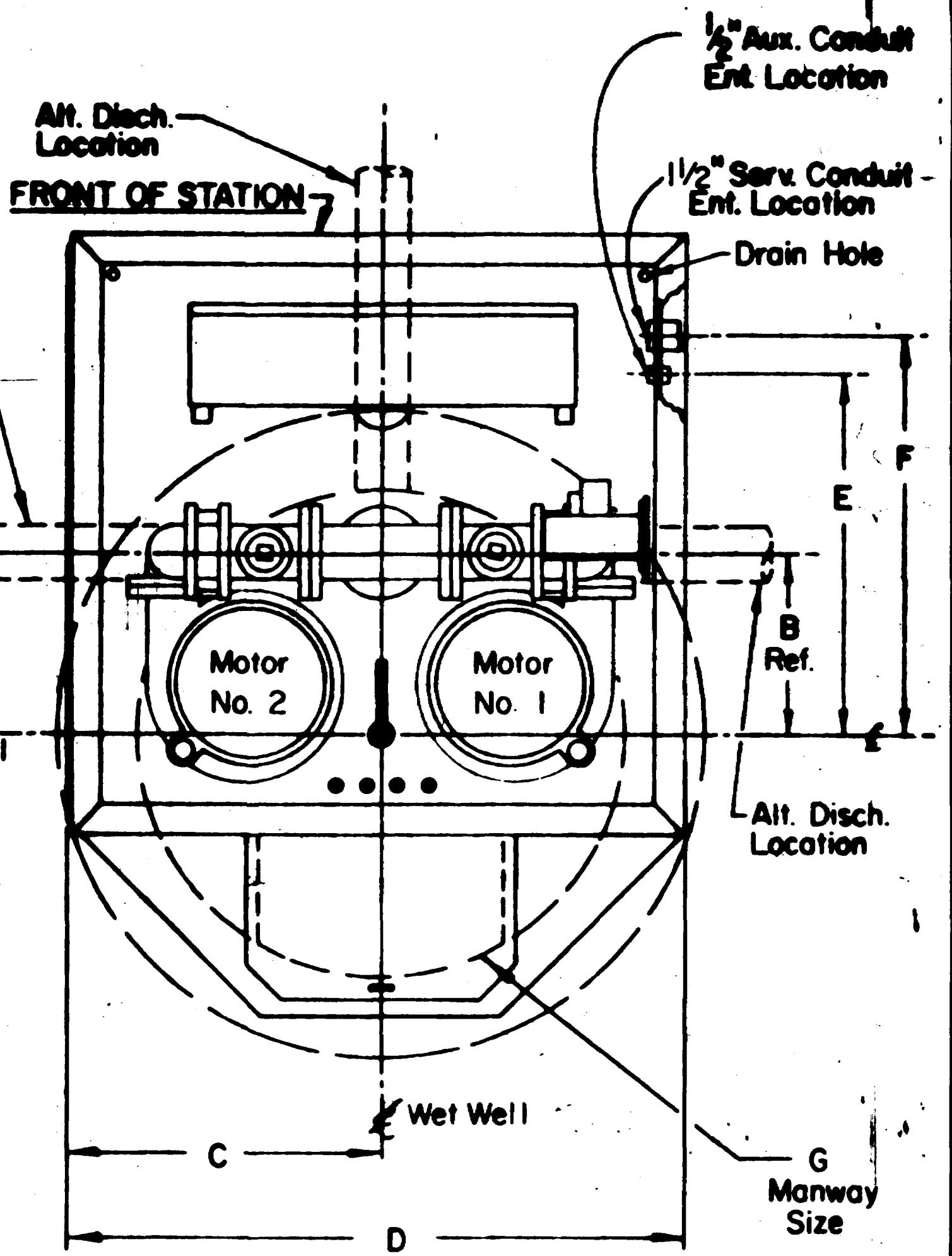
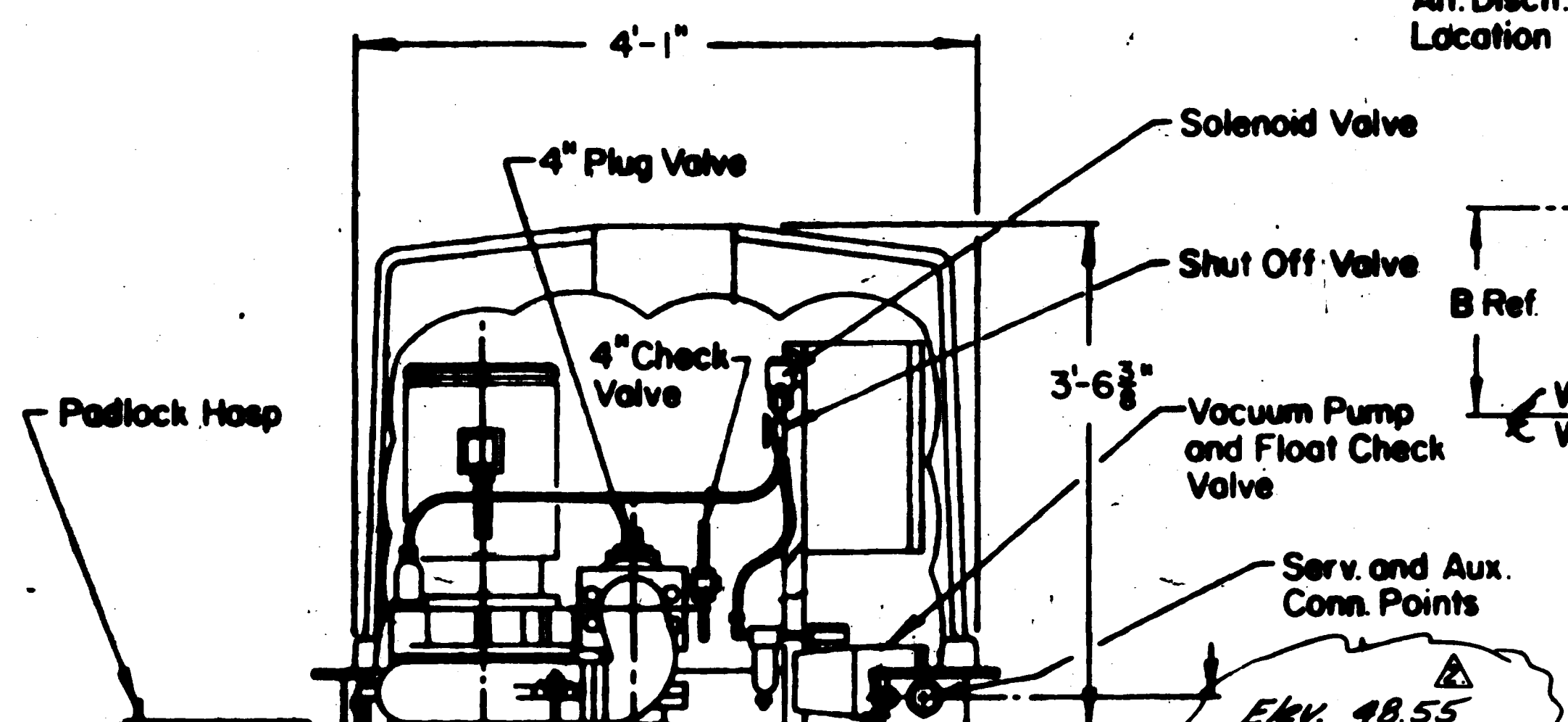
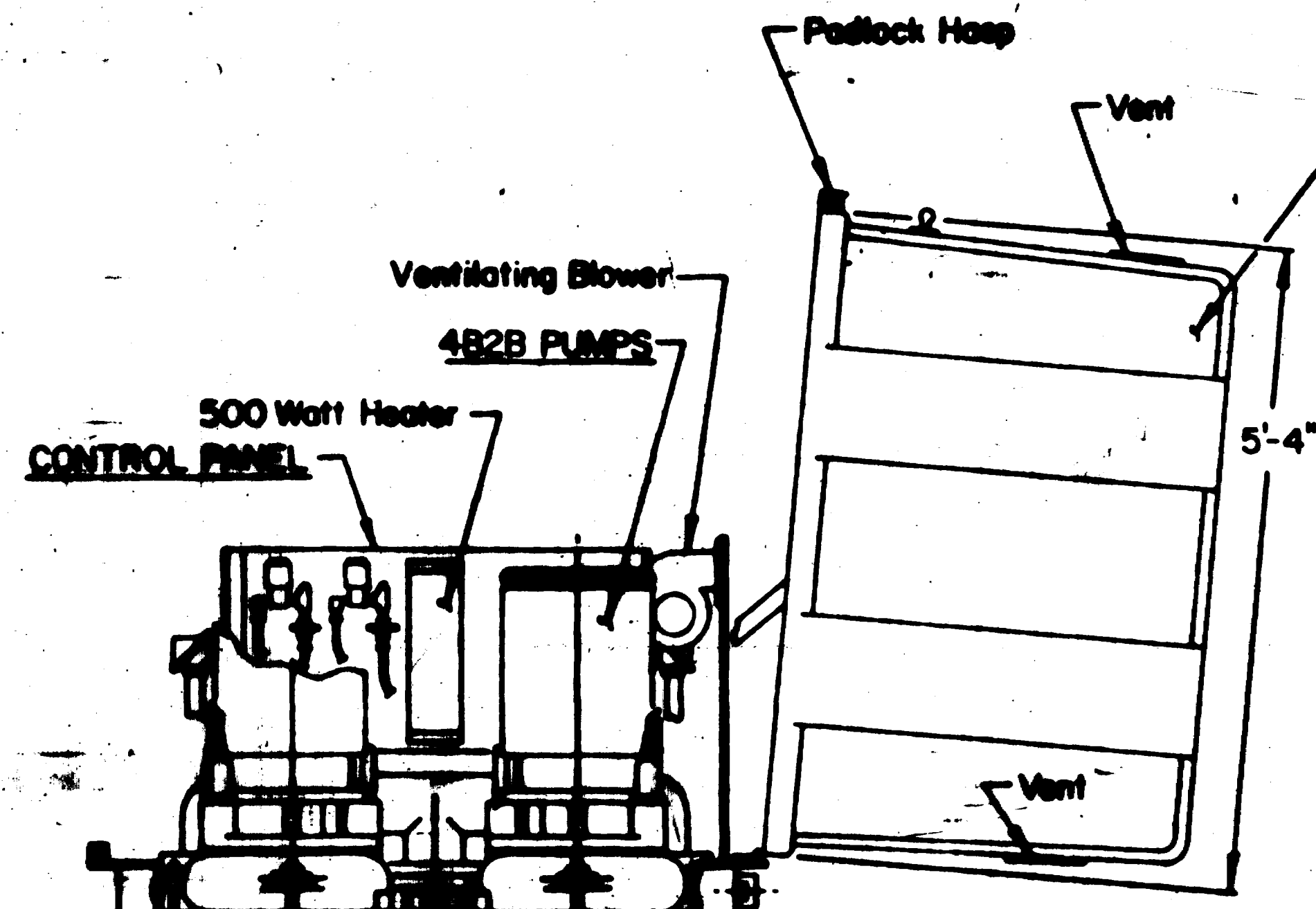
Location Map

NO.	REVISION DESCRIPTION	DATE	BY
△	Revised Prop. 4" CI Force Main	2-13-84	AM
△	Revised Manhole Diameter	2-15-84	AH
△	"As Built"	5-21-84	AH

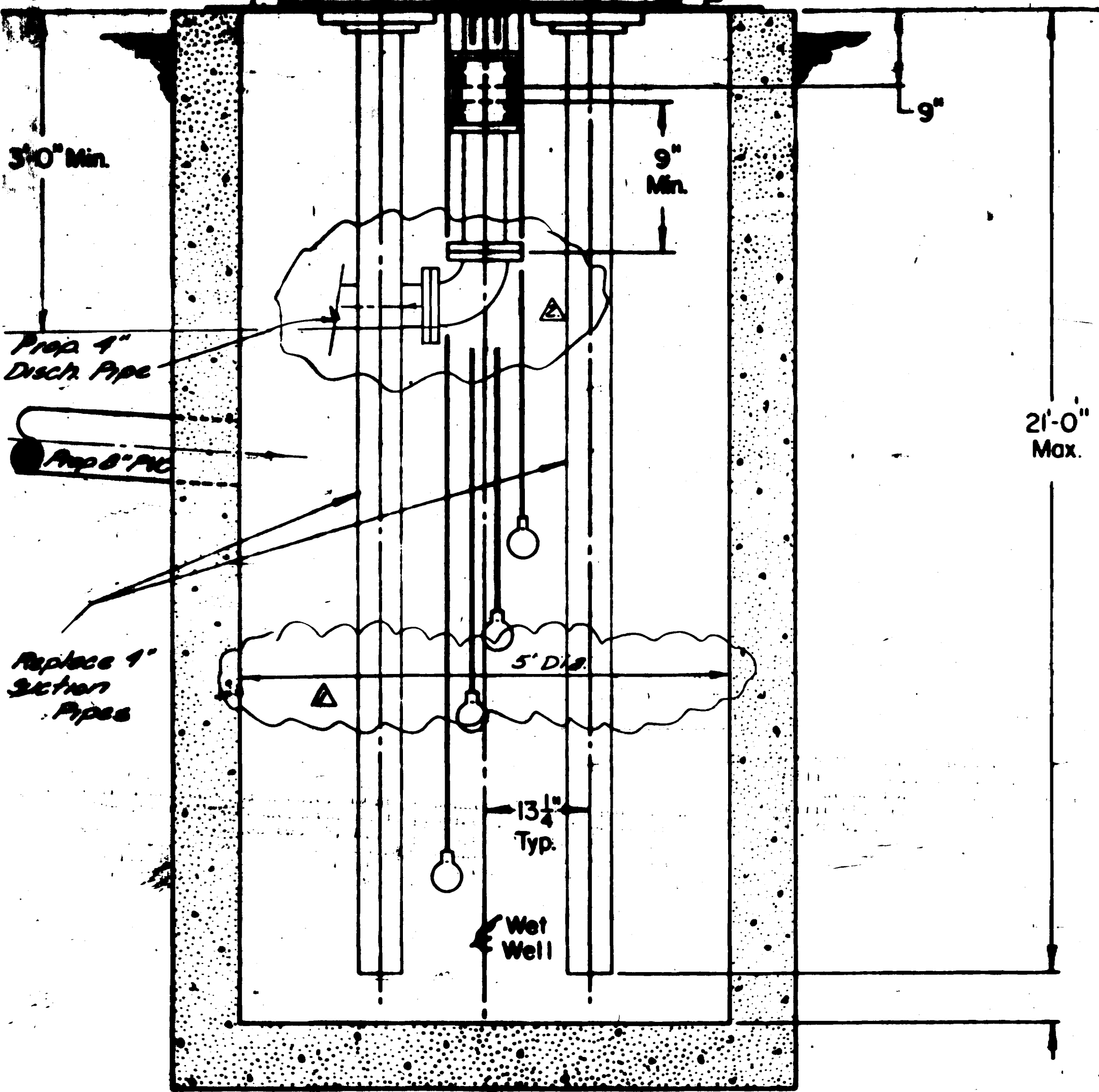
Designed By: *K. E. Kolar* 2-1-84

Approved By: *[Signature]* 2-1-84

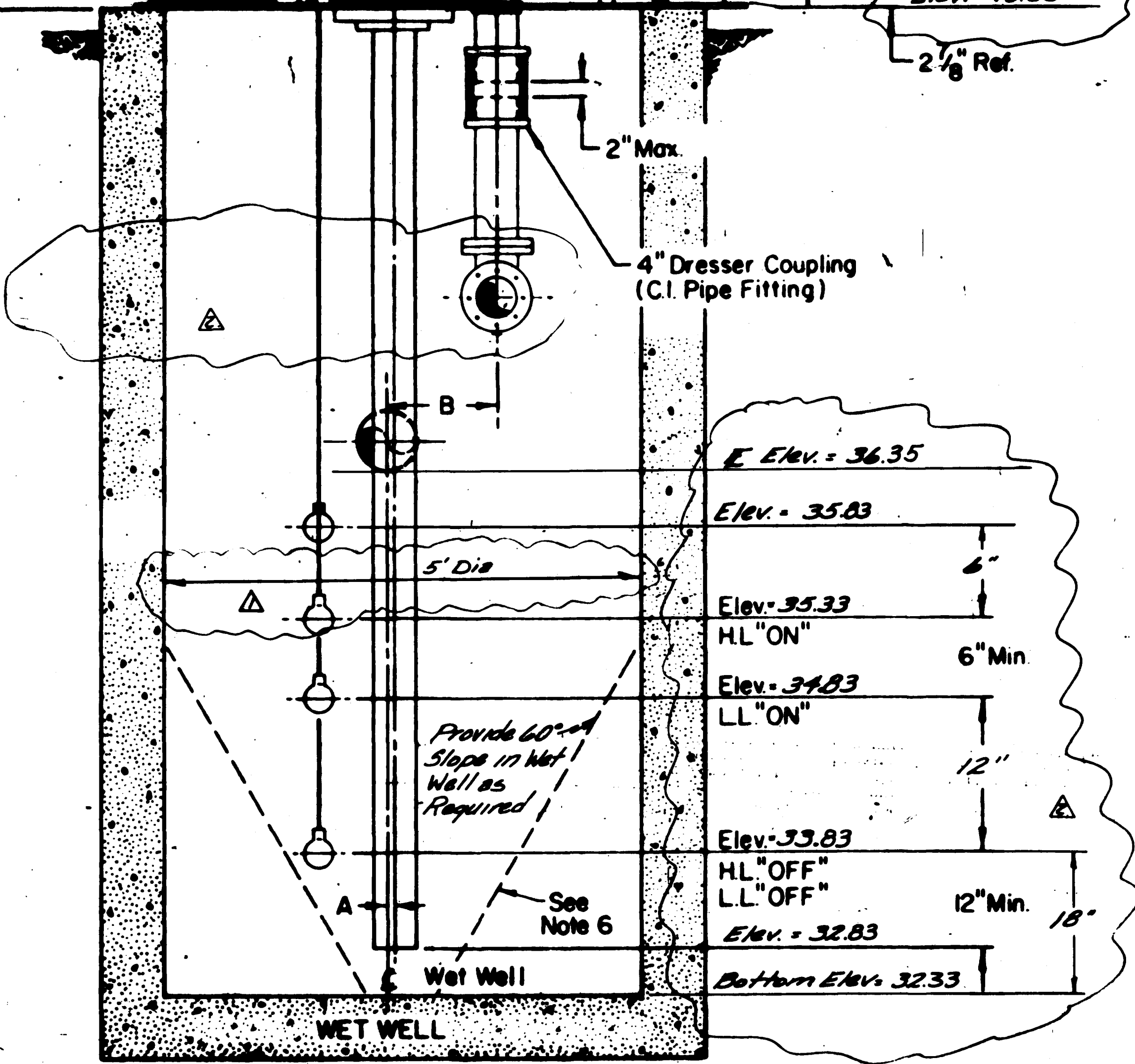
WET WELL DIAMETER	DM A	DM B	DM C	DM D	DM E	DM F	MANWAY G
4'-0"	4"	15 1/8"	33"	66"	27 7/8"	32 3/8"	14" x 24"
5'-0"	8"	19 1/8"	34"	68"	33 3/8"	37 7/8"	24 1/2" x 28"
6'-0"	2"	13 1/8"	40"	80"	27 3/8"	31 7/8"	24 1/2" x 28"



PLAN VIEW
MACH. CHAMBER
(Shown Less Cover)
Not to Scale
Proposed Lift Station



SECTIONAL ELEVATION - CC
Not to Scale
Proposed Wet Well



CROSS SECTION - BB
Not to Scale
Proposed Wet Well

"AS BUILT"
May 21, 1984

NO.	REVISION DESCRIPTION	DATE	BY
Δ	Revised Manhole Diameter	2-15-84	AN
▲	"As Built"	5-21-84	AN

ARMSTRONG & ASSOCIATES, INC.
981 Road Avenue
Grand Junction, Colorado 81501
(303) 245-2020

Architects
Engineers
Planners
Surveyors
Soil Testing
Material Testing
U.S. Mineral Surveyors
Geotechnical Engineers

Labelle Lift Station
Rehabilitation

Project No. 834272
Date: 12-8-83
Revisions:
Drawn: RCB
Checked:
Approved:

Proposed
Wet Well
Sheet 2 of 2