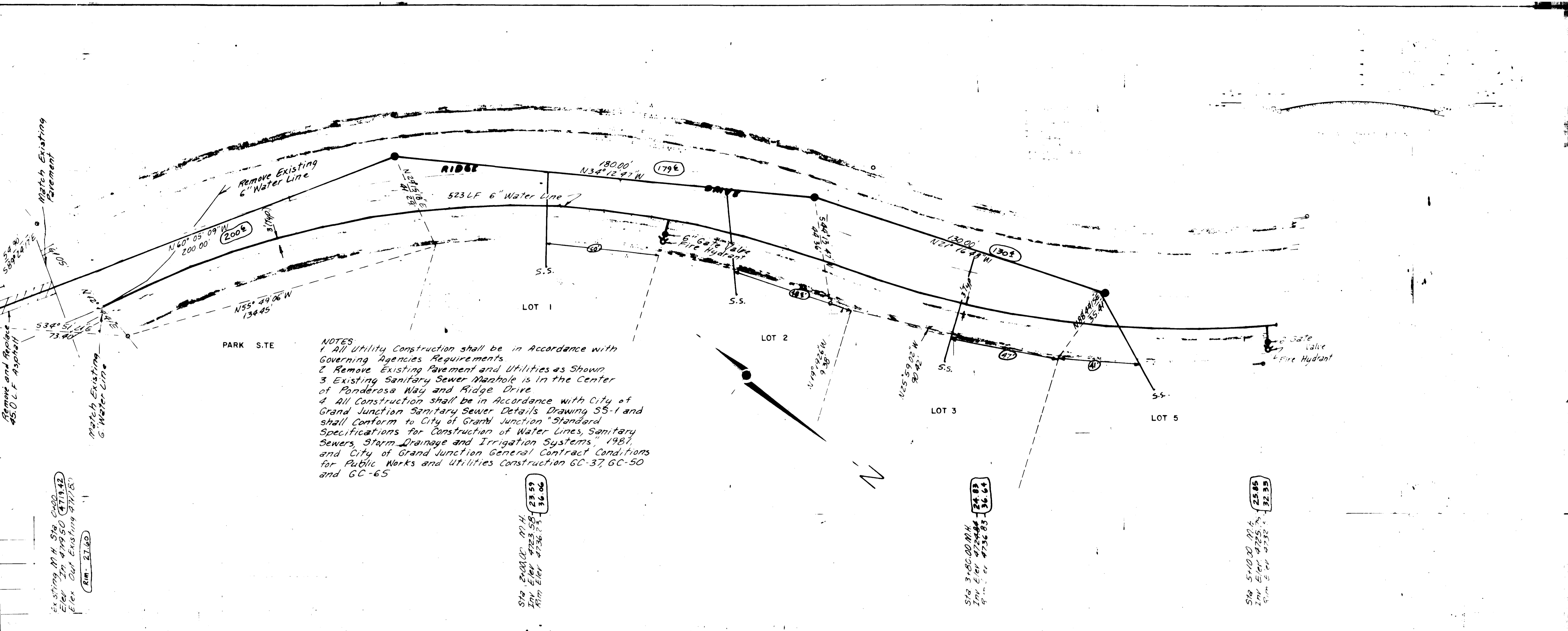


Existing Gate Valve  
**PONDEROSA WAY**  
 Existing Irrigation Line  
 Match Existing Pavement  
 Remove and Replace 45.0 LF Asphalt  
 Match Existing 6" Water Line  
 Existing M.H. Sta. 479.50 (479.42) Elev. 479.50  
 Elev. 479.50  
 Rim - 21.60



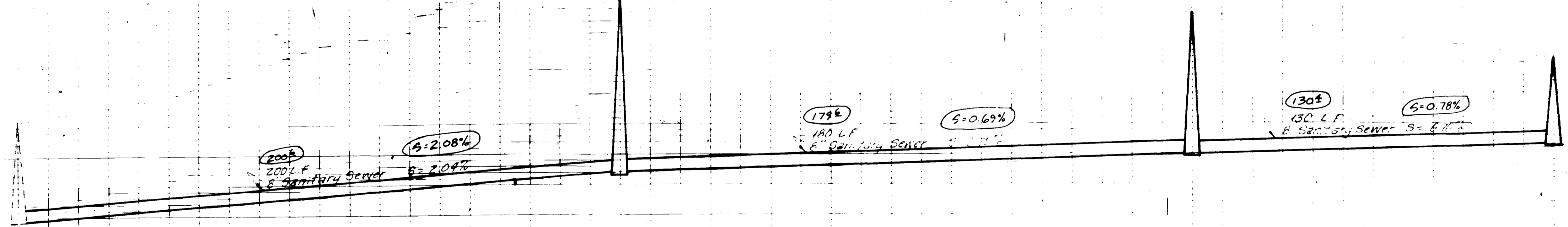
**NOTES**  
 1 All Utility Construction shall be in Accordance with Governing Agencies Requirements  
 2 Remove Existing Pavement and Utilities as Shown  
 3 Existing Sanitary Sewer Manhole is in the Center of Ponderosa Way and Ridge Drive  
 4 All Construction shall be in Accordance with City of Grand Junction Sanitary Sewer Details Drawing SS-1 and shall conform to City of Grand Junction "Standard Specifications for Construction of Water Lines, Sanitary Sewers, Storm Drainage and Irrigation Systems" 1981, and City of Grand Junction General Contract Conditions for Public Works and Utilities Construction GC-37, GC-50 and GC-65

Existing M.H. Sta. 479.50 (479.42)  
 Elev. 479.50  
 Elev. 479.50  
 Rim - 21.60

Sta. 3+80.00 M.H.  
 Inv. Elev. 4723.58  
 Rim Elev. 4736.23

Sta. 3+80.00 M.H.  
 Inv. Elev. 4724.04  
 Rim Elev. 4736.83

Sta. 5+10.00 M.H.  
 Inv. Elev. 4725.75  
 Rim Elev. 4738.25



AS BUILT  
 11/9/82

NOTE:  
 This is to certify that the system infiltration does not exceed 200 gallons per inch diameter per mile of length per day.

**AS BUILT DRAWINGS**  
 11-15-82

REVISIONS: B-BUILT SEWER SERVICE  
 LOCATIONS - 11-15-82 by TUP

*Wayne M. [Signature]*