

CENTRAL GRAND VALLEY
SANITATION DISTRICT

C 7/8 SANITARY SEWER INTERCEPTOR

PHASE I

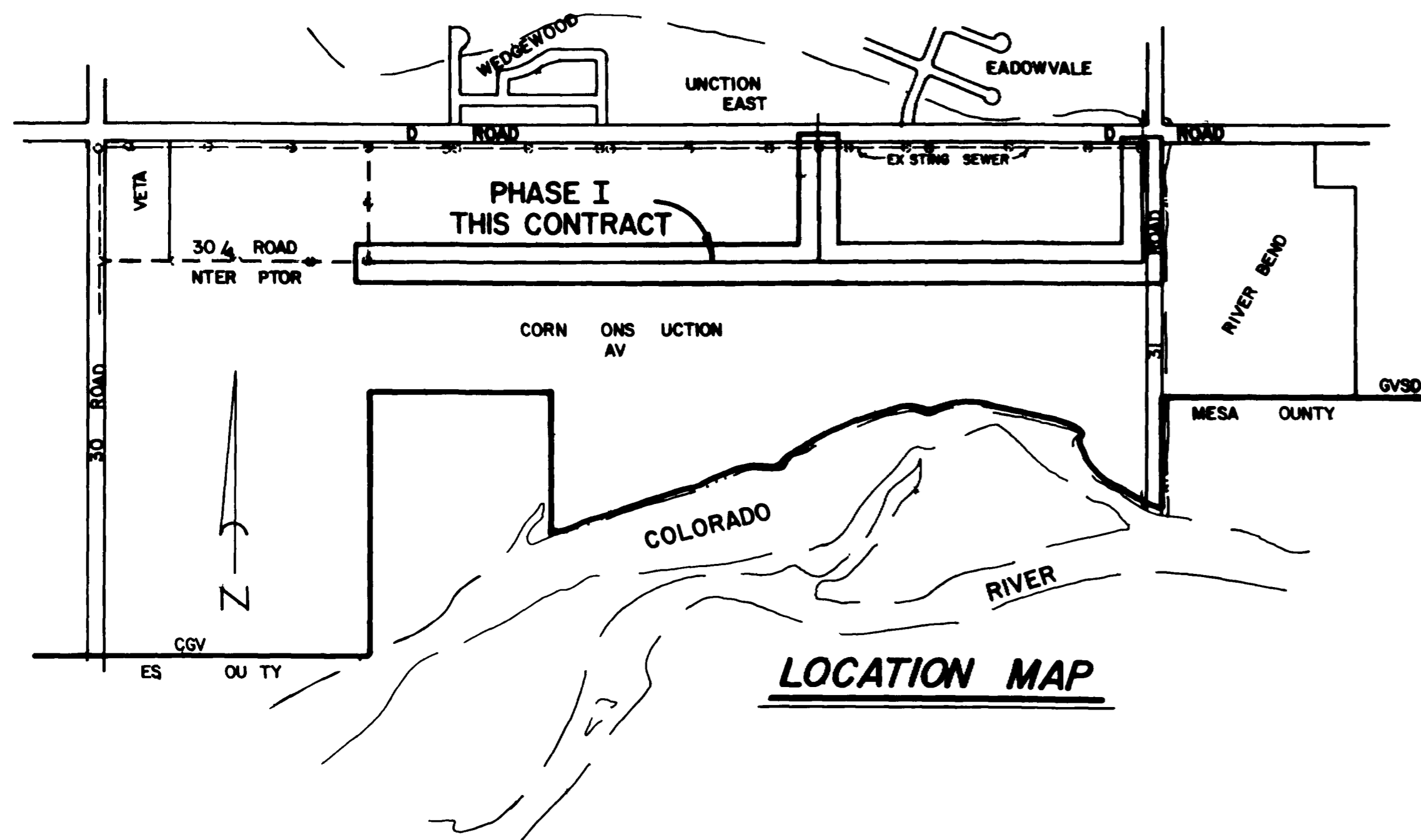
30 1/4 ROAD INTERCEPTOR

to

31 ROAD & D ROAD

SHEET INDEX

SHEET	DESCRIPTION
1	INDEX
2	'A' LINE STATION 0+00 to STATION 22+3078
3	'B' LINE STATION 0+00 to STATION 6+52 13
4	'A' LINE STATION 22+3078 to STATION 38+91 78 'C' LINE STATION 0+00 to STATION 6+58 50

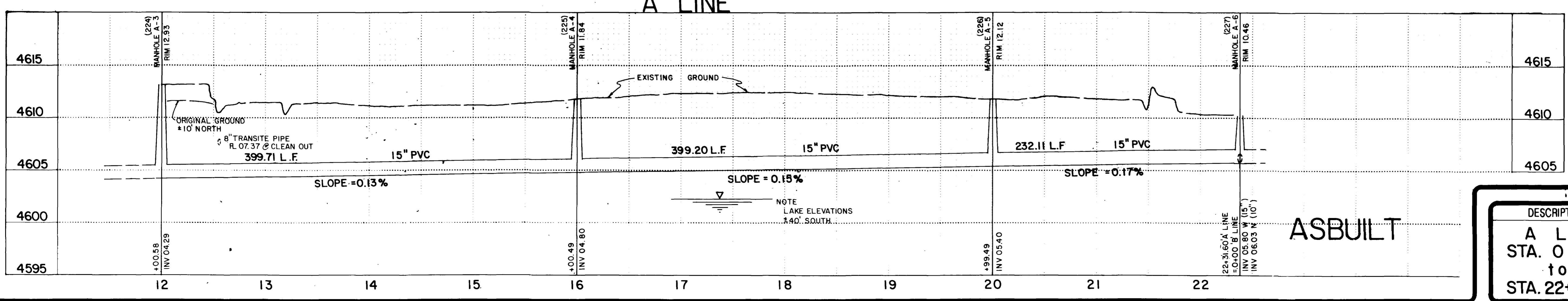
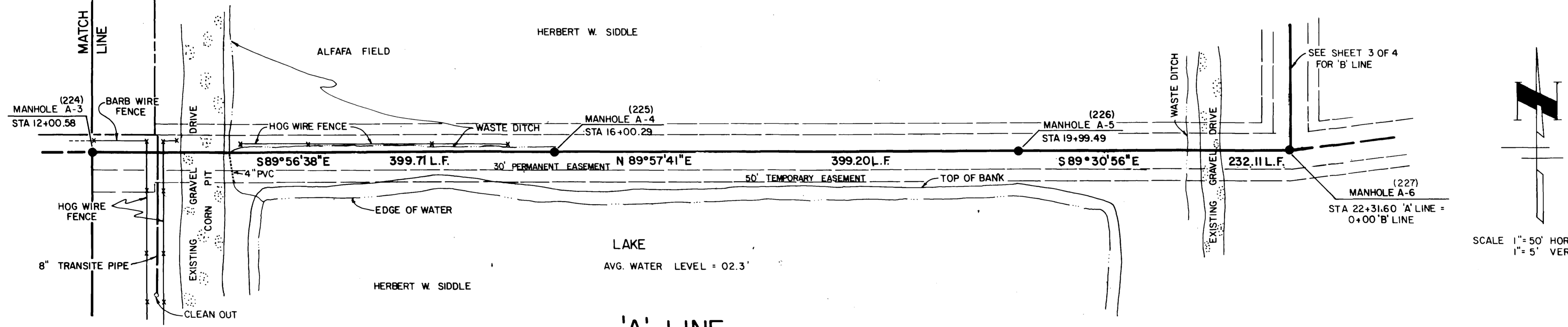
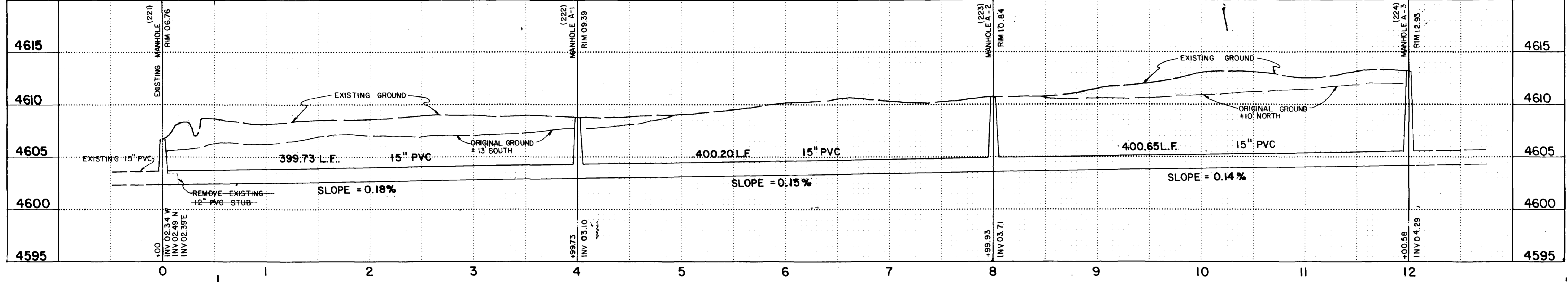
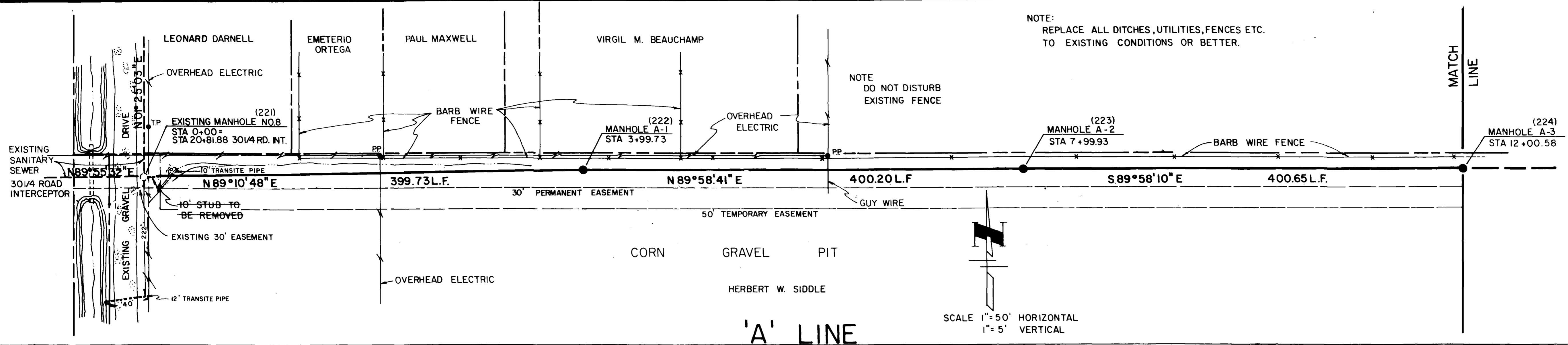


WAYNE M ROBERTS & ASSOC
008 M I S G J INC IN CO 8150
PHONE (303) 345-1882



DESCRIPTION
INDEX

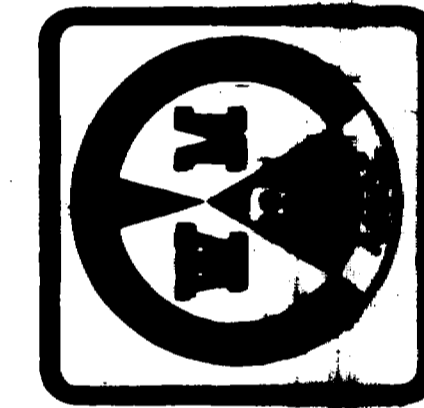
SHEET
1
OF 4



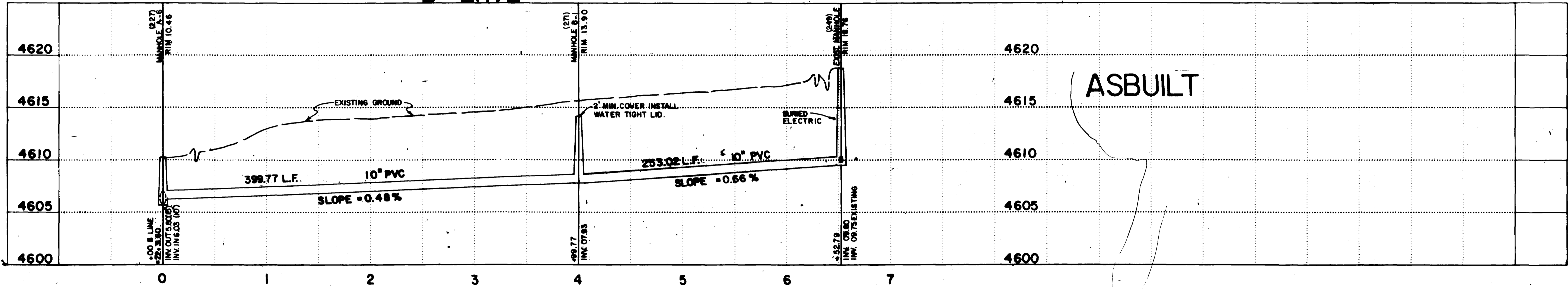
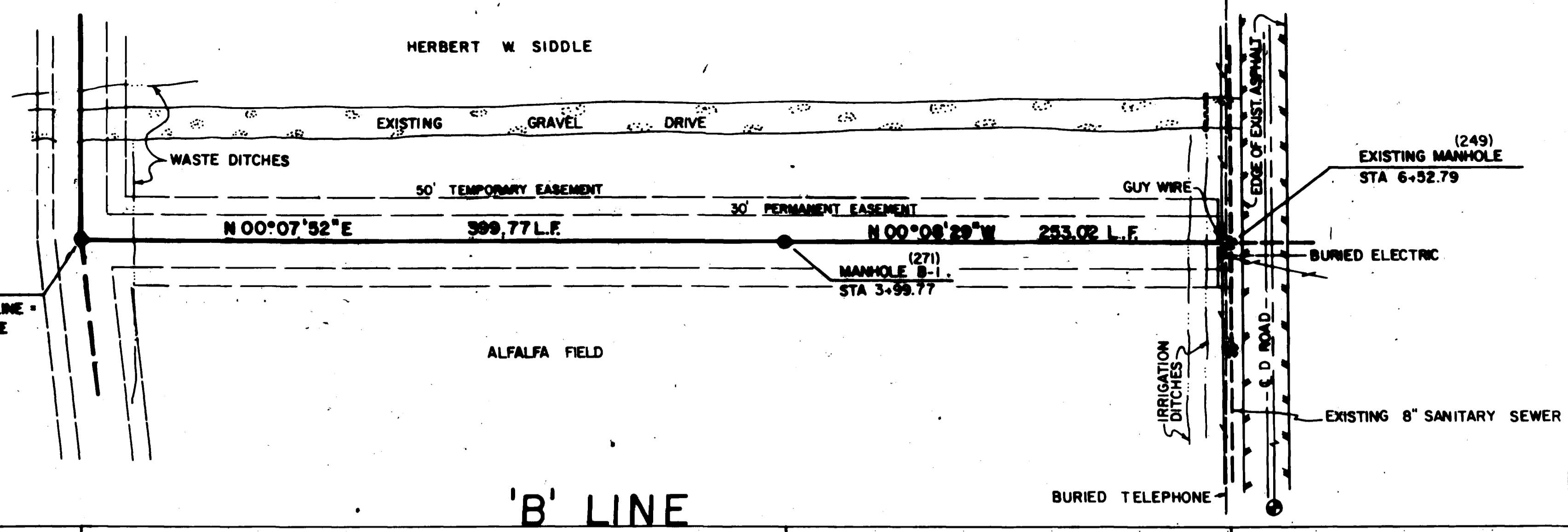
ASBUILT

REVISIONS	DATE	BY
ASBUILT 1/21/00		

WAYNE M. ROBERTS & ASSOC.
1008 Main St. Grand Junction, CO 81501
PHONE (970) 249-4000



CENTRAL GRAND VALLEY SANITATION DISTRICT
C7/8 SANITARY SEWER INTERCEPTOR



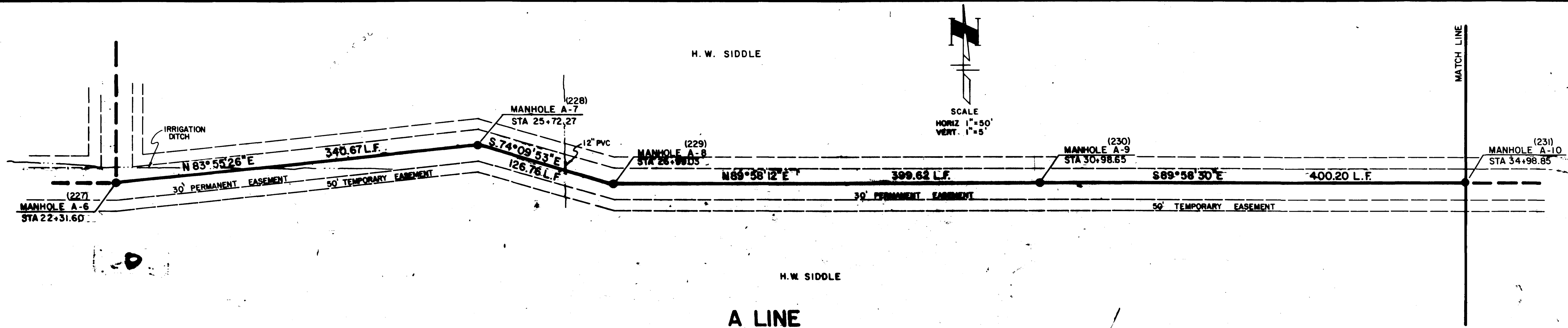
SPECIFICATIONS

- PVC PIPE AND FITTINGS - ASTM D3034 for SDR35
- PVC PIPE JOINTS - SHALL BE TESTED IN ACCORDANCE WITH ASTM D-3212
- PRECAST REINFORCED CONCRETE MANHOLES - ASTM C-478 or AASHTO M-199
- MANHOLE RING AND COVER - ASTM A-30
- CENTRAL GRAND VALLEY SANITATION DISTRICT STANDARD SPECIFICATIONS
- MESA COUNTY SPECIFICATIONS
- CITY OF GRAND JUNCTION SPECIFICATIONS

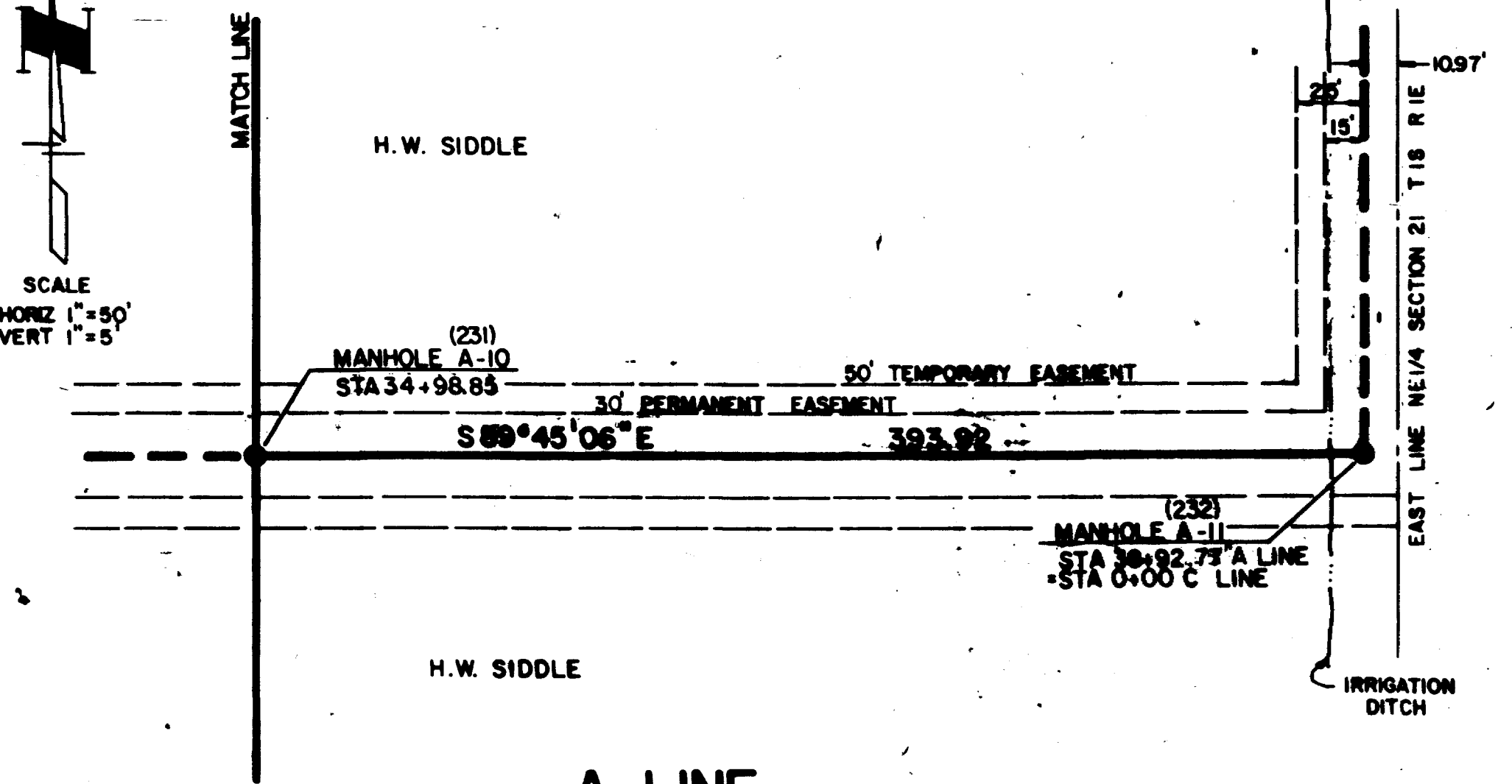
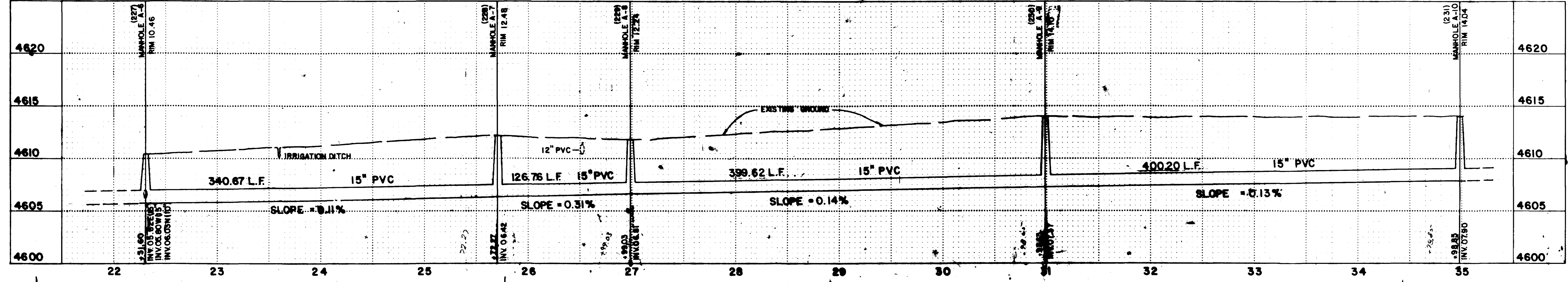
DESCRIPTION
B LINE
STA. 0 + 00
to
STA. 6 + 52.13

3
of 4

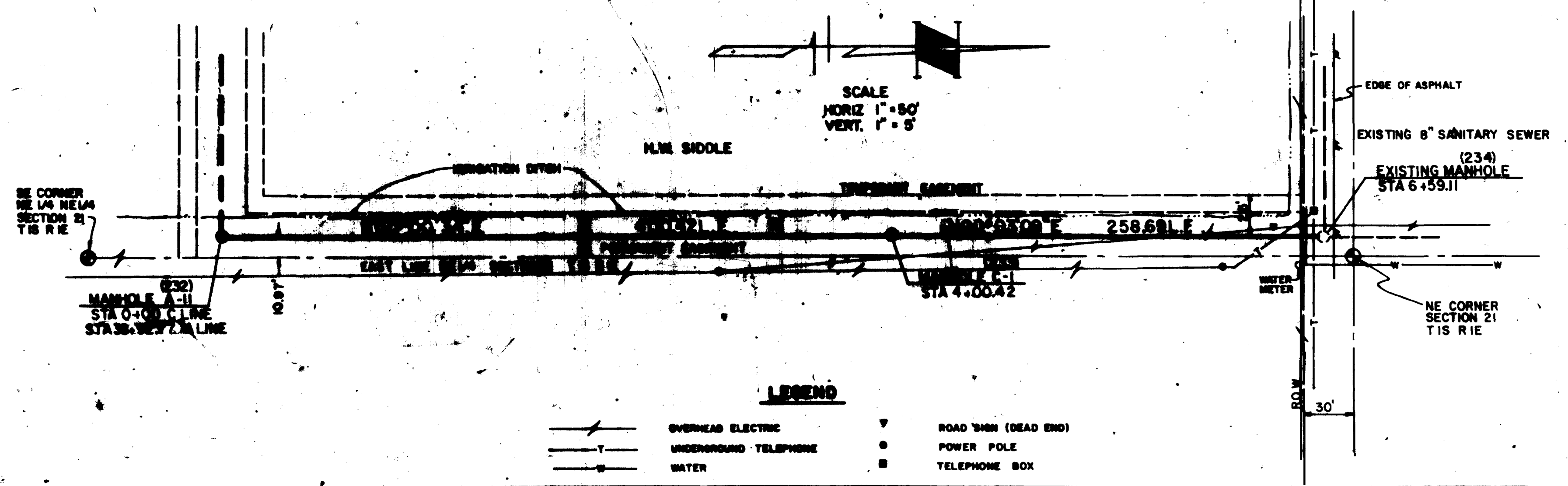
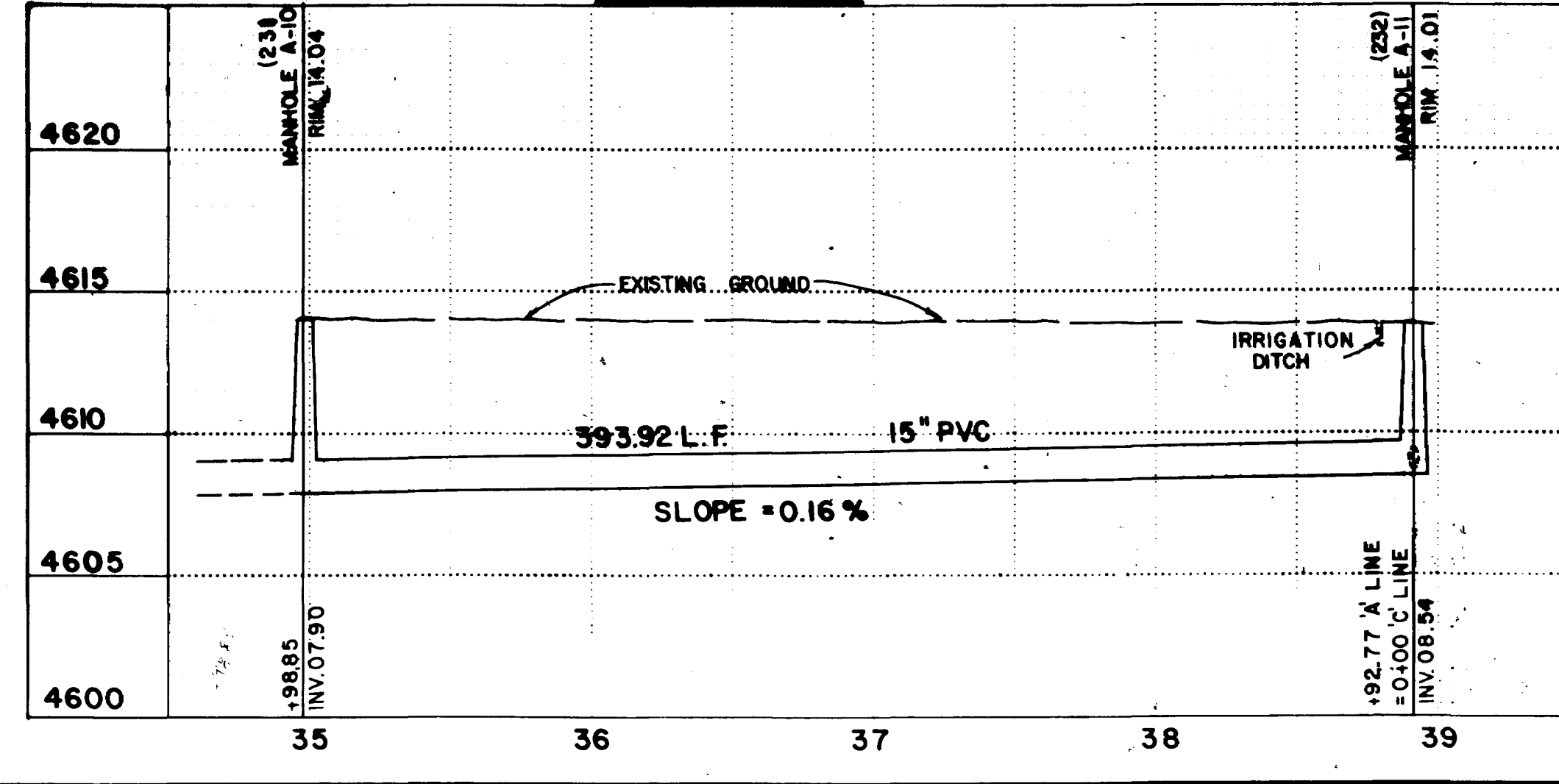
ASBUILT



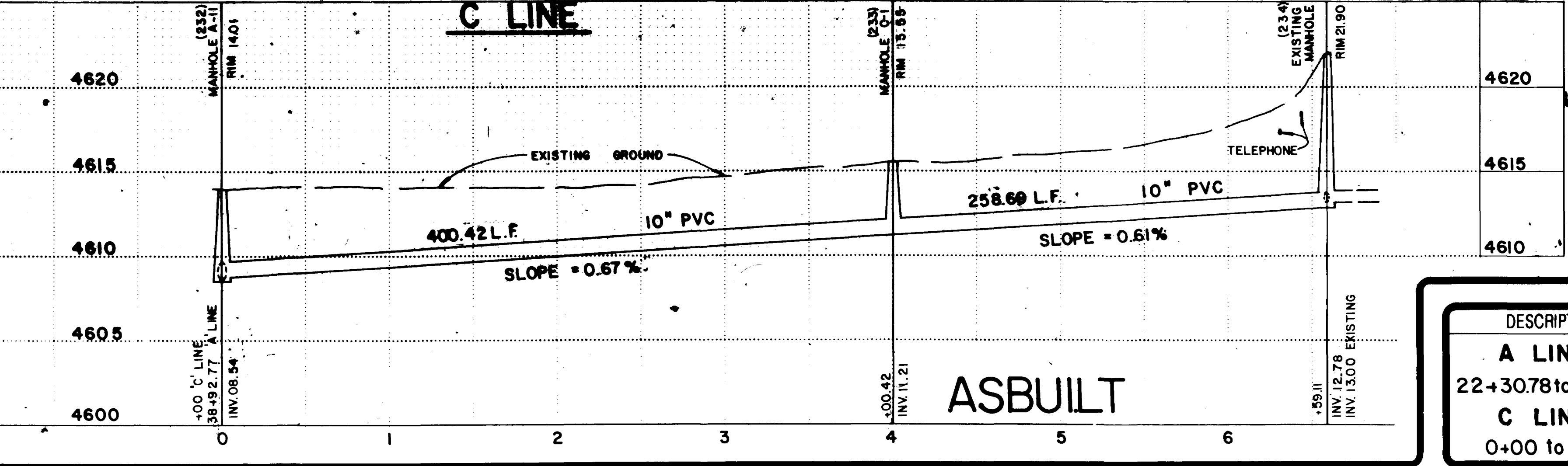
A LINE



A LINE



C LINE



ASBUILT

DESCRIPTION
A LINE 22+30.78 to 38+91.78
C LINE 0+00 to 6+58.50

SHEET
4
OF 4

CHECKED W.M.R.
DATE NOVEMBER 14, 1984
SCALE AS SHOWN

REVISIONS	BY
NOV 30, 1984 ADD TO ORIG PLAN	W.M.R.
ASBUILT 1/21/85	W.M.R.

WAYNE M. ROBERTS & ASSOC.
1008 Main St. Grand Junction, CO 81501
Phone (303) 243-1822



CENTRAL GRAND VALLEY SANITATION DISTRICT
C7/8 SANITARY SEWER INTERCEPTOR