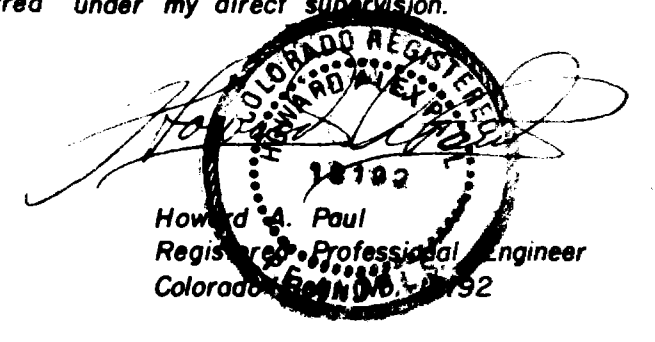


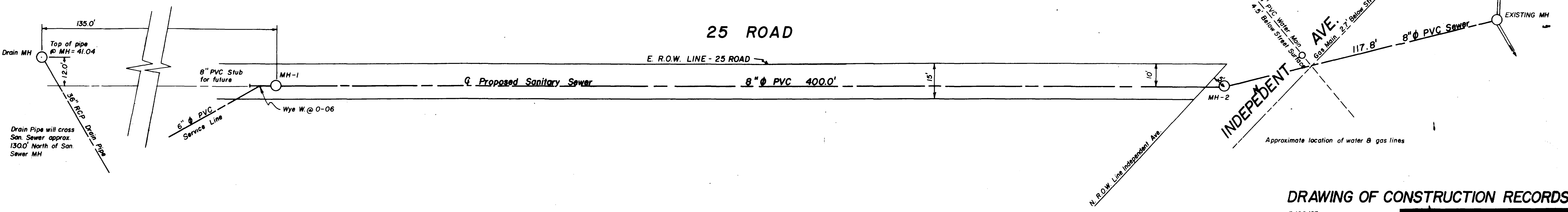
All construction shall be in accordance with the City of Grand Junction Standard Sanitary Sewer Details Drawing SS-1 and shall conform to the City of Grand Junction "Standard Specifications for Construction of Water Lines, Sanitary Sewers, Storm Drainage and Irrigation Systems", 1981, and City of Grand Junction General Contract Conditions for Public Works and Utilities Construction GC-37, GC-50 and GC-65.

This drawing prepared under my direct supervision.



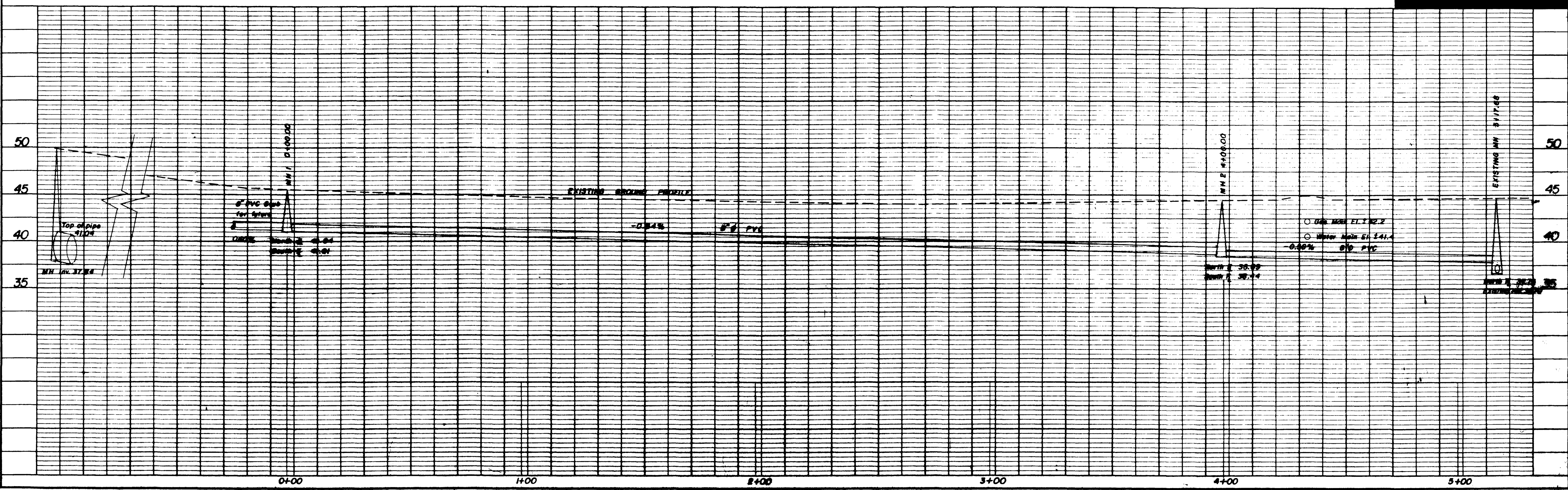
SCALE

1" = 20' Horiz.
1" = 5' Vert.



DRAWING OF CONSTRUCTION RECORDS

3/28/83



SANITARY SEWER - HWY 6 & 50 and 25 ROAD