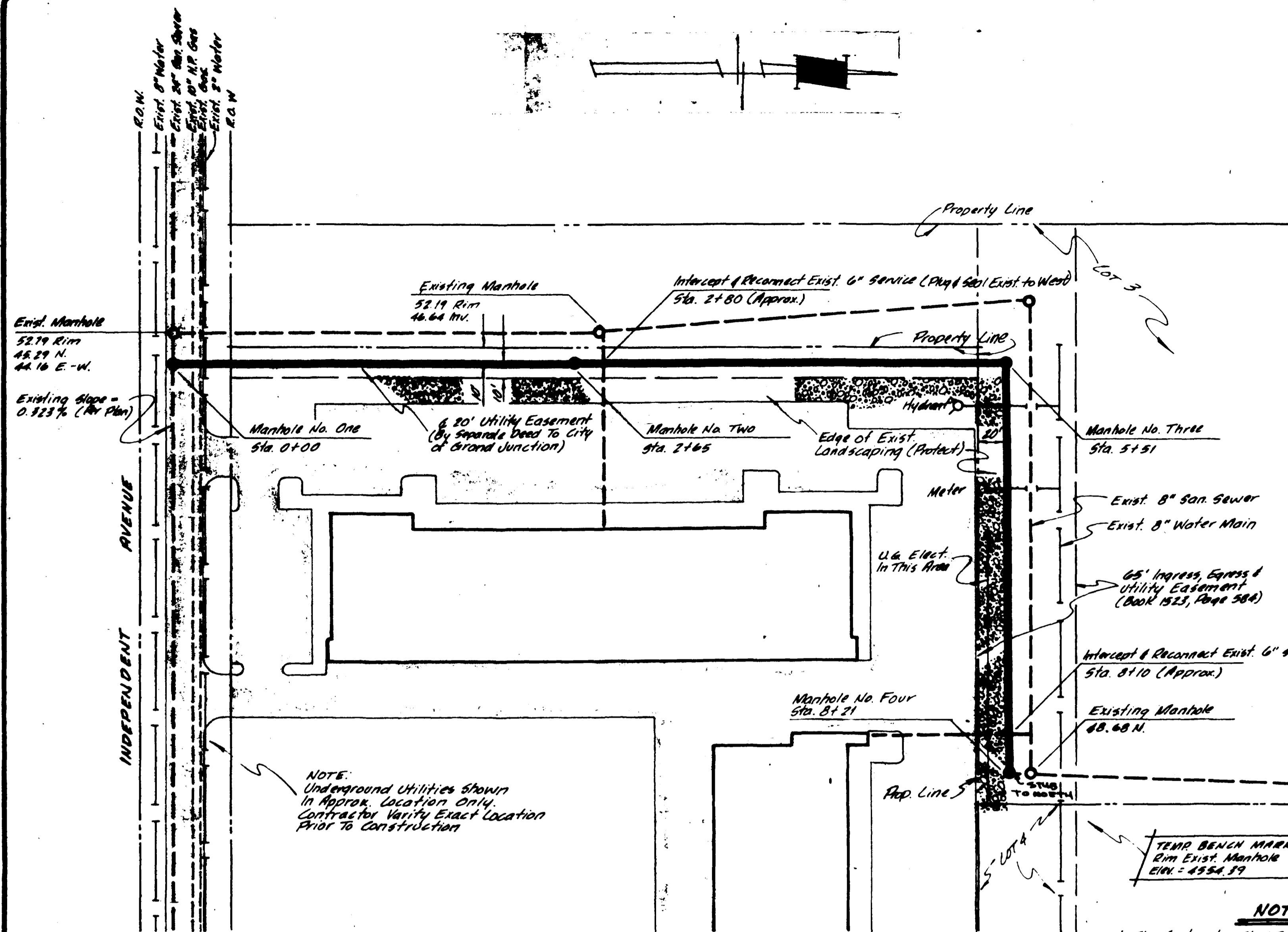


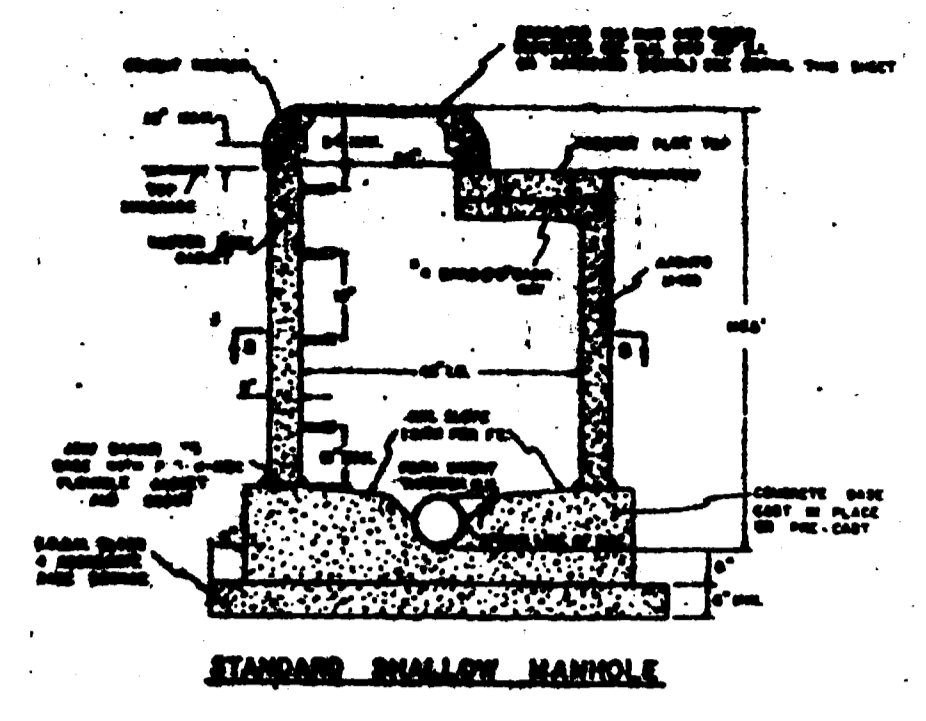
REVISIONS	BY



- QUANTITIES**
- 831 LF 8" R/C Sewer
  - 3 - Std. Manholes 0'-6" Deep
  - 1 - Std. Manhole Over Exist. Main
  - 2 - Reconnect Exist. 8" Service Lines
  - 24 LF - 8' Wide Right-of-Way Easement
  - 2 - Compaction Tests (Street Only)

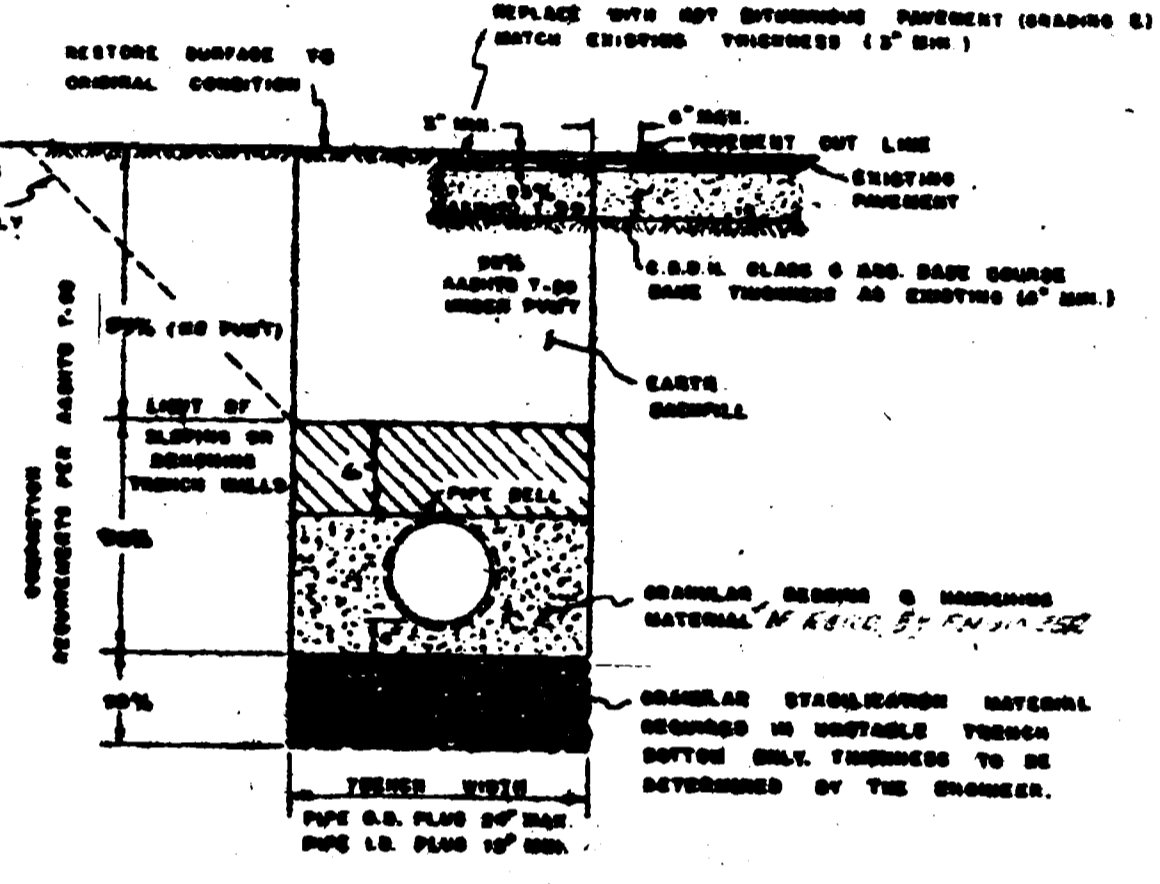
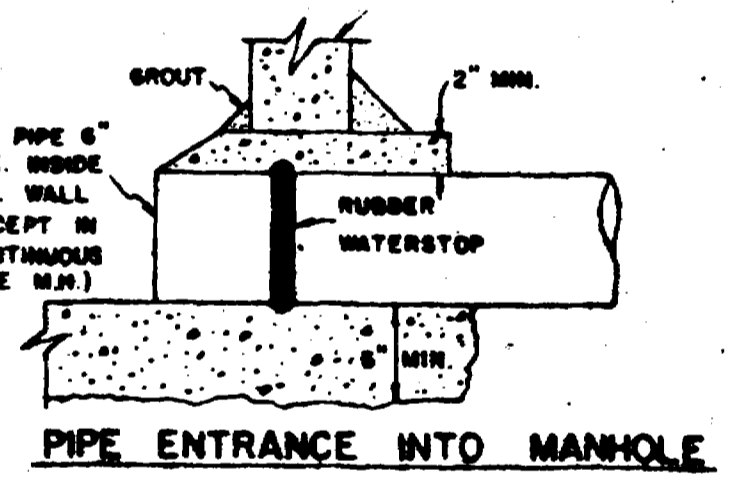
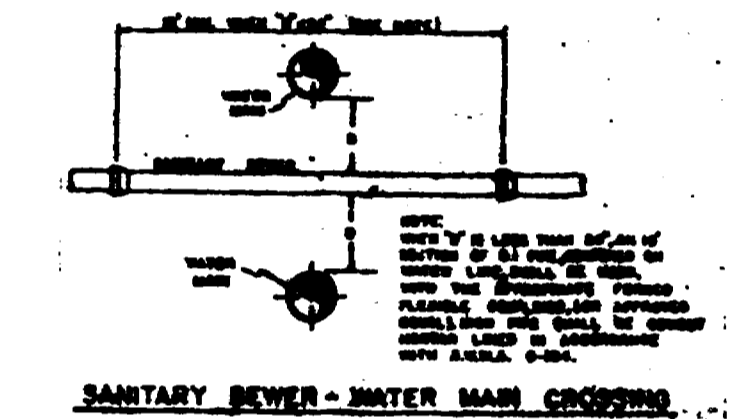
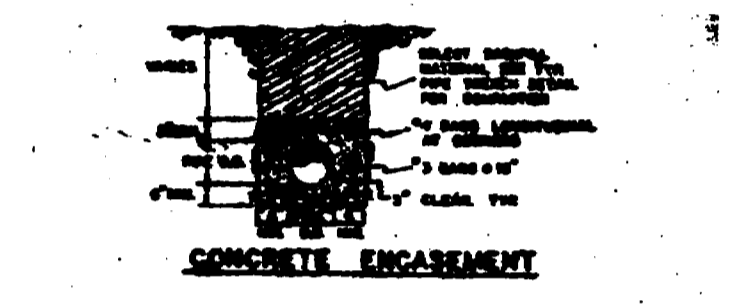
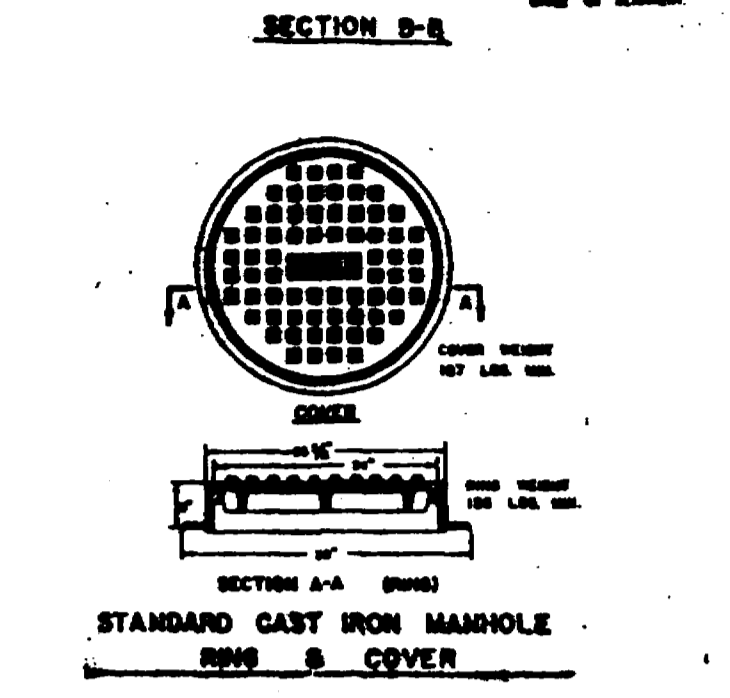
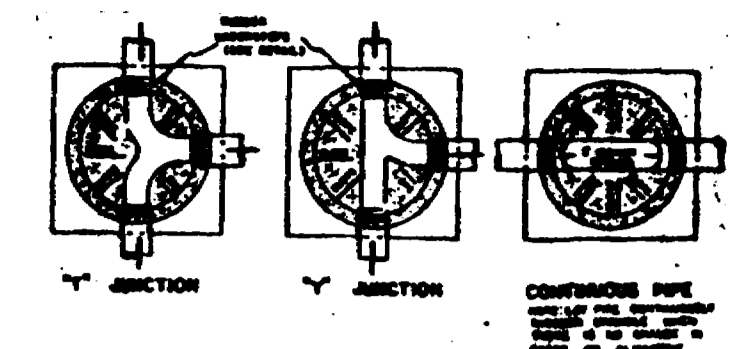
**PLAN**  
Scale: 1" = 50'

- NOTES**
- The Contractor shall be responsible for locating existing improvements & protecting the integrity of same.
  - All construction shall be in accordance with the City of Grand Junction specifications.
  - All construction shall conform to City of Grand Junction Standard Ord. 8-2-1 & General Contract Conditions for Public Works & Utilities Const. 60-37, 50, & 65.
  - The Contractor shall be responsible for obtaining all permits.
  - Minimum Relative Compaction in Roadways to be 90% in Pipe Zone.
  - All Manhole Rims to be a Minimum of 0.5 ft. above surrounding grade when not in Roadways.



**MANHOLE NOTES**

- MANHOLE SHALL BE CONSTRUCTED IN ACCORDANCE WITH SECTION 8-2-1.
- ALL MANHOLE WALLS SHALL BE CONSTRUCTED OF BRICK OR MASONRY. MANHOLE WALLS SHALL BE TYPE 2 OR HIGHER TYPE 2 CONSTRUCTION WITH LEAN CONCRETE THROUGHOUT. MANHOLE WALLS SHALL BE CONSTRUCTED WITH 1/2" REINFORCING BARS AT 12" ON CENTER.
- MANHOLE COVER SHALL BE CAST IRON COVER SHALL BE FICCATY MANHOLE COVER CONFORMING TO SPEC 8-170 IN PART 8-10.

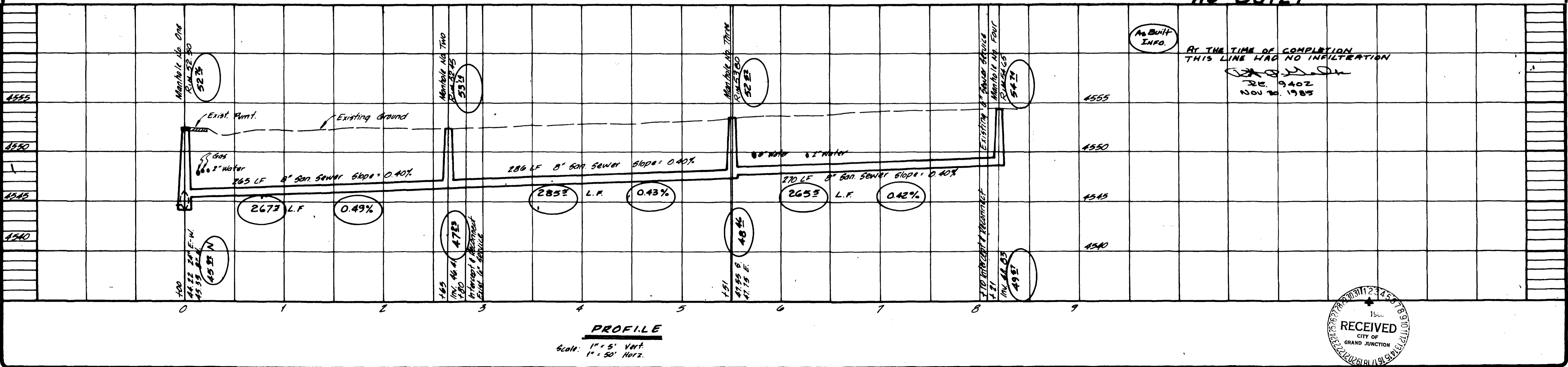


**TYPICAL TRENCH**

SIEVE SIZE	PERCENT BY WEIGHT PASSING SQUARE MESH SIEVES	
	GRANULAR BEDDING AND MANHOLES MATERIAL	SUBGRADE STABILIZATION MATERIAL
4 INCH	100	100
1 INCH	100	100
No. 200	0-2	0-15

ALL BACKFILL MATERIAL SHALL BE PLACED FULL WIDTH IN 6" MAX. LIFTS AND COMPACTED TO THE MINIMUM RELATIVE DENSITIES SHOWN.

**AS BUILT**



**PROFILE**  
Scale: 1" = 5' Vert.  
1" = 50' Horiz.



NEW SANITARY SEWER MAIN AT:  
INDEPENDENCE PLAZA OFFICE COMPLEX  
GRAND JUNCTION, COLORADO