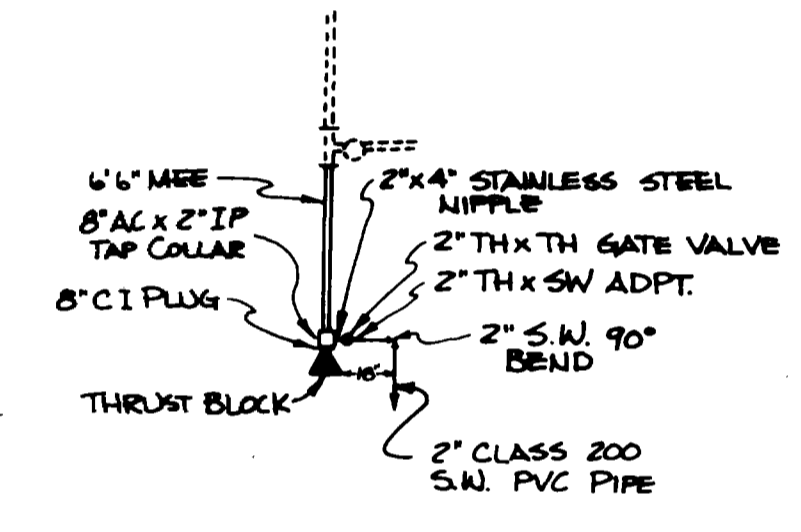
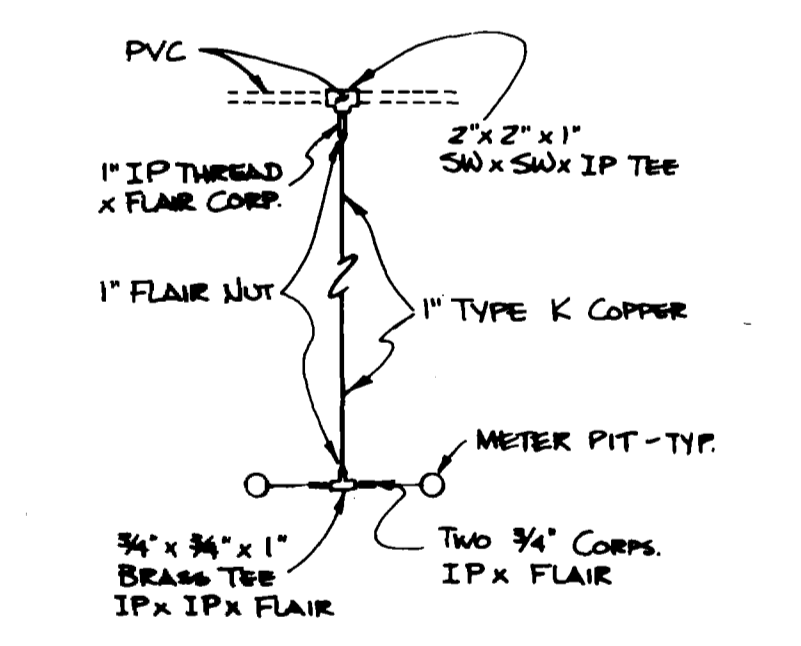


- NOTES**
- 8" WATER LINE TO BE AC, CLASS 150
 - 2" WATER LINE TO BE SOLVENT WELD PVC, CLASS 200
 - ALL WATER LINES SHALL HAVE A MINIMUM OF 4" OF COVER FROM TOP OF PIPE TO FINISHED GRADE
 - PIPE BETWEEN THE VALVE & HYDRANT SHOULD BE BLUE-BRUTE OR VINYL IRON (6")
 - SEWER TO BE PVC, SDR 35
 - CONCRETE ENCASUREMENT OF S.S. A LENGTH OF 10' EACH SIDE OF WATER LINE, WHERE TOP OF S.S. IS LESS THAN 18" BELOW BOTTOM OF WATER
 - SEE SHEETS 9 & 10 FOR WATER AND SEWER DETAILS.
 - FIRE HYDRANTS ARE TO BE AS SPECIFIED IN CITY OF GRAND JUNCTION SPECIFICATIONS.



DETAIL "A"
NO SCALE



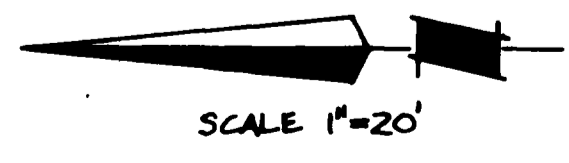
DETAIL "B" TYPICAL DOMESTIC SERVICES
NO SCALE

NOTE: THE CONTRACTOR SHALL EXCAVATE A TRENCH FROM THE METER PITS TO A POINT TWENTY FEET IN FROM THE FRONT OF EACH UNIT. MIN. DEPT SHALL BE 42". THIS IS TYPICAL FOR ALL 18 UNITS.

BENCHMARK (M.C.B.)
ELEV. 100.00
N. 5000.0000
E 5000.0000

EXCAVATE A TRENCH 3-6" BELOW F.F. ELEV. OF UNITS FOR 4" LATERALS - DO THIS IN ROCK AREAS ONLY - TYP. ALL LATERALS

- LEGEND**
- F.F. - FINISH FLOOR ELEVATION OF BOTTOM UNIT
 - 2" W — WATER LINE
 - M.C.B. - MESA COUNTY BRASS CAP
 - ⊗ VALVE
 - ⊕ THRUST BLOCK
 - ⊙ FIRE HYDRANT
 - WATER METER PITS
 - S.S. - SANITARY SEWER



NO
Letter by Jim Peterson for New

DESIGNED BY TPB	REVISIONS	BECK, SHRUM and ASSOCIATES, INC. 2721 NORTH TWELFTH STREET, SUITE 28 GRAND JUNCTION, COLORADO 81501 engineers (303)243-1227 planners
DRAWN BY LS	NO. DATE	
DATE DRAWN DECEMBER 1, 1972	1 2-1-83	
	2 3/1/83	
	3 2/1/83	
	4 2-21-83	
	5 3-29-83	
	6 5/17/83	THE FAIRWAY WATER & SANITARY SEWER PLAN (W/SEWER AS-BUILT)
SCALE AS SHOWN	PROJECT NUMBER M 17.02	SHEET NUMBER 6 OF 10