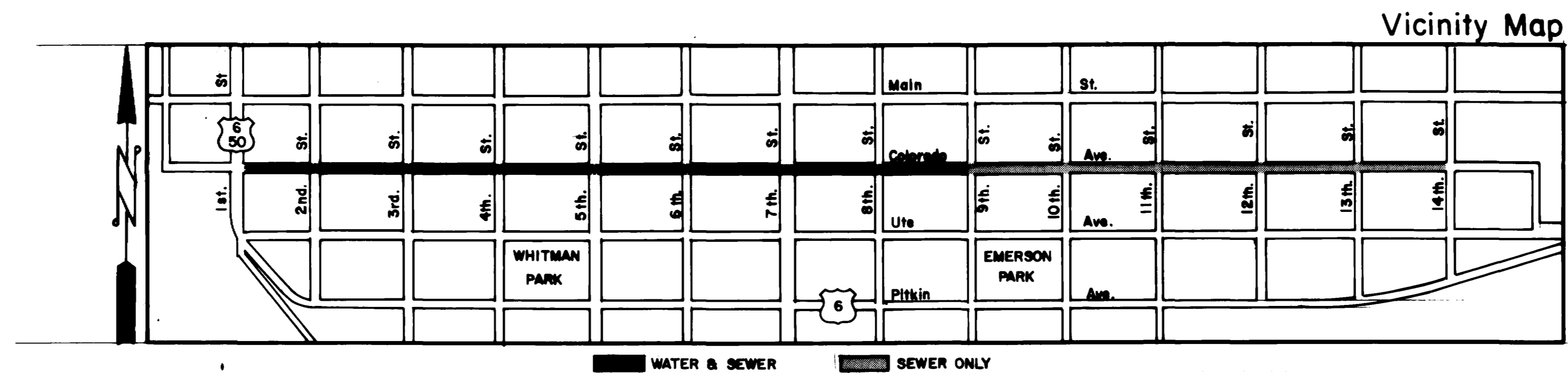
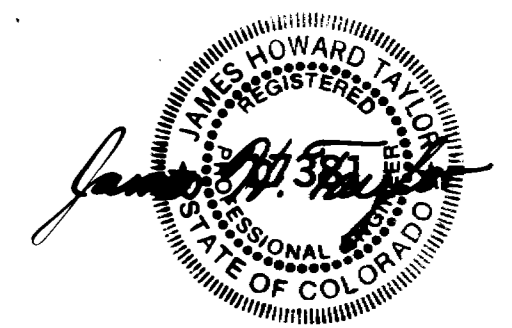


COLORADO AVENUE WATER & SEWER PROJECT 1ST. TO 14TH STREETS



1. Cover Sheet
2. Drafting Standards & Abbreviations
3. Summary of Approximate Quantities
- 4-14. Plan & Profile Sheets
15. Waterline Master Plan
16. Soil Boring Logs
17. Details
18. Standard Pavement Details ST-1
19. Standard Sanitary Sewer Details SS-1
20. Standard Waterline Details W-1
- 21-24. Traffic Control for Highway Construction C.D.O.H. Std. S-614-50
25. Barricades, Drum, Concrete Barriers (Temporary) & Vertical Panels, C.D.O.H. Std. S-614-51



CITY OF GRAND JUNCTION
DEPARTMENT OF PUBLIC WORKS AND UTILITIES ENGINEERING DIVISION

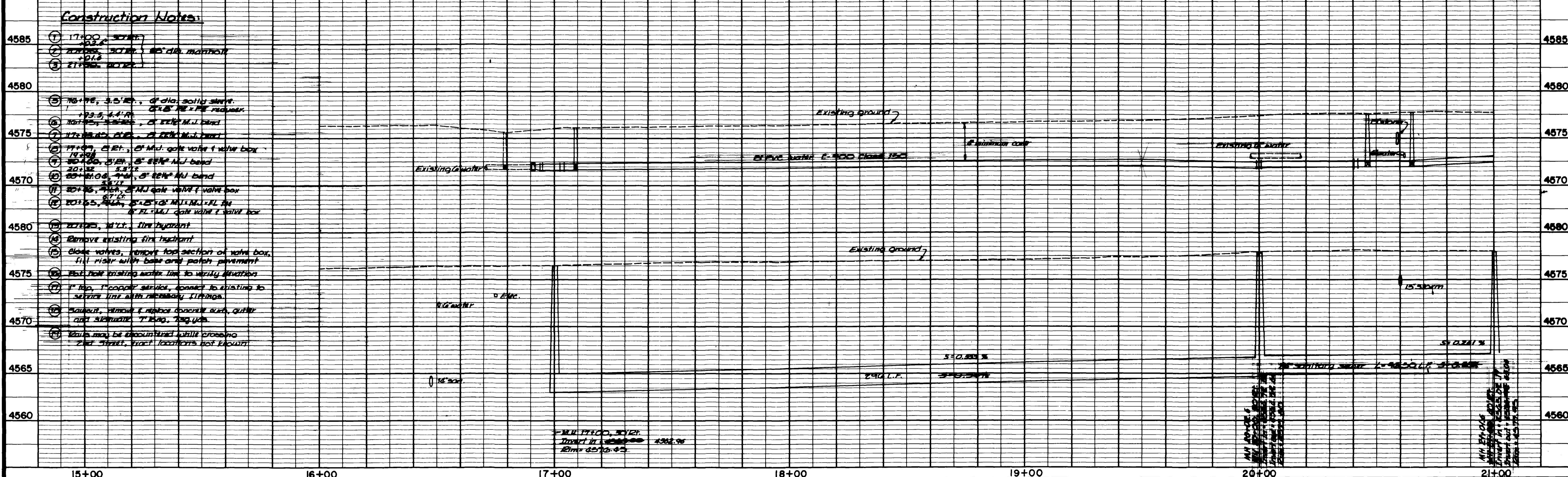
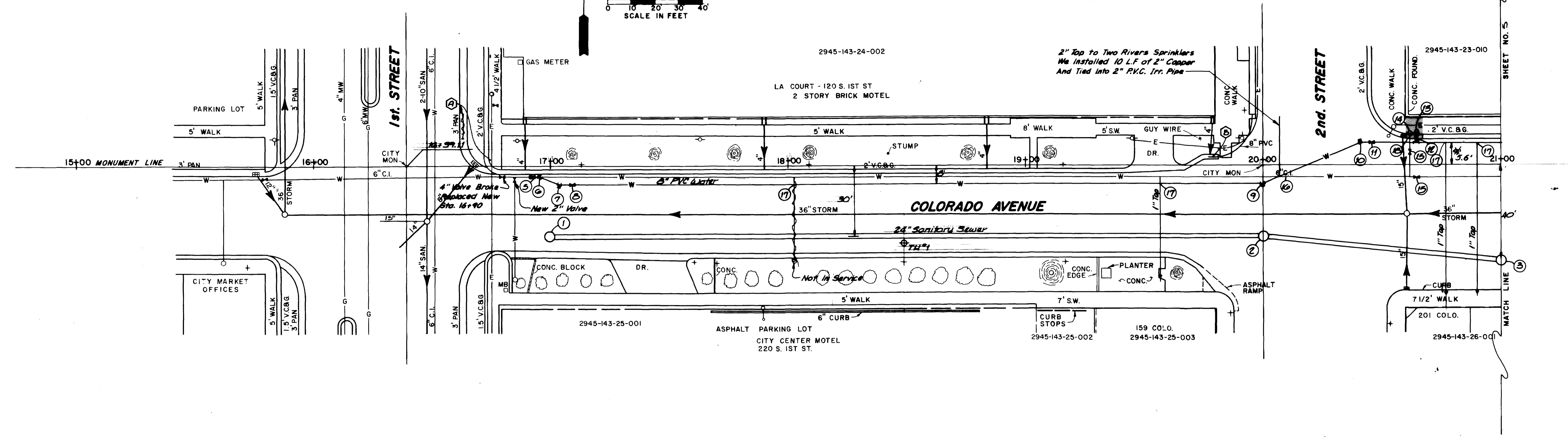
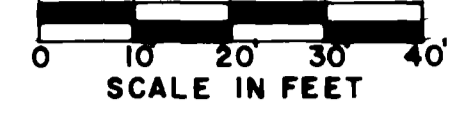
SUMMARY OF APPROXIMATE QUANTITIES

Item No.	Ref. No.	Contract Item	Unit	Quantity															Totals
1.		Remove Pavement for Waterline (Includes Concrete where Encountered) 4' Maximum Width	Sq. Yd.	1,920															
2.		Remove Reducer, 45 Deg. Bend, Plug End of Pipe	Lump Sum	Lump Sum															
3.		Remove 45 Deg. Bend, Plug End of Pipe	Each	3															
4.		Remove Reducer, 45 Deg. Bend as Necessary to Make Connections	Lump Sum	Lump Sum															
5.		Remove Valve, Box & Pipe as Necessary. Plug Any Open Pipe that Remains	Lump Sum	Lump Sum															
6.		Remove Valve, Box Plug End of Pipe	Each	3															
7.		Remove Existing Fire Hydrants	Each	7															
8.		Close Valve, Remove Top Section of Box, Fill Riser with Base, Patch Pavement	Each	9															
9.		Cut Pipe, Cap End, Pour Thrust Block	Lump Sum	Lump Sum															
10.		Sawcut, Remove & Replace Concrete Curb, Gutter & Sidewalk	Sq. Yd.	38															
11.		Sawcut, Remove & Replace 2' Wide Concrete Curb & Gutter	L.F.	8															
12.		Reset Sprinkler Head	Each	1															
13.		Adjust 8" Storm Sewer Connector Pipe Over Top of New Waterline	Lump Sum	Lump Sum															
14.		Over Excavation for Granular Subgrade Stabilization Material Under Waterline Where Authorized	Cu. Yd.	500															
15.		Select Backfill Material for Waterline Where Authorized. Includes Hauling & Disposal of Unsuitable Material	Tons	2,100															
16.		Granular Subgrade Stabilization Material Under Waterline Where Authorized	Tons	675															
17.		Aggregate Base Course Class 6 (Haul, Water & Compact) 9" Thickness for Waterline	Sq. Yd.	1,920															
18.		Hot Bituminous Pavement (Grade E)(Haul, Asphalt & Compact) 3" Thickness for Waterline. 4' Maximum Width	Sq. Yd.	1,920															
19.		Temporary Cold Mix Waterline Trench Patch at Intersections 4' Maximum Width	Sq. Yd.	200															
20.		8" PVC Water Pipe C-900, Class 150	L.F.	3,645															
21.		6" PVC Water Pipe C-900, Class 150	L.F.	45															
22.		8" Gate Valve MxMJ with Valve Box	Each	6															
23.		8" Gate Valve MxFL with Valve Box, Cap End of Valve	Each	1															
24.		6" Gate Valve MxFL with Valve Box	Each	7															
25.		Fire Hydrant	Each	7															
26.		1" Tap Including Copper Pipe and Fittings	Each	75															
27.		2" Tap Including Copper Pipe and Fittings	Each	1															
28.		Remove Pavement for Sewer Line (Includes Concrete Where Encountered)8' Maximum Width	Sq. Yd.	5,600															
29.		Remove Existing 10" Storm Sewer Pipe	L.F.	938															
30.		Remove Existing Manhole	Each	2															
31.		Remove 12" Pipe as Necessary. Plug Pipe at Manhole	Lump Sum	Lump Sum															
32.		Plug Existing 10" Pipe at Manhole 78+38.5	Lump Sum	Lump Sum															
33.		Sawcut, Remove & Replace 5' Wide Concrete Gutter Pan	L.F.	13															
34.		Over Excavation for Granular Subgrade Stabilization Material Under Sewer Line Where Authorized	Cu. Yd.	1,800															
35.		Select Backfill Material for Sewer Line Where Authorized. Existing Material to be Used When Possible. Includes Hauling & Disposal of Unsuitable Material	Tons	26,000															
36.		Granular Subgrade Stabilization Material Under Sewer Line Where Authorized	Tons	2,900															
37.		Aggregate Base Course Class 6 (Haul, Water & Compact) 9" Thickness for Sewer Line	Sq. Yd.	5,600															
38.		Hot Bituminous Pavement (Grade E)(Haul, Asphalt & Compact) 3" Thickness for Sewer Line 8' Maximum Width	Sq. Yd.	5,600															
39.		48" Dia. Manhole	Each	17															
40.		48" Dia. Manhole with 12" Dia. Drop Sewer	Each	1															
41.		24" Sanitary Sewer Pipe	L.F.	6,068															
42.		12" Sanitary Sewer Pipe	L.F.	24															
43.		24" Stub & Plug	Lump Sum	Lump Sum															
44.		Cut & Remove Rails When Encountered Crossing Trench (2 Rails per Location)	Each	5															
45.		Pothole Utility Line to Verify Elevation	Each	3															
46.		Informational Newsletter (Approximately 40 Required per Week)	Weeks	20															
47.		Mobilization	Lump Sum	Lump Sum															
48.		Traffic Control (Advance Warning Signs, Barricades Flagmen)	Lump Sum	Lump Sum															

Bench Mark:
 Chis. sq. TC W CR
 NE cor. 1st & Colo.
 Elev. 4577.255

Bench Mark:
 Chis. sq. TC W CR
 NW cor. 2nd & Colo.
 Elev. 4577.229

Notes: Concrete Pavement Encountered
 From 1st. to 7th. Street
 Sewer Pipe - Concrete
 Contractor - Parkerson Construction.



- Construction Notes:**
- 1 17+00, 36" STORM
 - 2 17+00, 36" STORM
 - 3 17+00, 36" STORM
 - 4 16+75, 3.0' dia. solid pipe, 143-5, 4-1-R, 2" x 2" PE reducer
 - 5 16+75, 3.0' dia. solid pipe, 2" x 2" PE reducer
 - 6 17+00, 36" STORM
 - 7 17+00, 36" STORM
 - 8 17+00, 36" STORM
 - 9 17+00, 36" STORM
 - 10 17+00, 36" STORM
 - 11 17+00, 36" STORM
 - 12 17+00, 36" STORM
 - 13 17+00, 36" STORM
 - 14 17+00, 36" STORM
 - 15 17+00, 36" STORM
 - 16 17+00, 36" STORM
 - 17 17+00, 36" STORM
 - 18 17+00, 36" STORM
 - 19 17+00, 36" STORM
 - 20 17+00, 36" STORM
 - 21 17+00, 36" STORM
 - 22 17+00, 36" STORM
 - 23 17+00, 36" STORM
 - 24 17+00, 36" STORM
 - 25 17+00, 36" STORM
 - 26 17+00, 36" STORM
 - 27 17+00, 36" STORM
 - 28 17+00, 36" STORM
 - 29 17+00, 36" STORM
 - 30 17+00, 36" STORM
 - 31 17+00, 36" STORM
 - 32 17+00, 36" STORM
 - 33 17+00, 36" STORM
 - 34 17+00, 36" STORM
 - 35 17+00, 36" STORM
 - 36 17+00, 36" STORM
 - 37 17+00, 36" STORM
 - 38 17+00, 36" STORM
 - 39 17+00, 36" STORM
 - 40 17+00, 36" STORM
 - 41 17+00, 36" STORM
 - 42 17+00, 36" STORM
 - 43 17+00, 36" STORM
 - 44 17+00, 36" STORM
 - 45 17+00, 36" STORM
 - 46 17+00, 36" STORM
 - 47 17+00, 36" STORM
 - 48 17+00, 36" STORM
 - 49 17+00, 36" STORM
 - 50 17+00, 36" STORM
 - 51 17+00, 36" STORM
 - 52 17+00, 36" STORM
 - 53 17+00, 36" STORM
 - 54 17+00, 36" STORM
 - 55 17+00, 36" STORM
 - 56 17+00, 36" STORM
 - 57 17+00, 36" STORM
 - 58 17+00, 36" STORM
 - 59 17+00, 36" STORM
 - 60 17+00, 36" STORM
 - 61 17+00, 36" STORM
 - 62 17+00, 36" STORM
 - 63 17+00, 36" STORM
 - 64 17+00, 36" STORM
 - 65 17+00, 36" STORM
 - 66 17+00, 36" STORM
 - 67 17+00, 36" STORM
 - 68 17+00, 36" STORM
 - 69 17+00, 36" STORM
 - 70 17+00, 36" STORM
 - 71 17+00, 36" STORM
 - 72 17+00, 36" STORM
 - 73 17+00, 36" STORM
 - 74 17+00, 36" STORM
 - 75 17+00, 36" STORM
 - 76 17+00, 36" STORM
 - 77 17+00, 36" STORM
 - 78 17+00, 36" STORM
 - 79 17+00, 36" STORM
 - 80 17+00, 36" STORM
 - 81 17+00, 36" STORM
 - 82 17+00, 36" STORM
 - 83 17+00, 36" STORM
 - 84 17+00, 36" STORM
 - 85 17+00, 36" STORM
 - 86 17+00, 36" STORM
 - 87 17+00, 36" STORM
 - 88 17+00, 36" STORM
 - 89 17+00, 36" STORM
 - 90 17+00, 36" STORM
 - 91 17+00, 36" STORM
 - 92 17+00, 36" STORM
 - 93 17+00, 36" STORM
 - 94 17+00, 36" STORM
 - 95 17+00, 36" STORM
 - 96 17+00, 36" STORM
 - 97 17+00, 36" STORM
 - 98 17+00, 36" STORM
 - 99 17+00, 36" STORM
 - 100 17+00, 36" STORM

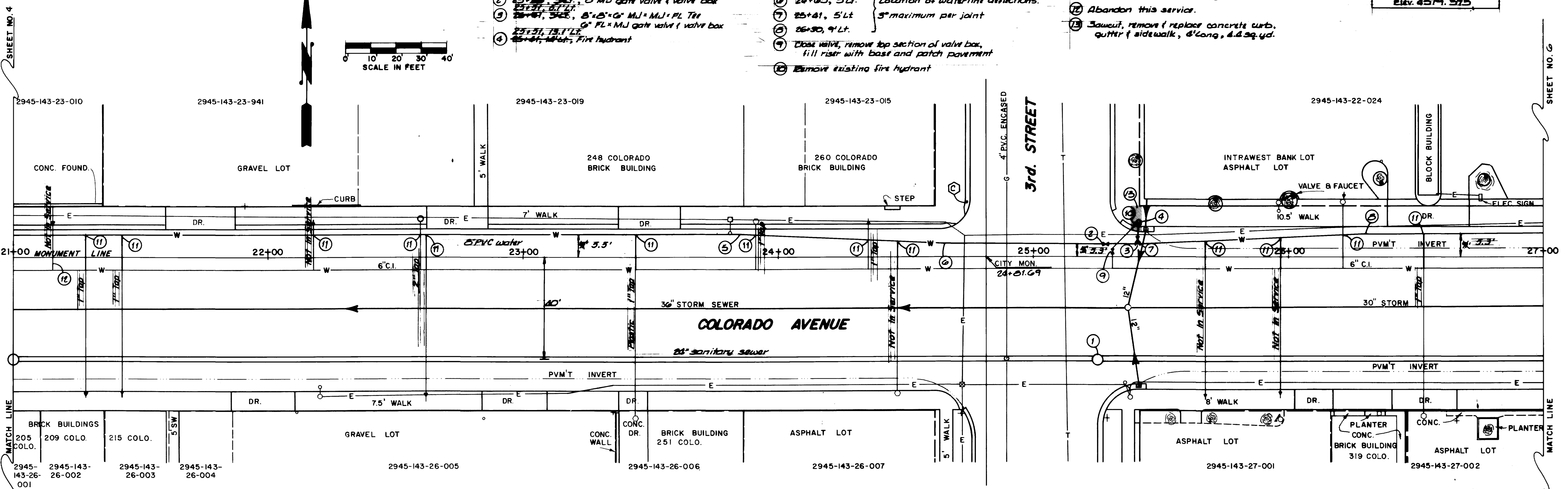
REVISION Δ	DESCRIPTION	DATE	DRAWN BY <u>Lesley</u>	DATE <u>11-85</u>	DEPARTMENT OF PUBLIC WORKS AND UTILITIES ENGINEERING DIVISION CITY OF GRAND JUNCTION, COLORADO	Colorado Avenue Water & Sewer Project Plan & Profile	SHEET NO. <u>4</u> OF <u>25</u> FILE NO.
REVISION Δ			CHECKED BY	DATE			
REVISION Δ			APPROVED BY	DATE			
REVISION Δ			FIELD BOOK NO.	PAGE			

Construction Notes

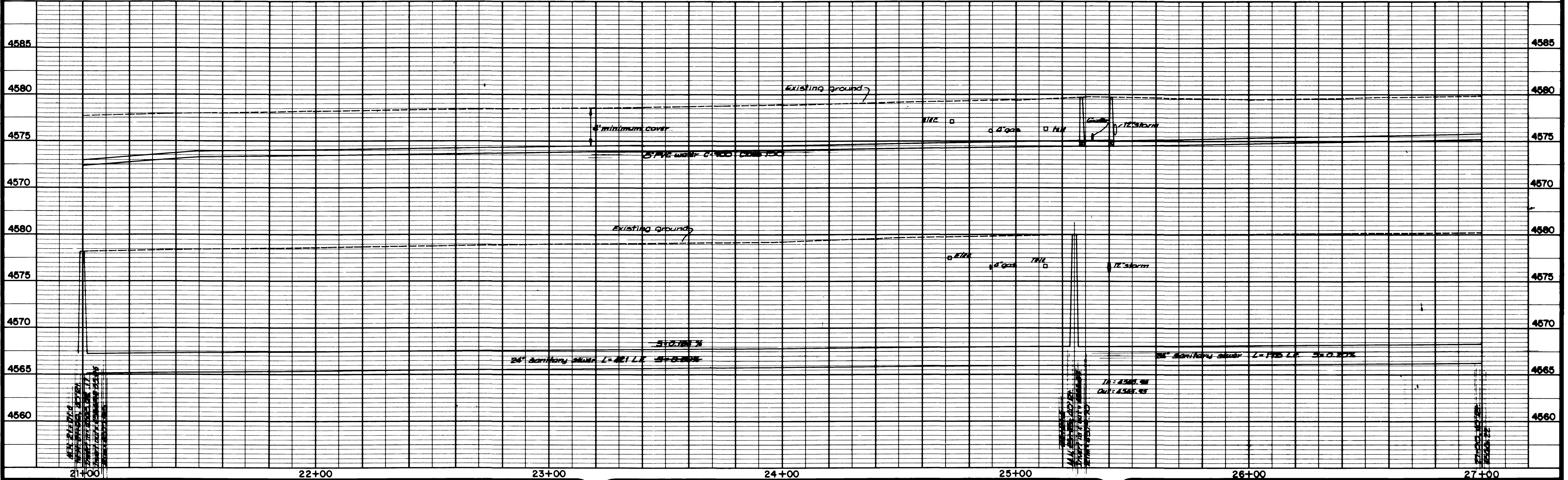
- ① 25" dia. 40' dia. 48" dia. manhole
- ② 25" dia. 40' dia. 48" dia. manhole
- ③ 8" FL x MJ gate valve / valve box
- ④ 6" FL x MJ gate valve / valve box
- ⑤ 25" dia. 9' Lt.
- ⑥ 24" dia. 5' Lt.
- ⑦ 25" dia. 5' Lt.
- ⑧ 26" dia. 9' Lt.
- ⑨ Close valve, remove top section of valve box, fill riser with base and patch pavement
- ⑩ Remove existing fire hydrant

- ⑪ 1" lap, 1" copper service, connect to existing service line with necessary fitting
- ⑫ Abandon this service.
- ⑬ Sawcut, remove & replace concrete curb, gutter & sidewalk, 6' long, 6.6 sq. yd.

Bench Mark:
 Chis. sq. TC N CR
 NW cor. 3rd & Cor.
 Elev. 4574.575



*Note: All Water Taps
 Not Tied Over to
 New Line*



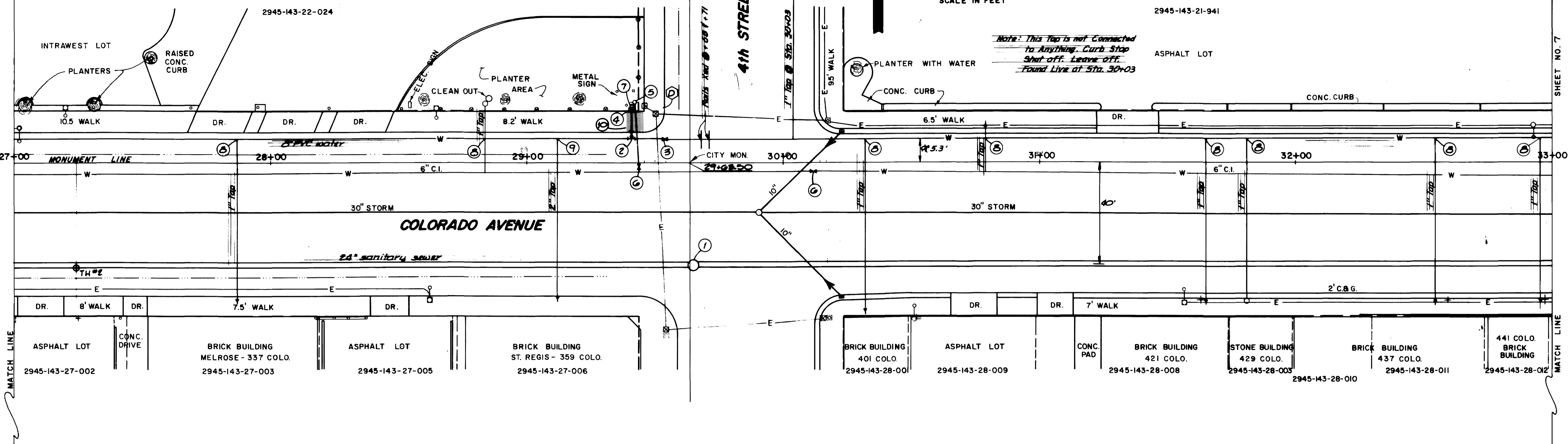
REVISION Δ	DATE	DRAWN BY <u>Looley</u>	DATE <u>11-05</u>	SCALE PLAN: 1"=20' PROFILE: 1"=5' HORIZ. 1"=20' VERT. 1"=5'	DEPARTMENT OF PUBLIC WORKS AND UTILITIES ENGINEERING DIVISION CITY OF GRAND JUNCTION, COLORADO	Colorado Avenue Water & Sewer Project Plan & Profile	SHEET NO. <u>5</u>
REVISION Δ		CHECKED BY	DATE				OF <u>25</u>
REVISION Δ		APPROVED BY	DATE				FILE NO.
REVISION Δ		FIELD BOOK NO.	PAGE				

Construction Notes

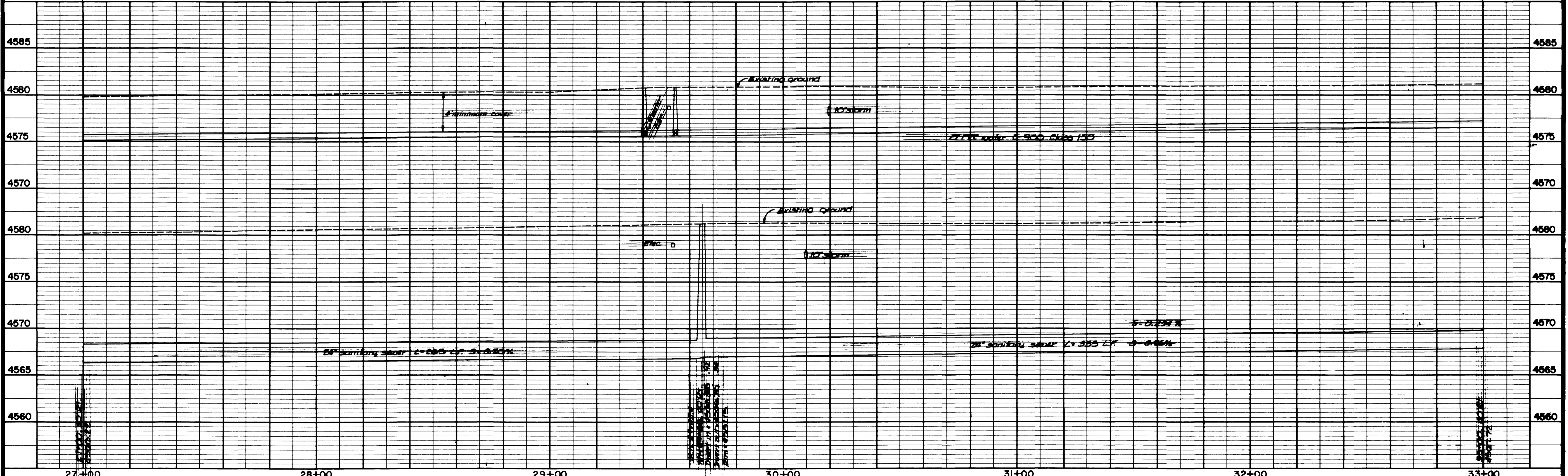
- 1 24" dia. 40' dia. 48" dia. manhole
- 2 24" dia. 40' dia. 48" dia. manhole
- 3 24" dia. 40' dia. 48" dia. manhole
- 4 24" dia. 40' dia. 48" dia. manhole
- 5 24" dia. 40' dia. 48" dia. manhole
- 6 24" dia. 40' dia. 48" dia. manhole
- 7 24" dia. 40' dia. 48" dia. manhole
- 8 24" dia. 40' dia. 48" dia. manhole
- 9 24" dia. 40' dia. 48" dia. manhole
- 10 24" dia. 40' dia. 48" dia. manhole
- 11 24" dia. 40' dia. 48" dia. manhole

- 1 Close valve, remove top section of valve box, fill riser with base and patch pavement.
- 2 Reset sprinkler head
- 3 1" tap, 1" copper service, connect to existing service line with necessary fittings.
- 4 2" tap, 2" copper service, connect to existing service line with necessary fittings.
- 5 Saw cut, remove & replace concrete curb & sidewalk 7' long, 6.2 sq. yds.
- 6 Bails may be encountered while crossing 4th Street. Exact locations not known.

Bench Mark:
 This is W.C.E. NW cor
 4th & Colorado
 Elev. 5551.150



Note: This tap is not connected to anything. Curb Stop Shut-off. Leave off. Found Live at Sta. 30+03



REVISION Δ REVISION Δ REVISION Δ REVISION Δ	DATE DATE DATE DATE	DRAWN BY <u>Lesky</u> DATE <u>11-05</u> CHECKED BY _____ DATE _____ APPROVED BY _____ DATE _____ FIELD BOOK NO. _____ PAGE _____	SCALE PLAN HORIZ. 1" = 20' PROFILE HORIZ. 1" = 20' VERT. 1" = 5'	DEPARTMENT OF PUBLIC WORKS AND UTILITIES ENGINEERING DIVISION CITY OF GRAND JUNCTION, COLORADO	Colorado Avenue Water & Sewer Project Plan & Profile	SHEET NO. <u>6</u> OF <u>25</u> FILE NO.
--	------------------------------	---	---	---	---	--

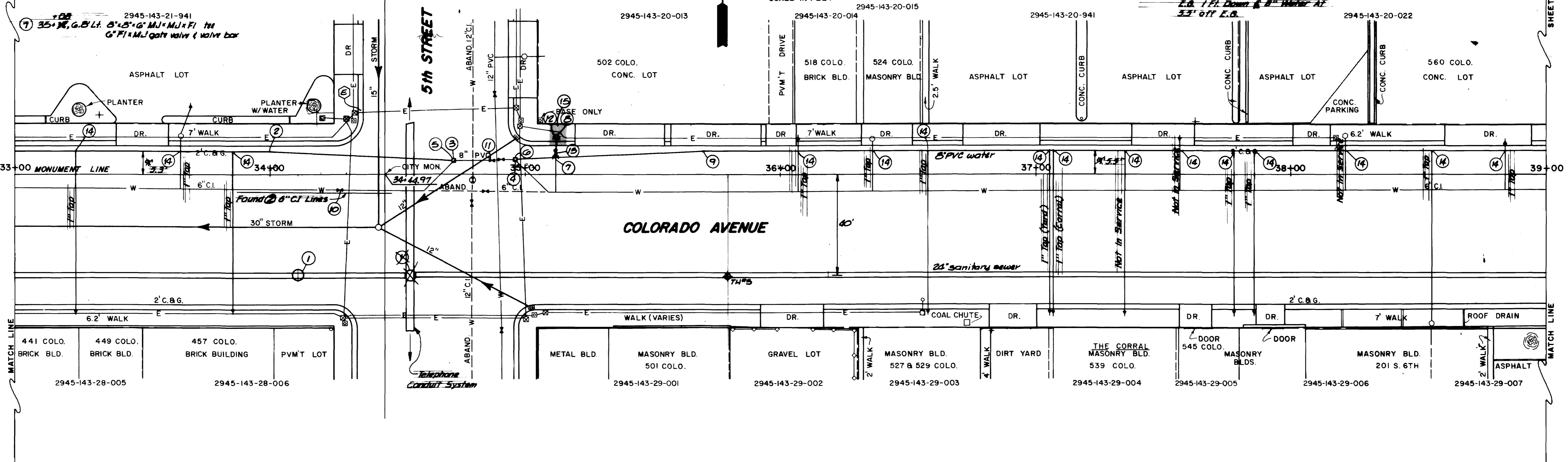
Construction Notes

- ① 34+35, 40' dia. manhole
- ② 33+00, 9' Lt., Begin to deflect waterline, 5" maximum per joint.
- ③ 34+77.5, 5.5' Lt. } 3" solid steels
- ④ 34+90, 5.5' Lt. }
- ⑤ 33+78.5, 5.5' Lt. } Remove existing 8"-85° bend & plug
- ⑥ 34+90, 5.5' Lt. } end of pipe that remains disconnected.

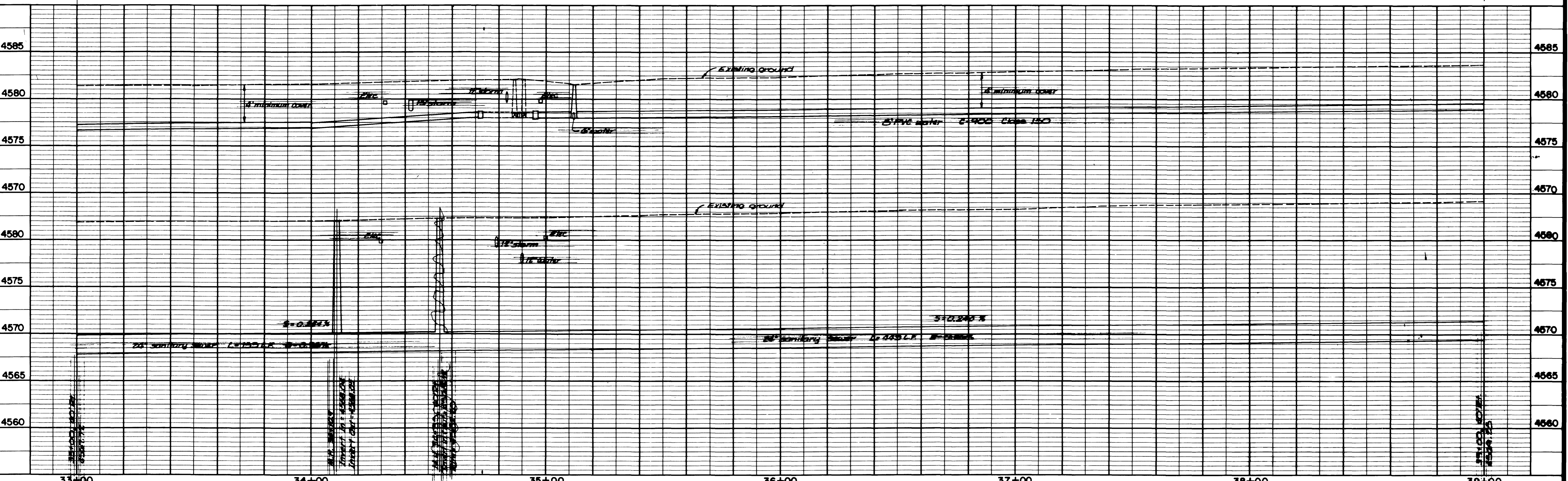
- ⑦ 35+70, 18.5' Lt., fire hydrant.
- ⑧ 35+70, 9' Lt., Begin to deflect waterline, 5" maximum per joint.
- ⑨ Valve is closed, DO NOT OPEN, remove top section of water box, fill riser with base and patch pavement.
- ⑩ Valve is closed at this time.
- ⑪ Remove existing fire hydrant.
- ⑫ Remove valve and valve box. Plug end of pipe.

- ⑬ 1" top, 1" copper service, connect to existing service line with necessary fittings.
- ⑭ Sawcut, remove and replace concrete curb, gutter and sidewalk, 0' long, 6 sq. yds.

Bench Mark:
 (E) Chis. sq. TC NJ CR
 NW cor. 5th & Colo.
 Elev. 4501.540



Note: Concrete Found At 7.5' off North E.B. 1 Ft. Down & 8" Water At 3.3' off E.B.



REVISION A	DESCRIPTION	DATE	DRAWN BY <i>Lesley</i>	DATE <i>11-85</i>
REVISION B			CHECKED BY	DATE
REVISION C			APPROVED BY	DATE
REVISION D			FIELD BOOK NO.	PAGE

**DEPARTMENT OF PUBLIC WORKS AND UTILITIES
 ENGINEERING DIVISION
 CITY OF GRAND JUNCTION, COLORADO**

SCALE
 PLAN 1"=20' PROFILE 1"=20'
 HORIZ. 1"=20' VERT. 1"=5'

**Colorado Avenue Water & Sewer Project
 Plan & Profile**

SHEET NO. 7
 OF 25
 FILE NO.

Construction Notes

- 1) 34" dia manholes
- 2) 34" dia manholes
- 3) 34" dia manholes
- 4) 34" dia manholes

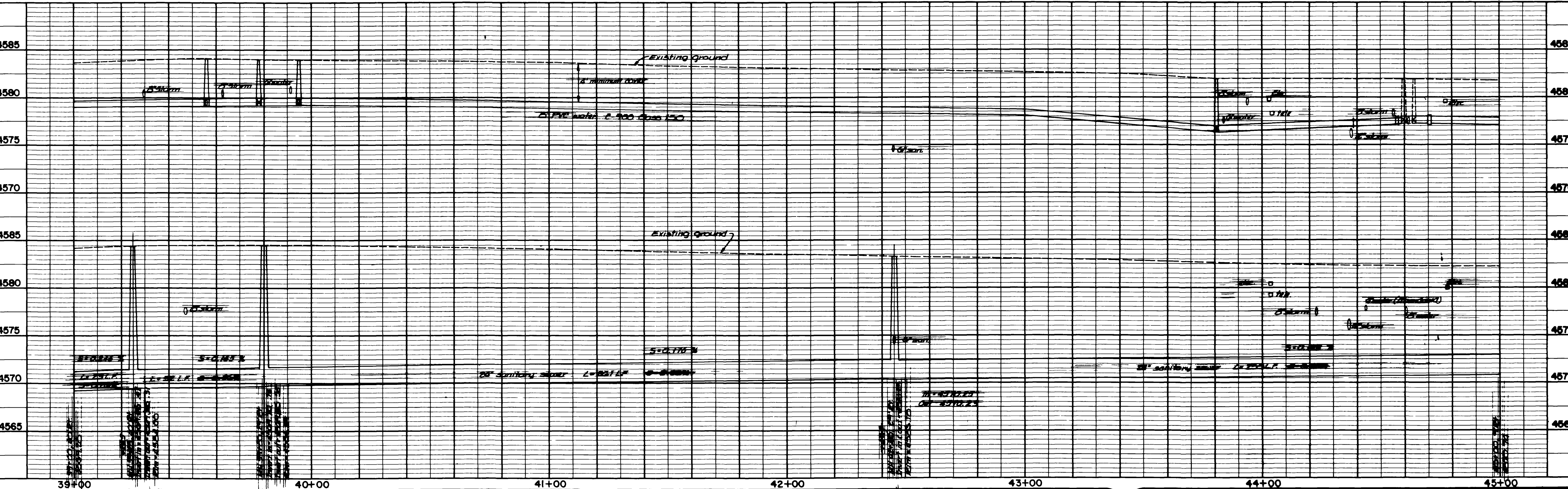
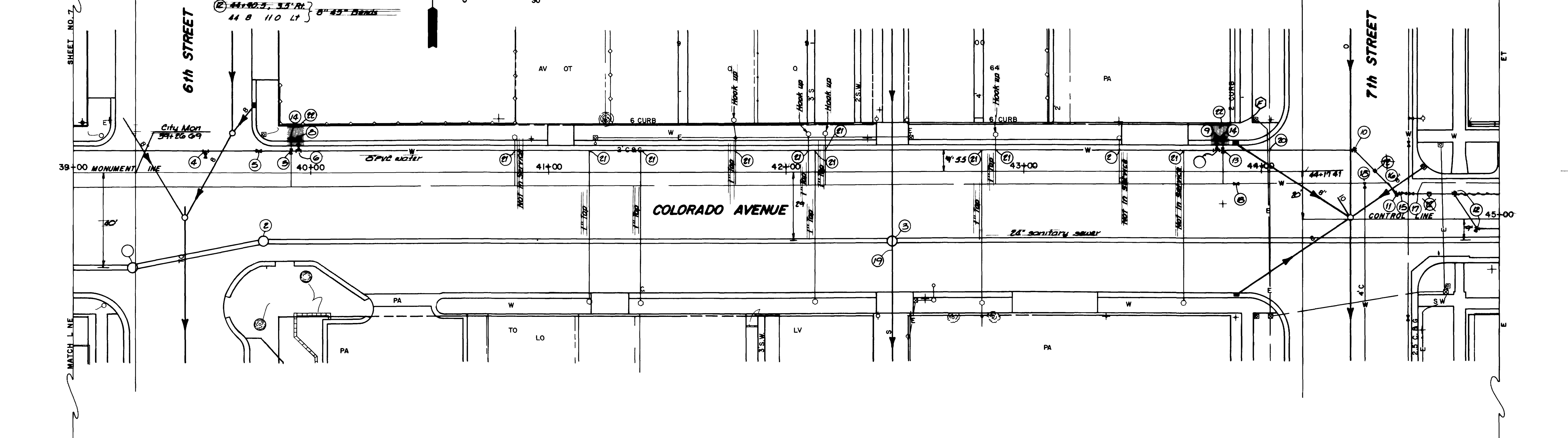
- 5) 6" MJ gate valve & valve box
- 6) 6" MJ gate valve & valve box
- 7) 6" MJ gate valve & valve box
- 8) 6" MJ gate valve & valve box
- 9) 6" MJ gate valve & valve box
- 10) 6" MJ gate valve & valve box
- 11) 6" MJ gate valve & valve box
- 12) 6" MJ gate valve & valve box
- 13) 6" MJ gate valve & valve box
- 14) 6" MJ gate valve & valve box
- 15) 6" MJ gate valve & valve box
- 16) 6" MJ gate valve & valve box
- 17) 6" MJ gate valve & valve box
- 18) 6" MJ gate valve & valve box
- 19) 6" MJ gate valve & valve box
- 20) 6" MJ gate valve & valve box
- 21) 6" MJ gate valve & valve box
- 22) 6" MJ gate valve & valve box
- 23) 6" MJ gate valve & valve box
- 24) 6" MJ gate valve & valve box
- 25) 6" MJ gate valve & valve box
- 26) 6" MJ gate valve & valve box
- 27) 6" MJ gate valve & valve box
- 28) 6" MJ gate valve & valve box
- 29) 6" MJ gate valve & valve box
- 30) 6" MJ gate valve & valve box
- 31) 6" MJ gate valve & valve box
- 32) 6" MJ gate valve & valve box
- 33) 6" MJ gate valve & valve box
- 34) 6" MJ gate valve & valve box
- 35) 6" MJ gate valve & valve box
- 36) 6" MJ gate valve & valve box
- 37) 6" MJ gate valve & valve box
- 38) 6" MJ gate valve & valve box
- 39) 6" MJ gate valve & valve box
- 40) 6" MJ gate valve & valve box
- 41) 6" MJ gate valve & valve box
- 42) 6" MJ gate valve & valve box
- 43) 6" MJ gate valve & valve box
- 44) 6" MJ gate valve & valve box
- 45) 6" MJ gate valve & valve box
- 46) 6" MJ gate valve & valve box
- 47) 6" MJ gate valve & valve box
- 48) 6" MJ gate valve & valve box
- 49) 6" MJ gate valve & valve box
- 50) 6" MJ gate valve & valve box

- 1) 6" solid sleeve to connect 6" PVC pipe - location may vary as necessary
- 2) Remove valve & valve box. Plug end of pipe
- 3) Remove existing fire hydrant
- 4) Remove reducer and 45° bend as necessary to make connections
- 5) Remove 45° bend & plug end of pipe

- 6) Remove reducer & 45° bend & plug end of pipe
- 7) Close valve, remove top section of valve box & fill with base & patio pavement
- 8) 6" sanitary sewer to run through the manhole. Connection to new sewer to be made in the future
- 9) Pot hole existing telephone conduit to verify situation

- 10) 1" lap copper service connect to existing service line with necessary fittings
- 11) Sawcut, remove & replace concrete curb, gutter & sidewalk. 7' long, 14 sq yds total

BENCH MARK
 CHIS SQ. 2000 int
 N10 cor 7th & Colo
 Elev. 4562.54



REVISION	DESCRIPTION	DATE	DRAWN BY	DATE	CHECKED BY	DATE
REVISION A			LO/ky	11/05		
REVISION B						
REVISION C						
REVISION D						
REVISION E						

DEPARTMENT OF PUBLIC WORKS AND UTILITIES
ENGINEERING DIVISION
CITY OF GRAND JUNCTION, COLORADO

Colorado Avenue Water & Sewer Project
 Plan & Profile

SHEET NO. **6**
 OF **25**
 FILE NO.

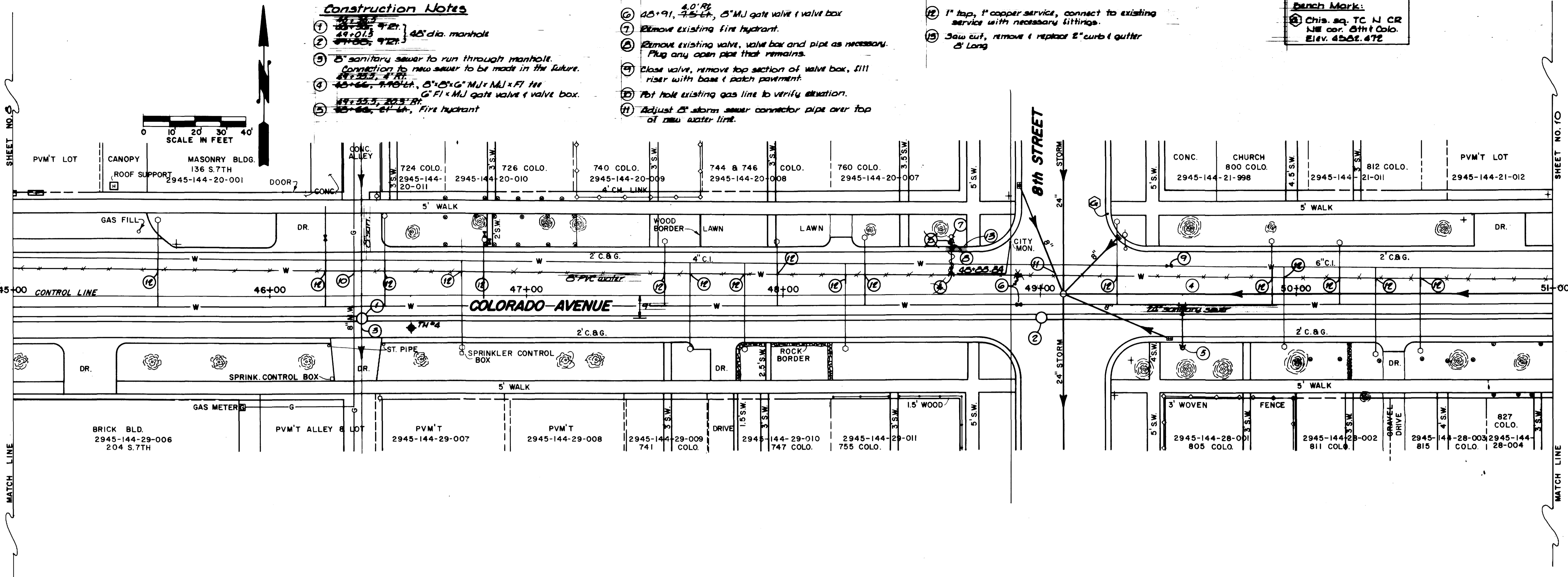
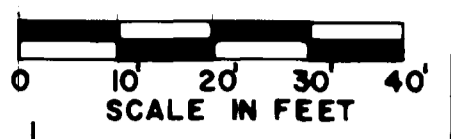
Construction Notes

- ① 48" dia. manhole
- ② 8" sanitary sewer to run through manhole. Connection to new sewer to be made in the future.
- ③ 48" dia. 4' dia. 8" FI x MJ gate valve & valve box
- ④ 48" dia. 4' dia. 8" FI x MJ gate valve & valve box
- ⑤ 48" dia. 4' dia. Fire hydrant

- ⑥ 48" x 91" 4.5' dia. 8" MJ gate valve & valve box
- ⑦ Remove existing fire hydrant.
- ⑧ Remove existing valve, valve box and pipe as necessary. Plug any open pipe that remains.
- ⑨ Close valve, remove top section of valve box, fill riser with base & patch pavement.
- ⑩ Pot hole existing gas line to verify situation.
- ⑪ Adjust 8" storm sewer connector pipe over top of new water line.

- ⑫ 1" tap, 1" copper service, connect to existing service with necessary fittings.
- ⑬ Saw cut, remove & replace 2" curb & gutter 8' Long

Punch Mark:
 ⑭ Chis. sq. TC NJ CR
 NE cor. 8th Colo.
 Elev. 4567.472

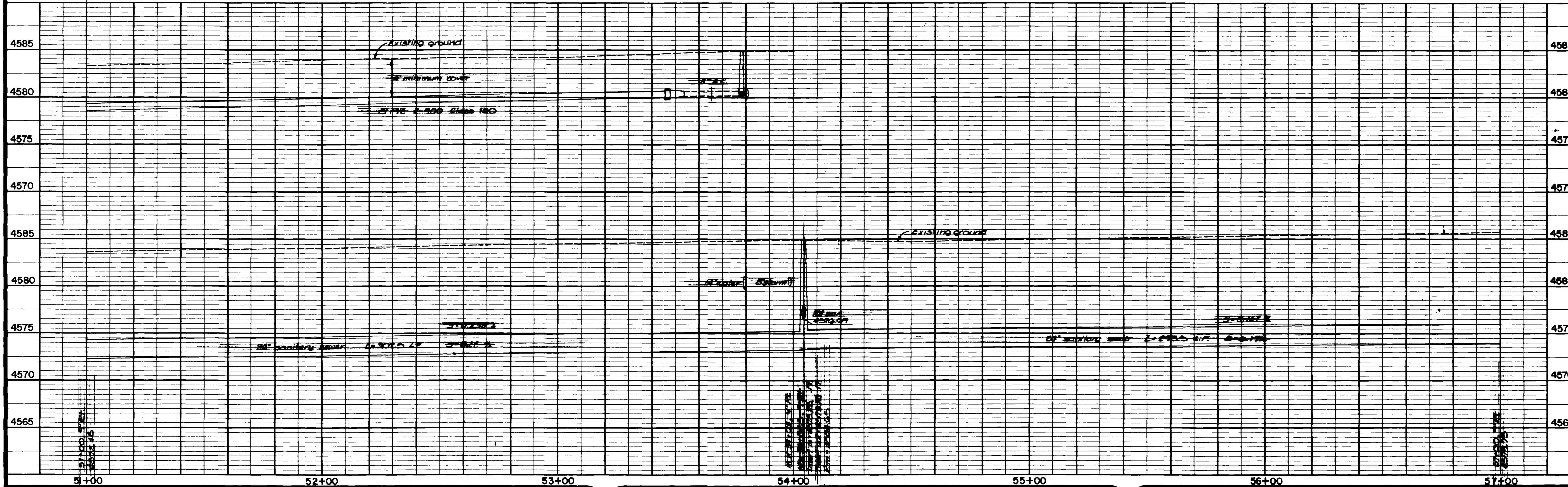
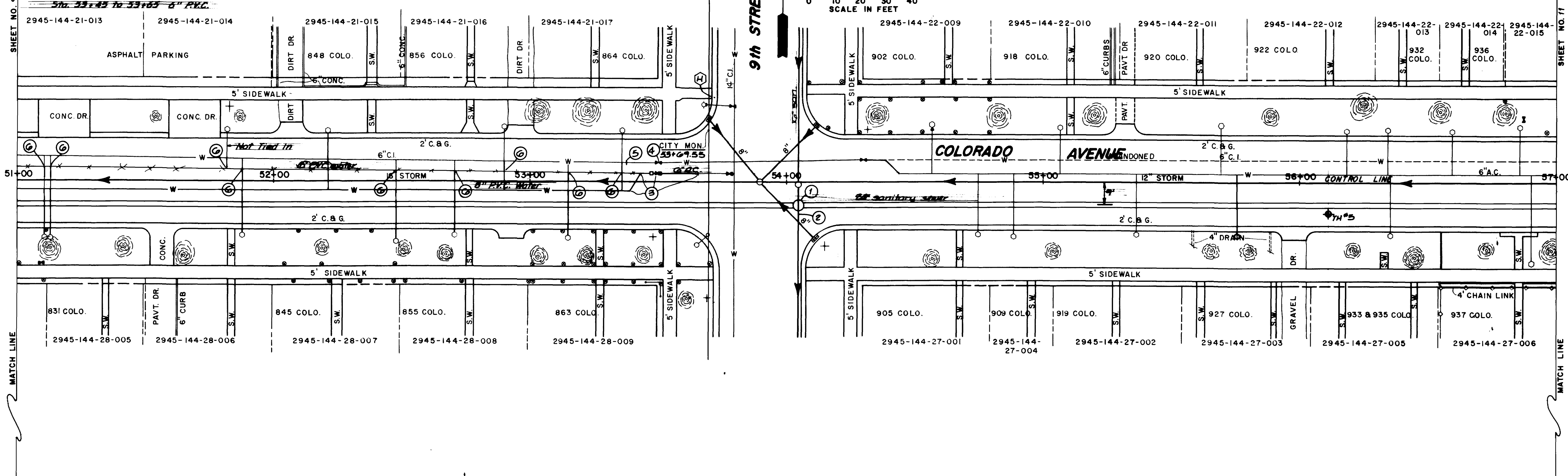


REVISION Δ	DATE	DRAWN BY <i>Lesley</i>	DATE <i>11-05</i>	DEPARTMENT OF PUBLIC WORKS AND UTILITIES ENGINEERING DIVISION CITY OF GRAND JUNCTION, COLORADO	Colorado Avenue Water & Sewer Project Plan & Profile	SHEET NO. <i>9</i>
REVISION Δ		CHECKED BY	DATE			OF <i>25</i>
REVISION Δ		APPROVED BY	DATE			FILE NO.
REVISION Δ		FIELD BOOK NO.	PAGE			

Construction Notes

- ① 54+04.5, 9' dia., 48" dia. manhole
- ② 10" sanitary sewer to run through manhole. Connection to new sewer to be made in the future.
- ③ 53+51, 3' LT., 8" sch. 40 pipe
- ④ 53+45, 3' LT., 8" x 6" PE x PE reducer
- ⑤ 53+43, 9' LT., 43" Band B
- ⑥ 53+39, 3' RT., 43" Band B
- ⑦ 53+45 to 53+65 6" P.V.C.
- ⑧ Flow valve, remove top section of valve box, fill riser with base and patch pavement.
- ⑨ 53+35, cut and cap end of pipe, pour thrust block.
- ⑩ 1" top, 1" copper service, connect to existing service line with necessary fittings

Bench Mark:
 Chis. X on TC N CR
 NW cor. 9th & Colo.
 Elev. 4504.047



REVISION Δ	DATE	DRAWN BY <i>Lesley</i>	DATE <i>11-05</i>	SCALE			
REVISION Δ		CHECKED BY	DATE	PLAN	PROFILE		
REVISION Δ		APPROVED BY	DATE	HORIZ. 1"=20'	HORIZ. 1"=20'		
REVISION Δ		FIELD BOOK NO.	PAGE	VERT. 1"=5'	VERT. 1"=5'		

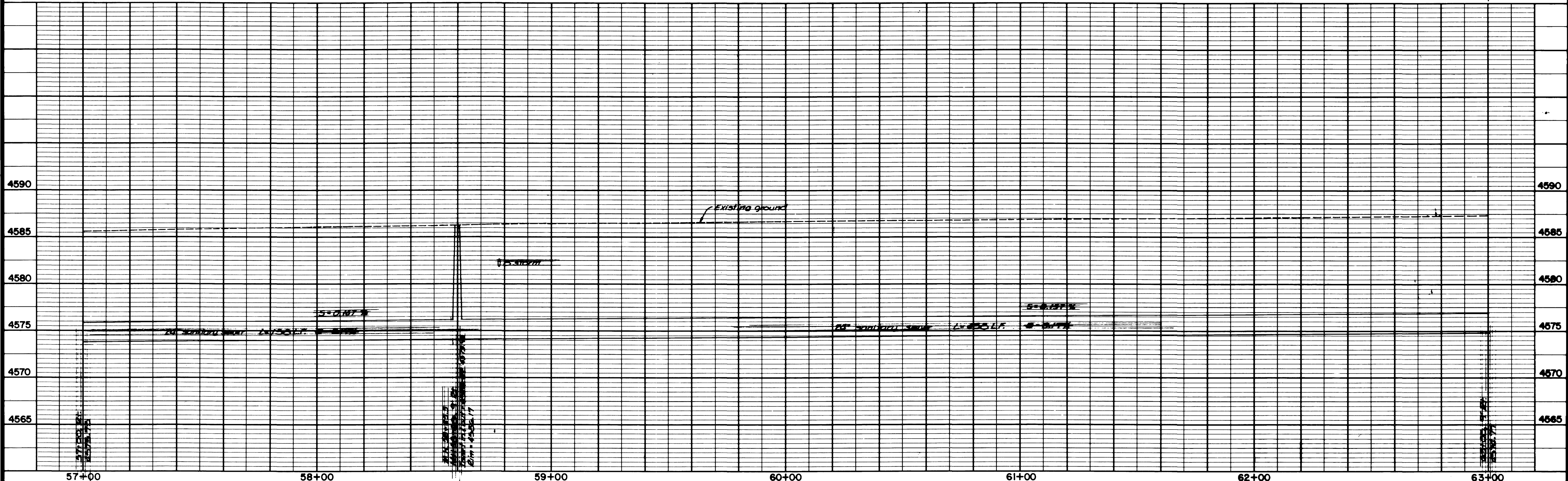
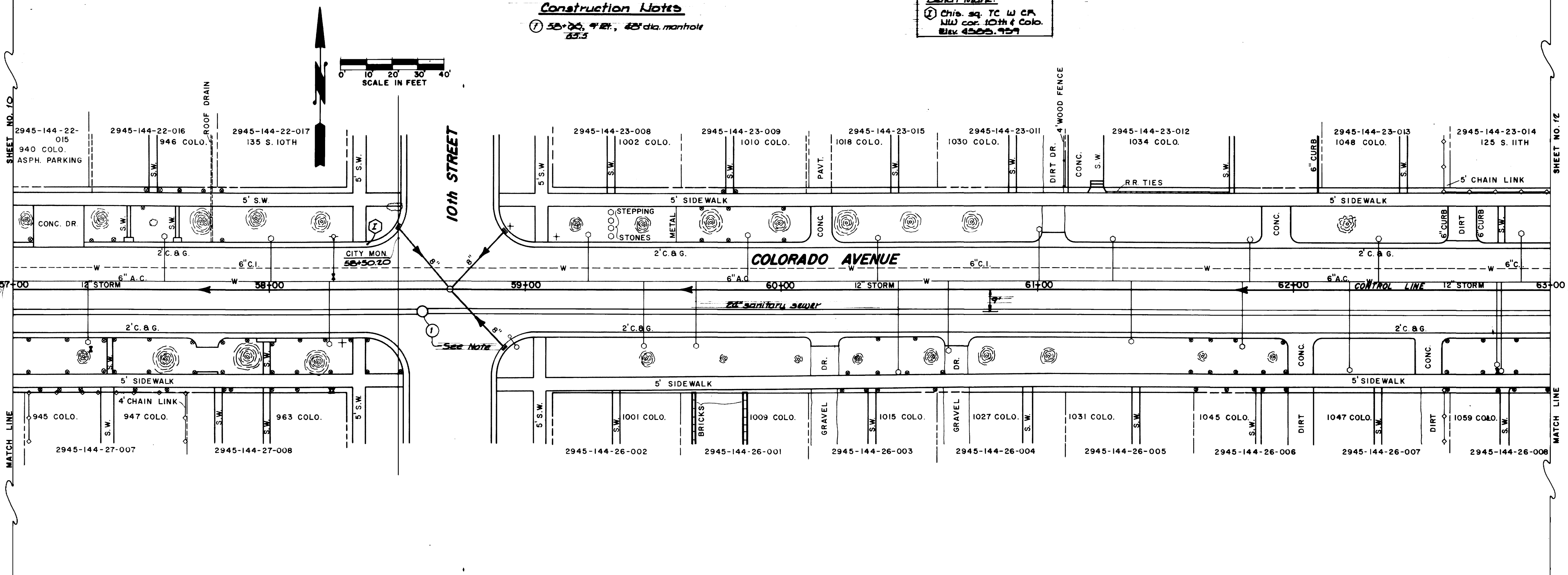
DEPARTMENT OF PUBLIC WORKS AND UTILITIES
 ENGINEERING DIVISION
 CITY OF GRAND JUNCTION, COLORADO

Colorado Avenue Water & Sewer Project
 Plan & Profile

SHEET NO. 10
 OF 25
 FILE NO.

Construction Notes
 ① 58'-00" 4" dia. 48" dia. manhole
 231.3

UTILITY MAP:
 ① This sq. TC W CA
 NW cor. 10th & Colo.
 Elev. 4565.957



REVISION Δ	DESCRIPTION	DATE	DRAWN BY <i>Lesley</i>	DATE <i>11-05</i>
REVISION Δ			CHECKED BY	DATE
REVISION Δ			APPROVED BY	DATE
REVISION Δ			FIELD BOOK NO.	PAGE

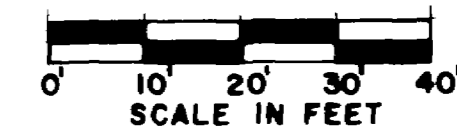
SCALE
 PLAN HORIZ. 1"=20'
 PROFILE VERT. 1"=5'

DEPARTMENT OF PUBLIC WORKS AND UTILITIES
ENGINEERING DIVISION
CITY OF GRAND JUNCTION, COLORADO

Colorado Avenue Water & Sewer Project
 Plan & Profile

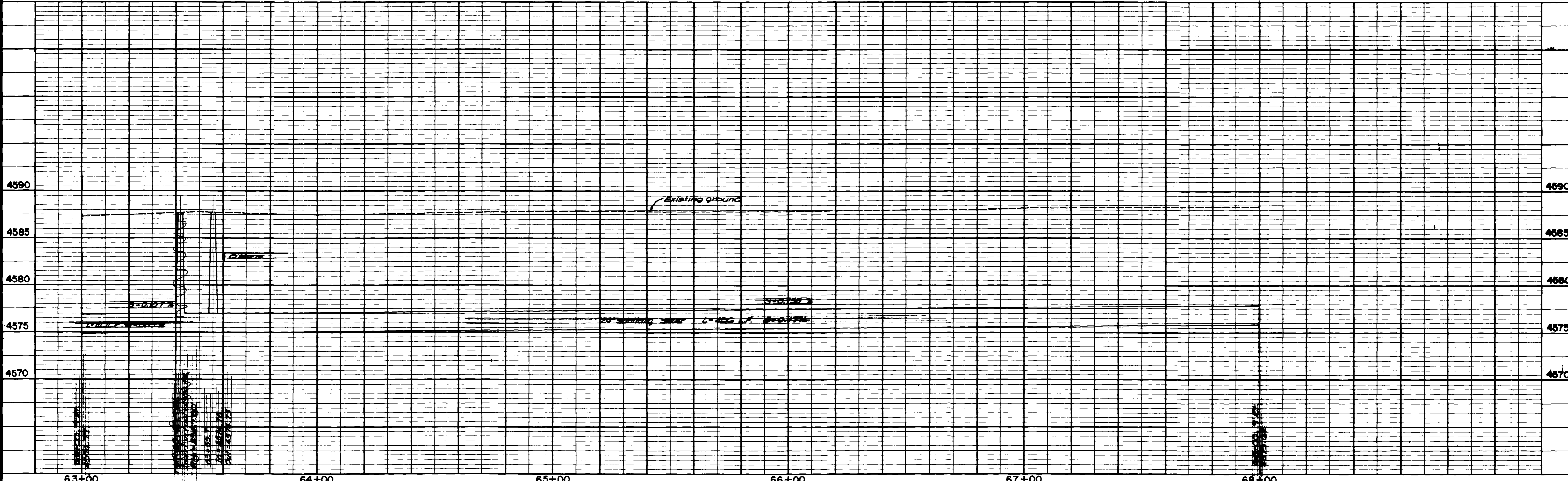
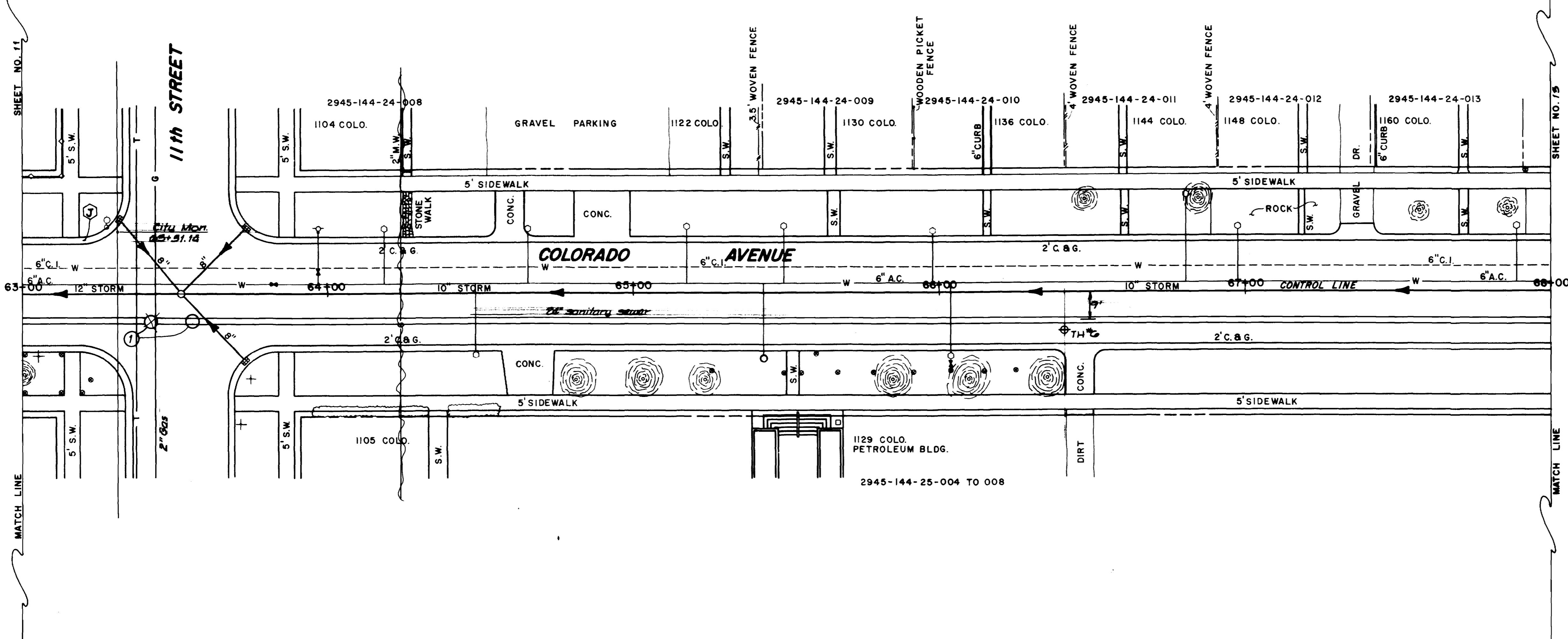
SHEET NO. *11*
 OF *25*
 FILE NO.

Bench Mark:
 Chis. sq. TC W CR
 NW cor. 11th & Colo.
 Elev. 4557.102



Construction Notes

- ① 63+46.9' 42" dia. manhole 63+55.7



REVISION	DESCRIPTION	DATE

DRAWN BY Lesley DATE 11-05
 CHECKED BY _____ DATE _____
 APPROVED BY _____ DATE _____
 FIELD BOOK NO. _____ PAGE _____

SCALE
 PLAN 1" = 20'
 PROFILE 1" = 5'

DEPARTMENT OF PUBLIC WORKS AND UTILITIES
ENGINEERING DIVISION
CITY OF GRAND JUNCTION, COLORADO

Colorado Avenue Water & Sewer Project
 Plan & Profile

SHEET NO. 18
 OF 25
 FILE NO. _____

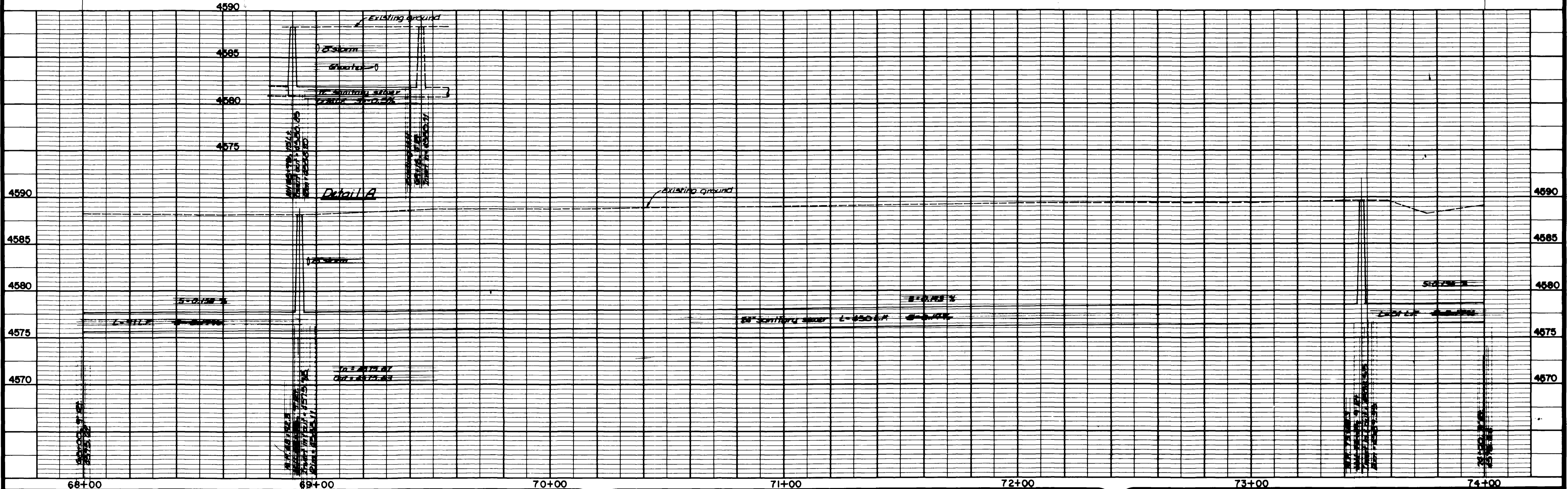
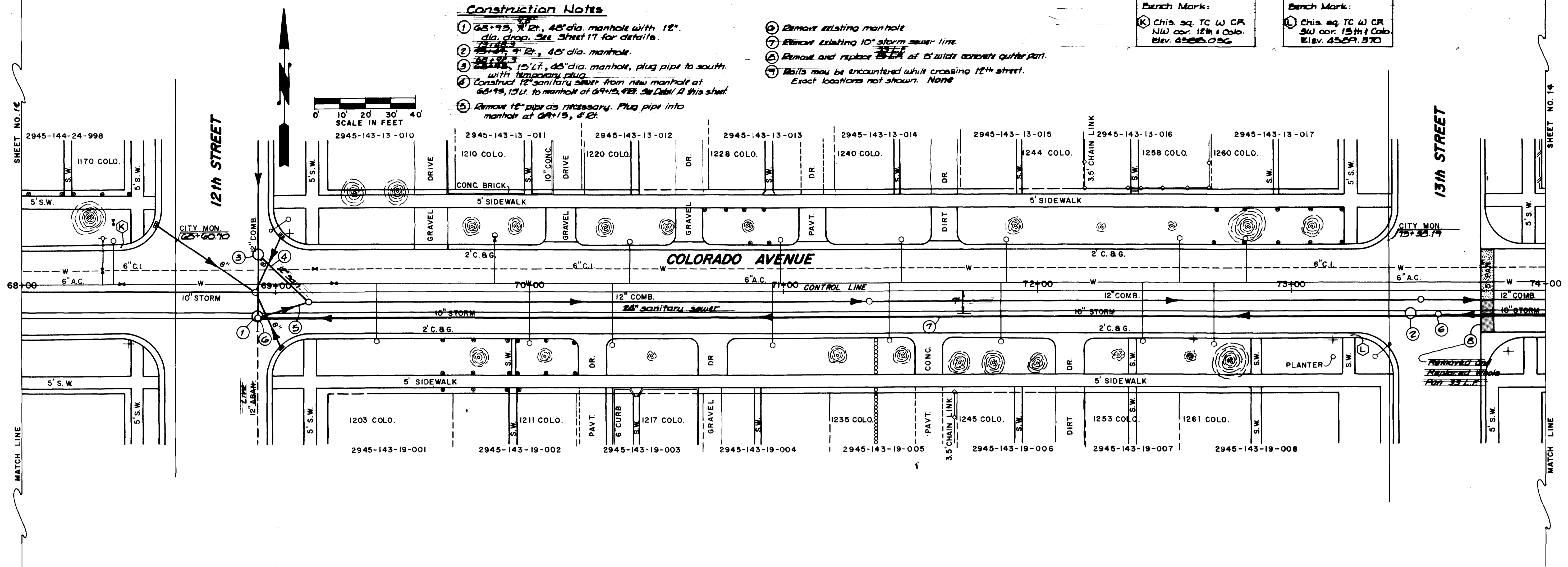
Construction Notes

- 1 68+93, 12" dia., 48" dia. manhole with 12" dia. drop. See Sheet 17 for details.
- 2 69+15, 12" dia., 48" dia. manhole.
- 3 69+93, 15" dia., 48" dia. manhole, plug pipe to south with temporary plug.
- 4 Construct 12" sanitary sewer from new manhole at 68+93, 15' Lt. to manhole at 69+15, 48". See Detail A this sheet.
- 5 Remove 12" pipe as necessary. Plug pipe into manhole at 69+15, 48'.

- 6 Remove existing manhole
- 7 Remove existing 10" storm sewer line.
- 8 Remove and replace 25' of 5" wide concrete gutter pan.
- 9 Drills may be encountered while crossing 12th street. Exact locations not shown. None

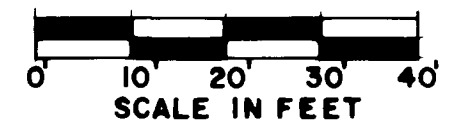
Bench Mark:
 K Chis. sq. TC W CR
 NW cor. 12th & Colo.
 Elev. 4566.056

Bench Mark:
 L Chis. sq. TC W CR
 SW cor. 13th & Colo.
 Elev. 4569.570

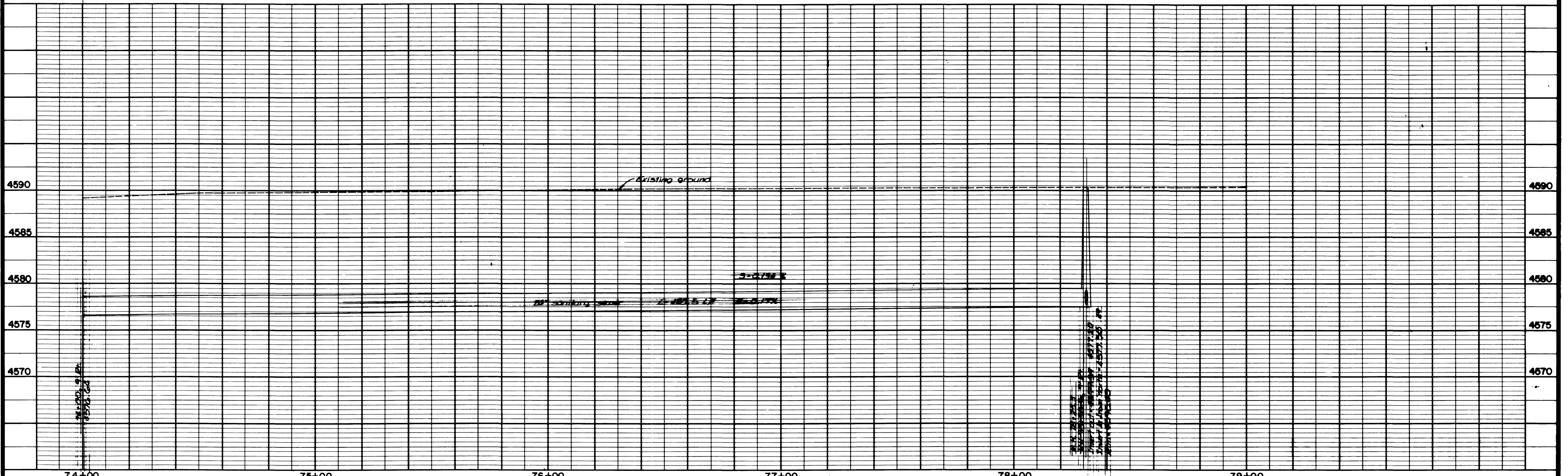
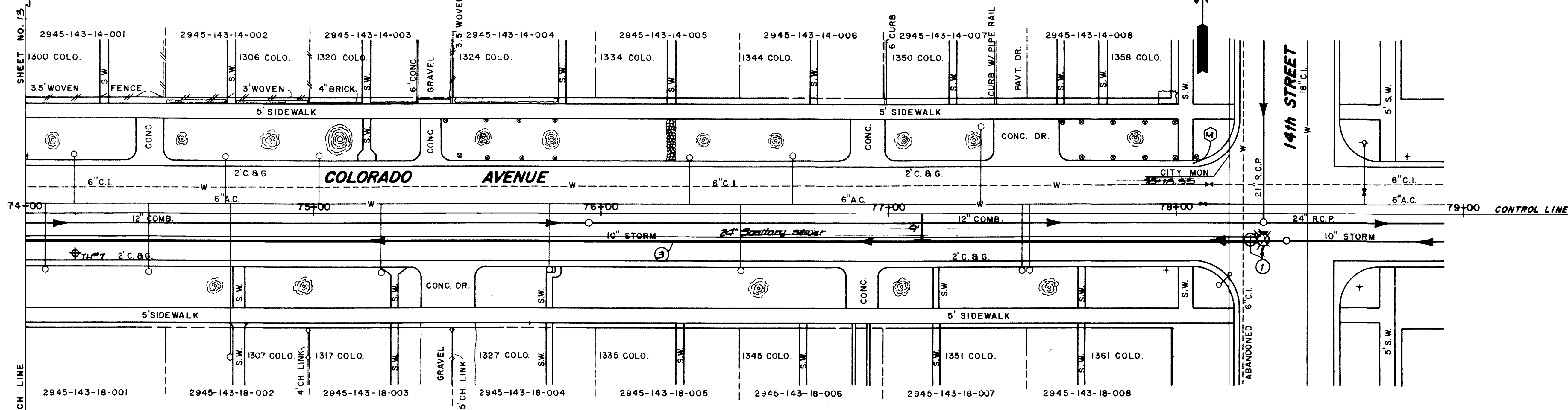


REVISION A _____ REVISION B _____ REVISION C _____ REVISION D _____	DESCRIPTION _____ DATE _____	DRAWN BY <u>Lesley</u> DATE <u>11-25</u> CHECKED BY _____ DATE _____ APPROVED BY _____ DATE _____ FIELD BOOK NO. _____ PAGE _____	SCALE PLAN HORIZ. 1"=20' PROFILE HORIZ. 1"=20' VERT. 1"=5'	DEPARTMENT OF PUBLIC WORKS AND UTILITIES ENGINEERING DIVISION CITY OF GRAND JUNCTION, COLORADO	Colorado Avenue Water & Sewer Project Plan & Profile	SHEET NO. <u>15</u> OF <u>25</u> FILE NO. _____
--	---------------------------------	--	---	---	---	---

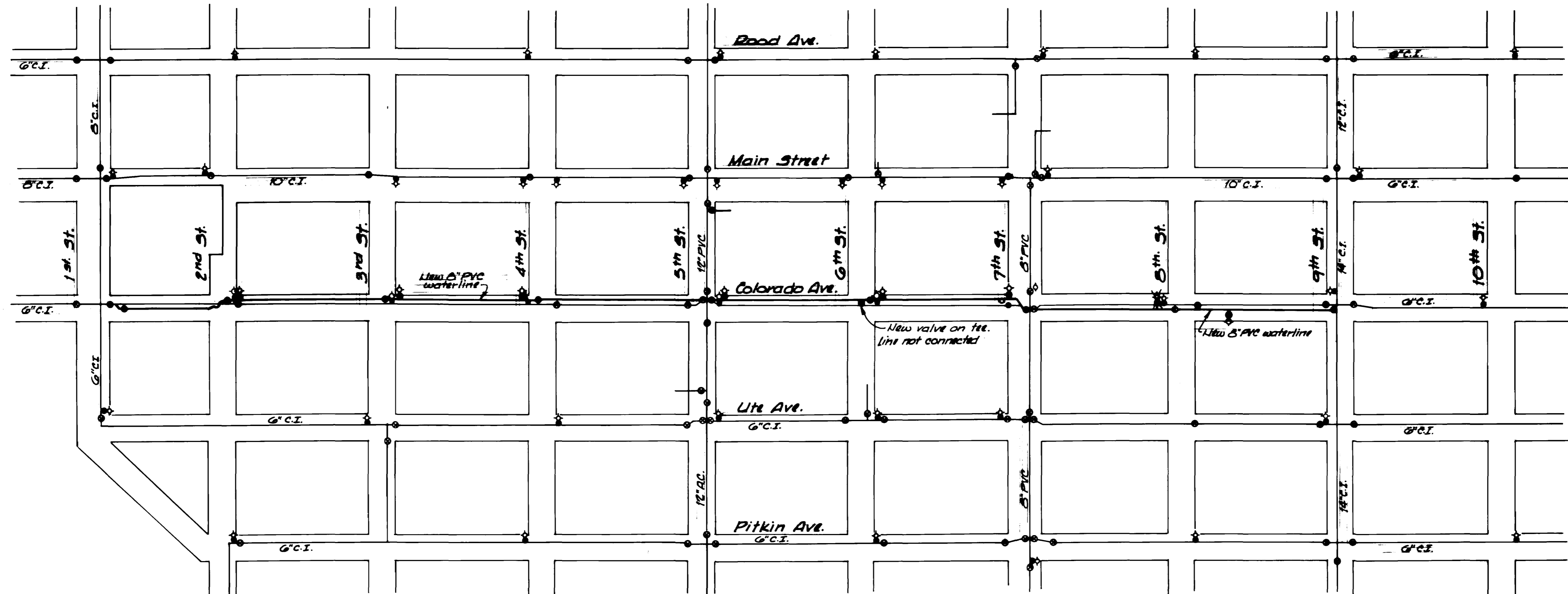
Pinch Marks:
 1) Chis. sq. TC W CR
 NW cor. 14th & Colo.
 Elev. 4590.089



- Construction Notes**
- 1) 10" dia. manhole at 75+35.5, 10' dia. manhole at 75+35.5, 10' dia. manhole at 75+35.5.
 - 2) 3' dia. cap 1 L.F. 24" sanitary sewer to north
 - 3) Remove existing 10" storm sewer line to manhole at 75+35.5, 9.5' dia. Plug pipe at manhole.



REVISION Δ _____ REVISION Δ _____ REVISION Δ _____	DESCRIPTION _____ DATE _____	DRAWN BY <u>Lesley</u> DATE <u>11-05</u> CHECKED BY _____ DATE _____ APPROVED BY _____ DATE _____ FIELD BOOK NO. _____ PAGE _____	SCALE PLAN HORIZ. 1"=20' PROFILE HORIZ. 1"=20' VERT. 1"=5'	DEPARTMENT OF PUBLIC WORKS AND UTILITIES ENGINEERING DIVISION CITY OF GRAND JUNCTION, COLORADO	Colorado Avenue Water & Sewer Project Plan & Profile	SHEET NO. <u>14</u> OF <u>25</u> FILE NO. _____
---	---------------------------------	--	---	---	---	---



REVISION	DESCRIPTION	DATE	DRAWN BY	DATE	CHECKED BY	DATE	APPROVED BY	DATE	FIELD BOOK NO.	PAGE
REVISION			Lesley							
REVISION										
REVISION										
REVISION										

SCALE	
PLAN	PROFILE
HORIZ. 1/4" = 1'	HORIZ. _____
VERT. _____	VERT. _____

DEPARTMENT OF PUBLIC WORKS AND UTILITIES
ENGINEERING DIVISION
CITY OF GRAND JUNCTION, COLORADO

Colorado Avenue Water & Sewer Project
Waterline Master Plan

SHEET NO. 15
 OF 25
 FILE NO. _____

1st Street

2nd Street

3rd Street

4th Street

5th Street

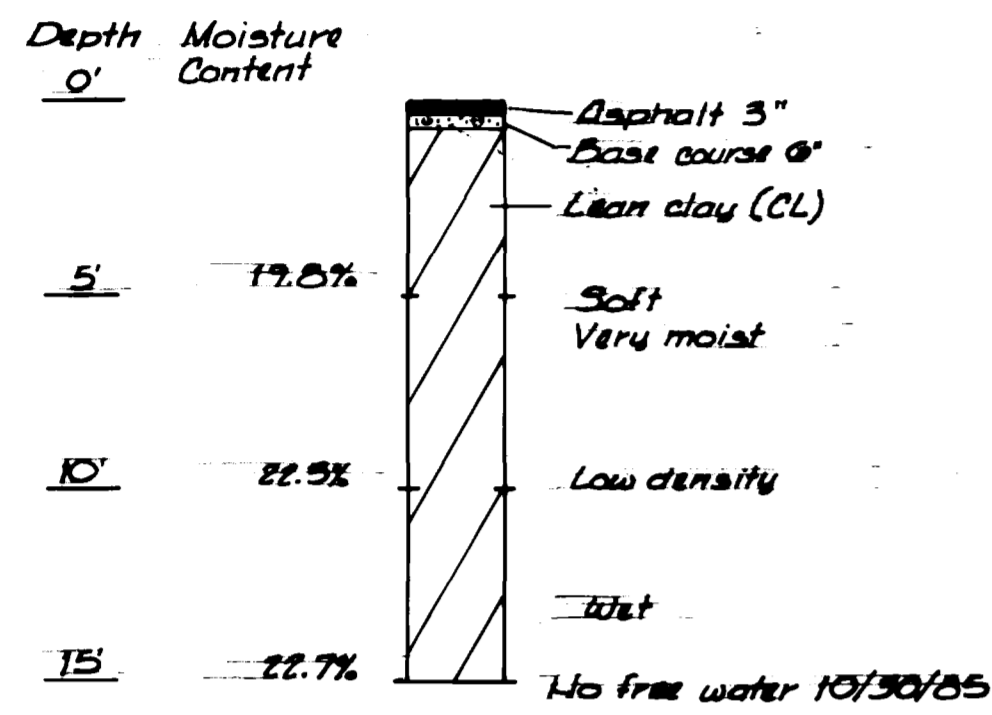
6th Street

7th Street

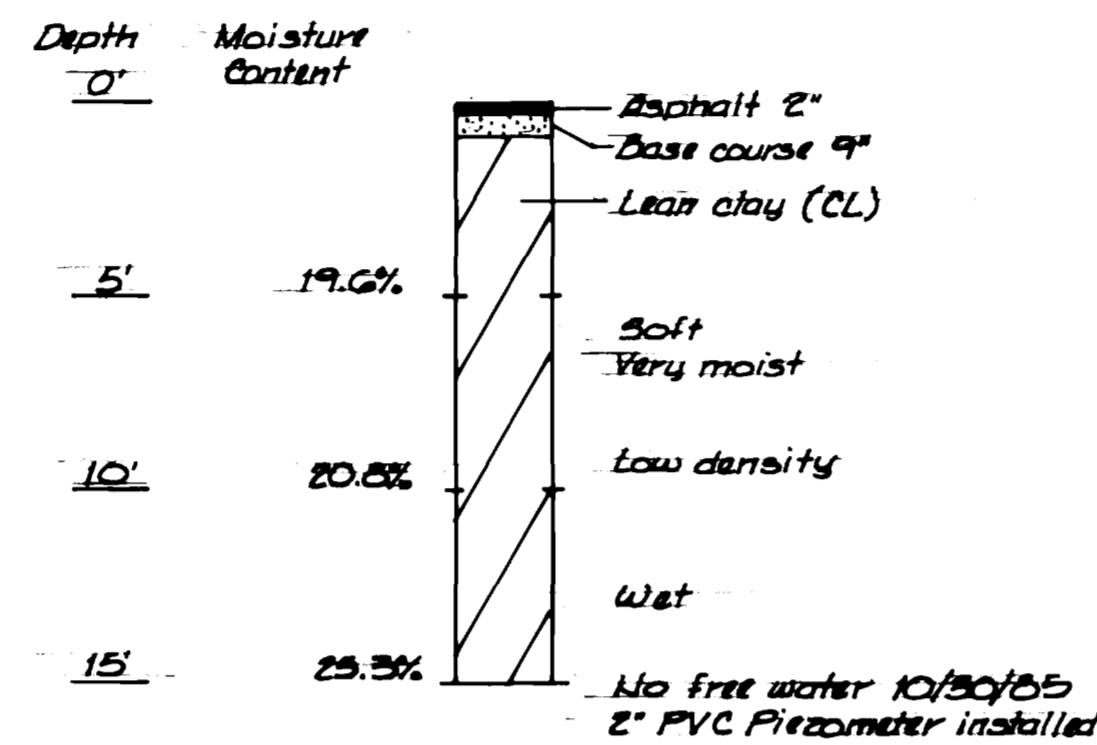
TH#1

TH#2

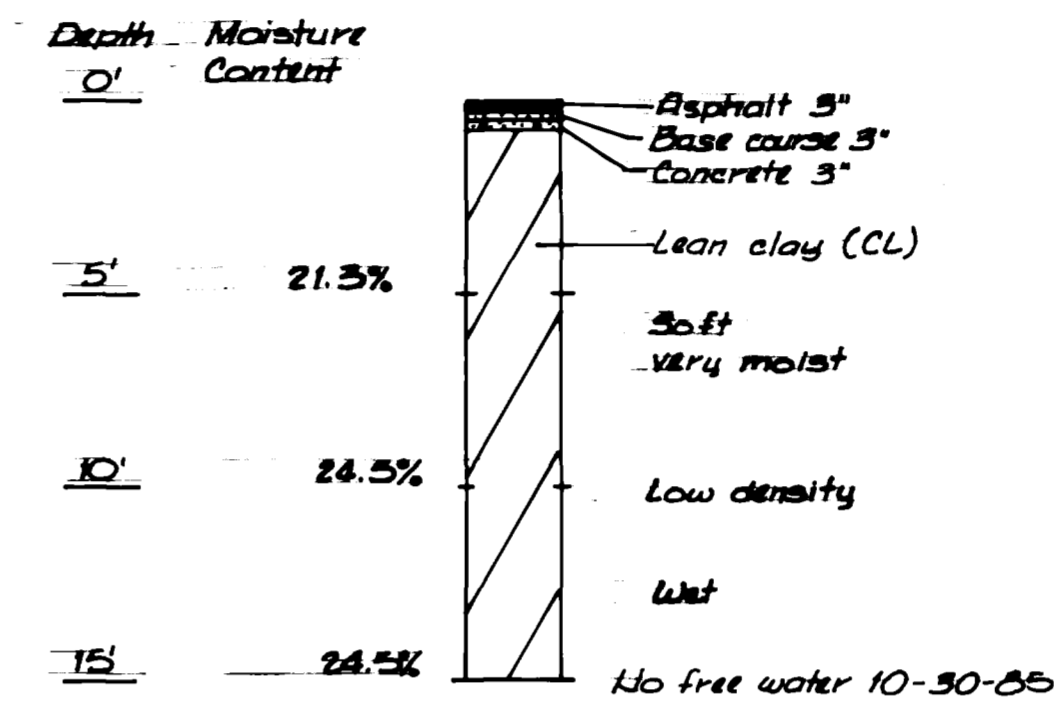
TH#3



TH#1



TH#2



TH#3

7th Street

8th Street

9th Street

10th Street

11th Street

12th Street

13th Street

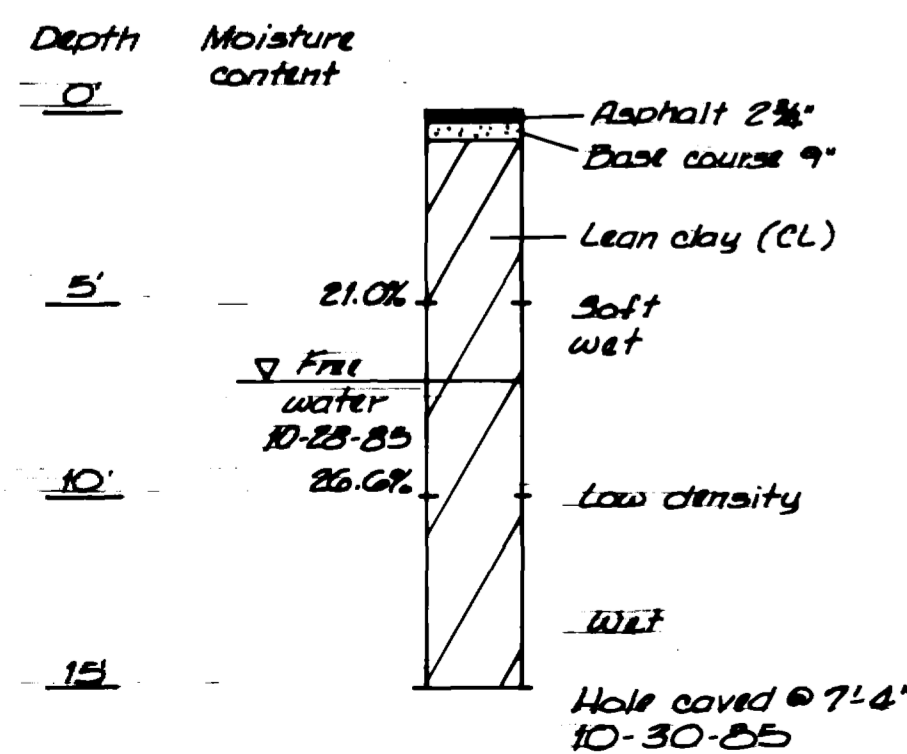
14th Street

TH#4

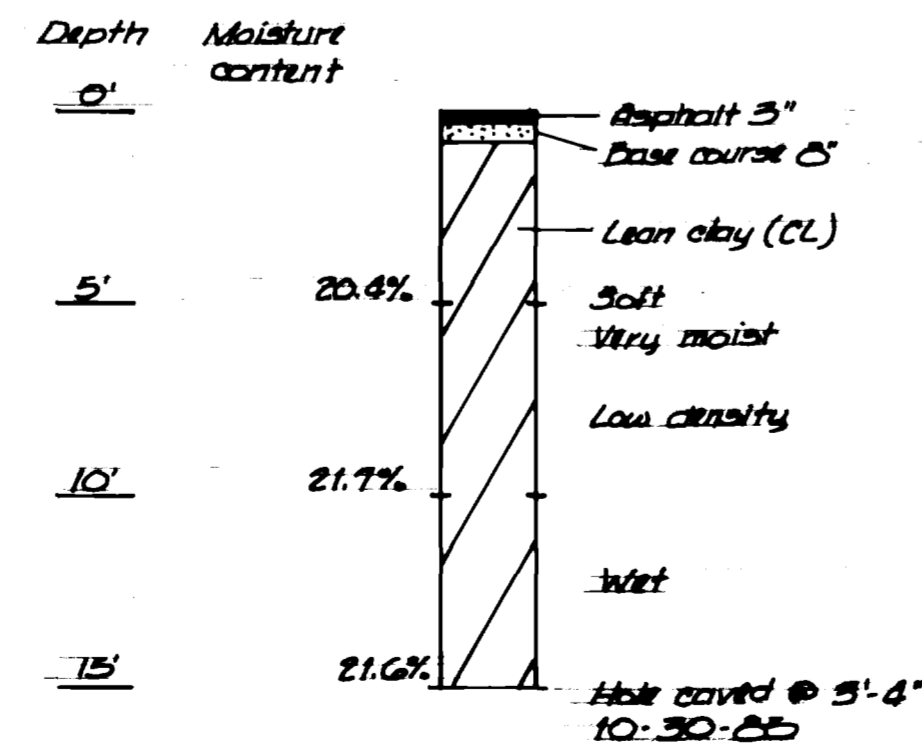
TH#5

TH#6

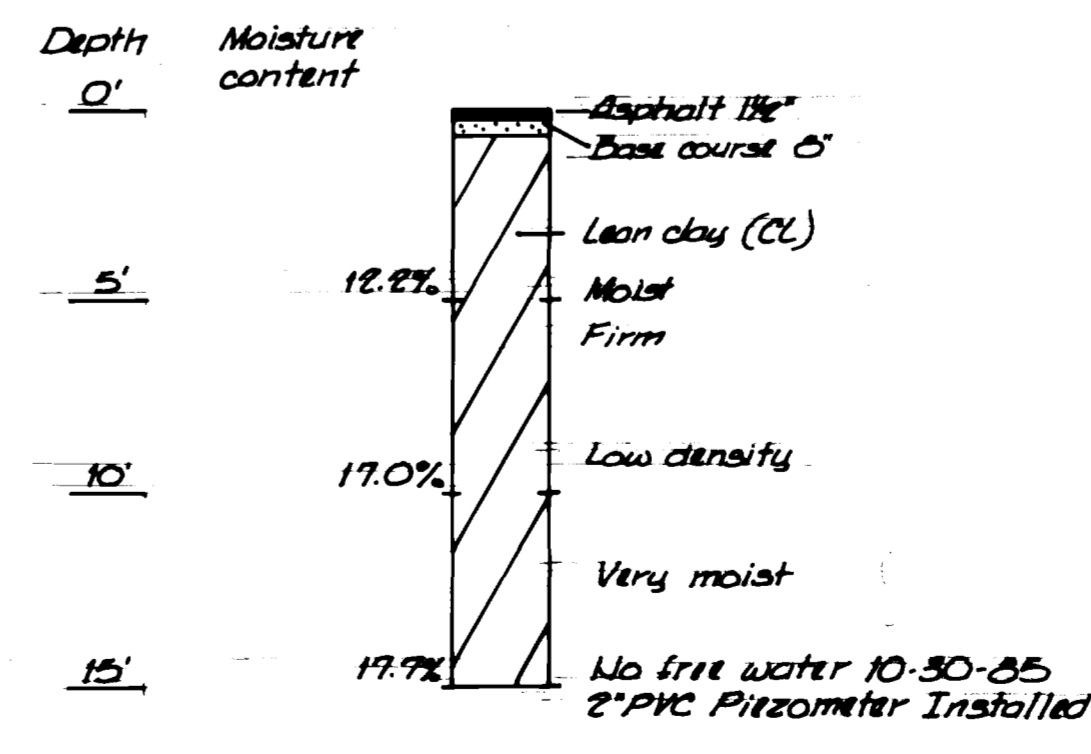
TH#7



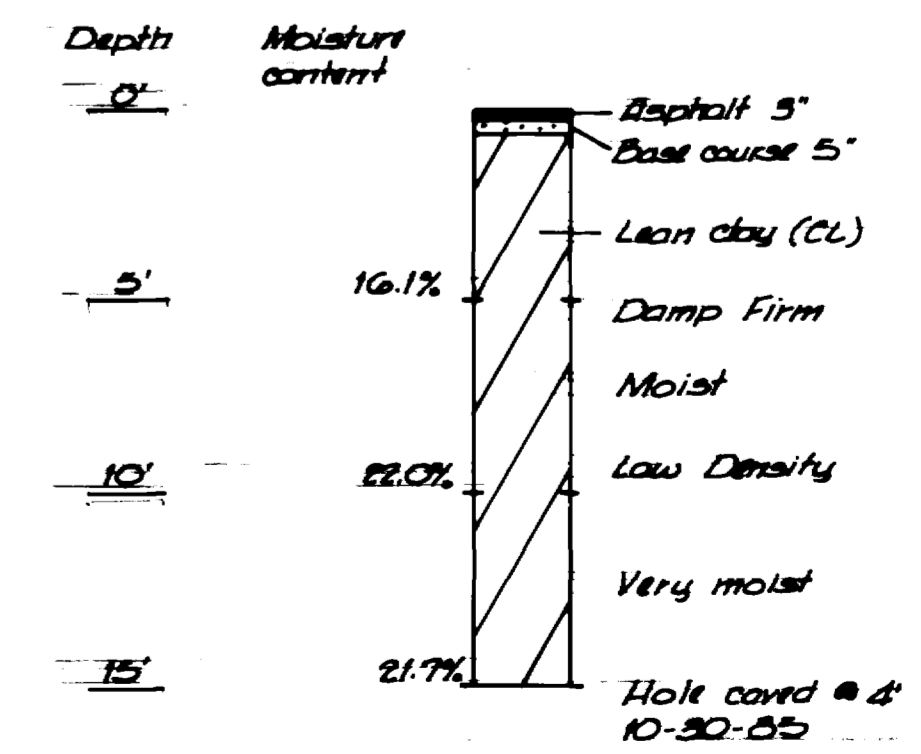
TH#4



TH#5



TH#6



TH#7

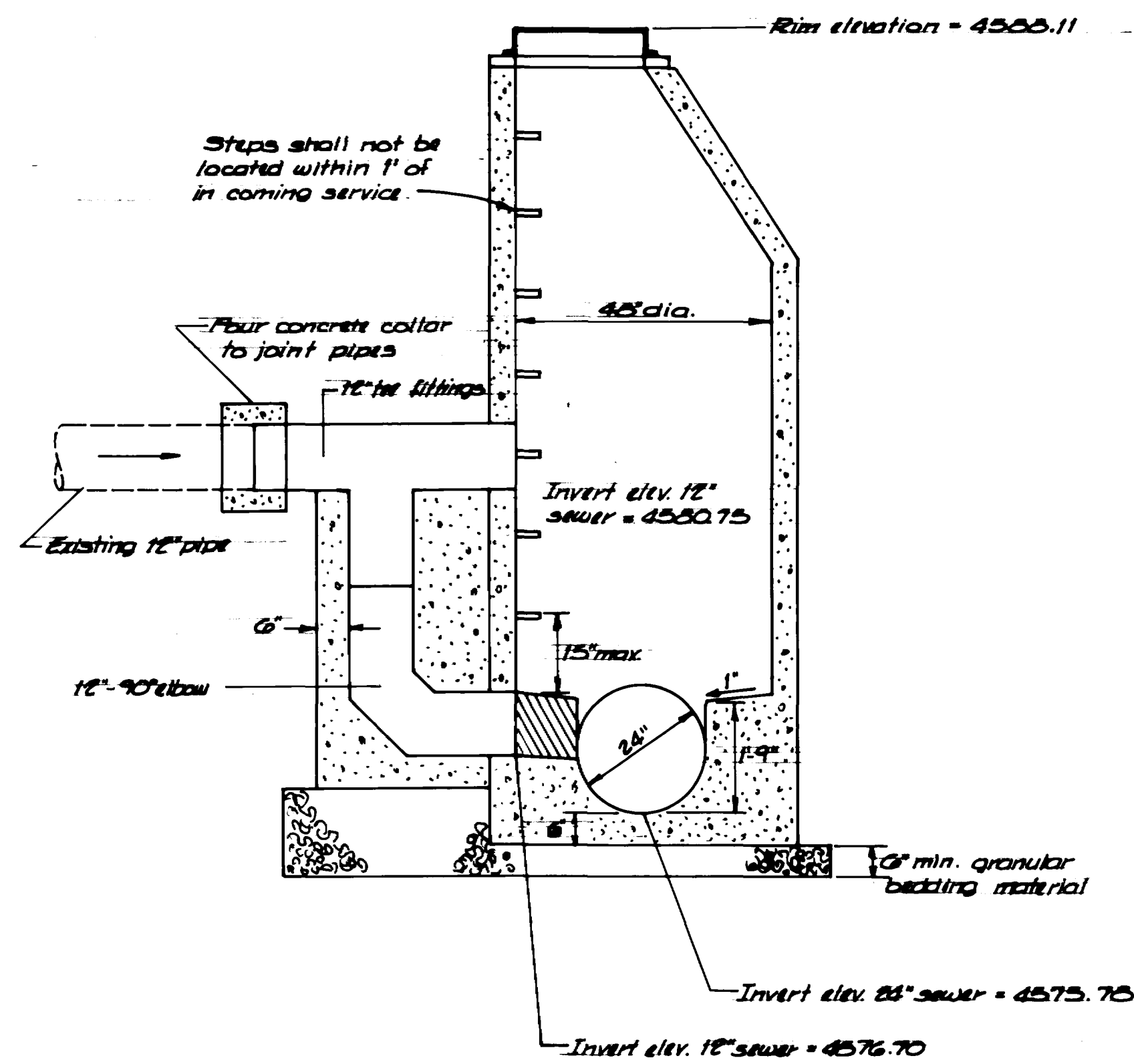
REVISION	DESCRIPTION	DATE	DRAWN BY	DATE
REVISION A			Lesley	11-85
REVISION B				
REVISION C				
REVISION D				

SCALE	PLAN	PROFILE
	HORIZ. N.T.S.	HORIZ. N.T.S.
		VERT.

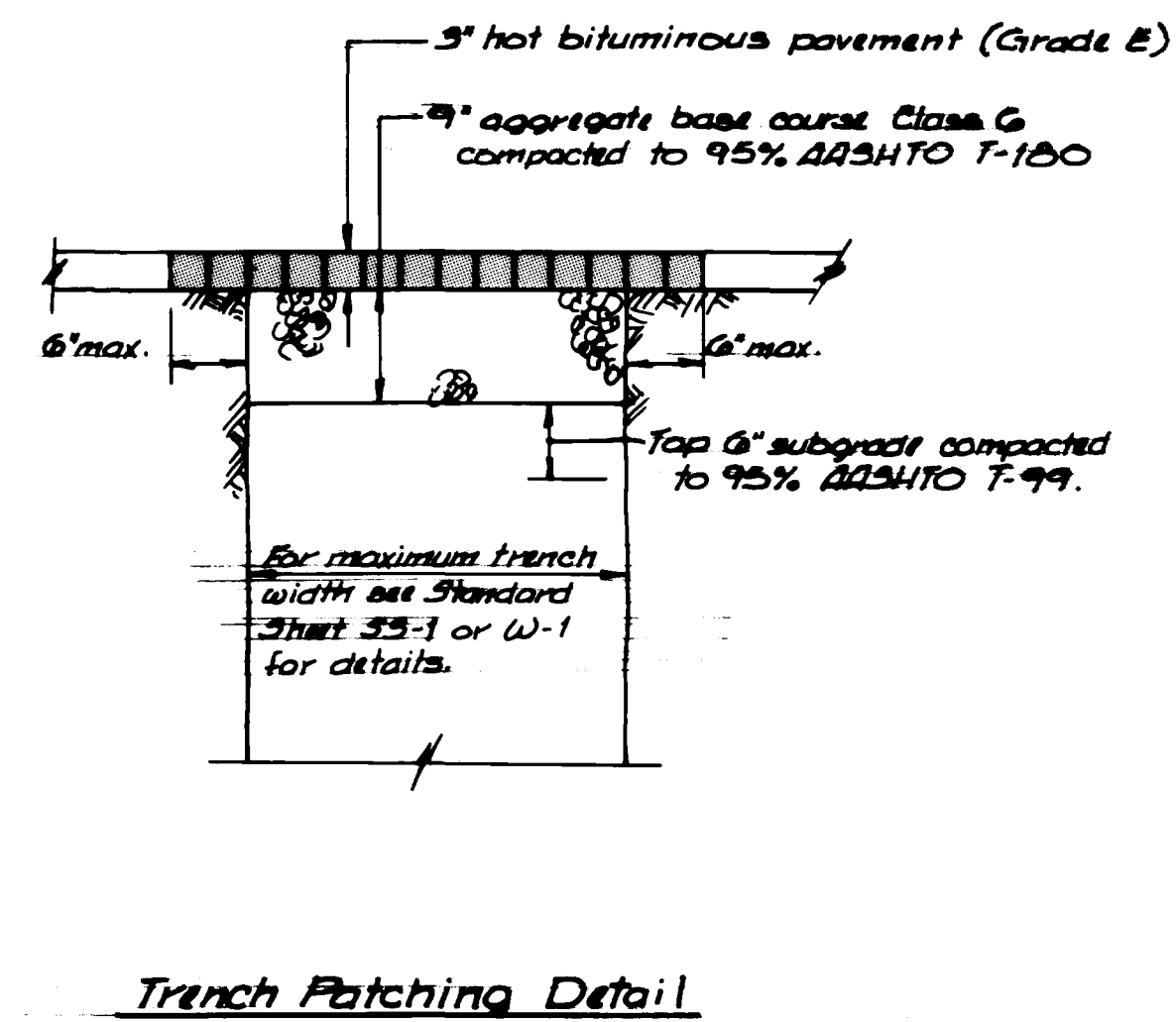
**DEPARTMENT OF PUBLIC WORKS AND UTILITIES
ENGINEERING DIVISION
CITY OF GRAND JUNCTION, COLORADO**

**Colorado Avenue Water & Sewer Project
Soil Boring Logs**

SHEET NO. 16
OF 25
FILE NO.



Drop Manhole
Station 68+95, 9' Rt.



DESCRIPTION	DATE	DRAWN BY	DATE	SCALE
REVISION Δ		Lesley	11-85	PLAN
REVISION Δ		CHECKED BY	DATE	PROFILE
REVISION Δ		APPROVED BY	DATE	HORIZ. N.T.S.
REVISION Δ		FIELD BOOK NO.	PAGE	HORIZ. VERT.

DEPARTMENT OF PUBLIC WORKS AND UTILITIES
ENGINEERING DIVISION
CITY OF GRAND JUNCTION, COLORADO

Colorado Avenue Water & Sewer Project
Details

SHEET NO. 17
OF 25
FILE NO.