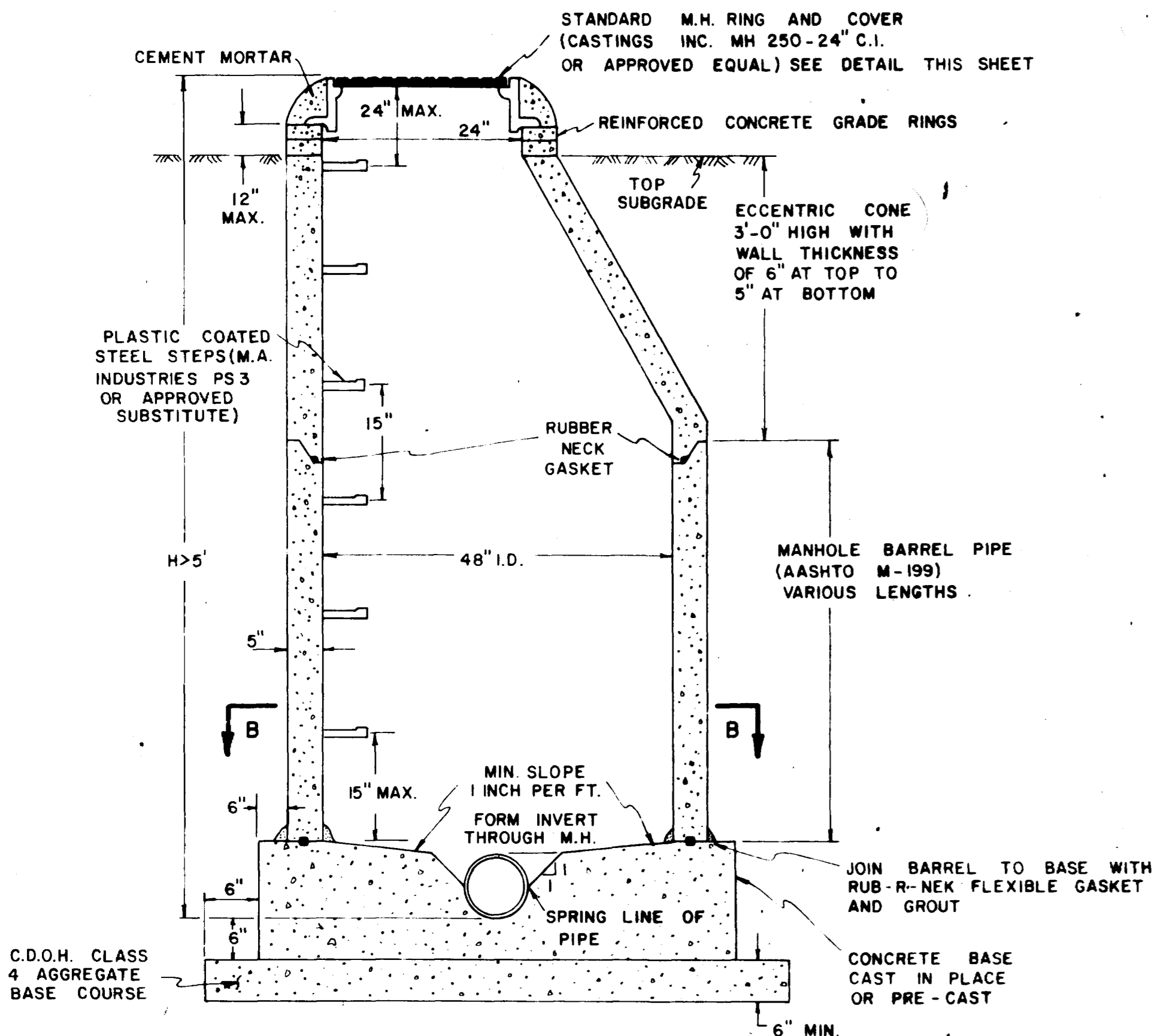
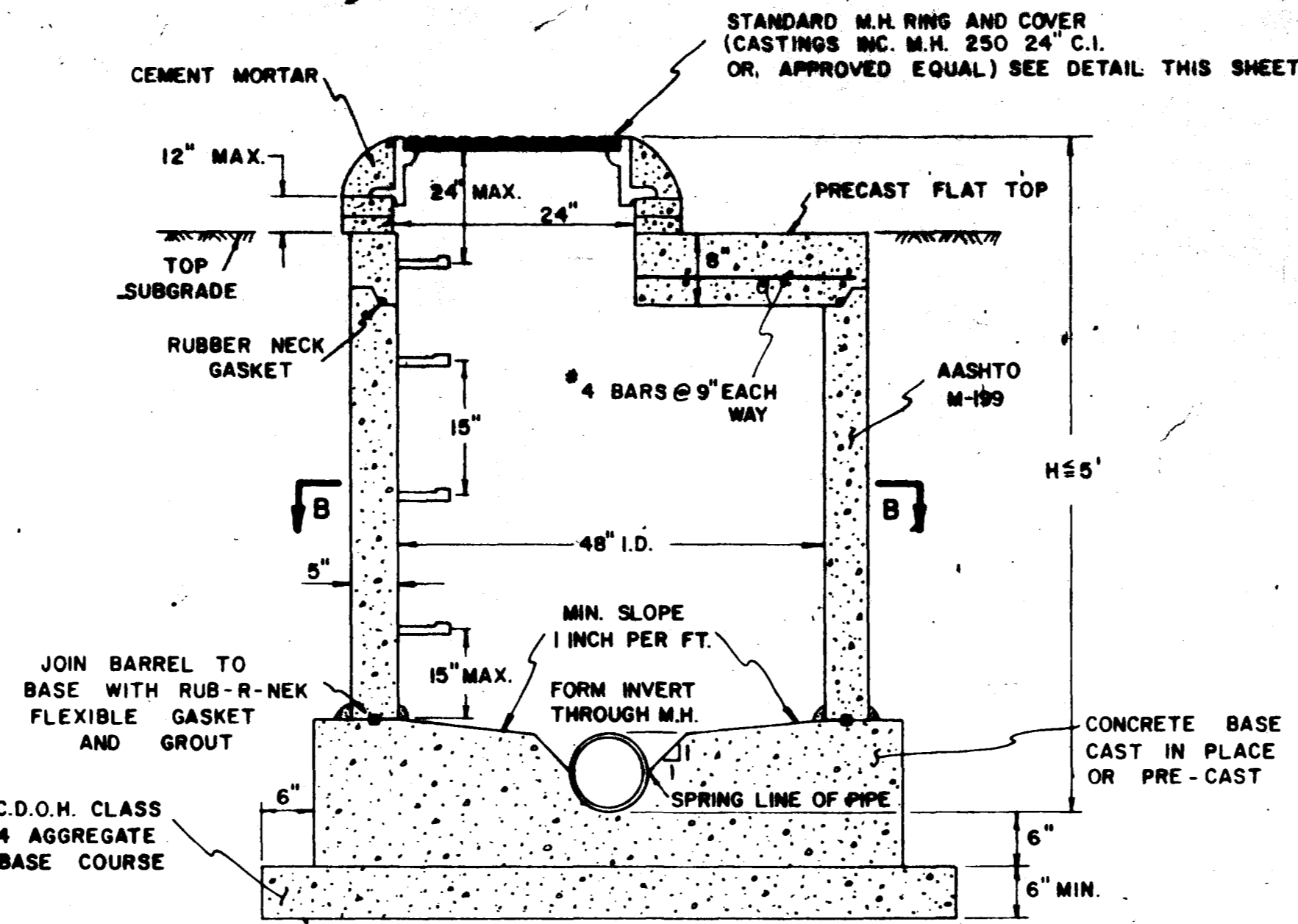


MANHOLE NOTES

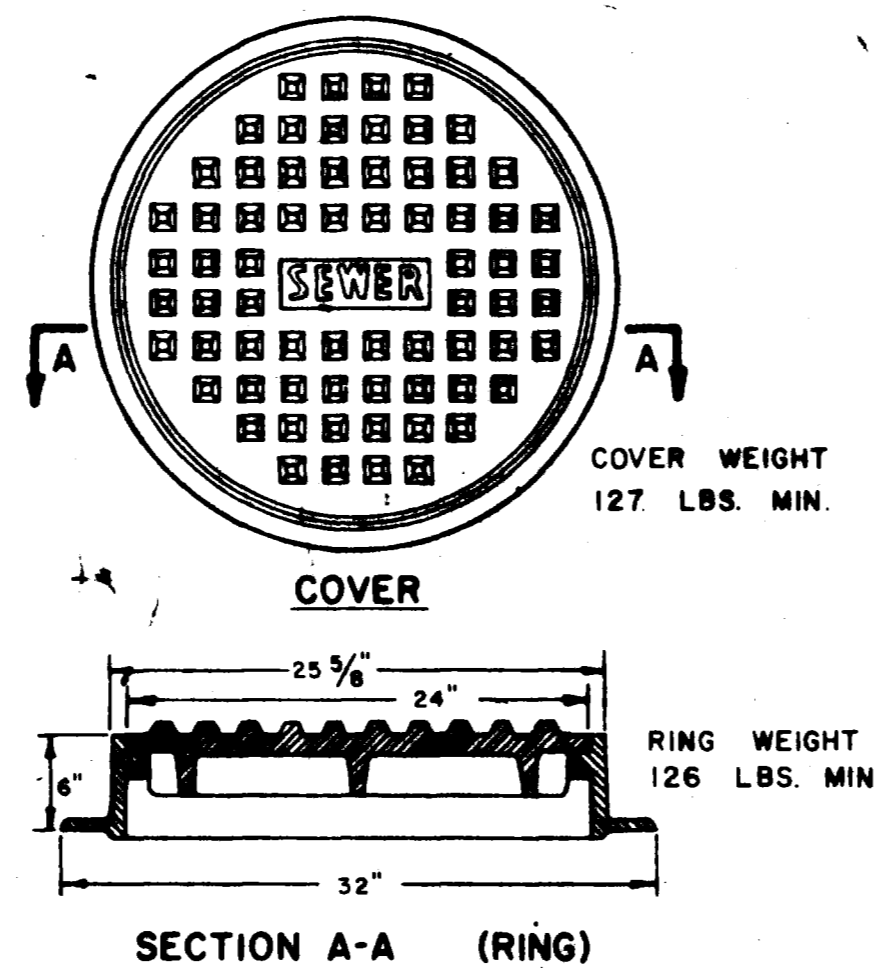
1. CONCRETE SHALL BE COLORADO DIVISION OF HIGHWAYS CLASS "B" (SECTION 601.02).
2. ALL CEMENT USED IN MORTAR, CONCRETE BASES, GRADE RINGS, RISER SECTIONS, CONES, AND FLAT TOPS, FOR SANITARY SEWER MANHOLES, SHALL BE TYPE I OR MODIFIED TYPE II PORTLAND CEMENT WITH LESS THAN 5% TRICALCIUM ALUMINATE.
3. MANHOLE RISER SECTIONS, CONES, FLAT TOPS, AND GRADE RINGS SHALL BE PRECAST REINFORCED CONCRETE CONFORMING TO ASTM C-478 OR AASHTO M-199.



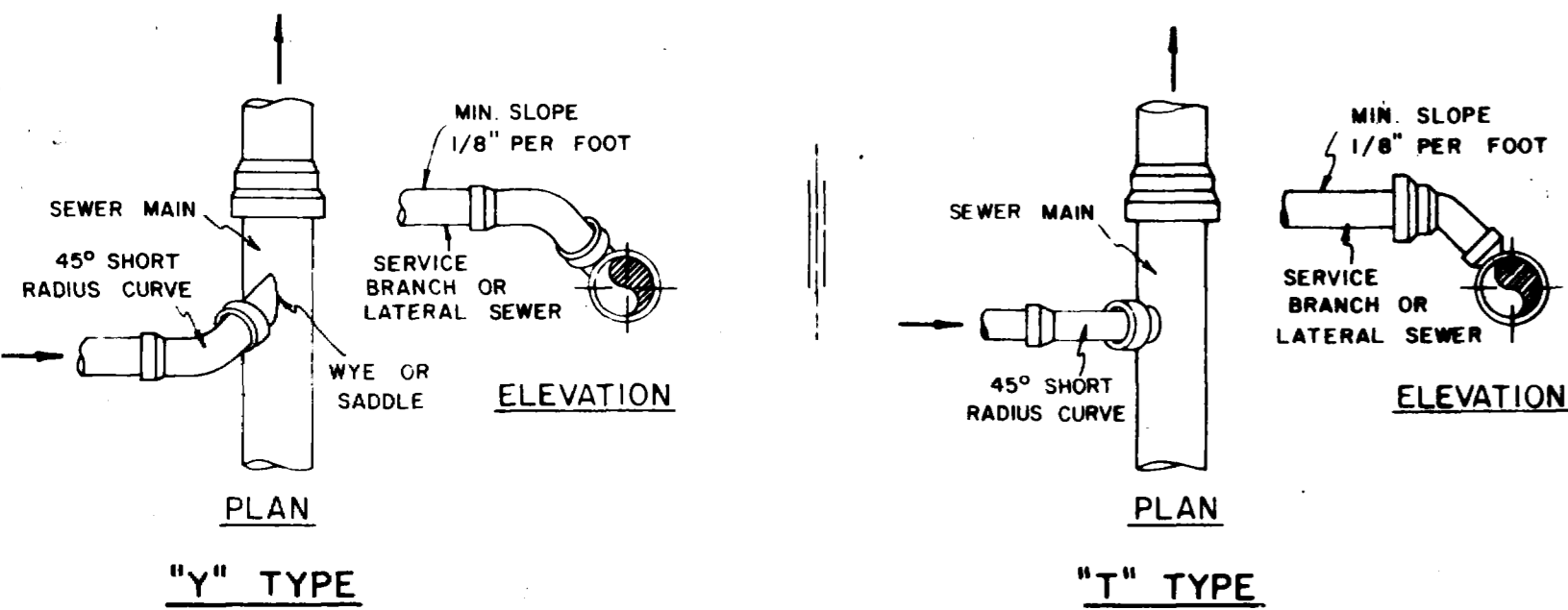
STANDARD MANHOLE



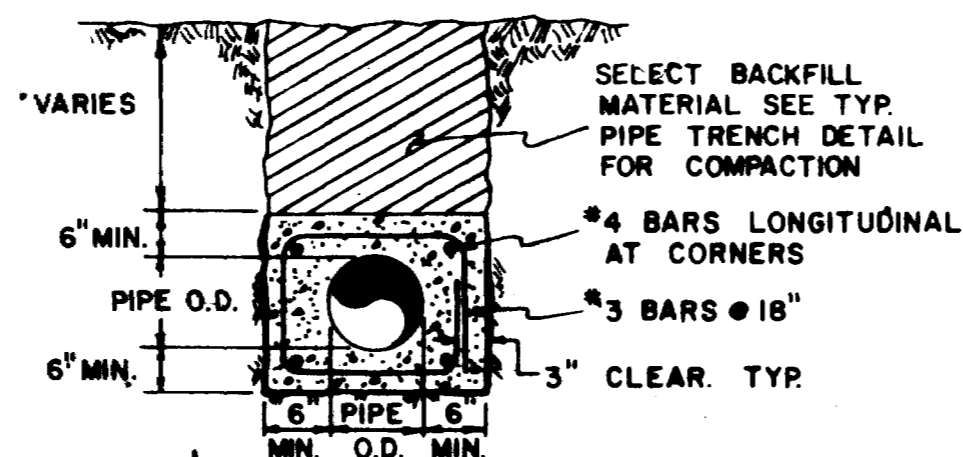
STANDARD SHALLOW MANHOLE



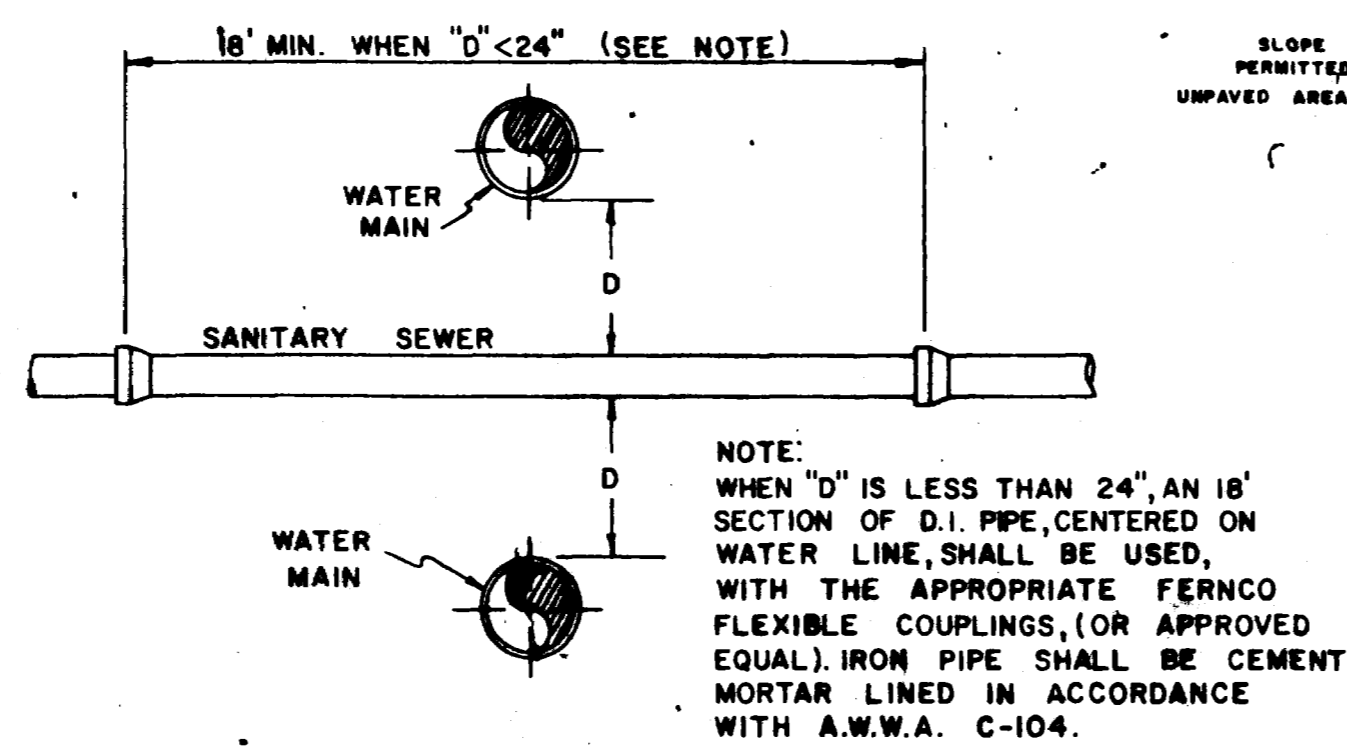
STANDARD CAST IRON MANHOLE RING & COVER



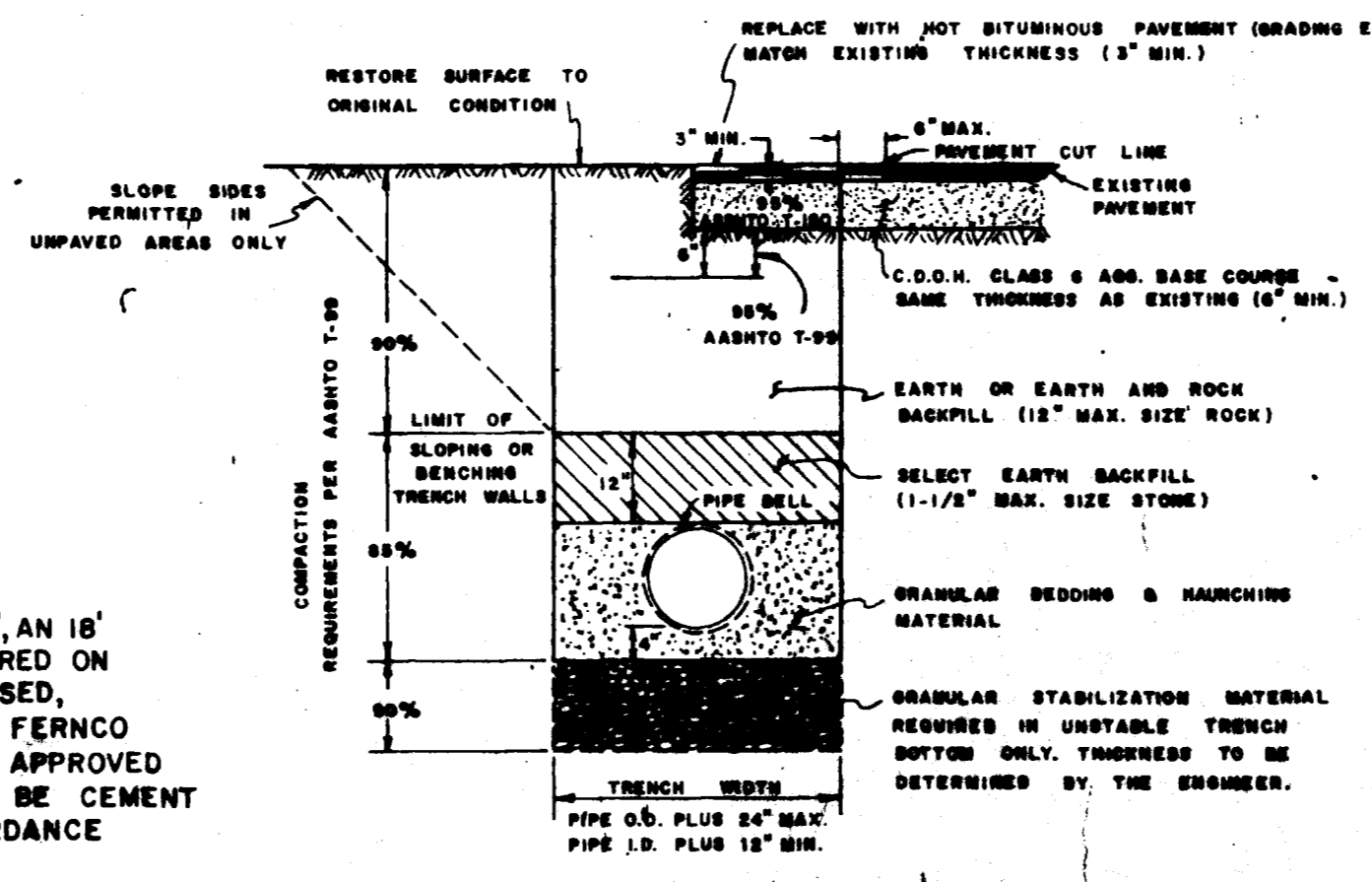
SERVICE CONNECTIONS



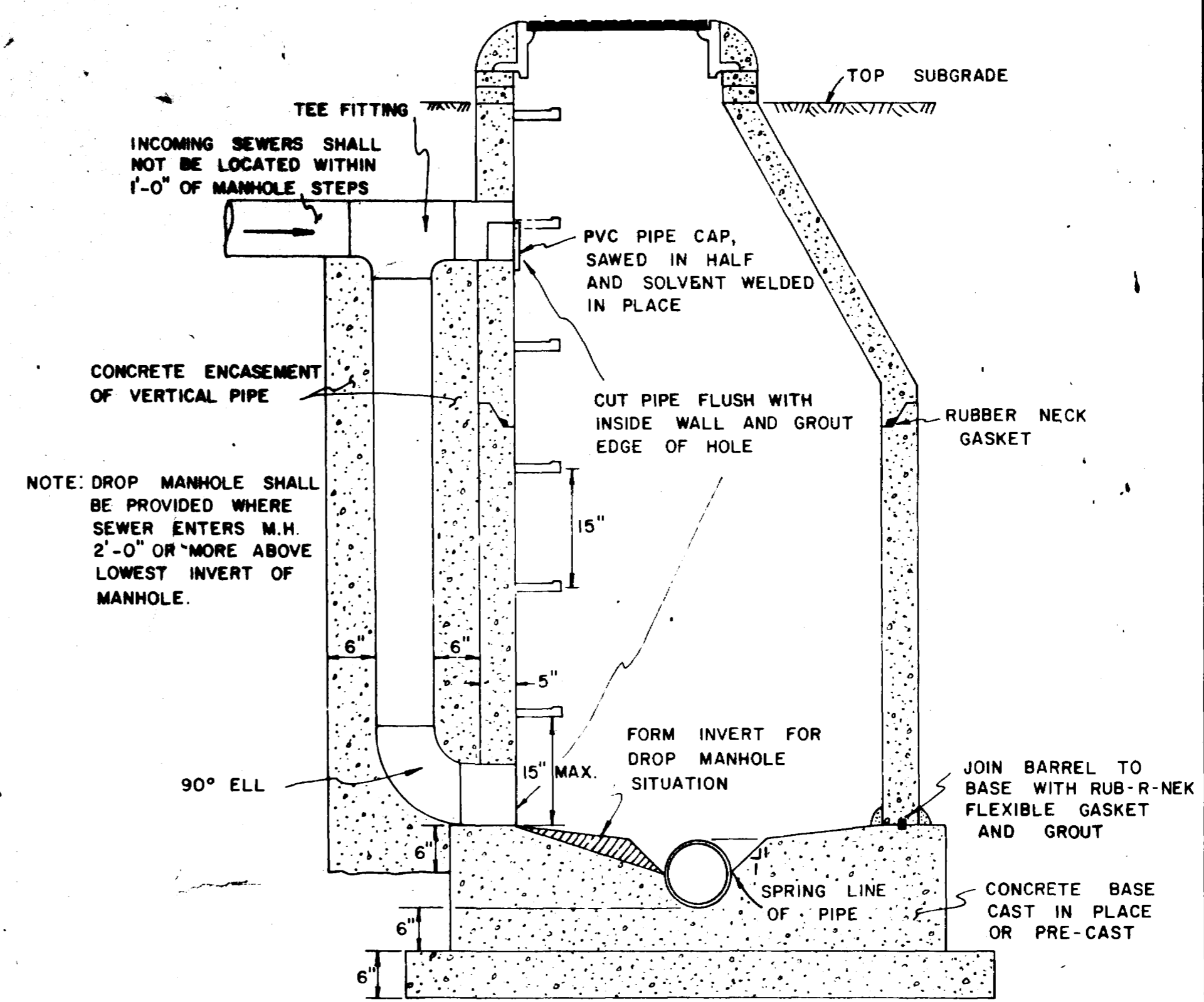
CONCRETE ENCASEMENT



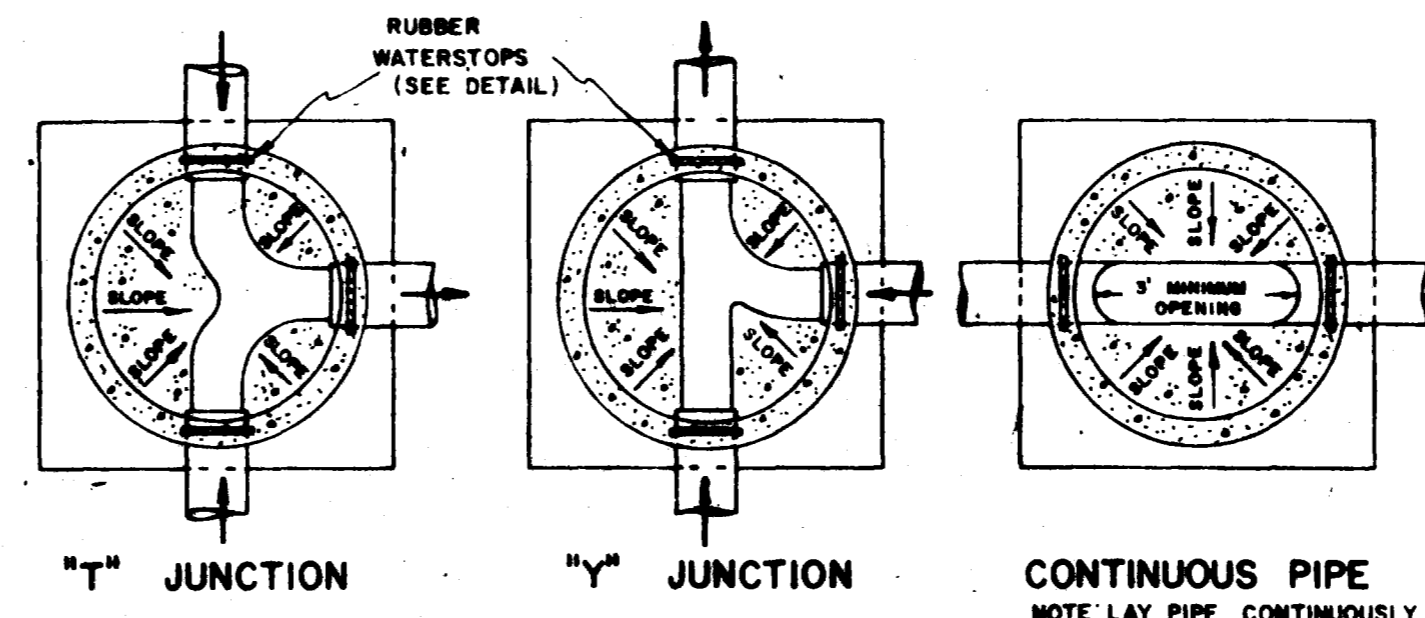
SANITARY SEWER - WATER MAIN CROSSING



TYPICAL TRENCH



DROP MANHOLE



SECTION B-B

GENERAL SEWER NOTES

1. SEWER MAINS AND APPURTENANCES SHALL BE CONSTRUCTED IN ACCORDANCE WITH THESE PLANS AND THE CURRENT SPECIFICATIONS OF THE
2. ANY "BREAK-INS" OR MODIFICATIONS TO EXISTING INSTALLATIONS SHALL BE MADE IN THE PRESENCE OF THE ENGINEER OR HIS REPRESENTATIVE.
3. MINIMUM RELATIVE COMPACTION IN PIPE ZONE SHALL BE 90%.
4. THE CONTRACTOR IS RESPONSIBLE FOR LOCATING AND PROTECTING ALL BURIED UTILITIES.
5. THE CONTRACTOR IS TO SET ALL MANHOLE RIMS A MINIMUM OF 0.5 FEET ABOVE EXISTING GRADE ON ALL MANHOLES NOT LOCATED IN EXISTING OR PROPOSED PAVED STREETS.
6. DUE TO CURRENT MESA COUNTY ROAD DEPARTMENT POLICIES, ANY ASPHALT REMOVED PARALLEL TO THE EDGE OF AN EXISTING PAVED COUNTY ROAD FOR MORE THAN 20 LINEAL FEET WILL REQUIRE ASPHALT REPLACEMENT TO THE CENTERLINE OF THE EXISTING PAVED ROAD. WHEN EXCAVATING PARALLEL TO THE EDGE OF AN EXISTING PAVED ROAD, THE CONTRACTOR SHOULD MAKE EVERY EFFORT TO MINIMIZE THE DISTURBANCE TO THE EXISTING PAVED SURFACE.

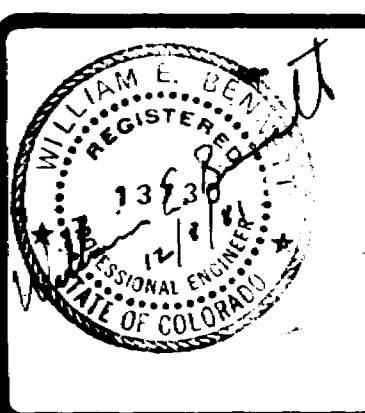
SIEVE SIZE	PERCENT BY WEIGHT PASSING SQUARE MESH SIEVES	
	GRANULAR BEDDING AND HAUNCHING MATERIAL	SUBGRADE STABILIZATION MATERIAL
4 INCH	---	100
1 INCH	100	---
No. 200	0-12	0-15

ALL BACKFILL MATERIAL SHALL BE PLACED FULL WIDTH IN 12" MAX. LIFTS AND COMPACTED TO THE MINIMUM RELATIVE DENSITIES SHOWN.

CHECKED	
DATE	
SCALE	

REVISIONS	BY

PARAGON ENGINEERING, INC.
 2784 Crossroads Blvd., Suite 104
 Grand Junction, Colorado 81501 (303) 243-8966



COUNTRY SQUIRE SUBDIVISION SANITARY SEWER DETAILS

DRAWING NUMBER

DRAWING NUMBER

DRAWING NUMBER

DRAWING NUMBER

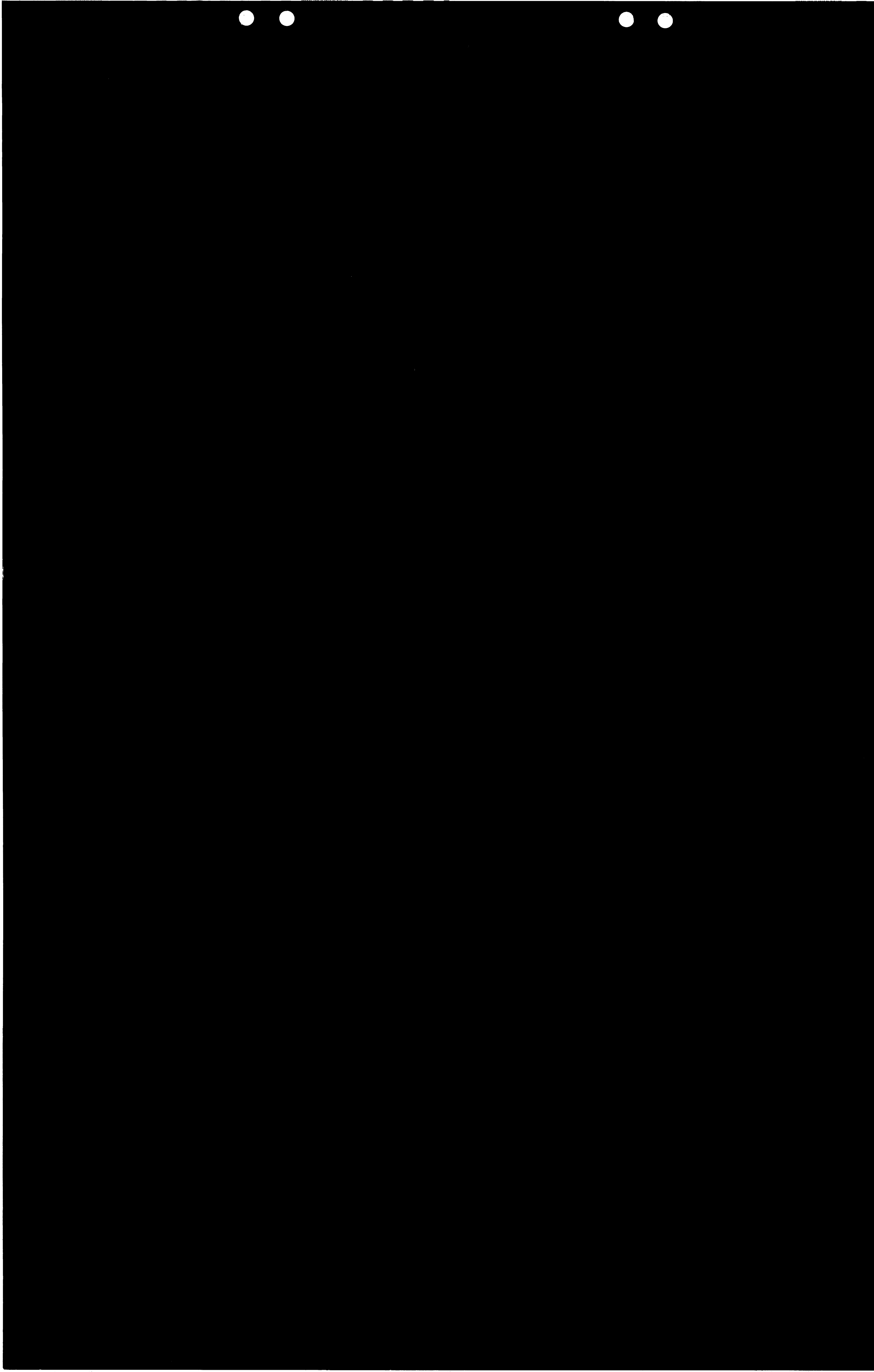
02-411-02

PLAN HOLD CORPORATION • IRVINE, CALIFORNIA
ORDER BY NUMBER 0754F

PLAN HOLD CORPORATION • IRVINE, CALIFORNIA
ORDER BY NUMBER 0754F

PLAN HOLD CORPORATION • IRVINE, CALIFORNIA
ORDER BY NUMBER 0754F

PLAN HOLD CORPORATION • IRVINE, CALIFORNIA
ORDER BY NUMBER 0754F



Note: Original will not allow scanning please see original
02041102.tif

