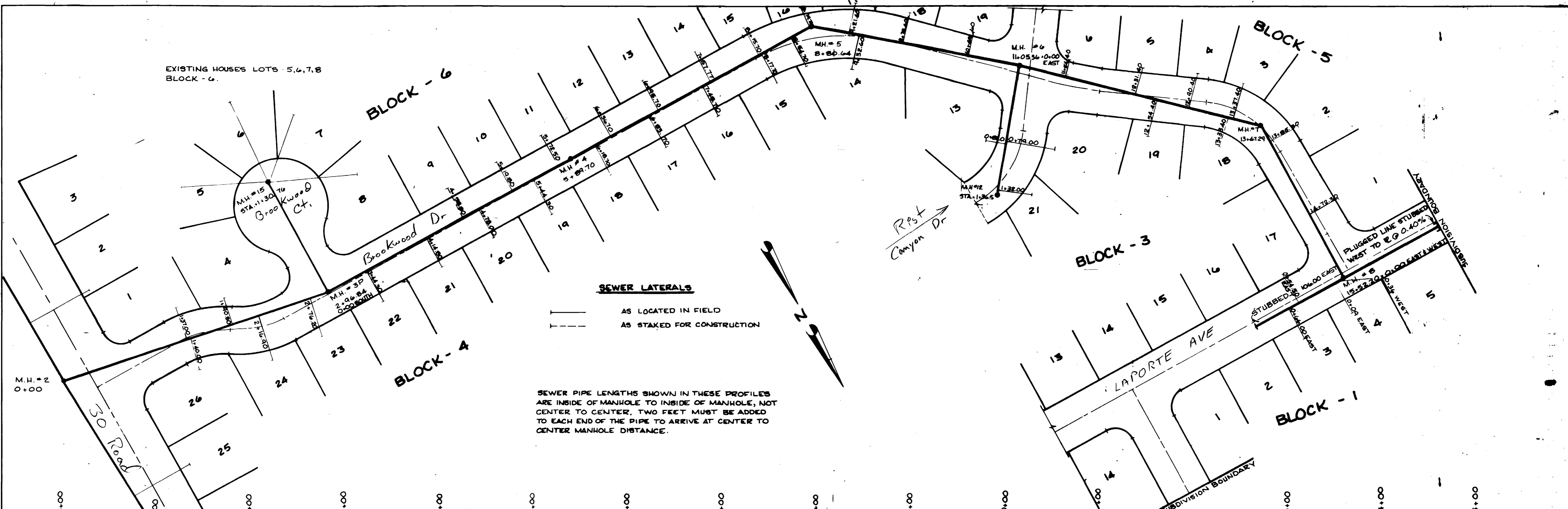
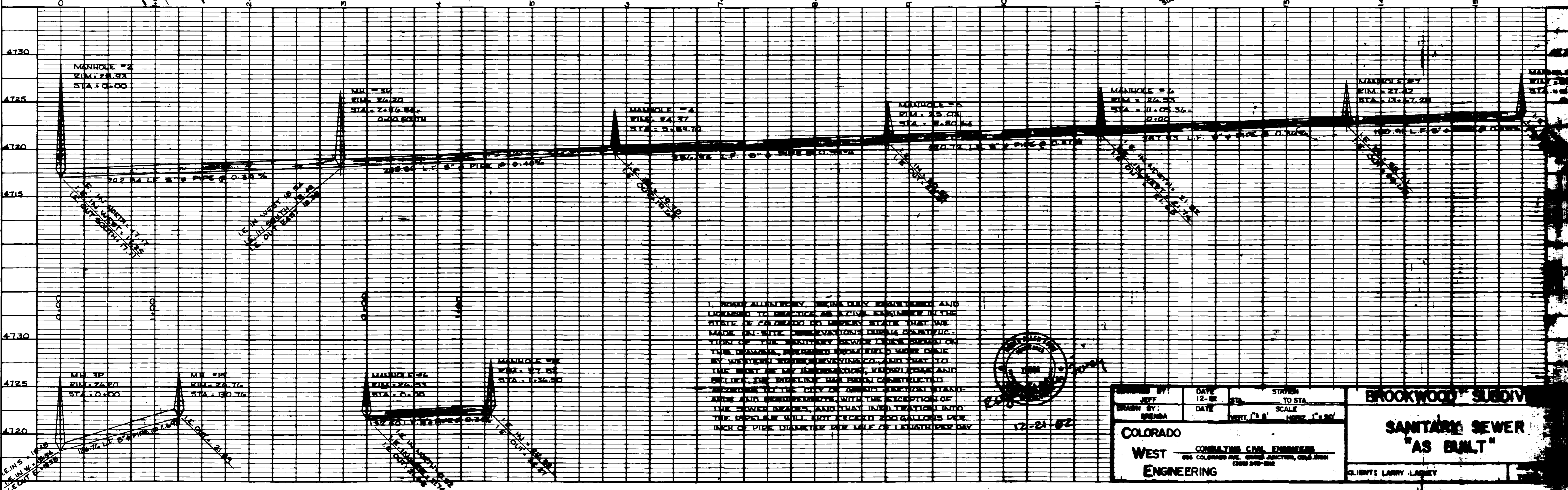


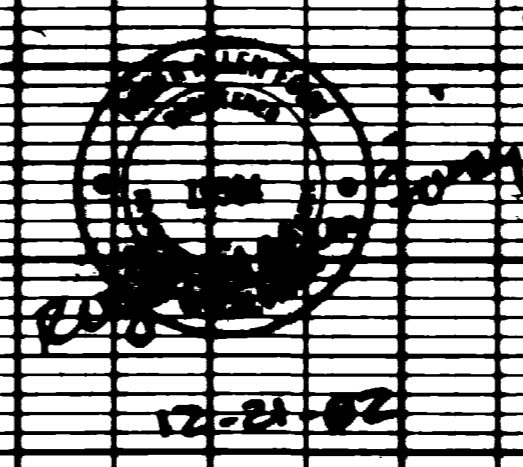
EXISTING HOUSES LOTS 5,6,7,8
BLOCK - 6



SEWER PIPE LENGTHS SHOWN IN THESE PROFILES ARE INSIDE OF MANHOLE TO INSIDE OF MANHOLE, NOT CENTER TO CENTER. TWO FEET MUST BE ADDED TO EACH END OF THE PIPE TO ARRIVE AT CENTER TO CENTER MANHOLE DISTANCE.



I, JOHN ALLENBY, REG. CIVIL ENGINEER AND LICENSED TO PRACTICE AS A CIVIL ENGINEER IN THE STATE OF COLORADO DO HEREBY STATE THAT WE MADE ON-SITE OBSERVATIONS DURING CONSTRUCTION OF THE SANITARY SEWER LINES SHOWN ON THIS DRAWING, OBSERVED FROM FIELD WORK DONE BY WEST ENGINEERING, AND THAT TO THE BEST OF MY INFORMATION, KNOWLEDGE AND BELIEF, THE DESIGN HAS BEEN CONSTRUCTED ACCORDING TO THE CITY OF GRAND JUNCTION STANDARDS AND SPECIFICATIONS WITH THE EXCEPTION OF THE MANHOLE SIZES, AND THAT INSPECTION DURING THE PROJECT WILL NOT EXCEED 200 GALLONS PER INCH OF PIPE DIAMETER PER MILE OF LENGTH PER DAY.



DESIGNED BY: JEFF	DATE: 12-02	STATION TO STA.	BROOKWOOD SUBDIV
DRAWN BY: BESBA	DATE: 12-21-02	SCALE: VERT. 1" = 10' HORIZ. 1" = 80'	
COLORADO WEST ENGINEERING CONSULTING CIVIL ENGINEERS 805 COLORADO AVE. GRAND JUNCTION, CO 81501 (970) 242-0100			SANITARY SEWER "AS BUILT" CLIENT: LARRY LANEY